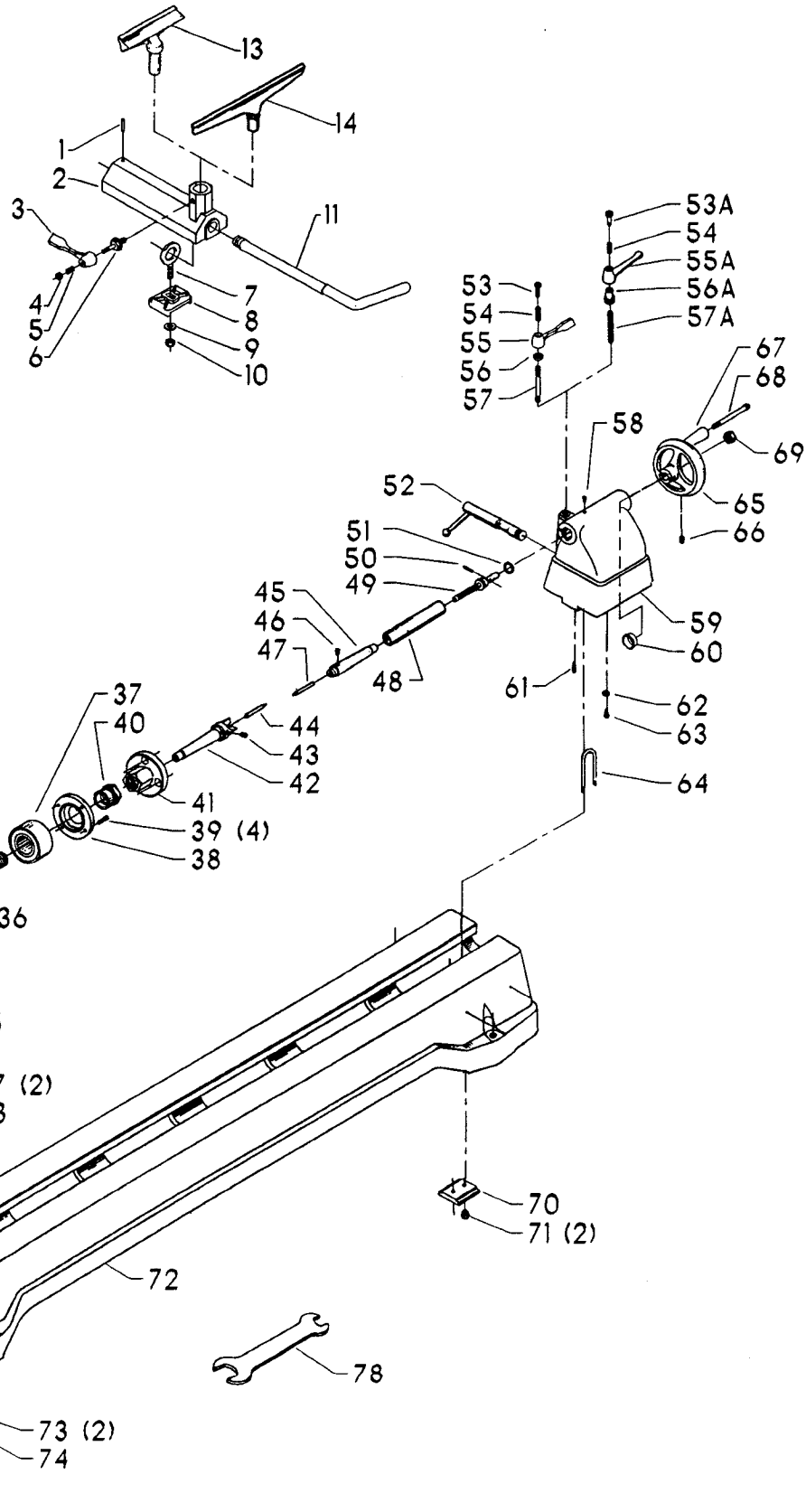


EARLY & INTERMEDIATE MODELS ONLY

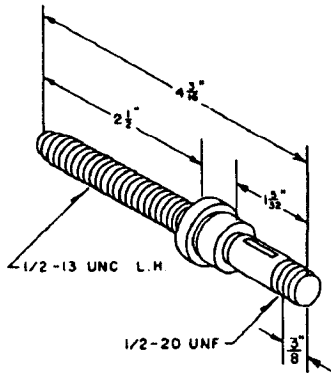


REPLACEMENT PARTS

REF NO	PART NUMBER	DESCRIPTION	REF NO	PART NUMBER	DESCRIPTION
*	46-707	TOOL REST BASE (Current Models Only), CONST OF:	56	902-01-201-2579	7/16-14 HEX NUT (Current Models Only)
1	905-01-010-2706	3/16 X 1" SPRING PIN	56A	902-04-030-1408	7/16-14 SERRATED NUT (Early Models Only)
2	434-08-005-0001	TOOL REST	57	406-03-111-0002	STUD (Current Models Only)
3	434-08-067-0003	LEVER	57A	901-04-190-0288	7/16-14 X 2" HEX SOC SET SCREW (Early Models Only)
4	902-01-212-2409	1/4-20 LOCK NUT	58	907-00-000-2486	OIL HOLE COVER
5	406-03-122-0002	SPRING	59	434-03-312-0001	TAILSTOCK, INCL:
6	422-34-111-0002	STUD	60	920-75-103-1387	BUSHING
7	901-11-333-1627	EYE BOLT	61	905-01-010-2729	3/16" X 1/2" SPRING PIN
8	434-08-072-0001	CLAMP PLATE	62	904-03-020-1764	1/4" INT TOOTH WASHER
9	904-01-010-1615	FLAT WASHER	63	901-09-060-6131	1/4-28 X 1/2" HEX HD SCREW
10	902-01-213-1635	3/6-16 LOCK NUT	64	434-01-111-0003	U STUD
11	434-08-108-0001	CAM ROD	65	930-01-043-1338	HANDWHEEL ASSY, (See Service Note A), INCL:
13	46-805	6" TOOL REST	66	901-04-140-0252	5/16-18 X 5/16" HEX SOC SET SCREW
14	46-711	12" TOOL REST	67	1085958	HANDLE
20	49-094	V-BELT - 4 SPEED MODELS ONLY	68	905-07-011-3111	PIN
21	902-01-201-5456	SPINDLE NUT - LH	69	902-01-020-1266	1/2-13 JAM NUT (Early Models Only, See Service Note A)
22	434-02-079-5002	BEARING RETAINER - OUTBOARD	70	434-03-027-5001	CLAMP PLATE
23	901-03-010-3318	#10-32 X 3/8" HEX SOC HD SCREW	71	902-01-210-1212	5/16-24 LOCK NUT
24	920-04-020-5360	BALL BEARING - OUTBOARD	72	434-04-306-0001	LATHE BED
25	928-06-010-7352	SPRING WASHER	73	901-06-450-2250	#04 X 3/16" ROUND HD SCREW
26	434-04-058-5001	HEADSTOCK	74	406-03-137-0004	NAMEPLATE
27	901-06-450-2250	#04 X 3/16" ROUND HD SCREW (Early Models Only)	75	1203099	DANGER DECAL FOUR SPEED MODELS ONLY
28	406-03-754-0001	NAMEPLATE (Early Models Only)	76	904-02-020-1704	3/8" LOCK WASHER
29	926-04-991-2314	SPINDLE PULLEY, INCL:	77	901-01-060-0658	3/8-24 X 1" HEX HD SCREW
30	901-04-190-0201	5/16-18 X 5/16" HEX SOC SET SCREW	78	434-01-101-0002	WRENCH
31	434-04-054-5001	GUARD	ITEMS LISTED BELOW FOR USE WITH EARLY & INTERMEDIATE MODELS ONLY		
32	905-01-010-6715	3/16" X 5/8" SPRING PIN	*	46-171	TOOL REST BASE, CONST OF:
33	921-01-010-0027	7/32" STEEL BALL	80	434-02-005-5002	SUPPORT BASE
34	928-01-021-3378	COIL SPRING	81	904-10-101-3151	STEEL BUSHING
35	434-02-371-5001	INDEX PIN	82	904-01-031-2903	FLAT WASHER
36	434-02-085-5002	SPINDLE	83	928-01-020-7393	COIL SPRING
37	920-07-080-5334	BALL BEARING - INBOARD	84	901-04-150-0232	1/4-20 X 3/8" HEX SOC SET SCREW
38	434-02-079-5003	BEARING RETAINER - INBOARD	85	434-02-405-0001	EYEBOLT (Intermediate Models Only)
39	901-03-010-3318	#10-32 X 3/8" HEX SOC HD SCREW	85A	901-11-320-0091	5/8-18 EYE SCREW (Early Models Only)
40	902-01-201-5462	SPINDLE NUT - RH	86	434-02-103-0001	FLANGE (Intermediate Models Only)
41	46-936	3" FACE PLATE	86A	434-02-103-5001	FLANGE (Early Models Only)
42	46-933	SPUR DRIVE CENTER, INCL:	87	422-32-088-0001	NUT (Intermediate Models Only)
43	901-04-190-0253	1/4-20 X 1/4" HEX SOC SET SCREW	87A	902-01-200-9764	5/8-18 JAM NUT (Early Models Only)
44	434-01-022-0010	PIN	88	434-02-327-5004	CLAMP ASSY
45	46-439	CUP CENTER, INCL:	89	434-02-042-5001	SHAFT (Intermediate Models Only), INCL:
46	901-04-190-9412	1/4-20 X 3/16" HEX SOC SET SCREW	90	901-07-261-3250	STUD (Intermediate Models Only)
*	434-04-392-5001	TAILSTOCK ASSY, CONST OF:	91	931-01-021-4099	KNOB - SCREW ON (Intermediate Models Only)
47	434-01-022-0010	CENTER	92	434-02-042-5001	SHAFT (Early Models Only)
48	434-02-077-5001	RAM	93	905-01-010-2708	3/16" X 1 1/4" SPRING PIN (Early Models Only)
49	434-03-112-5005	ADJUSTING SCREW (See Service Note A)	94	434-02-067-5001	CLAMP LEVER (Early Models Only)
50	905-01-010-2704	1/8" X 3/4" SPRING PIN	* NOT SHOWN ASSEMBLED		
51	904-01-031-2903	FLAT WASHER			
52	434-03-342-5001	ECCENTRIC SHAFT ASSY			
53	406-03-112-0006	SPECIAL SCREW (Current Models Only)			
53A	406-03-112-0003	SPECIAL SCREW (Early Models Only)			
54	406-03-122-0002	SPRING			
55	406-03-033-0002	RATCHET HANDLE (Current Models Only)			
55A	406-03-033-0001	HANDLE (Early Models Only)			

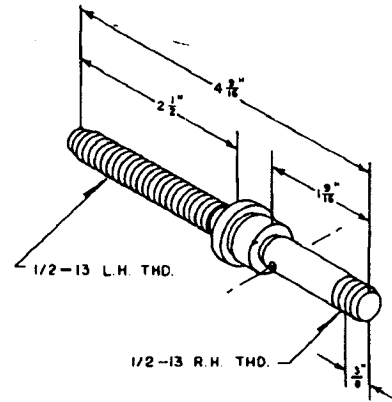
SERVICE NOTES:

A - In the past there have been several tailstock handwheels and adjusting screws used on the tailstock assemblies. The illustrations below are provided to identify which adjusting screw, handwheel and hardware are to be used.



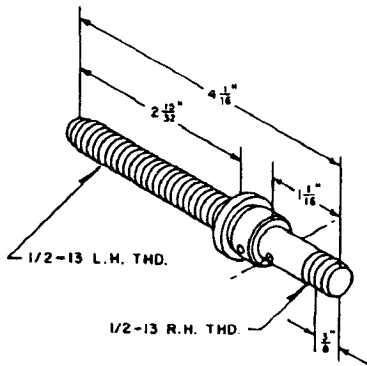
May of 1956 to May of 1963

434-03-112-5004	ADJUSTING SCREW
930-01-990-3643	HANDWHEEL
927-01-100-2617	KEY
902-01-020-1227	1/2-20 HEX JAM NUT



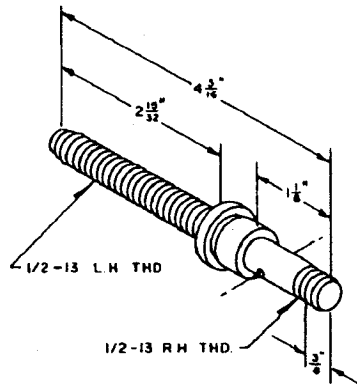
May of 1963 to Oct of 1968

434-04-112-5001	ADJUSTING SCREW
930-01-991-9035	HANDWHEEL
905-01-010-2704	1/8 X 3/4" SPRING PIN
902-01-020-1266	1/2-13 HEX JAM NUT



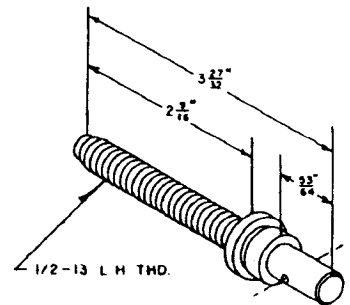
Oct of 1968 to June of 1970

1202432	ADJUSTING SCREW
930-01-043-1338	HANDWHEEL
905-01-010-2704	1/8 x 3/4" SPRING PIN
902-01-020-1266	1/2-13 HEX JAM NUT



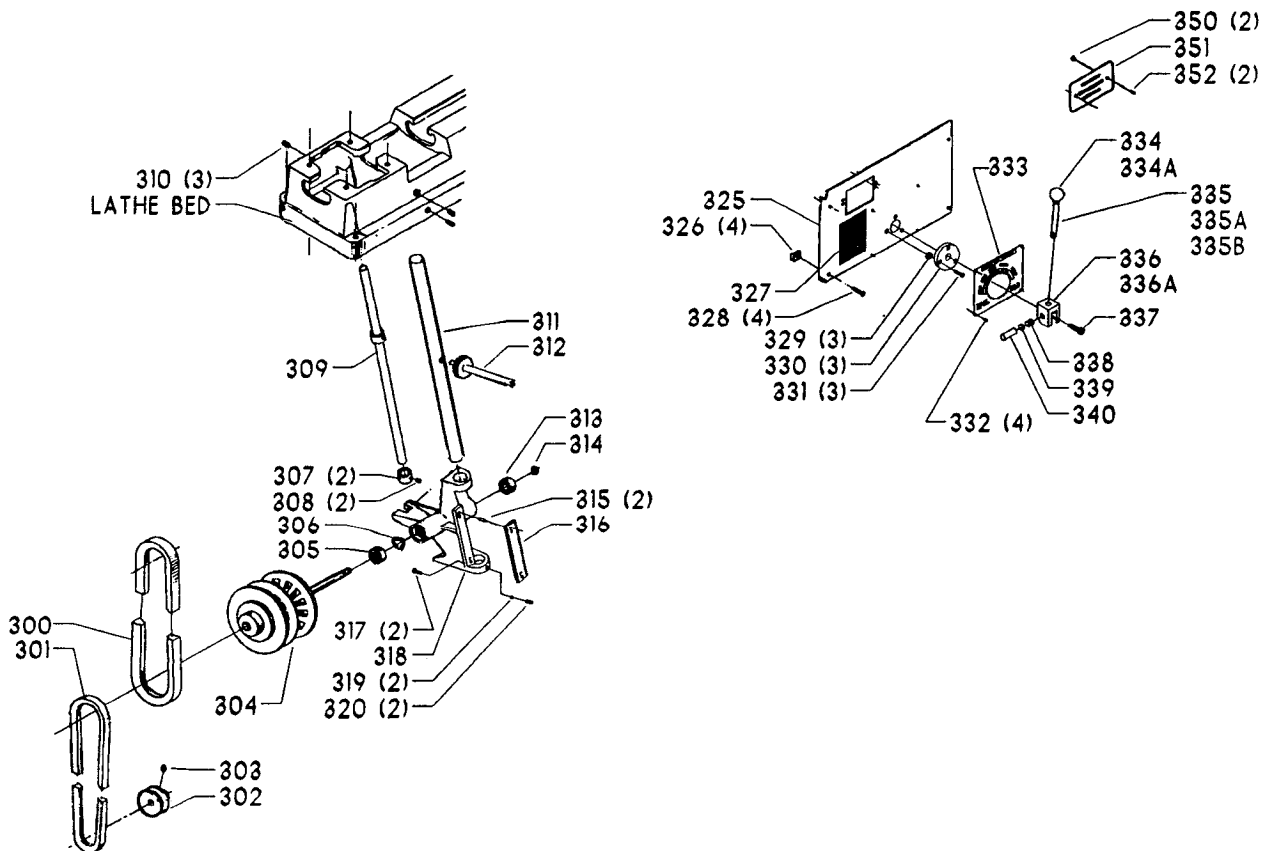
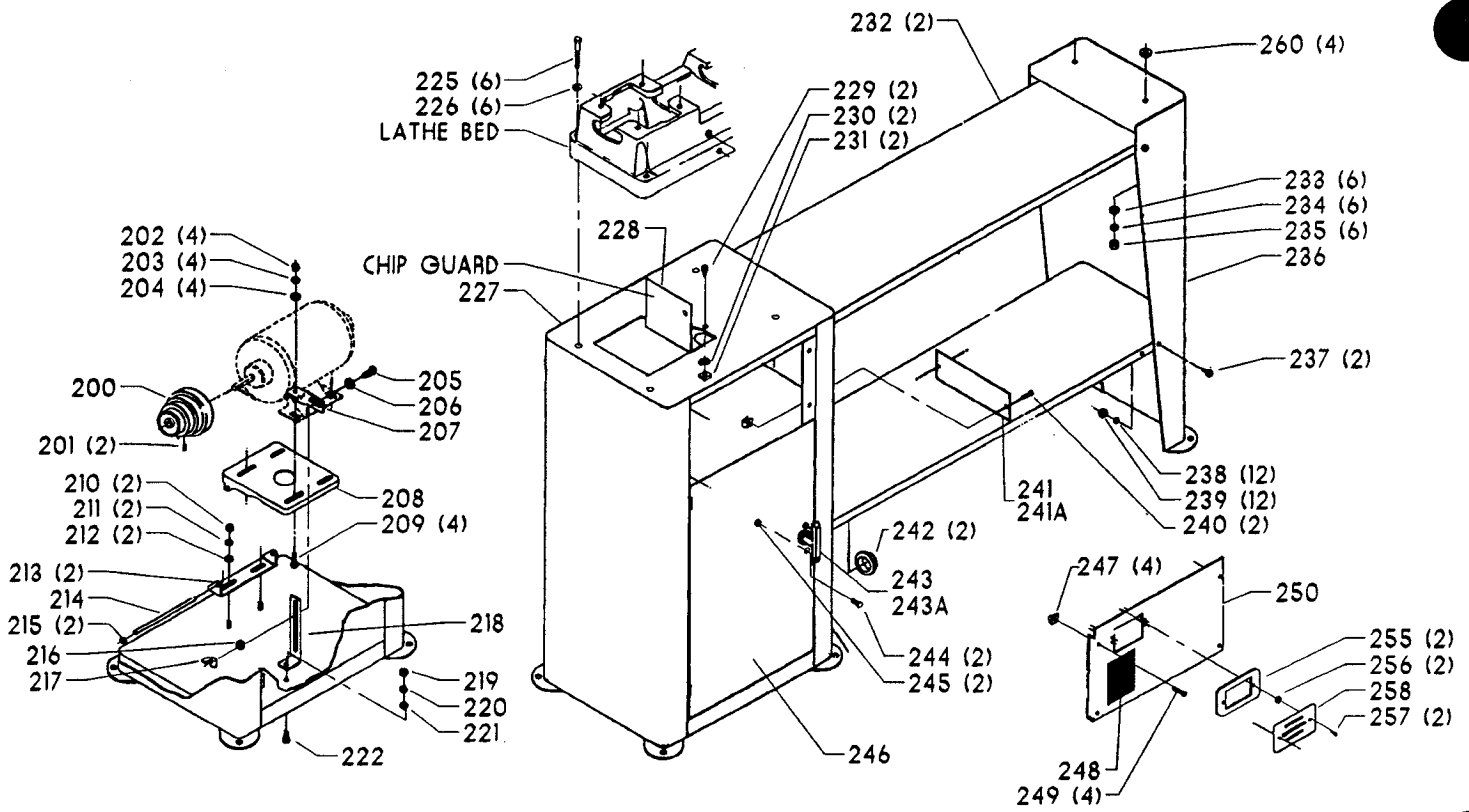
June of 1970 to Jan 1978

1202432	ADJUSTING SCREW
930-01-043-1338	HANDWHEEL
905-01-010-2711	1/8 X 5/8" SPRING PIN
902-01-020-1266	1/2-13 HEX JAM NUT



Jan of 1978 to Present

434-03-112-5005	ADJUSTING SCREW
930-01-043-1338	HANDWHEEL
905-01-010-2704	1/8 X 3/4" SPRING PIN



REPLACEMENT PARTS

REF NO	PART NUMBER	DESCRIPTION	REF NO	PART NUMBER	DESCRIPTION
200	41-732	MOTOR PULLEY - 4 SPEED (1/2" BORE), INCL:	257	901-02-010-0564	#06-32 X 3/8" ROUND HD SCREW (Not Supplied with Basic Unit)
201	901-04-190-0201	5/16-18 X 5/16" HEX SOC SET SCREW	258	402-04-031-5002	COVER (Not Supplied with Basic Unit)
200	41-733	MOTOR PULLEY - 4 SPEED (5/8" BORE), INCL:	260	904-08-021-3886	7/16" RUBBER WASHER
201	901-04-190-0201	5/16-18 X 5/16" HEX SOC SET SCREW	FOR USE WITH VARIABLE SPEED MODELS ONLY		
200	41-734	MOTOR PULLEY - 4 SPEED (3/4" BORE), INCL:	300	51-008	UPPER V-BELT - VARIABLE SPEED
*	50-150	CABINET COMPLETE - 4 SPEED, CONST OF:	301	51-008	LOWER V-BELT - VARIABLE SPEED
202	902-01-010-1300	5/16-18 HEX NUT	302	41-032	MOTOR PULLEY - VARIABLE SPEED (1/2" BORE), INCL:
203	904-02-010-1703	5/16" LOCK WASHER	303	901-04-150-0206	5/16-18 X 5/16" HEX SOC SET SCREW
204	904-01-010-1615	FLAT WASHER	302	41-033	MOTOR PULLEY - VARIABLE SPEED (5/8" BORE), INCL:
205	901-11-020-0808	5/16-18 X 1" CARRIAGE HD SCREW	303	901-04-150-0206	5/16-18 X 5/16" HEX SOC SET SCREW
206	904-01-010-1638	FLAT WASHER	302	41-034	MOTOR PULLEY - VARIABLE SPEED (3/4" BORE), INCL:
207	434-04-014-5002	BRACKET	303	901-04-150-0206	5/16-18 X 5/16" HEX SOC SET SCREW
208	402-04-072-5001	MOTOR PLATE	304	434-04-406-5002	VARIABLE SPEED PULLEY ASSY
209	901-11-020-0834	5/16-18 X 3/4" CARRIAGE HD SCREW	305	920-04-020-5335	BALL BEARING
210	902-01-010-1300	5/16-18 HEX NUT	306	928-06-011-4127	SPRING
211	904-02-010-1703	5/16" LOCK WASHER	307	434-01-404-0001	COLLAR, INCL:
212	904-10-031-5372	WASHER	308	901-04-190-0201	5/16-18 X 5/16" HEX SOC SET SCREW
213	1087211	HINGE BRACKET	309	434-04-055-5001	GUIDE
214	402-04-071-5001	PIN	310	901-04-150-1112	3/8-16 X 1/2" HEX SOC SET SCREW
215	904-15-010-7035	EXT RET RING	311	434-04-089-5001	SUPPORT
216	904-01-010-1615	FLAT WASHER	312	434-04-406-5001	SHAFT ASSY
217	902-04-010-1403	5/16-18 WING NUT	313	920-04-021-6618	BALL BEARING
218	434-04-014-5003	BRACKET	314	904-15-010-7042	EXT RET RING
219	902-01-010-1300	5/16-18 HEX NUT	315	905-01-010-2729	3/16" X 1/2" SPRING PIN
220	904-02-010-1703	5/16" LOCK WASHER	316	434-04-051-5001	GEAR PACK
221	904-01-010-1615	FLAT WASHER	317	901-01-060-0611	1/4-20 X 1/2" HEX HD SCREW
222	901-01-060-0607	5/16-18 X 3/4" HEX HD SCREW	318	434-04-014-5001	SUPPORT
225	901-01-060-0644	3/8-16 X 2 1/2" HEX HD SCREW	319	402-04-063-5001	DRAG PLUG
226	904-01-010-1615	FLAT WASHER	320	901-04-190-9415	1/4-20 X 1/4" HEX SOC SET SCREW
227	434-04-318-5003	CABINET	325	434-04-031-5005	COVER
228	434-04-054-5002	CHIP GUARD	326	902-03-010-2968	1/4-20 SPEED NUT
229	901-01-060-0611	1/4-20 X 1/2" HEX HD SCREW	327	434-00-752-0001	WARNING LABEL
230	904-02-020-1702	1/4" LOCK WASHER	328	901-02-010-0535	1/4-20 X 1 1/4" ROUND HD SCREW
231	902-02-040-1306	1/4-20 SQUARE NUT	329	902-01-120-1034	1/4-20 HEX NUT
232	434-04-115-5001	SHELF	330	434-04-089-5002	SUPPORT
233	904-01-010-1615	FLAT WASHER	331	901-03-030-8013	1/4-20 X 3/4" FLAT HD SCREW
234	904-02-020-1704	3/8" LOCK WASHER	332	901-06-450-2849	#06 X 1/4" ROUND HD SCREW
235	902-01-010-5900	3/8-16 JAM NUT	333	960-04-012-1427	SPEED PLATE
236	434-04-366-5001	LEG ASSY	334	1201642	KNOB - SLIP ON (Current Models Only)
237	901-01-060-0611	1/4-20 X 1/2" HEX HD SCREW	334A	931-01-022-0490	KNOB - SCREW ON (Early Models Only)
238	904-02-020-1702	1/4" LOCK WASHER	335	434-04-111-5001	7/16-14 STUD - THREADED ONE END
239	902-02-040-1306	1/4-20 SQUARE NUT	335A	434-03-111-0001	7/16-14 STUD - THREADED BOTH ENDS
240	0908459	#08-32 X 3/8" PAN HD SCREW	335B	414-02-111-5009	5/16-18 STUD - THREADED BOTH ENDS
241	438-01-021-0147	PLATE (Current Models Only)	336	434-04-019-5001	7/16-14 CAM BLOCK
241A	438-01-021-0130	BOX COVER (Early Models Only)	336A	434-04-019-5002	5/16-18 CAM BLOCK (Early Models Only)
242	438-01-011-0020	INSULATOR	337	901-03-010-0750	5/16-18 X 1" HEX SOC HD SCREW
243	931-05-993-1251	HANDLE ASSY (Current Models Only)	338	901-04-150-0208	1/4-20 X 1/4" HEX SOC SET SCREW
243A	931-05-991-1632	HANDLE (Early Models Only)	339	414-01-074-5001	PLUG
244	901-02-010-0553	#06-32 X 1/2" ROUND HD SCREW (Early Models Only)	340	414-02-071-5018	PIN
245	902-01-120-9232	#06-32 HEX NUT (Early Models Only)	350	902-01-120-9232	#06-32 HEX NUT (Not Supplied with Basic Unit)
246	434-04-331-5001	DOOR ASSY	351	402-04-031-5002	COVER (Not Supplied with Basic Unit)
247	902-03-010-2968	1/4-20 SPEED NUT	352	901-02-010-0564	#06-32 X 3/8" ROUND HD SCREW (Not Supplied with Basic Unit)
248	434-00-752-0001	WARNING LABEL			
249	901-02-010-0535	1/4-20 X 1 1/4" ROUND HD SCREW			
250	434-04-031-5008	COVER			
255	422-04-116-0001	GASKET			
256	902-01-120-9232	#06-32 HEX NUT (Not Supplied with Basic Unit)			

• NOT SHOWN ASSEMBLED

STANDARD SAFETY EQUIPMENT

In order to promote tool safety, Delta International Machinery Corp. strictly enforces the policy of repairing or replacing any damaged or missing standard safety equipment on machines presented to Delta Authorized Service Center for service/repairs. Any product which is presented to a Delta Authorized Service Center for repairs which contains missing or damaged standard safety equipment will have that equipment repaired or replaced and the customer will be charged for any such service/repairs. Customers can avoid such charges only if the missing safety component is supplied to the service center at the time of repair.

This parts list is provided to aid in obtaining service parts. Copies of the instruction and maintenance literature can be obtained through the Delta Technical Publications Department or through your local service outlet.