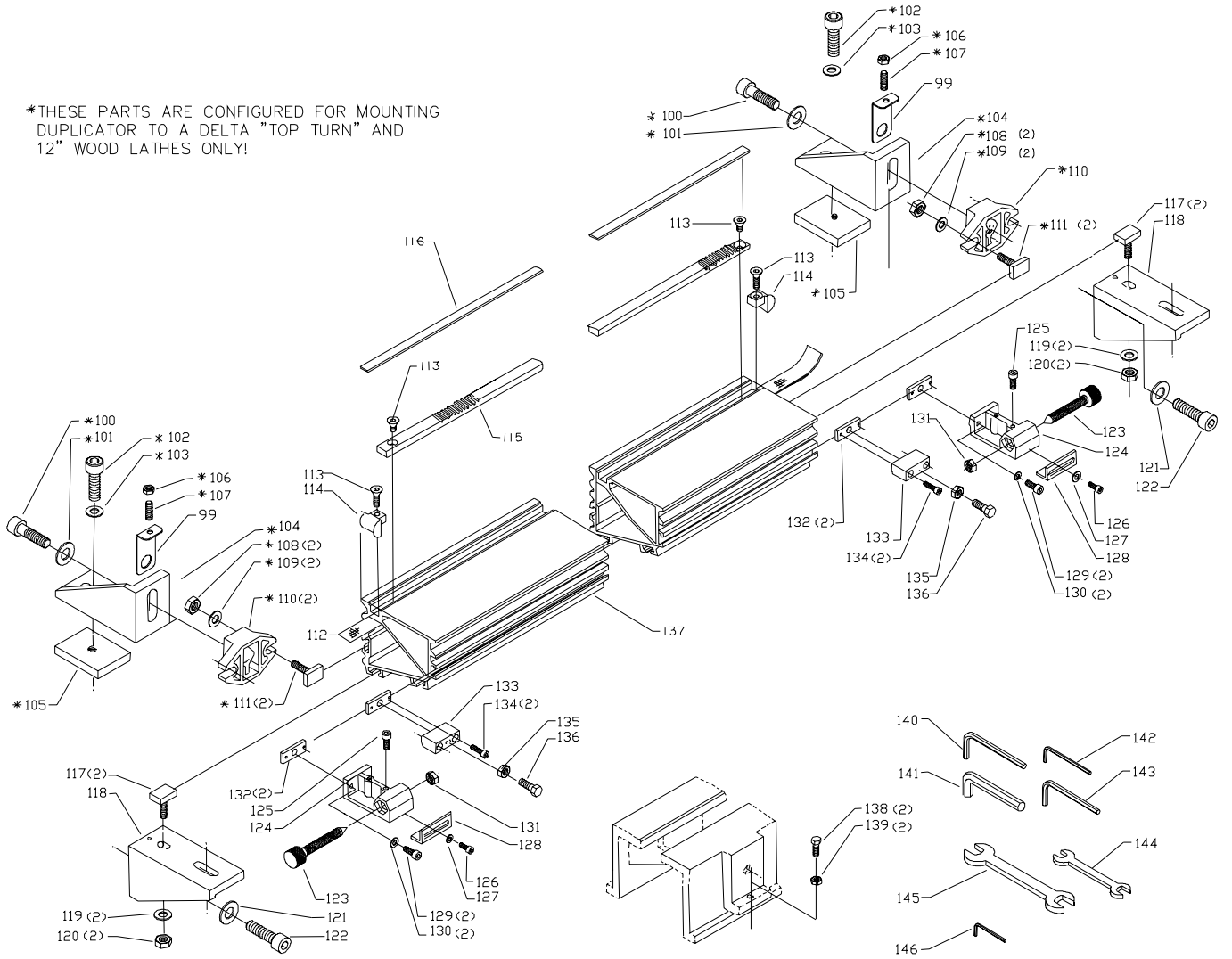


# REPLACEMENT PARTS

Ref.			Ref.		
<u>No.</u>	<u>Part No.</u>	<u>Description</u>	<u>No.</u>	<u>Part No.</u>	<u>Description</u>
1	1243561	M10 X 25MM HEX SOC HD SCREW	37	1344078	GUIDE PIN
2	1344065	LEVER	38	1243503	EXT RET RING
3	1344063	HANDGRIP	39	1344060	M6 X 20MM THUMB SCREW
4	1344064	SPACER	40	1344051	BUSHING
5	1243496	M10 HEX NUT	41	1246039	M8 X 12MM HEX SOC SET SCREW
6	1344067	LINK	42	1344077	RAM
7	1344066	SPRING	43	1344076	BALL KNOB
8	1243398	M8 HEX NUT	44	1344075	HANDLE
9	1243526	M8.4 FLAT WASHER	45	1246160	M5 X 32MM SPRING PIN
10	1344333	M8 WING NUT	46	1344074	HUB
11	1344068	STUD	47	1344050	BUSHING
12	1243526	M8.4 FLAT WASHER	48	1243431	EXT RET RING
13	1344055	STUD	49	1344073	SHAFT
14	1344061	CAM STRAP	50	1344105	DUST GUARD
15	1344062	SPECIAL SCREW	51	46-415	3/8IN DUPLICATOR TOOL
16	1344056	SPRING	52	1344051	BUSHING
17	1344057	PLUNGER	53	1246104	M6 X 25MM HEX SOC HD SCREW
18	1344060	M6 X 20MM THUMB SCREW	54	1243456	M6 HEX NUT
19	1344058	REAR GUIDE	55	1344054	WIPER
20	1246140	M6.4 FLAT WASHER	56	1344053	RETAINING PLATE
21	1246070	M6 X 30MM HEX SOC HD SCREW	57	1246102	M5.3 FLAT WASHER
22	1344059	FRONT GUIDE	58	1246051	M5 X 12MM HEX SOC HD SCREW
23	1246140	M6.4 FLAT WASHER	59	1243431	EXT RET RING
24	1246104	M6 X 25MM HEX SOC HD SCREW	61	1344050	BUSHING
25	1344079	M4.5 X 25MM PIN	62	n 1344052	CARRIAGE, INCL.: REF 40 & 47, EMO
26	1344080	BLOCK	n	904507	CARRIAGE, INCL.: REF. 40 & 47, CMO
27	1344081	ROD	63	1344103	WARNING LABEL
28	1243496	M10 HEX NUT	64	1243321	M6 X 10MM HEX SOC SET SCREW
29	1243526	M8.4 FLAT WASHER	65	1344070	GEAR
30	1344082	STUD	66	1344071	YOKE
31	1243398	M8 HEX NUT	68	1243520	M6.1 LOCK WASHER
32	1344083	BLOCK	69	1243331	M6 X 40MM HEX SOC HD SCREW
33	1344084	SCREW	70	n 904453	BRACKET
34	1344086	M3.5 X 20MM SPRING PIN			
35	1344085	KNOB			
36	1344079	M4.5 X 25MM PIN			

\*THESE PARTS ARE CONFIGURED FOR MOUNTING  
 DUPLICATOR TO A DELTA "TOP TURN" AND  
 12" WOOD LATHES ONLY!



# REPLACEMENT PARTS

Ref.	No.	Part No.	Description	Ref.	No.	Part No.	Description
	99	n 904216	BRACKET		127	1246140	M6.4 FLAT WASHER
	100	1344101	M16 X 35MM HEX SOC HD SCREW(SEE NOTE A)		128	1344095	PLATE
	101	1330316	WASHER(SEE NOTE A)		129	1246004	M6 X 16MM HEX SOC HD SCREW
	102	1344108	M12 X 45MM HEX SOC HD SCREW(SEE NOTE A)		130	1246140	M6.4 FLAT WASHER
	103	1341945	M12 FLAT WASHER(SEE NOTE A)		131	1243476	M12 HEX NUT
	104	1344098	BRACKET(SEE NOTE A)		132	1344092	RETAINING PLATE
	105	1344100	PLATE(SEE NOTE A)		133	1344096	BLOCK
	106	1243398	M8 HEX NUT(SEE NOTE A)		134	1246104	M6 X 25MM HEX SOC HD SCREW
	107	1330666	M8 X 55MM HEX SOC SET SCREW(SEE NOTE A)		135	1243398	M8 HEX NUT
	108	1243496	M10 HEX NUT(SEE NOTE A)		136	1246079	M8 X 40MM HEX HD SCREW
	109	1243502	M10 FLAT WASHER(SEE NOTE A)		137	1344091	FRAME
	110	1344099	BRACKET		138	1246175	M6 X 30MM HEX HD SCREW
		1344109	BRACKET(SEE NOTE A)			(USED ON 16"WOOD LATHE ONLY)	
	111	1344097	T BOLT		139	1243456	M6 HEX NUT
	112	1344090	BELT			(USED ON 16"WOOD LATHE ONLY)	
	113	1342035	M6 X 12MM FLAT HD SCREW		140	432-07-101-0004	5MM HEX WRENCH
	114	1344089	GUIDE		141	1330426	14MM HEX WRENCH
	115	1344087	RACK		142	422-29-101-0002	4MM HEX WRENCH
	116	1344088	RACK COVER		143	432-07-101-0005	10MM HEX WRENCH
	117	1344097	T BOLT		144	n 1343918	8 X 10MM OPEN END WRENCH
	118	1344098	BRACKET		145	1344106	13 X 14MM OPEN END WRENCH
	119	1243502	M10 FLAT WASHER		146	1344110	4MM BALL SOCKET HEX WRENCH
	120	1330709	M10 HEX NUT				
	121	1330316	WASHER				
	122	1344101	M16 X 35MM HEX SOC HD SCREW				
	123	1344094	CENTER SCREW				
	124	1344093	BRACKET				
	125	1246004	M6 X 16MM HEX SOC HD SCREW				
	126	1243379	M6 X 10MM HEX SOC HD SCREW				

**NOTE A:** THIS PART IS CONFIGURED FOR MOUNTING DUPLICATOR TO A DELTA "TOP TURN" AND 12" WOOD LATHES ONLY!

---

## STANDARD SAFETY EQUIPMENT

In order to promote tool safety, Delta Machinery strictly enforces the policy of repairing or replacing any damaged or missing standard safety equipment on machines presented to Delta Authorized Service Centers for service/repairs. Any product that is presented to a Delta Authorized Service Centers for repairs which contains missing or damaged standard safety equipment will have that equipment repaired or replaced and the customer will be charged for any such service/repairs. Customers can avoid such charges only if the missing safety component is supplied to the service center at the time of repair.

*This parts list is provided to aid in obtaining service parts. Copies of the instruction and maintenance literature can be obtained through the Delta Technical Publications Department or through your service outlet.*