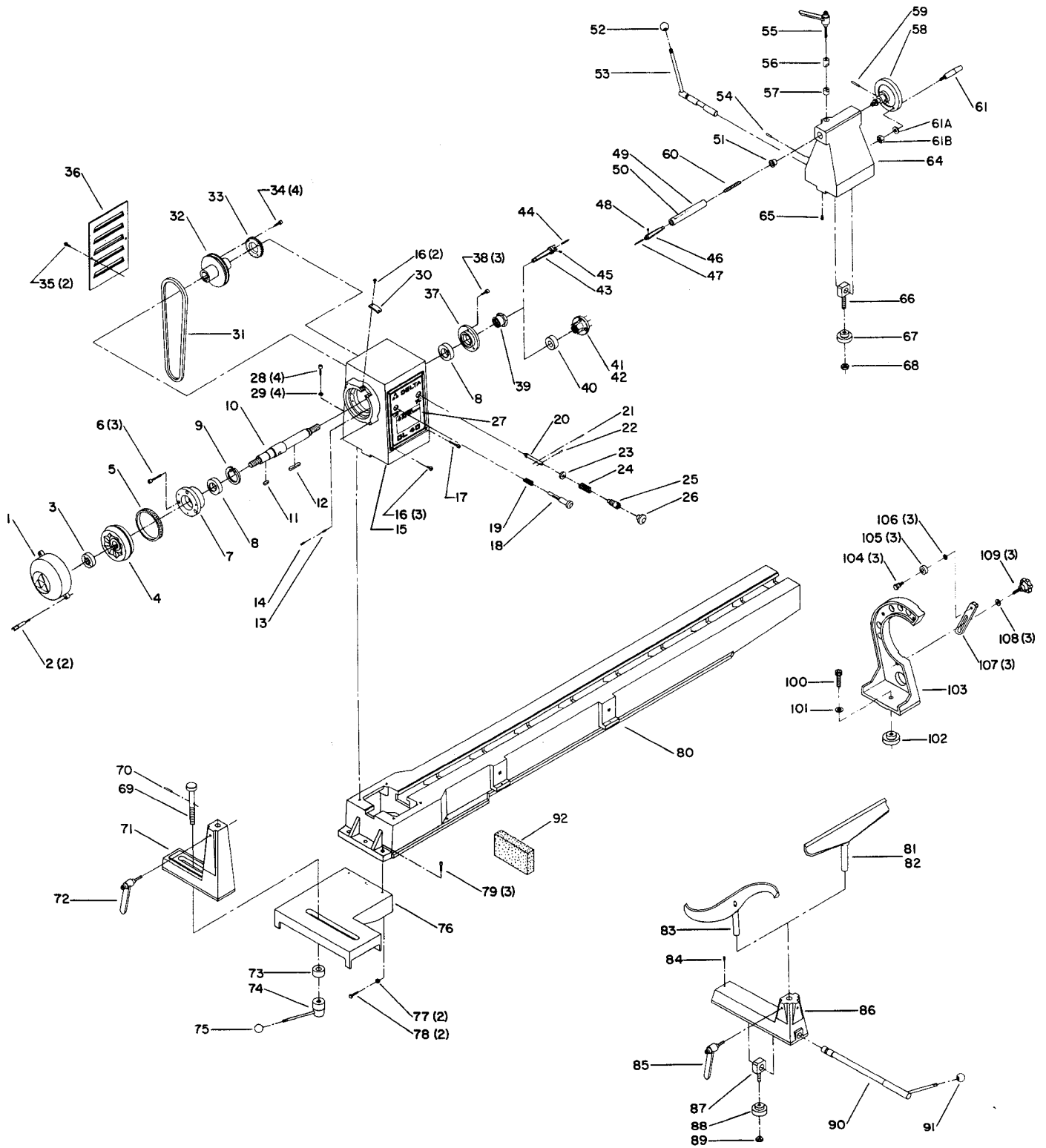


## 16" ELECTRONIC WOOD LATHE VARIABLE SPEED LATHE (3:1 REDUCTION)

PART NO 434-07-651-0007

Dated 07-30-90



REPLACEMENT PARTS

REF. NO.	PART NUMBER	DESCRIPTION	REF. NO.	PART NUMBER	DESCRIPTION
1	1330212	Cover	48	901-04-190-9412	1/4-28 X 3/8" Special Screw
2	1330230	Locking Screw	49	1330234	Ram, Incl:
3	1330224	Retaining Nut	50	1330376	Scale
4	1330702	Index Wheel Assembly (For 24 Point Indexing,) Incl:	51	1330248	Bushing
5	1330701	Index Collar (For 24 Point Indexing) (DIN 912) M6 X 25mm Soc Hd Screw	52	432-07-138-0006	Ball Handle (See Service Note A)
6	1243502	Flange	53	1330240	Eccentric Shaft Assembly (See Service Note A)
7	1330210	Bearing	54	1246101	(DIN 1481) Dia 5mm X 28mm Roll Pin
8	1330362	(DIN 472) 72i Int Retaining Ring	55	432-01-138-0001	Handle
9	1330264	Spindle	56	1330236	Spindle Locking Plug
10	1330219	Key	57	1330237	Spindle Locking Plug
11	428-08-079-0001	Key	58	1330379	Handwheel Assembly, Incl:
12	422-28-079-0013	Key	59	1246160	(DIN 1481) Dia 5mm X 32mm Roll Pin
13	1246132	(DIN 915) M8 X 16mm Hex Soc Set Screw	60	1330239	Ram Adjusting Screw
14	1246039	(DIN 913) M8 X 12mm Hex Soc Set Screw	61	1330424	Handle Assembly, Incl:
15	1330203	Headstock	61A	904-01-010-1603	1/4" Flat Washer
16	1246088	(DIN 84) M5 X 6mm Cheese Hd Screw	61B	902-01-120-1209	1/4-28 Hex Nut
17	1330259	(DIN 84) M5 X 30mm Cheese Hd Screw	64	1330205	Tailstock, Incl:
18	1330229	Pin	65	1246132	(DIN 915) M8 X 16mm Hex Soc Set Screw
19	1330250	Spring	66	1330235	Eyebolt
*	1330699	Index Assembly (For 24 Point Indexing), Const of:	67	1330244	Lock Nut
20	1330700	Index Pin (For 24 Point Indexing)	68	1243476	(DIN 934) M12 Hex Nut
21	1330261	Pin	69	1330241	Carriage Bolt, Incl:
22	1330260	Pin	70	1246160	(DIN 1481) Dia 5mm X 32mm Roll Pin
23	422-29-079-0015	Washer	71	1330209	Tool Rest Base
24	1330249	Spring	72	432-07-138-0008	Handle
25	1330228	Index Pin Support	73	1330242	Spacer
26	1330226	Knob	74	1330243	Lock Handle
27	1330238	Nameplate	75	1330257	Ball Handle
28	1246052	(DIN 912) M10 X 35mm Soc Hd Screw	76	1330204	Support
29	1243360	(DIN 7980) 10mm Lockwasher	77	1243398	(DIN 934) M8 Hex Nut
30	1330232	Sight	78	1246017	(DIN 933) M8 X 25mm Hex Hd Screw
31	1330767	V-Belt (47.50" O.C.)	79	1243554	(DIN 912) M8 X 35mm Soc Hd Screw
32	1330206	Pulley	80	1330202	Lathe Bed
33	1330698	Index Gear (For 24 Point Indexing)	81	46-805	6" Tool Rest
34	1243336	(DIN 912) M6 X 20mm Soc Hd Screw	82	46-692	12" Tool Rest
35	1246130	(DIN 84) M6 X 16mm Cheese Hd Screw	83	46-404	Inside Curl Tool Rest
36	1330222	Cover	*	46-403	Tool Rest Base Assembly, Const of:
37	1330211	Retainer	84	1246132	(DIN 915) M8 X 16mm Soc Hd Screw
38	1243336	(DIN 912) M6 X 20mm Soc Hd Screw	85	432-07-138-0008	Handle
39	1330223	Spindle Nut	86	1330208	Tool Rest Base
40	1330233	Spacer	87	1330245	Eyebolt
41	46-936	3" Face Plate	88	1330244	Lock Nut
42	46-937	6" Face Plate	89	1243476	(DIN 934) M12 Hex Nut
43	46-933	Drive Center, Incl:	90	1330246	Eccentric Shaft Assembly (See Service Note A)
44	434-01-022-0010	Center	91	432-07-138-0006	Ball Handle (See Service Note A)
45	901-04-190-0253	1/4-28 X 1/4" Special Screw	92	1330431	Dust Deflector
46	46-439	Cup Center, Incl:	**	1330247	Motor Pulley (5/8" Bore)
47	434-01-022-0010	Center	**	428-06-101-0001	10 X 13mm Wrench
			**	432-07-101-0004	5mm Hex Wrench

AVAILABLE AS AN ACCESSORY

*	46-409	Steady Rest, Const of:
100	1330331	(DIN 912) M16 X 45mm Soc Hd Screw
101	1330316	Washer
102	1330299	Nut
103	1330301	Steady Rest Body
104	1330330	Bearing Shaft
105	920-04-013-1276	Bearing
106	1246196	(DIN 471) 15E Ext Retaining Ring
107	1330302	Sliding Arm
108	1330315	Washer
109	1330309	Knob

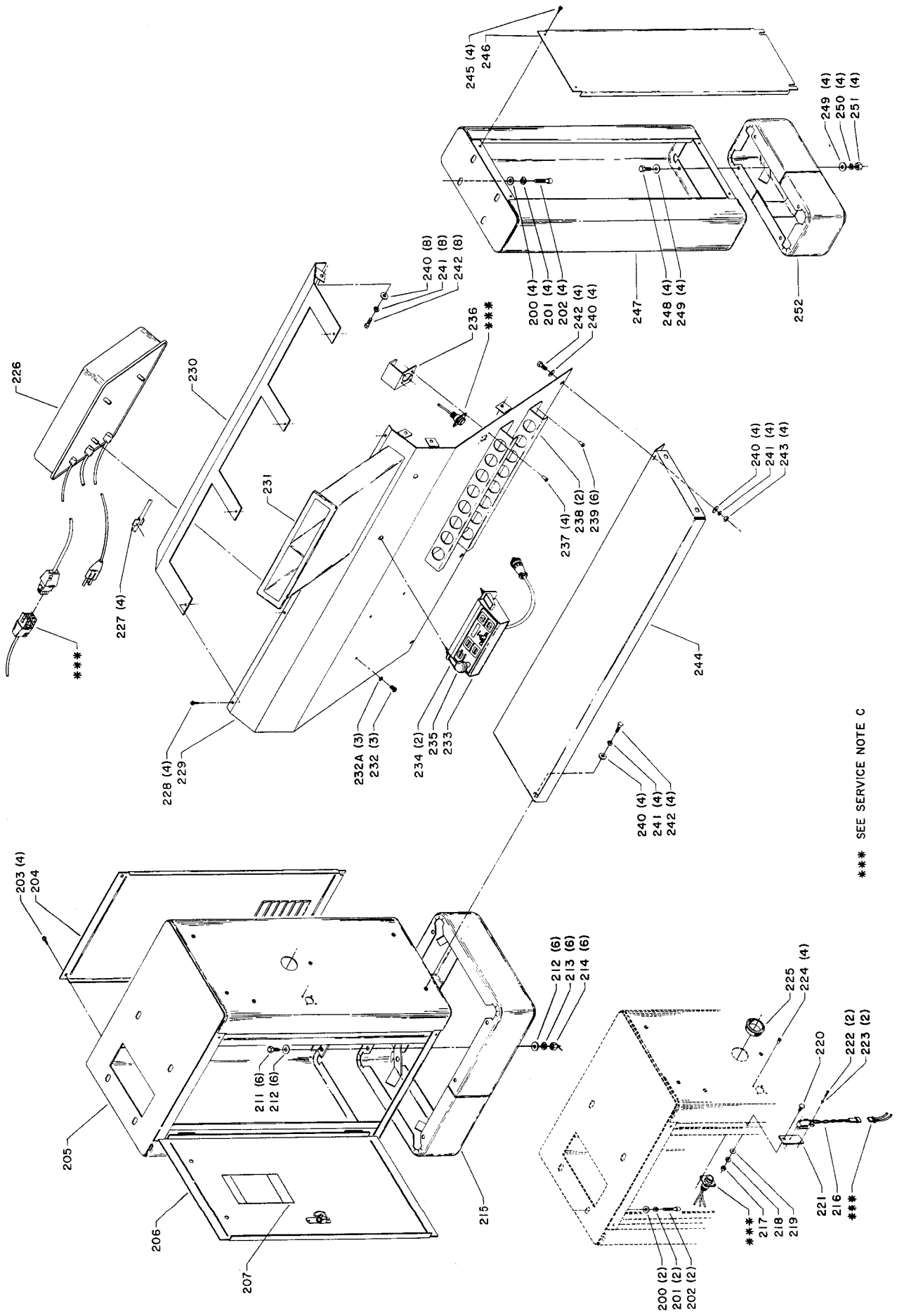
\* NOT SHOWN ASSEMBLED  
 \*\* NOT SHOWN

SERVICE NOTES:

A - When replacement becomes necessary install new part with Loctite.

B - Replacement of Ref No 58 handwheel or Ref No 60 screw requires operator to drill new part to accept Ref No 59 roll pin for proper assembly.

This parts list is provided to aid in obtaining service parts. Copies of the instruction and maintenance literature can be obtained through the Delta Technical Publications Department or through your local service outlet.



\*\*\* SEE SERVICE NOTE C

## REPLACEMENT PARTS

REF. NO.	PART NUMBER	DESCRIPTION
200	1243502	(DIN 125) 10mm Flat Washer
201	1243360	(DIN 7980) 10mm Lockwasher
202	1246100	(DIN 912) M10 X 20mm Soc Hd Screw
*	46-402P	Cabinet Complete, Const of:
203	901-06-423-1170	#10-32 X 5/8" Type F Self Tapping Screw
204	434-07-125-0072	Rear Access Panel
205	434-07-318-0006	Headstock Cabinet, Incl:
206	434-07-425-0001	Front Access Panel w/Hinges, Incl:
207	434-07-754-0001	Speed Chart
211	901-01-060-0607	5/16-18 X 3/4" Hex Hd Screw
212	904-01-010-1606	5/16" Flat Washer
213	904-02-020-1704	5/16" Lockwasher
214	902-01-010-5900	5/16-18 Hex Nut
215	434-07-305-0005	Headstock Sub Base Assembly
216	438-01-317-0111	Switch w/Cable Assembly, Incl:
217	902-01-120-1034	1/4-20 Hex Nut
218	904-02-020-1702	1/4" Lockwasher
219	904-01-010-1614	1/4" Flat Washer
220	901-11-023-1497	1/4-20 X 5/8" Carriage Bolt
221	434-07-014-0051	Bracket
222	901-02-053-1522	#4-40 X 9/16" Fil Hd Screw
223	904-02-020-1727	#4 Lockwasher
***	548-90-005-0015	Cable Assembly
224	903-03-034-1472	Rivet
225	438-01-011-0020	Insulator
226	434-07-131-0002	Power Controller Assembly, Incl:
**	584-85-004-2500	Fuse (See Service Note D)
227	434-07-027-0098	Half-U Cable Clip
228	901-05-213-1498	#10-32 X 1/4" Hex Washer Hd Screw
229	434-07-089-0101	Lower Pedestal Support
230	434-07-089-0102	Upper Pedestal Support
231	434-07-360-0095	Tool Holder Assembly
232	901-02-010-0509	1/4-20 X 1/2" Pan Hd Screw
232A	904-02-020-1704	1/4" Lockwasher
233	434-07-131-0001	Control Station, Incl:
234	537-85-004-0001	Latch Assembly
235	523-85-004-0001	Knob
236	434-07-054-0101	Guard
237	903-03-034-1472	Rivet
238	434-07-089-0033	Tool Holder
239	903-03-023-1465	3/16" Rivet
240	904-01-010-1605	5/16" Flat Washer
241	904-02-010-1703	5/16" Lockwasher
242	901-01-060-0607	5/16-18 X 3/4" Hex Hd Screw
243	902-01-010-1300	5/16-18 Hex Nut
244	434-07-089-0032	Pedestal Support Shelf
245	901-06-423-1170	#10-32 X 5/8" Type F Self Tapping Screw
246	434-07-125-0073	Access Panel
247	434-07-318-0007	Tailstock Cabinet
248	901-01-060-0607	5/16-18 X 3/4" Hex Hd Screw
249	904-01-010-1606	5/16" Flat Washer
250	904-02-020-1704	5/16" Lockwasher
251	902-01-010-5900	5/16-18 Hex Nut
252	434-07-305-0011	Tailstock Sub Base Assembly

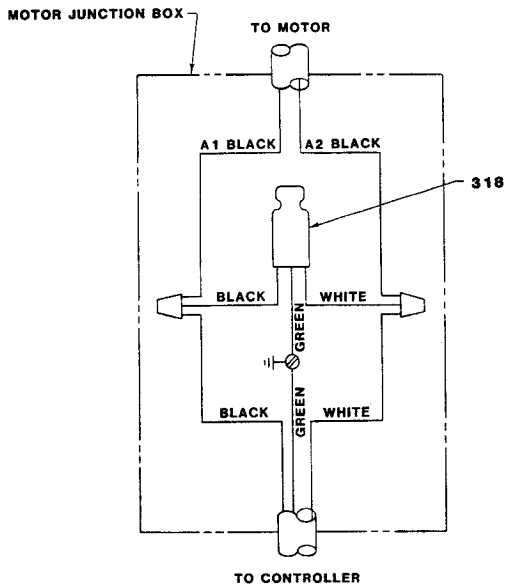
- \* NOT SHOWN ASSEMBLED
- \*\* NOT SHOWN
- \*\*\* SEE SERVICE NOTE C

### SERVICE NOTES:

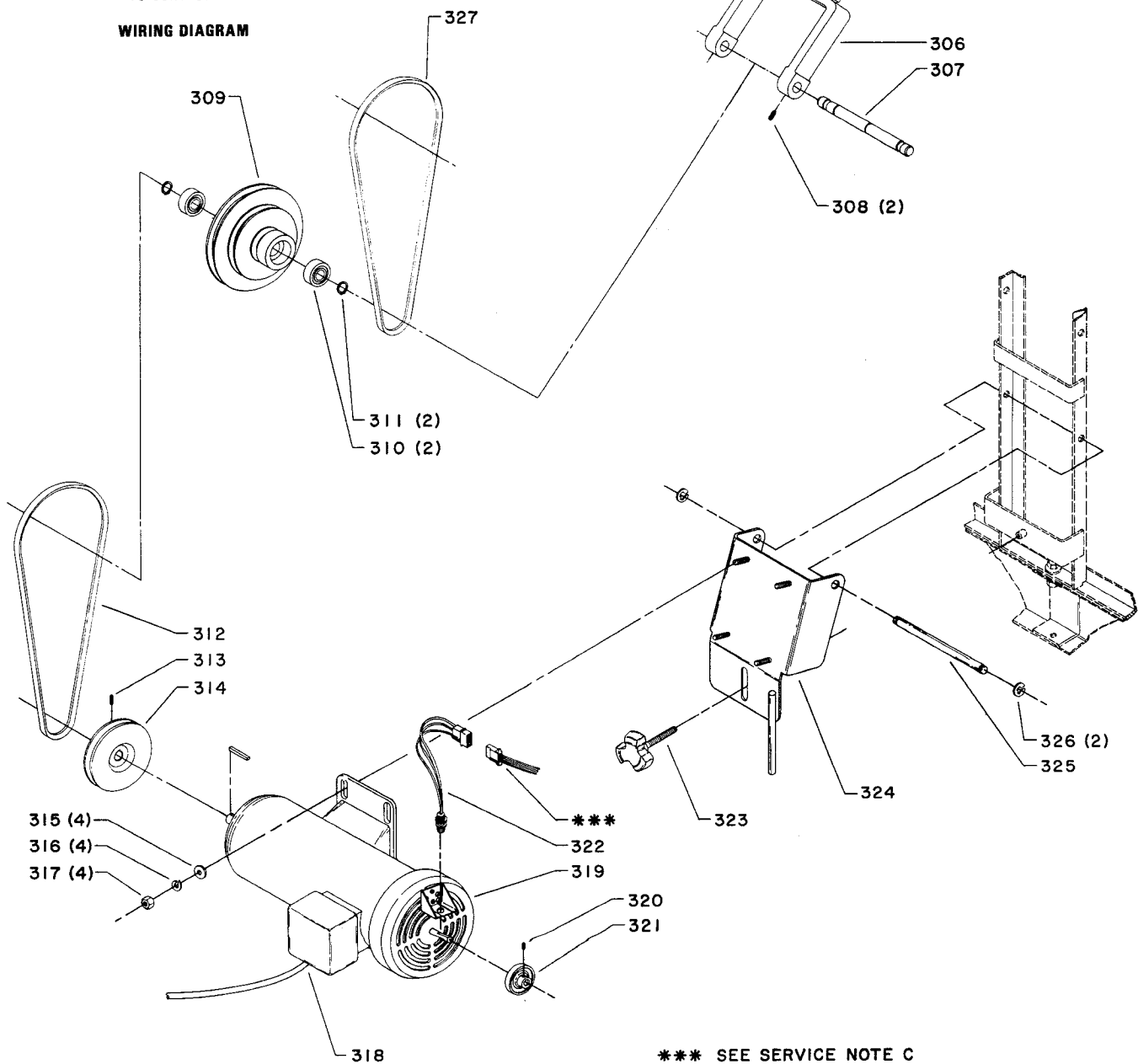
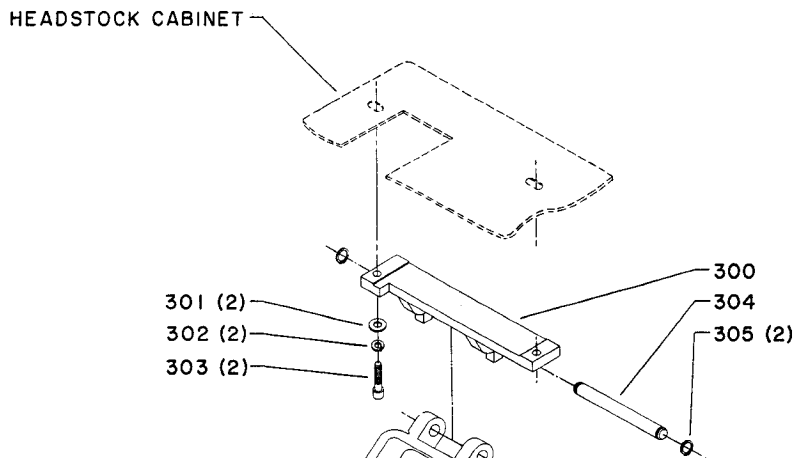
C - Cable Assembly 548-90-005-0015 is a complete wiring harness including connections labeled \*\*\*.

D - Although the controller contains three (3) fuses, only one (1) fuse, Part No. 584-85-004-2500 is user serviceable. This particular fuse is designed to protect the controller from damage due to physical overload. For example: repeatedly trying to start the lathe with the spindle lock engaged might cause this fuse to "blow" protecting other electronic components.

The other two (2) fuses are soldered in place permanently and not user serviceable. If either of those fuses "blow" other electronic components are also damaged and the entire controller must be replaced. Contact your nearest authorized service center. See product service bulletin ST189 for additional information.



WIRING DIAGRAM



\*\*\* SEE SERVICE NOTE C

## REPLACEMENT PARTS

REF. NO.	PART NUMBER	DESCRIPTION
*	46-402P	Cabinet Complete, Const of: (Cont'd)
300	434-07-089-0103	Yoke Support
301	1243502	(DIN 125) 10mm Flat Washer
302	1243360	(DIN 7980) 10mm Lockwasher
303	1246052	(DIN 912) M10 X 35mm Soc Hd Screw
304	434-07-106-0001	Yoke Support Shaft
305	434-07-079-0038	Retaining Ring
306	434-07-102-0001	Yoke
307	434-07-003-0001	Jackshaft
308	901-04-150-0202	1/4-20 X 1/2" Hex Soc Set Screw
309	434-07-130-0003	Jackshaft Pulley
310	1086894	Bearing
311	434-07-079-0038	External Retaining Ring
312	434-07-133-0002	V-Belt (37.50" O.C.)
313	901-04-150-0278	#10-32 X 1/2" Hex Soc Set Screw
314	434-07-130-0082	Motor Pulley
315	904-01-010-1605	5/16" Flat Washer
316	904-02-010-1703	5/16" Lockwasher
317	902-01-010-1703	5/16-18 Hex Nut
318	434-07-131-0003	Motor Filter
319	438-02-314-1060	Motor Assembly
320	901-04-150-1186	#10-32 X 1/4" Soc Set Screw
321	430-03-100-0001	Speed Sensor Rotor
322	434-07-302-0002	Speed Sensor Cable Assembly
323	434-07-327-0086	Screw Assembly
324	434-07-372-0079	Motor Mounting Plate
325	434-07-104-0051	Motor Mounting Shaft
326	904-15-012-0052	E-Ring
***	548-90-005-0015	Cable Assembly (See Service Note C)
327	1330767	V-Belt (47.50" O.C.)
* NOT SHOWN ASSEMBLED		
** NOT SHOWN		
*** SEE SERVICE NOTE C		

### SERVICE NOTES:

*C - Cable Assembly 548-90-005-0015 is a complete wiring harness including connections labeled \*\*\*.*

*This parts list is provided to aid in obtaining service parts. Copies of the instruction and maintenance literature can be obtained through the Delta Technical Publications Department or through your local service outlet.*