

2-SPEED HEAVY DUTY WOOD SHAPERS

WS-2B

43-370F, 43-372F, 43-373F, 43-375F

With Interchangeable 1/2" and 3/4" Spindles

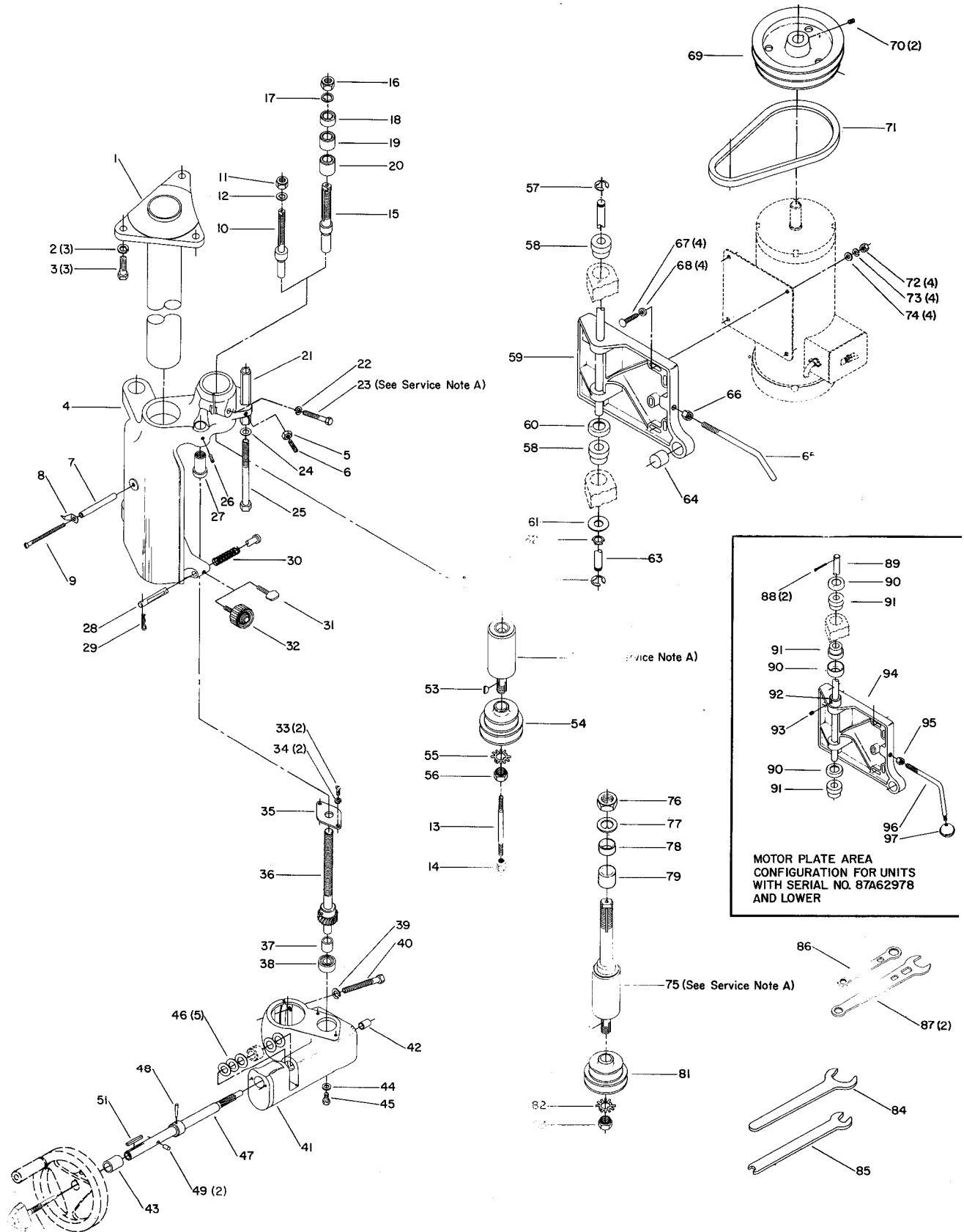
432-02-651-0006

43-384F, 43-385F, 43-386F

With 1" Solid Spindles

Revised 4-28-88

UP TO SERIAL No. 88E28264



REPLACEMENT PARTS

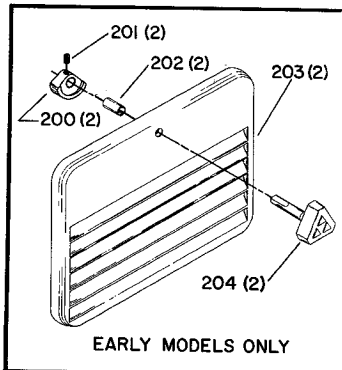
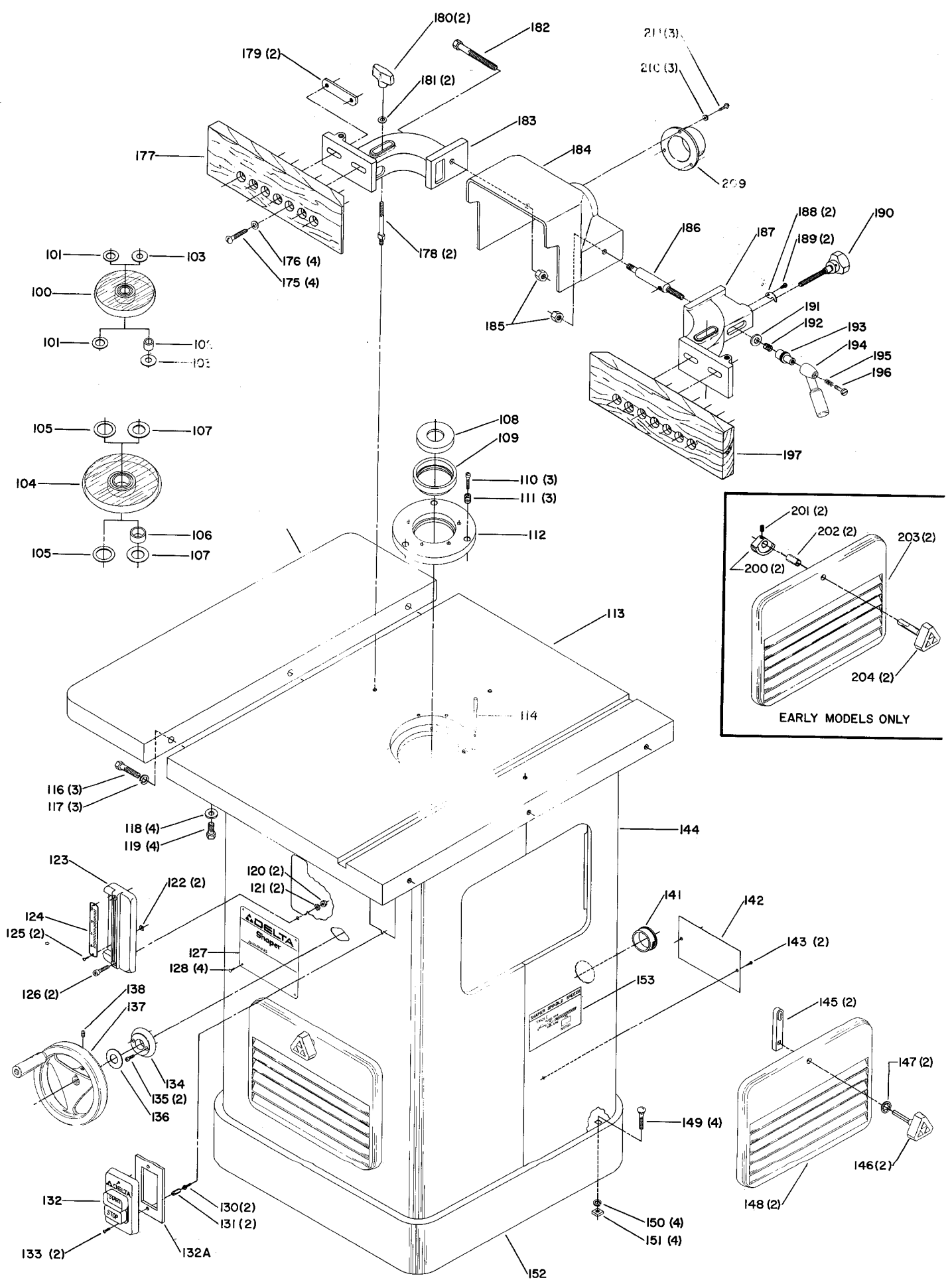
REF. NO.	PART NO.	DESCRIPTION	REF. NO.	PART NO.	DESCRIPTION
1	432-02-403-5001	Flange Assembly	52	432-02-385-0003	Sleeve Assembly (For 1/2 & 3/4" Spindle Models Only), Incl:
2	904-02-020-1705	1/2" Lockwasher	53	927-01-100-2606	Hi-Pro Key
3	901-01-060-0672	1/2-20 x 1 1/4" Hex Hd Cap Screw	54	41-107	2-Speed Spindle Pulley
4	432-02-012-0001	Spindle Housing Assembly, Incl:	55	432-02-079-0001	Retainer
5	902-01-010-1300	5/16-18 Hex Nut	56	902-07-030-7171	Nut
6	901-04-193-1403	5/16-18 x 1" Brass Screw	57	904-15-060-7443	Retaining Ring
7	432-02-104-5001	Spacer	58	932-01-010-2860	Bushing
8	422-04-075-5001	Pointer	59	432-02-005-0001	Motor Plate
9	901-02-010-0915	1/4-20 x 3 1/2" Round Hd Screw	60	432-02-079-5001	Retainer
10	43-347	1/2" Spindle (For 1/2 & 3/4" Spindle Models Only), Incl:	61	904-01-010-1611	Washer
11	902-01-201-2575	Special Nut	62	928-07-010-7378	Spring Washer
12	904-05-010-1646	Special Keyed Lockwasher	63	432-02-106-0001	Shaft
13	952-01-111-3261	Tie Rod (For 1/2 & 3/4" Spindle Models Only)	64	432-02-016-5001	Rubber Bumper
14	902-01-201-2584	Special Nut (For 1/2 & 3/4" Spindle Models Only)	65	432-02-067-0002	Lever
15	43-937	3/4" Spindle (For 1/2 & 3/4" Spindle Models Only), Incl:	66	902-01-201-2579	Special Nut
16	902-01-131-3082	Special Nut	67	901-11-020-0830	5/16-18 x 1 1/4" Carriage Bolt
17	904-05-010-6662	Special Keyed Lockwasher	68	904-10-031-3810	Collar
18	904-10-031-4506	1 1/4" Dia. - 1/2" Thick Spacing Collar (For 3/4" Spindle Model Only)	69	41-106	7/8" Bore 2-Speed Motor Pulley (See Service Note C), Incl:
19	904-10-031-4507	1 1/4" Dia. - 3/4" Thick Spacing Collar (For 3/4" Spindle Model Only)	70	901-04-150-0206	5/16-18 x 15/16" Hex Soc Set Screw
20	904-10-031-4508	1 1/4" Dia. - 1" Thick Spacing Collar (For 3/4" Spindle Model Only)	71	49-101	29 1/8" O.C. V-Belt
21	432-02-110-5001	Hex Guide Post	72	902-01-010-1300	5/16" Hex Nut
22	904-02-020-1704	3/8" Lockwasher	73	904-02-010-1703	5/16" Lockwasher
23	901-01-060-0646	3/8-16 x 2" Hex Hd. Cap Screw (See Service Note A)	74	904-01-010-1604	1/4" Flat Washer
24	904-01-031-2905	1/2" Washer	75	43-822	1" Spindle (For 1" Spindle Models only, See Service Note A), Incl:
25	901-01-060-0685	1/2-20 x 5" Hex Hd. Cap Screw	76	902-01-201-8553	Special Nut
26	901-04-190-0201	5/16-18 x 5/16" Hex Soc. Set Screw	77	904-05-010-6674	Special Keyed Washer
27	432-02-105-5002	Raising Nut	*	43-823	Spacer Collar Set (For 1" Spindles Only) Const. of:
28	432-02-071-0001	Pin	78	432-02-105-0002	1/2" Collar
29	905-05-040-2106	Cotter Pin	79	432-02-105-0001	1" Collar
30	432-02-122-0001	Spring	80	927-01-100-2606	Hi-Pro Key
31	901-04-260-1528	Thumb Screw (Current Models Only)	81	41-107	2-Speed Spindle Pulley
32	432-02-411-0001	Lock Knob (Early Models Only)	82	432-02-079-0001	Retainer
33	901-03-040-8015	1/4-20 x 1/2" Button Hd. Screw	83	902-07-030-7171	Nut
34	904-02-020-1702	1/4" Lockwasher	84	404-01-010-5001	Wrench
35	432-02-031-5001	Cover Plate	85	955-01-040-1485	Wrench
36	432-02-412-5001	Raising Screw Assembly	86	955-01-020-0023	Wrench
37	904-10-031-4514	Collar	87	955-01-050-1467	Wrench (For 1/2 & 3/4" Spindle Models Only)
38	920-04-010-7273	Ball Bearing	<u>PARTS LISTED BELOW FOR USE ON UNITS WITH SERIAL NUMBER 87A92978 & LOWER</u>		
39	904-02-010-1716	7/16" Lockwasher	88	905-05-040-2106	Cotter Pin
40	901-01-060-3101	7/16-14 x 3" Hex Hd. Cap Screw	89	432-02-108-5001	Rod
41	432-02-314-0001	Adjusting Screw Bracket, Incl:	90	432-02-079-5001	Bushing Retainer
42	920-75-011-2794	Bushing (See Service Note B)	91	932-01-010-2860	Rubber Bushing
43	920-75-011-3933	Bushing (See Service Note B)	92	434-01-404-0001	Collar set, Incl:
44	904-01-010-1620	5/16" Flat Washer	93	901-04-190-0201	5/16-18 x 5/16" Hex Soc Set Screw
45	901-01-060-0605	5/16-18 x 1/2" Hex Hd. Cap Screw	94	432-02-005-0001	Motor Plate
46	904-07-010-5565	3/4" Fiber Washer	95	902-01-201-2579	Special Nut
47	432-02-406-5001	Pointer Shaft Assembly, Incl:	96	432-02-067-0002	Lever
48	905-01-010-2715	Roll Pin	97	931-01-011-4091	Knob
49	422-04-074-0001	Plug	* NOT SHOWN ASSEMBLED		
50	422-04-412-0007	Lock Knob			
51	927-03-010-2650	Key			

SERVICE NOTES:

A - When replacing Spindle Cartridge (Ref. No. 52 or 75), Bolt (Ref. No. 23) should be tightened 7 to 10 foot pounds.

B - Replacement bushings are furnished undersized and must be reamed to fit after installation. Bushing, Part No. 920-75-011-2794 (Ref No. 42) must be reamed to .437/.436. Bushing, Part No. 920-75-011-3933 (Ref No. 43) must be reamed to .747/.746.

C - A 3/4" bore version of this pulley is also available as Catalog No. 41-105.



EARLY MODELS ONLY

REPLACEMENT PARTS

REF. NO.	PART NO.	DESCRIPTION	REF. NO.	PART NO.	DESCRIPTION
100	43-550	4 1/2" Dia. Spindle Guard (For 1/2" & 3/4" Spindle Models Only) Incl:	149	901-11-020-0834	5/16-18 x 3/4" Carriage Bolt
101	432-02-104-0006	Spacer (For 3/4" Spindles Only)	150	904-02-010-1703	5/16" Lock Washer
*	43-555	Adapter (For 1/2" Spindles Only), Const of:	151	902-02-040-1303	5/16-18 Sq Nut
102	432-02-017-0004	Bushing	152	1087066	Cabinet Base
103	432-02-104-0008	Spacer	153	432-02-754-0003	Speed Chart
104	43-552	6 1/2" Dia. Spindle Guard (For 1 & 1 1/4" Spindle Models Only), Incl:	*	43-830	Fence Assembly, Const of:
105	432-02-104-0007	Spacer (For 1 1/4" Spindles Only)	175	901-02-010-0523	5/16-18 x 1 1/2" Rd Hd Screw
*	43-557	Adapter (For 1" Spindles Only), Const of:	176	904-01-010-1620	5/16" Washer
106	432-02-017-0002	Bushing	177	432-02-043-0002	Fence (Left Hand)
107	432-02-104-0010	Spacer	178	432-01-111-0003	Stud
108	432-01-063-0001	Small Table Insert	179	432-01-004-0003	Bar
109	432-02-063-5001	Table Insert	180	424-12-060-0003	Knob
110	901-02-050-0725	1/4-20 x 1" Fil Hd Screw	181	904-01-031-2937	5/16" Washer
111	432-02-112-5002	Special Screw	182	901-01-060-0633	7/16-14 x 3 1/4" Hex Hd Screw
112	432-02-089-5006	Support	183	432-01-089-0013	Support
113	432-02-091-5001	Table	184	432-02-031-0001	Cover
114	905-03-010-2422	Starting Pin	185	902-01-201-2579	7/16-14 Hex Nut
115	43-349	Extension Wing, Incl:	186	432-01-111-0004	Stud
116	901-01-060-0681	7/16-20 x 1 1/2" Hex Hd Cap Screw	187	432-01-089-0012	Support
117	904-02-010-1716	7/16" Lockwasher	188	432-01-047-0001	Finger
118	904-10-031-2097	Special Washer	189	901-02-010-0551	#10-32 x 1/4" Rd Hd Screw
119	901-01-060-0680	7/16-20 x 3/4" Hex Hd Cap Screw	190	1087647	Hand Knob Assy
120	902-01-120-1034	1/4-20 Hex Nut	191	904-10-031-2097	Special Washer
121	904-03-030-1757	1/4" Ext Tooth Lockwasher	192	928-01-021-4125	Spring
122	902-02-040-1301	#6-32 Sq. Nut	193	432-01-027-0004	Serrated Nut
123	432-02-014-5002	Scale Bracket	194	406-03-033-0001	Adjusting Clamp Handle
124	951-02-010-7825	Scale	195	406-03-122-0002	Compression Spring
125	901-02-010-0565	#6-32 x 3/16" Rd Hd Screw	196	406-03-112-0003	Special Screw
126	901-03-010-3345	1/4-20 x 1" Soc Hd Cap Srew	197	432-02-043-0001	Fence (Right Hand)
127	432-02-137-0002	Nameplate	*	422-04-403-0005	Door Assembly, Const. of:
128	1087794	Rivit	200	422-04-019-5001	Cam
130	402-07-111-5002	Stud	201	901-04-150-0206	5/16-18 x 5/16" Hex Soc Set Screw
131	402-07-104-5007	Spacer	202	422-04-368-0001	Spacer
132	438-01-308-0009	Switch Cover Assembly	203	422-04-331-0003	Door
132A	422-04-116-0001	Gasket	204	422-04-368-0001	Shaft w/Knob
133	0905907	#6-32 x 1/4" Rd Hd Screw	<u>NOT INCLUDED WITH BASIC MACHINE</u>		
134	432-02-031-5002	Cover	209	43-829	Vacuum Adapter, Incl:
135	901-02-551-2858	#10-32 x 7/16" Spec Fil Hd Screw	210	904-01-010-1610	#9 Washer
136	904-07-010-5569	3/4" Fiber Washer	211	901-02-010-0582	#10-32 x 5/8" Round Hd Screw
137	930-03-991-0468	Handwheel Assy, Incl:	* NOT SHOWN ASSEMBLED		
138	901-04-190-0201	5/16-18 x 5/16" Hex Soc Set Screw			
141	438-01-011-0020	Insulator			
142	1087070	Cover Plate			
143	901-05-211-7379	#10A x 1/2" Hex Hd Sht Mtl Screw			
144	432-02-318-5001	Cabinet Assembly, Incl:			
*	422-04-403-0005	Door Assembly, Const. of:			
145	422-04-068-0001	Latch			
146	422-04-406-0004	Shaft w/Knob			
147	902-03-023-1467	Push Nut			
148	422-04-331-0003	Door			

This parts list is provided to aid in obtaining service parts. Operational and maintenance information is contained in a separate owner's manual which is available through your local service outlet.

Doc. 1903G