

REPLACEMENT PARTS

Ref. No.	Part No.	Description	Ref. No.	Part No.	Description
1	432-09-112-0004	SPECIAL SCREW (SEE NOTE A)	38	902-01-010-1300	5/16-18 HEX NUT
2	432-09-138-0001	KNOB (SEE NOTE A)	39	904-02-010-1703	5/16" LOCK WASHER
3	432-09-754-0012	DUST CHUTE WARNING LABEL (SEE NOTE C)	40	901-01-060-0606	5/16-18 X 5/8" HEX HD SCREW
	432-09-754-0002	DUST CHUTE WARNING LABEL (SEE NOTE D)	41	432-01-063-0001	TABLE INSERT
4	432-09-112-0003	#06-32 X 3/8" THD FORM SCREW	42	432-02-063-0002	TABLE INSERT - INTERMEDIATE
5	432-09-036-0001	DUST DEFLECTOR	43	905-03-013-1493	TAPER PIN
6	432-09-106-0001	SHAFT/SEGMENT CLAMP	44	432-09-391-0001	TABLE
7	432-09-106-0002	KNOB ASSY	45	432-09-122-0004	COUNTER BALANCE SPRING
8	432-09-122-0005	SPRING WASHER	46	432-09-079-0002	SPRING CAPTURE
9	432-09-089-0001	FENCE SUPPORT	47	904-02-010-1703	5/16" LOCK WASHER
10	432-09-754-0013	FENCE WARNING LABEL (SEE NOTE C)	48	901-01-060-0606	5/16-18 X 5/8" HEX HD SCREW
	432-09-754-0003	FENCE WARNING LABEL (SEE NOTE D)	49	432-09-125-0002	SIDE PANEL (SEE NOTE C)
11	432-09-027-0001	SEGMENT CLAMP		432-09-125-0001	SIDE PANEL (SEE NOTE D)
12	901-03-030-0811	3/8-16 X 1" FLAT HD SCREW	50	432-09-124-0003	BACK PANEL (SEE NOTE C)
13	902-01-123-1860	1/4-20 HEX NUT (SEE NOTE C)		432-09-124-0001	BACK PANEL (SEE NOTE D)
	902-01-120-1034	1/4-20 HEX NUT (SEE NOTE D)	51	904-01-010-1606	3/8" FLAT WASHER
14	432-09-072-0003	DEFLECTOR PLATE	52	901-01-060-5763	SCREW
15	432-09-112-0003	#06-32 X 3/8" THD FORM SCREW	53	901-11-023-1476	5/16-18 X 5/8" CARRIAGE HD SCREW
*	432-09-343-0001	FENCE ASSY, CONST OF:	54	902-01-013-1859	5/16-18 HEX NUT (SEE NOTE C)
16	432-09-043-0002	FENCE SEGMENT - LARGE (1)		902-01-010-1300	5/16-18 HEX NUT (SEE NOTE D)
17	432-09-043-0001	FENCE SEGMENT - SMALL (9)	55	904-02-010-1703	5/16" LOCK WASHER
18	432-09-067-0001	CLAMP LEVER	56	904-01-013-1855	5/16" FLAT WASHER (SEE NOTE C)
19	n 904-01-033-1857	FLAT WASHER (SEE NOTE C)		904-01-010-1620	5/16" FLAT WASHER (SEE NOTE D)
	904-01-031-4993	FLAT WASHER (SEE NOTE D)	57	432-09-115-0002	SHELF (SEE NOTE C)
20	902-02-040-1306	1/4-20 SQUARE NUT		432-09-115-0001	SHELF (SEE NOTE D)
21	432-09-106-0004	KNOB ASSY	58	432-09-066-0002	LEG (SEE NOTE C)
22	432-09-103-0001	WASHER		432-09-066-0001	LEG (SEE NOTE D)
23	432-09-072-0001	FENCE COVER PLATE	59	902-01-210-1072	5/16-18 LOCK NUT
24	901-03-010-3345	1/4-20 X 1" HEX SOC HD SCREW	60	904-01-010-1620	FLAT WASHER
25	904-02-020-1702	1/4" LOCK WASHER	61	432-09-016-0001	GROMMET
26	904-03-020-1784	INT TOOTH WASHER	62	901-11-023-1476	5/16-18 X 5/8" CARRIAGE HD SCREW
27	432-09-112-0003	#06-32 X 3/8" THD FORM SCREW	63	432-09-423-0002	COVER ASSY (SEE NOTE C), INCL:
28	432-09-372-0001	SWITCH FACEPLATE (SEE NOTE C)		432-09-423-0001	COVER ASSY (SEE NOTE D), INCL:
		INCLUDES REF. 28	64	432-09-754-0011	WARNING DECAL (SEE NOTE C)
	432-09-072-0005	SWITCH FACEPLATE (SEE NOTE D)		432-09-754-0001	WARNING DECAL (SEE NOTE D)
29	432-09-754-0014	OFF/ON DECAL (SEE NOTE C)	65	432-09-116-0001	TRIM STRIP
	432-09-754-0004	OFF/ON DECAL (SEE NOTE D)	66	537-85-004-0001	LATCH W/BUSHING & NUT
30	424-01-014-0002	SWITCH BRACKET	67	43-440	4-1/2" SPINDLE GUARD
31	438-01-628-0004	SWITCH			(FOR 1/2" SPINDLES ONLY), INCL.:
32	432-09-314-0005	SWITCH ARM ASSY (CMO, SEE NOTE B)	68	432-02-104-0006	SPACER
32A	432-09-314-0004	SWITCH ARM ASSY (EMO, SEE NOTE B)	*	43-555	ADAPTER (1/2" SPINDLES ONLY), INCL:
33	432-09-112-0003	#06-32 X 3/8" THD FORM SCREW	69	432-02-017-0004	BUSHING
34	904-01-010-1605	3/8" FLAT WASHER	70	432-02-104-0008	SPACER
35	901-01-060-0613	5/16-18 X 1 3/4" HEX HD SCREW	71	432-09-101-0001	WRENCH
36	438-01-004-0085	HEYCO BUSHING - 3/4" (SEE NOTE B)	73	n 432-09-628-0004	SWITCH HARDWARE PACK
36A	438-01-004-0062	HEYCO BUSHING - 5/8" (SEE NOTE B)	74	n 432-09-628-0006	STAND HARDWARE PACK
37	432-09-014-0001	INDEX BRACKET			
			*		NOT SHOWN ASSEMBLED

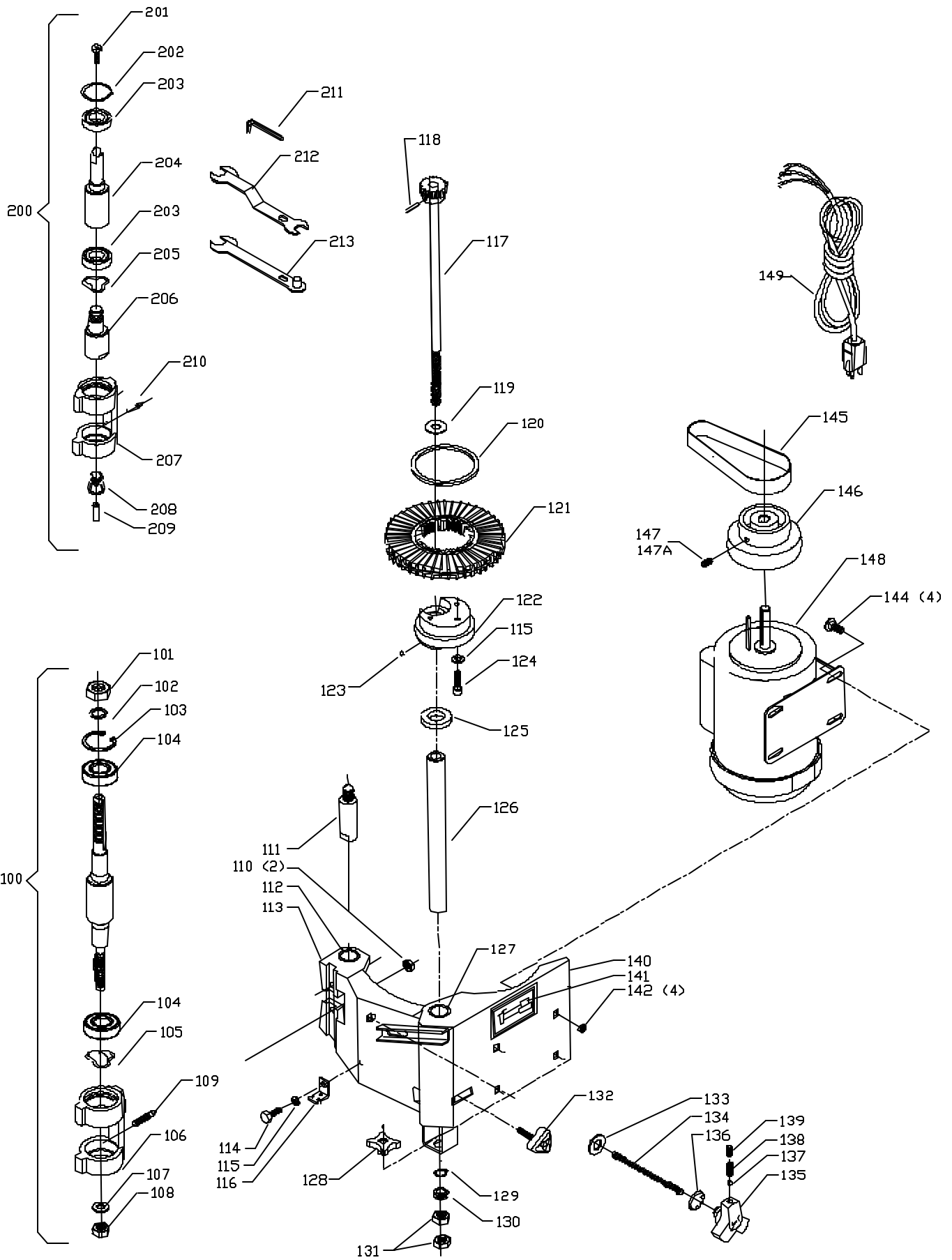
NOTES:

A: Install new part with Loctite to prevent loosening during operation.

B: Early Switch Arms had two (2) 5/8" diameter bushing holes, current Switch Arms have two (2) 3/4" diameter bushing holes.

C: S/N's beginning with 02A and above.

D: S/N's beginning with 01L and below.



REPLACEMENT PARTS

Ref. No.	Part No.	Description	Ref. No.	Part No.	Description
100	432-09-385-0003	SPINDLE ASSY (SEE NOTE C), INCL:	138	432-09-122-0002	SPRING
	432-09-385-0002	SPINDLE ASSY (SEE NOTE D), INCL:	139	901-04-150-0231	5/16-18 X 3/8" SET SCREW (SEE NOTE G)
101	902-01-131-3082	3/4-14 NUT	140	432-09-314-0003	MOTOR BRACKET ASSY
102	904-05-010-6662	KEYED LOCK WASHER	141	432-09-754-0015	SPINDLE SPEED DECAL (SEE NOTE C)
103	432-09-079-0001	INT RETAINING RING		432-09-754-0005	SPINDLE SPEED DECAL (SEE NOTE D)
104	432-09-139-0001	BEARING	142	902-01-503-1514	5/16-18 FLANGE NUT
105	432-09-122-0001	LOAD SPRING	144	901-11-020-0834	5/16-18 X 3/4" CARRIAGE HD SCREW
106	432-09-102-0001	SPINDLE HOUSING	145	432-09-133-0001	DRIVE BELT
107	904-05-010-1646	KEYED LOCK WASHER	146	432-09-130-0001	PULLEY, INCL:
108	902-01-201-2575	1/2-16 NUT	147	901-04-150-0202	1/4-20 X 1/2" SET SCREW (CMO)
109	432-09-111-0001	SPINDLE HOUSING STUD (SEE NOTE E)	147A	901-04-150-0278	#10-32 X 1/2" SET SCREW (EMO)
110	432-09-088-0001	KEPS NUT	148	62-229	MOTOR, INCL:
111	432-09-108-0001	GUIDE ROD	*	438-01-017-0262	REVERSING SWITCH
112	432-09-017-0001	BUSHING	149	438-01-302-0555	POWER CORD
113	432-09-014-0004	ELEVATING BRACKET			
114	901-01-060-0606	5/16-18 X 5/8" HEX HD SCREW			
115	904-02-010-1703	5/16" LOCK WASHER			
116	432-09-079-0002	SPRING CAPTURE	200	AVAILABLE AS AN ACCESSORY	
117	432-09-312-0001	JACK SCREW ASSY, INCL:	201	43-357	STUB/ROUTER SPINDLE ASSY, INCL:
118	905-01-010-2732	5/32" X 1" SPRING PIN	202	901-03-100-6144	5/16-18 X 1 1/8" FLAT HD SCREW
119	432-09-104-0003	THRUST WASHER	203	432-09-079-0001	INT RETAINING RING
120	432-09-104-0002	FELT RING	204	432-09-139-0001	BEARING
121	432-09-100-0001	HANDWHEEL	205	1343460	STUB SPINDLE ARBOR
122	432-09-107-0001	TUBE SUPPORT HUB	206	432-09-122-0001	SPRING
123	901-04-150-0206	5/16-18 X 5/16" SET SCREW	207	1343461	COLLET ADAPTER
124	901-03-010-0770	5/16-18 X 1 1/4" HEX SOC HD SCREW	207	432-09-102-0001	SPINDLE HOUSING
125	432-09-016-0003	BUMPER	208	18051	1/2" COLLET
126	432-09-055-0001	GUIDE TUBE	209	1343409	1/4" ADAPTER
127	432-09-017-0001	BUSHING	210	432-09-111-0001	SPINDLE HOUSING STUD (SEE NOTE E)
128	432-09-063-0003	NYLON NUT	211	955-03-010-0010	7/32" HEX WRENCH
129	904-15-011-7111	EXT RET RING (SEE NOTE F)	212	1343433	7/8 X 41/64 OFFSET OPEN END WRENCH
130	432-09-016-0002	GROMMET	213	1343432	1-1/4" OPEN END WRENCH
131	432-09-088-0004	ACME NUT	*	NOT SHOWN ASSEMBLED	
132	432-09-438-0002	KNOB	**	NOT SHOWN	
133	904-01-010-1618	9/16" FLAT WASHER			
134	432-09-111-0002	STUD			
135	432-09-332-0003	TENSION KNOB ASSY (SEE NOTE G), INCL:			
136	432-09-079-0004	RETAINER			
137	432-09-068-0001	BALL DETENT			

NOTES:

C: S/N's beginning with 02A and above.

D: S/N's beginning with 01L and below.

E: Install new parts with Loctite to prevent loosening during operation.

F: Retaining Ring must be installed with sharp edge down.

G: Set Screw to be tightened so that bell will detent will ratchet between 25 & 30 in/lbs.

LOCTITE is a registered trademark of the LOCTITE CORP., Newington, Ct.

STANDARD SAFETY EQUIPMENT

In order to promote tool safety, Delta Machinery strictly enforces the policy of repairing or replacing any damaged or missing standard safety equipment on machines presented to Delta Authorized Service Centers for service/repairs. Any product which is presented to a Delta Authorized Service Centers for repairs which contains missing or damaged standard safety equipment will have that equipment repaired or replaced and the customer will be charged for any such service/repairs. Customers can avoid such charges only if the missing safety component is supplied to the service center at the time of repair.

This parts list is provided to aid in obtaining service parts. Copies of the instruction and maintenance literature can be obtained through the Delta Technical Publications Department or through your service outlet.