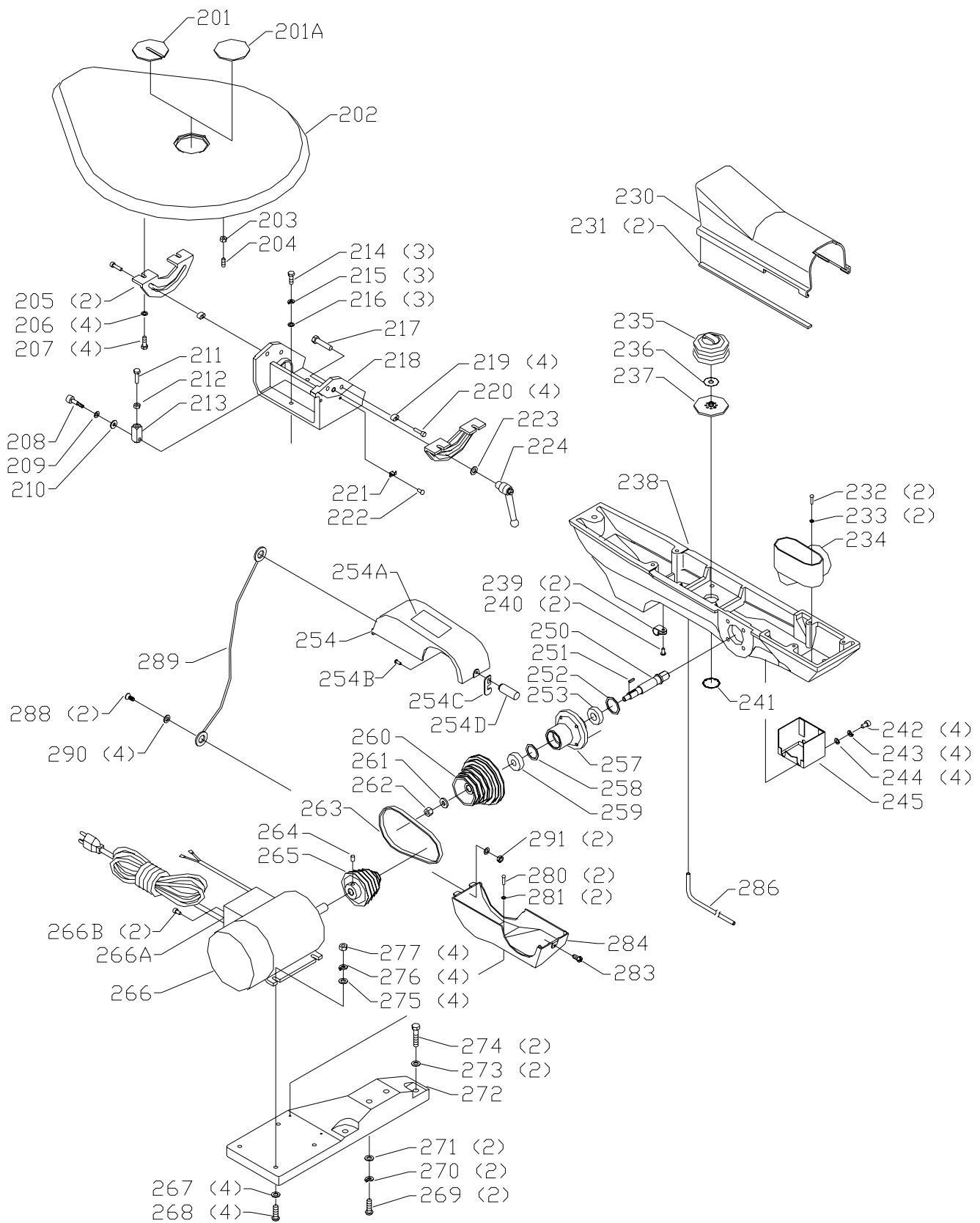


# REPLACEMENT PARTS

Ref.				Ref.		
<u>No.</u>	<u>Part No.</u>	<u>Description</u>		<u>No.</u>	<u>Part No.</u>	<u>Description</u>
1	n 901-02-050-5634	6-32 X 1/2" ROUND HD SCREW		57B	904-01-010-1602	3/16" FLAT WASHER
2	1342281	WEDGE		58	901-02-010-0564	6-32 X 3/8" ROUND HD SCREW
3	1342285	UPPER BRACKET		59	1342274	HOLD DOWN BAR
4	1342261	BUSHING		60	1347328	HOLD DOWN FOOT
5	901-04-150-1186	10-32 X 1/4" HEX SOC SET SCR (NOTE A)		61	n 900227	M6.4 FLAT WASHER
6	1342268	UPPER BARREL		62	904-02-020-1702	1/4" LOCK WASHER
7	1342260	BUSHING		63	901-03-010-0229	1/4-20 X 1/2" HEX SOC HD SCREW
8	1342284	UPPER ARM		70	901-02-010-0564	6-32 X 3/8" ROUND HD SCREW
9	1342267	SPACER		71	1342266	COVER
10	1342302	SPRING WASHER		72	1342262	LOWER BARREL
11	1342269	PIVOT BOLT		73	1342263	LINK ROD
12	1342294	OIL CUP		74	n 901-02-050-5634	6-32 X 1/2" ROUND HD SCREW
13	1342254	4-40 X 1 1/16" HEX SOC HD SCREW		75	1342281	WEDGE
13A	1340311	FLAT WASHER		76	1342261	BUSHING
14	1342242	COVER		77	1342287	LOWER BRACKET
15	1342241	SUPPORT		78	1342283	LOWER ARM
16	902-01-120-5432	4-40 HEX NUT		79	1342296	PIN
17	1330670	EXT RET RING		80	n 901-02-050-5634	6-32 X 1/2" ROUND HD SCREW
18	1344032	EXT RET RING		81	1342281	WEDGE
19	1342308	SPRING		82	1342286	LOWER CHUCK BRACKET
24	1342246	SHAFT		83	1347380	EXT RET RING
25	1342249	TENSION LEVER		84	1342297	SLEEVE
25A	1340302	SPECIAL WASHER		85	1342301	SPRING WASHER
25B	1340303	SPRING		*	n 40-251	QUICK SET BLADE CHUCK, INCL.:
26	1342253	PIVOT PIN		86	1347103	M4 X 18MM HEX HD SCREW
27	1342245	LINK		87	1346120	BLADE CLAMP
*	n 40-251	QUICK SET BLADE CHUCK, INCL.:		88	1346124	CAM
28	1342256	SPACER		89	1346121	PAD
29	1346122	SPRING		90	1346123	BUSHING
30	1347101	SPRING		91	1347101	SPRING
31	1347374	SPECIAL NUT		92	1346122	SPRING
32	1346123	BUSHING		93	1347374	SPECIAL NUT
33	1346121	PAD		94	902-01-120-1204	8-32 HEX NUT
34	1346124	CAM		95	1343050	1/2" CABLE CLAMP
35	1346120	BLADE CLAMP		96	901-03-010-3322	10-24 X 1/2" HEX SOC HD SCREW
36	1347103	M4 X 18MM HEX HD SCREW		97	901-03-010-0757	5/16-18 X 3/4" HEX SOC HD SCREW
37	901-03-010-0222	1/4-20 X 5/8" HEX SOC HD SCREW		98	1342259	C-FRAME, INCL:
38	1342258	ARM, INCL:		99	1346088	WARNING LABEL
38A	1346084	NAMEPLATE		100	901-02-030-0459	8-32 X 3/4" FLAT HD SCREW
38B	1346085	NAMEPLATE		101	901-03-010-0757	5/16-18 X 3/4" HEX SOC HD SCREW
39	1347525	RATCHET HANDLE		110	1342290	DRIVE HUB
40	1342407	SWITCH		111	1349948	SPACER
41	1342295	SWITCH COVER		112	n 900363	DRIVE LINK ASSY
42	901-02-010-0554	8-32 X 1/2" ROUND HD SCREW		114	1349947	SHOULDER BOLT
43	1246164	M4.2 X 13MM PAN HD SCREW		115	1347409	WASHER
44	902-02-040-1306	1/4-20 SQUARE NUT		116	1347358	DRIVE COLLAR
45	1347404	JAM NUT		117	1347390	SPECIAL NUT
46	901-02-010-0564	6-32 X 3/8" ROUND HD SCREW		118	1347390	SPECIAL NUT
47	904-01-031-2912	FLAT WASHER		119	1347390	SPECIAL NUT
48	1342299	SPACER		120	1347372	COLLAR
49	1342300	TORSION SPRING		121	1246102	M5.3 FLAT WASHER
50	901-02-010-0564	6-32 X 3/8" ROUND HD SCREW		122	1350431	10-32 X 1" HEX SOC HD SCREW
51	1342298	BUMPER		123	1246102	M5.3 FLAT WASHER
52	1343050	1/2" CABLE CLAMP		124	901-03-010-8073	10-32 X 7/8" HEX SOC HD SCREW
53	901-02-010-0564	6-32 X 3/8" ROUND HD SCREW		125	904-01-010-1603	1/4" FLAT WASHER
55	1342289	AIR NOZZLE		126	1347408	SHOULDER BOLT
56	1342280	HOOK		127	901-04-150-9239	1/4-20 X 1/4" HEX SOC SET SCR (NOTE A)
57	1342282	COVER PLATE		130	OPTIONAL	BLADE
57A	1087576	08 X 1/2" PAN HD SCREW		132	432-07-101-0004	5MM HEX WRENCH

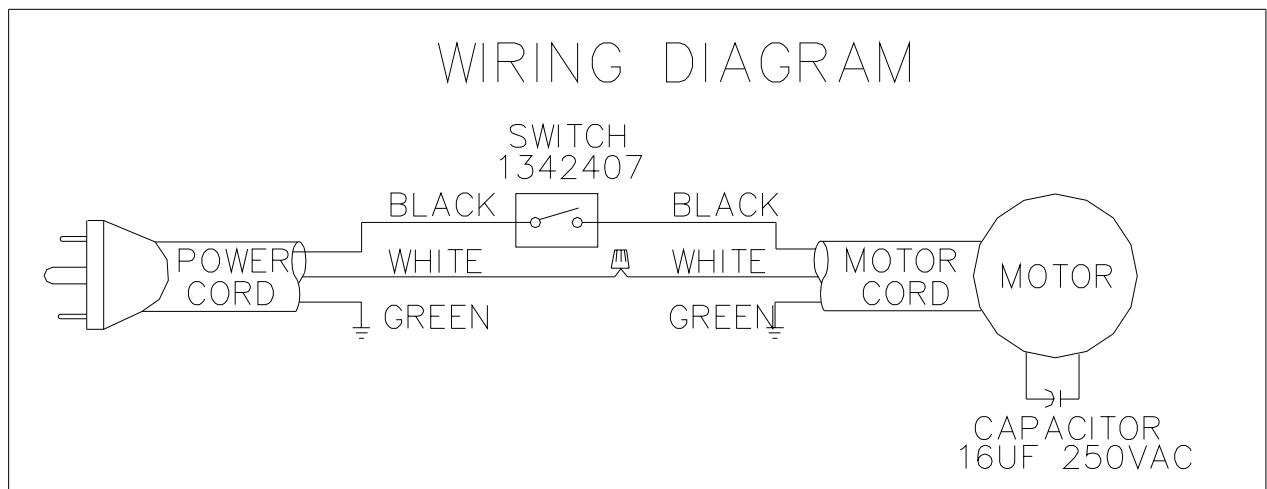
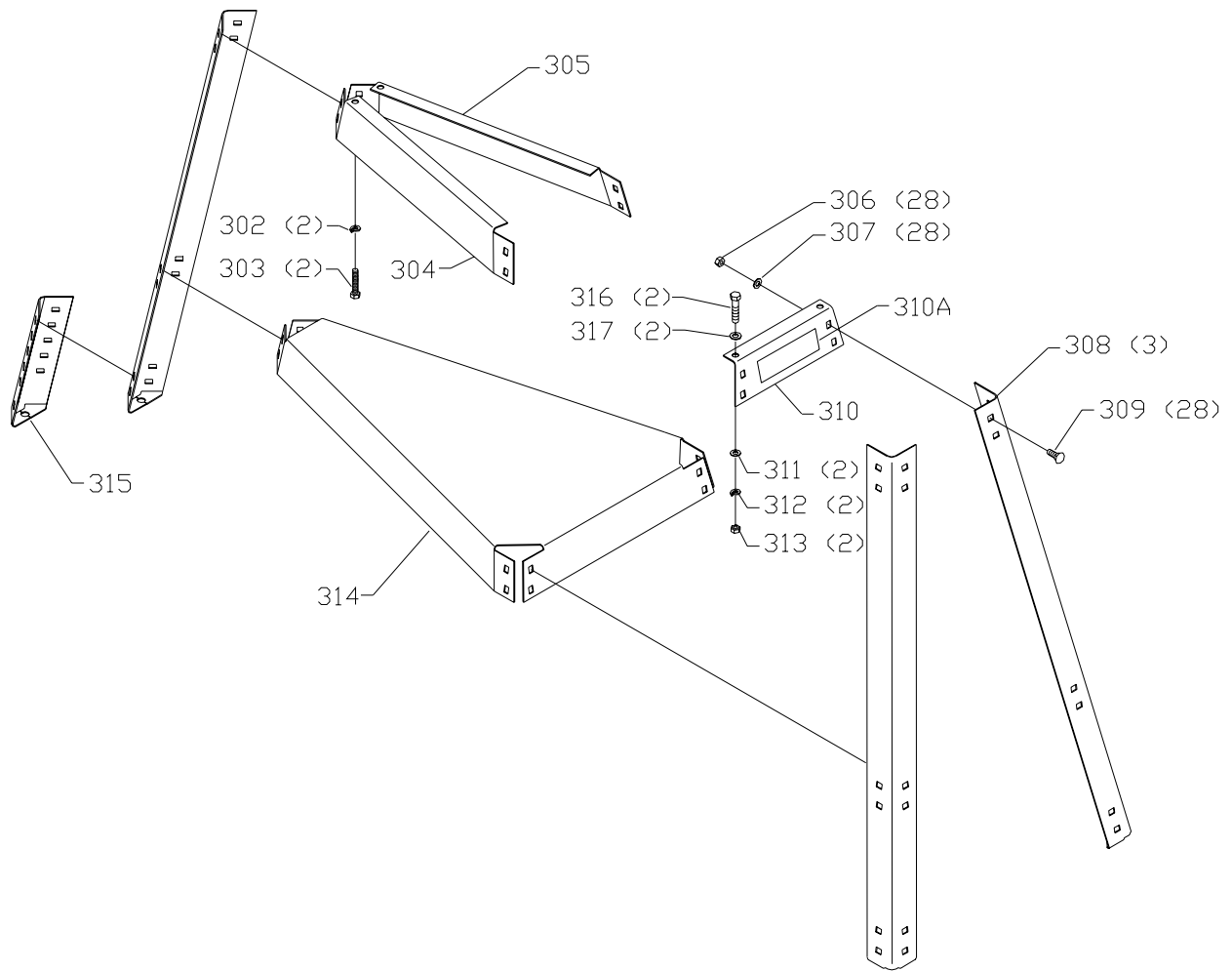
\* NOT SHOWN ASSEMBLED

**NOTE A:** WHEN SERVICING, USE THREAD RETAINING COMPOUND PRIOR TO INSTALLATION.



# REPLACEMENT PARTS

<u>Ref.</u>			<u>Ref.</u>		
<u>No.</u>	<u>Part No.</u>	<u>Description</u>	<u>No.</u>	<u>Part No.</u>	<u>Description</u>
201	1349899	TABLE INSERT	251	1346069	KEY
201A	1347377	ZERO CLEARANCE TABLE INSERT	252	1246195	INT RET RING
202	1342255	TABLE	253	422-31-139-0002	BALL BEARING
203	902-01-120-1034	1/4-20 HEX NUT	254	1342292	TOP COVER, INCL:
204	901-04-191-9274	1/4-20 X 5/8" HEX SOC SET SCREW	254A	1346086	SPEED CHART
205	1347345	TRUNNION	254B	1246164	M4.2 X 13MM PAN HD SCREW
206	904-01-010-1603	1/4" FLAT WASHER	254C	1342393	LOCK CLIP
207	901-03-010-0229	1/4-20 X 1/2" HEX SOC HD SCREW	254D	1342394	KNOB
208	1347394	SPECIAL SCREW	256	1310065	KNOB
209	1341438	M6.4 WAVE WASHER	257	1342276	BEARING HOUSING
210	n 900227	M6.4 FLAT WASHER	258	1342307	SPRING WASHER
211	901-01-060-0626	1/4-20 X 3/4" HEX HD SCREW	259	400-08-139-0008	BALL BEARING
212	902-01-281-7295	1/4-20 HEX NUT	260	1342278	DRIVE PULLEY
213	1347395	BLOCK	261	1342267	SPACER
214	901-03-010-3345	1/4-20 X 1" HEX SOC HD SCREW	262	1345382	M8 LOCK NUT
215	904-02-020-1702	1/4" LOCK WASHER	263	1342264	DRIVE BELT
216	904-01-010-1603	1/4" FLAT WASHER	264	901-04-150-0232	1/4-20 X 3/8" HEX SOC SET SCR (NOTE A)
217	1246093	M8 X 35MM HEX HD SCREW	265	1342279	MOTOR PULLEY
218	1347392	SUPPORT	266	1342288	MOTOR ASSY, INCL:
219	1347393	GLIDE	**	1341570	STRAIN RELIEF (QTY 2)
220	901-03-010-3331	10-24 X 3/4" HEX SOC HD SCR (NOTE A)	**	1342252	CAPACITOR 16UF 250V
221	1347327	POINTER	266A	1342251	COVER
222	901-02-010-0567	6-32 X 1/4" ROUND HD SCREW	266B	1310159	M4 X 6MM PAN HD SCREW
223	1346819	M8.5 FLAT WASHER	267	904-01-021-3590	1/4" WASHER
224	1347370	HANDLE ASSY	268	901-01-060-0623	1/4-20 X 1" HEX HD SCREW
230	1342265	BASE COVER	269	901-01-060-0649	5/16-18 X 1" HEX HD SCREW
231	1342303	FOAM TAPE	270	904-02-010-1703	5/16" LOCK WASHER
232	901-02-010-0576	8-32 X 5/8" ROUND HD SCREW	271	904-01-010-1604	5/16" FLAT WASHER
233	904-01-010-1602	3/16" FLAT WASHER	272	1342273	FOOT
234	1342275	DUST CHUTE	273	904-01-010-1604	5/16" FLAT WASHER
235	1347335	BELLOWS	274	901-01-060-0609	5/16-18 X 1 1/2" HEX HD SCREW
236	1347334	VALVE	275	904-01-021-3590	1/4" WASHER
237	1347341	BELLOWS CUP	276	904-03-013-1492	1/4" LOCK WASHER
238	1342257	BASE	277	902-01-120-1034	1/4-20 HEX NUT
239	1343050	1/2" CABLE CLAMP	280	901-02-010-0561	#10-32 X 3/8" ROUND HD SCREW
240	901-06-121-7383	10-24 X 3/8" PAN HD SCREW	281	904-01-010-1609	FLAT WASHER
241	1347342	PUSH NUT	283	1343140	(DIN 7981B) M5.5 12MM PAN HD SCREW
242	1246104	M6 X 25MM HEX SOC HD SCREW	284	1342293	BOTTOM COVER
243	1243520	M6.1 LOCK WASHER	286	1347347	AIR TUBE
244	1246140	M6.4 FLAT WASHER	288	901-02-010-7747	#04-40 X 3/8" ROUND HD SCREW
245	1347399	GUARD	289	1342392	CABLE ASSY
250	1342277	JACKSHAFT	290	904-01-031-2912	FLAT WASHER
			291	902-01-120-5432	#04-40 HEX NUT (SEE NOTE A)
			**	NOT SHOWN	



# REPLACEMENT PARTS

<u>Ref.</u>	<u>No.</u>	<u>Part No.</u>	<u>Description</u>
*		1342244	STAND ASSY, INCL.:
302		904-02-010-1703	5/16" LOCK WASHER
303		901-01-060-0606	5/16-18 X 5/8" HEX HD SCREW
304		1347332	TIE BAR RH
305		1347331	TIE BAR LH
306		1243398	(DIN 934) M8 HEX NUT
307		904-01-010-1605	3/8" FLAT WASHER
308		1347338	LEG
309		1349177	M8 X 16MM CARRIAGE HD SCREW
310		1347333	TIE BAR FRONT, INCL.:
310A		1346089	LABEL
311		904-01-010-1604	5/16" FLAT WASHER
312		904-02-010-1703	5/16" LOCK WASHER
313		902-01-010-1300	5/16-18 HEX NUT
314		1347383	STAND SHELF
315		1347351	LEG EXTENSION
316		901-01-060-0609	5/16-18 X 1 1/2" HEX HD SCREW
317		904-01-010-1604	5/16" FLAT WASHER
*			NOT SHOWN ASSEMBLED

---

## STANDARD SAFETY EQUIPMENT

In order to promote tool safety, Delta Machinery strictly enforces the policy of repairing or replacing any damaged or missing standard safety equipment on machines presented to Delta Authorized Service Centers for service/repairs. Any product that is presented to a Delta Authorized Service Centers for repairs which contains missing or damaged standard safety equipment will have that equipment repaired or replaced and the customer will be charged for any such service/repairs. Customers can avoid such charges only if the missing safety component is supplied to the service center at the time of repair.

*This parts list is provided to aid in obtaining service parts. Copies of the instruction and maintenance literature can be obtained through the Delta Technical Publications Department or through your service outlet.*