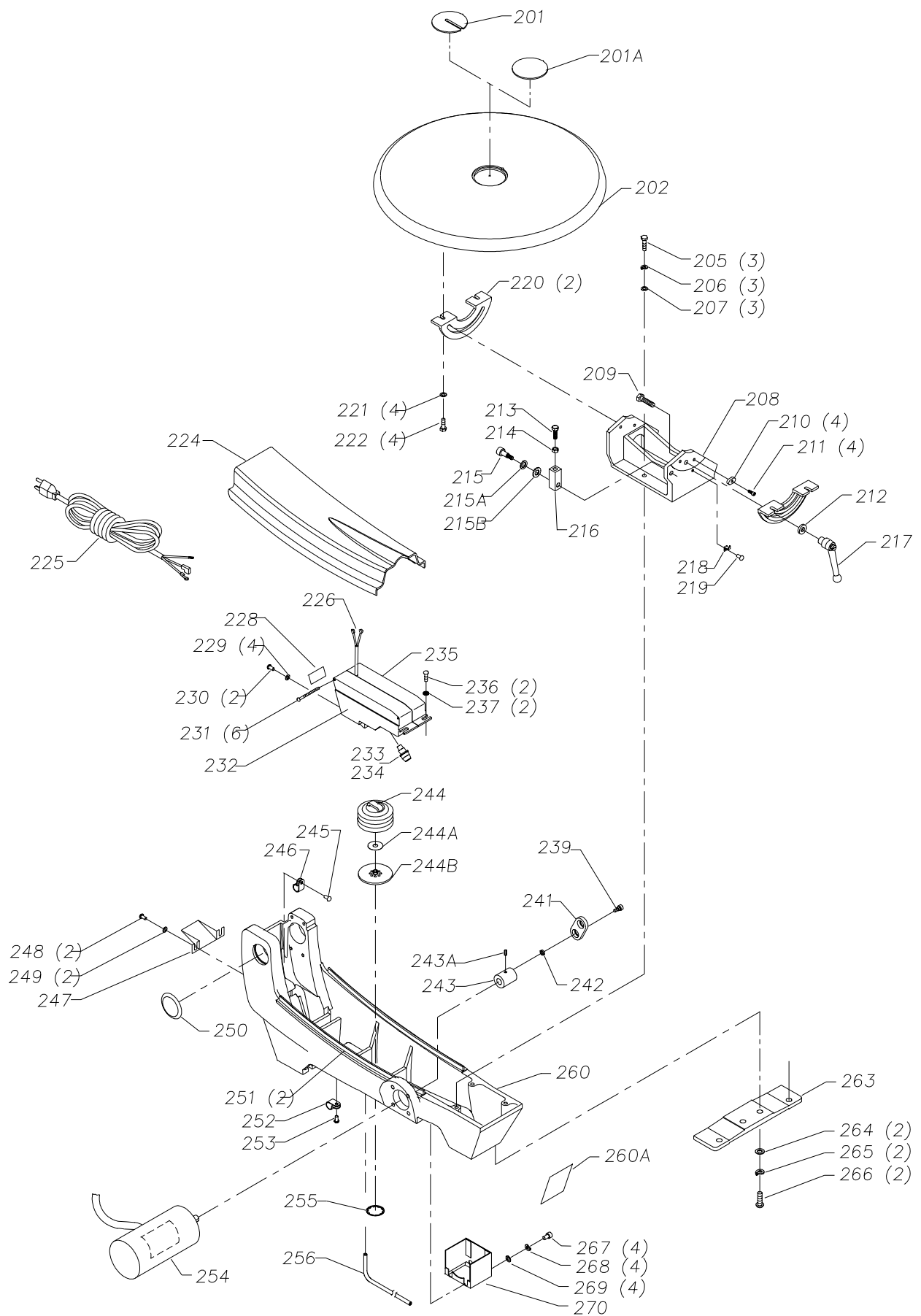


REPLACEMENT PARTS

Ref.			Ref.		
<u>No.</u>	<u>Part No.</u>	<u>Description</u>	<u>No.</u>	<u>Part No.</u>	<u>Description</u>
1	901-03-010-0222	1/4-20 X 5/8" HEX SOC HD SCREW	68	1342249	TENSION LEVER
2	904-03-030-1757	1/4" EXT TOOTH WASHER	68A	1340302	SPECIAL WASHER (CMO)
3	1347426	NAMEPLATE	68B	1340303	SPRING (CMO)
4	1347356	CONTROL ARM	68C	1347375	O-RING (CMO, SEE NOTE C)
5	1347525	RATCHET HANDLE	69	1342253	PIVOT PIN
6	1347371	KNOB	70	1342245	LINK
7	1349840	FELT WASHER	71	1342256	SPACER
8	1349971	WASHER	* n	40-251	QUICK SET BLADE CHUCK, CONST OF:
9	1347423	LABEL	72	1346122	SPRING
10	1347348	AIR NOZZLE	73	1347101	SPRING
11	902-02-040-1306	1/4-20 SQUARE NUT	74	1347374	SPECIAL NUT
12	1347404	JAM NUT	75	1346123	BUSHING
13	1349970	BUSHING	76	1346121	PAD
14	1347378	HOLD DOWN ROD	77	1346124	CAM
15	1347328	HOLD DOWN FOOT	78	1346120	BLADE CLAMP
16	904-01-010-1603	1/4" FLAT WASHER	79	1347103	(DIN 933) M4 X 18MM HEX HD SCREW
17	904-02-020-1702	1/4" LOCK WASHER	80	1347390	SPECIAL NUT
18	901-03-010-0229	1/4-20 X 1/2" HEX SOC HD SCREW	81	1347372	COLLAR
24	1347403	SPEED SWITCH ASSY	82	901-03-010-8073	#10-32 X 7/8" HEX SOC HD SCREW
28	1342407	SWITCH	83	1347358	DRIVE COLLAR
29	1348658	CONTROL BOX	84	1347390	SPECIAL NUT
30	901-02-030-0467	#06-32 X 3/8" FLAT HD SCREW	85	1347390	SPECIAL NUT
31	902-01-120-1204	#08-32 HEX NUT	86	901-03-010-8073	#10-32 X 7/8" HEX SOC HD SCREW
32	1343050	1/2" CABLE CLAMP	87	1347408	SHOULDER BOLT
33	1347357	FACEPLATE	88	1347409	WASHER
34	901-06-130-3003	#06-32 X 3/8" FLAT HD SCREW	* n	40-251	QUICK SET BLADE CHUCK, CONST OF:
35	904-02-010-1726	LOCK WASHER	91	1347103	(DIN 933) M4 X 18MM HEX HD SCREW
36	901-02-010-0554	#08-32 X 1/2" ROUND HD SCREW	92	1346120	BLADE CLAMP
40	1347397	WAVE WASHER	93	1346124	CAM
41	920-44-053-1681	BEARING	94	1347101	SPRING
42	1349834	ARM	95	1346122	SPRING
43	901-03-010-3360	8-32 X 1/2" HEX SOC HD SCR (SEE NOTE B)	96	1346121	PAD
44	1349835	BEARING SHAFT	97	1346123	BUSHING
45	1347376	WASHER	98	1347374	SPECIAL NUT
46	920-44-053-1681	BEARING	99	1347380	EXT RET RING
47	1347396	EXT RET RING	100	1347401	SPRING
60	1342254	#04-40 X 1 1/16" HEX SOC HD SCREW	102	1347384	CHUCK PIN (SEE NOTE B)
60A	1340311	FLAT WASHER	103	1347355	LOWER HOLDER
61	1342242	COVER	104	1347512	6-32 X 3/8" SET SCREW (SEE NOTE B)
62	1342241	SUPPORT	110	OPTIONAL	BLADE
63	902-01-120-5432	#04-40 HEX NUT	112	432-07-101-0004	5MM HEX WRENCH
64	1342308	SPRING			
65	1330670	EXT RET RING			
66	1344032	EXT RET RING			
67	1342246	SHAFT			
			*		NOT SHOWN ASSEMBLED
					EMO= EARLY MODELS ONLY
					CMO=CURRENT MODELS ONLY

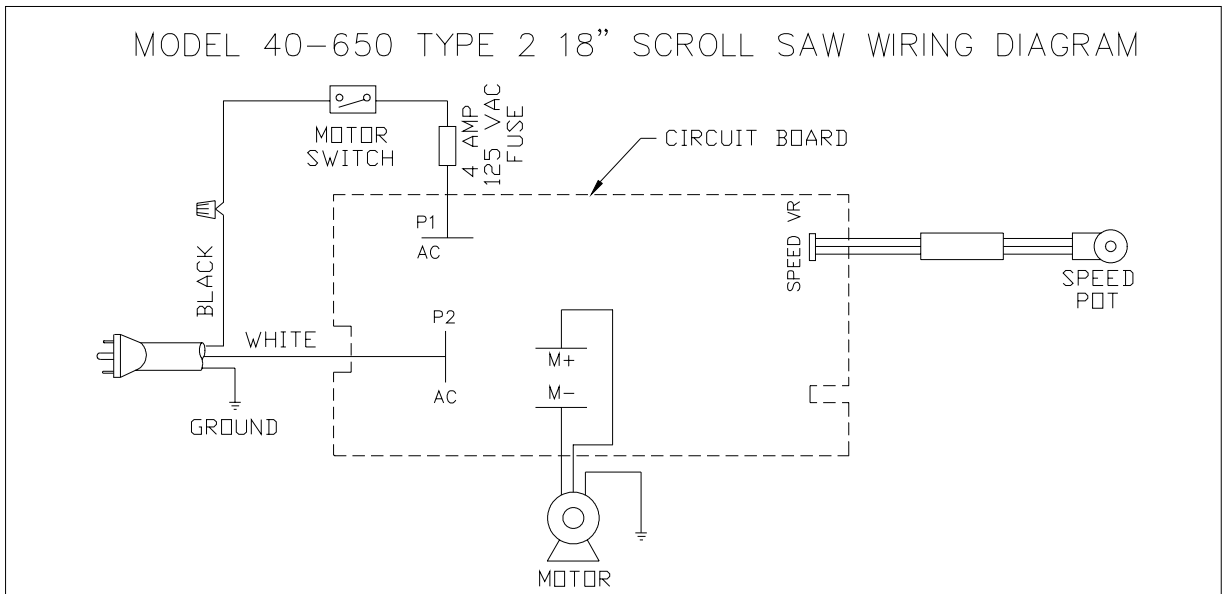
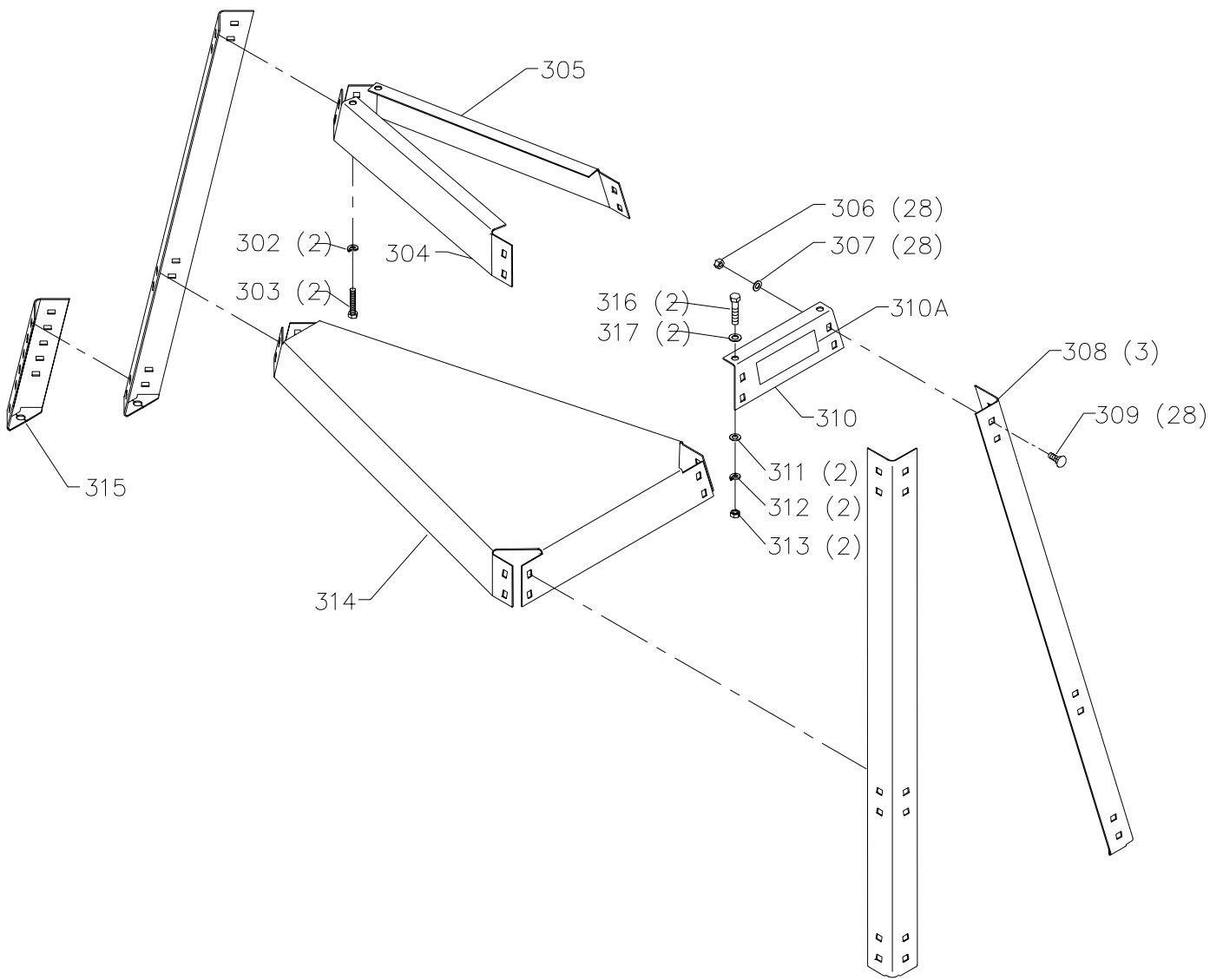
NOTES:

- A) INCLUDED WITH (REF. 24)
- B) WHEN SERVICING, USE THREAD RETAINING COMPOUND PRIOR TO INSTALLATION.
- C) WHEN REPLACING O-RING (REF. NO. 68C), ORDER BOTH SPECIAL WASHER (REF. NO. 68A) AND SPRING (REF. NO. 68B).



REPLACEMENT PARTS

Ref.			Ref.		
<u>No.</u>	<u>Part No.</u>	<u>Description</u>	<u>No.</u>	<u>Part No.</u>	<u>Description</u>
201	1349899	TABLE INSERT	242	1349948	SPACER
201A	1347377	ZERO CLEARANCE TABLE INSERT	243A	901-04-150-9239	1/4-20 X 1/4" SET SCREW (SEE NOTE B)
202	1347344	TABLE	243	1349992	DRIVE SHAFT, INCL:
205	901-03-010-3345	1/4-20 X 1" HEX SOC HD SCREW	244	1347335	BELLOWS
206	904-02-020-1702	1/4" LOCK WASHER	244A	1347334	VALVE
207	904-01-010-1603	1/4" FLAT WASHER	244B	1347341	BELLOWS CUP
208	1347392	SUPPORT, INCL:	245	901-02-010-0593	#10-24 X 3/8" ROUND HD SCREW
209	1246093	(DIN 933) M8 X 35MM HEX HD SCREW	246	1343050	1/2" CABLE CLAMP
210	1347393	GLIDE	247	1347524	GROUND SHIELD
211	901-03-010-3331	#10-24 X 3/4" SOC HD SCR (SEE NOTE B)	248	901-02-010-0525	#10-24 X 1/2" ROUND HD SCREW
212	1346819	M8.5 FLAT WASHER	249	904-01-010-1602	3/16" FLAT WASHER
213	901-01-060-0603	1/4-20 X 7/8" HEX HD SCREW	250	1347340	HOLE PLUG
214	902-01-281-7295	1/4-20 HEX NUT	251	1347398	FOAM TAPE
215	1347394	SPECIAL SCREW (SEE NOTE B)	252	1343050	1/2" CABLE CLAMP
215A	1341438	(DIN 137B) M6.4 WAVE WASHER	253	901-02-010-0593	#10-24 X 3/8" ROUND HD SCREW
215B	1340654	(DIN 9021) M6.4 FLAT WASHER	254	1348672	MOTOR, INCL:
216	1347395	BLOCK	**	1349920	BRUSH
217	1347370	HANDLE ASSY	**	1349919	BRUSH CAP
218	1347327	POINTER	**	1349918	BRUSH HOLDER
219	901-02-010-0567	#06-32 X 1/4" ROUND HD SCREW	255	1347342	PUSH NUT
220	1347345	TRUNNION	256	1347347	AIR TUBE
221	904-01-010-1603	1/4" FLAT WASHER	260A	1347425	WARNING LABEL
222	1347410	1/4-20 X 3/8" BUTTON HD SCREW	260	1347330	BASE, INCL:
224	1347361	BASE COVER	263	1347336	FOOT
225	1347419	POWER CABLE	264	n 904-01-033-1451	FLAT WASHER
*	1348671	CONTROLLER ASSY, CONST OF:	265	904-02-010-1703	5/16" LOCK WASHER
226	1347521	POWER SWITCH CORD	266	901-01-060-0649	5/16-18 X 1" HEX HD SCREW
228	1347422	LABEL	267	1243336	M6 X 20MM SOC HD SCR(SEE NOTE B)
229	904-03-030-1795	3/16" EXT TOOTH WASHER	268	1243520	(DIN 7980) M6.1 LOCK WASHER
230	901-02-010-0525	#10-24 X 1/2" ROUND HD SCREW	269	1246140	(DIN 125) M6.4 FLAT WASHER
231	1344952	(DIN 7981B) M4.2 X 16MM PAN HD SCREW	270	1347399	GUARD
232	1347416	BOX (LH)			
233	1347417	FUSE	*	NOT SHOWN ASSEMBLED	
234	1347418	FUSE HOUSING	**	NOT SHOWN	
235	1347415	BOX (RH)			
236	901-02-010-0525	#10-24 X 1/2" ROUND HD SCREW			
237	904-01-010-1602	3/16" FLAT WASHER			
239	1349947	SHOULDER BOLT (SEE NOTE B)			
241	n 900362	DRIVE LINK ASSY			



REPLACEMENT PARTS

Ref.

<u>No.</u>	<u>Part No.</u>	<u>Description</u>
*	1342244	STAND ASSY, CONST OF:
302	904-02-010-1703	5/16" LOCK WASHER
303	901-01-060-0606	5/16-18 X 5/8" HEX HD SCREW
304	1347332	TIE BAR (LH)
305	1347331	TIE BAR (RH)
306	1243398	(DIN 934) M8 HEX NUT
307	904-01-010-1605	3/8" FLAT WASHER
308	1347338	LEG
309	1349177	(DIN 603) M8 X 16MM CARRIAGE HD SCREW
310	1347333	TIE BAR, FRONT, INCL:
310A	1346089	LABEL
311 n	904-01-033-1451	FLAT WASHER
312	904-02-010-1703	5/16" LOCK WASHER
313	902-01-010-1300	5/16-18 HEX NUT
314	1347383	STAND SHELF
315	1347351	LEG EXTENSION
316	901-01-060-0609	5/16-18 X 1 1/2" HEX HD SCREW
317	904-01-010-1604	5/16" FLAT WASHER
*		NOT SHOWN ASSEMBLED

STANDARD SAFETY EQUIPMENT

In order to promote tool safety, Delta Machinery strictly enforces the policy of repairing or replacing any damaged or missing standard safety equipment on machines presented to Delta Authorized Service Centers for service/repairs. Any product which is presented to a Delta Authorized Service Centers for repairs which contains missing or damaged standard safety equipment will have that equipment repaired or replaced and the customer will be charged for any such service/repairs. Customers can avoid such charges only if the missing safety component is supplied to the service center at the time of repair.

This parts list is provided to aid in obtaining service parts. Copies of the instruction and maintenance literature can be obtained through the Delta Technical Publications Department or through your service outlet.