

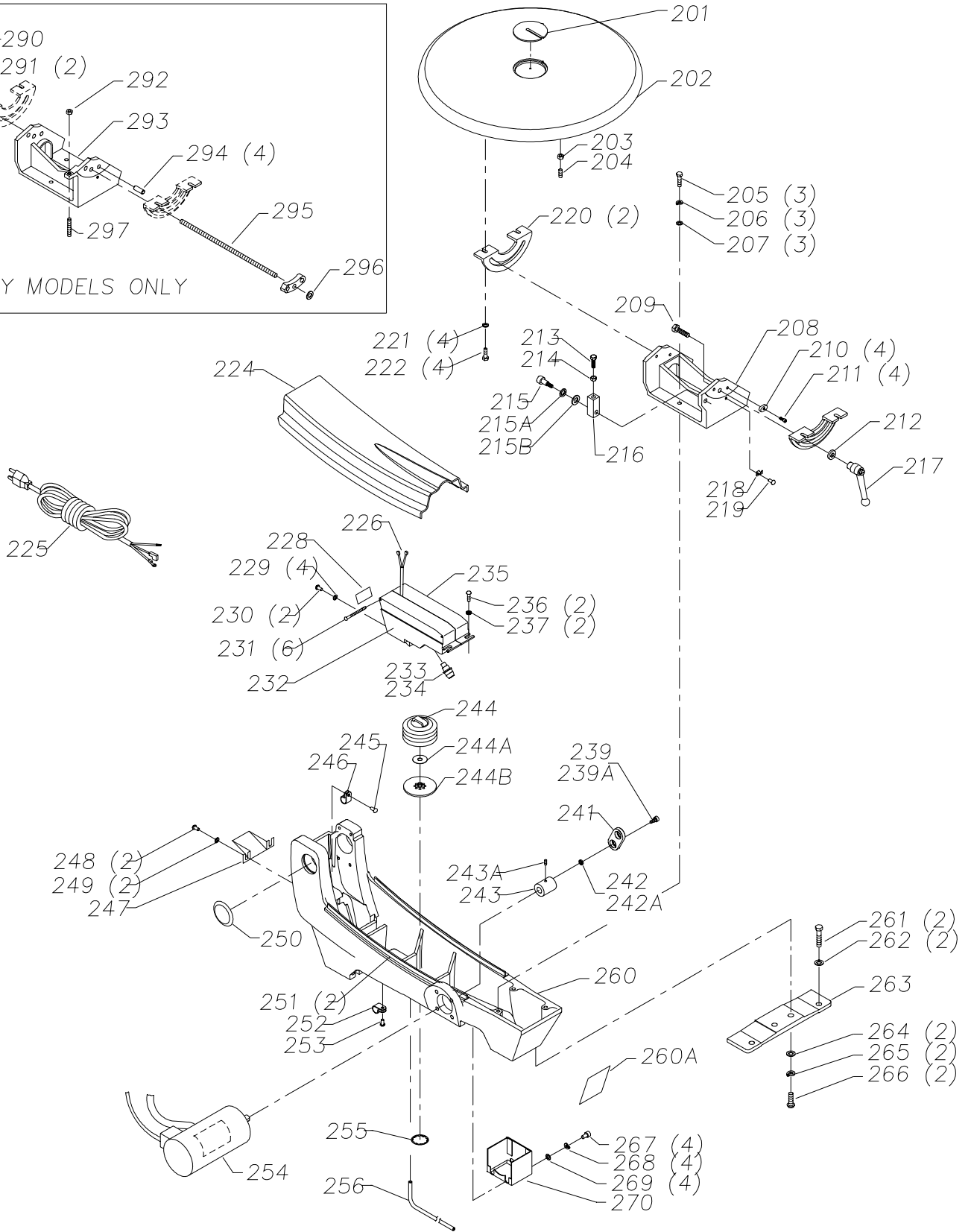
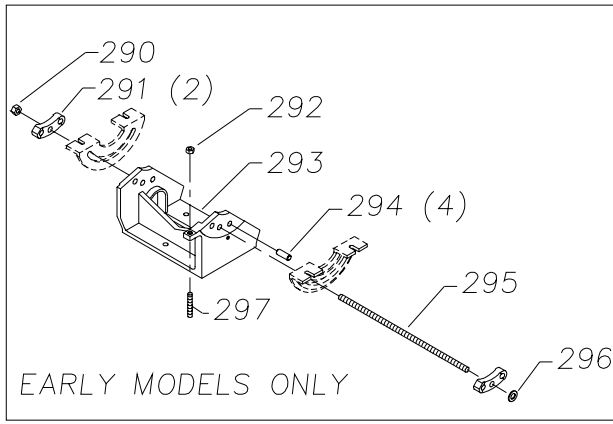
REPLACEMENT PARTS

Ref.

<u>No.</u>	<u>Part No.</u>	<u>Description</u>
1	901-03-010-0222	1/4-20 X 5/8" HEX SOC HD SCREW
2	904-03-030-1757	1/4" EXT TOOTH WASHER
3	1347426	NAMEPLATE
4	1347356	CONTROL ARM
5	1347525	RATCHET HANDLE
6	1347371	KNOB
7	1349840	FELT WASHER
8	1349971	WASHER
9	1347423	LABEL
10	1347348	AIR NOZZLE
11	902-02-040-1306	1/4-20 SQUARE NUT
12	1347404	JAM NUT
13	1349970	BUSHING
14	1347378	HOLD DOWN ROD
15	1347328	HOLD DOWN FOOT
16	904-01-010-1603	1/4" FLAT WASHER
17	904-02-020-1702	1/4" LOCK WASHER
18	901-03-010-0229	1/4-20 X 1/2" HEX SOC HD SCREW
24	1347403	SPEED SWITCH ASSY (SEE NOTE A)
29	1349993	CONTROL BOX
30	901-02-030-0467	#06-32 X 3/8" FLAT HD SCREW
31	902-01-120-1204	#08-32 HEX NUT
32	1343050	1/2" CABLE CLAMP
33	1347357	FACEPLATE
34	901-06-130-3003	#06-32 X 3/8" FLAT HD SCREW
35	904-02-010-1726	LOCK WASHER
36	901-02-010-0554	#08-32 X 1/2" ROUND HD SCREW
40	1347397	WAVE WASHER
41	920-44-053-1681	BEARING
42	1347362	ARM (EMO SEE NOTE B)
42A	1349834	ARM (CMO SEE NOTE B)
43	901-03-010-3322	#10-24 X 1/2" HEX SOC HD SCR(EMONOTEB&C)
43A	901-03-010-3360	#08-32 X 1/2" HEX SOC HD SCR(CMONOTEB&C)
44	1347382	BEARING SHAFT (EMO SEE NOTE B)
44A	1349835	BEARING SHAFT (CMO SEE NOTE B)
45	1347376	WASHER
46	920-44-053-1681	BEARING
47	1347396	EXT RET RING
60	1347406	#6-32 X 3/8" HEX SOC SET SCR (SEE NOTEC)
61	1347379	PIVOT SCREW (SEE NOTE C)
62	1347354	UPPER HOLDER (SEE NOTE F)
63	1347385	BUMPER
64	1347373	DETENT SPRING
65	1347369	TENSION LEVER (SEE NOTE F)
*	1349994	UPPER CHUCK, CONST OF: (SEE NOTE F)
66	1347389	BOLT
67	902-01-120-1216	#10-24 HEX NUT
68	1347391	SPRING

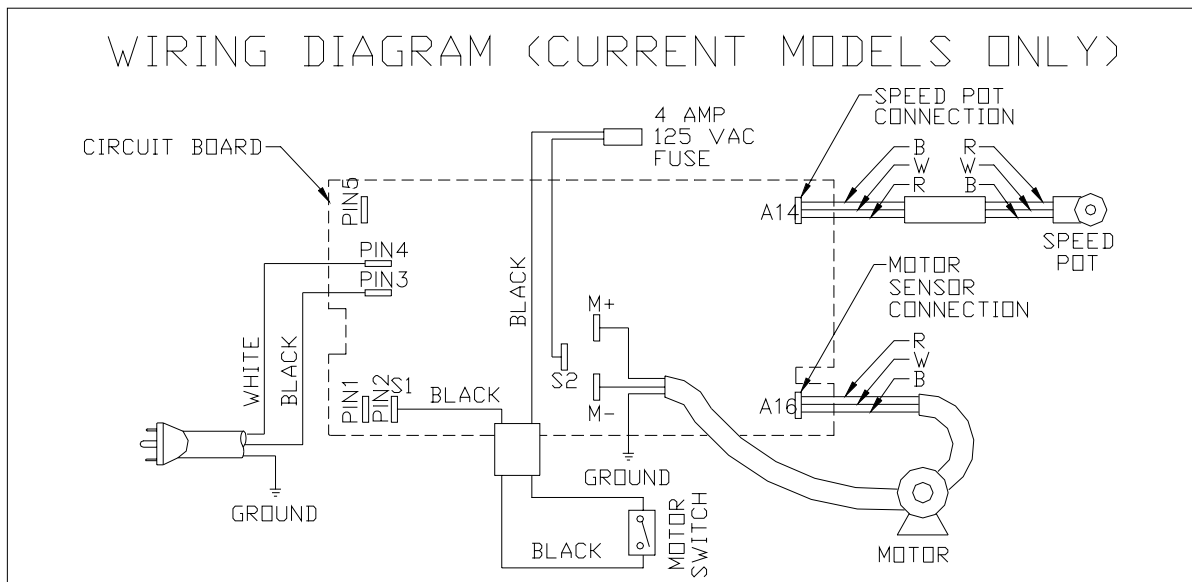
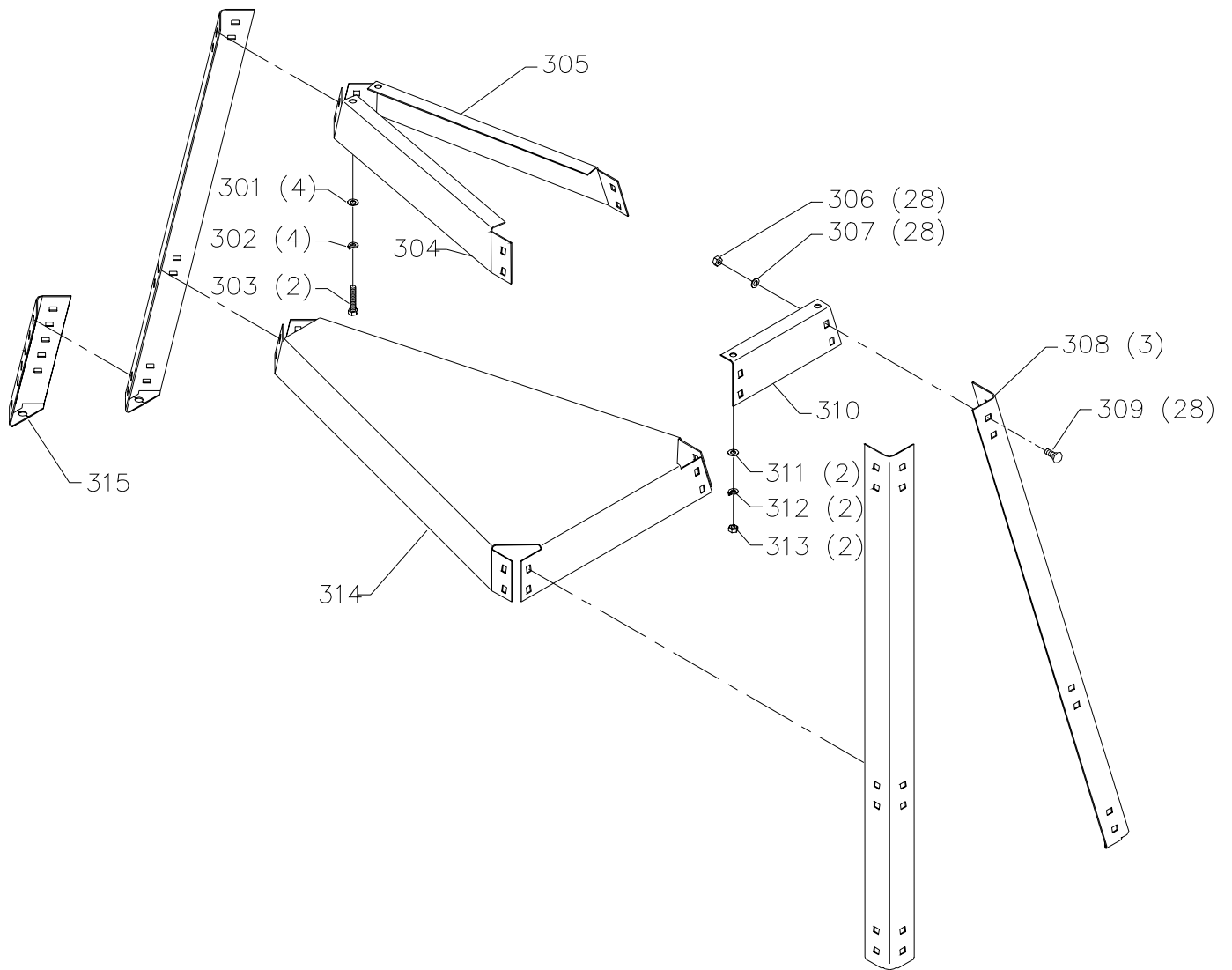
Ref.

<u>No.</u>	<u>Part No.</u>	<u>Description</u>
69	1347101	SPRING
70	1346122	SPRING
71	1346119	(DIN 985) M4 LOCK NUT
72	1346123	BUSHING
73	1346121	PAD
74	1346124	CAM
75	1347511	#8-32 X 3/8" NYLOK HEX SOC SET SCREW
76	1347368	BLADE CLAMP
77	1347103	(DIN 933) M4 X 16MM HEX HD SCREW
80	1347390	SPECIAL NUT
81	1347372	COLLAR
82	901-03-010-8073	#10-32 X 7/8" HEX SOC HD SCREW
83	1347358	DRIVE COLLAR
84	1347390	SPECIAL NUT
85	1347390	SPECIAL NUT
86	901-03-010-8073	#10-32 X 7/8" HEX SOC HD SCREW
87	1347408	SHOULDER BOLT
88	1347409	WASHER
*	40-250	QUICK SET BLADE CHUCK, CONST OF:
91	1347103	(DIN 933) M4 X 16MM HEX HD SCREW
92	1346120	BLADE CLAMP
93	1346124	CAM
94	1347101	SPRING
95	1346122	SPRING
96	1346121	PAD
97	1346123	BUSHING
98	1346119	(DIN 985) M4 LOCK NUT
99	1347380	EXT RET RING
100	1347401	SPRING
102	1347384	CHUCK PIN (SEE NOTE C)
103	1347355	LOWER HOLDER
104	1347512	#6-32 X 3/8" NYLOK HX SOC SET SCR(NOTE C)
110	OPTIONAL	BLADE
111	1347102	WRENCH
112	432-07-101-0004	5MM HEX WRENCH
120	1347421	BULB WARNING LABEL (EMO)
121	1347366	LIGHT ASSY (EMO)
122	1347337	BULB (EMO)
123	438-01-007-0042	WIRE NUT (EMO)
124	1340490	(DIN 84) M4 X 8MM CHEESE HD SCREW (EMO)
125	904-03-030-1795	3/16" EXT TOOTH WASHER (EMO)
126	1347360	CONTROL BOX (EMO)
127	1347509	SWITCH (RED, EMO)
128	1347329	SWITCH (WHITE, EMO)
*		NOT SHOWN ASSEMBLED
		EMO= EARLY MODELS ONLY
		CMO=CURRENT MODELS ONLY



REPLACEMENT PARTS

Ref.	No.	Part No.	Description	Ref.	No.	Part No.	Description
	201	1349899	TABLE INSERT		244A	1347334	VALVE
	202	1347344	TABLE		244B	1347341	BELLOWS CUP
	203	902-01-120-1034	1/4-20 HEX NUT		245	901-02-010-0593	#10-24 X 3/8" ROUND HD SCREW
	204	901-04-191-9274	1/4-20 X 5/8" NYLOK HEX SOC SET SCREW		246	1343050	1/2" CABLE CLAMP
	205	901-03-010-3345	1/4-20 X 1" HEX SOC HD SCREW		247	1347524	GROUND SHIELD
	206	904-02-020-1702	1/4" LOCK WASHER		248	901-02-010-0525	#10-24 X 1/2" ROUND HD SCREW
	207	904-01-010-1603	1/4" FLAT WASHER		249	904-01-010-1602	3/16" FLAT WASHER
	208	1347392	SUPPORT, INCL:		250	1347340	HOLE PLUG
	209	1246093	(DIN 933) M8 X 35MM HEX HD SCREW		251	1347398	FOAM TAPE
	210	1347393	GLIDE		252	1343050	1/2" CABLE CLAMP
	211	901-03-010-3331	#10-24 X 3/4" HEX HD SCREW (SEENOTEC)		253	901-02-010-0593	#10-24 X 3/8" ROUND HD SCREW
	212	1346819	M8.5 FLAT WASHER		254	1347414	MOTOR, INCL:
	213	901-01-060-0603	1/4-20 X 7/8" HEX HD SCREW		254A n	1349920	BRUSH
	214	902-01-281-7295	1/4-20 HEX NUT		254B n	1349919	BRUSH CAP
	215	1347394	SPECIAL SCREW (SEE NOTE C)		254C n	1349918	BRUSH HOLDER
	215A	1341438	(DIN 137B) M6.4 WAVE WASHER		255	1347342	PUSH NUT
	215B	1340654	(DIN 9021) M6.4 FLAT WASHER		256	1347347	AIR TUBE
	216	1347395	BLOCK		260A	1347425	WARNING LABEL
	217	1340656	HANDLE		260	1347330	BASE
	218	1347327	POINTER		261	901-01-060-0609	5/16-18 X 1 1/2" HEX HD SCREW
	219	901-02-010-0567	#06-32 X 1/4" ROUND HD SCREW		262	904-01-010-1604	5/16" FLAT WASHER
	220	1347345	TRUNNION		263	1347336	FOOT
	221	904-01-010-1603	1/4" FLAT WASHER		264	904-01-031-6202	FLAT WASHER
	222	1347410	1/4-20 X 3/8" BUTTON HD SCREW		265	904-02-010-1703	5/16" LOCK WASHER
	224	1347361	BASE COVER		266	901-01-060-0649	5/16-18 X 1" HEX HD SCREW
	225	1347419	POWER CABLE		267	1243336	(DIN 912) M6 X 20MM HEX SOC HD SCR(NOTC)
	*	1347520	CONTROLLER ASSY, CONST OF:		268	1243520	(DIN 7980) M6.1 LOCK WASHER
	226	1347521	POWER SWITCH CORD		269	1246140	(DIN 125) M6.4 FLAT WASHER
	*	1347522	LIGHT SWITCH CORD (EMO)		270	1347399	GUARD
	228	1347422	LABEL		290	1243398	(DIN 934) M8 HEX NUT (EMO)
	229	904-03-030-1795	3/16" EXT TOOTH WASHER		291	1347400	CLAMP (EMO)
	230	901-02-010-0525	#10-24 X 1/2" ROUND HD SCREW		292	902-01-120-1034	1/4-20 HEX NUT (EMO)
	231	1344952	(DIN 7981B) M4.2 X 16MM PAN HD SCREW		293	1347343	SUPPORT (EMO)
	232	1347416	BOX (LH)		294	1347513	(DIN 7) M8 X 30MM DOWEL PIN (EMO)
	233	1347417	FUSE		295	1347381	BOLT (EMO)
	234	1347418	FUSE HOUSING		296	1340637	(DIN 9021) M8.4 FLAT WASHER (EMO)
	235	1347415	BOX (RH)		297	1347514	1/4-20 X 1-1/2" NYLOK HEXSOCSETSCR (EMO)
	236	901-02-010-0525	#10-24 X 1/2" ROUND HD SCREW		*		NOT SHOWN ASSEMBLED
	237	904-01-010-1602	3/16" FLAT WASHER		**		NOT SHOWN
	239	1347388	SHOULDER BOLT (EMO SEE C&D)				EMO= EARLY MODELS ONLY
	239A	1349947	SHOULDER BOLT (CMO SEE C&D)				CMO=CURRENT MODELS ONLY
	241	898444	DRIVE LINK ASSY				
	242A	1349948	SPACER (CMO SEE D)				
	242	1347346	SPACER (EMO SEE D)				
	243A	1349992	1/4-20 X 1/4" HEX SOC SET SCR(SEE NOTEC)				
	243	1349992	DRIVE SHAFT, INCL:				
	244	1347335	BELLOWS				



REPLACEMENT PARTS

Ref.

<u>No.</u>	<u>Part No.</u>	<u>Description</u>
301	904-01-031-6202	FLAT WASHER
302	904-02-010-1703	5/16" LOCK WASHER
303	901-01-060-0606	5/16-18 X 5/8" HEX HD SCREW
304	1347332	TIE BAR (LH)
305	1347331	TIE BAR (RH)
306	1243398	(DIN 934) M8 HEX NUT
307	904-01-010-1605	3/8" FLAT WASHER
308	1347338	LEG
309	1313325	(DIN 603) M8 X 20MM CARRIAGE HD SCREW
310	1347333	TIE BAR
311	904-01-031-6202	FLAT WASHER
312	904-02-010-1703	5/16" LOCK WASHER
313	902-01-010-1300	5/16-18 HEX NUT
314	1347383	STAND SHELF
315	1347351	LEG EXTENSION
**	1343580	SWITCH
**	1348658	CONTROL BOX (SEE NOTE E)
**	1342500	Q3 UPCHUCK RETRO KIT
**		NOT SHOWN

NOTES:

- A) INCLUDED WITH (REF. NO. 24)
- B) EARLY MODELS USED #10-24 X 1/2" HEX SOC HD SCREWS TO SECURE THE ARM TO THE BEARING SHAFT. CURRENT MODELS USE #8-32 X 1/2" HEX SOC HD SCREWS. EARLY AND CURRENT COMPONENTS ARE INTERCHANGEABLE IN SETS ONLY!
- C) WHEN SERVICING, USE THREAD RETAINING COMPOUND PRIOR TO INSTALLATION.
- D) EARLY MODELS USED SPACERS (REF. NO. 242) WITH .257" I. D. CURRENT MODELS SPACERS REF. NO. 242A) HAVE .200" I. D. EARLY AND CURRENT COMPONENTS ARE INTERCHANGEABLE IN SETS ONLY!
- E) WHEN REPLACING THE SWITCH ON LATER, SINGLE SWITCH (NO LIGHT) MODELS, ORDER (1) NEW STYLE DUST PROOF SWITCH, P/N 1343580 (*WITH 3/16" WIDE TERMINALS*) AND (1) MATCHING PLASTIC CONTROL BOX, P/N 1348658.
- F) A SERVICE RETROFIT KIT IS AVAILABLE TO CONVERT OLD STYLE Q3 UPPER CHUCK/ TENSION ASSEMBLIES TO THE CURRENT Q3 TYPE 2 STYLE. TO RETROFIT, ORDER P/N 1342500, UPPER CHUCK RETROFIT KIT. SEE FIELD SERVICE BULLETIN 055, DATED 6-24-99.

STANDARD SAFETY EQUIPMENT

In order to promote tool safety, Delta Machinery strictly enforces the policy of repairing or replacing any damaged or missing standard safety equipment on machines presented to Delta Authorized Service Centers for service/repairs. Any product which is presented to a Delta Authorized Service Centers for repairs which contains missing or damaged standard safety equipment will have that equipment repaired or replaced and the customer will be charged for any such service/repairs. Customers can avoid such charges only if the missing safety component is supplied to the service center at the time of repair.

This parts list is provided to aid in obtaining service parts. Copies of the instruction and maintenance literature can be obtained through the Delta Technical Publications Department or through your service outlet.