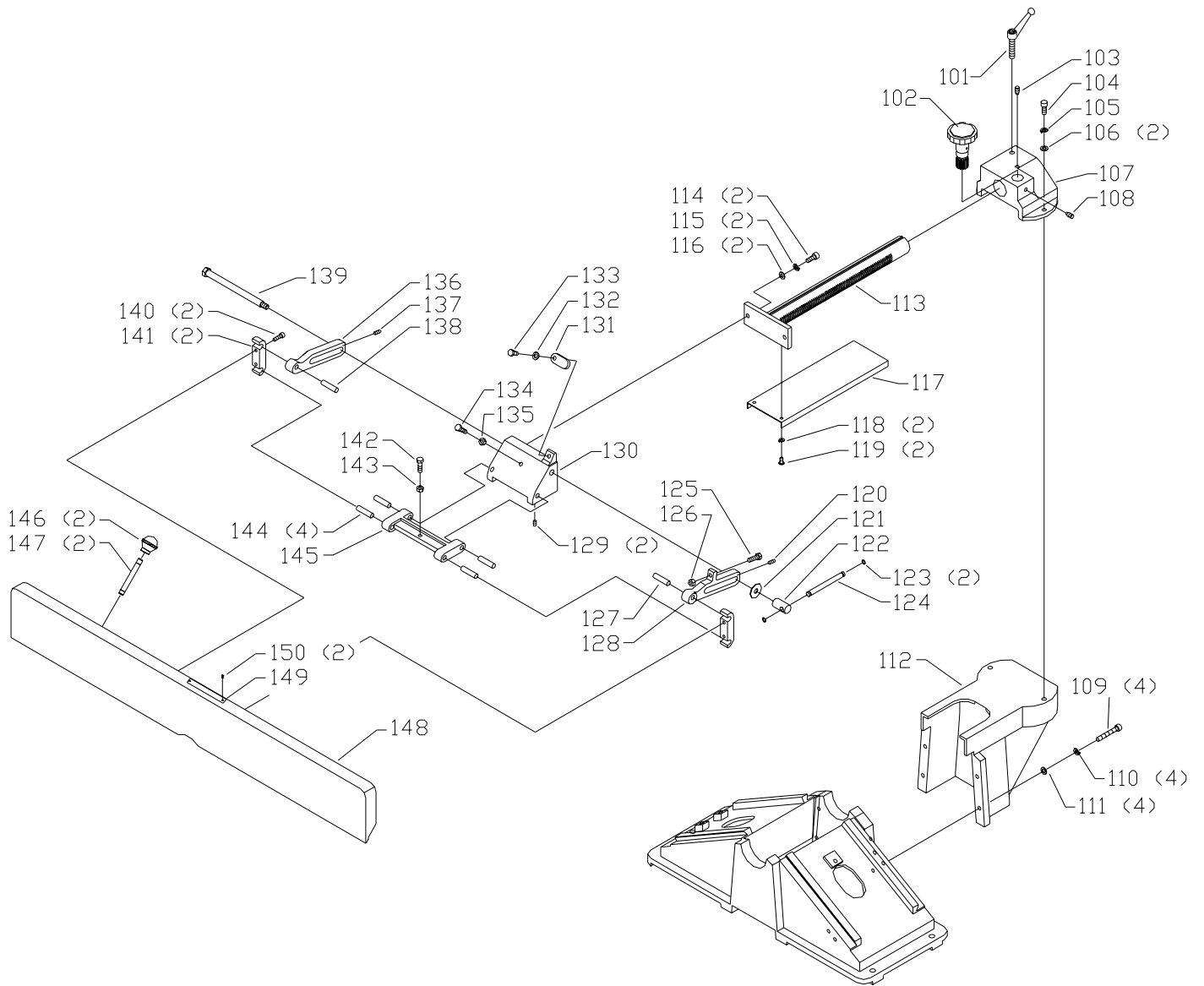


REPLACEMENT PARTS

Ref.			Ref.		
<u>No.</u>	<u>Part No.</u>	<u>Description</u>	<u>No.</u>	<u>Part No.</u>	<u>Description</u>
*	1345487	CUTTERHEAD ASSY, INCL:	43	1310155	M5 X 8MM CHEESE HD SCREW
1	1340196	KNIFE SCREW	44	1340132	PLATE
2	1345488	BAR	45	1340133	SPRING
3	37-355	KNIVES (SET OF 3)	46	1340134	CUP
4	1243321	M6 X 10MM HEX SOC SET SCREW	47	1340135	RETAINER
5	909575	PULLEY	48	1246047	M5 X 16MM CHEESE HD SCREW
6	909576	SUPPORT (RH), T2	49	1346095	SPACER
	902303	SUPPORT (RH), T1	50	1345508	HANDLE
7	1345491	STUD	51	1345509	LEVER ROD
8	1243360	M10.2 LOCK WASHER	52	1345510	KNOB
9	1243496	M10 HEX NUT	53	1345594	M14 HEX NUT
10	1320106	BALL BEARING	54	1340142	SPECIAL BOLT
11	1345595	KEY	55	1346093	ROD
12A	1330112	NUT	56	1346094	SHAFT
12B	1246008	M5 X 12MM HEX SOC SET SCREW	57	1246028	EXT RET RING
13	1345493	CUTTERHEAD	58	909580	BLOCK, T2
14	1086894	BALL BEARING		1345507	BLOCK, T1
15	909577	SUPPORT (LH), T2	59	1345506	LINK
	1340116	SUPPORT (LH), T1	60	1330670	EXT RET RING
16	1345859	M6 X 12MM BUTTON HD SCREW	61	1345504	BRACKET
17	1340622	M6.4 FLAT WASHER	62	1246157	M8.1 LOCK WASHER
18	1340122	KNOB	63	1246054	M8 X 20MM HEX SOC HD SCREW
19	1310055	M6 X 6MM HEX SOC SET SCREW	64	1345505	SHAFT
20	1340123	COLLAR	65	1346092	CONNECTOR
21	928-05-013-1378	WAVE WASHER	66	NOT AVAILABLE	BASE ASSY (NOTE A)
22	1347020	M11.5 FLAT WASHER	67	1345497	GIB
23	1345511	SHAFT	68	1246187	M6 X 25MM HEX SOC SET SCREW
24	1340124	BLOCK	69	1243456	M6 HEX NUT
25	1246157	M8.1 LOCK WASHER	70	1340120	LOCKSCREW
26	1243554	M8 X 35MM HEX SOC HD SCREW	71	1340118	STOP SCREW
27	1345502	GUARD, INCL:	72	1243398	M8 HEX NUT
28	1246008	M5 X 12MM HEX SOC SET SCREW	73	909578	BLOCK, T2
29	1346696	WARNING LABEL		1345495	BLOCK, T1
30	1345500	SPACER	74	1246150	M8 X 25MM HEX SOC SET SCREW
31	1345499	PLATE	75	1243398	M8 HEX NUT
32	1345500	SPACER	76	1246122	M8 X 16MM HEX SOC HD SCREW
33	1345501	POINTER	77	1345496	LEVER ASSY
34	1343545	M4.1 FLAT WASHER	80	37-108	JOINTER PUSH BLOCK
35	1246154	M4 X 16MM CHEESE HD SCREW	81	428-07-101-0002	6MM HEX WRENCH
36	1246053	M8 X 25MM HEX SOC HD SCREW	82	422-29-101-0002	4MM HEX WRENCH
37	909546	NAMEPLATE, T2	83	428-06-101-0002	3MM HEX WRENCH
	1346699	NAMEPLATE, T1	84	891903	2.5MM HEX WRENCH
38	1310016	5MM DRIVE SCREW	85	1343918	8 X 10 OPEN END WRENCH
39	1246110	M6 X 24MM SPRING PIN	86	909569	HARDWARE PACK
40	1345498	SCALE	*		NOT SHOWN ASSEMBLED
41	1346099	SCALE BRACKET			
42	1246102	M5.3 FLAT WASHER			

NOTE A: BASE, FRONT AND REAR TABLES CANNOT BE SUPPLIED BECAUSE THEY MUST BE MACHINED TOGETHER FOR ACCURACY AND TRUE ALIGNMENT MAKING THIS REPAIR COST PROHIBITIVE.



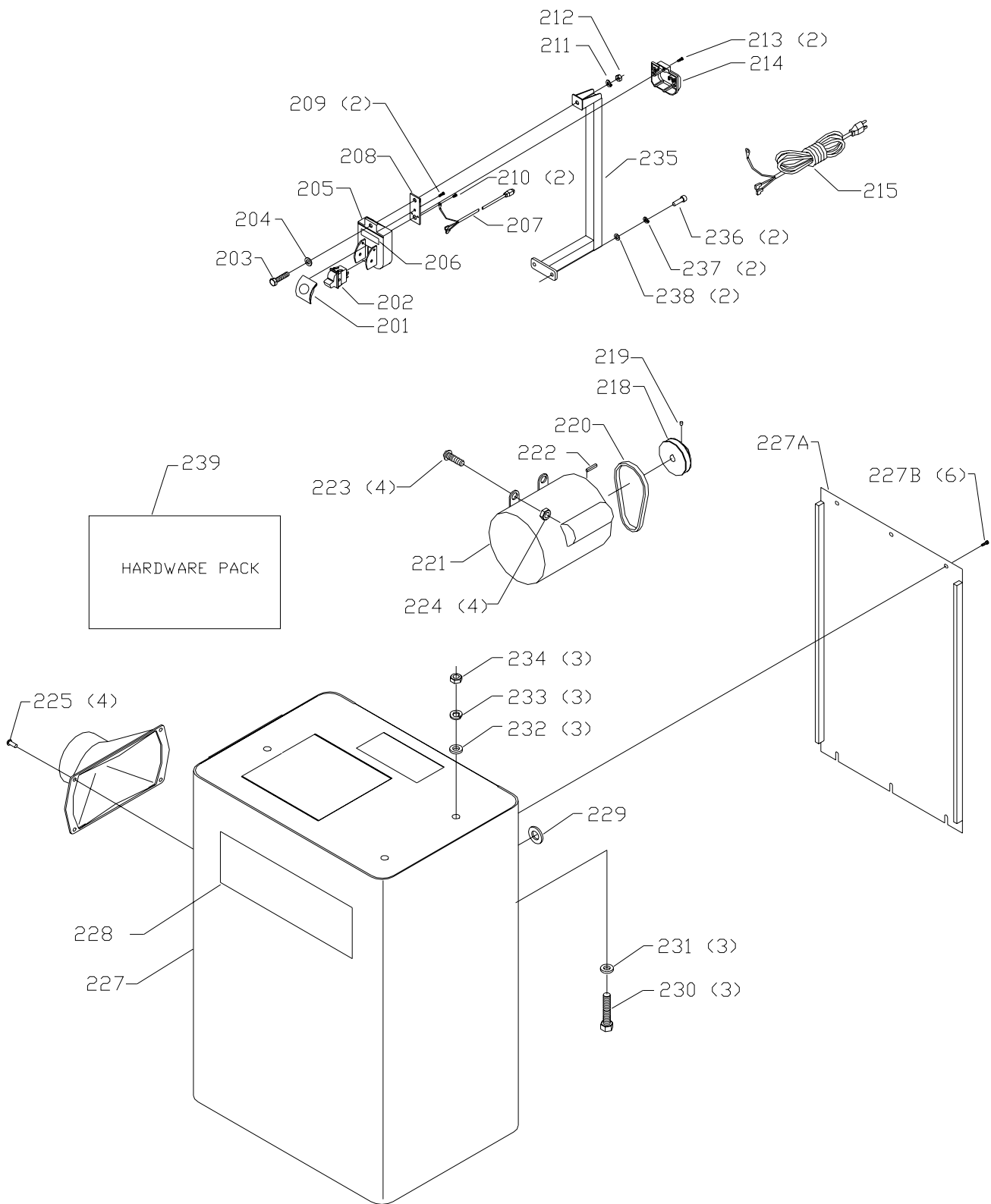
REPLACEMENT PARTS

Ref.

<u>No.</u>	<u>Part No.</u>	<u>Description</u>
101	1346747	LEVER ASSY
102	1346746	HANDWHEEL
103	1346744	SPECIAL SCREW
104	1246054	M8 X 20MM HEX SOC HD SCREW
105	1246157	M8.1 LOCK WASHER
106	1344330	M8 FLAT WASHER
107	909582	BRACKET, T2
	1346745	BRACKET, T1
108	1346744	SPECIAL SCREW
109	1340194	M8 X 55MM HEX SOC HD SCREW
110	1246157	M8.1 LOCK WASHER
111	1344330	M8 FLAT WASHER
112	909588	BRACKET, T2
	1345527	BRACKET, T1
113	909583	RAM, T2
	1345526	RAM, T1
114	1246053	M8 X 25MM HEX SOC HD SCREW
115	1246157	M8.1 LOCK WASHER
116	1344330	M8 FLAT WASHER
117	1346741	GUARD
118	1243520	M6.1 LOCK WASHER
119	1345859	M6 X 12MM BUTTON HD SCREW
120	1246084	M6 X 18MM HEX SOC SET SCR NOTE B
121	1246116	M10.5 FLAT WASHER
122	1346730	LOCKNUT
123	1340665	O-RING
124	1346732	LOCK BAR
125	1246016	M8 X 25MM HEX HD SCREW
126	1243398	M8 HEX NUT
127	1346749	PIN
128	909587	BRACKET (RH), T2
	1345521	BRACKET (RH), T1
129	1243379	M6 X 10MM HEX SOC HD SCREW
130	909584	FENCE BRACKET, T2
	1346735	FENCE BRACKET, T1
131	1346736	STOP
132	1344330	M8 FLAT WASHER
133	1310105	M8 X 16MM HEX HD SCREW NOTE B
134	1246016	M8 X 25MM HEX HD SCREW
135	1243398	M8 HEX NUT
136	909581	BRACKET (LH), T2
	1345516	BRACKET (LH), T1
137	1246084	M6 X 18MM HEX SOC SET SCR NOTE B
138	1346749	PIN
139	1346739	SPECIAL SCREW
140	1243336	M6 X 20MM HEX SOC HD SCREW
141	1346740	REAR CLAMP
142	1246016	M8 X 25MM HEX HD SCREW
143	1243398	M8 HEX NUT
144	1346749	PIN
145	909585	SUPPORT, T2
	1346737	SUPPORT, T1
146	1340149	KNOB
147	1340150	STUD
148	909586	FENCE, INCL., T2
	900980	FENCE, INCL., T1
149	1346697	WARNING LABEL
150	1310016	5MM DRIVE SCREW

* NOT SHOWN ASSEMBLED

NOTE B: WHEN SERVICING, USE THREAD RETAINING COMOUND PRIOR TO INSTALLATION.



REPLACEMENT PARTS

Ref.	No.	Part No.	Description
*		52-877	8" JOINTER ENCLOSED STAND, CONST OF
*		438-01-317-0146	SWITCH ASSY, CONST OF:
201		422-39-067-0001	SWITCH ACTUATOR
202		438-01-017-0206	SWITCH
203		901-01-060-0649	5/16-18 X 1" HEX HD SCREW
204		904-01-010-1620	FLAT WASHER
205		422-39-014-0009	SWITCH BOX COVER, INCL:
206		436-01-754-0007	SWITCH LABEL, T2
		1346700	SWITCH LABEL, T1
207		438-01-302-0718	FEMALE CORD ASSY
208		422-39-089-0007	SWITCH PLATE
209		901-05-163-1229	#10-16 X 1/2" PAN HD SCREW
210		901-05-163-1229	#10-16 X 1/2" PAN HD SCREW
211		904-02-010-1703	5/16" LOCK WASHER
212		902-01-010-1300	5/16-18 HEX NUT
213		901-05-163-1229	#10-16 X 1/2" PAN HD SCREW
214		422-39-013-0001	SWITCH BOX
215		438-01-302-0718	CORD SET
218		926-04-013-1775	PULLEY, INCL:
219		901-04-150-0205	5/16-18 X 1/4" HEX SOC SET SCREW
220		925-01-011-2165	V BELT
221		912058	MOTOR ASSY, T2
		438-02-314-2175	MOTOR ASSY, T1
222		927-03-010-2695	KEY
223		901-11-020-0834	5/16-18 X 3/4" CARRIAGE HD SCREW
224		902-01-503-1514	5/16-18 FLANGE NUT
225		901-05-213-1711	#10-16 X 1/2" HEX WASHER HD SCREW
226	n	910353	DUST CHUTE, T2
		406-12-026-0001	DUST CHUTE, T1
227		909590	CABINET ASSY, INCL:, T2
		436-01-318-0022	CABINET ASSY, INCL:, T1
227A		909589	BACK PANEL, T2
		436-01-123-0003	BACK PANEL, T1
227B		901-06-443-1806	#10-24 X 1/2" HEX HD SCREW
228		436-01-754-0004	NAMEPLATE, T2
		436-01-137-0002	NAMEPLATE, T1
229		438-01-011-0051	BUSHING INSULATOR
230		901-01-060-0646	3/8-16 X 2" HEX HD SCREW
231		904-01-010-1605	3/8" FLAT WASHER
232		904-01-010-1605	3/8" FLAT WASHER
233		904-02-020-1704	3/8" LOCK WASHER
234		1350291	3/8-16 HEX NUT
235		1345503	SWITCH MOUNTING BRACKET
236		1246122	M8 X 16MM HEX SOC HD SCREW
237		1246157	M8.1 LOCK WASHER
238		1344330	M8 FLAT WASHER
239		909570	STAND HARDWARE PACK
*			NOT SHOWN ASSEMBLED

STANDARD SAFETY EQUIPMENT

In order to promote tool safety, Delta Machinery strictly enforces the policy of repairing or replacing any damaged or missing standard safety equipment on machines presented to Delta Authorized Service Centers for service/repairs. Any product that is presented to a Delta Authorized Service Centers for repairs which contains missing or damaged standard safety equipment will have that equipment repaired or replaced and the customer will be charged for any such service/repairs. Customers can avoid such charges only if the missing safety component is supplied to the service center at the time of repair.

This parts list is provided to aid in obtaining service parts. Copies of the instruction and maintenance literature can be obtained through the Delta Technical Publications Department or through your service outlet.