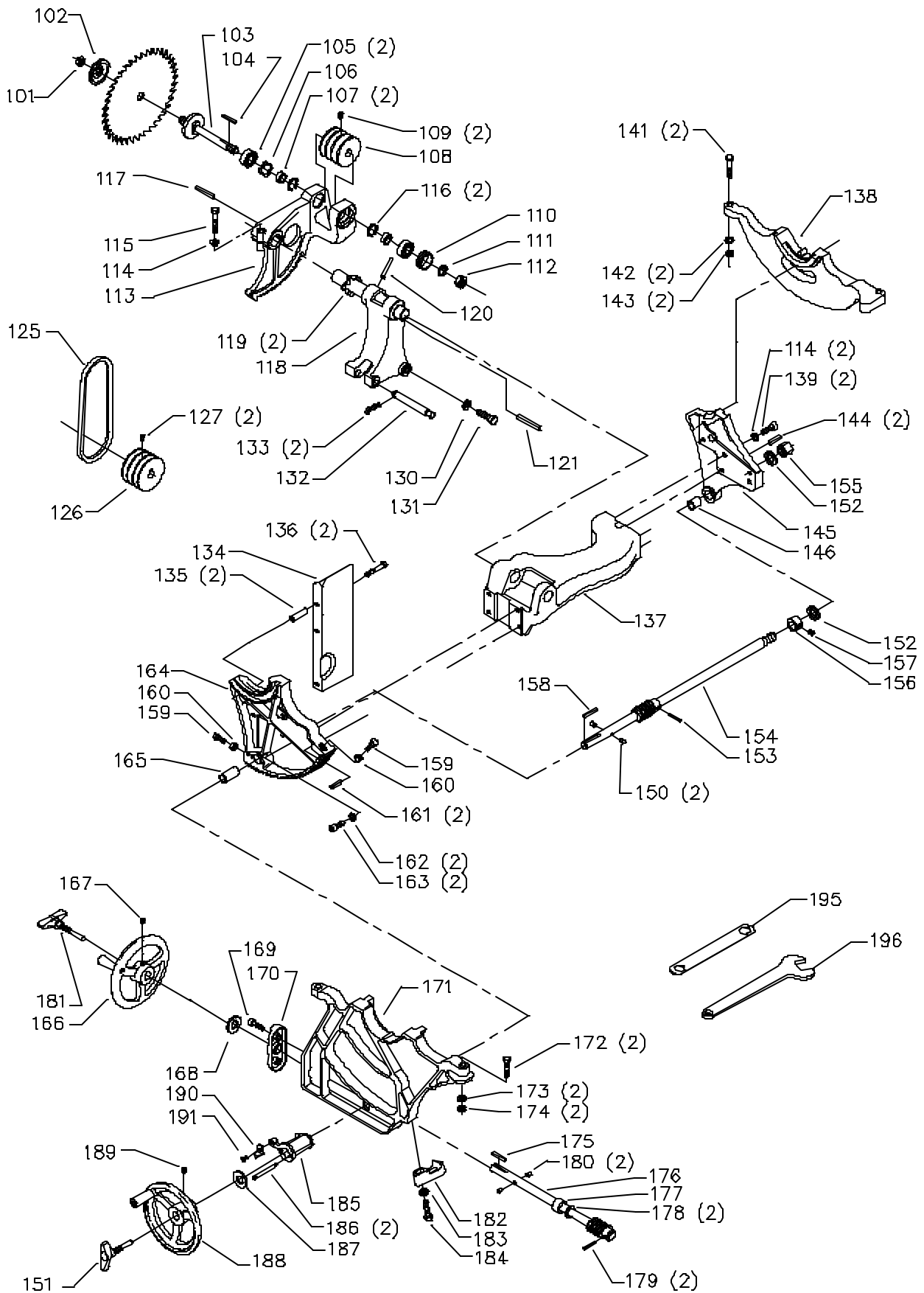


REPLACEMENT PARTS

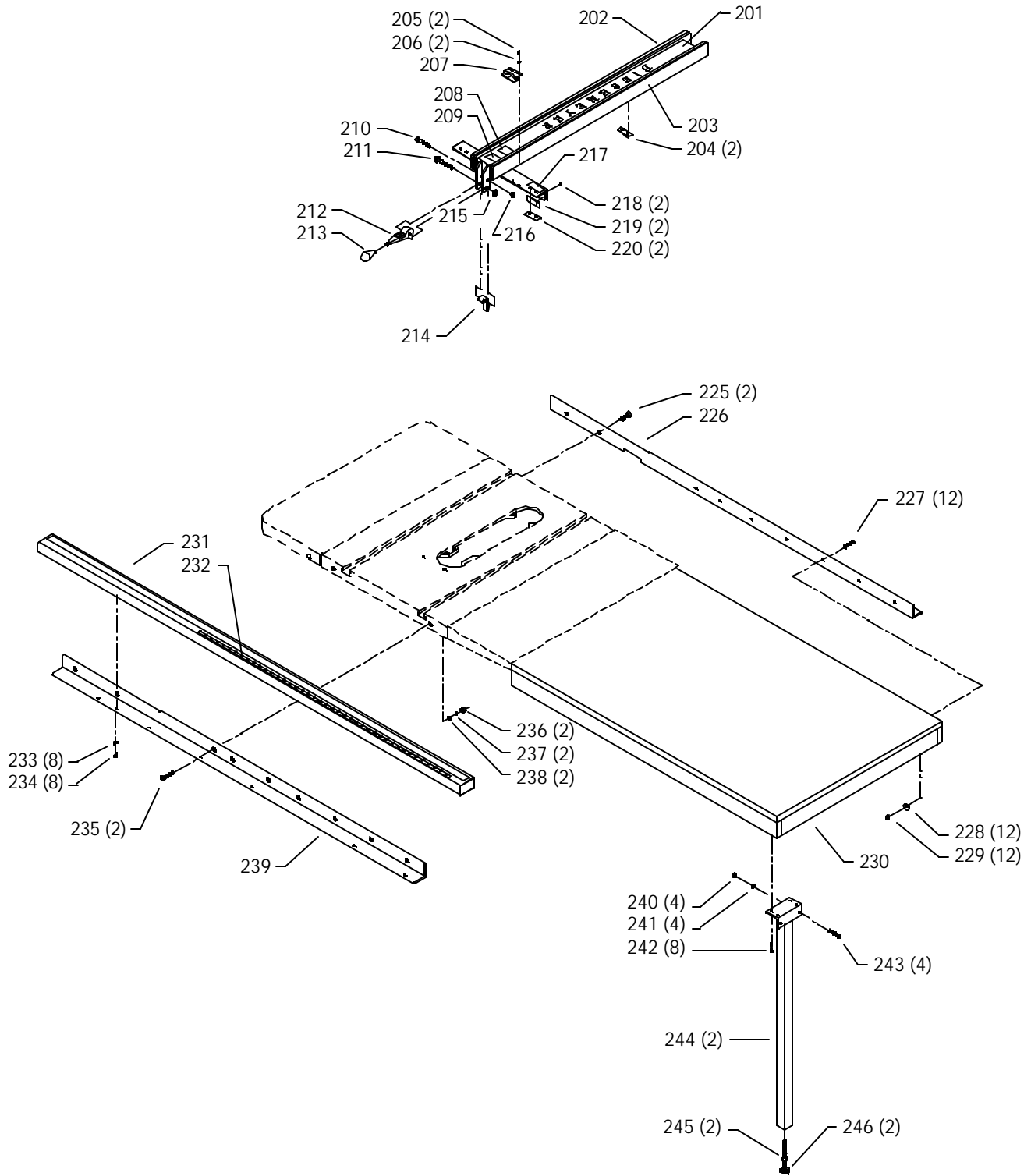
Ref.	Part No.	Description	Ref.	Part No.	Description
*	34-639	BLADE GUARD COMPLETE, CONST OF:	62	904-10-031-2097	WASHER
*	1086935	BLADE GUARD, CONST OF:	63	901-01-060-9964	7/16-20 X 1 1/4" HEX HD SCREW
1	1086334	SEE THRU GUARD	65	422-04-318-0015	CABINET ASSY , INCL:
2	1086388	PUSH NUT CAP	66	1087794	RIVET
3	1087811	PIN	67	422-04-132-0002	TILT SCALE
4	1086353	SPRING	66	1087794	RIVET
5	422-16-047-0001	KICK BACK FINGER	69	422-04-137-0009	NAMEPLATE
6	422-04-071-0007	PIN	70	422-04-331-0013	HINGED MOTOR COVER , INCL:
7	1086337	PIVOT BRACKET	71	901-05-213-1498	10 X 1/2" HEX WASHER HD SCREW
8	1086387	PUSH NUT	72	400-06-416-0001	GASKET
9	905-01-010-6725	5/32" X 11/16" SPRING PIN	73	537-85-004-0001	LATCH W/BUSHING & NUT
10	422-04-086-0002	SPLITTER W/BUSHING	74	422-04-752-0175	WARNING LABEL
11	901-01-060-0649	5/16-18 X 1" HEX HD SCREW	76	422-04-026-0003	DUST CHUTE
12	904-01-010-1620	FLAT WASHER	77	901-05-213-1498	10 X 1/2" HEX HD SCREW
13	904-02-010-1703	5/16" LOCK WASHER	78	904-10-031-2097	WASHER
14	422-04-014-0018	BRACKET	79	901-03-010-1487	7/16-20 X 3/4" HEX SOC HD SCREW
15	422-04-089-0003	SUPPORT ROD	80	438-01-011-0065	PLUG
16	422-04-014-0019	BRACKET	81	438-01-011-0074	HOLE PLUG - 2" DIA
17	901-01-060-0649	5/16-18 X 1" HEX HD SCREW	82	901-11-020-0834	5/16-18 X 3/4" CARRIAGE HD SCREW
18	902-01-020-1226	5/8-18 JAM NUT	83	901-05-213-1498	10 X 1/2" HEX HD SCREW
19	904-03-020-1751	5/8" INT TOOTH WASHER	75	422-35-060-0001	WRENCH HOOK
20	901-01-060-0649	5/16-18 X 1" HEX HD SCREW	85	422-04-305-0001	SUB BASE
21	422-03-072-0001	PLATE	86	904-01-010-1620	FLAT WASHER
22	422-04-014-0037	SPLITTER BRACKET	87	904-02-010-1703	5/16" LOCK WASHER
23	904-01-031-2934	1/4" FLAT WASHER	88	902-02-040-1303	5/16-18 SQUARE NUT
24	901-03-010-0230	1/4-20 X 2" HEX SOC HD SCREW	89	901-05-213-1498	10 X 1/2" HEX HD SCREW
25	901-03-010-0755	1/4-20 X 3/4" HEX SOC HD SCREW	90	422-04-014-0034	BRACKET
*	34-895	MITER GAGE, CONST OF:	91	422-35-014-0001	MITER GAGE HOLDER
26	422-02-074-0001	HOLE PLUG	92	901-05-213-1498	10 X 1/2" HEX HD SCREW
27	422-02-060-0003	HANDLE	95	955-03-010-0001	1/8" ALLEN WRENCH
28	904-07-010-5555	1/4" FIBER WASHER	96	955-03-010-2155	5/64" ALLEN WRENCH
29	422-01-355-0004	MITER GAGE BODY, INCL:			
30	901-04-150-1181	1/4-28 X 3/16" HEX SOC SET SCREW	*	NOT SHOWN ASSEMBLED	
31	901-04-150-9425	8-32 X 1/2" HEX SOC SET SCREW			
32	422-04-075-0002	POINTER			
33	422-04-004-0001	BAR, INCL:			
34	422-01-088-0004	STOP LINK			
35	901-04-150-1181	1/4-28 X 3/16" HEX SOC SET SCREW			
36	422-04-072-0001	PLATE			
37	901-02-030-5750	1/4-28 X 5/16" FLAT HD SCREW			
38	422-01-112-0001	SCREW			
40	43-349	EXTENSION WING, INCL:			
41	901-01-060-9964	7/16-20 X 1 1/4" HEX HD SCREW			
42	904-10-031-2097	WASHER			
43	438-01-011-0021	INSULATOR			
45	901-03-033-1046	5/16-18 X 1" FLAT HD SCREW			
46	902-01-010-1300	5/16-18 HEX NUT			
47	904-01-010-1620	FLAT WASHER			
48	902-01-293-1513	10-32 KEPS NUT			
49	422-40-014-0007	MOUNTING BRACKET - GPE			
50	901-02-453-1123	10-32 X 1/2" PAN HD SCREW			
51	438-01-016-0199	STARTER - GPE,1PH,230V, INCL:			
52	438-01-004-0007	CORD CLAMP			
53	438-01-011-0054	INSULATOR SLEEVE			
55	34-154	STANDARD INSERT, INCL:			
56	901-04-461-5297	1/4-28 X 3/8" HEX SOC SET SCREW			
60	422-04-391-0003	TABLE			
61	36-931	EXTENSION WING , INCL:			



REPLACEMENT PARTS

Ref.	No.	Part No.	Description	Ref.	No.	Part No.	Description
*		422-04-314-5003	ARBOR BRACKET, CONST OF:	166		422-04-400-0005	HANDWHEEL, INCL:
101		902-01-200-9848	ARBOR NUT - LH	167		901-04-190-0201	5/16-18 X 5/16" HEX SOC SET SCREW
102		422-04-103-5001	FLANGE	168		904-07-010-5569	3/4" FIBER WASHER
103		422-04-303-0003	ARBOR & FLANGE	169		901-03-010-0750	5/16-18 X 1" HEX SOC HD SCREW
104		927-03-020-2660	1 1/2" KEY	170		422-04-031-0015	COVER PLATE
105		1086894	BALL BEARING	171		422-04-014-5001	FRONT BRACKET
106		928-06-020-7382	LOAD SPRING	172		901-01-060-0682	3/8-24 X 1 1/2" HEX HD SCREW
107		422-04-104-0002	SPACER	173		904-02-020-1704	3/8" LOCK WASHER
108		926-03-991-2328	ARBOR PULLEY, INCL:	174		902-01-010-1207	3/8-24 HEX NUT
109		0908653	5/16-18 X 3/8" HEX SOC HD SCREW	175		927-03-010-2650	1 3/8" KEY
110		902-07-020-7176	BEARING CLOSURE NUT	176		422-04-406-5001	TILT SHAFT W/WORM, INCL:
111		904-05-010-6664	LOCK WASHER	177		904-10-031-4509	COLLAR
112		902-01-200-9847	SPECIAL NUT	178		904-01-021-3577	3/4" FIBER WASHER
113		422-04-314-5002	ARBOR BRACKET, INCL:	179		905-01-010-2706	3/16" X 1" SPRING PIN
114		904-02-020-1704	3/8" LOCK WASHER	180		422-04-074-0001	PLUG
115		901-01-060-3102	3/8-16 X 1 3/4" HEX HD SCREW	181		422-04-412-0009	LOCK KNOB
116		904-15-101-7147	INTERNAL RETAINING RING	182		422-04-055-0006	GUIDE BLOCK
117		927-03-010-2653	1 15/16" KEY	183		904-10-031-2097	WASHER
118		422-04-314-5004	MOTOR BRACKET W/SHAFT, INCL:	184		901-01-060-0681	7/16-20 X 1 1/2" HEX HD SCREW
119		928-06-011-4128	1 1/4" WAVE WASHER	185		422-04-014-2008	POINTER BRACKET
120		905-01-010-5072	1/4" X 2" SPRING PIN	186		0919714	8-32 X 2" FILL HD SCREW
121		927-03-010-2657	2.937" KEY	187		904-07-010-5569	3/4" FIBER WASHER
125		49-124	V-BELTS	188		422-04-400-0005	HANDWHEEL, INCL:
126		41-644	MOTOR PULLEY, INCL:	189		901-04-190-0201	5/16-18 X 5/16" HEX SOC SET SCREW
127		0908653	5/16-18 X 3/8" HEX SOC HD SCREW	190		422-04-075-0002	POINTER
130		904-10-031-2097	WASHER	191		901-06-110-3036	1/4-20 X 3/8" ROUND HD SCREW
131		901-01-060-0664	7/16-20 X 1" HEX HD SCREW	**		438-01-004-0054	CABLE TIE (See Service Note A)
132		422-04-071-5001	STEEL PIN	195		422-39-101-0001	WRENCH-7/8 X 1/2"
133		422-04-079-5001	SPRING CLIP	196		955-01-050-1472	WRENCH
134		422-04-036-5001	DEFLECTOR				
135		422-04-104-5005	SLEEVE	*			NOT SHOWN ASSEMBLED
136		901-01-060-0613	5/16-18 X 1 3/4" HEX HD SCREW	**			NOT SHOWN
137		422-04-102-5002	YOKE				
138		422-04-014-0042	BRACKET				
139		901-03-010-0775	3/8-16 X 1" HEX SOC HD SCREW				
141		901-01-060-0682	3/8-24 X 1 1/2" HEX HD SCREW				
142		904-02-020-1704	3/8" LOCK WASHER				
143		902-01-010-1207	3/8-24 HEX NUT				
144		905-01-010-2734	5/16" X 1" SPRING PIN				
145		422-04-395-5002	REAR TRUNNION, INCL:				
146		920-75-011-3934	BEARING				
*		422-04-406-5002	RAISING SHAFT ASSY. CONST OF:				
150		422-04-074-0001	PLUG				
151		422-04-412-0009	LOCK KNOB				
152		904-01-021-3577	3/4" FIBER WASHER				
153		905-01-010-2706	3/16" X 1" SPRING PIN				
154		422-04-406-0001	SHAFT W/WORM, INCL:				
155		902-01-210-1036	3/4-16 LOCK NUT				
156		434-01-404-0001	COLLAR, INCL:				
157		901-04-190-0201	5/16-18 X 5/16" HEX SOC SET SCREW				
158		927-03-010-2650	1 3/8" KEY				
159		901-01-060-5769	5/16-24 X 1" HEX HD SCREW				
160		902-01-020-1228	5/16-24 JAM NUT				
161		905-01-010-2734	5/16" X 1" SPRING PIN				
162		904-02-020-1704	3/8" LOCK WASHER				
163		901-03-010-0775	3/8-16 X 1" HEX SOC HD SCREW				
164		422-04-395-5001	FRONT TRUNNION, INCL:				
165		920-75-011-3935	BUSHING				

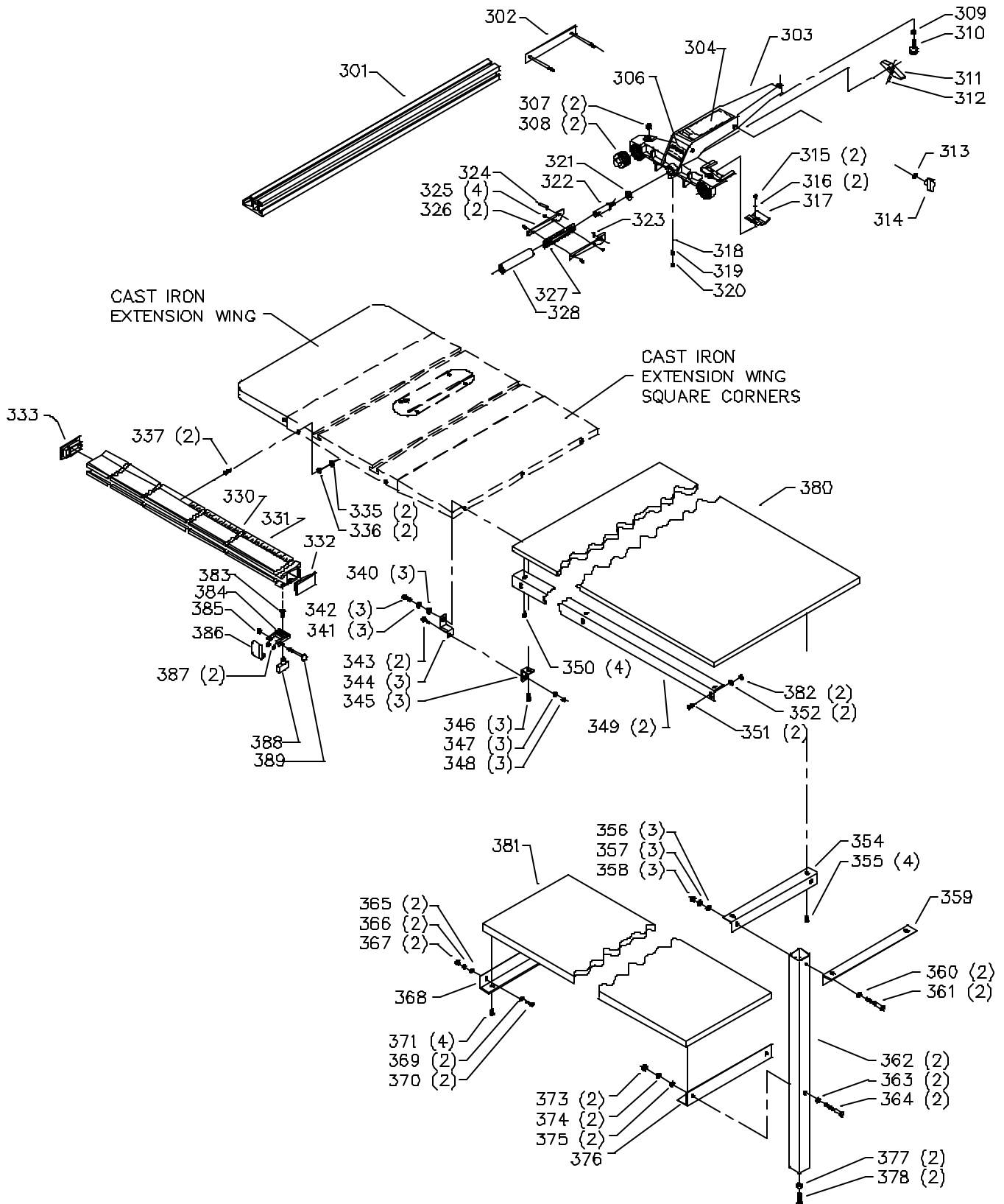
FENCE FOR MODEL 36-957 ONLY



REPLACEMENT PARTS

<u>Ref.</u>	<u>Part No.</u>	<u>Description</u>
201	1358000	FENCE ASSY , INCL:
202	1358004	LEFT BOARD SERVICE KIT
203	1358005	RIGHT BOARD SERVICE KIT
204	1350019	GLIDE PAD
205	1352033	8-32 X 3/8" ROUND HD SCREW
206	1352034	FLAT WASHER
207	1350017	CURSOR
208	1350077	FLAG DECAL
209	1350078	NAMEPLATE
210	1350277	1/4-20 X 1 3/4" HEX HD SCREW
211	1350278	SPECIAL SCREW
212	1352410	CAM HANDLE
213	1350018	KNOB
214	1352412	CAM FOOT ASSY
215	1350279	3/8-16 LOCK NUT
216	1350280	1/4-20 LOCK NUT
217	1350155	DECAL
218	1350492	3/8-16 X 5/16" HEX SOC SET SCREW
219	1350051	GLIDE PAD
220	1350019	GLIDE PAD
225	1350285	3/8-24 X 1 1/4" HEX HD SCREW
226	1358003	REAR RAIL
227	1350289	1/4-20 X 1 1/2" FLAT HD SCREW
228	1350290	1/4" FLAT WASHER
229	1350284	1/4-20 HEX NUT
230	78-973	EXTENSION TABLE
231	1358001	GUIDE TUBE ASSY, INCL:
232	79-056	SCALE (SEE B)
233	1350293	1/4" LOCK WASHER
234	1350294	1/4-20 X 3/4" HEX HD SCREW
235	1352011	3/8-16 X 1 1/2" FLAT HD SCREW
236	1350291	3/8-16 HEX NUT
237	1350288	3/8" LOCK WASHER
238	1350286	FLAT WASHER
239	1358002	FRONT RAIL
240	1350284	1/4-20 HEX NUT
241	1350283	1/4" FLAT WASHER
242	1350439	8 X 5/8" PAN HD SCREW
243	1350289	1/4-20 X 1 1/2" FLAT HD SCREW
244	1352385	LEG ASSY
245	1350291	3/8-16 HEX NUT
246	1350194	LEVELING ASSY

FENCE FOR MODEL 36-955 ONLY



REPLACEMENT PARTS

Ref.	Part No.	Description	Ref.	Part No.	Description
*	36-949	52" UNIFENCE ASSY , CONST OF:	363	904-01-010-1620	FLAT WASHER
301	34-894	43" FENCE	364	901-01-050-5759	5/16-18 X 2 3/4" HEX HD SCREW
302	400-06-327-0001	CLAMP ASSY	365	904-01-010-1614	FLAT WASHER
303	422-27-312-0002	FENCE BODY ASSY, INCL:	366	904-02-020-1702	1/4" LOCK WASHER
304	422-27-754-0009	LABEL	367	902-01-120-1034	1/4-20 HEX NUT
306	422-27-754-0007	LABEL	368	422-27-014-0007	BRACKET
307	422-39-112-0005	LEVELING SCREW	369	904-01-010-1614	FLAT WASHER
308	422-39-048-0001	ADJUSTMENT PLUG	370	901-01-060-0612	1/4-20 X 5/8" HEX HD SCREW
309	902-01-010-1300	5/16-18 HEX NUT	371	901-25-043-1791	8-8 X 13/16" HEX WASHER HD SCR
310	422-27-048-0001	REAR SUPPORT FOOT	373	902-01-010-1300	5/16-18 HEX NUT
311	422-27-068-0003	LOCKING LUG	374	904-02-010-1703	5/16" LOCK WASHER
312	905-01-010-2702	1/4" X 5/8" SPRING PIN	375	904-01-010-1620	FLAT WASHER
313	904-01-010-1620	FLAT WASHER	376	422-27-014-0007	BRACKET
314	424-12-060-0005	KNOB	377	902-01-020-5433	3/8-16 JAM NUT
315	901-03-043-1713	8-32 X 3/8" BUTTON HD SCREW (EMO)	378	901-09-131-5295	LEVELING SCREW
316	904-01-013-1738	3/16" FLAT WASHER	*	36-947	AUXILLARY TABLE & SHELF, CONST OF:
317	400-06-375-0002	CURSOR	380	422-27-091-0017	TABLE
318	921-01-110-0001	BALL	381	422-27-091-0018	SHELF
319	928-01-250-0001	SPRING	382	902-01-120-1034	NUT
320	901-04-150-9440	1/4-20 X 1/2" HEX SOC SET SCREW	*	36-899	FLIP STOP, CONST OF:
321	422-27-104-0002	THRUST WASHER	383	901010600649	5/16-18 X 1.00 HEX HEAD SCREW
322	422-39-106-0002	SHAFT	384	422270840007	BRACKET
323	908-25-013-1756	O-RING	385	902012122409	LOCKNUT
324	905-01-103-1370	5/16" X 1 1/4" SPRING PIN	386	422270880002	FLIP STOP
325	901-05-163-1229	10-16 X 1/2" PAN HD SCREW	387	904070105573	WASHER
326	422-39-019-0001	CAM HANDLE	388	424120600005	KNOB 2" 5/16-18
327	422-39-138-0002	HANDLE	389	901010600622	1/4-20 X 2" HEX HEAD SCREW
328	422-39-105-0001	GRIP			
330	36-904	52" UNIFENCE RAIL, INCL:	*	NOT SHOWN ASSEMBLED	
331	400-06-432-0001	SCALE KIT (SEE B)	**	NOT SHOWN	
332	422-27-020-0004	END CAP-RH			
333	422-27-020-0003	END CAP-LH			
335	902-01-020-5433	3/8-16 JAM NUT			
336	904-01-010-1615	FLAT WASHER			
337	901-01-060-0642	BOLT			
340	904-01-010-1638	FLAT WASHER			
341	904-02-010-1716	1/4" LOCK WASHER			
342	901-01-080-0580	7/16-20 X 3/4" HEX HD SCREW			
343	901-11-020-0821	1/4-20 X 3/4" CARRIAGE HD SCREW			
344	422-27-014-0003	ADAPTER			
345	422-27-089-0007	ANGLE BRACKET			
346	901-25-043-1791	8-8 X 13/16" HEX WASHER HD SCR			
347	904-01-010-1514	FLAT WASHER			
348	902-01-120-1034	1/4-20 HEX NUT			
349	422-27-089-0015	TABLE SUPPORT			
350	901-25-043-1791	8-8 X 13/16" HEX WASHER HD SCR			
351	901-01-060-0612	1/4-20 X 5/8" HEX HD SCREW			
352	904-01-010-1614	FLAT WASHER			
354	422-27-014-0007	BRACKET			
355	901-25-043-1791	8-8 X 13/16" HEX WASHER HD SCR			
356	904-01-010-1620	FLAT WASHER			
357	904-02-010-1703	5/16" LOCK WASHER			
358	902-01-010-1300	5/16-18 HEX NUT			
359	422-27-014-0007	BRACKET			
360	904-01-010-1620	FLAT WASHER			
361	901-01-060-5759	5/16-18 X 2 3/4" HEX HD SCREW			
362	422-27-366-0004	LEG ASSY			

SERVICE NOTES:

B-96" Scale is available under Part number 400-06-432-0005.

STANDARD SAFETY EQUIPMENT

In order to promote tool safety, Delta Machinery strictly enforces the policy of repairing or replacing any damaged or missing standard safety equipment on machines presented to Delta Authorized Service Centers for service/repairs. Any product which is presented to a Delta Authorized Service Centers for repairs which contains missing or damaged standard safety equipment will have that equipment repaired or replaced and the customer will be charged for any such service/repairs. Customers can avoid such charges only if the missing safety component is supplied to the service center at the time of repair.

This parts list is provided to aid in obtaining service parts. Copies of the instruction and maintenance literature can be obtained through the Delta Technical Publications Department or through your service outlet.