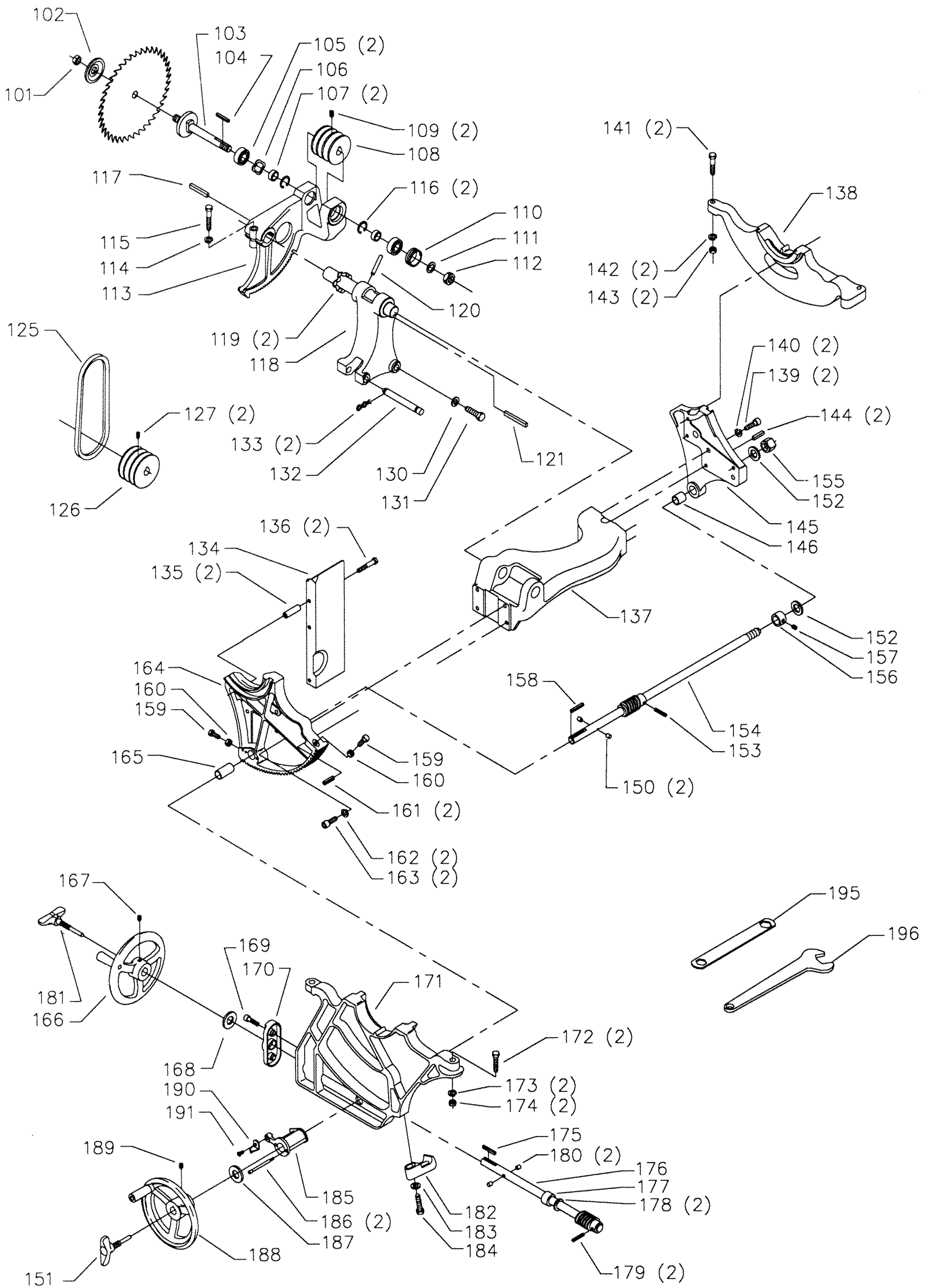


## REPLACEMENT PARTS

REF NO	PART NUMBER	DESCRIPTION	REF NO	PART NUMBER	DESCRIPTION
*	34-639	BLADE GUARD COMPLETE, CONST OF:	46	902-01-010-1300	5/16-18 HEX NUT
*	1086935	BLADE GUARD, CONST OF:	47	904-01-010-1620	FLAT WASHER
1	1086334	SEE THRU GUARD	48	902-01-293-1513	#10-32 KEPS NUT
2	1086388	PUSH NUT CAP	49	422-40-014-0007	MOUNTING BRACKET - GPE
3	1087811	PIN	50	901-02-453-1123	#10-32 X 1/2" PAN HD SCREW
4	1086353	SPRING	51	438-01-016-0199	STARTER (BLACK), GPE, 1PH, 230V, INCL:
5	422-16-047-0001	KICK BACK FINGER	52	438-01-004-0007	CORD CLAMP
6	422-04-071-0007	PIN	53	438-01-011-0054	INSULATOR SLEEVE
7	1086337	PIVOT BRACKET	55	34-154	STANDARD INSERT, INCL:
8	1086387	PUSH NUT	56	901-04-461-5297	1/4-28 X 3/8" HEX SOC SET SCREW
9	905-01-010-6729	5/32" X 11/16" SPRING PIN	60	422-04-391-0003	TABLE
10	422-04-086-0002	SPLITTER W/BUSHING	61	36-931	EXTENSION WING (SQUARE CORNER), INCL
11	901-01-060-0649	5/16-18 X 1" HEX HD SCREW	62	904-10-031-2097	WASHER
12	904-01-010-1620	FLAT WASHER	63	901-01-060-9964	7/16 X 1 1/4" HEX HD SCREW
13	904-02-010-1703	5/16" LOCK WASHER	65	422-04-318-0015	CABINET ASSY (PLATINUM), INCL:
14	422-04-014-0018	BRACKET	66	1087794	RIVET
15	422-04-089-0003	SUPPORT ROD	67	422-04-132-0002	TILT SCALE
16	422-04-014-0019	BRACKET	68	1087794	RIVET
17	901-01-060-0649	5/16-18 X 1" HEX HD SCREW	69	422-04-137-0009	NAMEPLATE
18	902-01-020-1226	5/8-18 JAM NUT	70	422-04-331-0013	HINGED MOTOR COVER (PLATINUM), INCL:
19	904-03-020-1751	5/8" INT TOOTH WASHER	71	901-05-213-1498	#10 X 1/2" HEX WASHER HD SCREW
20	901-01-060-0649	5/16-18 X 1" HEX HD SCREW	72	400-06-416-0001	GASKET
21	422-03-072-0001	PLATE	73	537-85-004-0001	LATCH W/BUSH & NUT
22	422-04-014-0037	SPLITTER BRACKET	74	422-04-752-0175	WARNING LABEL
23	904-01-031-2934	1/4" FLAT WASHER	76	422-04-026-0006	DUST CHUTE (PLATINUM)
24	901-03-010-0230	1/4-20 X 2" HEX SOC HD SCREW	77	901-05-213-1498	#10 X 1/2" HEX WASHER HD SCREW
25	901-03-010-0755	1/4-20 X 3/4" HEX SOC HD SCREW	78	904-10-031-2097	WASHER
*	34-895	MITER GAGE, CONST OF:	79	901-03-010-1487	7/16-20 X 3/4" HEX SOC HD SCREW
26	422-02-074-0001	HOLE PLUG	80	438-01-011-0065	PLUG
27	422-02-060-0003	HANDLE	81	438-01-011-0074	HOLE PLUG - 2" DIA
28	904-07-010-5555	1/4" FIBER WASHER	82	901-11-020-0834	5/16-18 X 3/4" CARRIAGE HD SCR
29	422-01-355-0004	MITER GAGE BODY, INCL:	83	901-05-213-1498	#10 X 1/2" HEX WASHER HD SCREW
30	901-04-150-1181	1/4-28 X 3/16" HEX SOC SET SCREW	84	422-35-060-0001	WRENCH HOOK
31	901-04-150-9428	#08-32 X 1/2" HEX SOC SET SCREW	85	422-04-305-0001	SUB BASE
32	422-04-075-0002	POINTER	86	904-01-010-1620	FLAT WASHER
33	422-04-004-0001	BAR, INCL:	87	904-02-010-1703	5/16" LOCK WASHER
34	422-01-088-0004	STOP LINK	88	902-02-040-1303	5/16-18 SQUARE NUT
35	901-04-150-1181	1/4-28 X 3/16" HEX SOC SET SCREW	89	901-05-213-1498	#10 X 1/2" HEX WASHER HD SCREW
36	422-04-072-0001	PLATE	90	422-04-014-0034	BRACKET
37	901-02-030-5750	1/4-28 X 5/16" FLAT HD SCREW	91	422-35-014-0001	MITER GAGE HOLDER
38	422-01-112-0001	SCREW	92	901-05-213-1498	#10 X 1/2" HEX WASHER HD SCREW
40	43-349	EXTENSION WING, INCL:	95	955-03-010-0001	1/8" ALLEN WRENCH
41	901-01-060-9964	7/16-20 X 1 1/4" HEX HD SCREW	96	955-03-010-2155	5/64" ALLEN WRENCH
42	904-10-031-2097	WASHER			
43	438-01-011-0021	INSULATOR			
45	901-03-033-1046	5/16-18 X 1" FLAT HD SCREW	*	NOT SHOWN ASSEMBLED	

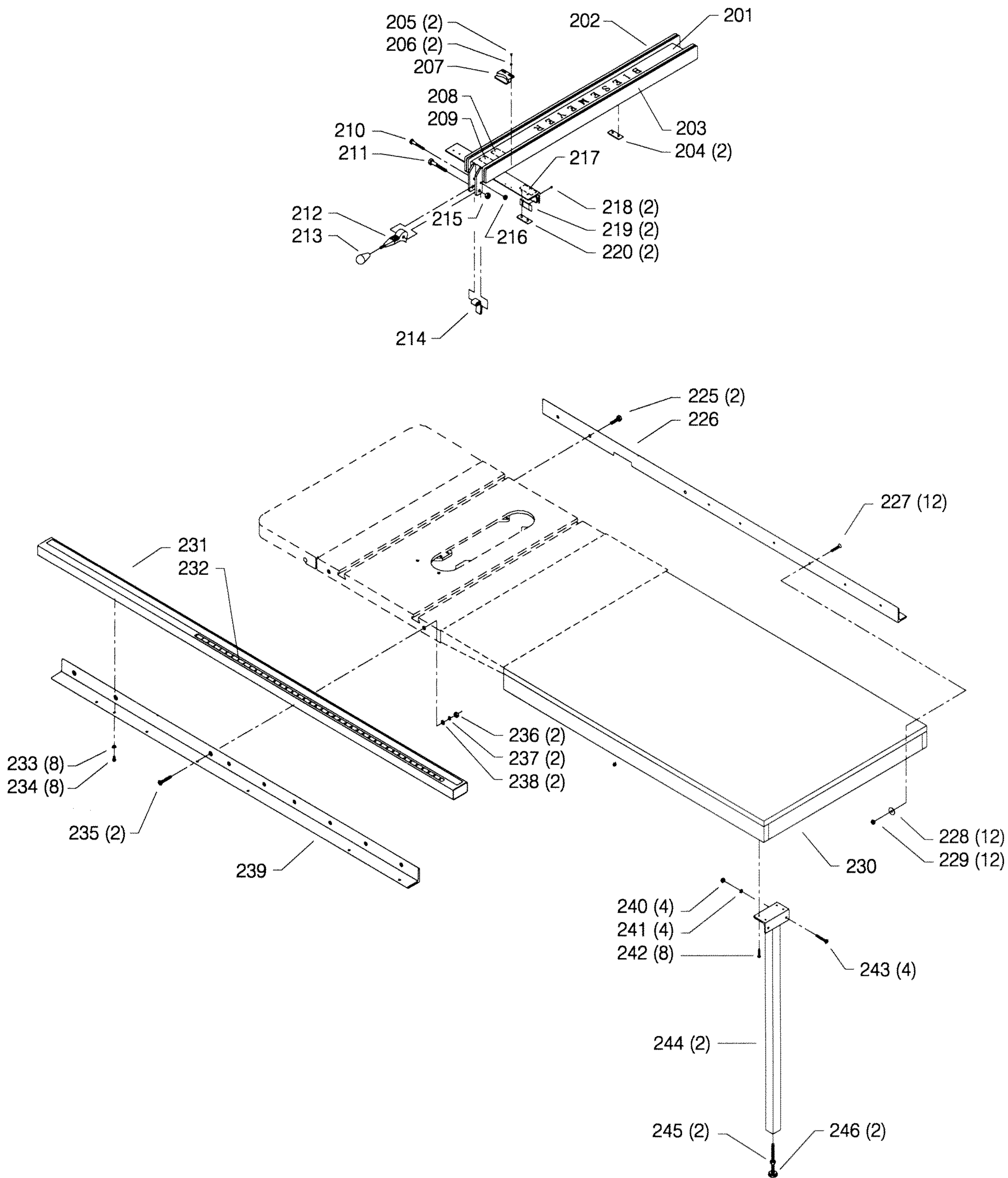


## REPLACEMENT PARTS

REF NO	PART NUMBER	DESCRIPTION	REF NO	PART NUMBER	DESCRIPTION
*	422-04-314-5003	ARBOR BRACKET, CONST OF:	*	422-04-406-5002	RAISING SHAFT ASSY, CONST OF:
101	902-01-200-9848	ARBOR NUT - LH	150	422-04-074-0001	PLUG
102	422-04-103-5001	FLANGE	151	422-04-412-0009	LOCK KNOB
103	422-04-303-0003	ARBOR & FLANGE	152	904-01-021-3577	3/4" FIBER WASHER
104	927-03-020-2660	1 1/2" KEY	153	905-01-010-2706	3/16" X 1" SPRING PIN
105	1086894	BALL BEARING	154	422-04-406-0001	SHAFT W/WORM, INCL:
106	928-06-020-7382	LOAD SPRING	155	902-01-210-1036	3/4-16 LOCK NUT
107	422-04-104-0002	SPACER	156	434-01-404-0001	COLLAR, INCL:
108	926-03-991-2328	ARBOR PULLEY, INCL:	157	901-04-190-0201	5/16-18 X 5/16" HEX SOC SET SCREW
109	0908653	5/16-18 X 3/8" HEX SOC HD SCREW	158	927-03-010-2650	1 3/8" KEY
110	902-07-020-7176	BEARING CLOSURE NUT	159	901-01-060-5769	5/16-24 X 1" HEX HD SCREW
111	904-05-010-6664	LOCK WASHER	160	902-01-020-1228	5/16-24 JAM NUT
112	902-01-200-9847	SPECIAL NUT	161	905-01-010-2734	5/16" X 1" SPRING PIN
113	422-04-314-5002	ARBOR BRACKET. INCL:	162	904-02-020-1704	3/8" LOCK WASHER
114	904-02-020-1704	3/8" LOCK WASHER	163	901-03-010-0775	3/8-16 X 1" HEX SOC HD SCREW
115	901-01-060-3102	3/8-16 X 1 3/4" HEX HD SCREW	164	422-04-395-5001	FRONT TRUNNION, INCL:
116	904-15-101-7147	INT RET RING	165	920-75-011-3935	BUSHING
117	927-03-010-2653	1 15/16" KEY	166	422-04-400-0005	HANDWHEEL, INCL:
118	422-04-314-5004	MOTOR BRACKET W/SHAFT, INCL:	167	901-04-190-0201	5/16-18 X 5/16" HEX SOC SET SCREW
119	928-06-011-4128	1 1/4" WAVE WASHER	168	904-07-010-5569	3/4" FIBER WASHER
120	905-01-010-5072	1/4" X 2" SPRING PIN	169	901-03-010-0750	5/16-18 X 1" HEX SOC HD SCREW
121	927-03-010-2657	2.937" KEY	170	422-04-031-0015	COVER PLATE
125	49-124	V-BELTS (MATCHED SET OF THREE)	171	422-04-014-5001	FRONT BRACKET
126	41-644	MOTOR PULLEY, INCL:	172	901-01-060-0682	3/8-24 X 1 1/2" HEX HD SCREW
127	0908653	5/16-18 X 3/8" HEX SOC HD SCREW	173	904-02-020-1704	3/8" LOCK WASHER
130	904-10-031-2097	WASHER	174	902-01-010-1207	3/8-24 HEX NUT
131	901-01-060-0664	7/16-20 X 1" HEX HD SCREW	175	927-03-010-2650	1 3/8" KEY
132	422-04-071-5001	STEEL PIN	176	422-04-406-5001	TILT SHAFT W/WORM, INCL:
133	422-04-079-5001	SPRING CLIP	177	904-10-031-4509	COLLAR
134	422-04-036-5001	DEFLECTOR	178	904-01-021-3577	3/4" FIBER WASHER
135	422-04-104-5005	SLEEVE	179	905-01-010-2706	3/16" X 1" SPRING PIN
136	901-01-060-0613	5/16-18 X 1 3/4" HEX HD SCREW	180	422-04-074-0001	PLUG
137	422-04-102-5002	YOKE	181	422-04-412-0009	LOCK KNOB
138	422-04-014-0042	BRACKET	182	422-04-055-0006	GUIDE BLOCK
139	901-03-010-0775	3/8-16 X 1" HEX SOC HD SCREW	183	904-10-031-2097	WASHER
141	904-02-020-1704	3/8" LOCK WASHER	184	901-01-060-0681	7/16-20 X 1 1/2" HEX HD SCREW
142	901-01-060-0682	3/8-24 X 1 1/2" HEX HD SCREW	185	422-04-014-2008	POINTER BRACKET
143	902-01-010-1207	3/8-24 HEX NUT	186	0919714	#08-32 X 2" FILL HD SCREW
144	905-01-010-2734	5/16" X 1" SPRING PIN	187	904-07-010-5569	3/4" FIBER WASHER
145	422-04-395-5002	REAR TRUNNION	188	422-04-400-0005	HANDWHEEL, INCL:
			189	901-04-190-0201	5/16-18 X 5/16" HEX SOC SET SCREW
			190	422-04-075-0002	POINTER
			191	901-06-110-3036	1/4-20 X 3/8" ROUND HD SCREW
			**	438-01-004-0054	CABLE TIE (See Service Note A)
			195	422-39-101-0001	WRENCH - 7/8 X 1/2"
			196	955-01-050-1472	WRENCH
			*	NOT SHOWN ASSEMBLED	
			**	NOT SHOWN	

### SERVICE NOTES:

A - Used to secure motor and switch cords. See owners manual for details.



## REPLACEMENT PARTS

REF NO	PART NUMBER	DESCRIPTION
201	1358000	FENCE ASSY (PLATINUM), INCL;
202	1358004	LEFT BOARD SERVICE KIT (PLATINUM) <i>(See Service Note B)</i>
203	1358005	RIGHT BOARD SERVICE KIT (PLATINUM) <i>(See Service Note B)</i>
204	1350019	GLIDE PAD
205	1352033	#08-32 X 3/8" ROUND HD SCREW
206	1352034	FLAT WASHER
207	1350017	CURSOR
208	1350077	FLAG DECAL
209	1350078	NAMEPLATE
210	1350277	1/4-20 X 1 3/4" HEX HD SCREW
211	1350278	SPECIAL SCREW
212	1352410	CAM HANDLE ASSY (PLATINUM)
213	1350018	KNOB
214	1352412	CAM FOOT ASSY (PLATINUM)
215	1350279	3/8-16 LOCK NUT
216	1350280	1/4-20 LOCK NUT
217	1350155	DECAL
218	1350492	3/8-16 X 5/16" HEX SOC SET SCREW
219	1350051	GLIDE PAD
220	1350019	GLIDE PAD
225	1350285	3/8-24 X 1 1/4" HEX HD SCREW
226	1358003	REAR RAIL (BLACK)
227	1350289	1/4-20 X 1 1/2" FLAT HD SCREW
228	1350290	1/4" FLAT WASHER
229	1350284	1/4-20 HEX NUT
230	78-973	EXTENSION TABLE
231	1358001	GUIDE TUBE ASSY (PLATINUM), INCL;
232	79-056	SCALE <i>(See Service Note C)</i>
233	1350293	1/4" LOCK WASHER
234	1350294	1/4-20 X 3/4" HEX HD SCREW
235	1352011	3/8-16 X 1 1/2" FLAT HD SCREW
236	1350291	3/8-16 HEX NUT
237	1350288	3/8" LOCK WASHER
238	1350286	FLAT WASHER
239	1358002	FRONT RAIL (BLACK)
240	1350284	1/4-20 HEX NUT
241	1350283	1/4" FLAT WASHER
242	1350439	#08 X 5/8" PAN HD SCREW
243	1350289	1/4-20 X 1 1/2" FLAT HD SCREW
244	1352385	LEG ASSY (BLACK)
245	1350291	3/8-16 HEX NUT
246	1350194	LEVELING ASSY

\* NOT SHOWN ASSEMBLED

### SERVICE NOTES:

*B - Kit includes; Board, Laminate, T-Edging and Hardware.*  
*C - Scale is provided oversize and must be cut to proper length.*

---

#### STANDARD SAFETY EQUIPMENT

In order to promote tool safety, Delta International Machinery Corp. strictly enforces the policy of repairing or replacing any damaged or missing standard safety equipment on machines presented to Delta Authorized Service Center for service/repairs. Any product which is presented to a Delta Authorized Service Center for repairs which contains missing or damaged standard safety equipment will have that equipment repaired or replaced and the customer will be charged for any such service/repairs. Customers can avoid such charges only if the missing safety component is supplied to the service center at the time of repair.

*This parts list is provided to aid in obtaining service parts. Copies of the instruction and maintenance literature can be obtained through the Delta Technical Publications Department or through your local service outlet.*