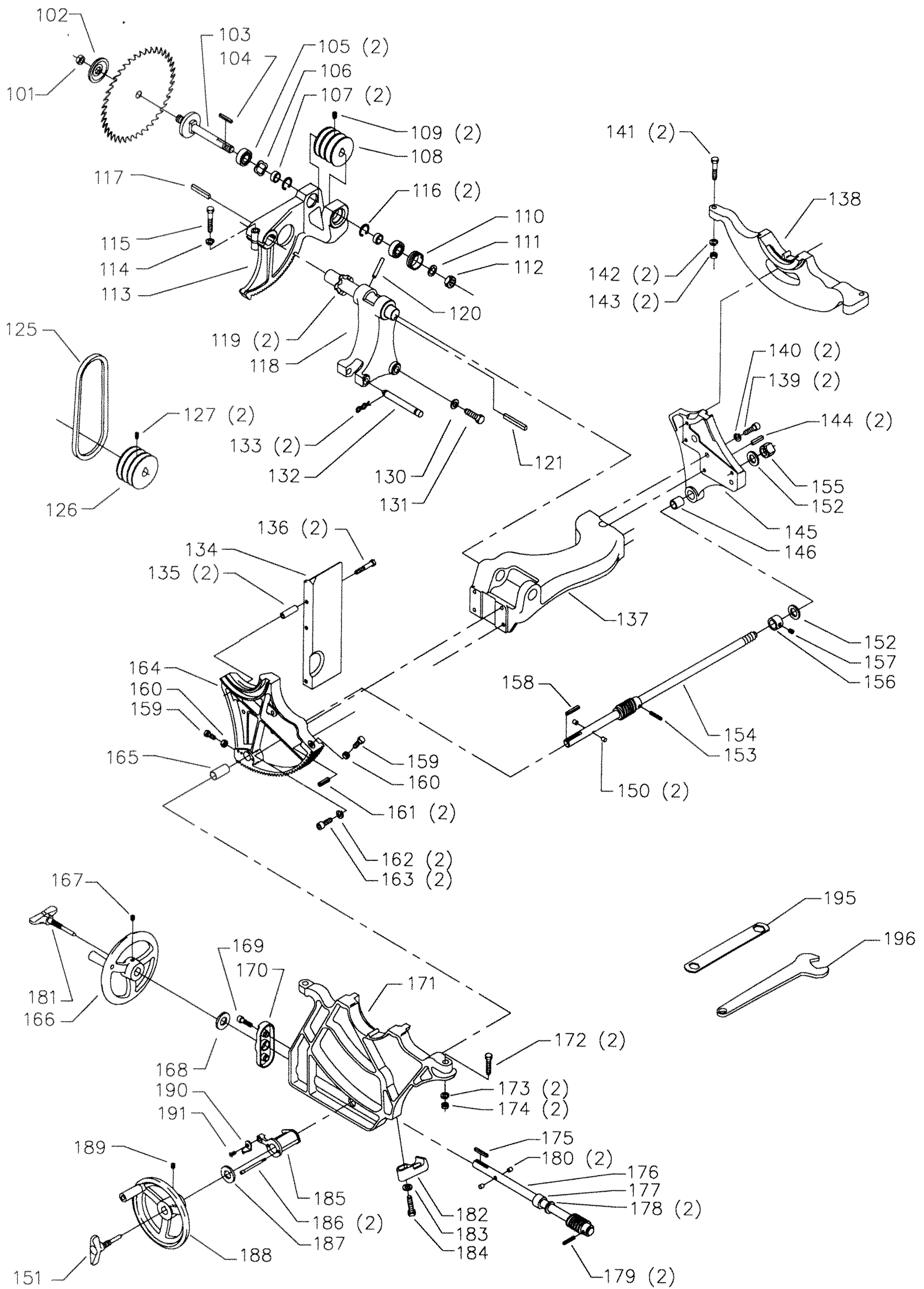


REPLACEMENT PARTS

REF NO	PART NUMBER	DESCRIPTION	REF NO	PART NUMBER	DESCRIPTION
*	34-639	BLADE GUARD COMPLETE, CONST OF:	46	904-01-010-1620	FLAT WASHER
*	1086935	BLADE GUARD, CONST OF:	47	902-01-010-1300	5/16-18 HEX NUT
1	1086334	SEE THRU GUARD	48	902-01-293-1513	#10-32 KEPS NUT
2	1086388	PUSH NUT CAP	49	422-40-014-0007	MOUNTING BRACKET - GPE
3	1087811	PIN	50	901-02-453-1123	#10-32 X 1/2" PAN HD SCREW
4	1086388	PUSH NUT CAP	51	438-01-016-0197	STARTER (WHITE), GPE, 1PH, 230V, INCL:
5	1086353	SPRING	52	438-01-004-0007	CORD CLAMP
6	422-16-047-0001	KICK BACK FINGER	53	438-01-011-0054	INSULATOR SLEEVE
7	422-04-071-0007	PIN	55	34-154	STANDARD INSERT, INCL:
8	1086337	PIVOT BRACKET	56	901-04-461-5297	1/4-28 X 3/8" HEX SOC SET SCREW
9	1086387	PUSH NUT	60	422-04-391-0003	TABLE
10	905-01-010-6729	5/32" X 11/16" SPRING PIN	61	36-931	EXTENSION WING (SQUARE CORNER), INCL
11	422-04-086-0002	SPLITTER W/BUSHING	62	904-10-031-2097	WASHER
12	901-01-060-0649	5/16-18 X 1" HEX HD SCREW	63	901-01-060-9964	7/16 X 1 1/4" HEX HD SCREW
13	904-01-010-1620	FLAT WASHER	65	422-04-318-0012	CABINET ASSY (WHITE), INCL:
14	904-02-010-1703	5/16" LOCK WASHER	66	1087794	RIVET
15	422-04-014-0018	BRACKET	67	422-04-132-0002	TILT SCALE
16	422-04-089-0003	SUPPORT ROD	68	1087794	RIVET
17	422-04-014-0019	BRACKET	69	422-04-137-0007	NAMEPLATE
18	901-01-060-0649	5/16-18 X 1" HEX HD SCREW	70	422-04-331-0010	HINGED MOTOR COVER (WHITE), INCL:
19	902-01-020-1226	5/8-18 JAM NUT	71	901-05-213-1498	#10 X 1/2" HEX WASHER HD SCREW
20	904-03-020-1751	5/8" INT TOOTH WASHER	72	400-06-416-0001	GASKET
21	422-03-072-0001	PLATE	73	537-85-004-0001	LATCH W/BUSH & NUT
22	422-04-014-0037	SPLITTER BRACKET	74	422-04-752-0175	WARNING LABEL
23	904-01-031-2934	1/4" FLAT WASHER	75	422-35-060-0001	WRENCH HOOK
24	901-03-010-0230	1/4-20 X 2" HEX SOC HD SCREW	76	422-04-026-0003	DUST CHUTE (WHITE)
25	901-03-010-0755	1/4-20 X 3/4" HEX SOC HD SCREW	77	904-10-031-2097	WASHER
*	34-895	MITER GAGE, CONST OF:	78	901-03-010-1487	7/16-20 X 3/4" HEX SOC HD SCREW
26	422-02-074-0001	HOLE PLUG	79	438-01-011-0065	PLUG
27	422-02-060-0003	HANDLE	80	438-01-011-0074	HOLE PLUG - 2" DIA
28	904-07-010-5555	1/4" FIBER WASHER	81	901-11-020-0834	5/16-18 X 3/4" CARRIAGE HD SCR
29	422-01-355-0004	MITER GAGE BODY, INCL:	85	422-04-305-0001	SUB BASE
30	901-04-150-1181	1/4-28 X 3/16" HEX SOC SET SCREW	86	904-01-010-1620	FLAT WASHER
31	901-04-150-9428	#08-32 X 1/2" HEX SOC SET SCREW	87	904-02-010-1703	5/16" LOCK WASHER
32	422-04-075-0002	POINTER	88	902-02-040-1303	5/16-18 SQUARE NUT
33	422-04-004-0001	BAR, INCL:	89	901-05-213-1498	#10 X 1/2" HEX WASHER HD SCREW
34	422-01-088-0004	STOP LINK	90	422-04-014-0034	BRACKET
35	901-04-150-1181	1/4-28 X 3/16" HEX SOC SET SCREW	91	422-35-014-0001	MITER GAGE HOLDER
36	422-04-072-0001	PLATE	92	901-05-213-1498	#10 X 1/2" HEX WASHER HD SCREW
37	901-02-030-5750	1/4-28 X 5/16" FLAT HD SCREW	95	955-03-010-0001	1/8" ALLEN WRENCH
38	422-01-112-0001	SCREW	96	955-03-010-2155	5/64" ALLEN WRENCH
40	43-349	EXTENSION WING, INCL:			
41	901-01-060-9964	7/16-20 X 1 1/4" HEX HD SCREW	*	NOT SHOWN ASSEMBLED	
42	904-10-031-2097	WASHER	**	NOT SHOWN	
43	438-01-011-0021	INSULATOR			
45	901-03-033-1046	5/16-18 X 1" FLAT HD SCREW			

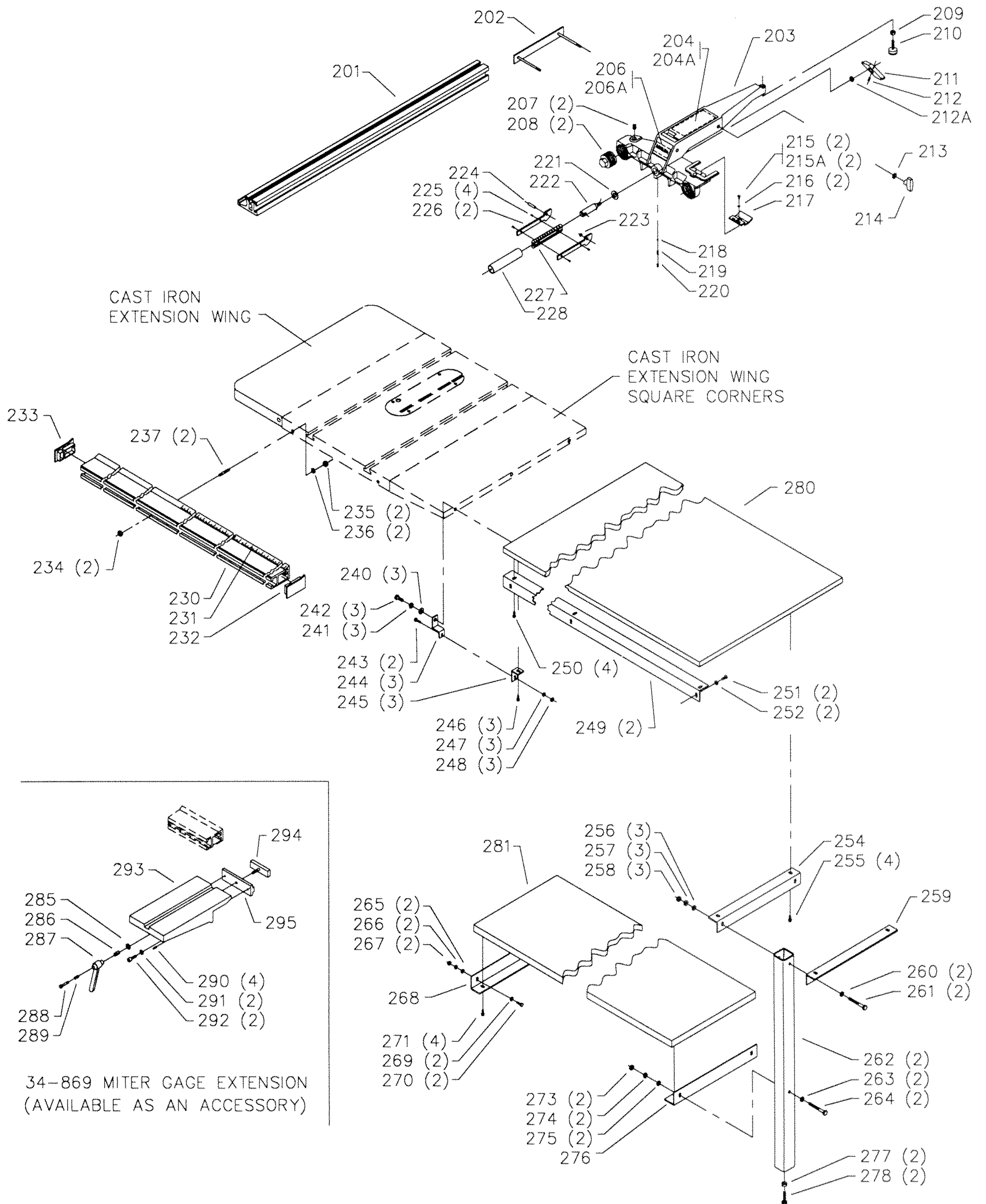


REPLACEMENT PARTS

REF NO	PART NUMBER	DESCRIPTION	REF NO	PART NUMBER	DESCRIPTION
*	422-04-314-5003	ARBOR BRACKET, CONST OF:	*	422-04-406-5002	RAISING SHAFT ASSY, CONST OF:
101	902-01-200-9848	ARBOR NUT - LH	150	422-04-074-0001	PLUG
102	422-04-103-5001	FLANGE	151	422-04-412-0009	LOCK KNOB
103	422-04-303-0003	ARBOR & FLANGE	152	904-01-021-3577	3/4" FIBER WASHER
104	927-03-020-2660	1 1/2" KEY	153	905-01-010-2706	3/16" X 1" SPRING PIN
105	1086894	BALL BEARING	154	422-04-406-0001	SHAFT W/WORM, INCL:
106	928-06-020-7382	LOAD SPRING	155	902-01-210-1036	3/4-16 LOCK NUT
107	422-04-104-0002	SPACER	156	434-01-404-0001	COLLAR, INCL:
108	926-03-991-2328	ARBOR PULLEY	157	901-04-190-0201	5/16-18 X 5/16" HEX SOC SET SCREW
109	0908653	5/16-18 X 3/8" HEX SOC HD SCREW	158	927-03-010-2650	1 3/8" KEY
110	902-07-020-7176	BEARING CLOSURE NUT	159	901-01-060-5769	5/16-24 X 1" HEX HD SCREW
111	904-05-010-6664	LOCK WASHER	160	902-01-020-1228	5/16-24 JAM NUT
112	902-01-200-9847	SPECIAL NUT	161	905-01-010-2734	5/16" X 1" SPRING PIN
113	422-04-314-5002	ARBOR BRACKET. INCL:	162	904-02-020-1704	3/8" LOCK WASHER
114	904-02-020-1704	3/8" LOCK WASHER	163	901-03-010-0775	3/8-16 X 1" HEX SOC HD SCREW
115	901-01-060-3102	3/8-16 X 1 3/4" HEX HD SCREW	164	422-04-395-5001	FRONT TRUNNION, INCL:
116	904-15-101-7147	INT RET RING	165	920-75-011-3935	BUSHING
117	927-03-010-2653	1 15/16" KEY	166	422-04-400-0005	HANDWHEEL, INCL:
118	422-04-314-5004	MOTOR BRACKET W/SHAFT, INCL:	167	901-04-190-0201	5/16-18 X 5/16" HEX SOC SET SCREW
119	928-06-011-4128	1 1/4" WAVE WASHER	168	904-07-010-5569	3/4" FIBER WASHER
120	905-01-010-5072	1/4" X 2" SPRING PIN	169	901-03-010-0750	5/16-18 X 1" HEX SOC HD SCREW
121	927-03-010-2657	2.937" KEY	170	422-04-031-0015	COVER PLATE
125	49-124	V-BELTS (MATCHED SET OF THREE)	171	422-04-014-5001	FRONT BRACKET
126	41-644	MOTOR PULLEY, INCL:	172	901-01-060-0682	3/8-24 X 1 1/2" HEX HD SCREW
127	0908653	5/16-18 X 3/8" HEX SOC HD SCREW	173	904-02-020-1704	3/8" LOCK WASHER
130	904-10-031-2097	WASHER	174	902-01-010-1207	3/8-24 HEX NUT
131	901-01-060-0664	7/16-20 X 1" HEX HD SCREW	175	927-03-010-2650	1 3/8" KEY
132	422-04-071-5001	STEEL PIN	176	422-04-406-5001	TILT SHAFT W/WORM, INCL:
133	422-04-079-5001	SPRING CLIP	177	904-10-031-4509	COLLAR
134	422-04-036-5001	DEFLECTOR	178	904-01-021-3577	3/4" FIBER WASHER
135	422-04-104-5005	SLEEVE	179	905-01-010-2706	3/16" X 1" SPRING PIN
136	901-01-060-0613	5/16-18 X 1 3/4" HEX HD SCREW	180	422-04-074-0001	PLUG
137	422-04-102-5002	YOKE	181	422-04-412-0009	LOCK KNOB
138	422-04-014-0042	BRACKET	182	422-04-055-0006	GUIDE BLOCK
139	901-03-010-0775	3/8-16 X 1" HEX SOC HD SCREW	183	904-10-031-2097	WASHER
141	904-02-020-1704	3/8" LOCK WASHER	184	901-01-060-0681	7/16-20 X 1 1/2" HEX HD SCREW
142	901-01-060-0682	3/8-24 X 1 1/2" HEX HD SCREW	185	422-04-014-2008	POINTER BRACKET
143	902-01-010-1207	3/8-24 HEX NUT	186	0919714	#08-32 X 2" FILL HD SCREW
144	905-01-010-2734	5/16" X 1" SPRING PIN	187	904-07-010-5569	3/4" FIBER WASHER
145	422-04-395-5002	REAR TRUNNION, INCL:	188	422-04-400-0005	HANDWHEEL, INCL:
146	920-75-011-3934	BEARING	189	901-04-190-0201	5/16-18 X 5/16" HEX SOC SET SCREW
			190	422-04-075-0002	POINTER
			191	901-06-110-3036	1/4-20 X 3/8" ROUND HD SCREW
			**	438-01-004-0054	CABLE TIE (See Service Note A)
			195	422-39-101-0001	WRENCH - 7/8 X 1/2"
			196	955-01-050-1472	WRENCH
			*	NOT SHOWN ASSEMBLED	
			**	NOT SHOWN	

SERVICE NOTES:

A - Used to secure motor and switch cords. See owners manual for details.



34-869 MITER GAGE EXTENSION
(AVAILABLE AS AN ACCESSORY)

REPLACEMENT PARTS

REF NO	PART NUMBER	DESCRIPTION	REF NO	PART NUMBER	DESCRIPTION
*	36-928	52" UNIFENCE ASSY (WHITE), CONST OF:	248	902-01-120-1034	1/4-20 HEX NUT
201	34-894	43" FENCE	249	422-27-089-0011	TABLE SUPPORT (WHITE)
202	400-06-327-0001	CLAMP ASSY	250	901-25-043-1791	#08-8 X 13/16" HEX WASHER HD SCR
203	400-06-312-0004	FENCE BODY ASSY, INCL:	251	901-01-060-0612	1/4-20 X 5/8" HEX HD SCREW
204	422-27-754-0009	LABEL - 7 3/8 X 2 1/2" (Current Models Only)	252	904-01-010-1614	FLAT WASHER
204A	422-27-754-0003	LABEL - 6 7/16 X 2 9/16" (Early Models Only)	254	422-27-014-0005	BRACKET (WHITE)
206	422-27-754-0007	LABEL - 2 3/4 X 2 1/2" (Current Models Only)	255	901-25-043-1791	#08-8 X 13/16" HEX WASHER HD SCR
206A	422-27-754-0004	LABEL - 1 1/2 X 2 9/16" (Early Models Only)	256	904-01-010-1620	FLAT WASHER
207	422-39-112-0005	LEVELING SCREW	257	904-02-010-1703	5/16" LOCK WASHER
208	422-39-048-0001	ADJUSTMENT PLUG	258	902-01-010-1300	5/16-18 HEX NUT
209	902-01-010-1300	5/16-18 HEX NUT	259	422-27-014-0005	BRACKET (WHITE)
210	422-27-048-0001	REAR SUPPORT FOOT	260	904-01-010-1620	FLAT WASHER
211	422-27-068-0003	LOCKING LUG	261	901-01-060-5759	5/16-18 X 2 3/4" HEX HD SCREW
212	905-01-010-2702	1/4" X 5/8" SPRING PIN	262	422-27-366-0003	LEG ASSY (WHITE)
212A	908-25-013-1808	O-RING (Current Models Only)	263	904-01-010-1620	FLAT WASHER
213	904-01-010-1620	FLAT WASHER	264	901-01-060-5759	5/16-18 X 2 3/4" HEX HD SCREW
214	424-12-060-0005	KNOB	265	904-01-010-1614	FLAT WASHER
215	901-02-443-1812	#08-32 X 1/2" PAN HD SCREW (Current Models Only)	266	904-02-020-1702	1/4" LOCK WASHER
215A	901-03-043-1713	#08-32 X 3/8" BUTTON HD SCREW (Early Models Only)	267	902-01-120-1034	1/4-20 HEX NUT
216	904-01-013-1738	3/16" FLAT WASHER	268	422-27-014-0005	BRACKET (WHITE)
217	400-06-375-0002	CURSOR	269	904-01-010-1614	FLAT WASHER
218	921-01-110-0001	BALL	270	901-01-060-0612	1/4-20 X 5/8" HEX HD SCREW
219	928-01-250-0001	SPRING	271	901-25-043-1791	#08-8 X 13/16" HEX WASHER HD SCR
220	901-04-150-9440	1/4-20 X 1/2" HEX SOC SET SCREW	273	902-01-010-1300	5/16-18 HEX NUT
221	422-27-104-0002	THRUST WASHER	274	904-02-010-1703	5/16" LOCK WASHER
222	422-39-106-0002	SHAFT	275	904-01-010-1620	FLAT WASHER
223	908-25-013-1756	O-RING	276	422-27-014-0005	BRACKET (WHITE)
224	905-01-103-1370	5/16" X 1 1/4" SPRING PIN	277	902-01-020-5433	3/8-16 JAM NUT
225	901-05-163-1229	#10-16 X 1/2" PAN HD SCREW	278	901-09-131-5295	LEVELING SCREW
226	422-39-019-0001	CAM HANDLE	AVAILABLE AS ACCESSORIES		
227	422-39-138-0002	HANDLE	*	36-930	AUXILLARY TABLE & SHELF, CONST.
228	422-39-105-0001	GRIP	280	422-27-091-0011	TABLE
230	36-907	52" UNIFENCE RAIL, INCL:	281	422-27-091-0012	SHELF
231	400-06-432-0001	SCALE KIT (See Service Note B)	285	34-869	MITER GAGE EXTENSION, CONST OF:
232	422-27-020-0002	END CAP - RH	285	1340931	WASHER
233	422-27-020-0001	END CAP - LH	286	1340932	SPECIAL SCREW
234	902-01-010-1207	3/8-24 HEX NUT	287	1340933	HANDLE
235	902-01-020-5433	3/8-16 JAM NUT	288	1340935	SPECIAL SCREW
236	904-01-010-1615	FLAT WASHER	289	1340934	SPRING
237	422-27-111-0003	STUD	290	1246010	(DIN 913) M8 X 16MM HEX SOC SET SCR
240	904-01-010-1638	FLAT WASHER	291	904-01-010-1605	3/8" FLAT WASHER
241	904-02-010-1716	1/4" LOCK WASHER	292	1246074	(DIN 912) M10 X 30MM HEX SOC HD SCR
242	901-01-060-0680	7/16-20 X 3/4" HEX HD SCREW	293	1340926	TABLE
243	901-11-020-0821	1/4-20 X 3/4" CARRIAGE HD SCREW	294	1340928	ANCHOR BLOCK
244	422-27-014-0003	ADAPTER	295	1340927	ADJUSTING BLOCK
245	422-27-089-0007	ANGLE BRACKET	**	36-910	X-LONG UNIFENCE RAIL (96" CAPACITY)
246	901-25-043-1791	#08-8 X 13/16" HEX WASHER HD SCR	*	NOT SHOWN ASSEMBLED	
247	904-01-010-1614	FLAT WASHER	**	NOT SHOWN	

SERVICE NOTES:

B - 96" Scale is available under Part Number 400-06-432-0005.

STANDARD SAFETY EQUIPMENT

In order to promote tool safety, Delta International Machinery Corp. strictly enforces the policy of repairing or replacing any damaged or missing standard safety equipment on machines presented to Delta Authorized Service Center for service/repairs. Any product which is presented to a Delta Authorized Service Center for repairs which contains missing or damaged standard safety equipment will have that equipment repaired or replaced and the customer will be charged for any such service/repairs. Customers can avoid such charges only if the missing safety component is supplied to the service center at the time of repair.

This parts list is provided to aid in obtaining service parts. Copies of the instruction and maintenance literature can be obtained through the Delta Technical Publications Department or through your local service outlet.