

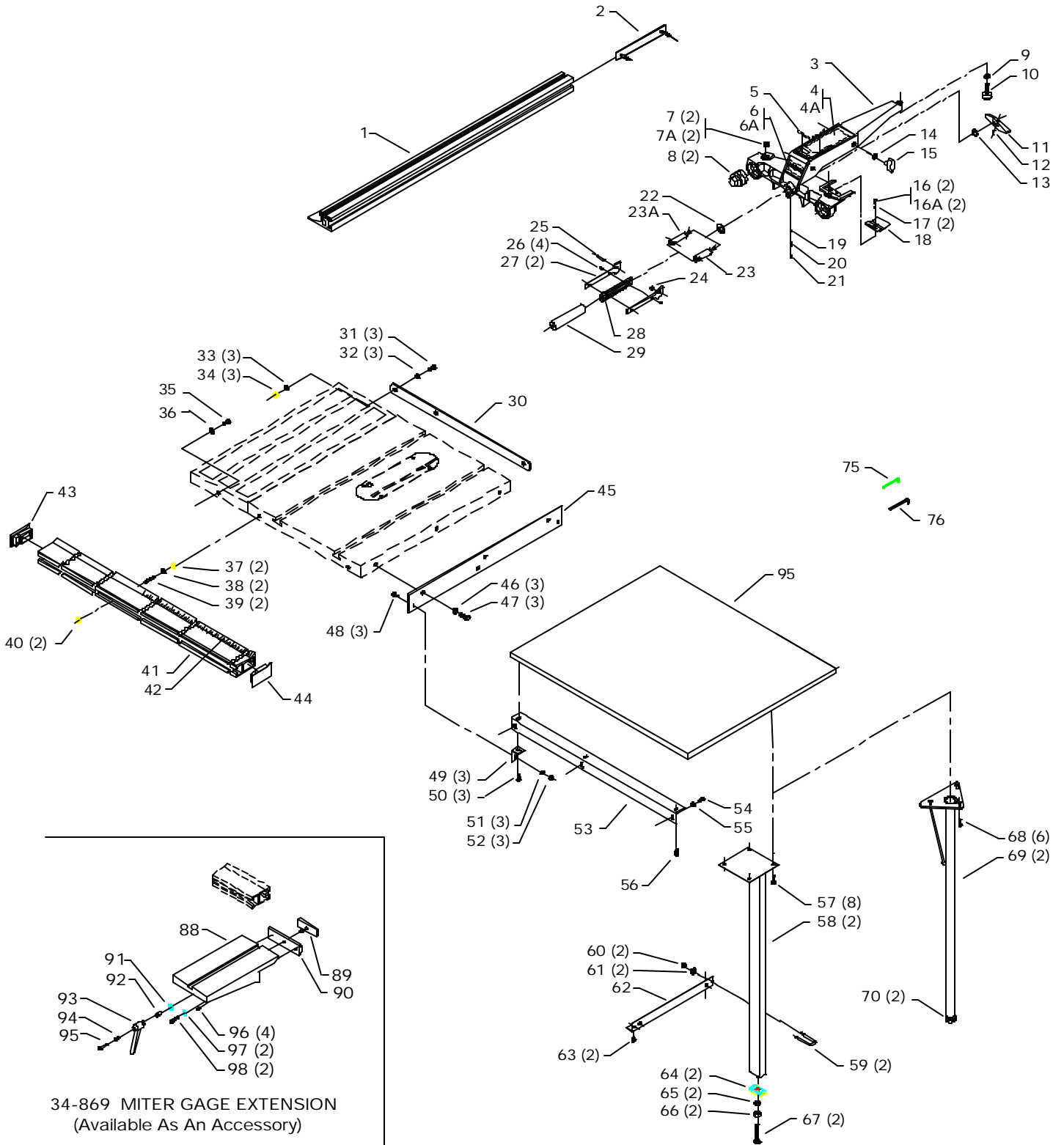


# 36-905 30" UNIFENCE W/RAIL

# CS-4L-2A

PART NO. 422-27-655-0036

Revised 04/19/1999



# REPLACEMENT PARTS

Ref.	No.	Part No.	Description	Ref.	No.	Part No.	Description
*		36-905	30In Unifence, Const Of:	40		902-01-010-1207	3/8-24 HEX NUT
1		34-916	33 IN FENCE	41		422-27-055-0005	FRONT GUIDE RAIL, INCL:
2		400-06-327-0001	CLAMP ASSY	42		400-06-432-0001	SCALE KIT (SEE A)
3		400-06-312-0002	FENCE BODY ASSEMBLY, INCL:	43		422-27-020-0001	END CAP-LH
4		422-27-754-0009	LABEL (CMO)	44		422-27-020-0002	END CAP-RH
4A		422-27-754-0003	LABEL (EMO)	45		422-27-001-0001	ADAPTOR
5		422-27-079-0004	MAGNETIC RETAINER (EMO)	46		904-02-010-1716	7/16" LOCK WASHER
6		422-27-754-0007	LABEL (CMO)	47		901-01-060-0664	7/16-20 X 1" HEX HD SCREW
6A		422-27-754-0004	LABEL (EMO)	48		901-11-020-0821	1/4-20 X 3/4" CARRIAGE HD SCREW
7		422-39-112-0005	LEVELING SCREW (CMO)	49		422-27-089-0007	ANGLE BRACKET
7A		422-27-112-0004	NYLOC SET SCREW (EMO)	50		901-06-223-1380	#14 X 3/4" HEX WASHER HD SCREW
8		422-39-048-0001	ADJUSTMENT PLUG	51		904-01-010-1614	FLAT WASHER
9		902-01-010-1300	5/16-18 HEX NUT	52		902-01-120-1034	1/4-20 HEX NUT
10		422-27-048-0001	REAR SUPPORT FOOT	53		422-27-089-0008	TABLE SUPPORT
11		422-27-068-0003	LOCKING LUG	54		901-01-060-0623	1/4-20 X 1" HEX HD SCREW
12		905-01-010-2702	1/4" X 5/8" SPRING PIN	55		904-01-010-1614	FLAT WASHER
13		908-25-013-1808	O-RING (CMO)	56		901-06-223-1380	#14 X 3/4" HEX WASHER HD SCREW
14		904-01-010-1620	FLAT WASHER	57		901-06-223-1380	#14 X 3/4" HEX WASHER HD SCREW (CMO)
15		424-12-060-0005	KNOB	58		422-39-366-0001	LEG ASSY (CMO)
16		901-02-443-1812	#8-32 X 1/2" PAN HD SCR (CMO)	59		422-39-112-0006	U-BOLT (CMO)
16A		901-03-043-1713	#08-32 X 3/8" BUTTON HD SCREW	60		902-01-120-1034	1/4-20 HEX NUT (CMO)
17		904-01-013-1738	3/16" FLAT WASHER	61		904-01-010-1614	FLAT WASHER (CMO)
18		400-06-375-0002	CURSORS	62		422-39-089-0019	SHELF SUPPORT (CMO)
19		921-01-110-0001	BALL	63		901-06-223-1380	#14 X 3/4" HEX WASHER HD SCREW (CMO)
20		928-01-250-0001	SPRING	64		422-39-001-0008	LEG ADAPTER (CMO)
21		901-04-150-9440	1/4-20 X 1/2" HEX SOC SET SCREW	65		904-01-010-1615	FLAT WASHER (CMO)
22		422-27-104-0002	THRUST WASHER	66		902-01-020-5433	3/8-16 JAM NUT (CMO)
23		422-39-106-0002	SHAFT (CMO, SEE B)	67		901-09-131-5295	LEVELING SCREW (CMO)
23A		422-39-106-0001	SHAFT (EMO, SEE B)	68		901-06-223-1380	#14 X 3/4" HEX WASHER HD SCREW (EMO)
24		908-25-013-1756	O-RING (CMO, SEE B)	69		422-27-066-0001	LEG, INCL: (EMO)
25		905-01-103-1370	5/16" X 1 1/4" SPRING PIN	70		422-27-412-0001	FOOT ASSY (EMO)
26		901-05-163-1229	#10-16 X 1/2" PAN HD SCREW	75		955-03-013-1712	3/32" HEX WRENCH (EMO)
27		422-39-019-0001	CAM HANDLE	76		955-03-010-0006	1/4" HEX WRENCH (EMO)
28		422-39-138-0002	HANDLE	*		34-869	MITER GAGE EXT. CONST OF:
29		422-39-105-0001	GRIP	80		1340926	TABLE
30		422-27-089-0009	EXT WING SUPPORT	81		1340931	WASHER
31		901-01-060-0642	3/8-16 X 1" HEX HD SCREW	82		1340932	SPECIAL SCREW
32		904-02-020-1704	3/8" LOCK WASHER	83		1340933	HANDLE
33		904-01-010-1606	3/8" FLAT WASHER	84		1340934	SPRING
34		902-01-010-5900	3/8-16 JAM NUT	85		1340935	SPECIAL SCREW
35		901-01-060-0623	1/4-20 X 1" HEX HD SCREW	86		904-01-010-1605	3/8" FLAT WASHER
36		904-01-010-1614	FLAT WASHER	87		1246074	(DIN 912) M10 X 30MM HEX SOC HD SCREW
37		902-01-010-5900	3/8-16 JAM NUT	88		1246010	(DIN 913) M8 X 16MM HEX SOC SET SCREW
38		904-01-010-1615	FLAT WASHER	89		1340927	ADJUSTING BLOCK
39		422-27-111-0003	STUD	90		1340928	ANCHOR BLOCK
				95		34-914	TABLE

\* NOT SHOWN ASSEMBLED

## SERVICE NOTES:

A – Scale is provided oversized and must be cut to proper length.

B – Current shaft must be used in conjunction with O-Ring (Ref. No. 24). Early shaft did not require O-Ring

## STANDARD SAFETY EQUIPMENT

In order to promote tool safety, Delta Machinery strictly enforces the policy of repairing or replacing any damaged or missing standard safety equipment on machines presented to Delta Authorized Service Centers for service/repairs. Any product that is presented to a Delta Authorized Service Centers for repairs which contains missing or damaged standard safety equipment will have that equipment repaired or replaced and the customer will be charged for any such service/repairs. Customers can avoid such charges only if the missing safety component is supplied to the service center at the time of repair.

*This parts list is provided to aid in obtaining service parts. Copies of the instruction and maintenance literature can be obtained through the Delta Technical Publications Department or through your service outlet.*