

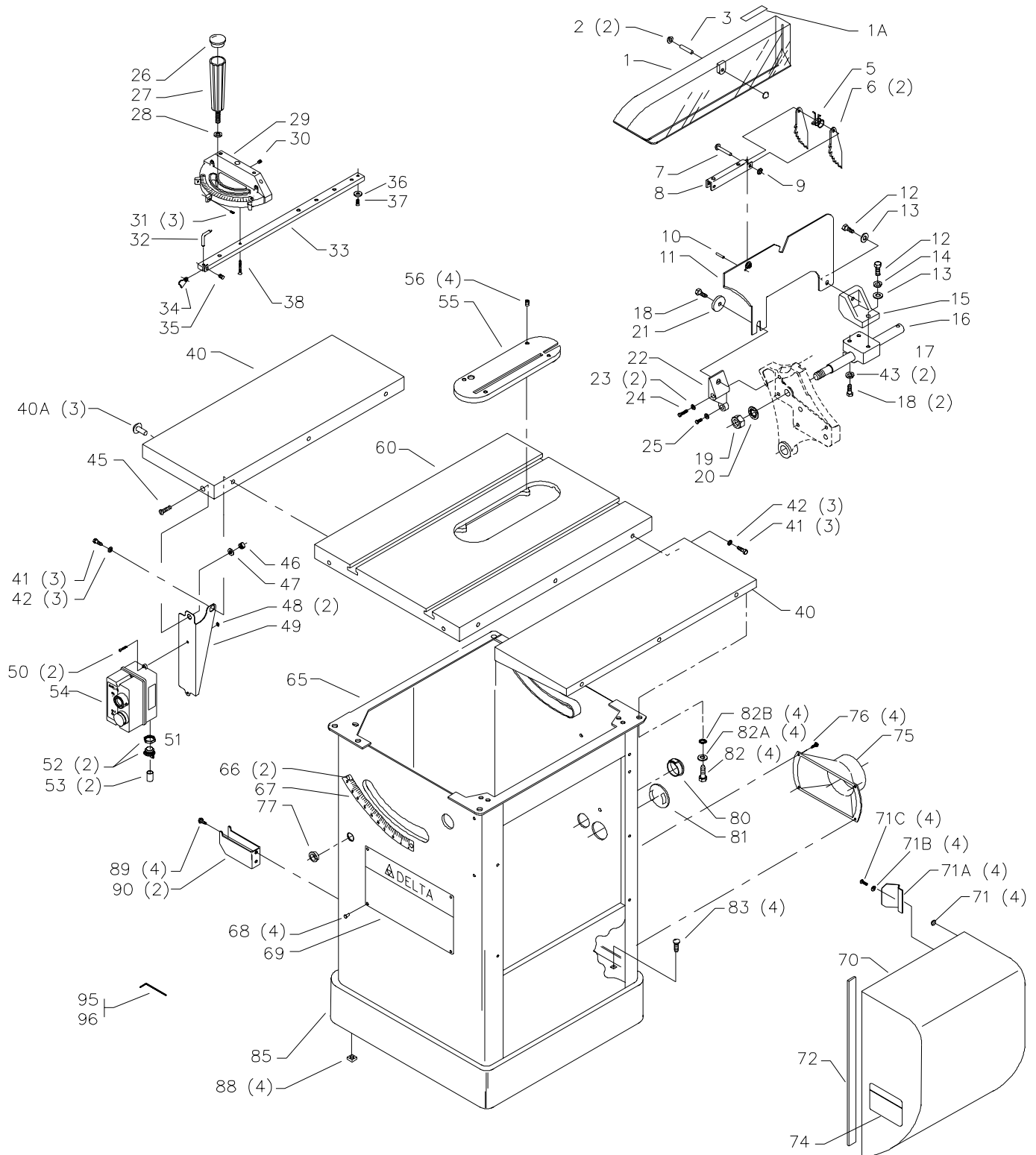


36-841, 36-843
10" TILTING ARBOR UNISAW®
LIMITED EDITION
RIGHT TILT

CS-4K-14-4

PARTS LIST NO. 422-04-651-0065

Dated 07/22/02

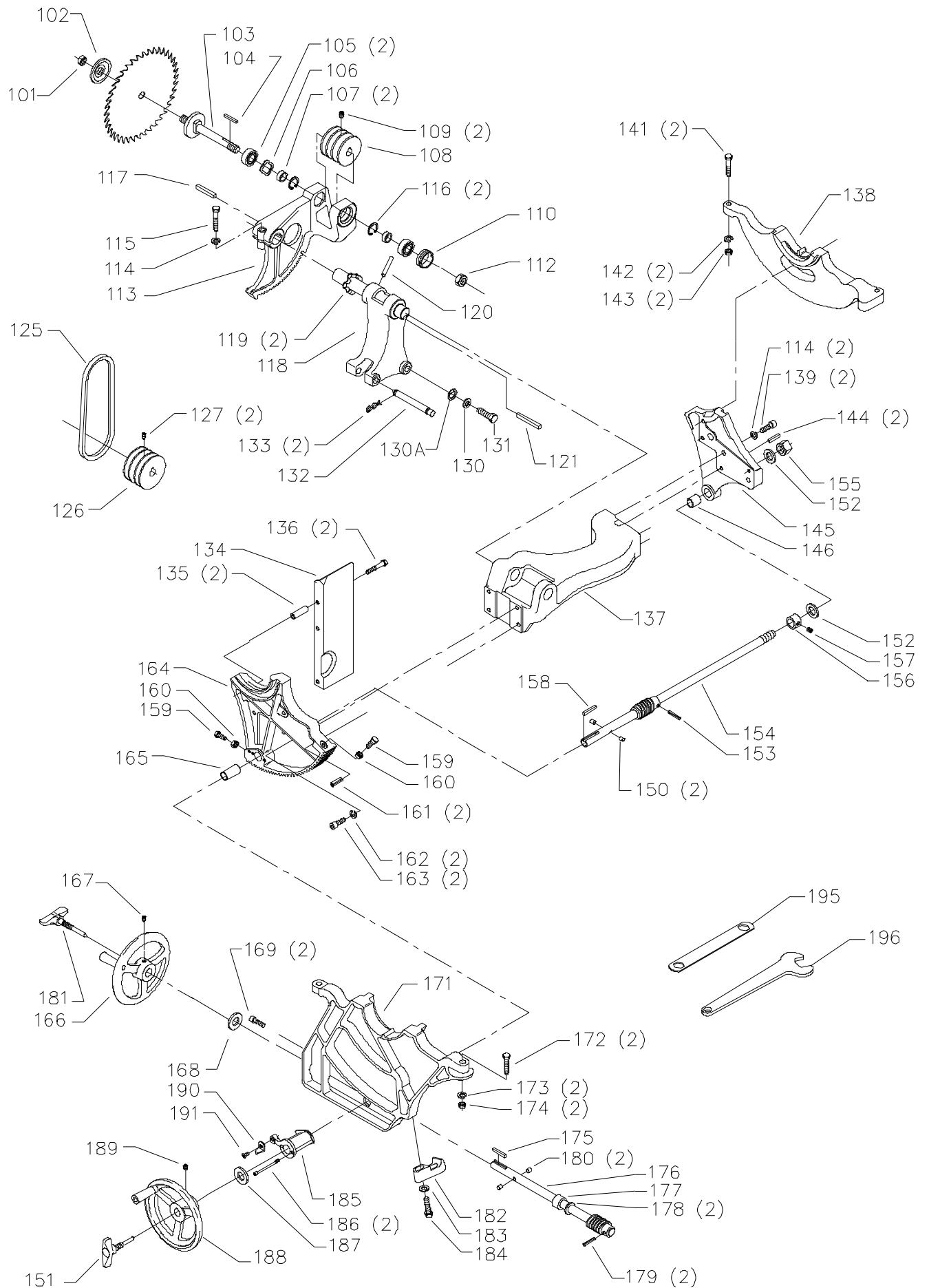


REPLACEMENT PARTS

Ref.	No.	Part No.	Description	Ref.	No.	Part No.	Description
*		34-639	BLADE GUARD COMPLETE, CONST OF:	48		902-01-293-1513	10-32 KEPS NUT
*		1086935	BLADE GUARD, CONST OF:	49		422-40-014-0007	MOUNTING BRACKET - GPE
1		1086334	SEE THRU GUARD	50		901-02-453-1123	10-32 X 1/2" PAN HD SCREW
1A		422-04-754-0004	LABEL	51		438-01-016-0199	STARTER - GPE,1PH,230V, INCL:
2		1086388	PUSH NUT CAP	52		438-01-004-0007	CORD CLAMP
3		1087811	PIN	53		438-01-011-0054	INSULATOR SLEEVE
5		1086353	SPRING	54	n	438-01-016-0200	COVER
6		422-16-047-0001	KICK BACK FINGER	55		34-154	STANDARD INSERT, INCL:
7		422-04-071-0007	PIN	56		901-04-461-5297	1/4-28 X 3/8" HEX SOC SET SCREW
8		1086337	PIVOT BRACKET	60		422-04-391-0003	TABLE
9		1086387	PUSH NUT	65		422-04-318-0018	CABINET ASSY , INCL:
10		905-01-010-6729	5/32" X 11/16" SPRING PIN	66		1087794	RIVET
11		422-04-086-0002	SPLITTER W/BUSHING	67		422-04-132-0004	TILT SCALE
12		901-01-060-0649	5/16-18 X 1" HEX HD SCREW	68		1087794	RIVET
13		904-01-010-1620	FLAT WASHER	69		422-04-137-0011	NAMEPLATE
14		904-02-010-1703	5/16" LOCK WASHER	70		422-04-331-0014	MOTOR COVER , INCL:
15		422-04-014-0018	BRACKET	71		410-09-016-0004	BUMPERS - EMO
16		422-04-089-0003	SUPPORT ROD	71A		422-04-122-0005	SPRING CLIP 1 5/8" LONG - CMO
17		422-04-014-0019	BRACKET			422-04-122-0004	SPRING CLIP 1 1/4" Long - EMO
18		901-01-060-0649	5/16-18 X 1" HEX HD SCREW	71B		904-01-013-1868	#10 FLAT WASHER
19		902-01-020-1226	5/8-18 JAM NUT	71C		901-02-453-1123	10-32 X 1/2" PAN HD SCREW
20		904-03-020-1751	5/8" INT TOOTH WASHER	72		400-06-416-0003	GASKET 1/2" THICK - CMO
21		422-03-072-0001	PLATE			400-06-416-0001	GASKET 1/4" THICK - EMO
22		422-04-014-0037	SPLITTER BRACKET	74		422-04-752-0184	WARNING LABEL
23		904-01-010-1620	5/16" FLAT WASHER	75		406-12-026-0001	DUST CHUTE
24		901-03-013-1698	5/16-18 X 2" HEX SOC HD SCREW	76		901-05-213-1498	#10 X 1/2" HEX WASHER HD SCREW
25		901-03-010-0757	5/16-18 X 3/4" HEX SOC HD SCREW	77		438-01-011-0021	INSULATOR
*		34-895	MITER GAGE, CONST OF:	80		438-01-011-0065	HOLE PLUG - 1.5" DIA - EMO
26		422-02-074-0001	HOLE PLUG	81		438-01-011-0074	HOLE PLUG - 2" DIA - EMO
27		422-02-060-0003	HANDLE	82		901-03-010-1487	7/16-20 X 3/4" HEX SOC HD SCREW
28		904-07-010-5555	1/4" FIBER WASHER	82A		904-10-031-2097	7/16" WASHER
29		422-01-355-0004	MITER GAGE BODY, INCL:	82B		904-03-030-1771	7/16" LOCKWASHER
30		901-04-150-1181	1/4-28 X 3/16" HEX SOC SET SCREW	83		901-11-020-0834	5/16-18 x 3/4" HEX SOC HD SCREW
31		901-04-150-9428	8-32 X 1/2" HEX SOC SET SCREW	85		422-04-305-0001	SUB BASE
32		422-01-075-0001	POINTER	88		902-01-503-1514	5/16 - 18 FLANGE NUT
33		422-04-004-0001	BAR, INCL:	89		901-05-213-1498	10 X 1/2" HEX HD SCREW
34		422-01-088-0004	STOP LINK	90		422-35-014-0002	BRACKET
35		901-04-150-1181	1/4-28 X 3/16" HEX SOC SET SCREW	95		955-03-010-0001	1/8" ALLEN WRENCH
36		422-04-072-0001	PLATE	96		955-03-010-2155	5/64" ALLEN WRENCH
37		901-02-030-5750	1/4-28 X 5/16" FLAT HD SCREW				
38		422-01-112-0001	SCREW	*			NOT SHOWN ASSEMBLED
40		36-937	EXTENSION WING, INCL:				
40A		438-01-011-0077	PLUG				
41		901-01-060-9964	7/16-20 X 1 1/4" HEX HD SCREW				
42		904-10-031-2097	7/16" WASHER				
43		904-02-010-1703	5/16" LOCK WASHER				
45		901-03-033-1046	5/16-18 X 1" FLAT HD SCREW				
46		902-01-010-1300	5/16-18 HEX NUT				
47		904-01-010-1620	5/16" FLAT WASHER				

CMO: CURRENT MODELS ONLY.

EMO: EARLY MODELS ONLY.

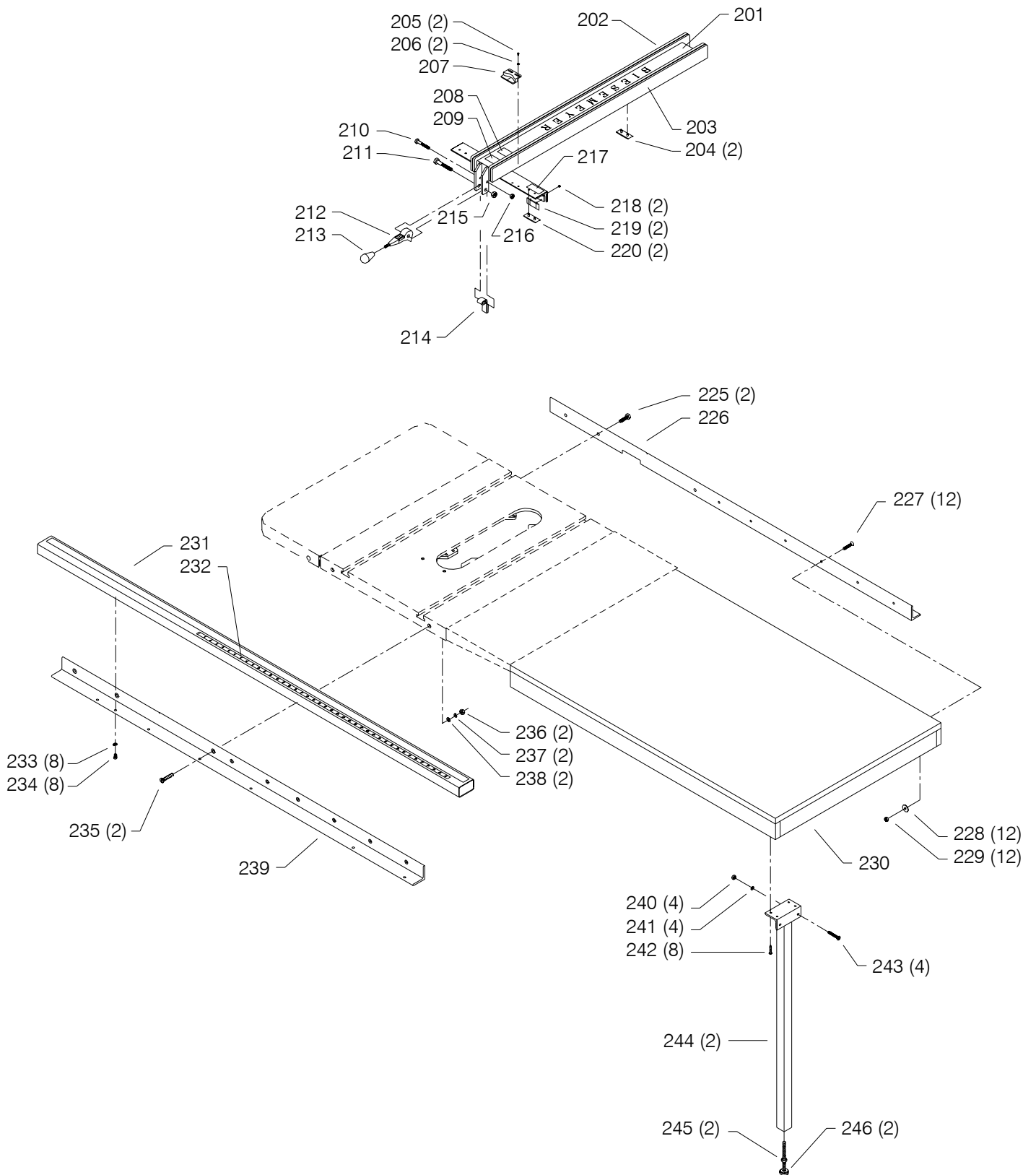


REPLACEMENT PARTS

Ref. No.	Part No.	Description	Ref. No.	Part No.	Description
*	422-04-314-5003	ARBOR BRACKET, CONST OF:	161	905-01-010-2734	5/16" X 1" SPRING PIN
101	902-01-200-9848	ARBOR NUT - LH	162	904-02-020-1704	3/8" LOCK WASHER
102	422-04-103-5001	FLANGE	163	901-03-010-0775	3/8-16 X 1" HEX SOC HD SCREW
103	422-04-303-0003	ARBOR & FLANGE	164	422-04-395-5001	FRONT TRUNNION, INCL:
104	927-03-020-2660	1 1/2" KEY	165	920-75-011-3935	BUSHING
105	1086894	BALL BEARING	166	422-04-400-0005	HANDWHEEL, INCL:
106	928-06-020-7382	LOAD SPRING	167	901-04-190-0201	5/16-18 X 5/16" HEX SOC SET SCREW
107	422-04-104-0002	SPACER	168	904-07-010-5569	3/4" FIBER WASHER
108	926-03-991-2328	ARBOR PULLEY, INCL:	169	901-03-040-8016	5/16-18 X 3/4" HEX SOC HD SCREW
109	0908653	5/16-18 X 3/8" HEX SOC HD SCREW	171	422-04-014-5001	FRONT BRACKET
110	902-07-020-7176	BEARING CLOSURE NUT	172	901-01-060-0682	3/8-24 X 1 1/2" HEX HD SCREW
112	902-01-200-9847	SPECIAL NUT	173	904-02-020-1704	3/8" LOCK WASHER
113	422-04-314-5002	ARBOR BRACKET, INCL:	174	902-01-010-1207	3/8-24 HEX NUT
114	904-02-020-1704	3/8" LOCK WASHER	175	927-03-010-2650	1 3/8" KEY
115	901-01-060-3102	3/8-16 X 1 3/4" HEX HD SCREW	176	422-04-406-5001	TILT SHAFT W/WORM, INCL:
116	904-15-101-7147	INTERNAL RETAINING RING	177	904-10-031-4509	COLLAR
117	927-03-010-2653	1 15/16" KEY	178	904-01-021-3577	3/4" FIBER WASHER
118	422-04-314-5004	MOTOR BRACKET W/SHAFT, INCL:	179	905-01-010-2706	3/16" X 1" SPRING PIN
119	928-06-011-4128	1 1/4" WAVE WASHER	180	422-04-074-0001	PLUG
120	905-01-010-5072	1/4" X 2" SPRING PIN	181	422-04-412-0009	LOCK KNOB
121	927-03-010-2657	2.937" KEY	182	422-04-055-0006	GUIDE BLOCK
125	49-124	SET OF V-BELTS	183	904-10-031-2097	7/16" FLAT WASHER
126	41-644	MOTOR PULLEY, INCL:	184	901-01-060-0681	7/16-20 X 1 1/2" HEX HD SCREW
127	0908653	5/16-18 X 3/8" HEX SOC HD SCREW	185	422-04-014-2008	POINTER BRACKET
130	904-10-031-2097	WASHER	186	0919714	8-32 X 2" FILL HD SCREW
130A	904-03-030-1771	7/16" LOCKWASHER	187	904-07-010-5569	3/4" FIBER WASHER
131	901-01-060-0664	7/16-20 X 1" HEX HD SCREW	188	422-04-400-0005	HANDWHEEL, INCL:
132	422-04-071-5001	STEEL PIN	189	901-04-190-0201	5/16-18 X 5/16" HEX SOC SET SCREW
133	422-04-079-5001	SPRING CLIP	190	422-04-075-0002	POINTER
134	422-04-036-5001	DEFLECTOR	191	901-06-110-3036	1/4-20 X 3/8" ROUND HD SCREW
135	422-04-104-5005	SLEEVE	**	438-01-004-0054	CABLE TIE (SEE NOTE A)
136	901-01-060-0613	5/16-18 X 1 3/4" HEX HD SCREW	195	422-39-101-0001	WRENCH-7/8 X 1/2"
137	422-04-102-5002	YOKE	196	955-01-050-1472	WRENCH-7/8 X 1/2"
138	422-04-014-0042	BRACKET	*		NOT SHOWN ASSEMBLED
139	901-03-010-0775	3/8-16 X 1" HEX SOC HD SCREW			
141	901-01-060-0682	3/8-24 X 1 1/2" HEX HD SCREW			
142	904-02-020-1704	3/8" LOCK WASHER			
143	902-01-010-1207	3/8-24 HEX NUT			
144	905-01-010-2734	5/16" X 1" SPRING PIN			
145	422-04-395-5002	REAR TRUNNION, INCL:			
146	920-75-011-3934	BEARING			
*	422-04-406-5002	RAISING SHAFT ASSY, CONST OF:			
150	422-04-074-0001	PLUG			
151	422-04-412-0009	LOCK KNOB			
152	904-01-021-3577	3/4" FIBER WASHER			
153	905-01-010-2706	3/16" X 1" SPRING PIN			
154	422-04-406-0001	SHAFT W/WORM, INCL:			
155	902-01-210-1036	3/4-16 LOCK NUT			
156	434-01-404-0001	COLLAR, INCL:			
157	901-04-190-0201	5/16-18 X 5/16" HEX SOC SET SCREW			
158	927-03-010-2650	1 3/8" KEY			
159	901-01-060-5769	5/16-24 X 1" HEX HD SCREW			
160	902-01-020-1228	5/16-24 JAM NUT			

NOTE A: USED TO SECURE MOTOR SWITCH CORDS, SEE INSTRUCTION MANUAL FOR DETAILS.

FOR MODEL 36-843

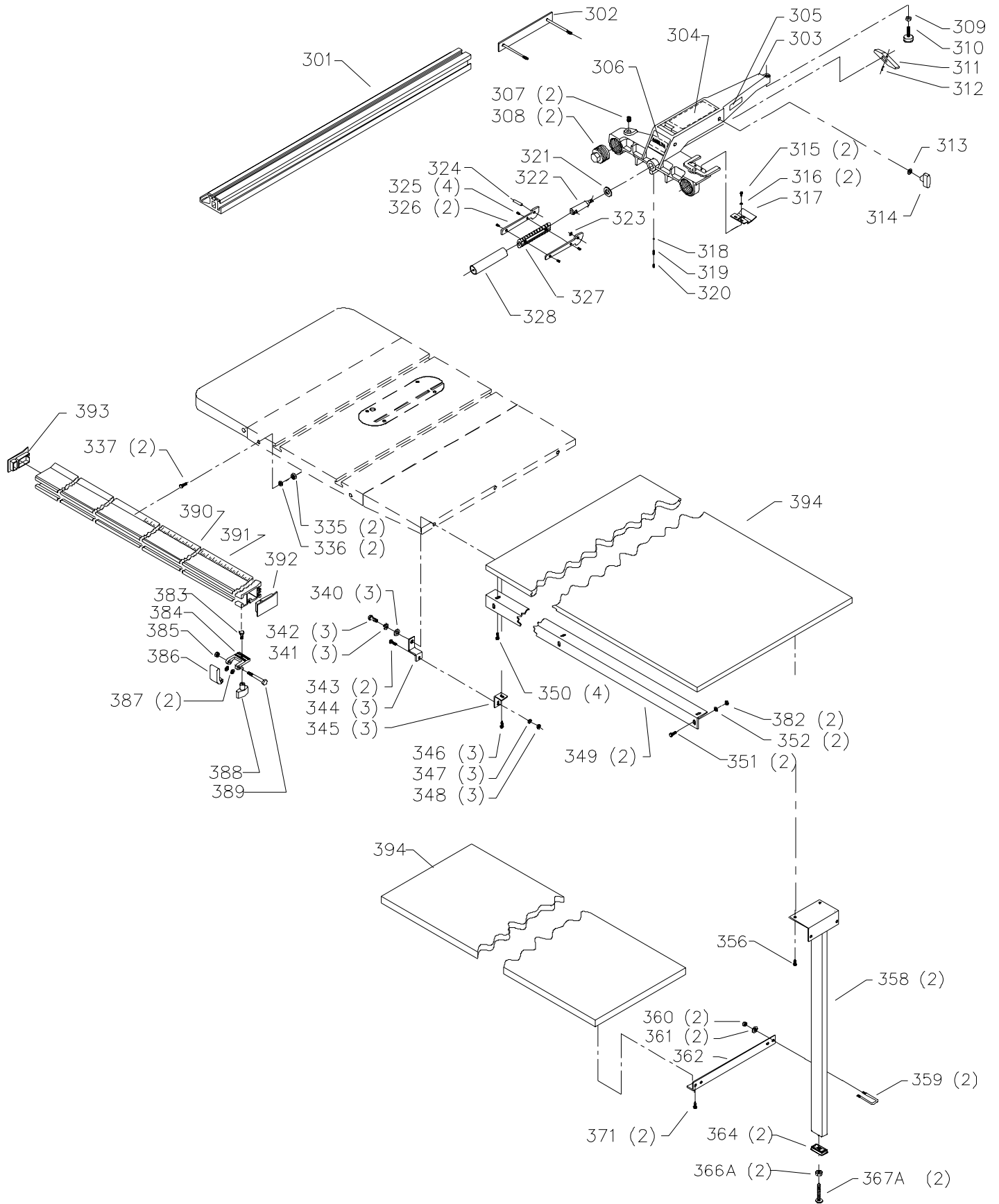


REPLACEMENT PARTS

<u>Ref.</u>	<u>Part No.</u>	<u>Description</u>
201	78-996	FENCE ASSY , INCL:
202	1359178	LEFT BOARD SERVICE KIT
203	1359179	RIGHT BOARD SERVICE KIT
204	1350019	GLIDE PAD
205	1352033	8-32 X 3/8" ROUND HD SCREW
206	1352034	FLAT WASHER
207	1352593	CURSOR
208	1350077	FLAG DECAL
209	1350078	NAMEPLATE
210	1350277	1/4-20 X 1 3/4" HEX HD SCREW
211	1350278	SPECIAL SCREW
212	1352490	CAM HANDLE
213	1350018	KNOB
214	1352492	CAM FOOT ASSY
215	1350279	3/8-16 LOCK NUT
216	1350280	1/4-20 LOCK NUT
217	1350155	DECAL
218	1350492	3/8-16 X 5/16" HEX SOC SET SCREW
219	1350051	GLIDE PAD
220	1350019	GLIDE PAD
225	1350285	3/8-24 X 1 1/4" HEX HD SCREW
226	1359181	REAR RAIL
227	1350289	1/4-20 X 1 1/2" FLAT HD SCREW
228	1350290	1/4" FLAT WASHER
229	1350284	1/4-20 HEX NUT
230	78-924	EXTENSION TABLE
231	1359180	GUIDE TUBE ASSY, INCL:
232	79-064	SCALE (SEE NOTE B)
233	1350293	1/4" LOCK WASHER
234	1350294	1/4-20 X 3/4" HEX HD SCREW
235	1352011	3/8-16 X 1 1/2" FLAT HD SCREW
236	1350291	3/8-16 HEX NUT
237	1350288	3/8" LOCK WASHER
238	1350286	FLAT WASHER
239	1359182	FRONT RAIL
240	1350284	1/4-20 HEX NUT
241	1350283	1/4" FLAT WASHER
242	1350630	8 X 5/8" PAN HD SCREW
243	1350289	1/4-20 X 1 1/2" FLAT HD SCREW
244	1352485	LEG ASSY
245	1350291	3/8-16 HEX NUT

NOTE B: SCALE IS PROVIDED OVERSIZE AND MUST BE CUT TO PROPER LENGTH.

FOR MODEL 36-841



REPLACEMENT PARTS

<u>Ref. No.</u>	<u>Part No.</u>	<u>Description</u>	<u>Ref. No.</u>	<u>Part No.</u>	<u>Description</u>
*	36-918	52" UNIFENCE ASSY , CONST OF:	349	422-27-089-0020	TABLE SUPPORT
301	34-894	43" FENCE	350	901-25-043-1791	8-8 X 13/16" HEX WASHER HD SCR
302	400-06-327-0001	CLAMP ASSY	351	901-01-060-0612	1/4-20 X 5/8" HEX HD SCREW
303	400-06-312-0005	FENCE BODY ASSY, INCL:	352	904-01-010-1614	1/4" FLAT WASHER
304	422-27-754-0012	LABEL	356	901-25-043-1791	#8 X 3/4" HEX WASHER HD SCREW
305	422-27-752-0018	LABEL	358	422-27-366-0005	LEG ASSY
306	422-27-754-0013	LABEL	359	422-27-112-0005	U-BOLT
307	422-39-112-0005	LEVELING SCREW	360	902-01-120-1034	1/4-20 HEX NUT
308	422-39-048-0001	ADJUSTMENT PLUG	361	904-01-010-1614	1/4" FLAT WASHER
309	902-01-010-1300	5/16-18 HEX NUT	362	422-27-089-0017	SHELF SUPPORT
310	422-27-048-0001	REAR SUPPORT FOOT	364	1350481	LEG ADAPTER
311	422-27-068-0003	LOCKING LUG	366A	902-01-020-5433	3/8-16 JAM NUT
312	905-01-010-2702	1/4" X 5/8" SPRING PIN	367A	901-09-131-5295	LEVELING SCREW
313	904-01-010-1620	FLAT WASHER	371	901-25-043-1791	8-10 X 3/4" HEX WASHER HD SCR
314	424-12-060-0005	KNOB	382	902-01-120-1034	NUT
315	901-02-443-1812	8/32 X 1/2 PH SCREW	*	36-899	FLIP STOP, CONST OF:
316	904-01-013-1738	3/16" FLAT WASHER	383	901-01-060-0649	5/16-18 X 1.00 HEX HEAD SCREW
317	400-06-375-0002	CURSOR	384	422-27-084-0007	BRACKET
318	921-01-110-0001	BALL	385	902-01-212-2409	1/4-20 LOCKNUT
319	928-01-250-0001	SPRING	386	422-27-088-0002	FLIP STOP
320	901-04-150-9440	1/4-20 X 1/2" HEX SOC SET SCREW	387	904-07-010-5573	1/4" FIBER WASHER
321	422-27-104-0002	THRUST WASHER	388	424-12-060-0005	KNOB 2" 5/16-18
322	422-39-106-0002	SHAFT	389	901-01-060-0622	1/4-20 X 2" HEX HEAD SCREW
323	908-25-013-1756	O-RING	390	36-904	52" UNIFENCE RAIL, INCL:
324	905-01-103-1370	5/16" X 1 1/4" SPRING PIN	391	400-06-432-0001	SCALE - FOR 52" RAIL
325	901-05-163-1229	10-16 X 1/2" PAN HD SCREW		400-06-432-0005	SCALE - FOR 96" RAIL
326	422-39-019-0001	CAM HANDLE	392	422-27-020-0004	END CAP-RH
327	422-39-138-0002	HANDLE	393	422-27-020-0003	END CAP-LH
328	422-39-105-0001	GRIP	394	34-978	AUXILIARY TABLE & SHELF
335	902-01-010-5900	3/8-16 JAM NUT	**	422-27-628-0031	RAIL MTG. HDWE. PACK
336	904-01-010-1615	3/8" FLAT WASHER	**	422-27-725-0019	TABLE SUPPORT HDWE. PACK
337	901-01-060-0642	3/8-16 X 1" HEX HD SCREW	**	422-27-628-0024	FENCE HDWE. PACK
340	904-01-010-1638	7/16" FLAT WASHER			
341	904-02-010-1716	7/16" LOCK WASHER			
342	901-01-060-0680	7/16-20 X 3/4" HEX HD SCREW			
343	901-11-020-0821	1/4-20 X 3/4" CARRIAGE HD SCREW			
344	422-27-014-0003	ADAPTER			
345	422-27-089-0007	ANGLE BRACKET			
346	901-25-043-1791	8-8 X 13/16" HEX WASHER HD SCR			
347	904-01-010-1614	1/4" FLAT WASHER			
348	902-01-120-1034	1/4-20 HEX NUT			

STANDARD SAFETY EQUIPMENT

In order to promote tool safety, Delta Machinery strictly enforces the policy of repairing or replacing any damaged or missing standard safety equipment on machines presented to Delta Authorized Service Centers for service/repairs. Any product that is presented to a Delta Authorized Service Centers for repairs which contains missing or damaged standard safety equipment will have that equipment repaired or replaced and the customer will be charged for any such service/repairs. Customers can avoid such charges only if the missing safety component is supplied to the service center at the time of repair.

This parts list is provided to aid in obtaining service parts. Copies of the instruction and maintenance literature can be obtained through the Delta Technical Publications Department or through your service outlet.