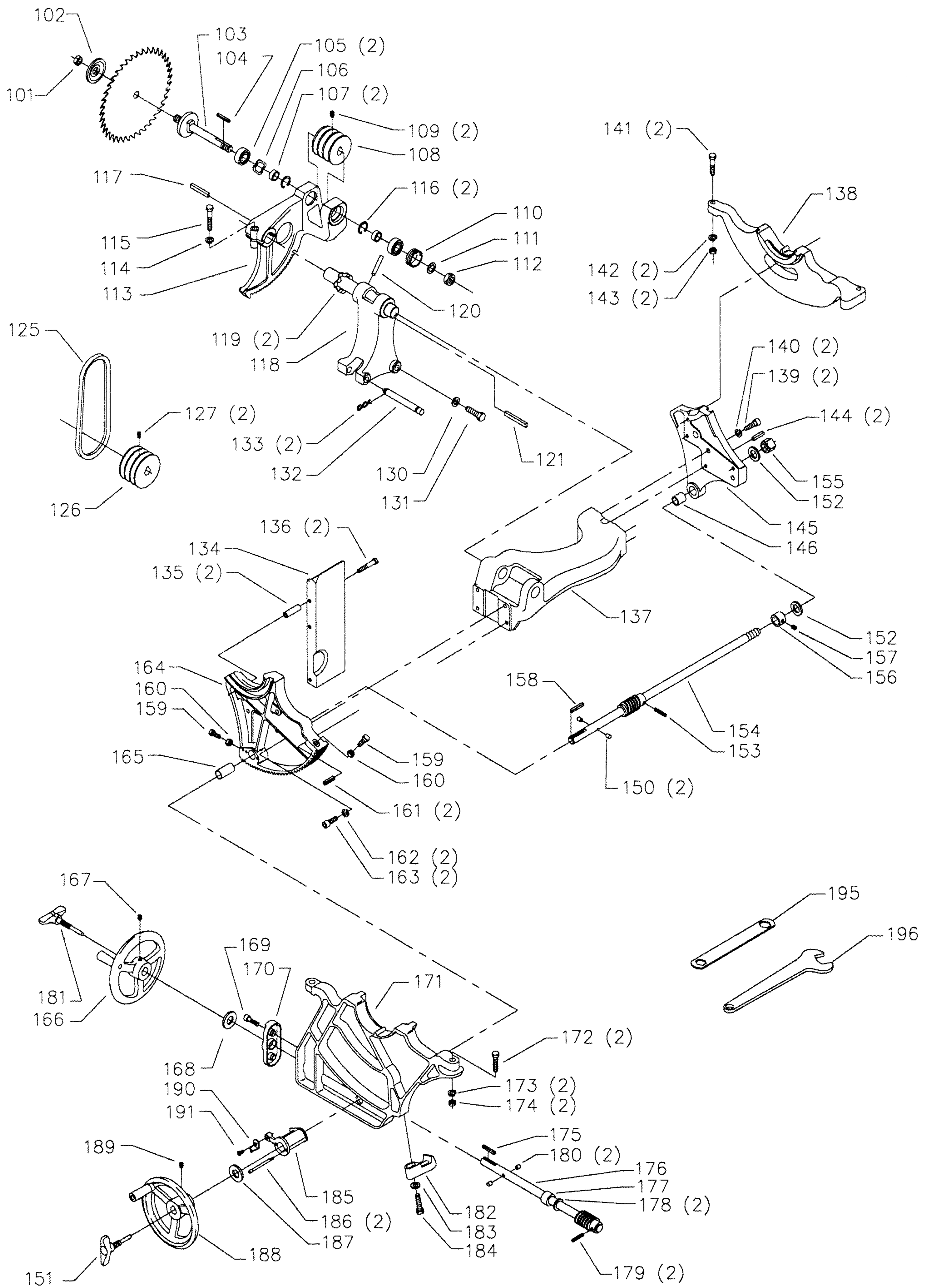


REPLACEMENT PARTS

REF NO	PART NUMBER	DESCRIPTION
1	34-154	STANDARD INSERT, INCL:
2	901-04-461-5297	1/4-28 X 3/8" HEX SOC SET SCREW
3	43-349	EXTENSION WING, INCL:
4	901-01-060-9964	7/16-20 X 1 1/4" HEX HD SCREW
5	904-10-031-2097	WASHER
6	422-04-391-0003	TABLE
10	422-04-318-0003	CABINET ASSY, INCL:
11	1087794	RIVET
12	422-04-132-0002	TILT SCALE
13	438-01-011-0021	INSULATOR
14	1087794	RIVET
15	422-04-137-0007	NAMEPLATE
16	422-04-026-0003	DUST CHUTE
17	901-05-213-1498	#10 X 1/2" HEX WASHER HD SCREW
18	36-828	HINGED MOTOR COVER, INCL:
19	901-05-213-1498	#10 X 1/2" HEX WASHER HD SCREW
20	400-06-416-0001	GASKET
21	537-85-004-0001	LATCH W/BUSHING & NUT
22	422-04-752-0175	WARNING LABEL
24	901-11-020-0834	5/16-18 X 3/4" CARRIAGE HD SCREW
25	422-35-014-0001	MITER GAGE HOLDER
26	901-05-213-1498	#10 X 1/2" HEX WASHER HD SCREW
27	422-35-060-0001	WRENCH HOOK
28	901-05-213-1498	#10 X 1/2" HEX WASHER HD SCREW
29	904-10-031-2097	WASHER
30	901-03-010-1487	7/16-20 X 3/4" HEX SOC HD SCREW
31	438-01-011-0065	PLUG
32	438-01-011-0074	HOLE PLUG - 2" DIA
33	901-05-213-1498	#10 X 1/2" HEX WASHER HD SCREW
34	422-04-014-0034	FENCE HOOK
35	422-04-305-0001	SUB BASE
36	904-01-010-1620	FLAT WASHER
37	904-02-010-1703	5/16" LOCK WASHER
38	902-02-040-1303	5/16-18 SQUARE NUT
*	34-895	MITER GAGE, CONST OF:
40	422-02-074-0001	HOLE PLUG
41	422-02-060-0003	HANDLE
42	904-07-010-5555	1/4" FIBER WASHER
43	422-01-355-0004	MITER GAGE BODY, INCL:
44	901-04-150-1181	1/4-28 X 3/16" HEX SOC SET SCREW
45	901-04-150-9428	#08-32 X 1/2" HEX SOC SET SCREW
46	422-01-075-0001	POINTER
47	422-04-004-0001	BAR, INCL:
48	422-01-088-0004	STOP LINK
49	901-04-150-1181	1/4-28 X 3/16" HEX SOC SET SCREW
50	422-01-112-0001	SCREW
51	422-04-072-0001	PLATE
52	901-02-030-5750	1/4-28 X 5/16" FLAT HD SCREW
60	955-03-010-0001	1/8" ALLEN WRENCH
61	955-03-010-2155	5/64" ALLEN WRENCH

* NOT SHOWN ASSEMBLED



REPLACEMENT PARTS

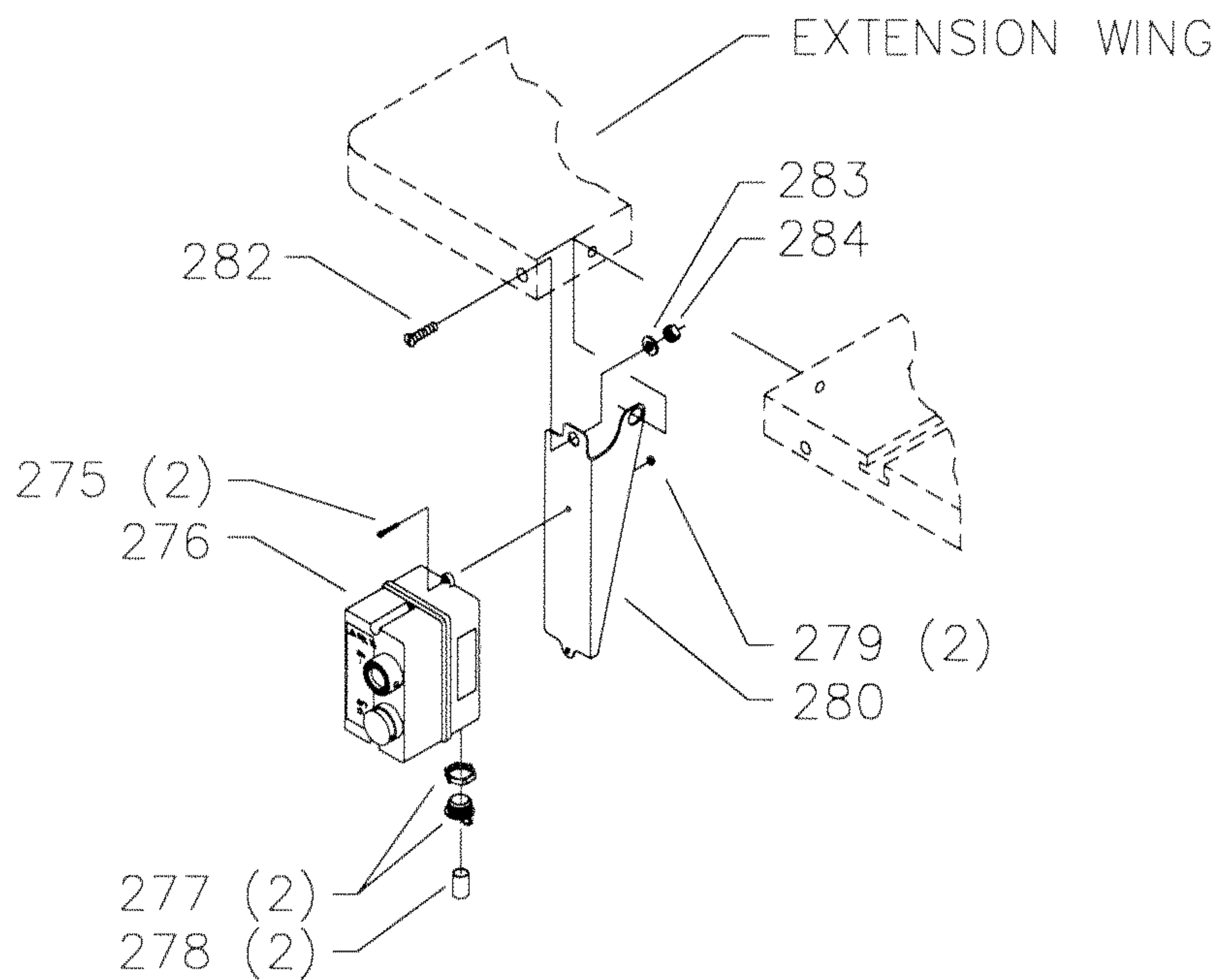
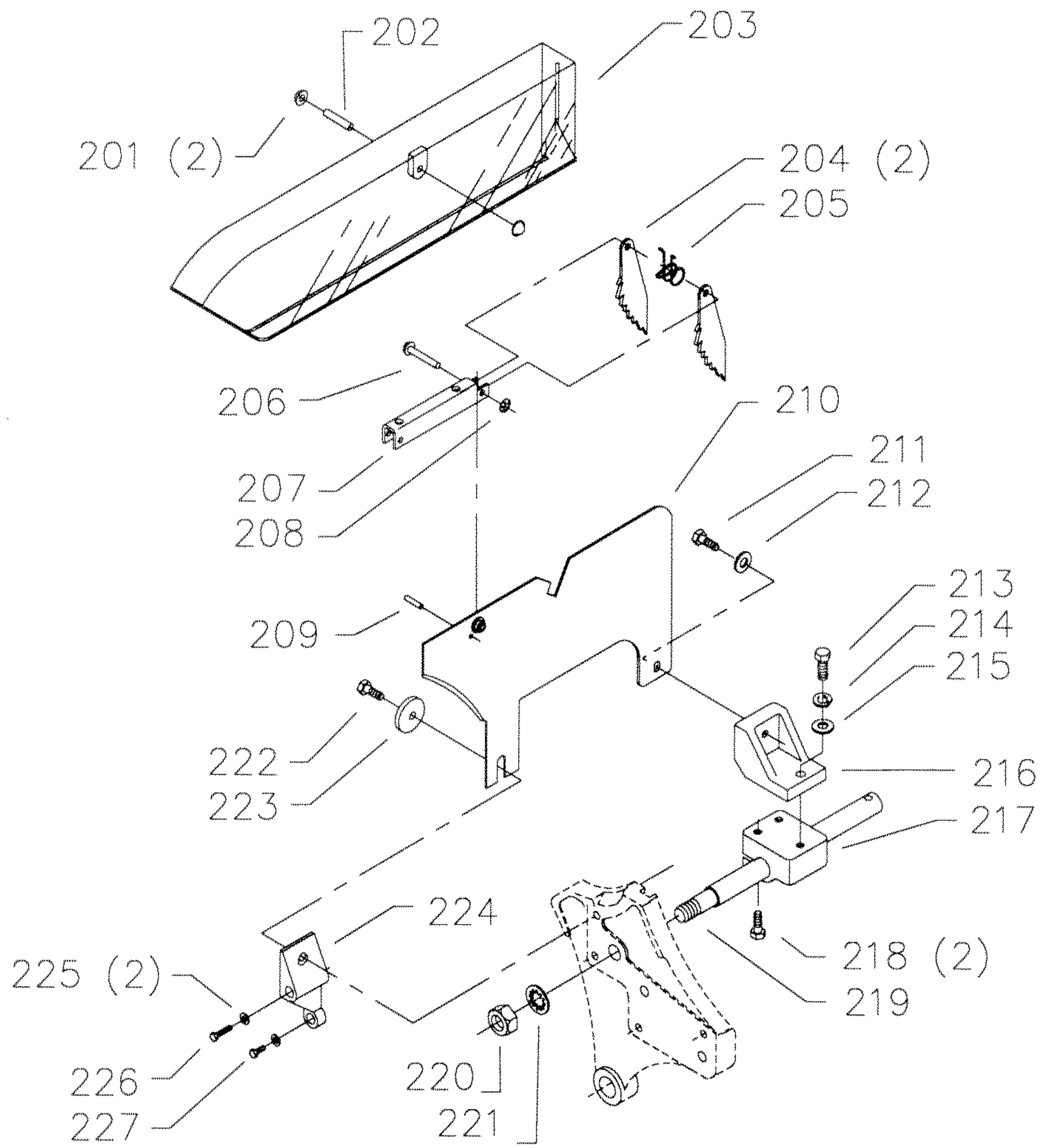
REF NO	PART NUMBER	DESCRIPTION	REF NO	PART NUMBER	DESCRIPTION
*	422-04-314-5003	ARBOR BRACKET, CONST OF:	*	422-04-406-5002	RAISING SHAFT ASSY, CONST OF:
101	902-01-200-9848	ARBOR NUT - LH	150	422-04-074-0001	PLUG
102	422-04-103-5001	FLANGE	151	422-04-412-0009	LOCK KNOB
103	422-04-303-0003	ARBOR & FLANGE	152	904-01-021-3577	3/4" FIBER WASHER
104	927-03-020-2660	1 1/2" KEY	153	905-01-010-2706	3/16" X 1" SPRING PIN
105	1086894	BALL BEARING	154	422-04-406-0001	SHAFT W/WORM, INCL:
106	928-06-020-7382	LOAD SPRING	155	902-01-210-1036	3/4-16 LOCK NUT
107	422-04-104-0002	SPACER	156	434-01-404-0001	COLLAR, INCL:
108	926-03-991-2328	ARBOR PULLEY, INCL:	157	901-04-190-0201	5/16-18 X 5/16" HEX SOC SET SCREW
109	0908653	5/16-18 X 3/8" HEX SOC HD SCREW	158	927-03-010-2650	1 3/8" KEY
110	902-07-020-7176	BEARING CLOSURE NUT	159	901-01-060-5769	5/16-24 X 1" HEX HD SCREW
111	904-05-010-6664	LOCK WASHER	160	902-01-020-1228	5/16-24 JAM NUT
112	902-01-200-9847	SPECIAL NUT	161	905-01-010-2734	5/16" X 1" SPRING PIN
113	422-04-314-5002	ARBOR BRACKET, INCL:	162	904-02-020-1704	3/8" LOCK WASHER
114	904-02-020-1704	3/8" LOCK WASHER	163	901-03-010-0775	3/8-16 X 1" HEX SOC HD SCREW
115	901-01-060-3102	3/8-16 X 1 3/4" HEX HD SCREW	164	422-04-395-5001	FRONT TRUNNION, INCL:
116	904-15-101-7147	INTERNAL RETAINING RING	165	920-75-011-3935	BUSHING
117	927-03-010-2653	1 15/16" KEY	166	422-04-400-0005	HANDWHEEL, INCL:
118	422-04-314-5004	MOTOR BRACKET W/SHAFT, INCL:	167	901-04-190-0201	5/16-18 X 5/16" HEX SOC SET SCREW
119	928-06-011-4128	1/4" WAVE WASHER	168	904-07-010-5569	3/4" FIBER WASHER
120	905-01-010-5072	1/4" X 2" SPRING PIN	169	901-03-010-0750	5/16-18 X 1" HEX SOC HD SCREW
121	927-03-010-2657	2.937" KEY	170	422-04-031-0015	COVER PLATE
125	49-124	V-BELTS	171	422-04-014-5001	FRONT BRACKET
126	41-644	MOTOR PULLEY, INCL:	172	901-01-060-0682	3/8-24 X 1 1/2" HEX HD SCREW
127	0908653	5/16-18 X 3/8" HEX SOC HD SCREW	173	904-02-020-1704	3/8" LOCK WASHER
130	904-10-031-2097	WASHER	174	902-01-010-1207	3/8-24 HEX NUT
131	901-01-060-0664	7/16-20 X 1" HEX HD SCREW	175	927-03-010-2650	1 3/8" KEY
132	422-04-071-5001	STEEL PIN	176	422-04-406-5001	TILT SHAFT W/WORM, INCL:
133	422-04-079-5001	SPRING CLIP	177	904-10-031-4509	COLLAR
134	422-04-036-5001	DEFLECTOR	178	904-01-021-3577	3/4" FIBER WASHER
135	422-04-104-5005	SLEEVE	179	905-01-010-2706	3/16" X 1" SPRING PIN
136	901-01-060-0613	5/16-18 X 1 3/4" HEX HD SCREW	180	422-04-074-0001	PLUG
137	422-04-102-5002	YOKE	181	422-04-412-0009	LOCK KNOB
138	422-04-014-0042	BRACKET	182	422-04-055-0006	GUIDE BLOCK
139	901-03-010-0775	3/8-16 X 1" HEX SOC HD SCREW	183	904-10-031-2097	WASHER
141	904-02-020-1704	3/8" LOCK WASHER	184	901-01-060-0681	7/16-20 X 1 1/2" HEX HD SCREW
142	901-01-060-0682	3/8-24 X 1 1/2" HEX HD SCREW	185	422-04-014-2008	POINTER BRACKET
143	902-01-010-1207	3/8-24 HEX NUT	186	0919714	#08-32 X 2" FILL HD SCREW
144	905-01-010-2734	5/16" X 1" SPRING PIN	187	904-07-010-5569	3/4" FIBER WASHER
145	422-04-395-5002	REAR TRUNNION, INCL:	188	422-04-400-0005	HANDWHEEL, INCL:
146	920-75-011-3934	BEARING	189	901-04-190-0201	5/16-18 X 5/16" HEX SOC SET SCREW
			190	422-04-075-0002	POINTER
			191	901-06-110-3036	1/4-20 X 3/8" ROUND HD SCREW
			**	438-01-004-0054	CABLE TIE (See Service Note A)
			195	422-39-101-0001	WRENCH - 7/8 X 1/2"
			196	955-01-050-1472	WRENCH

* NOT SHOWN ASSEMBLED

** NOT SHOWN

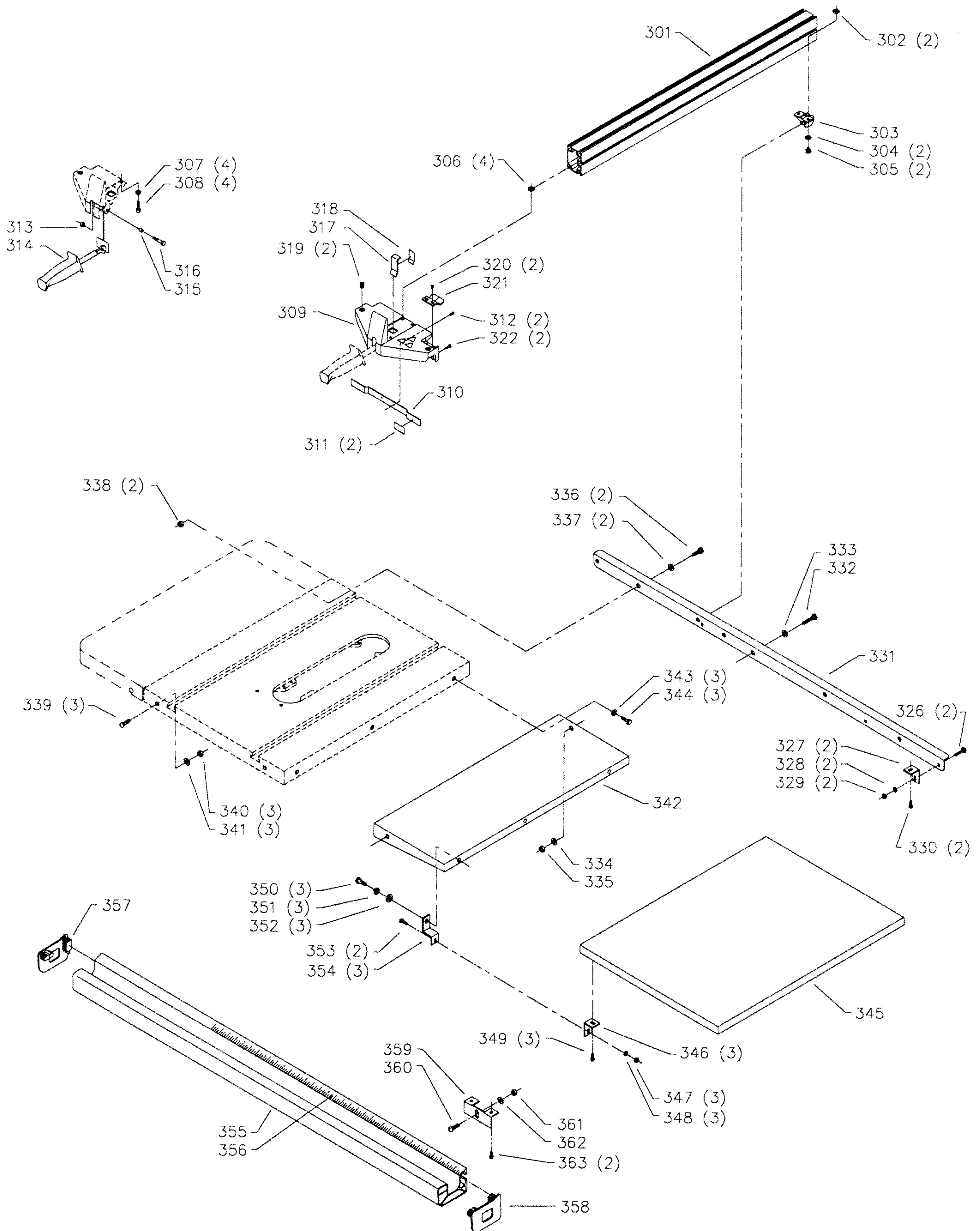
SERVICE NOTES:

A - Used to secure motor and switch cords. See owners manual for details.



REPLACEMENT PARTS

<u>REF NO</u>	<u>PART NUMBER</u>	<u>DESCRIPTION</u>
*	34-639	BLADE GUARD COMPLETE, CONST OF:
*	1086935	BLADE GUARD, CONST OF:
201	1086388	PUSH NUT CAP
202	1087811	PIN
203	1086334	SEE THRU GUARD
204	422-16-047-0001	KICK BACK FINGER
205	1086353	SPRING
206	422-04-071-0007	PIN
207	1086337	PIVOT BRACKET
208	1086387	PUSH NUT
209	905-01-010-6721	1/4" X 7/8" SPRING PIN
210	422-04-086-0002	SPLITTER W/BUSHING
211	901-01-060-0649	5/16-18 X 1" HEX HD SCREW
212	904-01-010-1620	FLAT WASHER
213	901-01-060-0649	5/16-18 X 1" HEX HD SCREW
214	904-02-010-1703	5/16" LOCK WASHER
215	904-01-010-1620	FLAT WASHER
216	422-04-014-0018	BRACKET
217	422-04-014-0019	BRACKET
218	901-01-060-0649	5/16-18 X 1" HEX HD SCREW
219	422-04-089-0003	SUPPORT ROD
220	902-01-020-1226	5/8-18 JAM NUT
221	904-03-020-1751	5/8" INT TOOTH WASHER
222	901-01-060-0649	5/16-18 X 1" HEX HD SCREW
223	422-03-072-0001	PLATE
224	422-04-014-0037	SPLITTER BRACKET
225	904-01-031-2934	1/4" FLAT WASHER
226	901-03-010-0230	1/4-20 X 2" HEX SOC HD SCREW
227	901-03-010-0755	1/4-20 X 3/4" HEX SOC HD SCREW
275	901-02-453-1123	#10-32 X 1/2" PAN HD SCREW
276	438-01-016-0194	STARTER - GPE, 1PH, 230V, INCL:
277	438-01-004-0007	CORD CLAMP
278	438-01-011-0054	INSULATOR SLEEVE
279	902-01-293-1513	#10-32 KEPS NUT
280	422-40-014-0007	MOUNTING BRACKET - GPE
282	901-03-033-1046	5/16-18 X 1" FLAT HD SCREW
283	904-01-010-1620	FLAT WASHER
284	902-01-010-1300	5/16-18 HEX NUT
*	NOT SHOWN ASSEMBLED	



REPLACEMENT PARTS

REF NO	PART NUMBER	DESCRIPTION	REF NO	PART NUMBER	DESCRIPTION
*	422-19-343-0004	FENCE ASSY COMPLETE, CONST OF:	333	904-01-010-1615	FLAT WASHER
301	422-19-043-0005	FENCE	334	904-01-010-1615	FLAT WASHER
302	902-02-040-1306	1/4-20 SQUARE NUT	335	902-01-010-5900	3/8-16 JAM NUT
303	422-19-048-0001	REAR FOOT	336	901-01-060-0688	3/8-24 X 3/4" HEX HD SCR
304	904-01-010-1614	FLAT WASHER	337	904-01-010-1615	FLAT WASHER
305	901-02-763-1802	1/4-20 X 5/8" HEX WASHER HD SCR	338	902-01-010-5900	3/8-16 JAM NUT
306	902-02-040-1306	1/4-20 SQUARE NUT	339	901-11-020-0891	3/8-16 X 1" CARRIAGE HD SCR
307	904-02-020-1702	1/4" LOCK WASHER	340	902-01-010-5900	3/8-16 JAM NUT
308	901-03-010-0755	1/4-20 X 3/4" HEX SOC HD SCR	341	904-01-010-1615	FLAT WASHER
309	422-19-343-0005	FENCE HEAD ASSY, INCL:	342	36-931	EXTENSION WING (SQUARE CORNER), INCL:
310	422-39-439-0001	ADJUSTMENT STRIP, INCL:	343	904-10-031-2097	WASHER
311	422-19-439-0003	WEAR PAD REPAIR KIT (See Service Note B)	344	901-01-060-9964	7/16-20 X 11/4" HEX HD SCR
312	901-05-163-1126	#08-32 X 5/16" PAN HD SCR	345	422-27-091-0015	14" TABLE BOARD
313	902-01-212-2409	1/4-20 LOCK NUT	346	422-27-089-0007	ANGLE BRACKET
314	422-19-367-0002	HANDLE ASSY	347	904-01-010-1614	FLAT WASHER
315	422-19-104-0006	SPACER	348	902-01-120-1034	1/4-20 HEX NUT
316	901-01-063-1807	1/4-20 X 1 1/4" HEX HD SCR	349	901-25-043-1791	SCREW
317	422-19-439-0002	CLAMP PLATE, INCL:	350	901-01-060-0680	7/16-20 X 3/4" HEX HD SCR
318	422-19-439-0003	WEAR PAD REPAIR KIT (See Service Note B)	351	904-02-010-1716	1/4" LOCK WASHER
319	422-39-112-0005	LEVELING SCREW	352	904-01-010-1638	FLAT WASHER
320	901-05-163-1126	#08-32 X 5/16" PAN HD SCR	353	901-11-020-0821	1/4-20 X 3/4" CARRIAGE HD SCR
321	422-19-075-0002	CURSOR	354	422-27-014-0003	ADAPTER
322	901-01-063-1801	1/4-20 X 5/8" HEX HD SCR	355	422-19-355-0003	FRONT GUIDE RAIL, INCL:
326	901-11-020-0821	1/4-20 X 3/4" CARRIAGE HD SCR	356	422-19-132-0004	SCALE
327	422-27-089-0007	ANGLE BRACKET	357	422-19-020-0005	END CAP - LEFT
328	904-01-010-1614	FLAT WASHER	358	422-19-020-0004	END CAP - RIGHT
329	902-01-120-1034	1/4-20 HEX NUT	359	422-19-014-0005	BRACKET
330	901-25-043-1791	SCREW	360	901-11-020-0891	3/8-16 X 1" CARRIAGE HD SCR
331	422-19-089-0012	REAR RAIL	361	902-01-010-5900	3/8-16 JAM NUT
332	901-01-010-0642	3/8-24 X 1" HEX HD SCR	362	904-01-010-1615	FLAT WASHER
			363	901-25-043-1791	SCREW

* NOT SHOWN ASSEMBLED

SERVICE NOTES:

B - Service Kit includes 3 Wear Pads.

STANDARD SAFETY EQUIPMENT

In order to promote tool safety, Delta International Machinery Corp. strictly enforces the policy of repairing or replacing any damaged or missing standard safety equipment on machines presented to Delta Authorized Service Center for service/repairs. Any product which is presented to a Delta Authorized Service Center for repairs which contains missing or damaged standard safety equipment will have that equipment repaired or replaced and the customer will be charged for any such service/repairs. Customers can avoid such charges only if the missing safety component is supplied to the service center at the time of repair.

This parts list is provided to aid in obtaining service parts. Copies of the instruction and maintenance literature can be obtained through the Delta Technical Publications Department or through your local service outlet.