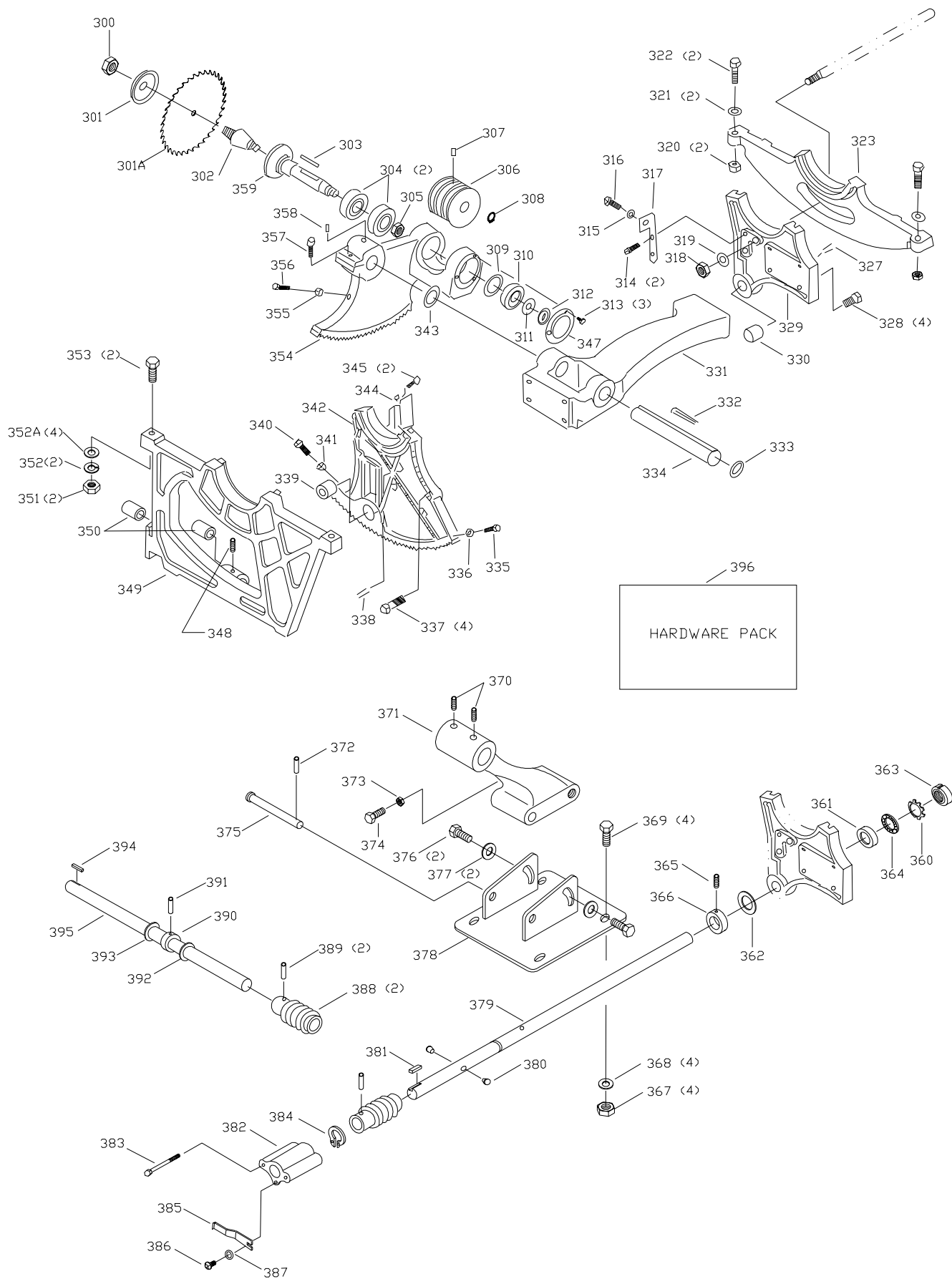


REPLACEMENT PARTS

Ref.	<u>No.</u>	<u>Part No.</u>	<u>Description</u>
	1	1237216	SCALE
	2	912154	M12 X 15 SCREW
	3	912062	BLADE INSERT
	4	1243339	M6 X 1.00 X 8 SET SCREW
	*	912064	BLADE GUARD ASSEMBLY, INCL.: REF. 5, 6, 7, 8, 8A, 9, 10, 11, 13, 14, & 15
	5	912065	RETAINER
	6	912066	GUARD
	7	912065	RETAINER
	8	912067	SUPPORT ARM
	8A	912068	SPACER
	9	912069	PIN
	10	912070	PIN
	11	912071	SPRING
	13	912074	ANTI KICK BACK LEAF
	14	1246023	SPRING PIN
	15	912075	BLADE SPLITTER
	17	1246016	M8-1.25 X 25 HEX HD SCREW
	18	1344330	WASHER
	19	1341153	M8-1.25 X 12 SCREW
	20	1344330	FLAT WASHER
	21	912077	UPPER GUARD SUPPORT
	22	912078	LOWER GUARD SUPPORT
	23	904-02-010-1726	LOCK WASHER
	25	1246016	M8-1.25 X 25 HEX BOLT
	26B	912080	CORD
	27	912081	DOOR ASSEMBLY
	27A	912082	DOOR GASKET
	28	912083	LATCH ASSEMBLY
	28A	912864	LATCH HOOK
	30	912084	GUARD SUPPORT ROD
	31	912088	GROMMET
	32	912085	V-BELT
	33	912086	MOTOR PULLEY
	34	1246092	M6-1 X 6 SCREW
	35	912149	3/16 X 1 1/2"KEY
	36	912223	MOTOR ASSEMBLY
	37	912087	STRAIN RELIEF
	38	910925	SWITCH / STARTER
	39	1246035	M10-1.5 X 30 SCREW
	40	893235	WASHER
	41	912089	SHIELD PLATE
	42	1246053	M8-1.25 X 25 SCREW
	43	1246092	M6-1X 6 SET SCREW
	44	912090	CRANK HANDLE
	45	912092	LOCKING KNOB
	46	912091	HAND WHEEL
	48	912093	BASE
	48A	912256	NAME PLATE
	49	1237216	SCALE
	51	893235	WASHER
	52	1246019	M10-1.5 X 35 SCREW
	52A	1344035	WASHER
	53	912095	LEFT EXTENSION TABLE
	54	422-01-137-0013	WARNING LABEL
	55	912096	RIGHT EXTENSION TABLE
	56	1310155	M5-.8 X 8 R HD SCREW
	57	1343538	FLAT WASHER
	58	A00168	CAPACITOR
	59	422-30-101-0002	HEX WRENCH
	60	428-06-101-0002	HEX WRENCH
	61	912105	SPANNER WRENCH
	62	912106	12MM X 14MM WRENCH
	63	912107	17MM X 19MM WRENCH
	250	912097	MITER GAGE

* NOT SHOWN ASSEMBLED



REPLACEMENT PARTS

Ref.			Ref.		
<u>No.</u>	<u>Part No.</u>	<u>Description</u>	<u>No.</u>	<u>Part No.</u>	<u>Description</u>
300	912108	ARBOR NUT	356	1246013	M6-1 X 12 SCREW
301	912109	BLADE FLANGE	357	1246053	M8-1.25 X 25 CAP SCREW
301A	SEE CATALOG	BLADE	358	1246150	M8-1.25 X 8 SCREW
302	912110	ARBOR ADAPTOR	359	912129	ARBOR
303	912150	KEY	360	912865	WASHER
304	912111	BEARING	361	912130	BEARING DUST DEFLECTOR
305	912151	LOCK NUT	362	912131	WASHER
306	912112	DRIVE PULLEY	363	912132	LOCK NUT
307	1246092	M6-1 X 6 SET SCREW	364	912133	THRUST BEARING
308	912113	SNAP RING	365	1225092	M6 X 6MM SCREW
309	912114	WASHER	366	912134	COLLAR
310	912115	BEARING	367	1243496	HEX NUT
311	1243517	WASHER	368	893235	LOCK WASHER
312	912151	LOCKING NUT	369	1246035	M10-1.5 X 30 HEX BOLT
313	1310155	M5-.8 X 8 SCREW	370	1225092	M6-1 X 6 SET SCREW
314	901-03-010-0229	1/4-20 X 1/2" SCREW	371	912135	MOTOR MOUNT SUPPORT
315	1344220	WASHER	372	912136	COTTER PIN
316	1341153	M8-1.25 X 12 SCREW	373	1243398	HEX NUT
317	912152	FRONT SUPPORT BRACKET	374	1246093	M8-1.25 X 35 HEX BOLT
318	1243476	HEX NUT	375	912137	PIVOT SHAFT
319	1246065	WASHER	376	912154	M12-1.75 X 15 HEX BOLT
320	1243496	HEX NUT	377	1348917	WASHER
321	893235	LOCK WASH	378	912138	MOTOR MOUNTING PLATE
322	1246019	M10-1.5 X 35 SCREW	379	912139	HEIGHT ADJUSTMENT SHAFT
323	912116	REAR TRUNNION BRACKET	380	912140	LIMIT STUD
327	1243550	SPRING PIN	381	428-06-079-0004	KEY
328	1243561	M10-1.5 X 25 SCREW	382	912141	INDICATOR BRACKET
329	912117	REAR TRUNNION BRACKET	383	912155	M5 .8 X 60 SOC HD BOLT
330	912118	BUSHING	384	912065	RETAINER
331	912119	ARM	385	912142	INDICATOR
332	912153	KEY	386	1310155	M5-.8 X 8 ROUND HD SCREW
333	912113	SNAP RING	387	1343538	WASHER
334	912120	SHAFT	388	912143	WORM GEAR
335	1246093	M8-1.25 X 35 SCREW	389	912144	ROLL PIN
336	1243398	HEX NUT	390	912145	COLLAR
337	1243561	M10-1.5 X 25 CAP SCREW	391	912144	ROLL PIN
338	1243550	ROLL PIN	392	912146	WASHER
339	912121	BUSHING	393	912147	WASHER
340	1246093	M8-1.25 X 35 HEX BOLT	394	428-06-079-0004	KEY
341	1243398	HEX NUT	395	912148	TILT ADJ. SHAFT
342	912122	FRONT TRUNNION	396	912869	HARDWARE PACKAGE
343	912123	WASHER			
344	912124	DUST DEFLECTOR			
345	1246065	M6-1 X 12 CAP SCREW			
347	912125	COVER			
348	1246092	M6-1 X 6 SET SCREW			
349	912126	FRONT TRUNNION BRACKET			
350	912127	BUSHING			
351	1243496	HEX NUT			
352	893235	LOCK WASHER			
352A	1344035	WASHER			
353	1246019	M10-1.5 X 35 HEX BOLT			
354	912128	ARBOR BRACKET			
355	1243456	HEX NUT			

STANDARD SAFETY EQUIPMENT

In order to promote tool safety, Delta Machinery strictly enforces the policy of repairing or replacing any damaged or missing standard safety equipment on machines presented to Delta Authorized Service Centers for service/repairs. Any product that is presented to a Delta Authorized Service Centers for repairs which contains missing or damaged standard safety equipment will have that equipment repaired or replaced and the customer will be charged for any such service/repairs. Customers can avoid such charges only if the missing safety component is supplied to the service center at the time of repair.

This parts list is provided to aid in obtaining service parts. Copies of the instruction and maintenance literature can be obtained through the Delta Technical Publications Department or through your service outlet.