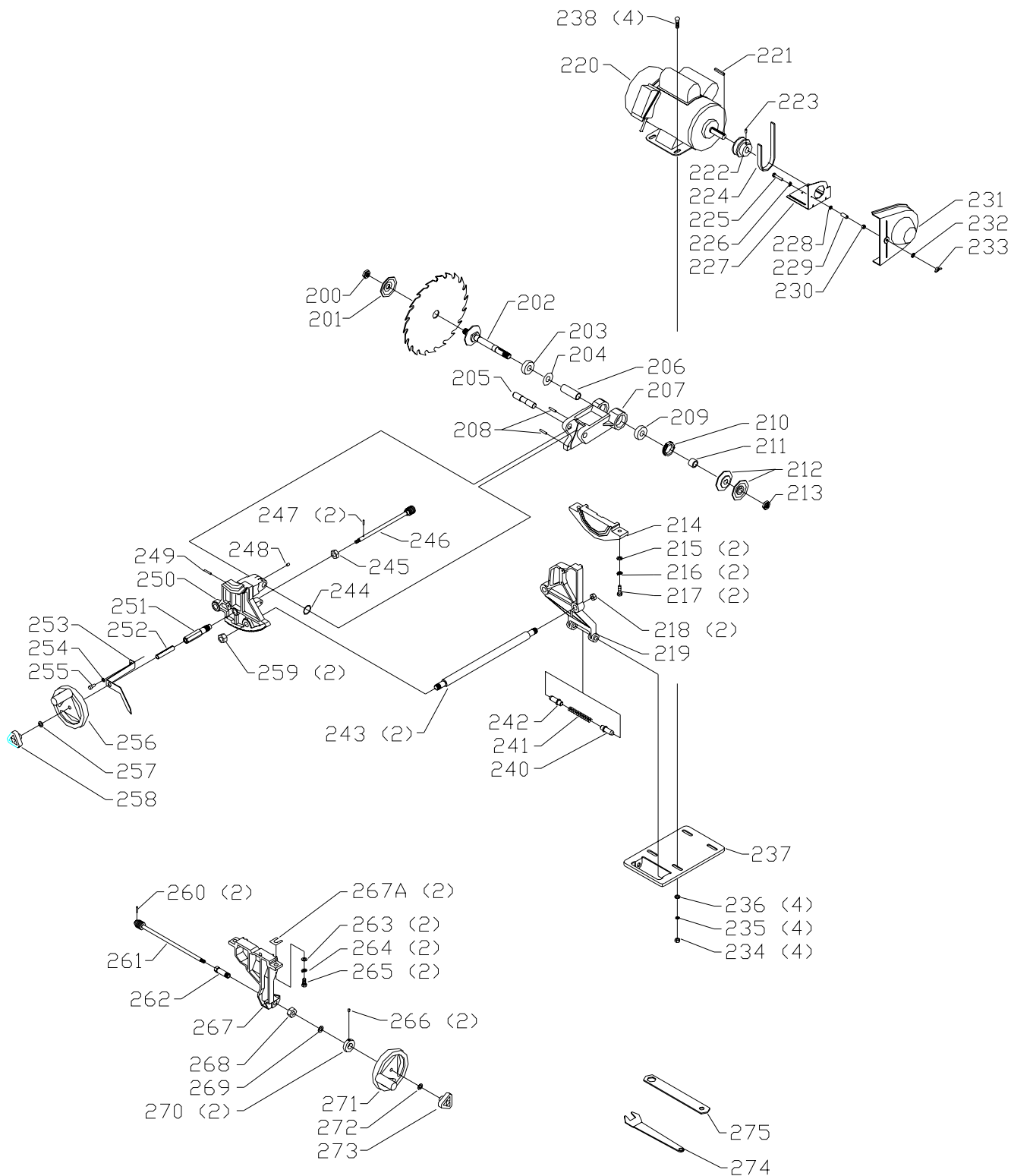


REPLACEMENT PARTS

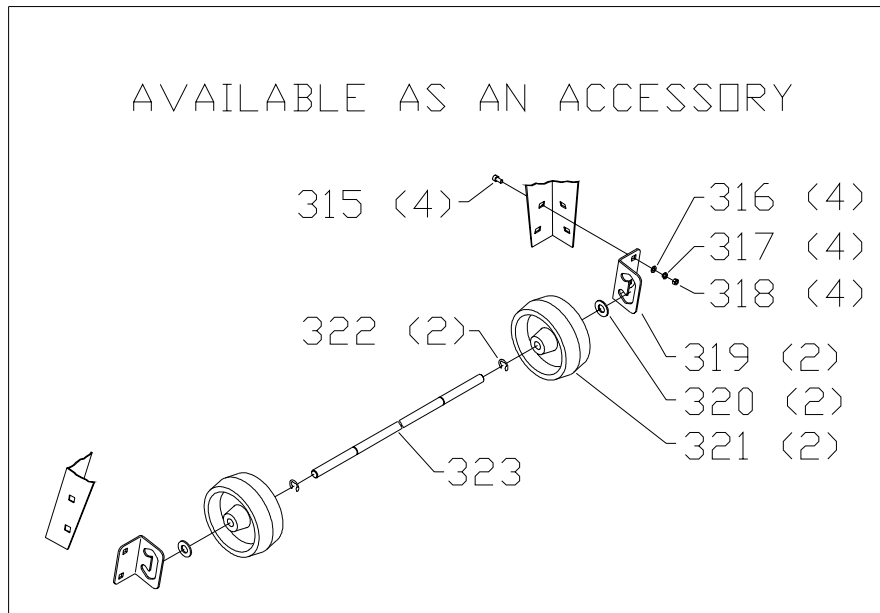
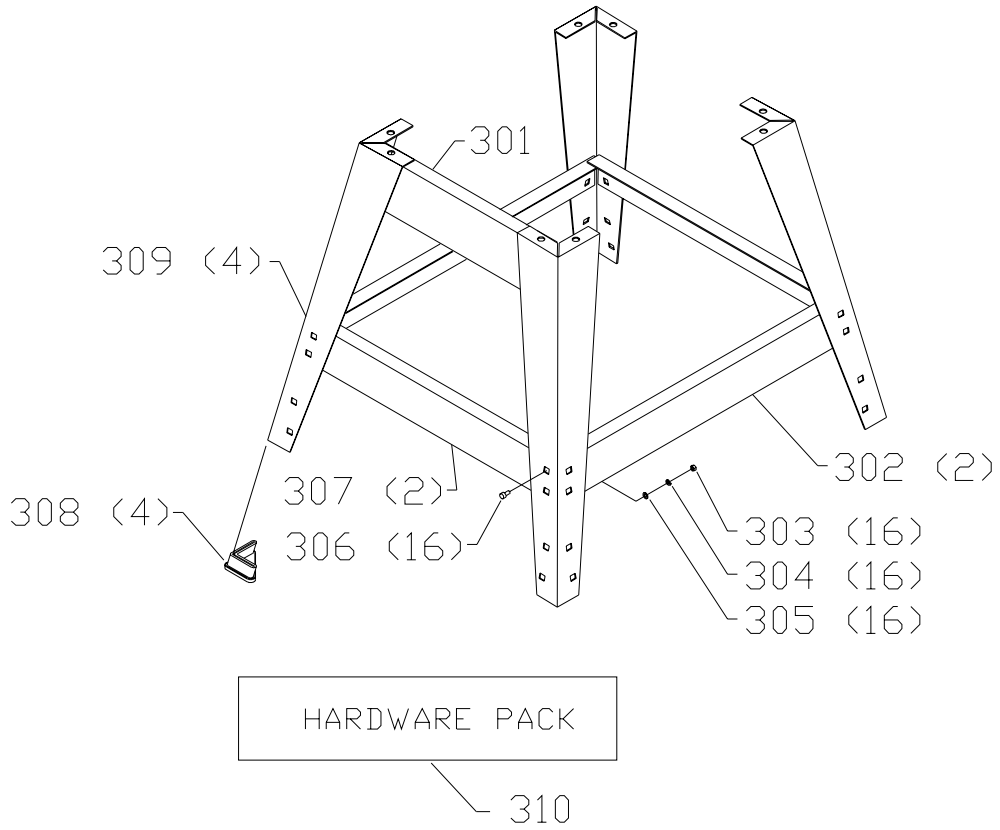
Ref.			Ref.		
<u>No.</u>	<u>Part No.</u>	<u>Description</u>	<u>No.</u>	<u>Part No.</u>	<u>Description</u>
*	1344973	BLADE GUARD ASSY, INCL.:	72	1344600	SWITCH
1	1313270	PUSH NUT	73	1344601	SWITCH PADDLE
2	1313271	PIN	74	1344608	SWITCH PLATE
3	1344974	"SEE THRU" GUARD	75	901-05-163-1126	08-32 X 5/16" PAN HD SCREW
4	1313273	PIN	76	1310210	M4.3 EXT TOOTH WASHER
5	1313274	BRACKET	77	1344599	CORD W/FEMALE DISCONNECT
6	1313275	LOCK RING	78	1344607	SWITCH BOX
7	1313276	SPRING	79	1310547	M4.2 X 12MM PAN HD SCREW
8	901-11-023-1476	5/16-18 X 5/8" CARRIAGE HD SCREW	80	1340406	M4.2 X 10MM PAN HD SCREW
9	1344975	SPLITTER	81	902-01-120-1034	1/4-20 HEX NUT
9A	1310311	M4 X 22MM SPRING PIN	82	902-01-010-5900	3/8-16 JAM NUT
9B	1313279	ANTI-KICKBACK FINGER	83	904-02-020-1704	3/8" LOCK WASHER
10	1344976	BRACKET	84	904-01-010-1615	FLAT WASHER
11	904-01-010-1620	FLAT WASHER	85	902909	CABINET, INCL.; T2
12	902-01-010-1300	5/16-18 HEX NUT		1344603	CABINET, INCL.; T1
13	901-01-060-0626	1/4-20 X 3/4" HEX HD SCREW	85A	902711	WARNING LABEL, T2
14	904-01-010-1614	FLAT WASHER		1344555	WARNING LABEL, T1
15	904-02-020-1702	1/4" LOCK WASHER	86	n 1344554	NAMEPLATE, T2
16	904-01-031-2934	1/4" FLAT WASHER		1344554	NAMEPLATE, T1
17	901-03-010-0755	1/4-20 X 3/4" HEX SOC HD SCREW	87	1087794	RIVET
18	901-03-010-0230	1/4-20 X 2" HEX SOC HD SCREW	88	1246047	M5 X 16MM CHEESE HD SCREW
19	1344978	SPLITTER BRACKET	89	904-01-031-5655	FLAT WASHER
20	1344977	PLATE	90	1343390	5/16" LOCK WASHER
21	901-01-060-0649	5/16-18 X 1" HEX HD SCREW	91	901-01-060-0606	5/16-18 X 5/8" HEX HD SCREW
30	1344605	REAR RAIL	92	1340719	CLAMP
31	901-01-060-0642	3/8-16 X 1" HEX HD SCREW	93	901-01-060-0606	5/16-18 X 5/8" HEX HD SCREW
32	1320093	FLAT WASHER	94	904-01-010-1620	FLAT WASHER
33	904-02-020-1704	3/8" LOCK WASHER	95	904-02-010-1703	5/16" LOCK WASHER
35	1344592	TABLE INSERT, INCL.:	96	902-01-010-1300	5/16-18 HEX NUT
36	901-04-461-5297	1/4-28 X 3/8" SET SCREW (NOTE A)	97	1344604	BRACKET
37	1344606	TABLE	98	901-02-010-0506	5/16-18 X 5/8" ROUND HD SCREW
38	901-04-293-1395	5/16-18 X 3/4" SET SCREW (NOTE A)	99	902-01-503-1514	5/16-18 FLANGE NUT
40	902908	EXTENSION WING	*	1344610	FENCE ASSY, INCL.:
41	901-01-060-0680	7/16-20 X 3/4" HEX HD SCREW	101	1343504	M5 LOCKNUT
42	n A07638	FLAT WASHER	102	1344970	END PLUG
43	n 904-01-010-1638	7/16" FLAT WASHER	103	1344971	REAR CLAMP
44	1344594	RAIL, INCL.:	104	1341783	M5 X 25MM CHEESE HD SCREW
45	902709	SCALE, T2	105	1344969	PLATE
	1344556	SCALE, T1	106	1246193	M6 X 60MM SPRING PIN
46	1352011	3/8-16 X 1 1/2" FLAT HD SCREW	107	901-06-110-3002	08-32 X 3/8" ROUND HD SCREW
47	1344597	END PLUG L.H.	108	902910	FENCE BODY
48	1344596	END PLUG R.H.	109	1246014	M6 X 15MM HEX HD SCR (NOTE A)
49	904-01-010-1615	FLAT WASHER	110	1344967	MYLAR STRIP
50	904-02-020-1704	3/8" LOCK WASHER	111	1344966	SPECIAL SCREW
51	1350291	3/8-16 HEX NUT	112	1344965	SPACER PLATE
*	1344591	MITER GAGE ASSY, INCL.:	113	1345382	M8 LOCKNUT
52	1342685	HANDLE	114	1344964	HANDLE
53	1313241	WASHER	115	1344963	CLAMP CAM
54	1310055	M6 X 6MM HEX SOC SET SCREW	116	1345083	O-RING
55	1313242	MITER GAGE	117	1345082	SPECIAL SCREW
56	1344593	SPECIAL WASHER	118	1344961	POINTER
57	901-02-030-5750	1/4-28 X 5/16" FLAT HD SCREW	119	1350276	FLAT WASHER
58	1345220	GUIDE BAR	120	901-02-010-0593	10-24 X 3/8" ROUND HD SCREW
59	1313247	PIN	121	904-01-031-2945	5/16" FLAT WASHER
60	1313245	STOP LINK	122	901-01-060-0605	5/16-18 X 1/2" HEX HD SCREW
61	1310055	M6 X 6MM HEX SOC SET SCREW	123	1344972	FENCE
62	1313243	POINTER	124	902907	HARDWARE PACK
63	1310161	M4 X 18MM PAN HD SCREW	125	n 905487	RAIL HARDWARE PACK
64	1243569	M4 HEX NUT			
69	1344602	POWER CORD	*		NOT SHOWN ASSEMBLED
70	1344609	SWITCH BOX			
71	901-03-030-8013	1/4-20 X 3/4" FLAT HD SCREW			

NOTE A: WHEN SERVICING, USE THREAD RETAINING COMPOUND PRIOR TO INSTALLATION.



REPLACEMENT PARTS

<u>Ref.</u>	<u>Part No.</u>	<u>Description</u>	<u>Ref.</u>	<u>Part No.</u>	<u>Description</u>
200	1344990	ARBOR NUT L.H.	237	1345003	MOTOR PLATE
201	1344991	FLANGE	238	901-11-020-0834	5/16-18 X 3/4" CARRIAGE HD SCREW
202	1344992	ARBOR SHAFT	240	1345001	PIN
203	1086894	BEARING	241	1345002	SPRING
204	928-06-020-7382	LOAD SPRING	242	1345001	PIN
205	1344994	SHAFT	243	1344989	TIE BAR
206	1344993	SPACER	244	928-06-013-1676	WAVE WASHER
207	1344995	BRACKET	245	902-01-020-1226	5/8-18 JAM NUT
208	1243300	M5 X 24MM SPRING PIN	246	1344988	ELEVATING SHAFT ASSY
209	1086894	BEARING	247	1246147	M3 X 14MM SPRING PIN
210	1344996	BEARING CLOSURE NUT	248	901-04-141-9152	1/4-20 X 5/16" HEX SOC SET SCREW
211	1344997	SPACER	249	1246101	M5 X 28MM SPRING PIN
212	1344998	PULLEY HALF	250	1344987	FRONT TRUNNION
213	902-01-020-1226	5/8-18 JAM NUT	251	1344986	SLEEVE
214	1345000	BRACKET	252	1344981	SPACER
215	904-01-010-1604	5/16" FLAT WASHER	253	1344980	POINTER
216	1343390	5/16" LOCK WASHER	254	904-01-010-1614	FLAT WASHER
217	901-01-060-0649	5/16-18 X 1" HEX HD SCREW	255	901-03-010-3309	1/4-20 X 5/8" HEX SOC HD SCREW
218	902-01-283-1393	5/8-18 LOCKNUT	256	902900	HANDWHEEL ASSY
219	1344999	REAR TRUNNION	257	1313239	WASHER
220	902916	MOTOR ASSEMBLY, T2	258	902898	KNOB
	1345009	MOTOR ASSEMBLY, T1	259	902-01-283-1393	5/8-18 LOCKNUT
221	428-07-079-0009	KEY	260	1246147	M3 X 14MM SPRING PIN
222	1345008	MOTOR PULLEY	261	1344984	TILT SHAFT ASSY
223	901-04-150-0206	5/16-18 X 5/16" HEX SOC SET SCREW	262	1344983	ECCENTRIC
224	49-034	BELT	263	904-01-010-1604	5/16" FLAT WASHER
225	901-01-060-3124	1/4-20 X 1 1/2" HEX HD SCREW	264	1343390	5/16" LOCK WASHER
226	904-03-030-1757	1/4" EXT TOOTH WASHER	265	901-01-060-0649	5/16-18 X 1" HEX HD SCREW
227	1345005	PLATE	266	901-04-150-0208	1/4-20 X 1/4" HEX SOC SET SCREW
228	904-01-010-1614	FLAT WASHER	267	1344982	FRONT TRUNNION BRACKET
229	1345006	SPACER	267A	1345086	SHIM
230	902-01-120-1034	1/4-20 HEX NUT	268	1345084	9/16-18 JAM NUT
231	1345007	COVER	269	904-01-031-2933	3/8" FIBER WASHER
232	904-03-030-1757	1/4" EXT TOOTH WASHER	270	1344985	COLLAR
233	902-04-010-1402	1/4-20 WING NUT	271	902900	HANDWHEEL ASSY
234	902-01-010-1300	5/16-18 HEX NUT	272	1313239	WASHER
235	904-03-030-1656	5/16" EXT TOOTH WASHER	273	902898	KNOB
236	904-01-010-1620	FLAT WASHER	274	1313232	7/8" OPEN END WRENCH
			275	955-01-050-1482	7/8" X 1/2" WRENCH



REPLACEMENT PARTS

Ref.

<u>No.</u>	<u>Part No.</u>	<u>Description</u>
*	1345010	STAND, INCL.: T2
	902942	STAND, INCL.: T1
301	902913	BRACKET, T2
	1345075	BRACKET, T1
302	902914	BRACKET, T2
	1345077	BRACKET, T1
303	902-01-010-1300	5/16-18 HEX NUT
304	904-02-010-1703	5/16" LOCK WASHER
305	904-01-010-1620	FLAT WASHER
306	901-11-023-1476	5/16-18 X 5/8" CARRIAGE HD SCREW
307	902912	BRACKET, T2
	1345076	BRACKET, T1
308	427-99-048-0001	PLASTIC FOOT
309	902911	LEG, T2
	1345078	LEG, T1
310	n 905527	STAND HARDWARE PACK

ACCESSORIES: (Optional)

*	50-338	ROLLER ASSY, INCL.:
315	901-11-023-1476	5/16-18 X 5/8" CARRIAGE HD SCREW
316	904-01-010-1620	FLAT WASHER
317	904-02-010-1703	5/16" LOCK WASHER
318	902-01-010-1300	5/16-18 HEX NUT
319	1345079	WHEEL SUPPORT BRACKET
320	904-01-031-5734	FLAT WASHER
321	1345080	WHEEL
322	1340725	EXT RET RING
323	1345081	WHEEL SHAFT
*	NOT SHOWN ASSEMBLED	

STANDARD SAFETY EQUIPMENT

In order to promote tool safety, Delta Machinery strictly enforces the policy of repairing or replacing any damaged or missing standard safety equipment on machines presented to Delta Authorized Service Centers for service/repairs. Any product that is presented to a Delta Authorized Service Centers for repairs which contains missing or damaged standard safety equipment will have that equipment repaired or replaced and the customer will be charged for any such service/repairs. Customers can avoid such charges only if the missing safety component is supplied to the service center at the time of repair.

This parts list is provided to aid in obtaining service parts. Copies of the instruction and maintenance literature can be obtained through the Delta Technical Publications Department or through your service outlet.