

REPLACEMENT PARTS

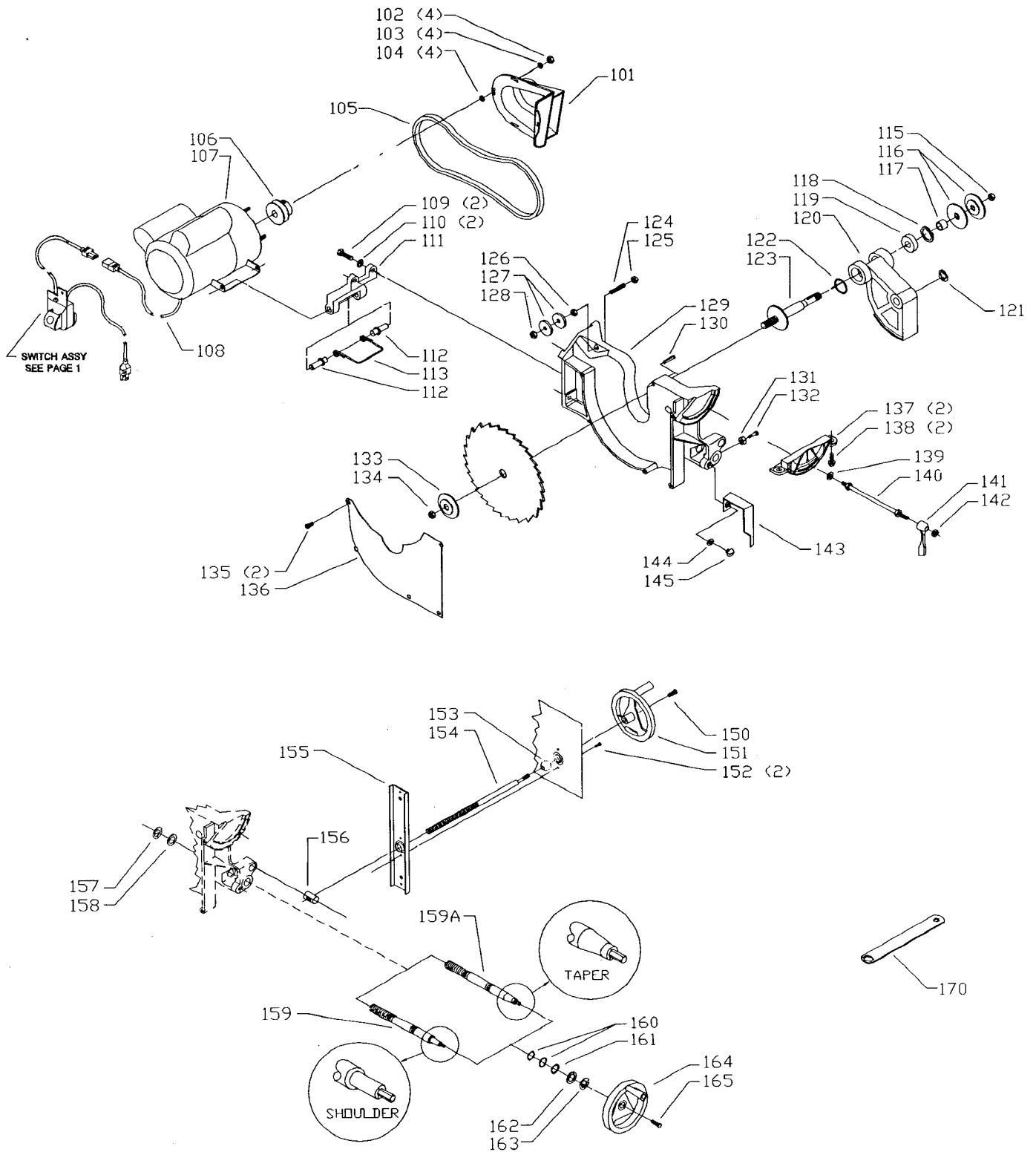
REF NO	PART NUMBER	DESCRIPTION
*	34-895	MITER GAGE ASSY, CONST OF:
1	422-02-074-0001	HOLE PLUG
2	422-02-060-0003	HANDLE
3	904-07-010-5555	1/4" FIBER WASHER
4	422-01-050-0003	GAGE
5	901-04-150-9428	#08-32 X 1/2" HEX SOC SET SCREW
6	901-04-150-1181	1/4-28 X 3/16" HEX SOC SET SCREW
7	422-01-075-0001	POINTER
8	905-01-033-1754	M5 X 6MM SPRING PIN (<i>Early Models Only</i>)
9	422-04-004-0001	BAR, INCL:
10	901-04-150-1181	1/4-28 X 3/16" HEX SOC SET SCREW
11	422-01-088-0004	STOP LINK (<i>Current Models Only</i>)
11A	422-01-088-0002	STOP LINK (<i>Early Models Only</i>)
12	422-01-112-0001	SCREW
13	422-04-072-0001	PLATE
14	901-02-030-5750	1/4-28 X 5/16" FLAT HD SCREW
*	1086935	BLADE GUARD, CONST OF:
15	1086388	PUSH NUT CAP
16	1087811	PIN
17	1086334	SEE THRU GUARD
18	422-04-071-0007	PIN
19	1086337	PIVOT BRACKET
20	1086353	SPRING
21	422-16-047-0001	KICK BACK FINGER
22	1086387	PUSH NUT
23	905-01-010-6729	5/32" X 11/16" SPRING PIN
24	1086911	SPLITTER W/BUSHING
25	901-11-023-1476	5/16-18 X 5/8" CARRIAGE HD SCREW
26	904-01-010-1620	FLAT WASHER
27	902-01-010-1300	5/16-18 HEX NUT
28	422-19-089-0003	BRACKET
29	901-01-060-0612	1/4-20 X 5/8" HEX HD SCREW
30	904-01-010-1614	FLAT WASHER
35	34-154	TABLE INSERT, INCL:
36	901-04-461-5297	1/4-28 X 3/8" HEX SOC SET SCREW
37	901-04-293-1395	5/16-18 X 3/4" HEX SOC SET SCREW
40	34-862	STEEL EXTENSION WING (<i>See Service Note A</i>), INCL:
41	901-01-060-0680	7/16-20 X 3/4" HEX HD SCREW (<i>See Service Note A</i>)
42	904-01-010-1638	FLAT WASHER (<i>See Service Note A</i>)
*	34-278	SWITCH ASSY, CONST OF:
46	422-39-067-0001	SWITCH ACTUATOR
47	438-01-317-0127	SWITCH
48	422-39-014-0009	SWITCH BOX COVER
49	422-39-089-0007	SWITCH PLATE
50	904-02-010-1703	5/16" LOCK WASHER (<i>For Use W/36-630 Models Only</i>)
51	904-02-020-1704	3/8" LOCK WASHER (<i>For Use W/36-640 Models Only</i>)
52	902-01-010-5900	5/16-18 JAM NUT (<i>For Use W/36-630 Models Only</i>)
53	902-01-040-1030	3/8-16 JAM NUT (<i>For Use W/36-640 Models Only</i>)
54	901-05-163-1229	#10-16 X 1/2" PAN HD SCREW
55	422-39-013-0001	SWITCH BOX
56	901-05-163-1229	#10-16 6" PAN HD SCREW
57	438-01-302-0671	FEMALE DISCONNECT (<i>See Service Note B</i>)
58	438-01-302-0672	CORD SET (<i>See Service Note B</i>)
60	422-39-318-0003	CABINET ASSY, INCL:
61	422-39-072-0008	NAMEPLATE
62	901-02-763-1709	5/16-18 X 5/8" HEX FLANGE SCREW
63	438-01-004-0091	CABLE TIE

* NOT SHOWN ASSEMBLED

SERVICE NOTES:

A - The 36-630 saw is supplied with 2 (Ref No 40) 34-862 Extension Wings and are mounted with 6 (Ref No 41) screws and 6 (Ref No 42) washers.
The 36-640 saw is supplied with 1 (Ref No 40) 34-862 Extension Wing and is mounted with 3 (Ref No 41) screws and 3 (Ref No 42) washers.

B - When installing power cords (Ref Nos 56 and 57), into the switch box, take care to ensure that the cord's outer insulating jacket passes through the switch box cord clamp area before tightening the switch box assembly screws.



REPLACEMENT PARTS

REF NO	PART NUMBER	DESCRIPTION	REF NO	PART NUMBER	DESCRIPTION
101	422-39-054-0001	BELT GUARD	133	422-04-103-5001	FLANGE
102	902-01-120-1203	#10-32 HEX NUT	134	902-01-200-9848	ARBOR NUT-LH
103	904-01-010-1610	FLAT WASHER	135	901-02-443-1708	1/4-20 X 1/2" PAN HD SCREW
104	904-01-010-1610	FLAT WASHER	136	422-39-031-0002	BLADE COVER
105	925-01-033-1710	V BELT	137	422-39-014-0008	TRUNNION BRACKET
106	926-01-041-9366	MOTOR PULLEY - 2 1/4" OD, INCL:	138	901-02-763-1709	5/16-18 X 5/8" HEX FLANGE SCREW
**	901-04-150-0231	5/16-18 X 3/8" HEX SOC SET SCREW	139	904-01-010-1615	FLAT WASHER
107	62-045	MOTOR, INCL:	140	422-39-111-0022	STUD
108	438-01-302-0670	MALE DISCONNECT (See Service Note C)	141	434-08-067-0002	LEVER
109	901-01-060-0648	3/8-16 X 1 1/4" HEX HD SCREW	142	902-01-213-1635	3/8-16 LOCK NUT
110	904-01-010-1615	FLAT WASHER	143	422-39-075-0001	POINTER
111	422-39-014-0006	MOTOR BRACKET	144	904-01-010-1615	FLAT WASHER
112	422-19-071-0002	PIN	145	901-01-060-3104	3/8-16 X 1/2" HEX HD SCREW
113	422-39-122-0002	SPRING	150	901-03-030-8013	1/4-20 X 3/4" FLAT HD SCREW
115	902-01-020-1226	5/8-18 JAM NUT	151	422-39-400-0001	HANDWHEEL ASSY
116	422-19-130-0001	PULLEY HALF	152	901-05-213-1711	#10-16 X 1/2" HEX WASHER HD SCREW
117	422-19-104-0005	SPACER	153	422-39-139-0001	BEARING
118	904-15-102-0282	INT RET RING	154	422-39-112-0003	TILT SCREW
119	1086894	BEARING	155	422-39-089-0008	SUPPORT
120	422-39-014-0003	ARBOR BRACKET	156	422-39-079-0002	TILT NUT
121	904-15-063-1675	EXT RET RING	157	904-15-060-7443	EXT RET RING
122	928-06-020-7382	LOAD SPRING	158	904-01-023-1677	SHIM WASHER (Early Models Only)
123	422-39-303-0001	ARBOR ASSY	159	422-39-112-0007	ELEVATING SCREW (Current Models Only, See Service Note D)
124	901-04-153-1744	5/16-24 X 2" HEX SOC SET SCREW	159A	422-39-112-0002	ELEVATING SCREW (Current Models Only, See Service Note D)
125	902-01-010-1206	5/16-24 HEX NUT	160	908-26-003-1674	O RING (Early Models Only)
126	902-01-213-1694	5/16-24 LOCK NUT	161	928-06-013-1676	WAVE WASHER
127	422-03-072-0001	PLATE	162	904-01-023-1677	SHIM WASHER
128	902-01-010-1206	5/16-24 HEX NUT	163	904-15-060-7443	EXT RET RING
129	422-39-402-0001	CARRIAGE ASSY, INCL:	164	422-39-400-0001	HANDWHEEL ASSY
130	905-01-010-2712	1/4" X 1 1/4" SPRING PIN (Current Models Only)	165	901-03-030-8013	1/4-20 X 3/4" FLAT HD SCREW
131	902-01-020-5433	3/8-16 JAM NUT (Current Models Only, See Service Note D)	170	422-39-101-0001	WRENCH-7/8 X 1/2"
132	901-01-063-1755	NYLON SCREW (Current Models Only, See Service Note D)	*	NOT SHOWN ASSEMBLED	
			**	NOT SHOWN	

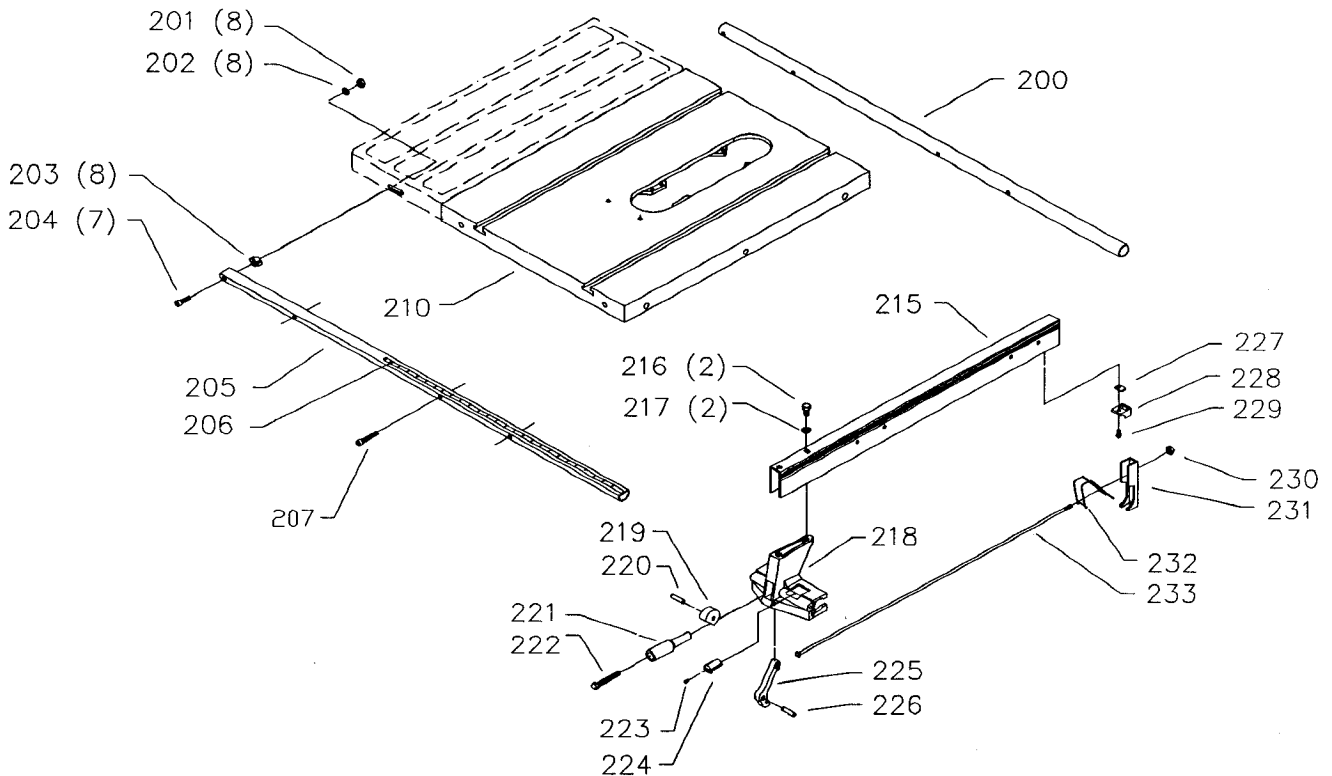
SERVICE NOTES:

C - When installing power cord (Ref No 108), into the switch box, take care to ensure that the cord's outer insulating jacket passes through the switch box cord clamp area before tightening the switch box assembly screws.

D - Early Elevating Screw (Ref No 159A) had tapered front end and relied on O-Rings (Ref No 160) to dampen movement. Current Elevating Screw (Ref No 159) has a shoulder at front end and requires a Nylon Screw (Ref No 132) and Jam Nut (Ref No 131) to dampen movement. Early and Current Elevating Screws are **not** interchangeable.

FENCE REPLACEMENT PARTS

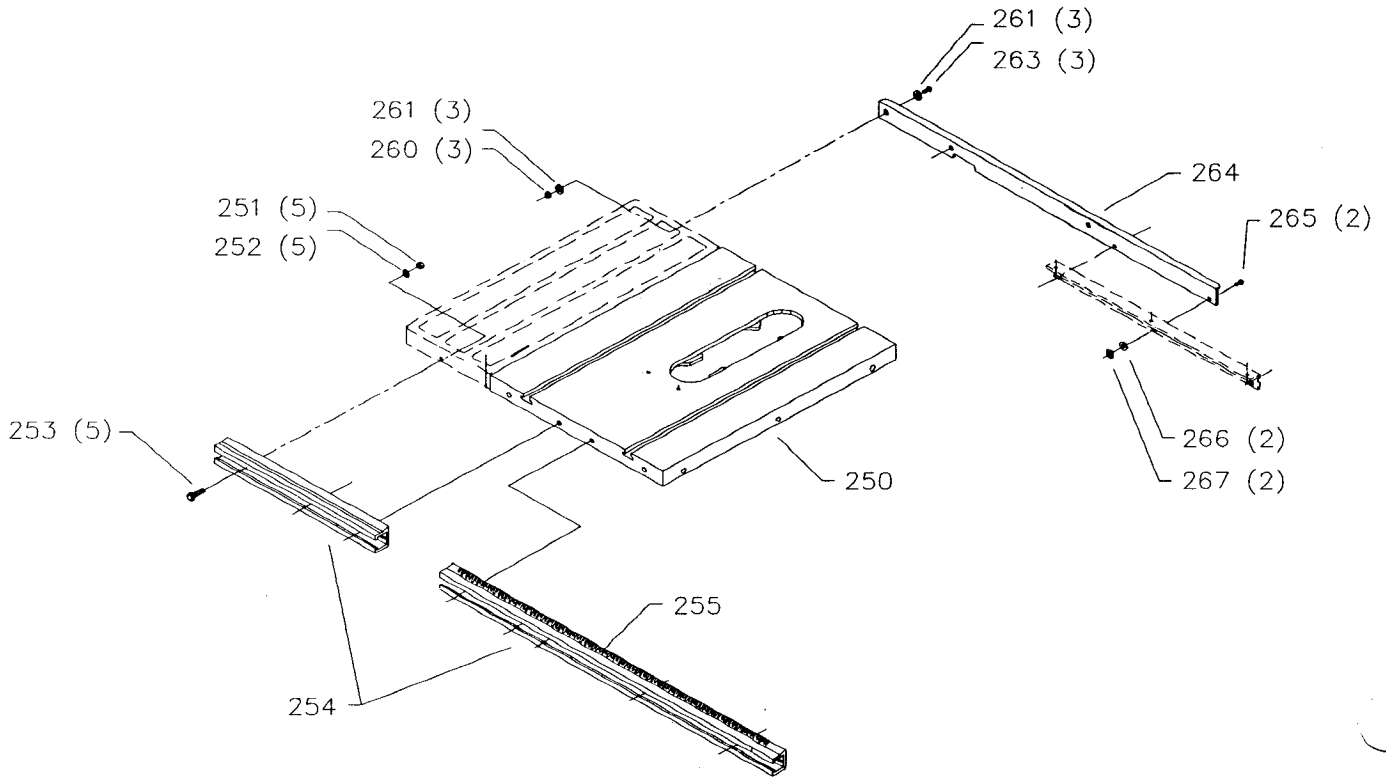
FOR USE ON 36-630 MODELS ONLY



REF NO	PART NUMBER	DESCRIPTION
200	422-39-055-0002	REAR RAIL
201	902-01-010-1300	5/16-18 HEX NUT
202	904-01-010-1620	FLAT WASHER
203	422-39-104-0005	SPACER
204	901-03-010-0770	5/16-18 X 1 1/4" HEX SOC HD SCREW
205	422-39-355-0001	FRONT RAIL ASSY, INCL:
206	422-39-432-0001	SCALE
207	901-03-010-3371	5/16-18 X 1 3/4" HEX SOC HD SCREW
210	422-35-391-0001	TABLE
*	422-39-343-0002	FENCE ASSY, INCL:
215	422-39-043-0001	FENCE
216	901-01-060-0677	3/8-24 X 1/2" HEX HD SCREW
217	904-01-033-1451	FLAT WASHER
218	422-39-012-0001	FENCE BODY
219	422-39-019-0002	CAM
220	905-01-010-5077	5/16" X 1 1/4" SPRING PIN
221	422-39-138-0003	HANDLE
222	901-01-060-0644	3/8-16 X 2 1/2" HEX HD SCREW
223	901-05-163-1126	#08-32 X 5/16" PAN HD SCREW
224	422-39-375-0003	CURSOR
225	422-39-067-0004	LEVER
226	905-01-010-5077	5/16" X 1 1/4" SPRING PIN
227	902-05-000-2919	NUT
228	422-39-084-0002	SLIDE
229	901-02-443-1708	1/4-20 X 1/2" PAN HD SCREW
230	902-01-212-2409	1/4-20 LOCK NUT
231	422-39-027-0002	REAR FENCE CLAMP
232	422-39-122-0001	SPRING
233	422-39-108-0001	ROD

* NOT SHOWN ASSEMBLED

FENCE REPLACEMENT PARTS* FOR USE ON 36-640 MODELS ONLY



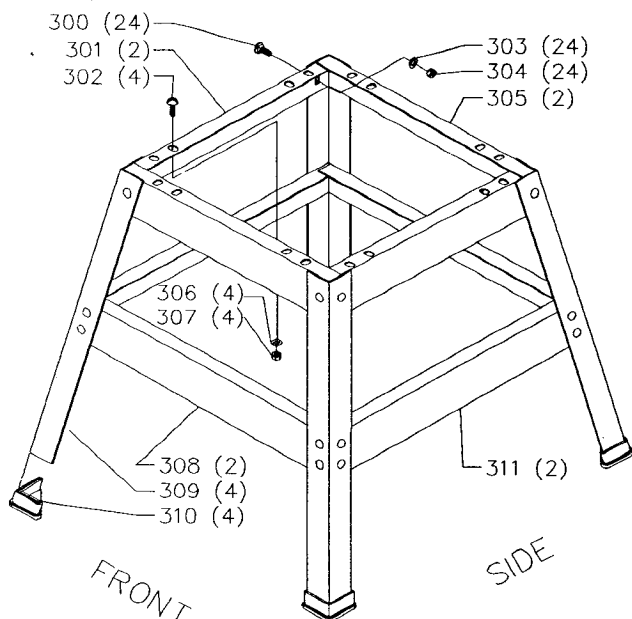
<u>REF NO</u>	<u>PART NUMBER</u>	<u>DESCRIPTION</u>
250	422-39-091-0007	TABLE
251	902-01-010-1207	3/8-24 HEX NUT
252	904-01-010-1615	FLAT WASHER
253	901-01-060-0673	3/8-24 X 1 1/4" HEX HD SCREW
254	422-39-355-0002	FENCE RAIL, INCL: (See Service Note E)
255	422-39-432-0001	SCALE (See Service Note F)
260	902-01-010-1207	3/8-24 HEX NUT
261	904-01-010-1615	FLAT WASHER
263	901-01-060-0673	3/8-24 X 1 1/4" HEX HD SCREW
264	422-39-089-0031	REAR SUPPORT
265	901-11-020-0821	1/4-20 X 3/4" CARRIAGE HD SCREW
266	904-01-010-1614	FLAT WASHER
267	902-02-040-1306	1/4-20 SQUARE NUT

***REFER TO PARTS LIST NO. CS-11 FOR ADDITIONAL PRECISION SAW GUIDE PARTS LISTINGS**

Service Note:

*E - The two piece front rail (Ref No. 254) provided with the 36-640 version of the Contractor Saw II is serviced as a single interchangeable rail with scale.
F - Scale is provided oversized and must be cut to proper length.*

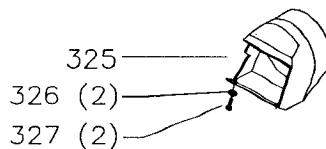
REPLACEMENT PARTS



REF NO	PART NUMBER	DESCRIPTION
	422-39-626-0004	STAND ASSY, CONST OF:
300	901-11-023-1476	5/16-18 X 5/8" CARRIAGE HD SCREW
301	422-39-014-0001	BRACKET (20.2")
302	901-11-023-1476	5/16-18 X 5/8" CARRIAGE HD SCREW
303	904-01-010-1620	FLAT WASHER
304	902-01-010-1300	5/16-18 HEX NUT
305	422-39-014-0002	BRACKET (17.1")
306	904-01-010-1620	FLAT WASHER
307	902-01-010-1300	5/16-18 HEX NUT
308	427-99-014-0085	BRACKET (21.23")
309	427-99-066-0042	LEG
310	427-99-048-0001	FOOT
311	427-99-014-0083	BRACKET (24.1")

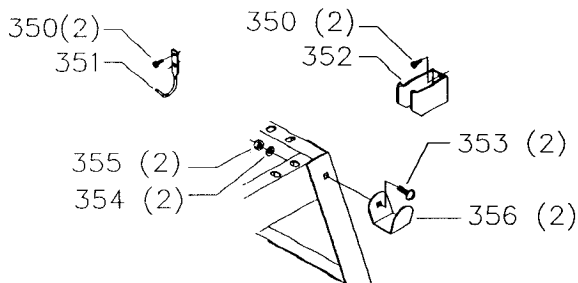
ITEMS LISTED BELOW AVAILABLE AS ACCESSORIES

REF NO	PART NUMBER	DESCRIPTION
325	36-633	DUST CHUTE, INCL:
26	904-01-010-1614	FLAT WASHER
27	901-01-060-0603	1/4-20 X 7/8" HEX HD SCREW



36-633
DUST CHUTE

36-634 CABINET HARDWARE



REF NO	PART NUMBER	DESCRIPTION
	36-634	CABINET HARDWARE, CONST OF:
350	901-05-213-1498	#10 X 1/2" HEX WASHER HD SCREW
351	422-35-060-0001	WRENCH HOOK
352	422-35-014-0001	MITER GAGE HOLDER
353	901-11-023-1476	5/16-18 X 5/8" CARRIAGE HD SCREW (Included with 422-39-626-0004 Stand)
354	904-01-010-1620	FLAT WASHER (Included with 422-39-626-0004 Stand)
355	902-01-010-1300	5/16-18 HEX NUT (Included with 422-39-626-0004 Stand)
356	422-39-060-0002	FENCE HOLDER

STANDARD SAFETY EQUIPMENT

In order to promote tool safety, Delta International Machinery Corp. strictly enforces the policy of repairing or replacing any damaged or missing standard safety equipment on machines presented to Delta Authorized Service Center for service/repairs. Any product which is presented to a Delta Authorized Service Center for repairs which contains missing or damaged standard safety equipment will have that equipment repaired or replaced and the customer will be charged for any such service/repairs. Customers can avoid such charges only if the missing safety component is supplied to the service center at the time of repair.

This parts list is provided to aid in obtaining service parts. Copies of the instruction and maintenance literature can be obtained through the Delta Technical Publications Department or through your local service outlet.