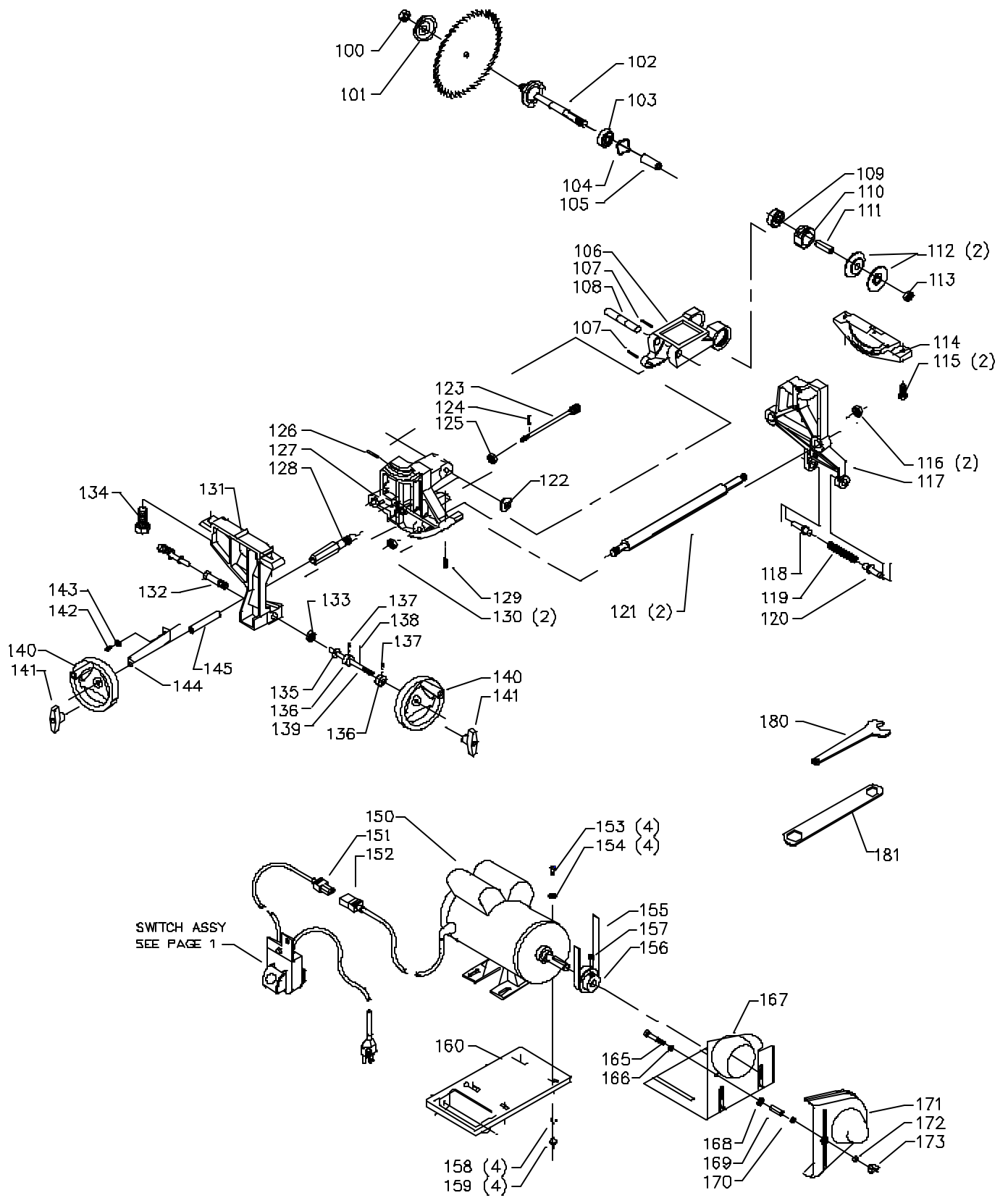


REPLACEMENT PARTS

Ref.	No.	Part No.	Description	Ref.	No.	Part No.	Description
*		34-412	BLADE GUARD ASSY, CONST OF:	54		422-19-089-0007	BRACKET
*		1086935	BLADE GUARD, CONST OF:	55		901-02-050-0704	5/16-18 X 5/8" FILL HD SCREW
1		1086334	"SEE THRU" GUARD	60		1231355	5/16-18 X 1/2" HEX WASHER HD SCREW
2		1086388	PUSH NUT CAP	*		422-19-626-0009	STAND ASSY (PLATINUM), INCL:
3		1087811	PIN	61		901-01-060-0606	5/16-18 X 5/8" HEX HD SCREW
4		1086388	PUSH NUT CAP	62		904-01-010-1620	FLAT WASHER
5		1086353	SPRING	63		904-02-010-1703	5/16" LOCK WASHER
6		422-16-047-0001	KICK BACK FINGER	64		902-01-010-1300	5/16-18 HEX NUT
7		422-04-071-0007	PIN	65		436-06-123-0003	REAR LEG PANEL (PLATINUM)
8		1086337	PIVOT BRACKET	66		436-06-026-0003	DUST CHUTE (PLATINUM)
9		1086387	PUSH NUT	67		436-06-423-0003	FRONT LEG PANEL (PLATINUM)
10		422-04-086-0002	SPLITTER W/BUSHING	68		1087794	RIVET
11		905-01-010-6729	5/32" X 11/16" SPRING PIN	69		422-19-132-0009	NAMEPLATE
12		901-11-023-1476	5/16-18 X 5/8" CARRIAGE HD SCREW	70		438-01-004-0097	BUSHING
13		422-19-089-0003	BRACKET	71		901-05-213-1498	#10 X 1/2" HEX WASHER HD SCREW
14		904-01-010-1620	FLAT WASHER	72		902-01-293-1513	#10-32 KEPS NUT
15		902-01-010-1300	5/16-18 HEX NUT	73		901-02-453-1123	#10-32 X 1/2" PAN HD SCREW
16		901-01-060-0626	1/4-20 X 3/4" HEX HD SCREW	74		427-99-048-0001	FOOT
17		904-01-010-1614	FLAT WASHER	75		438-01-004-0054	CABLE TIE
18		901-01-060-0649	5/16-18 X 1" HEX HD SCREW	76		901-03-033-1046	5/16-18 X 1" FLAT HD SCREW
19		422-03-072-0001	PLATE	77		902-01-010-1300	5/16-18 NUT
20		422-04-014-0037	SPLITTER BRACKET	78		904-01-010-1620	WASHER
21		901-03-010-0230	1/4-20 X 2" HEX SOC HD SCREW	*		34-895	MITER GAGE, CONST OF:
22		901-03-010-0755	1/4-20 X 3/4" HEX SOC HD SCREW	80		422-02-074-0001	SOLE PLUG
23		904-01-010-1614	FLAT WASHER	81		422-02-060-0003	HANDLE
25		36-933	EXTENSION WING, INCL:	82		904-07-010-5555	1/4" FIBER WASHER
26		901-01-060-0664	7/16-20 X 1" HEX HD SCREW	83		422-01-355-0004	MITER GAGE BODY, INCL:
27		904-10-031-2097	WASHER	84		901-04-150-1181	1/4-28 X 3/16" HEX SOC SET SCREW
*		438-01-317-0128	SWITCH KIT ASSY, CONST OF:	85		901-04-150-9428	#08-32 X 1/2" HEX SOC SET SCREW
32		422-39-067-0001	SWITCH ACTUATOR	86		422-04-004-0001	BAR, INCL:
33		438-01-317-0127	SWITCH	87		422-01-088-0004	STOP LINK
34		901-03-030-8013	1/4-20 X 3/4" FLAT HD SCREW	88		901-04-150-1181	1/4-28 X 3/16" HEX SOC SET SCREW
35		422-39-014-0022	SWITCH BOX COVER	89		422-01-075-0001	POINTER
36		422-19-001-0003	SWITCH PLATE	90		422-01-112-0001	SCREW
37		902-01-120-1034	1/4-20 HEX NUT	91		422-04-072-0001	PLATE
38		901-05-163-1229	#10-16 X 1/2" PAN HD SCREW	92		901-02-030-5750	1/4-28 X 5/16" FLAT HD SCREW
39		422-39-013-0001	SWITCH BOX				
40		901-05-163-1126	#08-32 X 5/16" PAN HD SCREW	*		NOT SHOWN ASSEMBLED	
41		438-01-302-0671	CORD W/FEMALE DISCONNECT (SEE NOTE				
42		438-01-302-0672	CORD SET (SEE NOTE A)				
45		34-154	TABLE INSERT, INCL:				
46		901-04-461-5297	1/4-28 X 3/8" HEX SOC SET SCREW				
47		901-04-293-1395	5/16-18 X 3/4" HEX SOC SET SCREW				
48		422-35-391-0001	TABLE				
49		422-19-318-0009	CABINET ASSY (PLATINUM), INCL:				
50		422-19-754-0001	WARNING LABEL				
50A		422-19-754-0003	WARNING LABEL				
51		1087794	RIVET				
52		422-19-132-0006	NAMEPLATE				
53		902-01-503-1514	5/16-18 FLANGE NUT				

SERVICE NOTES:

A – When installing power cords, (Ref No 41 & 42), into the switch box, take care to ensure that the cords outer insulating jacket passes through the switch box cord clamp area before tightening the switch box assembly screws.



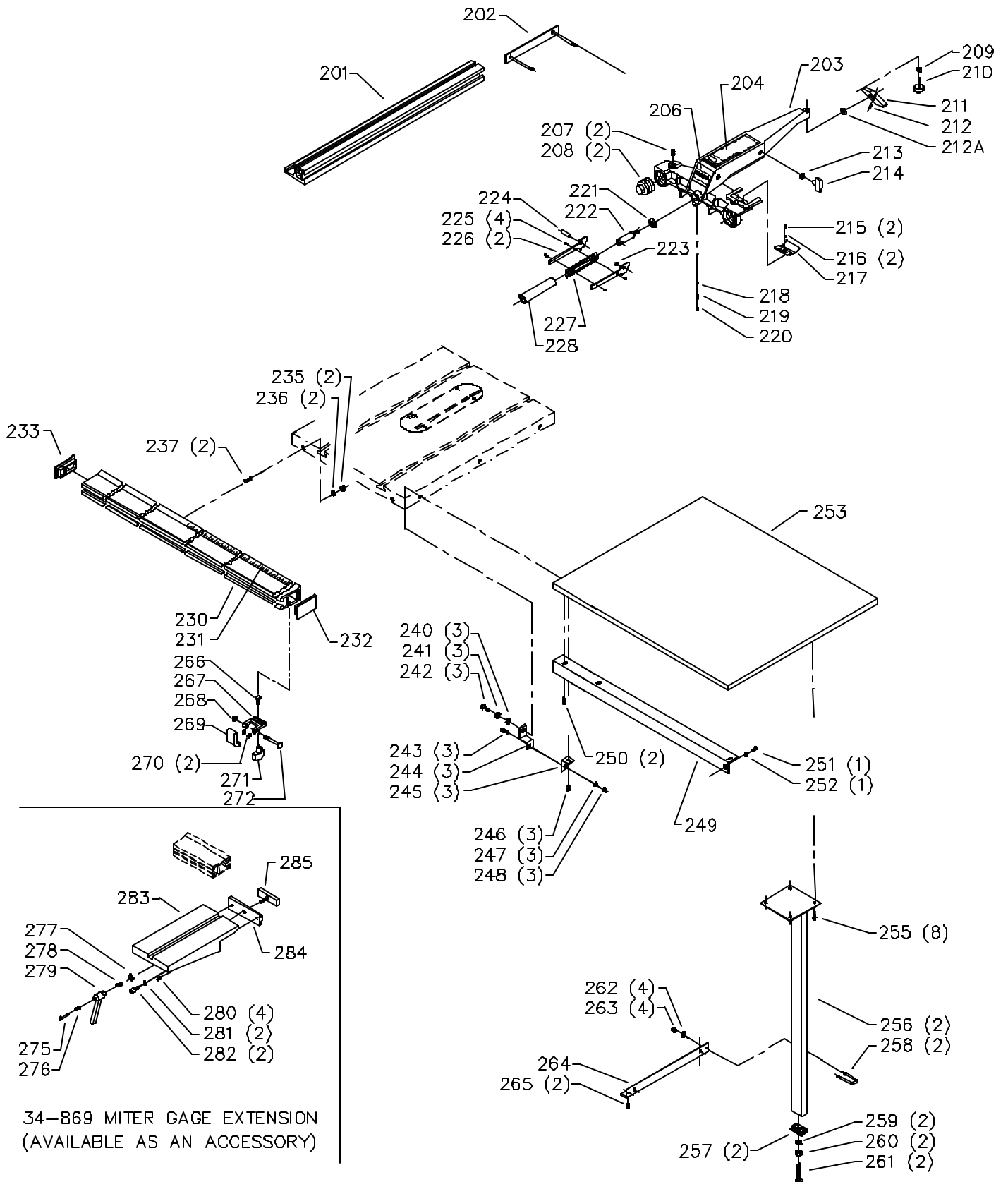
REPLACEMENT PARTS

Ref. No.	Part No.	Description	Ref. No.	Part No.	Description
100	902-01-200-9848	ARBOR NUT-LH	141	422-19-138-0003	KNOB
101	422-04-103-5001	FLANGE	142	901-03-010-3309	1/4-20 X 5/8" HEX SOC HD SCREW
102	422-19-303-0002	ARBOR ASSY	143	904-01-010-1614	FLAT WASHER
103	1086894	BALL BEARING	144	422-19-075-0001	POINTER
104	928-06-020-7382	LOAD SPRING	145	422-19-104-0001	SPACER
105	1087857	SPACER	150	62-044	MOTOR ASSY, INCL:
106	422-02-014-0017	ARBOR BRACKET	151	438-01-302-0671	CORD W/FEMALE DISCONNECTOR (SEE NC
107	905-01-010-2710	3/16" X 7/8" SPRING PIN	152	438-01-302-0661	CORD W/MALE CONNECTOR (SEE NOTE B)
108	952-01-101-3267	ARBOR BRACKET SHAFT	153	901-11-020-0834	5/16-18 X 3/4" CARRIAGE HD SCREW
109	1086894	BALL BEARING	154	904-01-010-1620	FLAT WASHER
110	902-07-020-7176	BEARING CLOSURE NUT	155	49-034	BELT
111	422-19-104-0005	SPACER	156	926-01-041-9366	MOTOR PULLEY (2-1/4" O.D.), INCL:
112	422-19-130-0001	PULLEY HALF	157	901-04-150-0206	5/16-18 X 5/16" HEX SOC SET SCREW
113	902-01-020-1226	5/8-18 JAM NUT	158	904-03-030-1656	5/16" EXT TOOTH WASHER
114	422-02-014-0010	REAR TRUNNION BRACKET	159	902-01-010-1300	5/16-18 HEX NUT
115	901-02-763-1526	5/16-18 X 7/8" HEX WASHER HD SCREW	160	422-02-089-0005	MOTOR PLATE
116	902-01-283-1393	5/8-18 LOCK NUT	*	34-965	BELT AND PULLEY GUARD, CONST OF:
117	422-19-095-0004	REAR TRUNNION	165	901-01-060-3124	1/4-20 X 1 1/2" HEX HD SCREW
118	422-19-071-0002	PIN	166	904-03-030-1757	1/4" EXT TOOTH WASHER
119	422-19-122-0001	SPRING	167	1088314	PLATE
120	422-19-071-0002	PIN	168	904-01-010-1614	FLAT WASHER
121	422-19-004-0002	TIE BAR	169	424-03-017-0003	SPACER
122	928-06-013-1779	11/16" WAVE WASHER	170	902-01-120-1034	1/4-20 HEX NUT
123	422-35-406-0001	ELEVATING SHAFT ASSY, INCL:	171	1088315	COVER
**	905-01-010-2716	1/8" X 9/16" SPRING PIN	172	904-03-030-1757	1/4" EXT TOOTH WASHER
124	905-01-010-2711	1/8" X 5/8" SPRING PIN	173	902-04-010-1402	1/4-20 WING NUT
125	902-01-020-1226	5/8-18 JAM NUT	180	955-01-050-1472	WRENCH
126	905-01-010-2706	3/16" X 1" SPRING PIN	181	422-39-101-0001	WRENCH 7/8" X 1/2"
127	422-35-095-0001	FRONT TRUNNION			
128	422-35-105-0001	SLEEVE	*	NOT SHOWN ASSEMBLED	
129	901-04-141-9152	1/4-20 X 5/16" HEX SOC SET SCREW	**	NOT SHOWN	
130	902-01-283-1393	5/8-18 LOCK NUT			
131	1087233	FRONT TRUNNION BRACKET, INCL:			
132	422-35-042-0001	ECCENTRIC			
133	902-01-020-9145	9/16-18 HEX NUT			
134	901-02-763-1526	5/16-18 X 7/8" HEX WASHER HD SCREW			
135	904-07-010-5554	3/8" FIBER WASHER			
136	426-03-388-0001	SET COLLAR ASSY			
137	901-04-150-0208	1/4-20 X 1/4" HEX SOC SET SCREW			
138	905-01-010-2711	1/8" X 5/8" SPRING PIN			
139	1087893	TILT SHAFT ASSY, INCL:			
**	905-01-010-2716	1/8" X 9/16" SPRING PIN			
140	1086491	HANDWHEEL ASSY			

SERVICE NOTES:

A – When installing power cords, (Ref No 151 & 152), into the switch box, take care to ensure that the cords outer insulating jacket passes through the switch box cord clamp area before tightening the switch box assembly screws.

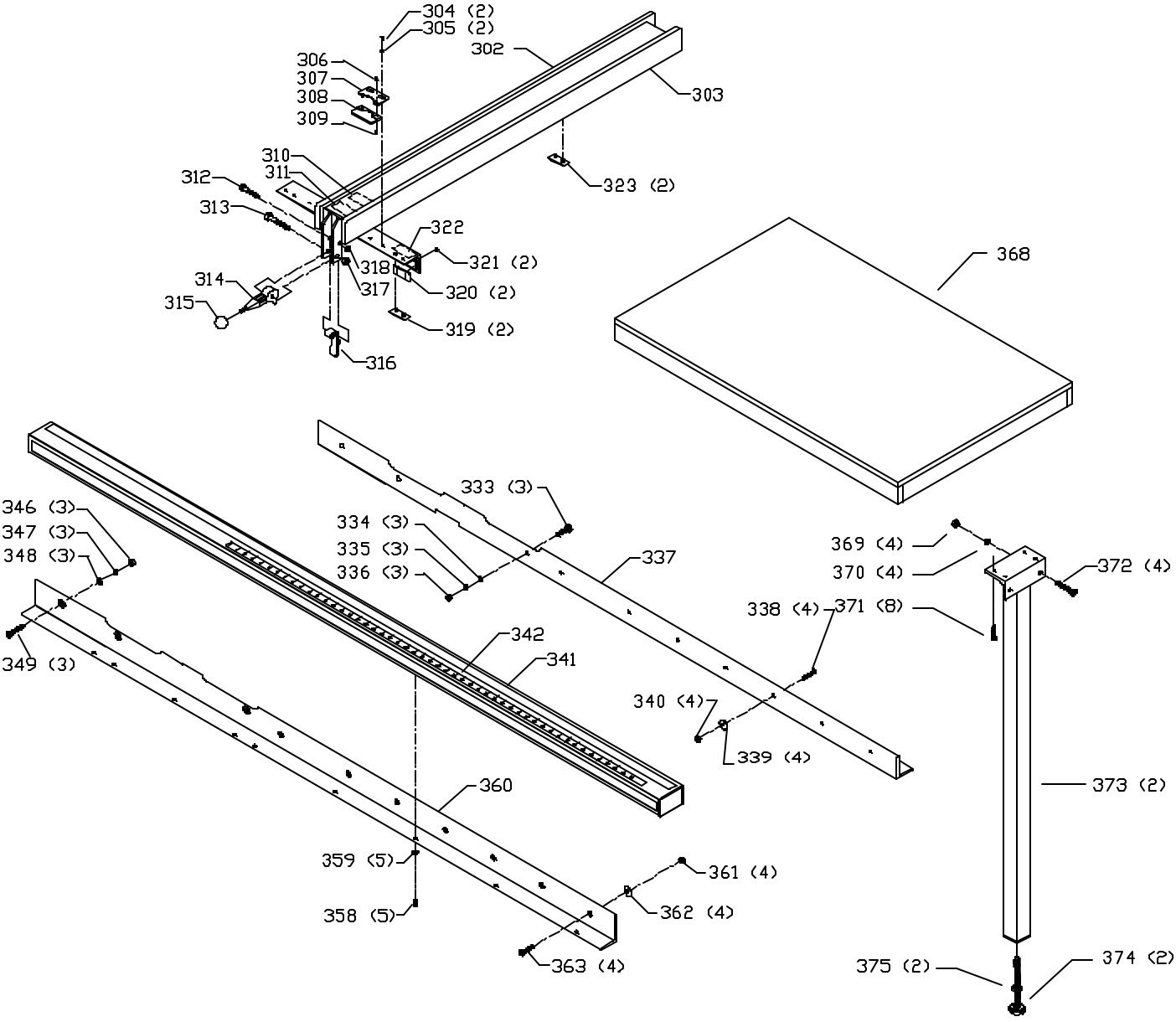
FENCE FOR MODEL 36-477



REPLACEMENT PARTS

Ref.	No.	Part No.	Description	Ref.	No.	Part No.	Description
	201	34-916	33" FENCE		251	901-01-060-0612	1/4-20 X 5/8" HEX HD SCREW
	202	400-06-327-0001	CLAMP ASSY		252	904-01-010-1614	FLAT WASHER
	203	422-27-312-0002	FENCE BODY ASSY (PLATINUM), INCL:		253	36-936	TABLE BOARD
	204	422-27-754-0009	LABEL		255	901-25-043-1791	SCREW
	206	422-27-754-0007	LABEL		256	422-39-366-0004	LEG ASSY (PLATINUM)
	207	422-39-112-0005	LEVELING SCREW		257	422-39-001-0008	LEG ADAPTER
	208	422-39-048-0001	ADJUSTMENT PLUG		258	422-39-112-0006	U-BOLT
	209	902-01-010-1300	5/16-18 HEX NUT		259	904-01-010-1615	FLAT WASHER
	210	422-27-048-0001	REAR SUPPORT FOOT		260	902-01-010-5900	3/8-16 JAM NUT
	211	422-27-068-0003	LOCKING LUG		261	901-09-131-5295	LEVELING SCREW
	212	905-01-010-2702	1/4" X 5/8" SPRING PIN		262	904-01-010-1614	FLAT WASHER
	212A	908-25-013-1808	O-RING		263	902-01-120-1034	1/4-20 HEX NUT
	213	904-01-010-1620	FLAT WASHER		264	422-39-089-0041	SHELF SUPPORT (PLATINUM)
	214	424-12-060-0005	KNOB		265	901-25-043-1791	SCREW
	215	901-02-443-1812	#08-32 X 1/2" PAN HD SCREW		*	36-899	FLIP STOP, CONST OF:
	216	904-01-013-1738	3/16" FLAT WASHER		266	901010600649	5/16-18 X 1.00 HEX HEAD SCREW
	217	400-06-375-0002	CURSORS		267	422270840007	BRACKET
	218	921-01-110-0001	BALL		268	902012122409	LOCKNUT
	219	928-01-250-0001	SPRING		269	422270880002	FLIP STOP
	220	901-04-150-9440	1/4-20 X 1/2" HEX SOC SET SCREW		270	904070105573	WASHER
	221	422-27-104-0002	THRUST WASHER		271	424120600005	KNOB 2" 5/16-18
	222	422-39-106-0002	SHAFT		272	901010600622	1/4-20 X 2" HEX HEAD SCREW
	223	908-25-013-1756	O-RING				AVAILABLE AS AN ACCESSORY
	224	905-01-103-1370	5/16" X 1 1/4" SPRING PIN		*	34-869	MITER GAGE EXTENSION, CONST OF:
	225	901-05-163-1229	#10-16 X 1/2" PAN HD SCREW		275	1340935	SPECIAL SCREW
	226	422-39-019-0001	CAM HANDLE		276	1340934	SPRING
	227	422-39-138-0002	HANDLE		277	1340931	WASHER
	228	422-39-105-0001	GRIP		278	1340932	SPECIAL SCREW
	230	422-27-055-0008	FRONT GUIDE RAIL, INCL:		279	1340933	HANDLE
	231	400-06-432-0001	SCALE KIT (SEE NOTE C)		280	1246010	(DIN 913) M8 X 16MM HEX SOC SET SCREW
	232	422-27-020-0004	END CAP (RH)		281	904-01-010-1605	3/8" FLAT WASHER
	233	422-27-020-0003	END CAP (LH)		282	1246074	(DIN 912) M10 X 30MM HEX SOC HD SCREW
	234	902-01-010-1207	3/8-24 HEX NUT		283	1340926	TABLE
	235	902-01-020-5433	3/8-16 JAM NUT		284	1340927	ADJUSTING BLOCK
	236	904-01-010-1615	FLAT WASHER		285	1340928	ANCHOR BLOCK
	237	901-01-060-0642	STUD				NOT SHOWN ASSEMBLED
	240	904-01-010-1638	FLAT WASHER				
	241	904-02-010-1716	1/4" LOCK WASHER				
	242	901-01-060-0680	7/16-20 X 3/4" HEX HD SCREW				
	243	901-11-020-0821	1/4-20 X 3/4" CARRIAGE HD SCREW				
	244	422-27-014-0003	ADAPTER				
	245	422-27-089-0007	ANGLE BRACKET				
	246	901-25-043-1791	SCREW				
	247	904-01-010-1614	FLAT WASHER				
	248	902-01-120-1034	1/4-20 HEX NUT				
	249	422-27-089-0016	TABLE SUPPORT (PLATINUM)				
	250	901-25-043-1791	SCREW				

FENCE FOR MODEL 36-485



REPLACEMENT PARTS

Ref.			Ref.		
No.	Part No.	Description	No.	Part No.	Description
*	78-947	FENCE ASSY, INCL:	341	1358009	GUIDE TUBE ASSY (30"), INCL:
302	1358004	LEFT BOARD KIT (SEE NOTE A)	342	79-064	SCALE (SEE B)
303	1358005	RIGHT BOARD KIT (SEE NOTE A)	346	1350291	3/8-16 HEX NUT
304	1350275	#10-32 X 3/8" ROUND HD SCREW	347	1350288	3/8" LOCK WASHER
305	1350276	FLAT WASHER	348	1350286	FLAT WASHER
306	1350315	#10-32 HEX NUT	349	1352011	3/8-16 X 1 1/2" FLAT HD SCREW
307	1350049	CURSOR MOUNT	358	1350295	1/4-20 X 1/2" HEX HD SCREW
308	1350048	CURSOR	359	1350293	1/4" LOCK WASHER
309	1350316	#10-32 X 1/2" FLAT HD SCREW	360	1358007	FRONT RAIL (30")
310	1350077	FLAG DECAL	361	1350284	1/4-20 HEX NUT
311	1350156	NAMEPLATE	362	1350317	1/4" FLAT WASHER
312	1350277	1/4-20 X 1 3/4" HEX HD SCREW	363	1350289	1/4-20 X 1 1/2" FLAT HD SCREW
313	1350278	SPECIAL SCREW	368	78-949	RIGHT EXT 30IN WHL
314	1352410	CAM HANDLE ASSY	369	1350284	1/4-20 HEX NUT
315	1350050	KNOB	370	1350283	1/4" FLAT WASHER
316	1352412	CAM FOOT ASSY	371	1350439	#08 X 5/8" PAN HD SCREW
317	1350279	3/8-16 LOCK NUT	372	1350289	1/4-20 X 1 1/2" FLAT HD SCREW
318	1350280	1/4-20 LOCK NUT	373	8006	LEG ASSY
319	1350019	GLIDE PAD	374	1350194	LEVELING ASSY
320	1350051	GLIDE PAD	375	1350291	3/8-16 HEX NUT
321	1350492	3/8-16 X 5/16" HEX SOC SET SCREW			
322	1350155	DECAL	*		NOT SHOWN ASSEMBLED
323	1350019	GLIDE PAD			
333	1350285	3/8-24 X 1 1/4" HEX HD SCREW			
334	1350286	FLAT WASHER			
335	1350288	3/8" LOCK WASHER			
336	1350287	3/8-24 HEX NUT			
337	1358008	REAR RAIL (30")			
338	1350289	1/4-20 X 1 1/2" FLAT HD SCREW			
339	1350317	1/4" FLAT WASHER			
340	1350284	1/4-20 HEX NUT			

SERVICE NOTES:

A – Kit includes: Board, Laminate, T- Edging and Hardware.

B – Scale is provided oversize and must be cut ot proper length.

STANDARD SAFETY EQUIPMENT

In order to promote tool safety, Delta Machinery strictly enforces the policy of repairing or replacing any damaged or missing standard safety equipment on machines presented to Delta Authorized Service Centers for service/repairs. Any product which is presented to a Delta Authorized Service Centers for repairs which contains missing or damaged standard safety equipment will have that equipment repaired or replaced and the customer will be charged for any such service/repairs. Customers can avoid such charges only if the missing safety component is supplied to the service center at the time of repair.

This parts list is provided to aid in obtaining service parts. Copies of the instruction and maintenance literature can be obtained through the Delta Technical Publications Department or through your service outlet.