

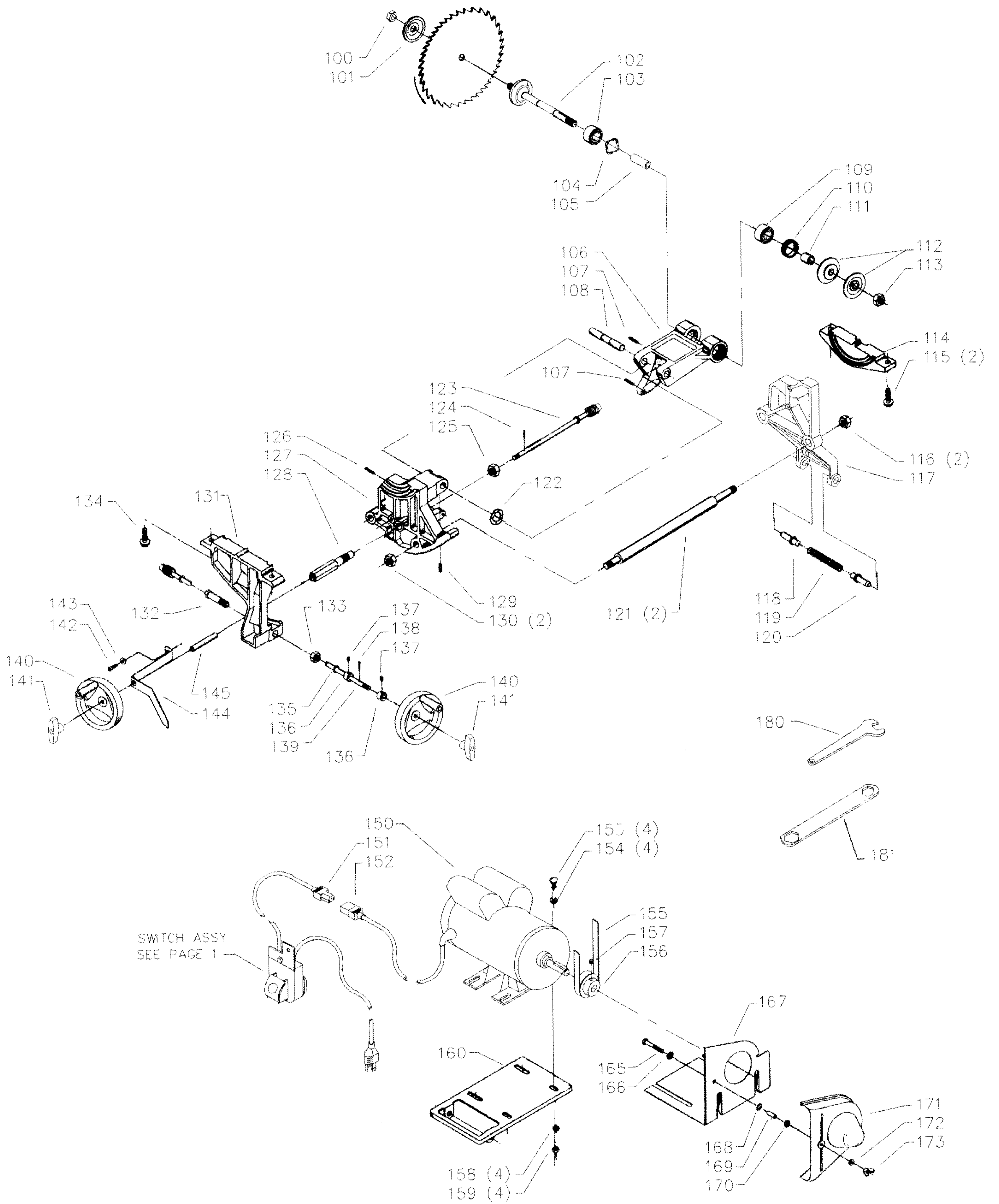
REPLACEMENT PARTS

<u>REF. NO.</u>	<u>PART NUMBER</u>	<u>DESCRIPTION</u>	<u>REF. NO.</u>	<u>PART NUMBER</u>	<u>DESCRIPTION</u>
*	34-412	BLADE GUARD ASSY, CONST OF:	47	901-04-293-1395	5/16-18 X 3/4" HEX SOC SET SCR
*	1086935	BLADE GUARD, CONST OF:	48	422-35-391-0001	TABLE
1	1086334	"SEE THRU" GUARD	49	422-19-318-0009	CABINET ASSY (PLATINUM), INCL:
2	1086388	PUSH NUT CAP	50	422-19-754-0001	WARNING LABEL
3	1087811	PIN	50A	422-19-754-0003	WARNING LABEL (CMO)
4	1086388	PUSH NUT CAP	51	1087794	RIVET
5	1086353	SPRING	52	422-19-132-0006	NAMEPLATE
6	422-16-047-0001	KICK BACK FINGER	53	902-01-503-1514	5/16-18 FLANGE NUT
7	422-04-071-0007	PIN	54	422-19-089-0007	BRACKET
8	1086337	PIVOT BRACKET	55	901-02-050-0704	5/16-18 X 5/8" FILL HD SCR
9	1086387	PUSH NUT	60	1231355	5/16-18 X 1/2" HEX WASHER HD SCR
10	422-04-086-0002	SPLITTER W/BUSHING	*	422-19-626-0009	STAND ASSY (PLATINUM), INCL:
11	905-01-010-6729	5/32" X 11/16" SPRING PIN	61	901-01-060-0606	5/16-18 X 5/8" HEX HD SCR
12	901-11-023-1476	5/16-18 X 5/8" CARRIAGE HD SCR	62	904-01-010-1620	FLAT WASHER
13	422-19-089-0003	BRACKET	63	904-02-010-1703	5/16" LOCK WASHER
14	904-01-010-1620	FLAT WASHER	64	902-01-010-1300	5/16-18 HEX NUT
15	902-01-010-1300	5/16-18 HEX NUT	65	436-06-123-0003	REAR LEG PANEL (PLATINUM)
16	901-01-060-0626	1/4-20 X 3/4" HEX HD SCR	66	436-06-026-0003	DUST CHUTE (PLATINUM)
17	904-01-010-1614	FLAT WASHER	67	436-06-423-0003	FRONT LEG PANEL (PLATINUM), INCL:
18	901-01-060-0649	5/16-18 X 1" HEX HD SCR	68	1087794	RIVET
19	422-03-072-0001	PLATE	69	422-19-132-0009	NAMEPLATE
20	422-04-014-0037	SPLITTER BRACKET	70	438-01-004-0097	BUSHING
21	901-03-010-0230	1/4-20 X 2" HEX SOC HD SCR	71	901-05-213-1498	#10 X 1/2" HEX WASHER HD SCR
22	901-03-010-0755	1/4-20 X 3/4" HEX SOC HD SCR	72	902-01-293-1513	#10-32 KEPS NUT
23	904-01-010-1614	FLAT WASHER	73	901-02-453-1123	#10-32 X 1/2" PAN HD SCR
25	36-933	EXTENSION WING, INCL:	74	427-99-048-0001	FOOT
26	901-01-060-0664	7/16-20 X 1" HEX HD SCR	75	438-01-004-0054	CABLE TIE
27	904-10-031-2097	WASHER	*	34-895	MITER GAGE, CONST OF:
*	438-01-317-0128	SWITCH KIT ASSY, CONST OF:	80	422-02-074-0001	HOLE PLUG
32	422-39-067-0001	SWITCH ACTUATOR	81	422-02-060-0003	HANDLE
33	438-01-317-0127	SWITCH	82	904-07-010-5555	1/4" FIBER WASHER
34	901-03-030-8013	1/4-20 X 3/4" FLAT HD SCR	83	422-01-355-0004	MITER GAGE BODY, INCL:
35	422-39-014-0022	SWITCH BOX COVER	84	901-04-150-1181	1/4-28 X 3/16" HEX SOC SET SCR
36	422-19-001-0003	SWITCH PLATE	85	901-04-150-9428	#08-32 X 1/2" HEX SOC SET SCR
37	902-01-120-1034	1/4-20 HEX NUT	86	422-04-004-0001	BAR, INCL:
38	901-05-163-1229	#10-16 X 1/2" PAN HD SCR	87	422-01-088-0004	STOP LINK
39	422-39-013-0001	SWITCH BOX	88	901-04-150-1181	1/4-28 X 3/16" HEX SOC SET SCR
40	901-05-163-1126	#08-32 X 5/16" PAN HD SCR	89	422-01-075-0001	POINTER
41	438-01-302-0671	CORD W/FEMALE DISCONNECT (SEE NOTE A)	90	422-01-112-0001	SCR
42	438-01-302-0672	CORD SET (SEE NOTE A)	91	422-04-072-0001	PLATE
45	34-154	TABLE INSERT, INCL:	92	901-02-030-5750	1/4-28 X 5/16" FLAT HD SCR
46	901-04-461-5297	1/4-28 X 3/8" HEX SOC SET SCR			

* NOT SHOWN ASSEMBLED
CMO = CURRENT MODELS ONLY

SERVICE NOTES:

A - When installing power cords, (Ref No 41 & 42), into the switch box, take care to ensure that the cords outer insulating jacket passes through the switch box cord clamp area before tightening the switch box assembly screws.



REPLACEMENT PARTS

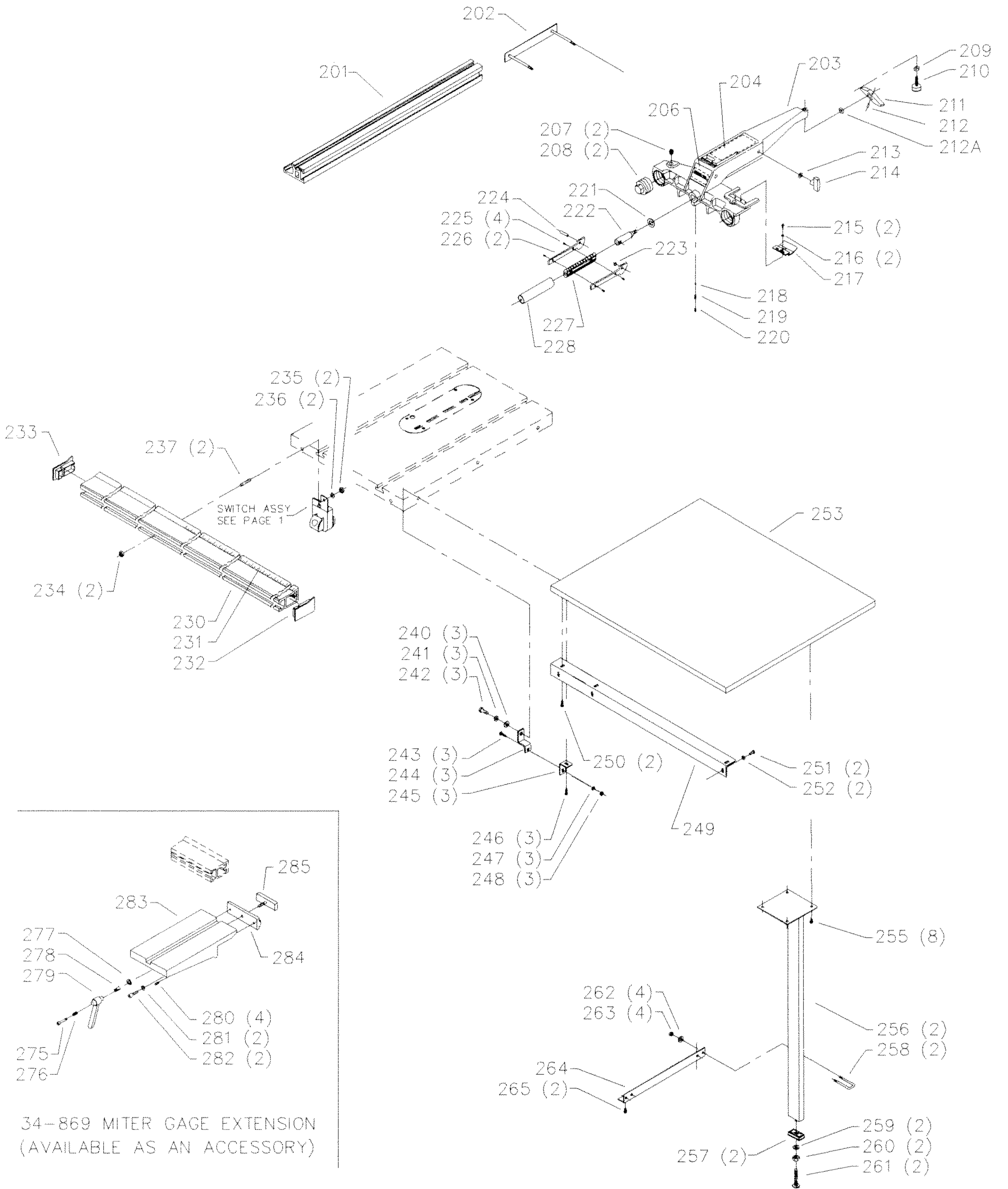
<u>REF. NO.</u>	<u>PART NUMBER</u>	<u>DESCRIPTION</u>	<u>REF. NO.</u>	<u>PART NUMBER</u>	<u>DESCRIPTION</u>
100	902-01-200-9848	ARBOR NUT-LH	136	426-03-388-0001	SET COLLAR ASSY, <i>INCL:</i>
101	422-04-103-5001	FLANGE	137	901-04-150-0208	1/4-20 X 1/4" HEX SOC SET SCR
102	422-19-303-0002	ARBOR ASSY	138	905-01-010-2711	1/8" X 5/8" SPRING PIN
103	1086894	BALL BEARING	139	1087893	TILT SHAFT ASSY, <i>INCL:</i>
104	928-06-020-7382	LOAD SPRING	**	905-01-010-2716	1/8" X 9/16" SPRING PIN
105	1087857	SPACER	140	1086491	HANDWHEEL ASSY
106	422-02-014-0017	ARBOR BRACKET	141	422-19-138-0003	KNOB
107	905-01-010-2710	3/16" X 7/8" SPRING PIN	142	901-03-010-3309	1/4-20 X 5/8" HEX SOC HD SCR
108	952-01-101-3267	ARBOR BRACKET SHAFT	143	904-01-010-1614	FLAT WASHER
109	1086894	BALL BEARING	144	422-19-075-0001	POINTER
110	902-07-020-7176	BEARING CLOSURE NUT	145	422-19-104-0001	SPACER
111	422-19-104-0005	SPACER	150	62-044	MOTOR ASSY, <i>INCL:</i>
112	422-19-130-0001	PULLEY HALF	151	438-01-302-0671	CORD <i>W/FEMALE DISCONNECTOR</i> (<i>SEE NOTE B</i>)
113	902-01-020-1226	5/8-18 JAM NUT	152	438-01-302-0661	CORD <i>W/MALE CONNECTOR</i> (<i>SEE NOTE B</i>)
114	422-02-014-0010	REAR TRUNNION BRACKET	153	901-11-020-0834	5/16-18 X 3/4" CARRIAGE HD SCR
115	901-02-763-1526	5/16-18 X 7/8" HEX WASHER HD SCR	154	904-01-010-1620	FLAT WASHER
116	902-01-283-1393	5/8-18 LOCK NUT	155	49-034	BELT
117	422-19-095-0004	REAR TRUNNION	156	926-01-041-9366	MOTOR PULLEY (2-1/4" O.D.), <i>INCL:</i>
118	422-19-071-0002	PIN	157	901-04-150-0206	5/16-18 X 5/16" HEX SOC SET SCR
119	422-19-122-0001	SPRING	158	904-03-030-1656	5/16" EXT TOOTH WASHER
120	422-19-071-0002	PIN	159	902-01-010-1300	5/16-18 HEX NUT
121	422-19-004-0002	TIE BAR	160	422-02-089-0005	MOTOR PLATE
122	928-06-013-1779	11/16" WAVE WASHER	*	34-965	BELT AND PULLEY GUARD, <i>CONST OF:</i>
123	422-35-406-0001	ELEVATING SHAFT ASSY, <i>INCL:</i>	165	901-01-060-3124	1/4-20 X 1 1/2" HEX HD SCR
**	905-01-010-2716	1/8" X 9/16" SPRING PIN	166	904-03-030-1757	1/4" EXT TOOTH WASHER
124	905-01-010-2711	1/8" X 5/8" SPRING PIN	167	1088314	PLATE
125	902-01-020-1226	5/8-18 JAM NUT	168	904-01-010-1614	FLAT WASHER
126	905-01-010-2706	3/16" X 1" SPRING PIN	169	424-03-017-0003	SPACER
127	422-35-095-0001	FRONT TRUNNION	170	902-01-120-1034	1/4-20 HEX NUT
128	422-35-105-0001	SLEEVE	171	1088315	COVER
129	901-04-141-9152	1/4-20 X 5/16" HEX SOC SET SCR	172	904-03-030-1757	1/4" EXT TOOTH WASHER
130	902-01-283-1393	5/8-18 LOCK NUT	173	902-04-010-1402	1/4-20 WING NUT
131	1087233	FRONT TRUNNION BRACKET, <i>INCL:</i>	180	955-01-050-1472	WRENCH
132	422-35-042-0001	ECCENTRIC	181	422-39-101-0001	WRENCH 7/8" X 1/2"
133	902-01-020-9145	9/16-18 HEX NUT			
134	901-02-763-1526	5/16-18 X 7/8" HEX WASHER HD SCR			
135	904-07-010-5554	3/8" FIBER WASHER			

* NOT SHOWN ASSEMBLED

** NOT SHOWN

SERVICE NOTES:

B - When installing power cords, (Ref No 151 & 152), into the switch box, take care to ensure that the cords outer insulating jacket passes through the switch box cord clamp area before tightening the switch box assembly screws.



34-869 MITER GAGE EXTENSION
(AVAILABLE AS AN ACCESSORY)

REPLACEMENT PARTS

REF. NO.	PART NUMBER	DESCRIPTION	REF. NO.	PART NUMBER	DESCRIPTION
201	34-916	33" FENCE	242	901-01-060-0680	7/16-20 X 3/4" HEX HD SCR
202	400-06-327-0001	CLAMP ASSY	243	901-11-020-0821	1/4-20 X 3/4" CARRIAGE HD SCR
203	422-27-312-0002	FENCE BODY ASSY (PLATINUM), INCL:	244	422-27-014-0003	ADAPTER
204	422-27-754-0009	LABEL	245	422-27-089-0007	ANGLE BRACKET
206	422-27-754-0007	LABEL	246	901-25-043-1791	SCR
207	422-39-112-0005	LEVELING SCR	247	904-01-010-1614	FLAT WASHER
208	422-39-048-0001	ADJUSTMENT PLUG	248	902-01-120-1034	1/4-20 HEX NUT
209	902-01-010-1300	5/16-18 HEX NUT	249	422-27-089-0016	TABLE SUPPORT (PLATINUM)
210	422-27-048-0001	REAR SUPPORT FOOT	250	901-25-043-1791	SCR
211	422-27-068-0003	LOCKING LUG	251	901-01-060-0612	1/4-20 X 5/8" HEX HD SCR
212	905-01-010-2702	1/4" X 5/8" SPRING PIN	252	904-01-010-1614	FLAT WASHER
212A	908-25-013-1808	O-RING	253	36-936	TABLE BOARD
213	904-01-010-1620	FLAT WASHER	255	901-25-043-1791	SCR
214	424-12-060-0005	KNOB	256	422-39-366-0004	LEG ASSY (PLATINUM)
215	901-02-443-1812	#08-32 X 1/2" PAN HD SCR	257	422-39-001-0008	LEG ADAPTER
216	904-01-013-1738	3/16" FLAT WASHER	258	422-39-112-0006	U-BOLT
217	400-06-375-0002	CURSOR	259	904-01-010-1615	FLAT WASHER
218	921-01-110-0001	BALL	260	902-01-010-5900	3/8-16 JAM NUT
219	928-01-250-0001	SPRING	261	901-09-131-5295	LEVELING SCR
220	901-04-150-9440	1/4-20 X 1/2" HEX SOC SET SCR	262	904-01-010-1614	FLAT WASHER
221	422-27-104-0002	THRUST WASHER	263	902-01-120-1034	1/4-20 HEX NUT
222	422-39-106-0002	SHAFT	264	422-39-089-0041	SHELF SUPPORT (PLATINUM)
223	908-25-013-1756	O-RING	265	901-25-043-1791	SCR
224	905-01-103-1370	5/16" X 1 1/4" SPRING PIN			
225	901-05-163-1229	#10-16 X 1/2" PAN HD SCR			
226	422-39-019-0001	CAM HANDLE			
227	422-39-138-0002	HANDLE			
228	422-39-105-0001	GRIP			
230	422-27-055-0005	FRONT GUIDE RAIL, INCL:			
231	400-06-432-0001	SCALE KIT (SEE NOTE C)			
232	422-27-020-0002	END CAP (RH)			
233	422-27-020-0001	END CAP (LH)			
234	902-01-010-1207	3/8-24 HEX NUT			
235	902-01-010-5900	3/8-16 JAM NUT			
236	904-01-010-1615	FLAT WASHER			
237	422-27-111-0003	STUD			
240	904-01-010-1638	FLAT WASHER			
241	904-02-010-1716	1/4" LOCK WASHER			

AVAILABLE AS AN ACCESSORY

*	34-869	MITER GAGE EXTENSION, CONST OF:
275	1340935	SPECIAL SCR
276	1340934	SPRING
277	1340931	WASHER
278	1340932	SPECIAL SCR
279	1340933	HANDLE
280	1246010	(DIN 913) M8 X 16MM HEX SOC SET SCR
281	904-01-010-1605	3/8" FLAT WASHER
282	1246074	(DIN 912) M10 X 30MM HEX SOC HD SCR
283	1340926	TABLE
284	1340927	ADJUSTING BLOCK
285	1340928	ANCHOR BLOCK

SERVICE NOTES:

C - Scale is provided oversized and must be cut to proper length.

STANDARD SAFETY EQUIPMENT

In order to promote tool safety, Delta International Machinery Corp. strictly enforces the policy of repairing or replacing any damaged or missing standard safety equipment on machines presented to Delta Authorized Service Centers for service/repair. Any product which is presented to a Delta Authorized Service Center for repairs which contains missing or damaged standard safety equipment will have that equipment repaired or replaced and the customer will be charged for any such service/repairs. Customers can avoid such charges only if the missing safety component is supplied to the service center at the time of repair.

This parts list is provided to aid in obtaining service parts. Copies of the instruction and maintenance literature can be obtained through the Delta Technical Publications Department or through your local service outlet.