



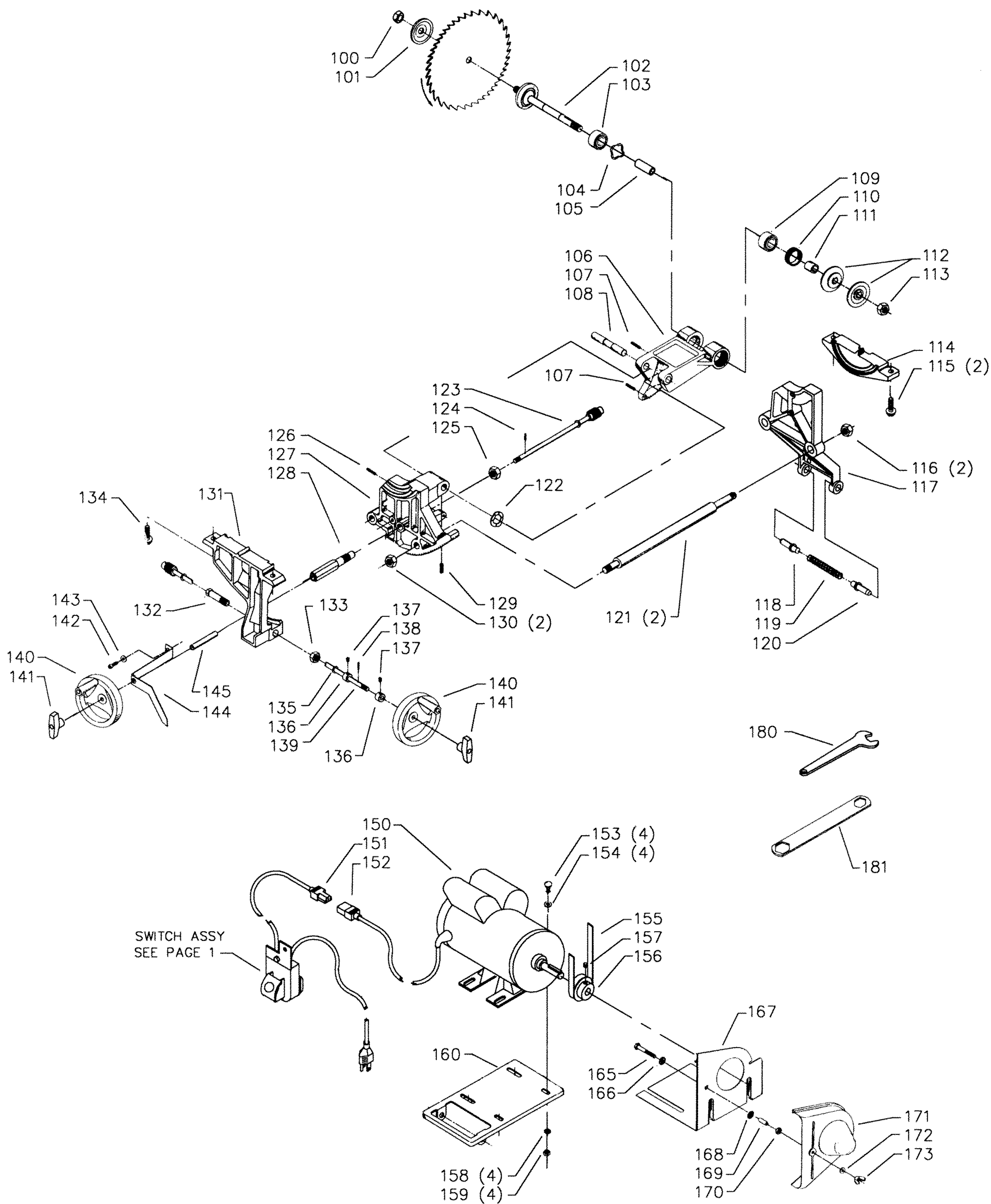
## REPLACEMENT PARTS

REF NO	PART NUMBER	DESCRIPTION	REF NO	PART NUMBER	DESCRIPTION
*	34-412	BLADE GUARD ASSY, CONST OF:	47	901-04-293-1395	5/16-18 X 3/4" HEX SOC SET SCREW
*	1086935	BLADE GUARD, CONST OF:	48	422-35-391-0001	TABLE
1	1086334	"SEE THRU" GUARD	49	422-19-318-0005	CABINET ASSY (WHITE), INCL:
2	1086388	PUSH NUT CAP	50	422-19-754-0001	WARNING LABEL
3	1087811	PIN	51	1087794	RIVET
4	1086388	PUSH NUT CAP	52	422-19-132-0006	NAMEPLATE
5	1086353	SPRING	53	902-01-503-1514	5/16-18 FLANGE NUT
6	422-16-047-0001	KICK BACK FINGER	54	422-19-089-0007	BRACKET
7	422-04-071-0007	PIN	55	901-02-050-0704	5/16-18 X 5/8" FILL HD SCREW
8	1086337	PIVOT BRACKET	60	1231355	5/16-18 X 1/2" HEX WASHER HD SCREW
9	1086387	PUSH NUT	*	422-19-626-0005	STAND ASSY (WHITE), CONST OF:
10	422-04-086-0002	SPLITTER W/BUSHING	61	901-01-060-0606	5/16-18 X 5/8" HEX HD SCREW
11	905-01-010-6729	5/32" X 11/16" SPRING PIN	62	904-01-010-1620	FLAT WASHER
12	901-11-023-1476	5/16-18 X 5/8" CARRIAGE HD SCREW	63	904-02-010-1703	5/16" LOCK WASHER
13	422-19-089-0003	BRACKET	64	902-01-010-1300	5/16-18 HEX NUT
14	904-01-010-1620	FLAT WASHER	65	436-06-123-0002	LEG PANEL (WHITE) - REAR
15	902-01-010-1300	1/4-20 X 3/4" HEX HD SCREW	66	436-06-026-0002	DUST CHUTE (WHITE)
17	904-01-010-1614	FLAT WASHER	67	436-06-423-0002	LEG PANEL (WHITE) - FRONT, INCL:
18	901-01-060-0649	5/16-18 X 1" HEX HD SCREW	68	1087794	RIVET
19	422-03-072-0001	PLATE	69	422-19-132-0005	NAMEPLATE
20	422-04-014-0037	SPLITTER BRACKET	70	438-01-004-0097	BUSHING
21	901-03-010-0230	1/4-20 X 2" HEX SOC HD SCREW	71	901-05-213-1498	#10 X 1/2" HEX WASHER HD SCREW
22	901-03-010-0755	1/4-20 X 3/4" HEX SOC HD SCREW	72	902-01-293-1513	#10-32 KEPS NUT
23	904-01-010-1614	FLAT WASHER	73	901-02-453-1123	#10-32 X 1/2" PAN HD SCREW
25	43-349	EXTENSION WING, INCL:	74	427-99-048-0001	FOOT
26	901-01-060-9964	7/16-20 X 1 1/4" HEX HD SCREW	75	438-01-004-0054	CABLE TIE
27	904-10-031-2097	WASHER	80	34-895	MITER GAGE, CONST OF:
*	438-01-317-0128	SWITCH KIT ASSY, CONST OF:	80	422-02-074-0001	HOLE PLUG
32	422-39-067-0001	SWITCH ACTUATOR	81	422-02-060-0003	HANDLE
33	438-01-317-0127	SWITCH	82	904-07-010-5555	1/4" FIBER WASHER
34	901-03-030-8013	1/4-20 X 3/4" FLAT HD SCREW	83	422-01-355-0004	MITER GAGE BODY, INCL:
35	422-39-014-0022	SWITCH BOX COVER	84	901-04-150-1181	1/4-28 X 3/16" HEX SOC SET SCREW
36	422-19-001-0003	SWITCH PLATE	85	901-04-150-9428	#08-32 X 1/2" HEX SOC SET SCREW
37	902-01-120-1034	1/4-20 HEX NUT	86	422-04-004-0001	BAR, INCL:
38	901-05-163-1229	#10-16 X 1/2" PAN HD SCREW	87	422-01-088-0004	STOP LINK
39	422-39-013-0001	SWITCH BOX	88	901-04-150-1181	1/4-28 X 3/16" HEX SOC SET SCREW
40	901-05-163-1126	#08-32 X 5/16" PAN HD SCREW	89	422-01-075-0001	POINTER
41	438-01-302-0671	CORD W/FEMALE DISCONNECT (See Service Note A)	90	422-01-112-0001	SCREW
42	438-01-302-0672	CORD SET (See Service Note A)	91	422-04-072-0001	PLATE
45	34-154	TABLE INSERT, INCL:	92	901-02-030-5750	1/4-28 X 5/16" FLAT HD SCREW
46	901-04-461-5297	1/4-28 X 3/8" HEX SOC SET SCREW	*	NOT SHOWN ASSEMBLED	

### SERVICE NOTES:

A - When installing power cords, (Ref No 41 & 42), into the switch box, take care to ensure that the cords outer insulating jacket passes through the switch box cord clamp area before tightening the switch box assembly screws.





## REPLACEMENT PARTS

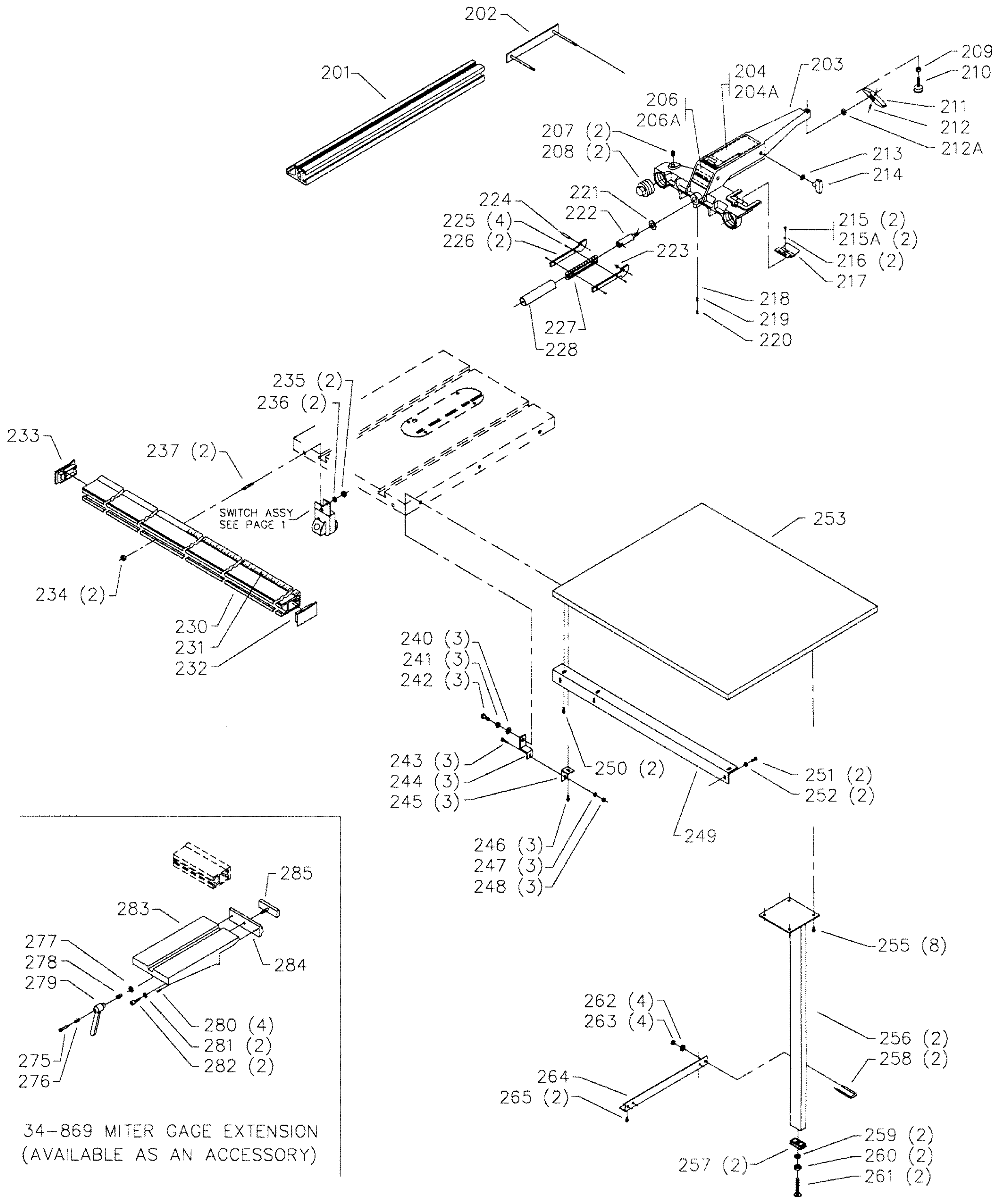
REF NO	PART NUMBER	DESCRIPTION	REF NO	PART NUMBER	DESCRIPTION
100	902-01-200-9848	ARBOR NUT - LH	136	426-03-388-0001	SET COLLAR ASSY, INCL:
101	422-04-103-5001	FLANGE	137	901-04-150-0208	1/4-20 X 1/4" HEX SOC SET SCREW
102	422-19-303-0002	ARBOR ASSY	138	905-01-010-2711	1/8" X 5/8" SPRING PIN
103	1086894	BALL BEARING	139	1087893	TILT SHAFT ASSY, INCL:
104	928-06-020-7382	LOAD SPRING	**	905-01-010-2716	1/8" X 9/16" SPRING PIN
105	1087857	SPACER	140	1086491	HANDWHEEL ASSY
106	422-02-014-0017	ARBOR BRACKET	141	422-19-138-0003	KNOB
107	905-01-010-2710	3/16" X 7/8" SPRING PIN	142	901-03-010-3309	1/4-20 X 5/8" HEX SOC HD SCREW
108	952-01-101-3267	ARBOR BRACKET SHAFT	143	904-01-010-1614	FLAT WASHER
109	1086894	BALL BEARING	144	422-19-075-0001	POINTER
110	902-07-020-7176	BEARING CLOSURE NUT	145	422-19-104-0001	SPACER
111	422-19-104-0005	PULLEY HALF	150	62-044	MOTOR ASSY, INCL:
113	902-01-020-1226	5/8-18 JAM NUT	151	438-01-302-0671	CORD W/FEMALE DISCONNECTOR (See Service Note B)
114	422-02-014-0010	TRUNNION BRACKET - REAR	152	438-01-302-0661	CORD W/MALE CONNECTOR (See Service Note B)
115	901-02-763-1526	5/16-18 X 7/8" HEX WASHER HD SCR	153	901-11-020-0834	5/16-18 X 3/4" CARRIAGE HD SCREW
116	902-01-283-1393	5/8-18 LOCK NUT	154	904-01-010-1620	FLAT WASHER
117	422-19-095-0004	REAR TRUNNION	155	49-034	BELT
118	422-19-071-0002	PIN	156	926-01-041-9366	MOTOR PULLEY (2-1/4"OD), INCL:
119	422-19-122-0001	SPRING	157	901-04-150-0206	5/16-18 X 5/16" HEX SOC SET SCREW
120	422-19-071-0002	PIN	158	904-03-030-1656	5/16" EXT TOOTH WASHER
121	422-19-004-0002	TIE BAR	159	902-01-010-1300	5/16-18 HEX NUT
122	928-06-013-1779	11/16" WAVE WASHER	160	422-02-089-0005	MOTOR PLATE
123	422-35-406-0001	ELEVATING SHAFT ASSY, INCL:	*	34-965	BELT & PULLEY GUARD, CONST OF:
**	905-01-010-2716	1/8" X 9/16" SPRING PIN	165	901-01-060-3124	1/4-20 X 1 1/2" HEX HD SCREW
124	905-01-010-2711	1/8" X 5/8" SPRING PIN	166	904-03-030-1757	1/4" EXT TOOTH WASHER
125	902-01-020-1226	5/8-18 JAM NUT	167	1088314	PLATE
126	905-01-010-2706	3/16" X 1" SPRING PIN	168	904-01-010-1614	FLAT WASHER
127	422-35-095-0001	FRONT TRUNNION	169	424-03-017-0003	SPACER
128	422-35-105-0001	SLEEVE	170	902-01-120-1034	1/4-20 HEX NUT
129	901-04-141-9152	1/4-20 X 5/16" HEX SOC SET SCREW	171	1088315	COVER
130	902-01-283-1393	5/8-18 LOCK NUT	172	904-03-030-1757	1/4" EXT TOOTH WASHER
131	1087233	FRONT TRUNNION, INCL:	173	902-04-010-1402	1/4-20 WING NUT
132	422-35-042-0001	ECCENTRIC	180	955-01-050-1472	WRENCH
133	902-01-020-9145	9/16-18 HEX NUT	181	422-39-101-0001	7/8 X 1/2" WRENCH
134	901-02-763-1526	5/16-18 X 7/8" HEX WASHER HD SCR			
135	904-07-010-5554	3/8" FIBER WASHER			

\* NOT SHOWN ASSEMBLED  
\* NOT SHOWN

### SERVICE NOTES:

*B - When installing power cords, (Ref No 151 & 152), into the switch box, take care to ensure that the cords outer insulating jacket passes through the switch box cord clamp area before tightening the switch box assembly screws.*





34-869 MITER GAGE EXTENSION  
 (AVAILABLE AS AN ACCESSORY)



# REPLACEMENT PARTS

REF NO	PART NUMBER	DESCRIPTION	REF NO	PART NUMBER	DESCRIPTION
*	36-934	30" UNIFENCE (WHITE), CONST OF:	237	422-27-111-0003	STUD
201	34-916	33" FENCE	240	904-01-010-1638	FLAT WASHER
202	400-06-327-0001	CLAMP ASSY	241	904-02-010-1716	1/4" LOCK WASHER
203	400-06-312-0004	FENCE BODY ASSY (WHITE), INCL:	242	901-01-060-0680	7/16-20 X 3/4" HEX HD SCREW
204	422-27-754-0009	LABEL - 7 3/8 x 2 1/2" (Current Models Only)	243	901-11-020-0821	1/4-20 X 3/4" CARRIAGE HD SCREW
204A	422-27-754-0003	LABEL - 6 7/16 X 2 9 1/16" (Early Models Only)	244	422-27-014-0003	ADAPTER
206	422-27-754-0007	LABEL - 2 3/4 X 2 1/2" (Current Models Only)	245	422-27-089-0007	ANGLE BRACKET
206A	422-27-754-0004	LABEL - 1 1/2 X 2 9 1/16" (Early Models Only)	246	901-25-043-1791	#08-8 X 13/16" HEX WASHER HD SCR
207	422-39-112-0005	LEVELING SCREW	247	904-01-010-1614	FLAT WASHER
208	422-39-048-0001	ADJUSTMENT PLUG	248	902-01-120-1034	1/4-20 HEX NUT
209	902-01-010-1300	5/16-18 HEX NUT	249	422-27-089-0012	TABLE SUPPORT (WHITE)
210	422-27-048-0001	REAR SUPPORT FOOT	250	901-25-043-1791	#08-8 X 13/16" HEX WASHER HD SCR
211	422-27-068-0003	LOCKING LUG	251	901-01-060-0612	1/4-20 X 5/8" HEX HD SCREW
212	905-01-010-2702	1/4" X 5/8" SPRING PIN	252	904-01-010-1614	FLAT WASHER
212A	908-25-013-1808	O-RING (Current Models Only)	253	36-935	TABLE BOARD
213	904-01-010-1620	FLAT WASHER	255	901-25-043-1791	#08-8 X 13/16" HEX WASHER HD SCR
214	424-12-060-0005	KNOB	256	422-39-366-0002	LEG ASSY (WHITE)
215	901-02-443-1812	#08-32 X 1/2" PAN HD SCREW (Current Models Only)	257	422-39-001-0008	LEG ADAPTER
215A	901-03-043-1713	#08-32 X 3/8" BUTTON HD SCREW (Early Models Only)	258	422-39-112-0006	U-BOLT
216	904-01-013-1738	3/16" FLAT WASHER	259	904-01-010-1615	FLAT WASHER
217	400-06-375-0002	CURSOR	260	902-01-010-5900	3/8-16 JAM NUT
218	921-01-110-0001	BALL	261	901-09-131-5295	LEVELING SCREW
219	928-01-250-0001	SPRING	262	904-01-010-1614	FLAT WASHER
220	901-04-150-9440	1/4-20 X 1/2" HEX SOC SET SCREW	263	902-01-120-1034	1/4-20 HEX NUT
221	422-27-104-0002	THRUST WASHER	264	422-39-089-0039	SHELF SUPPORT (WHITE)
222	422-39-106-0002	SHAFT	265	901-25-043-1791	#08-8 X 13/16" HEX WASHER HD SCR
223	908-25-013-1756	O-RING	<b>AVAILABLE AS AN ACCESSORY</b>		
224	905-01-103-1370	5/16" X 1 1/4" SPRING PIN	*	34-869	MITER GAGE., CONST OF:
225	901-05-163-1229	#10-16 X 1/2" PAN HD SCREW	275	1340935	SPECIAL SCREW
226	422-39-019-0001	CAM HANDLE	276	1340934	SPRING
227	422-39-138-0002	HANDLE	277	1340931	WASHER
228	422-39-105-0001	GRIP	278	1340932	SPECIAL SCREW
230	422-27-055-0005	FRONT GUIDE RAIL, INCL:	279	1340933	HANDLE
231	400-06-432-0001	SCALE KIT (See Service Note C)	280	1246010	(DIN 913) M6 X 16MM HEX SOC SET SCR
232	422-27-020-0002	END CAP - RH	281	904-01-010-1605	3/8" FLAT WASHER
233	422-27-020-0001	END CAP - LH	282	1246074	(DIN 912) M10 X 30MM HEX SOC HD SCR
234	902-01-010-1207	3/8-24 HEX NUT	283	1340926	TABLE
235	902-01-010-5900	3/8-16 JAM NUT	284	1340927	ADJUSTING BLOCK
236	904-01-010-1615	FLAT WASHER	285	1340928	ANCHOR BLOCK
			*	NOT SHOWN	

**SERVICE NOTES:**

*C - Scale is provided oversized and must be cut to proper length.*

**STANDARD SAFETY EQUIPMENT**

In order to promote tool safety, Delta International Machinery Corp. strictly enforces the policy of repairing or replacing any damaged or missing standard safety equipment on machines presented to Delta Authorized Service Center for service/repairs. Any product which is presented to a Delta Authorized Service Center for repairs which contains missing or damaged standard safety equipment will have that equipment repaired or replaced and the customer will be charged for any such service/repairs. Customers can avoid such charges only if the missing safety component is supplied to the service center at the time of repair.

*This parts list is provided to aid in obtaining service parts. Copies of the instruction and maintenance literature can be obtained through the Delta Technical Publications Department or through your local service outlet.*