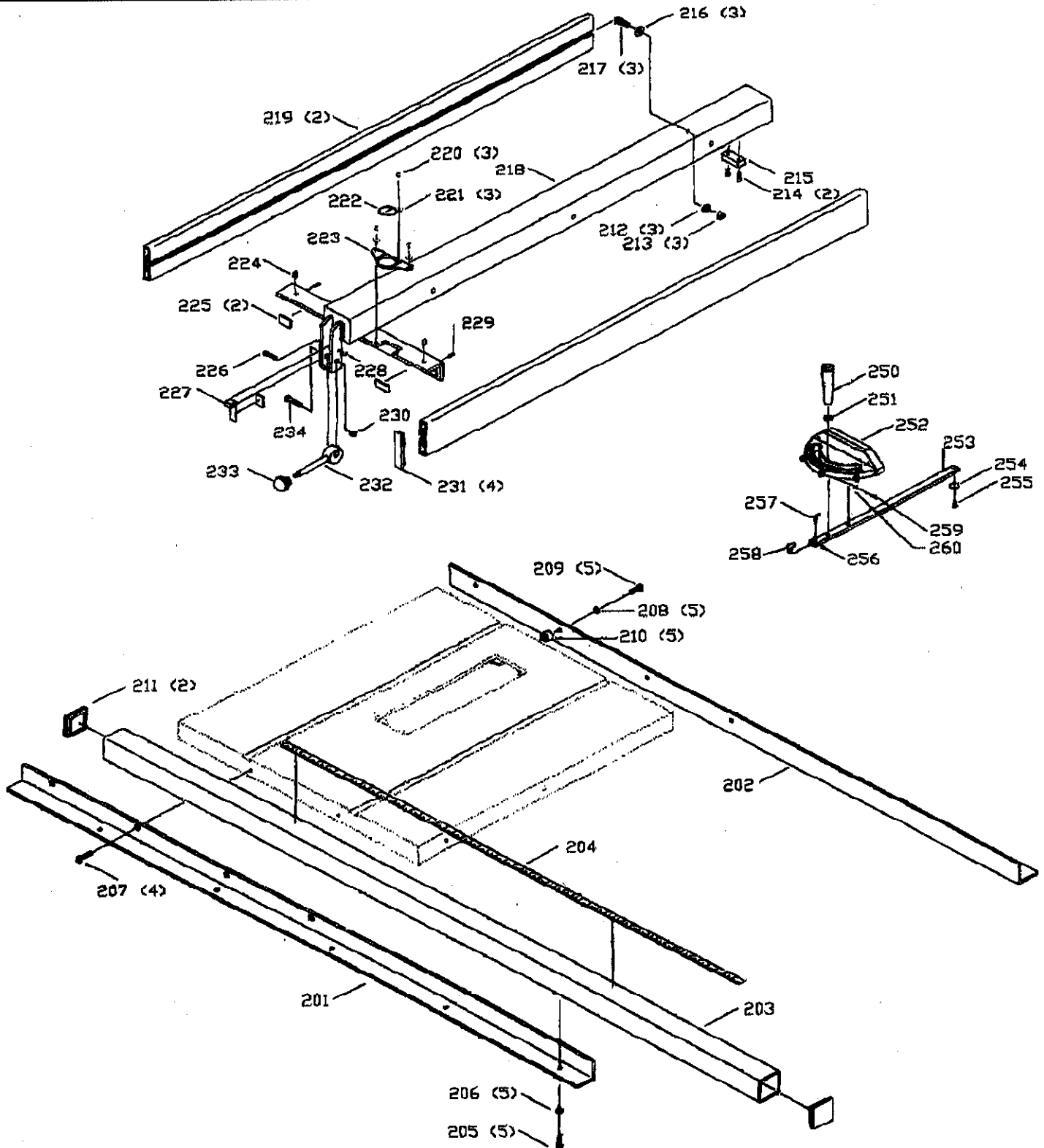


## REPLACEMENT PARTS

REF NO.	PART NO.	DESCRIPTION	REF NO.	PART NO.	DESCRIPTION
3	1237213	BLADE INSERT	28	1237274	LATCH ASSY
4	1237085	SET SCREW M6-1.0*8	29	1237227	WIRING BOX
*	1237254	BLADE GUARD ASSY, CONST OF.	30	1237229	GUARD SUPPORT ROD
5	1237263	RETAINER	31	1237228	STRAIN RELIEF
6	1237264	GUARD	32	1237209	V-BELT A-27
7	1237263	RETAINER	33	1237207	MOTOR PULLEY
8	1237265	SUPPORT ARM	34	1237007	SET SCREW M6-1*6
9	1237272	PIN	35	1237208	KEY 3/16**3/16**1 1/2"
10	1237266	PIN	36	1237234	MOTOR, 230V, 1PH
11	1237267	SPRING	37	1237222	STRAIN RELIEF
11A	1237273	SPACER	38	1237219	MAGNETIC SWITCH, 230V, 1PH
12	1237271	RETAINER	39	1237218	HEX BOLT M10-1.5*80
13	1237270	ANTI KICKBACK LEAF	40	1237103	LOCK WASHER 10MM
14	1237139	ROLL PIN 3 * 20	41	1237226	SHIELD PLATE
15	1237268	BLADE SPLITTER	42	1237002	CAP SCREW M6-1.25*25
16	1237269	PIN	43	1237007	SET SCREW M6-1*6
17	1237085	HEX BOLT M6-1.25*25	44	1237224	CRANK HANDLE
18	1235817	FLAT WASHER 6MM	45	1237223	LOCKING KNOB
19	1237004	HEX BOLT M6-1.25*12	46	1237225	HANDWHEEL
20	1235817	FLAT WASHER 6MM	47	1237224	CRANK HANDLE
21	1237231	GUARD SUPPORT (UPPER)	48	1237215	BASE
22	1237232	GUARD SUPPORT (LOWER)	48A	1235089	NAMEPLATE
23	1235825	LOCK WASHER 6MM	49	1237216	INDICATOR PLATE
25	1237085	HEX BOLT M6-1.25*25	50	1237214	TABLE
26A	1237217	MOTOR CORD	51	1237103	LOCK WASHER 10MM
26B	1237220	POWER CORD	52	1237063	HEX BOLT M10-1.5*35
27	1237221	DOOR ASSY, INCL:	53	1237212	EXTENSION TABLE (LEFT SIDE)
			54	1234720	WARNING LABEL
			55	1237275	EXTENSION TABLE (RIGHT SIDE)

\* NOT SHOWN ASSEMBLED

\*\* NOT SHOWN



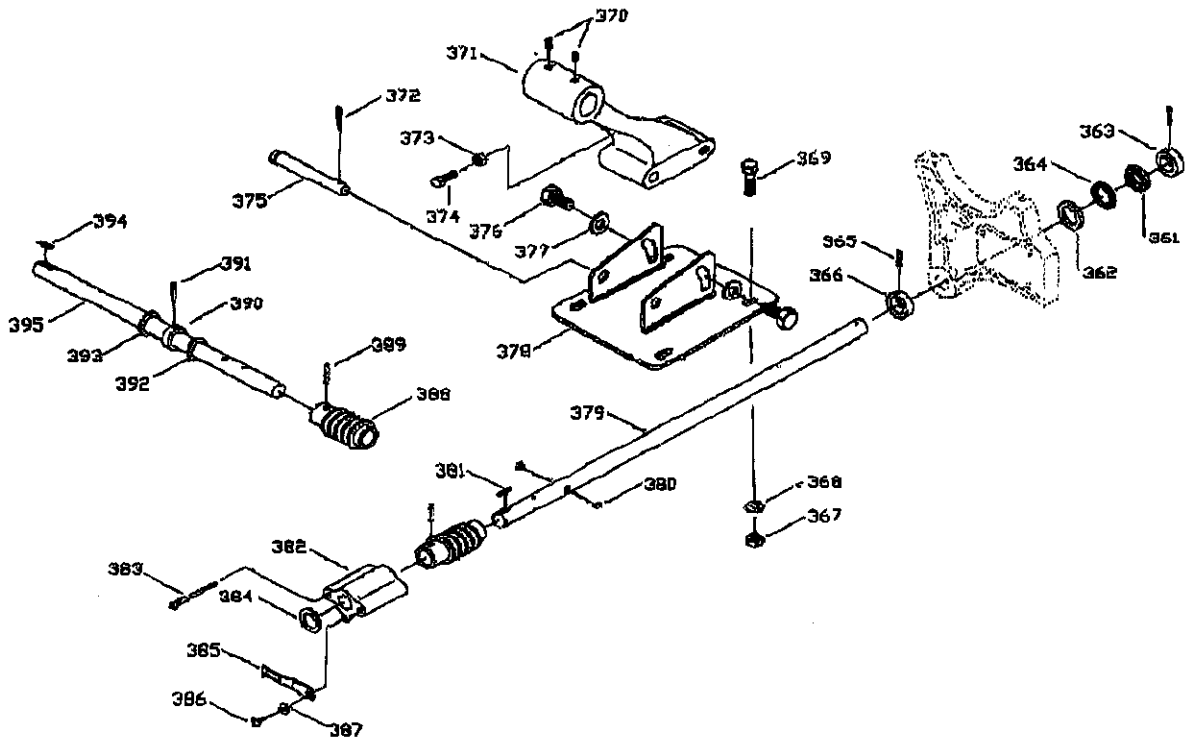
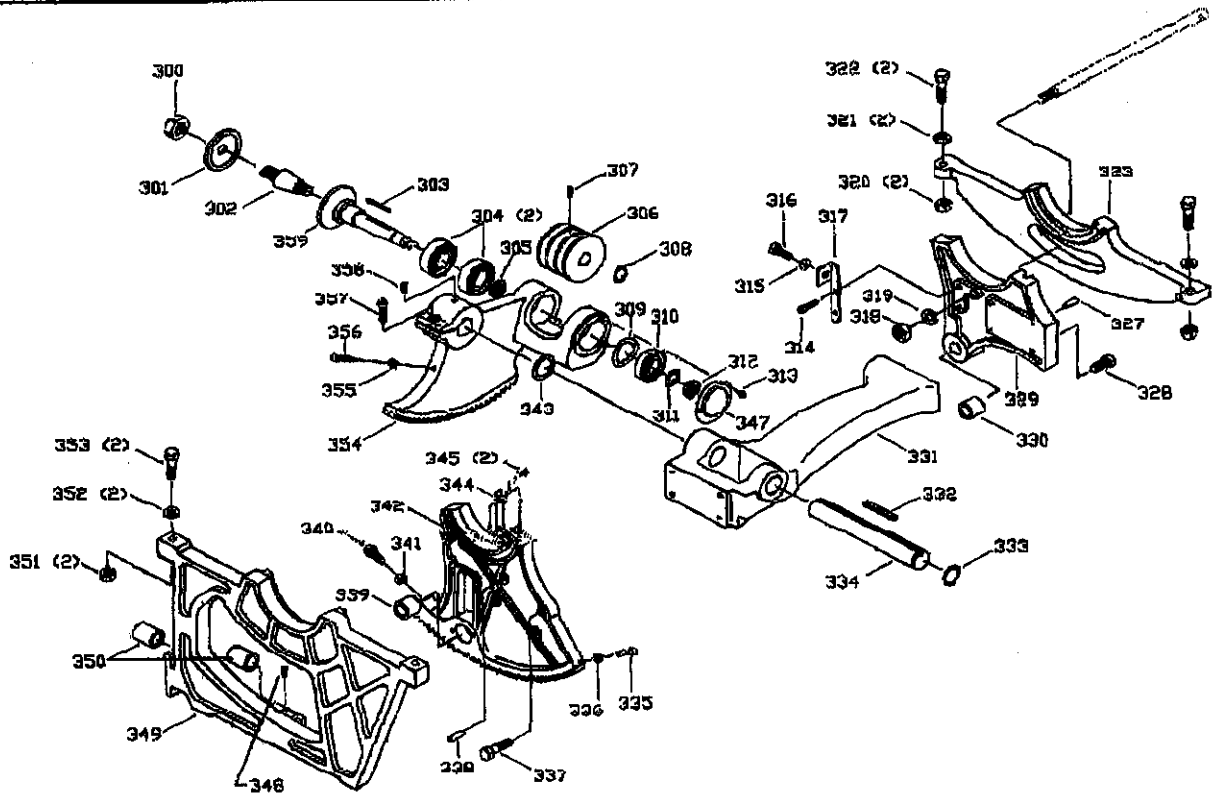
# REPLACEMENT PARTS

REF. NO.	PART NO.	DESCRIPTION
201	1237236	FRONT RAIL
202	1237237	BACK RAIL
203	1237238	SQUARE TUBE
204	1237240	TAPE SCALE
205	1237097	HEX BOLT M8-1.25*16
206	1235625	LOCK WASHER 8MM
207	1237098	FLAT HD SCR M8-1.25*12
208	1235625	LOCK WASHER 6MM
209	1237105	HEX BOLT M8-1.25*30
210	1237244	RAIL SPACER
211	1237239	TUBE END CAP
*	1237235	COMPLETE FENCE ASSY, CONST OF:
212	1237109	LOCK WASHER 10MM
213	1237104	HEX NUT M10-1.5
214	1237108	PHLP HD SCR M5-.8*15
215	1237107	NYLON BLOCK
216	1285660	FLAT WASHER 10MM
217	1237102	HEX BOLT M10-1.5*20
218	1237243	MAIN FENCE BODY
219	1237242	FENCE SIDE
220	1237021	ROUND HD SCR M5-.8*20
221	1237009	FLAT WASHER 5MM
222	1237117	CURSOR
223	1237118	INDICATOR BRACKET
224	1237120	NYLON ADJUSTING SCREW
225	1237111	TEFLON PAD
226	1237116	CAP SCREW M6-1.0*40

REF. NO.	PART NO.	DESCRIPTION
227	1237112	FENCE LOCK (CLAMP SHOE)
228	1237115	LOCK NUT M6-1.0
229	1285655	SET SCREW M6-1.25*10
230	1237113	LOCK NUT 3/8"-16
231	1237100	FENCE END CAP
232	1237110	LOCK HANDLE
233	1237109	LOCK KNOB
234	1237114	HEX BOLT 3/8"-16*1 3/4
*	1237211	MITER GAGE ASSY, CONST OF:
250	1237235	HANDLE
251	1235650	FLAT WASHER 10MM
252	1237257	MITER BODY
253	1237256	MITER BAR
254	1237261	SPECIAL WASHER
255	1237128	FLAT HD SCR M6-1*8
256	1237259	NYLON ADJUSTING BOREW
257	1237259	INDICATOR
258	1237260	STOP
259	1237256	PHLP HD SCR M5-.8*20
260	1237262	LOCK NUT M5-0.8
**	1235909	ALLEN WRENCH 8MM
**	1237058	SPANNER WRENCH
**	1237059	ALLEN WRENCH 5MM
**	1235153	ALLEN WRENCH 3MM
**	1237060	12 X14 WRENCH
**	1237061	17 X 19 WRENCH
**	1235533	ALLEN WRENCH 4MM

\* NOT SHOWN ASSEMBLED

\*\* NOT SHOWN



# REPLACEMENT PARTS

REF. NO.	PART NO.	DESCRIPTION
300	1237165	ARBOR NUT 5/8"
301	1237166	BLADE FLANGE 5/8"
302	1237167	ARBOR ADAPTOR 5/8"
303	1237033	KEY 5*5*45
304	1235115	BALL BEARING 6005
305	1237038	LOCKING NUT 20MM
306	1237186	DRIVE PULLEY
307	1237007	SET SCREW M6-1*6
308	1237187	SNAP RING, R22
309	1237188	BEARING WASHER
310	1237036	BALL BEARING 6204
311	1237189	WASHER
312	1237098	LOCKING NUT 20MM
313	1237021	ROUND HD SCR M5-.8*8
314	1235894	CAP SCREW M6-1*12
315	1235817	FLAT WASHER 8MM
316	1237004	HEX BOLT M6-1.25*12
317	1237192	FRONT SUPPORT BRACKET
318	1235841	HEX NUT M12-1.75
319	1237006	LOCK WASHER 12MM
320	1237104	HEX NUT M10-1.5
321	1237103	LOCK WASHER 10MM
322	1237063	HEX BOLT M10-1.5*35
323	1237206	REAR TRUNNION BRACKET
327	1237193	BALL PIN 6*20
328	1237042	CAP SCREW M10-1.5*25
329	1237194	REAR TRUNNION BRACKET
330	1237164	BUSHING
331	1237195	ARM
332	1237197	KEY 5*5*75
333	1237205	SNAP RING R28
334	1237198	SHAFT
335	1237184	HEX BOLT M12-1.75*15
336	1236037	HEX NUT M8-1.25
337	1237043	CAP SCREW M10-1.5*25
338	1237193	BALL PIN 6*20
339	1237164	BUSHING
340	1237005	HEX BOLT M8-1.25*35
341	1236037	HEX NUT M8-1.25
342	1237182	FRONT TRUNNION
343	1237181	WASHER
344	1237191	DUST DEFLECTOR
345	1235894	CAP SCREW M6-1*12
347	1237190	COVER
348	1237007	SET SCREW M6-1*6
349	1237180	FRONT TRUNNION BRACKET

REF. NO.	PART NO.	DESCRIPTION
350	1237163	BUSHING
351	1237104	HEX NUT M10-1.5
352	1237108	LOCK WASHER 10MM
353	1237063	HEX BOLT M10-1.5*35
354	1237169	ARBOR BRACKET
355	1235820	HEX NUT M8-1.0
356	1237170	HEX BOLT M6-1*12
357	1237002	CAP SCREW M8-1.25*25
358	1237032	SET SCREW M8-1.25*8
359	1237168	ARBOR
361	1237202	BEARING DUST DEFLECTOR
362	1237199	WASHER
363	1237176	COLLAR
364	1237203	THRUST BEARING 51104
365	1237177	ROLL PIN
366	1237176	COLLAR
367	1237104	HEX NUT M10-1.5
368	1237103	LOCK WASHER 10MM
369	1237218	HEX BOLT M10-1.5*30
370	1237007	SET SCREW M6-1*6
371	1237186	MOTOR MOUNT SUPPORT
372	1237185	COTTER PIN
373	1236037	HEX NUT M8-1.25
374	1237005	HEX BOLT M8-1.25*35
375	1237193	PIVOT SHAFT
376	1237184	HEX BOLT M12-1.75*15
377	1235840	FLAT WASHER 12MM
378	1237201	MOTOR MOUNT PLATE
379	1237204	HEIGHT ADJUSTMENT SHAFT
380	1237178	LIMIT STUD
381	1237340	KEY 5*5*25
382	1237171	INDICATOR BRACKET
383	1237172	SOCKET HD BOLT M5-.80*75
384	1237182	WASHER
385	1237173	INDICATOR
386	1237174	ROUND HD SCREW M5-.80*75
387	1237003	FLAT WASHER 5MM
388	1237200	WORM GEAR
389	1237177	ROLL PIN
390	1237175	COLLAR
391	1237177	ROLL PIN
392	1237199	WASHER
393	1237182	WASHER
394	1237340	KEY 5*5*25
395	1237179	TILT ADJUSTMENT SHAFT

\* NOT SHOWN ASSEMBLED

\*\* NOT SHOWN

## STANDARD SAFETY EQUIPMENT

In order to promote tool safety, Delta International Machinery Corp. strictly enforces the policy of repairing or replacing any damaged or missing standard safety equipment on machines presented to Delta Authorized Service Centers for service/repair. Any product which is presented to a Delta Authorized Service Center for repairs which contains missing or damaged standard safety equipment will have that equipment repaired or replaced and the customer will be charged for any such service/repairs. Customers can avoid such charges only if the missing safety component is supplied to the service center at the time of repair.

This parts list is provided to aid in obtaining service parts. Copies of the instruction and maintenance literature can be obtained through the Delta Technical Publications Department or through your local service outlet.