

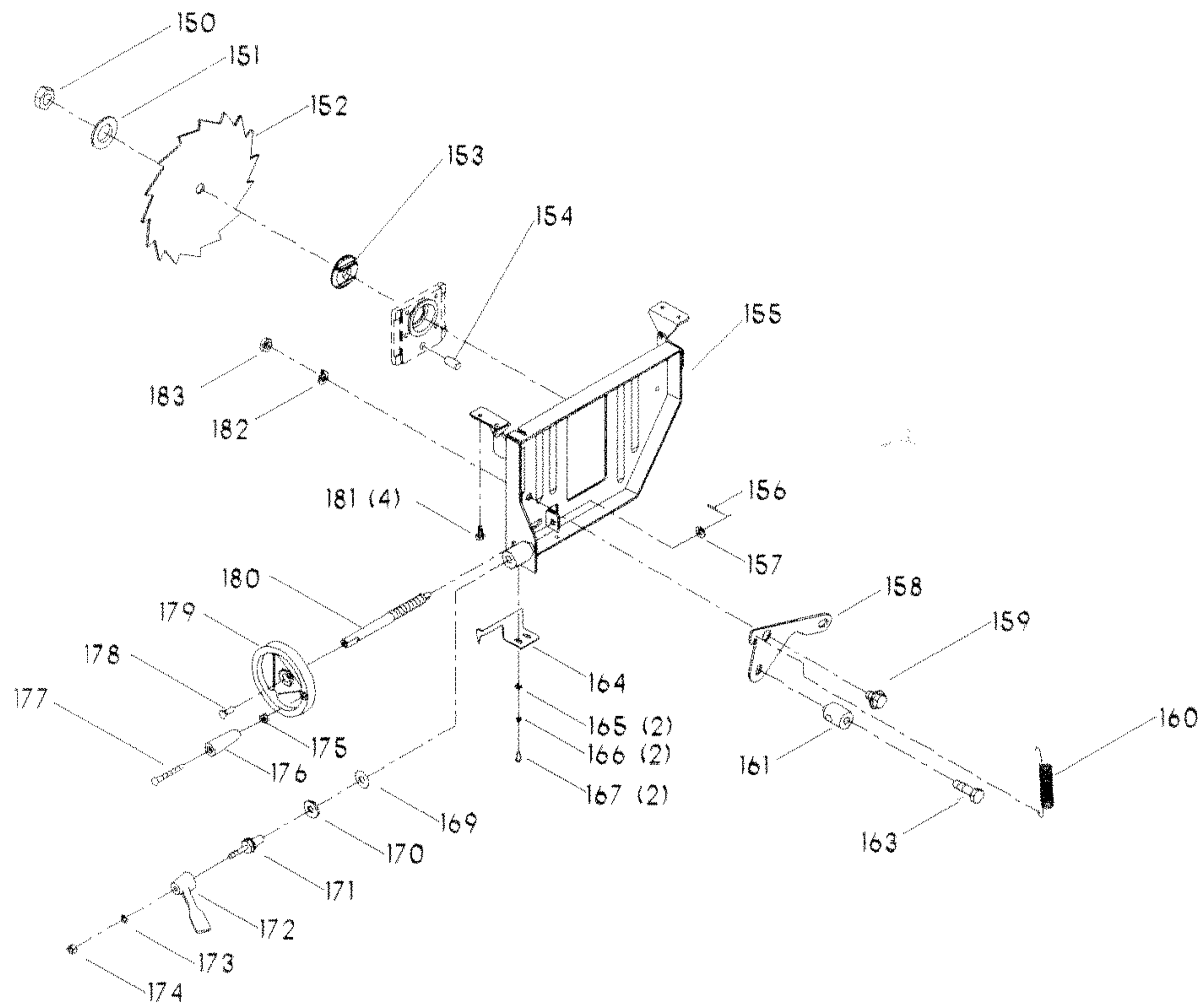
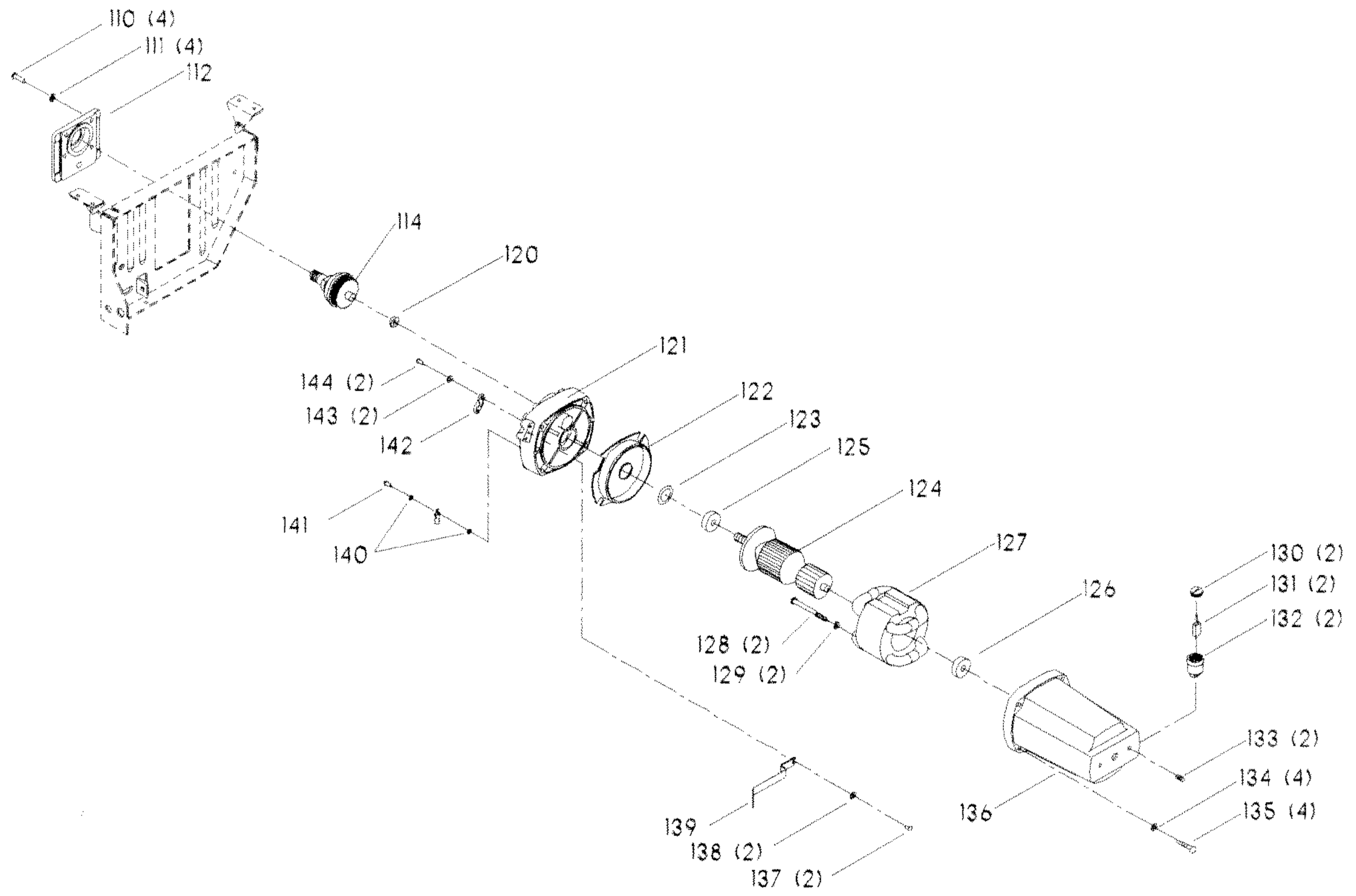
REPLACEMENT PARTS

<u>REF. NO.</u>	<u>PART NUMBER</u>	<u>DESCRIPTION</u>	<u>REF. NO.</u>	<u>PART NUMBER</u>	<u>DESCRIPTION</u>
1	36-278	STANDARD TABLE INSERT, <i>INCL:</i>	49	1243520	(DIN 7980) M6.1 LOCK WASHER
2	1347527	(DIN 7985) M4 X 10MM PAN HD SCR	50	1246014	(DIN 933) M6 X 15MM HEX HD SCR
3	1347528	RUBBER WASHER	51	1347546	<i>RIGHT HAND</i> SUPPORT
*	1347549	GUARD ASSY, <i>CONST OF:</i>	52	1347547	WRENCH
4	1347550	GUARD	53	1340406	(DIN 7981B) M4.2 X 10MM PAN HD SCR
5	1347551	PIN	54	1347545	CLIP
6	1345653	BUMPER	55	1243525	(DIN 7980) M4.1 LOCK WASHER
7	1347552	BRACKET	56	1340406	(DIN 7981B) M4.2 X 10MM PAN HD SCR
8	1347553	SPRING	57	1340406	(DIN 7981B) M4.2 X 10MM PAN HD SCR
9	1347554	SPLITTER	58	1347542	SWITCH PADDLE
10	1347555	SPACER	59	1347538	RUBBER FOOT (<i>EMO</i>)
11	1310311	(DIN 1481) M4 X 22MM SPRING PIN	59A	1347539	(DIN 7981B) M6.3 X 16MM PAN HD SCR
12	1347556	FINGER			(<i>EMO</i>)
13	1347557	BLOCK	60	1349904	(DIN 85) M5 X 40MM PAN HD SCR (<i>CMO</i>)
14	1347558	CLIP	60A	1246102	(DIN 125) M5.3 FLAT WASHER (<i>CMO</i>)
15	1243525	(DIN 7980) M4.1 LOCK WASHER	61	1345038	M5 FENDER WASHER (<i>CMO</i>)
16	1347527	(DIN 7985) M4 X 10MM PAN HD SCR	61A	1349893	RISER BLOCK (<i>CMO</i>)
17	1347559	SHIM (<i>SEE NOTE A</i>)	61B	1347538	RUBBER FOOT (<i>CMO</i>)
18	1243520	(DIN 7980) M6.1 LOCK WASHER	61C	1349903	(DIN 6920) M5 FLNG NUT (<i>CMO</i>)
19	1246004	(DIN 912) M6 X 16MM HEX SOC HD SCR	62	1347540	FRONT SUPPORT ASSY, <i>INCL:</i>
20	1347529	TABLE ASSY, <i>INCL:</i>	63	1344390	FRONT LABEL
21	1347530	SCALE	64	1087794	RIVIT
22	1344392	WARNING LABEL	65	1087794	RIVIT
23	36-279	EXT WING, <i>INCL:</i>	66	1344391	NAMEPLATE
23A	1343101	(DIN 933) M6 X 25MM HEX HD SCR	67	1347624	DEPTH SCALE
23B	1243520	(DIN 7980) M6.1 LOCK WASHER	68	1246140	(DIN 125) M6.4 FLAT WASHER
23C	1310062	(DIN 9021) M6.4 FLAT WASHER	69	1345859	(DIN 7380) M6 X 12MM BUTTON HD SCR
23D	1349509	SCALE	70	1347543	SWITCH, <i>INCL:</i>
*	1347560	MITER GAGE ASSY, <i>CONST OF:</i>	70A	1313228	NUT
24	1342685	HANDLE	71	1347544	SWITCH BOX
24A	1313241	WASHER	72	1347608	SPACER (<i>SEE NOTE B</i>)
25	1313242	MITER GAGE BODY	*	1347562	FENCE ASSY, <i>CONST OF:</i>
26	1310161	(DIN 85) M4 X 18MM PAN HD SCR	73	1347564	FENCE
27	1243569	(DIN 934) M4 HEX NUT	74	1347563	GLIDE
28	1313247	1/4" X .890 DOWEL PIN	75	1246013	(DIN 933) M6 X 12MM HEX HD SCR
29	1313243	POINTER	76	1313361	(DIN 6797A) M6.4 EXT TOOTH WASHER
30	1313245	STOP LINK	77	1343642	(DIN 985) M6 LOCK NUT
31	1347561	GUIDE BAR	78	1246140	(DIN 125) M6.4 FLAT WASHER
32	1310055	(DIN 913) M6 X 6MM HEX SOC SET SCR	79	1347572	REAR CLAMP
33	422-04-072-0001	PLATE	80	1347571	SPRING
33A	901-02-030-5750	1/4-28 X 5/16" FLAT HD SCR	81	1310159	(DIN 85) M4 X 6MM PAN HD SCR
34	1347531	HAND TUBE	82	1345678	POINTER
35	1347532	WORK SUPPORT (<i>EMO</i>)	83	1347569	FENCE BODY
36	1349510	SUPPORT	84	1347568	WASHER
36A	1246004	(DIN 912) M6 X 16MM HEX SOC HD SCR	85	1347570	ROD
36B	1243520	(DIN 7980) M6.1 LOCK WASHER	86	1347567	(DIN 1481) M4 X 18MM SPRING PIN
36C	1246140	(DIN 125) M6.4 FLAT WASHER	87	1347565	HANDLE
36D	1243502	(DIN 125) M10 FLAT WASHER	88	1347566	COVER
36E	1349508	ROD	89	438-01-004-0062	HEYCO BUSHING 5/8"
37	1347535	BRACKET	90	1320175	CONNECTOR
38	1349940	EXT RET RING	91	1347573	POWER CORD
39	1347536	<i>LEFT HAND</i> SUPPORT	92	1341235	(DIN 84) M4 X 12MM CHEESE HD SCR
40	1346723	(DIN 90HFB) M6 X 16MM HEX FLNG SCR	93	1310210	(DIN 6797A) M4.3 EXT TOOTH WASHER
41	1347527	(DIN 7985) M4 X 10MM PAN HD SCR	94	1243569	(DIN 934) M4 HEX NUT
42	1243525	(DIN 7980) M4.1 LOCK WASHER	95	1347574	MOTOR CORD
43	1347537	CLIP	96	432-07-101-0004	5MM HEX WRENCH
44	1347534	STOP NUT	97	422-29-101-0002	4MM HEX WRENCH
45	1347533	REAR SUPPORT	98	1347621	FENCE GUIDE
46	1340406	(DIN 7981B) M4.2 X 10MM PAN HD SCR	98A	1310210	(DIN 6797A) M4.3 EXT TOOTH WASHER
47	1243525	(DIN 7980) M4.1 LOCK WASHER	98B	1340490	(DIN 84) M4 X 8MM CHEESE HD SCR
48	1347548	CLIP			

* NOT SHOWN ASSEMBLED
 EMO = EARLY MODELS ONLY
 CMO = CURRENT MODELS ONLY

NOTE A: EXTRA SHIMS ARE FOR USE WITH THICKER SAW BLADES

NOTE B: USE SPACER WHEN MOUNTING TO STAND ONLY



REPLACEMENT PARTS

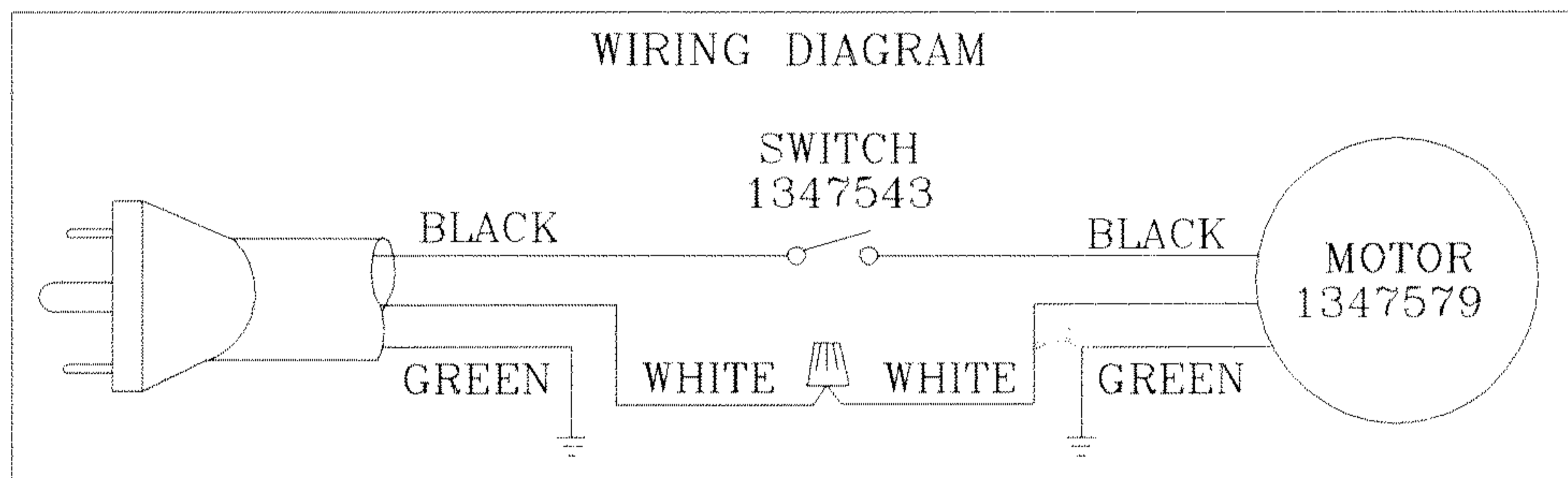
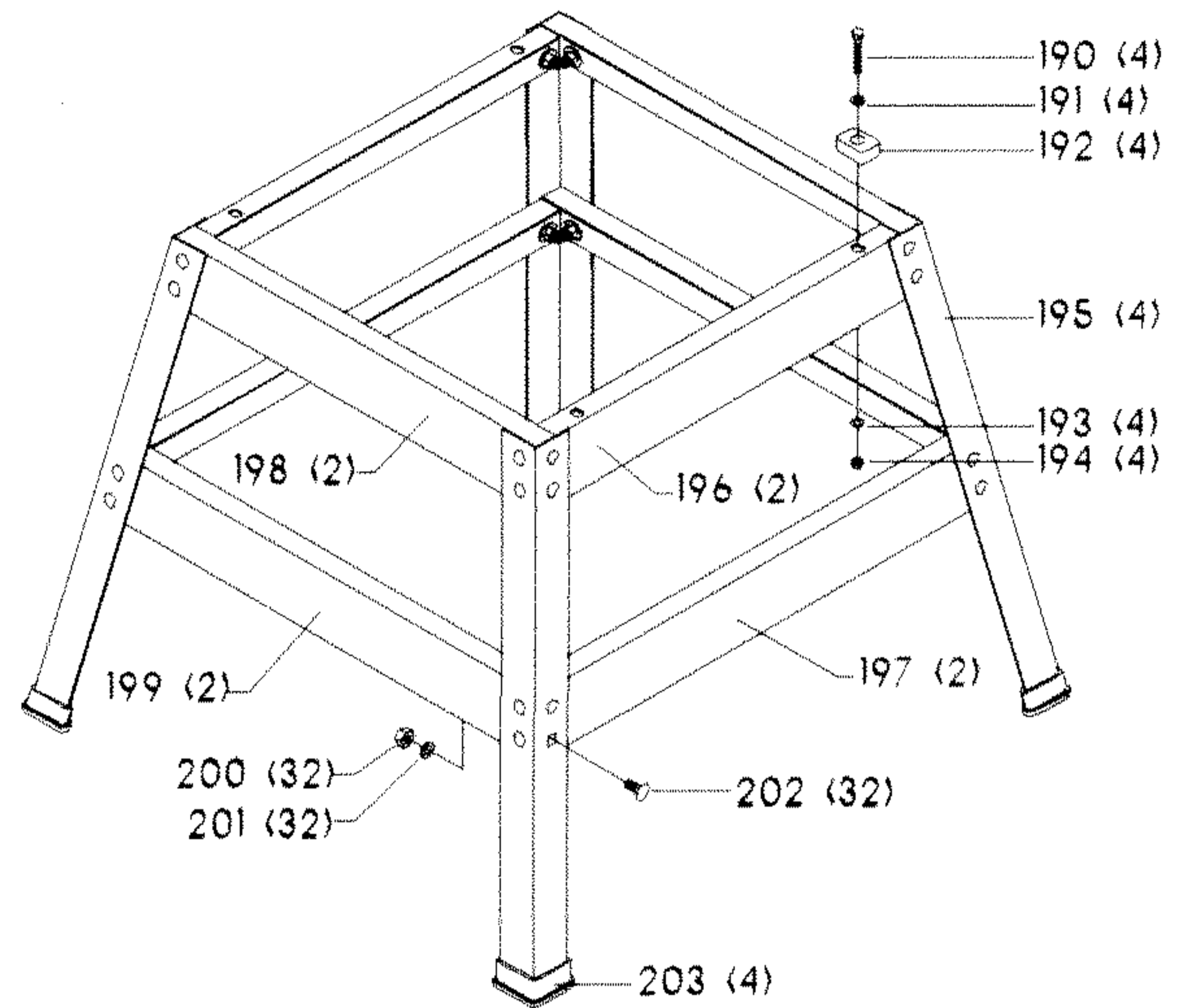
<u>REF. NO.</u>	<u>PART NUMBER</u>	<u>DESCRIPTION</u>	<u>REF. NO.</u>	<u>PART NUMBER</u>	<u>DESCRIPTION</u>
*	1347579	MOTOR ASSY, CONST OF:	151	422-04-103-5009	FLANGE
110	1310157	(DIN 85) M6 X 20MM PAN HD SCR	152	OPTIONAL	BLADE (SEE NOTE A)
111	1243520	(DIN 7980) M6.1 LOCK WASHER	153	1347576	INNER FLANGE
112	1347580	PLATE	154	1347577	(DIN 7) M10 X 20MM DOWEL PIN
114	1347581	JACKSHAFT ASSY	155	1347578	FRAME
120	1344003	NEEDLE BEARING	156	1246119	(DIN 1481) M3 X 16MM SPRING PIN
121	1347586	HOUSING	157	1313194	(DIN 137B) M8.4 WAVE WASHER
122	1347587	RING	158	1347597	PIVOT ARM
123	1313124	WAVE WASHER	159	1347596	SCR
124	1347588	ARMATURE ASSY, CONST OF:	160	1347595	SPRING
125	400-08-139-0008	BALL BEARING	161	1347599	BUSHING
126	920-08-020-5352	BALL BEARING	163	1347598	SCR
127	1347589	FIELD	164	1347600	POINTER
128	1347613	(DIN 7981B) M5.5 X 55MM PAN HD SCR	165	1343545	(DIN 125) M4.1 FLAT WASHER
129	1343538	(DIN 7980) M5.1 LOCK WASHER	166	1243525	(DIN 7980) M4.1 LOCK WASHER
130	1347590	BRUSH CAP	167	1310159	(DIN 85) M4 X 6MM PAN HD SCR
131	1347591	BRUSH	169	1347602	WASHER
132	1347592	BRUSH HOLDER	170	1246116	(DIN 9021) M10.5 FLAT WASHER
133	1246008	(DIN 916) M5 X 12MM HEX SOC SET SCR	171	1347603	STUD
134	1246140	(DIN 125) M6.4 FLAT WASHER	172	1346281	HANDLE
135	1344331	(DIN 85) M8 X 30MM PAN HD SCR	173	1343642	(DIN 985) M6 LOCK NUT
136	1347593	MOTOR HOUSING	174	1246140	(DIN 125) M6.4 FLAT WASHER
137	1340490	(DIN 84) M4 X 8MM CHEESE HD SCR	175	1243456	(DIN 934) M6 HEX NUT
138	1343545	(DIN 125) M4.1 FLAT WASHER	176	1347606	HANDLE
139	1347594	POINTER	177	1347604	(DIN 85) M6 X 70MM PAN HD SCR
140	1310210	(DIN 6797A) M4.3 EXT TOOTH WASHER	178	1246155	(DIN 963) M6 X 12MM FLAT HD SCR
141	1246177	(DIN 84) M4 X 6MM CHEESE HD SCR	179	1347605	HANDWHEEL
142	1345695	CORD CLAMP	180	1347607	SHAFT
143	1343545	(DIN 125) M4.1 FLAT WASHER	181	1346723	(DIN 90HFB) M6 X 16MM HEX FLNG SCR
144	1246154	(DIN 84) M4 X 16MM CHEESE HD SCR	182	1243360	(DIN 7980) M10.2 LOCK WASHER
150	1347575	ARBOR NUT	183	1243496	(DIN 934) M10 HEX NUT

* NOT SHOWN ASSEMBLED

REPLACEMENT PARTS

REF. NO.	PART NUMBER	DESCRIPTION
*	36-277	STAND ASSY, CONST OF:
190	1246192	(DIN 933) M8 X 45MM HEX HD SCR
191	1243526	(DIN 125) M8.4 FLAT WASHER
192	1347608	SPACER
193	1243526	(DIN 125) M8.4 FLAT WASHER
194	1243398	(DIN 934) M8 HEX NUT
195	1342702	LEG
196	1347611	BRACE
197	1347609	BRACE
198	1347612	BRACE
199	1347610	BRACE
200	1243398	(DIN 934) M8 HEX NUT
201	904-01-010-1605	3/8" FLAT WASHER
202	1313325	(DIN 603) M8 X 20MM CARRIAGE HD SCR
203	1342381	PLASTIC FOOT

* NOT SHOWN ASSEMBLED



STANDARD SAFETY EQUIPMENT

In order to promote tool safety, Delta International Machinery Corp. strictly enforces the policy of repairing or replacing any damaged or missing standard safety equipment on machines presented to Delta Authorized Service Centers for service/repair. Any product which is presented to a Delta Authorized Service Center for repairs which contains missing or damaged standard safety equipment will have that equipment repaired or replaced and the customer will be charged for any such service/repairs. Customers can avoid such charges only if the missing safety component is supplied to the service center at the time of repair.

This parts list is provided to aid in obtaining service parts. Copies of the instruction and maintenance literature can be obtained through the Delta Technical Publications Department or through your local service outlet.