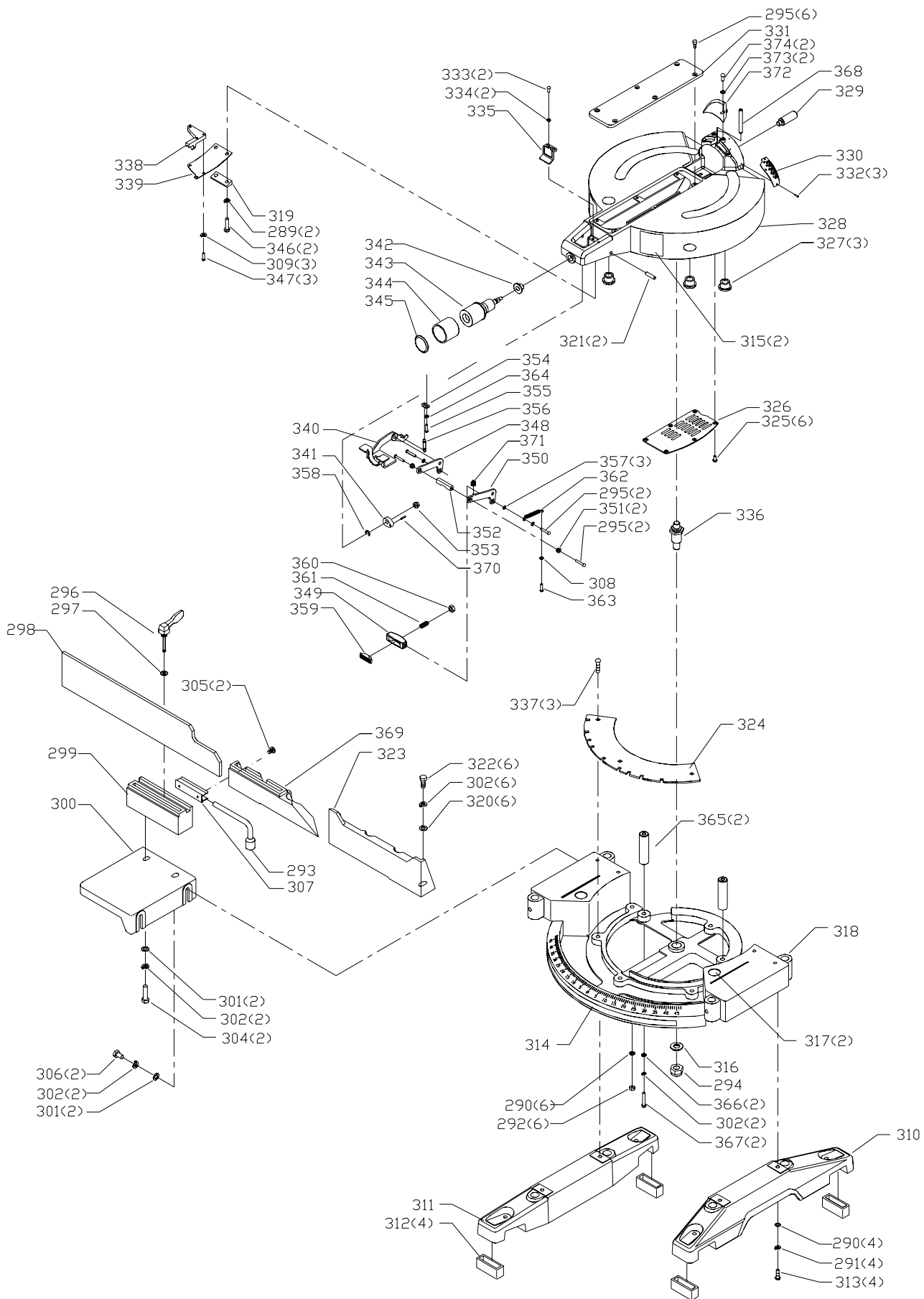


# REPLACEMENT PARTS

Ref.			Ref.		
<u>No.</u>	<u>Part No.</u>	<u>Description</u>	<u>No.</u>	<u>Part No.</u>	<u>Description</u>
1	901-02-120-1711	10-32 X 3/8" TRUSS HD SCREW	72	1344026	M5 X 65MM PAN HD SCREW
2	1347287	PUSH NUT	73	1343538	M5.1 LOCK WASHER
3	1347286	WHEEL	74	n 894539	FIELD
4	1347285	BUSHING	75	n 894450	BEARING
5	1343504	LOCKNUT	76	1343267	WAVE WASHER
6	1347280	PLATE	77	894467	MOTOR HOUSING
7	905380	GUARD	78	899923	DEC PLATE
8	905378	MOUNT	79	1246140	M6.4 FLAT WASHER
9	1342998	SPRING	81	894476	M6X35MM RD HD SCREW
10	1343054	M5 X 10MM CARRIAGE HD SCREW	82	1246043	M5 X 10MM HEX SOC SET SCREW
11	908601	ARBOR BOLT	83	1348263	BRUSH HOLDER
12	1347232	FLANGE	84	1348266	BRUSH
13	900567	BOLT	85	1348267	BRUSH CAP
14	1347289	STOP	100	900030	GUARD LINK
15	1347288	SCREW	101	1347250	STOP SCREW
16	BLADE	SEE CATALOG	102	1246001	M5 X 12MM CHEESE HD SCREW
17	1347233	FLANGE	103	1346291	M5.3 FLAT WASHER
18	901-01-060-0629	5/16-18 X 3/8" HEX HD SCREW	104	1346290	SPACER
20	900025	DUST SHROUD	105	905379	LINKAGE
21	1347290	M6 X 35MM PAN HD SCREW	108	901-02-453-1123	10-32 X 1/2" PAN HD SCREW
22	1243520	M6.1 LOCK WASHER	109	1347296	SPRING PLATE
23	906466	UPPER ARM	110	894489	PIN
24	900026	ACORN NUT	111	894490	RETAINING RING
25	894461	M5 FLAT WASHER	112	901-04-080-0109	1/4-20 X 1 1/2" HEX SOC SET SCREW
27	904-01-010-1614	FLAT WASHER	113	902-01-120-1034	1/4-20 HEX NUT
29	900243	DUST BAG	120	900181	HANDLE
30	894411	1/4X20X3/4" RD HD SCREW	125	900116	KNUCKLE
31	894413	M5 X 20MM SET SCREW	126	901-02-010-0561	10-32 X 3/8" ROUND HD SCREW
32	901-01-060-0609	5/16-18 X 1 1/2" HEX HD SCREW	127	904-01-010-1619	FLAT WASHER
33	900566	SPACER	128	894504	POINTER
34	n A07043	BUSHING	129	901-04-150-1178	1/4-20 X 3/4" HEX SOC SET SCREW
35	900027	SPRING	131	900035	PIVOT BOLT
36	904-01-031-2937	FLAT WASHER	251	905374	CORDSET
37	1342922	5/16-18 LOCKNUT	257	896316	WRENCH
38	1347266	DEFLECTOR	258	894554	1/8" HEX WRENCH
39	901-02-010-0559	10-32 X 1/2" ROUND HD SCREW	259	438-01-007-0042	WIRE NUT
40	1349622	BLOCK	260	900022	PIVOT PIN
41	1350297	08 X 3/4" PAN HD SCREW	261	900023	RETAINING RING
42	905371	TOP HANDLE	262	900024	SLEEVE
45	1087576	08 X 1/2" PAN HD SCREW	263	900028	DUST SHIELD
46	900180	SWITCH COVER	264	900029	END CUP
47	894427	SWITCH	266	900033	PRESSURE CUP
48	905370	HANDLE	268	900047	2.5M HEX WRENCH
49	1348661	WASHER	269	894404	RIVET
50	1348660	WASHER	270	905377	PLATE
51	894429	#8X3/4" PAN HD TAP SCREW	271	905372	LASER POWER SUPPLY
52	894430	CORD CLAMP	272	908622	LASER
53	894431	CORD GROMMENT	273	905373	SWITCH
54	904-02-020-1702	1/4" LOCK WASHER	274	905381	LASER GUARD
55	901-02-010-0501	1/4-20 X 1" ROUND HD SCREW	275	906194	LASER LABEL
56	1340622	M6.4 FLAT WASHER	276	906196	NOSE LABEL R.H.
57	1310157	M6 X 20MM PAN HD SCREW	277	906198	NOSE LABEL L.H.
58	900111	JACKSHAFT	278	905384	WIRE COVER
59	1347291	M6 X 12MM PAN HD SCREW	279	906167	6-32 X 1" SCREW
61	1243407	RETAINING RING	280	906164	6-32 LOCK NUT LOCKNUT
62	1341834	BEARING	281	906168	6-32 X .25 LG. PAN HD. SCREW
63	900115	GEAR HOUSING	282	877797	DUST BOOT
64	894453	ARBOR BUTTON	285	872721	SPRING
65	1346716	M6 X 25MM PAN HD SCREW	286	906165	1/4-28 X .188 LG. SET SCREW
66	894452	RETAINING RING	287	906166	SET SCREW
67	894454	PIN	288	907771	APERTURE LABEL
68	1348261	SPRING	288A	908623	MOUNT
69	1347587	RING	288B	894598	HARDWARE PACK
70	400-08-139-0008	BEARING	267	900034	LOCKING CUP
71	n 894412	ARMATURE	289	1243520	M6.1 LOCK WASHER



# REPLACEMENT PARTS

Ref.			Ref.		
<u>No.</u>	<u>Part No.</u>	<u>Description</u>	<u>No.</u>	<u>Part No.</u>	<u>Description</u>
290	904-01-010-1614	FLAT WASHER	347	894588	8 32X3/8" SCREW
291	904-02-020-1702	1/4" LOCK WASHER	348	894589	STRAP
292	902-01-120-1034	1/4-20 HEX NUT	349	894590	ADJ. PRESSURE SHOE
293	894496	SOCKET WRENCH	350	894591	STRAP
294	1347293	1/2-13 LOCKNUT	351	894592	BUSHING
295	901-02-010-0561	10-32 X 3/8" ROUND HD SCREW	352	894593	CAM BAR
296	894508	CLAMP	353	894594	BUSHING
297	894513	1/4" FLAT WASHER	354	894595	HANGER
298	900133	FENCE SLIDE	355	901-02-010-0582	10-32 X 5/8" ROUND HD SCREW
299	900132	SUPPORT	356	894597	SPRING
300	900131	EXTENSION TABLE	357	894599	FLAT WASHER
301	894517	5/16 FLAT WASHER	358	894581	RETAINING RING
302	904-02-010-1703	5/16" LOCK WASHER	359	895192	PRESSURE PAD
304	894519	5/16X18 X 1 1/4" HEX HD SCREW	360	895193	JAM NUT
305	901-05-163-1126	08-32 X 5/16" PAN HD SCREW	361	895194	SET SCREW
306	901-01-060-0607	5/16X18 X 3/4" HEX BOLT	362	895195	SPRING
307	1346330	CLIP	363	895196	10-32 X 5/8" PAN HD SCREW
308	904-01-010-1610	FLAT WASHER	364	895325	LOCK WASHER
309	904-02-010-1726	LOCK WASHER	365	900018	FENCE SUPPORT ROD
310	900129	RIGHT FOOT	366	900019	FLAT 8.6MX18 WASHER
311	900130	LEFT FOOT	367	900020	5/16- 18 X .75 HEX HD. SCREW
312	894543	FOOT	368	900036	SPRING PIN
313	901-02-010-0504	1/4-20 X 3/4" ROUND HD SCREW	369	900136	LEFT FENCE
314	899876	LABEL	370	900043	SPRING PIN
315	899936	WARNING LABEL	371	900044	SPRING
316	1347252	WASHER	372	900048	DUST SHROUD GUIDE
317	1348257	WARNING LABEL	373	900049	FLAT WASHER
318	908688	BASE	374	900050	10-24 X 5/8" ROUND HEAD SCREW
319	894587	SPRING SUPPORT			
320	1243526	M8.4 FLAT WASHER			
321	894575	1/4" X22MM ROLL PIN			
322	901-01-060-0608	5/16-18 X 7/8" HEX HD SCREW			
323	900135	FENCE			
324	908690	INDEXING RING			
325	901-02-030-0466	08-32 X 3/8" FLAT HD SCREW			
326	1347274	PLATE			
327	1346269	WEAR PAD			
328	908691	TABLE			
329	1347259	STOP STUD			
330	900137	SCALE			
331	900182	INSERT			
332	1310016	5MM DRIVE SCREW			
333	901-02-010-0555	08-32 X 3/8" ROUND HD SCREW			
334	894570	BX720719 (3802) FLAT WASHER			
335	1347253	MITER POINTER			
336	894572	PIVOT BOLT			
337	894573	SCREW			
338	894574	DETENT HOUSING			
339	894576	SPRING			
340	900041	LEVER			
341	900042	CAM			
342	894582	BUSHING			
343	894583	HANDLE			
344	894584	COVER			
345	900183	CAP			
346	894586	M6X25MM HEX HD SCREW			

---

## STANDARD SAFETY EQUIPMENT

In order to promote tool safety, Delta Machinery strictly enforces the policy of repairing or replacing any damaged or missing standard safety equipment on machines presented to Delta Authorized Service Centers for service/repairs. Any product that is presented to a Delta Authorized Service Center for repair with damaged or missing standard safety equipment will have that equipment repaired or replaced and the customer will be charged for any such service/repairs. Customers can avoid such charges only if the missing safety component is supplied to the service center at the time of repair.

This parts list is provided to aid in obtaining service parts. Copies of the instruction and maintenance literature can be obtained through the Delta Technical Publications Department, your service outlet, or by visiting the Delta Website @ [www.deltamachinery.com](http://www.deltamachinery.com).