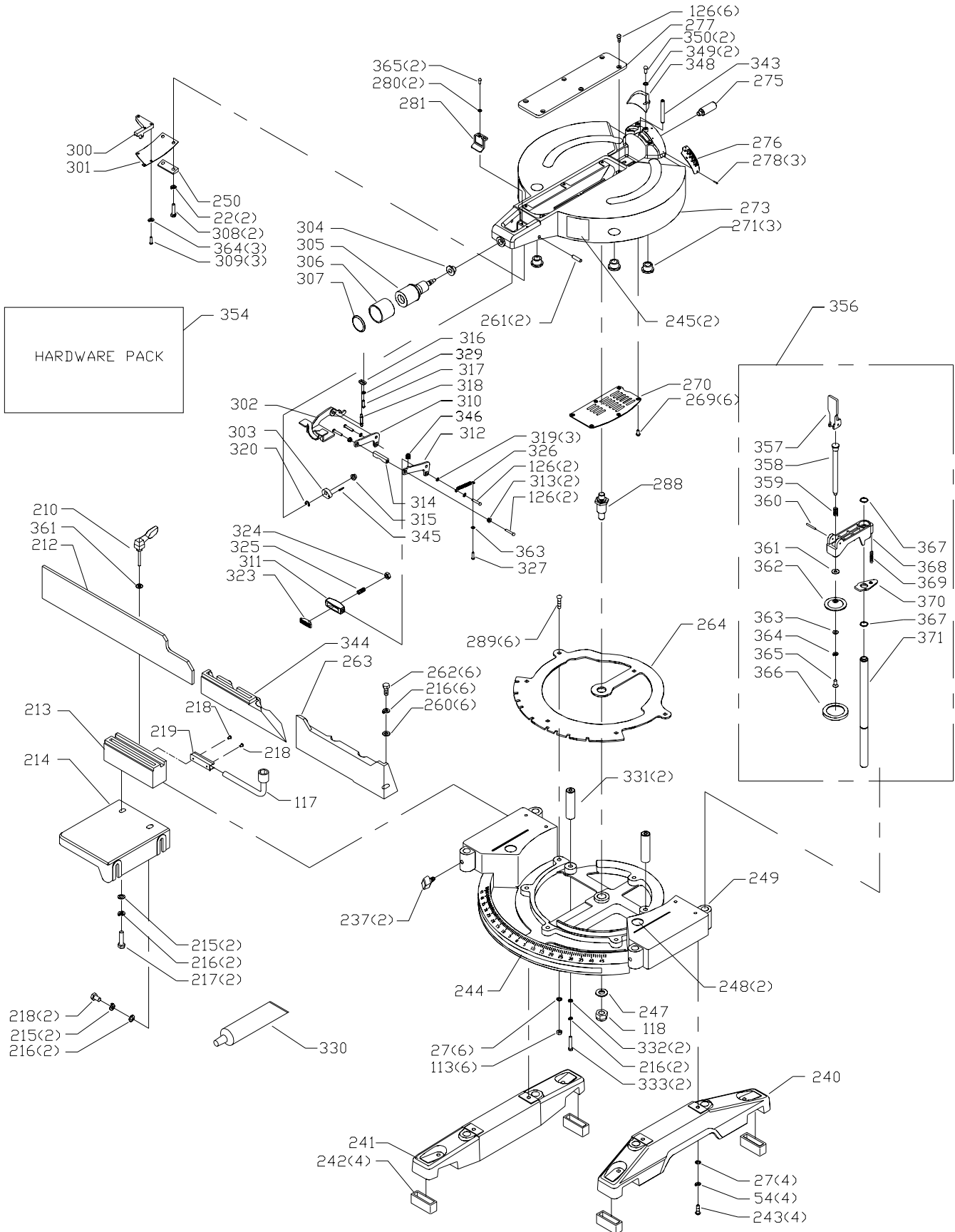


REPLACEMENT PARTS

<u>Ref.</u>	<u>Part No.</u>	<u>Description</u>	<u>Ref.</u>	<u>Part No.</u>	<u>Description</u>
1	901-02-120-1711	10-32 X 3/8" TRUSS HD SCREW	66	894452	RETAINING RING
2	1347287	PUSH NUT	67	894454	LOCK PIN
3	1347286	WHEEL	68	1348261	SPRING
4	1347285	BUSHING	69	1347587	RING
5	1343504	M5 LOCKNUT	70	400-08-139-0008	BEARING
6	1347280	PLATE	71	894412	ARMATURE
7	900261	BLADE GUARD	72	1344026	M5 X .8 X 65MM PAN HD SCREW
8	900112	BLADE GUARD MOUNT, CF	73	1343538	LOCK WASHER
9	1342998	SPRING	74	894539	FIELD
10	1343054	M05 X 0.8 X 10MM CARRIAGE HD S	75	894450	BEARING
11	1342989	ARBOR BOLT	76	1343267	WAVE WASHER
12	1347232	FLANGE	77	894467	MOTOR HOUSING
13	900567	PIVOT BOLT	78	899923	DEC PLATE
14	1347289	GUARD STOP	79	1246140	FLAT WASHER
15	1347288	SPECIAL SCREW	81	894476	M6 X 35MM RD HD SCREW
16	BLADE	SEE CATALOG	82	1246043	M5 X .8 X 10MM HEX SOC SET SCR
17	1347233	FLANGE	83	1348263	BRUSH HOLDER
18	901-01-060-0629	5/16-18 X 3/8" HEX HD SCREW	84	1348266	BRUSH
20	900025	DUST SHROUD	85	1348267	BRUSH CAP
21	1347290	M06 X 1X 35MM PAN HD SCREW	86	894404	BLIND RIVET
22	1243520	LOCK WASHER	87	900336	MOUNTING PLATE
23	900114	UPPER ARM	100	900030	GUARD LINK ASSY.
24	900026	ACORN NUT	101	1347250	STOP SCREW
25	894461	M5 FLAT WASHER	102	1246001	M5 X .8 X 12MM CHEESE HD SCR
27	904-01-010-1614	FLAT WASHER	103	1346291	FLAT WASHER
29	900243	DUST BAG	104	1346290	SPACER
30	894411	1/4-20 X 3/4" RD HD SCREW	105	1347269	LINKAGE
31	894413	M5 X 20MM SET SCREW	108	901-02-453-1123	10-32 X 1/2" PAN HD SCREW
32	901-01-060-0609	5/46-18 X 1 1/2" HEX HD SCREW	109	1347296	SPRING PLATE
33	900566	SPACER	110	894489	PIN
34	n A07043	BUSHING	111	894490	RETAINING RING
35	900027	SPRING	112	901-04-080-0109	1/4-20 X 1/2" HEX SOC SET SCR
36	904-01-031-2937	FLAT WASHER	113	902-01-120-1034	HEX NUT
37	1342922	LOCKNUT	120	900181	HANDLE ASSY.
38	1347266	DEFLECTOR	125	900116	PIVOT JOINT
39	901-02-010-0559	10-32 X 1/2" ROUND HD SCREW	126	901-02-010-0561	10-32 X 3/8" ROUND HD SCREW
40	1349622	BLOCK	127	904-01-010-1619	FLAT WASHER
41	1350297	8-32 X 3/4" PAN HD SCREW	128	894504	POINTER
42	894424	TOP HANDLE	129	901-04-150-1178	1/4-20 X 3/4" HEX SOC SET SCR
45	1087576	8-32 X 1/2" PAN HD SCREW	131	900035	PIVOT BOLT
46	900180	SWITCH COVER	251	876731	CORD
47	894427	SWITCH	257	896316	WRENCH
48	894428	BOTTOM HANDLE	258	894554	1/8" HEX WRENCH
49	1348661	WASHER	322	438-01-007-0042	WIRE NUT
50	1348660	WASHER	328	895326	LEAD
51	894429	8-32 X 3/4" PAN HD TAP SCREW	335	900023	RETAINING RING
52	894430	CORD CLAMP	336	900024	SLEEVE
53	894431	GROMMET	338	900028	DUST SHIELD
54	904-02-020-1702	LOCK WASHER	339	900029	END CUP
55	901-02-010-0501	1/4-20 X 1" ROUND HD SCREW	340	900031	LOCKNUT 3/8"-24
56	1340622	FLAT WASHER	341	900033	PRESSURE CUP
57	1310157	M6 X 1 X 20MM PAN HD SCREW	342	900034	LOCKING CUP
58	900111	JACKSHAFT	347	900047	2.5M HEX WRENCH
59	1347291	M6 X 1 X 12MM PAN HD SCREW	355	900223	NAMEPLATE
61	1243407	RETAINING RING			
62	1341834	BEARING			
63	900115	GEAR HOUSING			
64	894453	ARBOR BUTTON			
65	1346716	M6 X 1 X 25MM PAN HD SCREW			



REPLACEMENT PARTS

Ref.			Ref.		
No.	Part No.	Description	No.	Part No.	Description
22	1243520	LOCK WASHER	308	894586	M6 X 25MM HEX HD SCREW
27	904-01-010-1614	FLAT WASHER	309	894588	8-32 X 3/8" BUTTON SOC. HD
54	904-02-020-1702	LOCK WASHER	310	894589	STRAP
113	902-01-120-1034	HEX NUT	311	894590	ADJ. PRESSURE SHOE
117	894496	M5 WRENCH	312	894591	STRAP
118	1347293	LOCKNUT	313	894592	BUSHING
126	901-02-010-0561	10-32 X 3/8" ROUND HD SCREW	314	894593	CAM BAR
210	894508	CLAMP LEVER	315	894594	BUSHING
212	900133	FENCE SLIDE	316	894595	HANGER
213	900132	SUPPORT	317	901-02-010-0582	10-32 X 5/8" ROUND HD SCREW
214	900131	TABLE	318	894597	SPRING
215	894517	5/16 FLAT WASHER	319	894599	FLAT WASHER
216	904-02-010-1703	LOCK WASHER	320	894581	RETAINING RING
217	894519	5/16-18 X 1 1/4" HEX HD SCREW	323	895192	PRESSURE PAD
218	901-05-163-1126	08-32 X 5/16" SCREW	324	895193	JAM NUT
219	1346330	CLIP	325	895194	SET SCREW
237	894538	KNOB	326	895195	SPRING
240	900129	RIGHT FOOT	327	895196	8-32 X 5/8" PAN HD SCREW
241	900130	LEFT FOOT	329	895325	10 LOCK WASHER
242	894543	FOOT	330	801945	GREASE
243	901-02-010-0504	1/4-20 X 3/4" ROUND HD SCREW	331	900018	ROD
244	899876	LABEL	332	900019	FLAT WASHER
245	899936	LABEL	333	900020	5/16"-18 HEX HD SCREW
247	1347252	WASHER	334	900022	PIVOT PIN
248	1348257	LABEL	334	900022	PIVOT PIN
249	900128	BASE	343	900036	PIN
250	894587	SUPPORT	344	900136	LEFT FENCE
260	1243526	FLAT WASHER	345	900043	PIN
261	894575	1/4" X 22MM ROLL PIN	346	900044	SPRING
262	901-01-060-0608	5/16-18 X 7/8" HEX HD SCREW	348	900048	GUIDE
263	900135	RIGHT FENCE	349	900049	FLAT WASHER
264	900039	INDEXING RING	350	900050	ROUND HEAD SCREW
269	901-02-030-0466	08-32 X 3/8" FLAT HD SCREW	354	894598	HARDWARE PACK
270	1347274	PLATE			
271	1346269	WEAR PAD			
273	900140	ROTATING TABLE			
275	1347259	STOP STUD	356	900110	CLAMP ASSY., INCL REF.: 357 - 371
276	900137	SCALE	357	900126	CLAMP LEVER
277	900182	INSERT	358	894523	CLAMP PLUNGER
278	1310016	5MM DRIVE SCREW	359	894524	SPRING
280	894570	8 FLAT WASHER	360	894525	4 X 28 MM SPRING PIN
281	1347253	POINTER	361	894513	1/4" FLAT WASHER
288	894572	PIVOT BOLT	362	894527	CLAMP CUP
289	894573	SCREW	363	904-01-010-1610	FLAT WASHER
300	894574	DETENT HOUSING	364	904-02-010-1726	LOCK WASHER
301	894576	SPRING	365	901-02-010-0555	8-32 X 3/8" ROUND HD SCREW
302	900041	LEVER	366	894531	RUBBER CAP
303	900042	CAM	367	894532	RETAINING RING
304	894582	BUSHING	368	900127	CLAMP BODY
305	894583	HANDLE	369	894534	SPRING
306	894584	HANDLE COVER	370	894535	ADJUSTMENT LEVER
307	900183	CAP	371	894537	CLAMP SHAFT

ACCESSORIES: (Optional)

STANDARD SAFETY EQUIPMENT

In order to promote tool safety, Delta Machinery strictly enforces the policy of repairing or replacing any damaged or missing standard safety equipment on machines presented to Delta Authorized Service Centers for service/repairs. Any product that is presented to a Delta Authorized Service Center for repair with damaged or missing standard safety equipment will have that equipment repaired or replaced and the customer will be charged for any such service/repairs. Customers can avoid such charges only if the missing safety component is supplied to the service center at the time of repair.

This parts list is provided to aid in obtaining service parts. Copies of the instruction and maintenance literature can be obtained through the Delta Technical Publications Department, your service outlet, or by visiting the Delta Website @ www.deltamachinery.com.