

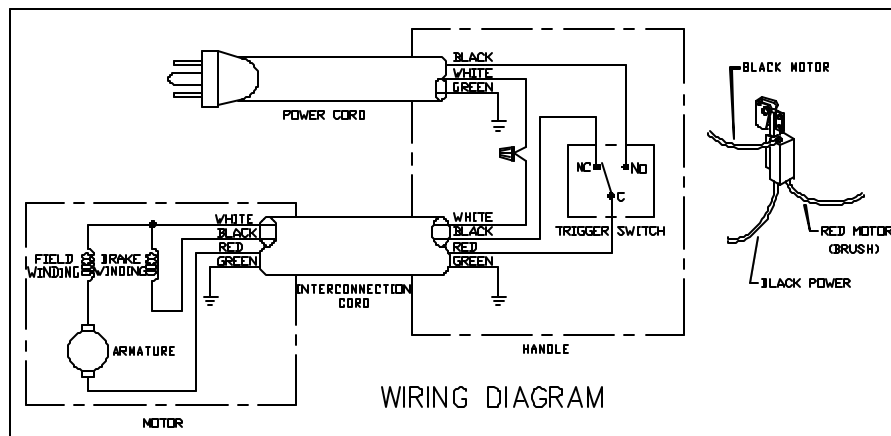
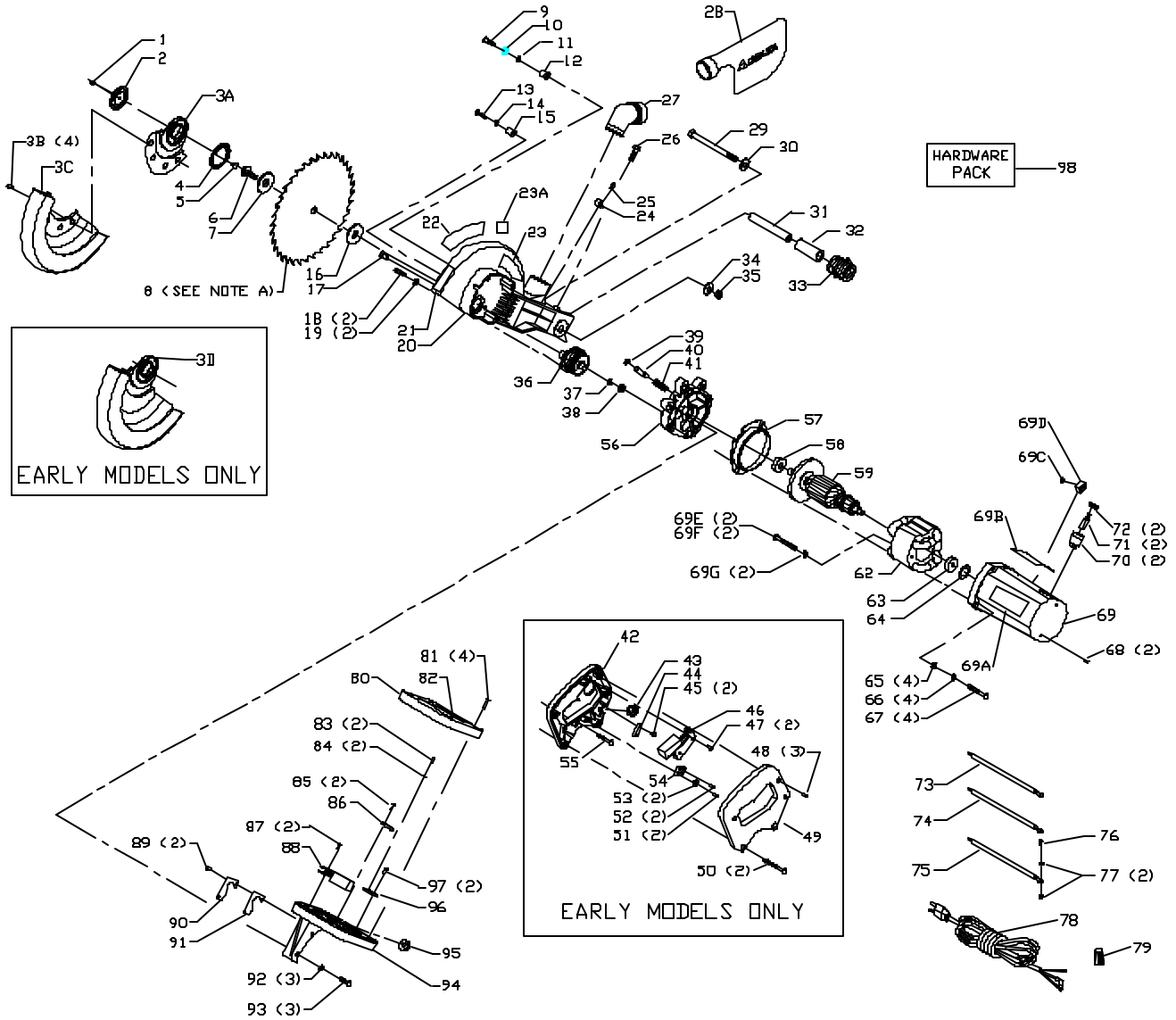


# 36-240 & 36-250 SIDEKICK 10" COMPOUND SLIDE SAW

# MB-4C

PART NO. 902095

Revised: 11-06-02



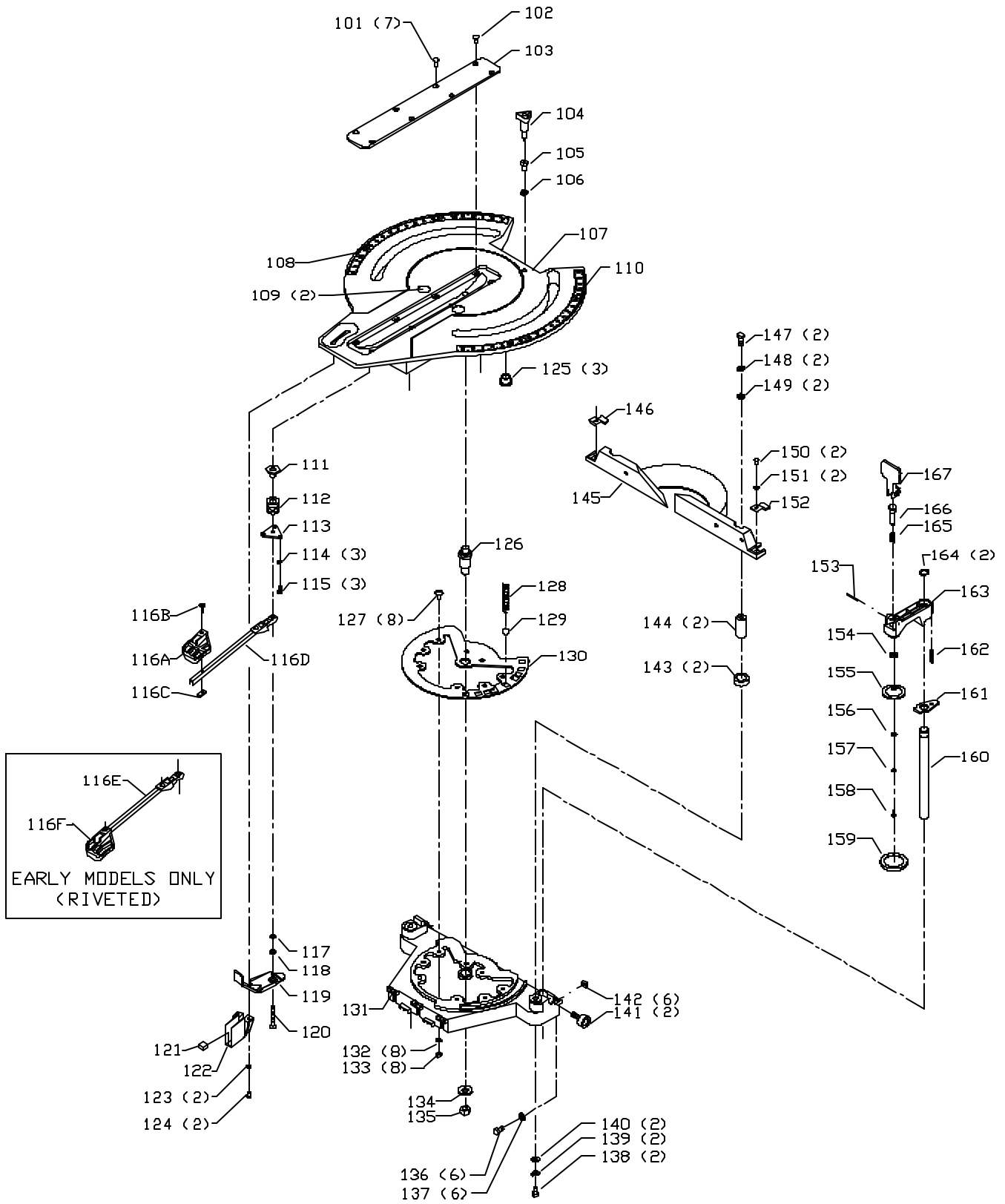
# REPLACEMENT PARTS

Ref.	No.	Part No.	Description	Ref.	No.	Part No.	Description
	1	1343504	M5 LOCK NUT		52	1343526	M4.2 X 15MM PAN HD SCREW
	2	1347280	PLATE		53	1320101	M5.3 EXT TOOTH WASHER
	*	1346354	BLADE GUARD ASSY, CONST OF:		54	1343021	GROUND LUG
	3A	902880	GUARD MOUNT ,T2		55	901-02-010-0501	1/4-20 X 1" ROUND HD SCREW
		1346349	GUARD MOUNT ,T1		56	1346307	GEAR HOUSING
	3B	901-02-120-1711	10-32 X 3/8" TRUSS HD SCREW		57	1347587	RING
	3C	902881	BLADE GUARD ,T2		58	400-08-139-0008	BALL BEARING
		1346347	BLADE GUARD ,T1		59	1347588	ARMATURE
	3D	1346264	BLADE GUARD,SEE NOTE A		62	1348262	FIELD, (SEE NOTE B)
	4	1342998	SPRING		63	920-08-020-5352	BALL BEARING
	5	1343054	M5 X 10MM CARRIAGE HD SCREW		64	1343267	WAVE WASHER
	6	1342989	ARBOR BOLT		65	1246140	M6.4 FLAT WASHER
	7	1342975	FLANGE		66	1243520	M6.1 LOCK WASHER
	8	OPTIONAL	BLADE (SEE NOTE A)		67	1310153	M6 X 55MM CHEESE HD SCREW
	9	901-02-010-0501	1/4-20 X 1" ROUND HD SCREW		68	1246008	M5 X 12MM HEX SOC SET SCREW
	10	904-03-030-1757	1/4" EXT TOOTH WASHER		69	1345470	HOUSING, INCL:
	11	904-01-010-1603	1/4" FLAT WASHER		69A	899923	NAMEPLATE ,T2
	12	1346289	STOP			1344348	NAMEPLATE ,T1
	13	901-02-010-0556	10-32 X 3/4" ROUND HD SCREW		69B	899925	WARNING LABEL ,T2
	14	904-01-010-1609				1344349	WARNING LABEL ,T1
	15	1346292	BUMPER		69C	1343504	M5 LOCK NUT (CMO)
	16	1342975	FLANGE		69D	1349622	BLOCK (CMO)
	17	901-01-060-0629	5/16-18 X 3/8" HEX HD SCREW		69E	1310148	M5 X 60MM PAN HD SCREW (CMO)
	18	1310157	M6 X 20MM PAN HD SCREW		69F	1347613	M5 X 55MM PAN HD SCREW (EMO)
	19	1243520	M6.1 LOCK WASHER		69G	1343538	M5.1 LOCK WASHER
	20	902879	UPPER ARM, INCL: ,T2		70	1348263	BRUSH HOLDER
		1346278	UPPER ARM, INCL: ,T1		71	1348266	BRUSH
	21	1348255	DIRECTION DECAL, TYPE 1 ONLY		72	1348267	BRUSH CAP
	22	899854	NAMEPLATE ,T2		73	1348270	BLACK WIRE
		1344347	NAMEPLATE ,T1		74	1348269	RED WIRE
	23	902685	WARNING LABEL ,T2		75	1348268	GREEN WIRE
	23A	1344349	WARNING LABEL ,T1		76	1347527	M4 X 10MM PAN HD SCREW
	24	1342930	CLAMP		77	1320102	M4.3 EXT TOOTH WASHER
	25	901-05-163-1126	08-32 X 5/16" PAN HD SCREW		78	1345544	POWER CORD
	26	901-01-060-0609	5/16-18 X 1 1/2" HEX HD SCREW		79	438-01-007-0042	WIRE NUT
	27	1345483	SPOUT		80	1347303	TOP HANDLE
	28	900243	DUST BAG ,T2		81	1350297	08 X 3/4" PAN HD SCREW
		34-084	DUST BAG ,T1		82	899917	WARNING LABEL ,T2
	29	1349165	BOLT			1347284	WARNING LABEL ,T1
	30	904-01-031-2937	FLAT WASHER		83	1310143	M5 X 8MM PAN HD SCREW
	31	1346285	SPACER		84	1320101	M5.3 EXT TOOTH WASHER
	32	1346272	BUSHING		85	1087576	08 X 1/2" PAN HD SCREW
	33	1346275	SPRING		86	1345695	CORD CLAMP
	34	904-01-031-2937	FLAT WASHER		87	1087576	08 X 1/2" PAN HD SCREW
	35	1342922	5/16-18 LOCK NUT		88	1346333	SWITCH
	*	1348264	MOTOR ASSY, CONST OF:		89	1342063	M3.5 X 10MM PAN HD SCREW
	36	1348265	JACKSHAFT ASSY, INCL:		90	1347301	COVER PLATE
	37	1341016	EXT RET RING		91	1346896	INSULATOR
	38	1344003	NEEDLE BEARING		92	1246140	M6.4 FLAT WASHER
	39	1330258	EXT RET RING		93	901-02-010-0501	1/4-20 X 1" ROUND HD SCREW
	40	1345474	LOCK PIN		94	1347304	LOWER HANDLE
	41	1348261	SPRING		95	1343019	3/8" GROMMET
	42	1346310	HANDLE		96	1343021	GROUND LUG
	43	1343019	3/8" GROMMET		97	1087576	08 X 1/2" PAN HD SCREW
	44	1345695	CORD CLAMP		98	n HP36240	HARDWARE PACK, 36-240
	45	1343526	M4.2 X 15MM PAN HD SCREW			n HP36250	HARDWARE PACK, 36-250
	46	1346333	SWITCH				
	47	1343526	M4.2 X 15MM PAN HD SCREW		*		NOT SHOWN ASSEMBLED
	48	1343051	M4.2 X 20MM PAN HD SCREW				EMO=EARLY MODELS ONLY
	49	1346311	HANDLE				CMO=CURRENT MODELS ONLY
	50	901-02-010-0505	1/4-20 X 2" ROUND HD SCREW				
	51	1310143	M5 X 8MM PAN HD SCREW				

**NOTE:** USE CROSS CUT BLADES ONLY! DO NOT USE BLADES DESIGNED FOR RIPPING, COMBINATIONS BLADES, OR BLADES WITH EXCESSIVE HOOK ANGLES.

**NOTE A:** REF. 3D HAS BEEN REPLACED BY BLADE GUARD ASSY. 1346354 AND REF. 209 ON PAGE 6, LINK 1346353.

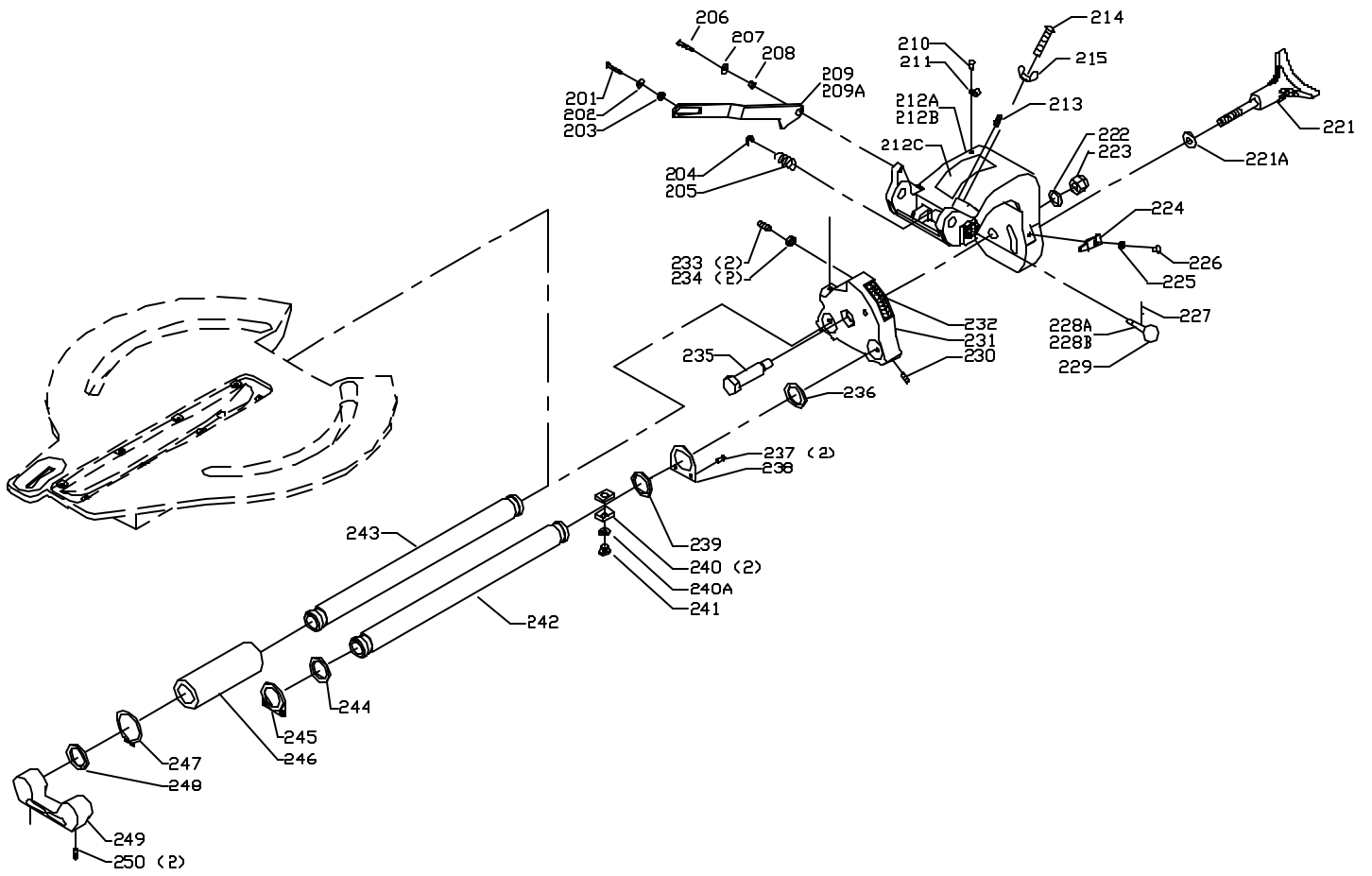
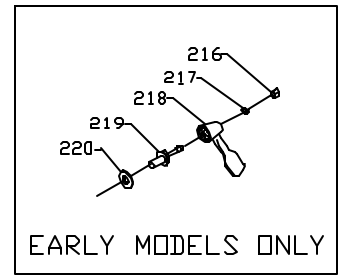
**NOTE B:** USE REF 69E SCREWS WITH THIS FIELD



# REPLACEMENT PARTS

Ref.	No.	Part No.	Description	Ref.	No.	Part No.	Description
	101	901-02-030-0455	10-32 X 1/2" FLAT HD SCREW		132	904-01-010-1603	1/4" FLAT WASHER
	102	1344117	10-32 X 3/8" FLAT HD SCREW		133	1350280	1/4-20 LOCK NUT
	103	902882	INSERT ,T2		134	904-01-030-1649	FLAT WASHER
		1346276	INSERT ,T1		135	902-01-201-5463	NUT
	104	902883	KNOB ,T2		136	901-01-060-0605	5/16-18 X 1/2" HEX HD SCREW
		1346343	KNOB ,T1		137	904-01-010-1604	5/16" FLAT WASHER
	105	1346295	BUSHING		138	901-01-060-0607	5/16-18 X 3/4" HEX HD SCREW
	106	1346296	NUT		139	904-02-010-1703	5/16" LOCK WASHER
	107	902884	TABLE, INCL: ,T2		140	1243526	M8.4 FLAT WASHER
		1346256	TABLE, INCL: ,T1		141	1346342	KNOB
	108	902691	MITER SCALE LH ,T2		142	902-02-040-1303	5/16-18 SQUARE NUT
		1346328	MITER SCALE LH ,T1		143	1346284	SPACER
	109	1348257	WARNING LABEL		144	1346283	SUPPORT
	110	902693	MITER SCALE RH ,T2		145	902888	FENCE ,T2
		1346329	MITER SCALE RH ,T1			1346254	FENCE ,T1
	111	1346305	RETAINER		146	1346265	POINTER LH
	112	1346306	SPRING		147	901-01-060-0607	5/16-18 X 3/4" HEX HD SCREW
	113	1346302	PLATE		148	904-02-010-1703	5/16" LOCK WASHER
	114	904-02-020-1725	3/16" LOCK WASHER		149	1243526	M8.4 FLAT WASHER
	115	901-02-010-0559	10-32 X 1/2" ROUND HD SCREW		150	901-02-010-0551	10-32 X 1/4" ROUND HD SCREW
	116A	1346351	RELEASE HANDLE KIT, INCL:		151	904-01-010-1609	FLAT WASHER
	116B	1346355	SPECIAL SCREW		152	1346266	POINTER RH
	116C	1346352	SPECIAL NUT		* n	902887	CLAMP ASSY, INCL: ,T2
	116D	1346356	BAR ASSY		*	1348272	CLAMP ASSY, INCL: ,T1
	116E	1346260	HANDLE ASSY (SEE NOTE D), INCL:		153	1246023	M4 X 28MM SPRING PIN
	116F	1346351	RELEASE HANDLE		154	904-01-010-1603	1/4" FLAT WASHER
	117	1349163	SPECIAL WASHER		155	1342915	CUP
	118	1350280	1/4-20 LOCK NUT		156	904-01-010-1602	3/16" FLAT WASHER
	119	1346304	STRAP		157	904-02-010-1726	LOCK WASHER
	120	1346308	SPECIAL SCREW		158	901-02-010-0555	08-32 X 3/8" ROUND HD SCREW
	121	1348271	BUMPER		159	1342944	RUBBER CAP
	122	1346261	GUARD		160	1346313	SHAFT
	123	904-01-010-1609	FLAT WASHER		161	1346318	LEVER
	124	901-02-010-0561	10-32 X 3/8" ROUND HD SCREW		162	1346338	SPRING
	125	1346269	WEAR PAD		163	1346319	BODY
	126	1346271	PIVOT BOLT		164	1348273	RETAINING RING
	127	901-11-020-0821	1/4-20 X 3/4" CARRIAGE HD SCREW		165	1346337	SPRING
	128	1346340	SPRING		166	1346312	PLUNGER
	129	1342880	STEEL BALL		167	902886	LEVER ,T2
	130	1346277	INDEX RING			1346316	LEVER ,T1
	131	902885	FRAME ,T2		*		NOT SHOWN ASSEMBLED
		1346255	FRAME ,T1				

**NOTE D:** HANDLE ASSEMBLY 1346260, REF. 116E, HAS BEEN REPLACED BY RELEASE HANDLE KIT 134635, REF. 116A, AND BAR ASSEMBLY 1346356, REF. 116D.



# REPLACEMENT PARTS

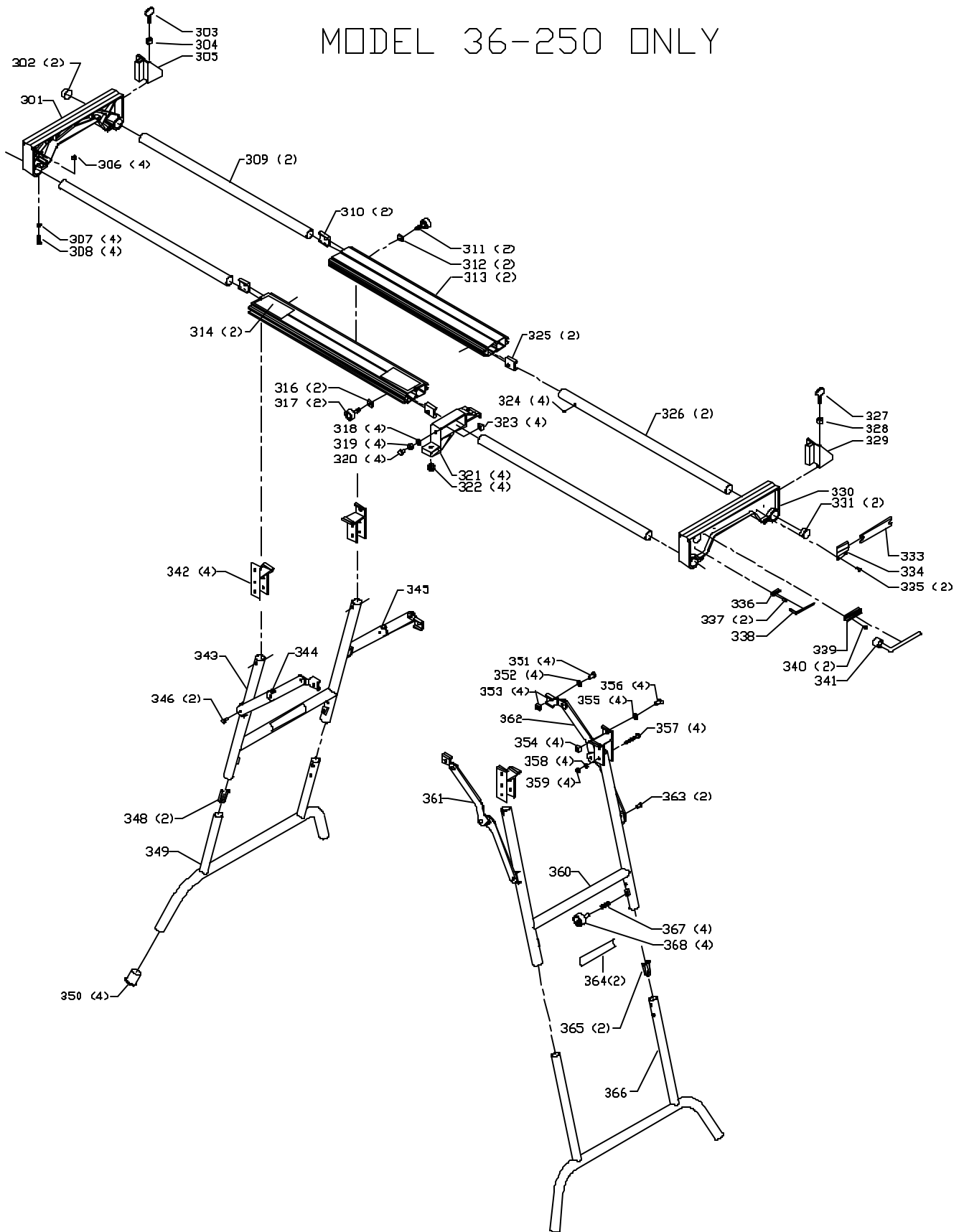
Ref.	No.	Part No.	Description	Ref.	No.	Part No.	Description
	201	901-05-183-1142	10-32 X 5/8" PAN HD SCREW		226	901-02-010-0561	10-32 X 3/8" ROUND HD SCREW
	202	1346291	WASHER		227	1246119	M3 X 16MM SPRING PIN
	203	1346290	SPACER		228A	1346273	PIN, (EMO, SEE NOTE C)
	204	1330670	EXT RET RING		228B	1344906	PIN, (CMO, SEE NOTE C)
	205	1346345	SPRING		229	899887	KNOB ,T2
	206	901-02-010-0559	10-32 X 1/2" ROUND HD SCREW			1345535	KNOB ,T1
	207	1346291	WASHER		230	901-04-150-9440	1/4-20 X 1/2" HEX SOC SET SCREW
	208	1346290	SPACER		231	902890	BLOCK ,T2
	209	1346353	LINK			1346258	BLOCK ,T1
	210	901-02-010-0558	08-32 X 1/4" ROUND HD SCREW		232	902695	SCALE
	211	1342930	CLAMP		233	901-03-010-0750	5/16-18 X 1" HEX SOC HD SCREW
	212A	902889	TRUNNION, (EMO, SEE NOTE C) ,T2		234	902-01-010-1300	5/16-18 HEX NUT
		1346279	TRUNNION, (EMO, SEE NOTE C) ,T1		235	1346274	PIVOT BOLT
	212B	902889	TRUNNION, (CMO, SEE NOTE C) ,T2		236	1346322	BUMPER
		1344907	TRUNNION, (CMO, SEE NOTE C) ,T1		237	901-02-010-0571	08-32 X 1 1/2" ROUND HD SCREW
	212C	902687	OPERATION LABEL ,T2		238	1346268	PLATE
		1348253	OPERATION LABEL ,T1		239	1346346	WASHER
	213	1349153	SCREW		240	1346267	SHOE
	214	901-02-183-1280	5/16-18 X 2" HEX HD SCREW		240A	1349166	SPECIAL WASHER (EMO) - CF
	215	902-04-010-1403	5/16-18 WING NUT		241	1346327	BOLT
	216	1350280	1/4-20 LOCK NUT		242	1349152	ROD RH
	217	904-01-010-1603	1/4" FLAT WASHER		243	1346251	ROD LH
	218	1346281	HANDLE		244	1346346	WASHER
	219	1346282	STUD		245	1349164	PLATE
	220	1243502	M10 FLAT WASHER		246	1349151	BEARING
	221	902878	HANDLE ,T2		247	1348275	RETAINING RING
		1347300	HANDLE ,T1		248	1346322	BUMPER
	221A	904-01-010-1605	3/8" FLAT WASHER		249	1346263	END CAP
	222	1346288	WASHER		250	1348274	SCREW
	223	902-01-201-5463	NUT				
	224	1346572	POINTER				
	225	904-01-010-1609	FLAT WASHER				

EMO=EARLY MODELS ONLY  
CMO=CURRENT MODELS ONLY

**NOTEC :** CURRENT MODEL TRUNNION (REF. 212B), MUST BE USED WITH CURRENT MODEL PIN (5/16" DIA), (REF. NO. 228B).

EARLY MODEL TRUNNION (REF. NO. 212A), MUST BE USED WITH EARLY MODEL PIN (1/4" DIA), (REF. NO. 228A).

# MODEL 36-250 ONLY



# REPLACEMENT PARTS

Ref.

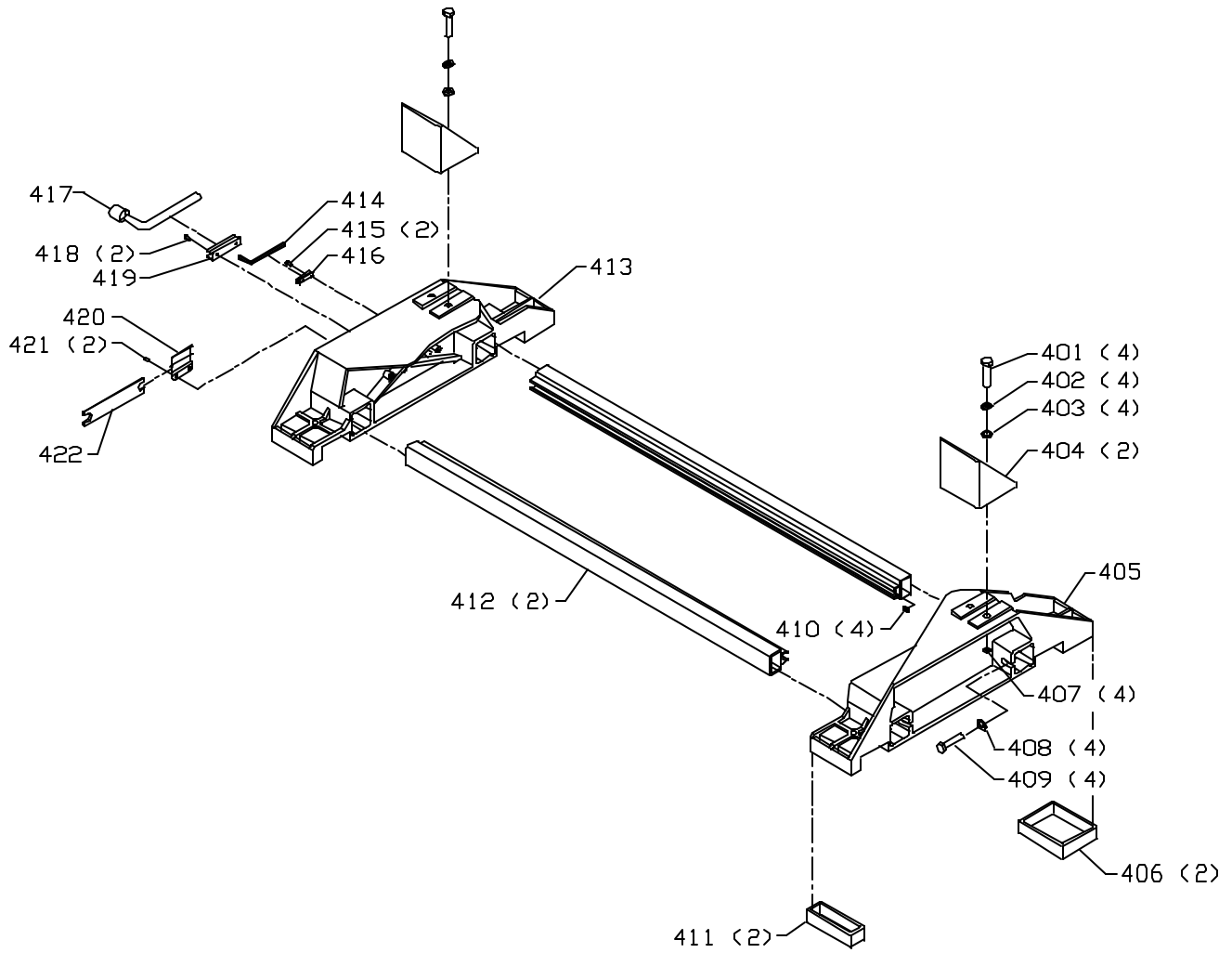
No.	Part No.	Description
301	1346259	EXT WING
302	1349154	PLUG
303	1346335	THUMB SCREW
304	902-01-020-5433	3/8-16 JAM NUT
305	1346262	BLOCK
306	902-01-120-1034	1/4-20 HEX NUT
307	904-01-010-1603	1/4" FLAT WASHER
308	901-02-010-0504	1/4-20 X 3/4" ROUND HD SCREW
309	1346298	ROD
310	1346299	SHOE
311	1346341	KNOB
312	1346339	NUT
313	1346252	RAIL
314	902683	WARNING LABEL ,T2
	1344350	WARNING LABEL ,T1
316	1346339	NUT
317	1346341	KNOB
318	904-01-010-1604	5/16" FLAT WASHER
319	904-02-010-1703	5/16" LOCK WASHER
320	901-01-060-0606	5/16-18 X 5/8" HEX HD SCREW
321	1346320	FOOT
322	1343019	3/8" GROMMET
323	902-02-040-1303	5/16-18 SQUARE NUT
324	1310016	5MM DRIVE SCREW
325	1346299	SHOE
326	1346298	ROD
327	1346335	THUMB SCREW
328	902-01-020-5433	3/8-16 JAM NUT
329	1346262	BLOCK
330	1346259	EXT WING
331	1349154	PLUG
333	1346323	WRENCH
334	1346331	CLIP
335	1310547	M4.2 12MM PAN HD SCREW

Ref.

No.	Part No.	Description
336	1346332	CLIP
337	1310016	5MM DRIVE SCREW
338	422-29-101-0002	4MM HEX WRENCH
339	1346330	CLIP
340	1310547	M4.2 12MM PAN HD SCREW
341	894496	WRENCH
342	1346314	BRACKET
343	1349155	UPPER LEG LH, INCL:
344	1349156	HINGE LH FRONT
345	1349157	HINGE LH REAR
346	1349158	SPECIAL SCREW
348	1346344	DETENT
349	1346321	LEG BOTTOM
350	1346350	RUBBER FOOT
351	901-01-060-0605	5/16-18 X 1/2" HEX HD SCREW
352	904-01-010-1604	5/16" FLAT WASHER
353	1346339	NUT
354	1346339	NUT
355	904-01-010-1604	5/16" FLAT WASHER
356	901-01-060-0605	5/16-18 X 1/2" HEX HD SCREW
357	901-01-060-0619	1/4-20 X 1 3/4" HEX HD SCREW
358	904-01-010-1603	1/4" FLAT WASHER
359	1350280	1/4-20 LOCK NUT
360	1349159	UPPER LEG RH, INCL:
361	1349160	HINGE RH FRONT
362	1349161	HINGE RH REAR
363	1349158	SPECIAL SCREW
364	902679	WARNING LABEL
365	1346344	DETENT
366	1346321	LEG BOTTOM
367	1348674	SPRING
368	1348675	KNOB



# MODEL 36-240 ONLY



# REPLACEMENT PARTS

Ref.

<b>No.</b>	<b>Part No.</b>	<b>Description</b>
401	901-01-060-0649	5/16-18 X 1" HEX HD SCREW
402	904-02-010-1703	5/16" LOCK WASHER
403	904-01-010-1604	5/16" FLAT WASHER
404	1346573	EXTENSION FENCE
405	1346576	SUPPORT RH
406	1346575	REAR FOOT
407	1346339	NUT
408	904-01-010-1604	5/16" FLAT WASHER
409	901-01-060-0607	5/16-18 X 3/4" HEX HD SCREW
410	1346339	NUT
411	1346574	FRONT FOOT
412	1346577	EXTRUSION
413	1346571	SUPPORT LH
414	422-29-101-0002	4MM HEX WRENCH
415	1310016	5MM DRIVE SCREW
416	1346332	CLIP
417	n 894496	WRENCH
418	1340406	M4.2 10MM PAN HD SCREW
419	1346330	CLIP
420	1346331	CLIP
421	1340406	M4.2 10MM PAN HD SCREW
422	1346323	WRENCH

---

## STANDARD SAFETY EQUIPMENT

In order to promote tool safety, Delta Machinery strictly enforces the policy of repairing or replacing any damaged or missing standard safety equipment on machines presented to Delta Authorized Service Centers for service/repairs. Any product which is presented to a Delta Authorized Service Centers for repairs which contains missing or damaged standard safety equipment will have that equipment repaired or replaced and the customer will be charged for any such service/repairs. Customers can avoid such charges only if the missing safety component is supplied to the service center at the time of repair.

*This parts list is provided to aid in obtaining service parts. Copies of the instruction and maintenance literature can be obtained through the Delta Technical Publications Department or through your service outlet.*