

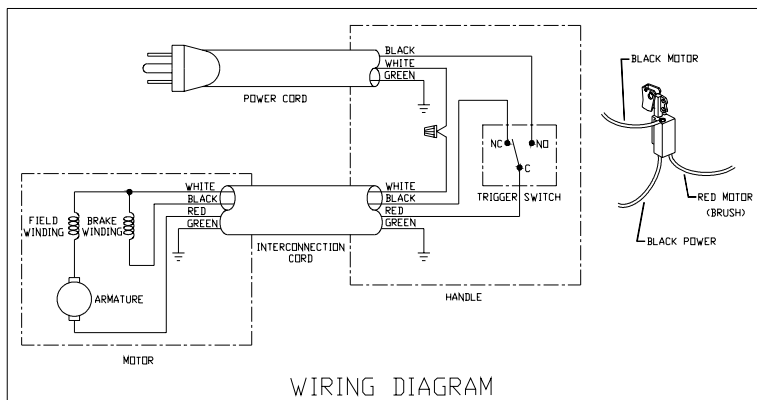
REPLACEMENT PARTS

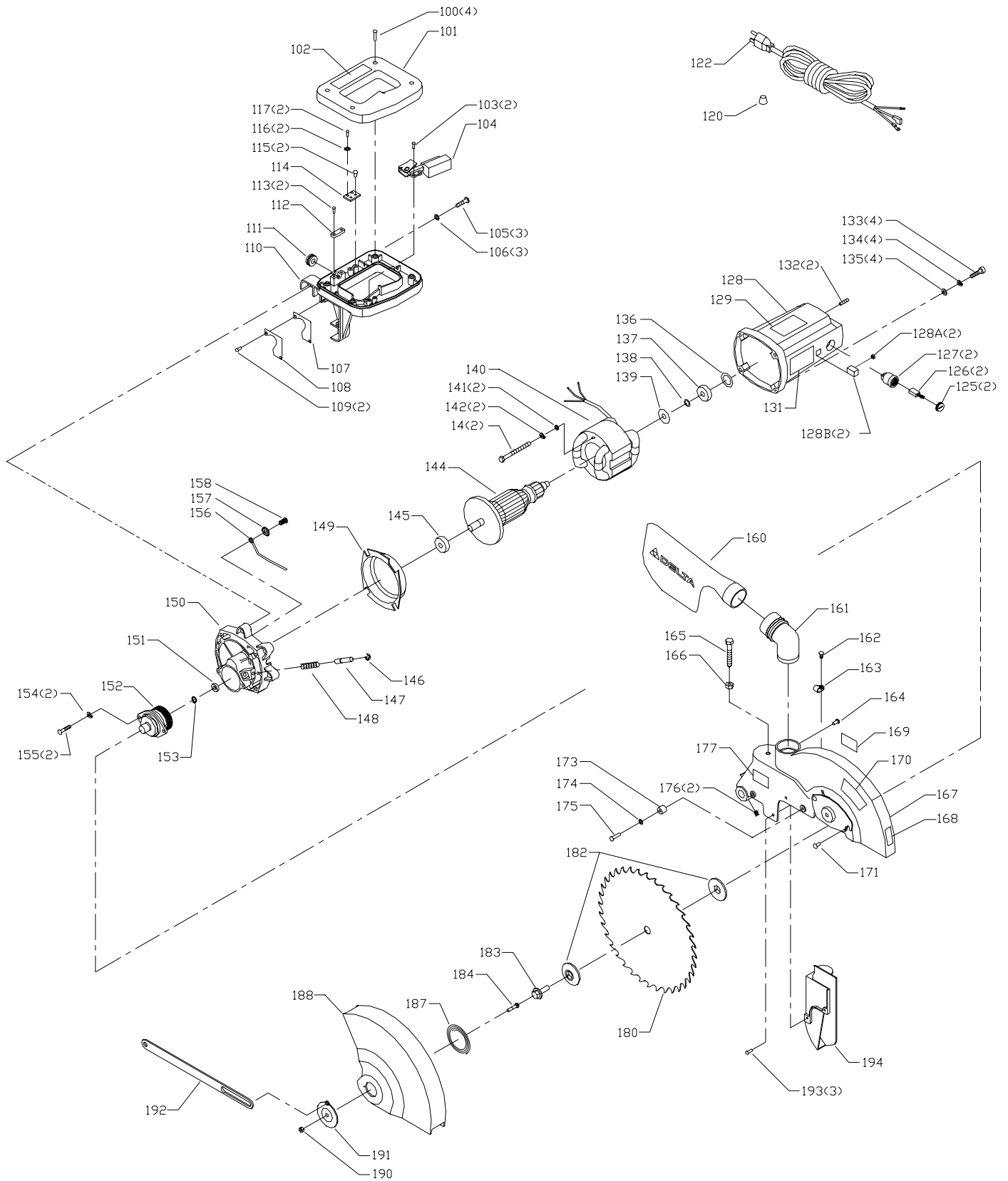
Ref.

No.	Part No.	Description
1	899882	HANDLE, T2
	1349815	HANDLE, T1
2	1310311	M4 X 22MM SPRING PIN
3	1343545	M4.1 FLAT WASHER
4	1243501	M4 X 10MM CHEESE HD SCREW
5	1246045	M6 X 10MM CHEESE HD SCREW
6	1340622	M6.4 FLAT WASHER
7	1349493	PINCH GUARD
9	1343504	M5 LOCK NUT
10	1345461	SHAFT
11	1246051	M5 X 12MM HEX SOC HD SCREW
12	1349489	GUARD LINK PLATE
13	1349953	SPECIAL SCREW
14	900408	TRUNNION, T2
	1345454	TRUNNION, T1
15	1345419	PAD
16	1345533	PIN
17	1345534	O-RING
18	1313165	M16 LOCK NUT
19	899887	KNOB, T2
	1345535	KNOB, T1
20	1345463	RETURN SPRING
21	900236	CUP, T2
	1345462	CUP, T1
22	1345465	PIN
23	1246004	M6 X 16MM HEX SOC HD SCREW
24	1243520	M6.1 LOCK WASHER
25	1345464	BRACKET
26	1310016	5MM DRIVE SCREW
27	n 899888	SCALE, T2
	1345482	SCALE, T1
28	1349810	STUD
29	1246016	M8 X 25MM HEX HD SCREW
30	1246157	M8.1 LOCK WASHER
31	1246127	M6 X 30MM HEX SOC SET SCREW
32	1246175	M6 X 30MM HEX HD SCREW
33	1243456	M6 HEX NUT
34	1345420	BRACKET
35	1246117	M4 X 10MM FLAT HD SCREW
36	899911	TABLE INSERT, T2
	1345421	TABLE INSERT, T1
38	1243581	M4 X 6MM HEX SOC SET SCREW
39	899912	TABLE, T2
	1345422	TABLE, T1
40	900502	HANDLE, T2
	1343012	HANDLE, T1
45	1345468	POINTER
46	1343013	SPRING
47	1343642	M6 LOCK NUT

Ref.

No.	Part No.	Description
48	1342991	CLAMP SHAFT
49	1343642	M6 LOCK NUT
50	1342992	INDEX PIN
51	1342995	INDEX TRIGGER
52	1343009	SPRING
53	1342990	CLAMP
54	1346910	NYLON PAD
55	1342973	PIVOT STUD
56	1343008	NYLON INSERT
58	900409	POINTER, T2
	1345467	POINTER, T1
59	1246102	M5.3 FLAT WASHER
60	1243394	M5 X 10MM CHEESE HD SCREW
61	899914	FENCE (RH), T2
	1345423	FENCE (RH), T1
62	1330147	M8 X 40MM HEX SOC HD SCREW
63	1246157	M8.1 LOCK WASHER
64	899915	FENCE (LH), T2
	1345424	FENCE (LH), T1
65	1330410	M5 X 20MM SPRING PIN
66	1342981	STABILIZER BAR
67	899916	BASE, T2
	1345425	BASE, T1
68	1310016	5MM DRIVE SCREW
69	1343000	SCALE
70	1341947	M8 FLAT WASHER
71	1342123	M8 LOCK NUT
72	1246064	EXT RET RING
73	1345426	SHAFT
74	1345427	EXTENSION WING
75	1346291	M5.3 FLAT WASHER
76	1343538	M5.1 LOCK WASHER
77	1246047	M5 X 16MM CHEESE HD SCREW
*	899983	CLAMP ASSY, T2, CONST OF:
	36-221	CLAMP ASSY, T1, CONST OF:
80	901-02-010-0561	#10-32 X 3/8" ROUND HD SCREW
81	1340608	M6.4 FLAT WASHER
82	1345550	CLAMP CUP
83	1345549	SUPPORT
84	1345547	SHAFT
85	899862	KNOB, T2
	1345546	KNOB, T1
86	1345548	RETAINER
87	901-02-010-0561	#10-32 X 3/8" ROUND HD SCREW
88	1342906	1/2" BLADE WRENCH
89	1348257	WARNING LABEL (CIRCLE), T2
90	1330154	HEX WRENCH
*		NOT SHOWN ASSEMBLED





REPLACEMENT PARTS

Ref.	No.	Part No.	Description	Ref.	No.	Part No.	Description
	100	1350297	#08 X 3/4" PAN HD SCREW	146	1347380		EXT RET RING
	101	n 904369	HANDLE SET - CMO, INCL.: 110	147	n 904378		LOCK PIN
		1347303	TOP HANDLE, EMO, INCL:	148	1348261		SPRING
	102	899917	WARNING LABEL, T2	149	1347587		RING
		1347284	WARNING LABEL, T1	150	899927		GEAR HOUSING, T2
	103	1087576	#08 X 1/2" PAN HD SCREW		1346307		GEAR HOUSING, T1
	104	899883	SWITCH, T2	151	1344003		NEEDLE BEARING
		1346333	SWITCH, T1	152	1345484		JACKSHAFT ASSY, INCL:
	105	1310157	M6 X 20MM PAN HD SCREW	153	1341016		EXT RET RING
	106	1340608	M6.4 FLAT WASHER	154	1243520		M6.1 LOCK WASHER
	107	1345428	INSULATOR	155	1341104		M6 X 20MM CHEESE HD SCREW
	108	1347301	COVER PLATE	156	1349871		GROUND WIRE
	109	1344955	M3.9 X 8MM PAN HD SCREW	157	1320102		M4.3 EXT TOOTH WASHER
	110	n 904369	HANDLE SET - CMO, INCL.: 101	158	1243501		M4 X 10MM CHEESE HD SCREW
		1347304	LOWER HANDLE - EMO	160	900243		DUST BAG, T2
	111	1343019	3/8" GROMMET		34-084		DUST BAG, T1
	112	1345695	CORD CLAMP	161	1345483		SPOUT
	113	1087576	#08 X 1/2" PAN HD SCREW	162	1243394		M5 X 10MM CHEESE HD SCREW
	114	1343021	GROUND LUG	163	438-01-004-0080		CABLE CLAMP 3/8"
	115	1087576	#08 X 1/2" PAN HD SCREW	164	1340406		M4.2 X 10MM PAN HD SCREW
	116	1320101	M5.3 EXT TOOTH WASHER	165	1345536		SPECIAL SCREW
	117	1310143	M5 X 8MM PAN HD SCREW	166	1243398		M8 HEX NUT
	120	438-01-007-0042	WIRE NUT	167	900235		UPPER GUARD ASSY, INCL., T2
	122	1345544	POWER CORD		1345429		UPPER GUARD ASSY, INCL., T1
	125	1345542	BRUSH CAP	168	1348255		DIRECTION DECAL, T1
	126	1345541	BRUSH	169	1346103		WARNING LABEL, T1
	127	1345540	BRUSH HOLDER	170	899854		NAMEPLATE, T2
	128	1345470	HOUSING		1344352		NAMEPLATE, T1
128A	1343504	M5 LOCK NUT		171	1345431		SPECIAL SCREW
128B	1349622	BLOCK		173	1345430		GUARD BUMPER
129	899925	WARNING LABEL, T2		174	1246102		M5.3 FLAT WASHER
		1346104	WARNING LABEL, T1	175	1310006		M5 X 20MM ROUND HD SCREW
131	899923	NAMEPLATE, T2		176	1246137		M5 X 8MM HEX SOC SET SCREW
		1346102	NAMEPLATE, T1	177	1344355		WARNING LABEL, T1
132	1246043	M5 X 10MM HEX SOC SET SCREW		180	OPTIONAL		BLADE (SEE NOTE A)
133	1246091	M6 X 50MM CHEESE HD SCREW		182	1347150		FLANGE
134	1243520	M6.1 LOCK WASHER		183	1342989		ARBOR BOLT
135	1246140	M6.4 FLAT WASHER		184	1343054		M5 X 10MM CARRIAGE HD SCREW
136	1343267	WAVE WASHER		187	1342998		SPRING
137	920-08-020-5352	BALL BEARING		188	899898		LOWER BLADE GUARD, T2
138	1348661	SPECIAL WASHER			1345432		LOWER BLADE GUARD, T1
139	1348660	SPECIAL WASHER		190	1343504		M5 LOCK NUT
140	1345538	FIELD		191	1345433		PLATE
141	1346291	M5.3 FLAT WASHER		192	1345418		LINK
142	1343538	M5.1 LOCK WASHER		193	1340406		M4.2 X 10MM PAN HD SCREW
143	1310148	M5 X 60MM PAN HD SCREW		194	1345434		DUST CHUTE
144	1345539	ARMATURE					
145	400-08-139-0008	BALL BEARING		*			NOT SHOWN ASSEMBLED

NOTE A: USE CROSS CUT BLADES ONLY! DO NOT USE BLADES DESIGNED FOR RIPPING, COMBINATION BLADES OR BLADES WITH EXCESSIVE HOOK ANGLES

STANDARD SAFETY EQUIPMENT

In order to promote tool safety, Delta Machinery strictly enforces the policy of repairing or replacing any damaged or missing standard safety equipment on machines presented to Delta Authorized Service Centers for service/repairs. Any product which is presented to a Delta Authorized Service Centers for repairs which contains missing or damaged standard safety equipment will have that equipment repaired or replaced and the customer will be charged for any such service/repairs. Customers can avoid such charges only if the missing safety component is supplied to the service center at the time of repair.

This parts list is provided to aid in obtaining service parts. Copies of the instruction and maintenance literature can be obtained through the Delta Technical Publications Department or through your service outlet.