



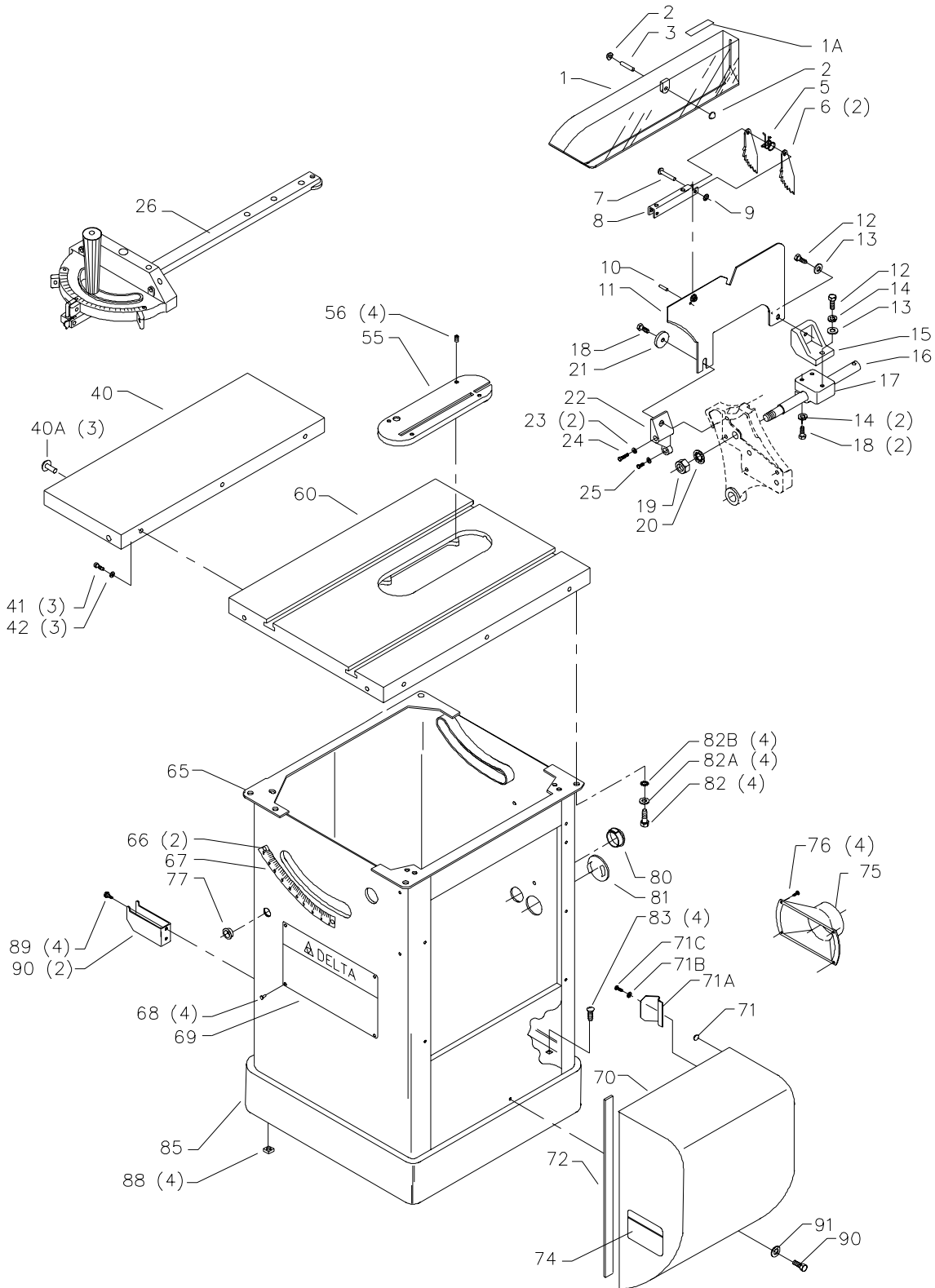
34-801, 34-806, 34-814, & 36-812
10" TILTING ARBOR UNISAW®
RIGHT TILT

CS-4K-15-1

ART NO. 422-04-651-0066

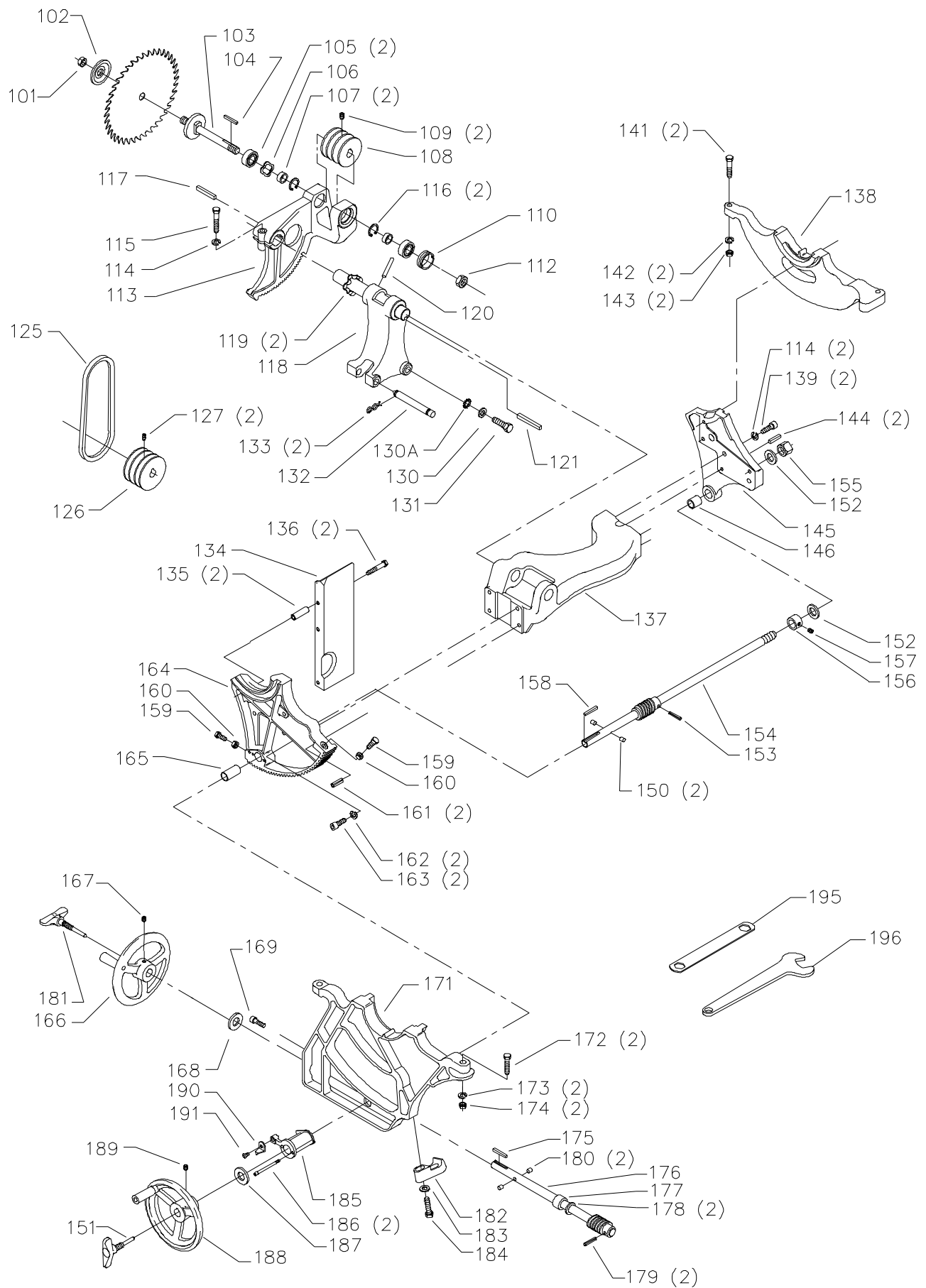
Dated

06-08-04



REPLACEMENT PARTS

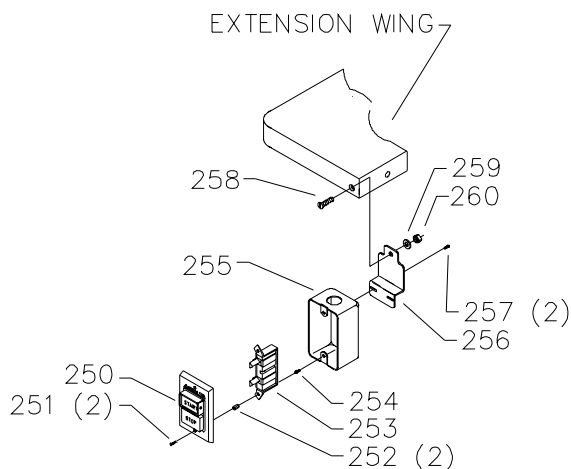
Ref.	Part No.	Description	Ref.	Part No.	Description
*	734639	BLADE GUARD COMPLETE, INCL.:	66	1087794	RIVET
*	1086935	BLADE GUARD, INCL.:	67	422-04-132-0004	TILT SCALE
1	1086334	SEE THRU GUARD	68	1087794	RIVET
1A	422-04-754-0004	LABEL	69	422-04-137-0012	NAMEPLATE, (INDUSTRIAL ONLY)
2	1086388	PUSH NUT CAP		422-04-137-0014	NAMEPLATE, (X SERIES)
3	1087811	PIN		422-04-137-0013	WARNING LABEL, (X SERIES)
5	1086353	SPRING	70	422-04-331-0014	MOTOR COVER , INCL:
6	422-16-047-0001	KICK BACK FINGER	71	410-09-016-0004	BUMPERS - EMO
7	422-04-071-0007	PIN	71A	422-04-122-0005	SPRING CLIP 1 5/8" LONG - CMO
8	1086337	PIVOT BRACKET		422-04-122-0004	SPRING CLIP 1 1/4" LONG - EMO
9	1086387	PUSH NUT	71B	904-01-013-1868	#10 FLAT WASHER
10	905-01-010-6729	5/32" X 11/16" SPRING PIN	71C	901-02-453-1123	10-32 X 1/2 PAN HD SCREW
11	422-04-086-0002	SPLITTER W/BUSHING	72	400-06-416-0003	GASKET 1/2" THICK - CMO
12	901-01-060-0649	5/16-18 X 1" HEX HD SCREW		400-06-416-0001	GASKET 1/4" THICK - EMO
13	904-01-010-1620	FLAT WASHER	74	422-04-752-0184	WARNING LABEL
14	904-02-010-1703	5/16" LOCK WASHER	75	406-12-026-0001	DUST CHUTE
15	422-04-014-0018	BRACKET	76	901-05-213-1498	#10 X 1/2" HEX WASHER HD SCREW
16	422-04-089-0003	SUPPORT ROD	77	438-01-011-0021	INSULATOR
17	422-04-014-0019	BRACKET	80	438-01-011-0065	HOLE PLUG - 1.5" DIA
18	901-01-060-0649	5/16-18 X 1" HEX HD SCREW	81	438-01-011-0074	HOLE PLUG - 2" DIA
19	902-01-020-1226	5/8-18 JAM NUT	82	901-03-010-1487	7/16-20 X 3/4" HEX SOC HD SCREW
20	904-03-020-1751	5/8" INT TOOTH WASHER	82A	904-10-031-2097	WASHER
21	422-03-072-0001	PLATE	82B	904-03-030-1771	7/16 LOCK WASHER
22	422-04-014-0037	SPLITTER BRACKET	83	901-11-020-0834	5/16-18 X 3/4" HEX SOC HD SCREW
23	904-01-010-1620	5/16" FLAT WASHER	85	422-04-305-0001	SUB BASE
24	901-03-013-1698	5/16-18 X 2" HEX SOC HD SCREW	88	902-01-503-1514	5/16 - 18 FLANGE NUT
25	901-03-010-0757	5/16-18 X 3/4" HEX SOC HD SCREW	89	901-05-213-1498	10 X 1/2" HEX HD SCREW
26	34-895	MITER GAGE	90	422-35-014-0002	BRACKET
40	36-937	EXTENSION WING, INCL:	91	901-01-013-1885	1/4" FLAT WASHER
40A	438-01-011-0077	PLUG			
41	901-01-060-9964	7/16-20 X 1 1/4" HEX HD SCREW	*	NOT SHOWN ASSEMBLED	
42	904-10-031-2097	7/16" WASHER			
55	34-154	STANDARD INSERT, INCL:			EMO=EARLY MODELS ONLY
56	901-04-461-5297	1/4-28 X 3/8" HEX SOC SET SCREW			CMO=CURRENT MODELS
60	422-04-391-0003	TABLE			
65	422-04-318-0018	CABINET ASSY , INCL:			



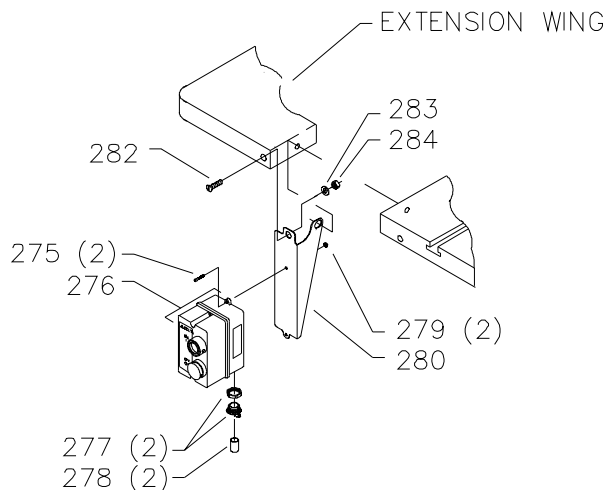
REPLACEMENT PARTS

Ref.	Part No.	Description	Ref.	Part No.	Description
*	422-04-314-5003	ARBOR BRACKET, INCL.:	167	901-04-190-0201	5/16-18 X 5/16" HEX SOC SET SCREW
101	902-01-200-9848	ARBOR NUT - LH	168	904-07-010-5569	3/4" FIBER WASHER
102	422-04-103-5001	FLANGE	169	901-03-040-8016	5/16-18 X 3/4" HEX SOC HD SCREW
103	422-04-303-0003	ARBOR & FLANGE	171	422-04-014-5001	FRONT BRACKET
104	927-03-020-2660	1 1/2" KEY	172	901-01-060-0682	3/8-24 X 1 1/2" HEX HD SCREW
105	1086894	BALL BEARING	173	904-02-020-1704	3/8" LOCK WASHER
106	928-06-020-7382	LOAD SPRING	174	902-01-010-1207	3/8-24 HEX NUT
107	422-04-104-0002	SPACER	175	927-03-010-2650	1 3/8" KEY
108	926-03-991-2328	ARBOR PULLEY, INCL.:	176	422-04-406-5001	TILT SHAFT W/WORM, INCL.:
109	0908653	5/16-18 X 3/8" HEX SOC HD SCREW	177	904-10-031-4509	COLLAR
110	902-07-020-7176	BEARING CLOSURE NUT	178	904-01-021-3577	3/4" FIBER WASHER
112	902-01-200-9847	SPECIAL NUT	179	905-01-010-2706	3/16" X 1" SPRING PIN
113	422-04-314-5002	ARBOR BRACKET, INCL.:	180	422-04-074-0001	PLUG
114	904-02-020-1704	3/8" LOCK WASHER	181	422-04-412-0009	LOCK KNOB, (INDUSTRIAL ONLY)
115	901-01-060-3102	3/8-16 X 1 3/4" HEX HD SCREW		422-04-412-0011	LOCK KNOB, (X SERIES)
116	904-15-101-7147	INTERNAL RETAINING RING	182	422-04-055-0006	GUIDE BLOCK
117	927-03-010-2653	1 15/16" KEY	183	904-10-031-2097	WASHER
118	422-04-314-5004	MOTOR BRACKET W/SHAFT, INCL.:	184	901-01-060-0681	7/16-20 X 1 1/2" HEX HD SCREW
119	928-06-011-4128	1 1/4" WAVE WASHER	185	422-04-014-2008	POINTER BRACKET
120	905-01-010-5072	1/4" X 2" SPRING PIN	186	0919714	8-32 X 2" FILL HD SCREW
121	927-03-010-2657	2.937" KEY	187	904-07-010-5569	3/4" FIBER WASHER
125	49-124	SET OF 3 V-BELTS	188	422-04-400-0005	HANDWHEEL, INCL., (INDUSTRIAL ONLY)
126	41-644	MOTOR PULLEY, INCL.:		422-04-412-0011	HANDWHEEL, INCL., (X SERIES)
127	0908653	5/16-18 X 3/8" HEX SOC HD SCREW	189	901-04-190-0201	5/16-18 X 5/16" HEX SOC SET SCREW
130	904-10-031-2097	7/16" WASHER	190	422-04-075-0002	POINTER
130A	904-03-030-1771	7/16" LOCK WASHER	191	901-06-110-3036	1/4-20 X 3/8" ROUND HD SCREW
131	901-01-060-0664	7/16-20 X 1" HEX HD SCREW	**	438-01-004-0054	CABLE TIE (NOTE A)
132	422-04-071-5001	STEEL PIN	195	422-39-101-0001	7/8 X 1/2" WRENCH
133	422-04-079-5001	SPRING CLIP	196	955-01-050-1472	WRENCH
134	422-04-036-5001	DEFLECTOR	**	83-621	1 PH 1.5HP 230V MOTOR-MARATHON
135	422-04-104-5005	SLEEVE	**	n 438-02-314-6201	1 PH 3HP 230V MOTOR - WEG
136	901-01-060-0613	5/16-18 X 1 3/4" HEX HD SCREW	**	83-651	1 PH 3HP 230V MOTOR-MARATHON
137	422-04-102-5002	YOKE	**	n 438-02-314-6200	1 PH 5HP 230V MOTOR - WEG
138	422-04-014-0042	BRACKET	**	83-671	1 PH 5HP 230V MOTOR-MARATHON
139	901-03-010-0775	3/8-16 X 1" HEX SOC HD SCREW	**	n 438-02-314-6202	3 PH 5HP 230V MOTOR - WEG
141	901-01-060-0682	3/8-24 X 1 1/2" HEX HD SCREW	**	86-656	3 PH 5HP 230V MOTOR-MARATHON
142	904-02-020-1704	3/8" LOCK WASHER			
143	902-01-010-1207	3/8-24 HEX NUT	*		NOT SHOWN ASSEMBLED
144	905-01-010-2734	5/16" X 1" SPRING PIN	**		NOT SHOWN
145	422-04-395-5002	REAR TRUNNION, INCL.:			
146	920-75-011-3934	BEARING			
*	422-04-406-5002	RAISING SHAFT ASSY, INCL.:			
150	422-04-074-0001	PLUG			
151	422-04-412-0009	LOCK KNOB, (INDUSTRIAL ONLY)			
	422-04-412-0011	LOCK KNOB, (X SERIES)			
152	904-01-021-3577	3/4" FIBER WASHER			
153	905-01-010-2706	3/16" X 1" SPRING PIN			
154	422-04-406-0001	SHAFT W/WORM, INCL.:			
155	902-01-210-1036	3/4-16 LOCK NUT			
156	434-01-404-0001	COLLAR, INCL.:			
157	901-04-190-0201	5/16-18 X 5/16" HEX SOC SET SCREW			
158	927-03-010-2650	1 3/8" KEY			
159	901-01-060-5769	5/16-24 X 1" HEX HD SCREW			
160	902-01-020-1228	5/16-24 JAM NUT			
161	905-01-010-2734	5/16" X 1" SPRING PIN			
162	904-02-020-1704	3/8" LOCK WASHER			
163	901-03-010-0775	3/8-16 X 1" HEX SOC HD SCREW			
164	422-04-395-5001	FRONT TRUNNION, INCL.:			
165	920-75-011-3935	BUSHING			
166	422-04-400-0005	HANDWHEEL, INCL., (INDUSTRIAL ONLY)			
	422-04-400-0007	HANDWHEEL, INCL., (X SERIES)			

NOTE A: USED TO SECURE MOTOR SWITCH CORDS, SEE INSTRUCTION MANUAL FOR DETAILS.



FOR USE WITH LVC MODELS ONLY



FOR USE WITH GPE MODELS ONLY

Ref.

No.	Part No.	Description
250	1340100	SWITCH COVER ASSY
251	901-02-010-0567	#06-32 X 1/4" ROUND HD SCREW
252	402-07-104-5007	SPACER
253	438-01-017-0101	MAGNETIC SWITCH
254	402-07-111-5002	STUD
255	438-01-001-0036	SWITCH BOX
256	422-40-014-0006	MOUNTING BRACKET
257	901-05-163-1126	#08-32 X 5/16" PAN HD SCREW
258	901-03-033-1881	5/16-18 X 1 1/4" FLAT HD SCREW
259	904-01-010-1620	FLAT WASHER
260	902-01-010-1300	5/16-18 HEX NUT
275	901-02-453-1123	#10-32 X 1/2" PAN HD SCREW
276	438-01-016-0199	STARTER,GPE,1PH,230V, INCL:
277	438-01-004-0007	CORD CLAMP
278	438-01-011-0054	INSULATOR SLEEVE
279	902-01-293-1513	#10-32 KEPS NUT
280	n 422-40-014-0014	MOUNTING BRACKET
282	901-03-033-1881	5/16-18 X 1 1/4" FLAT HD SCREW
283	904-01-010-1620	FLAT WASHER
284	902-01-010-1300	5/16-18 HEX NUT

STANDARD SAFETY EQUIPMENT

In order to promote tool safety, Delta Machinery strictly enforces the policy of repairing or replacing any damaged or missing standard safety equipment on machines presented to Delta Authorized Service Centers for service/repairs. Any product that is presented to a Delta Authorized Service Centers for repairs which contains missing or damaged standard safety equipment will have that equipment repaired or replaced and the customer will be charged for any such service/repairs. Customers can avoid such charges only if the missing safety component is supplied to the service center at the time of repair.

This parts list is provided to aid in obtaining service parts. Copies of the instruction and maintenance literature can be obtained through the Delta Technical Publications Department or through your service outlet.