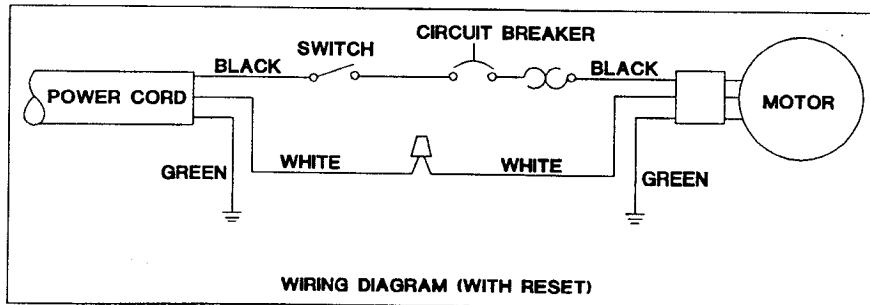
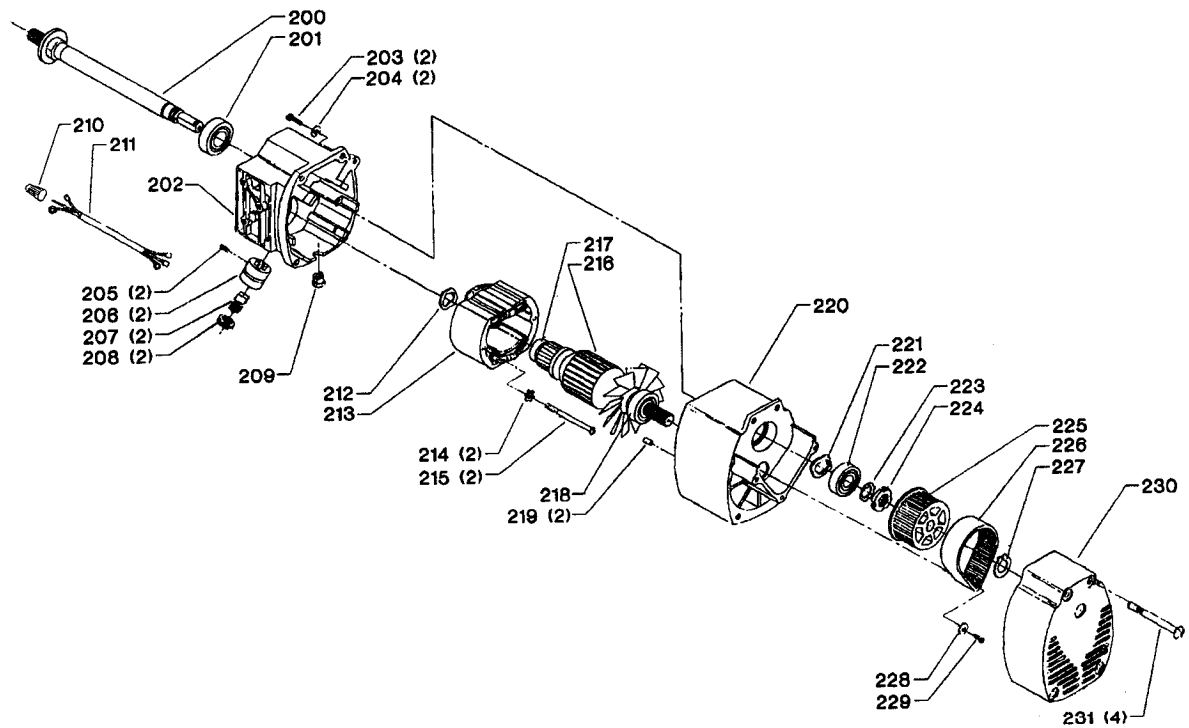
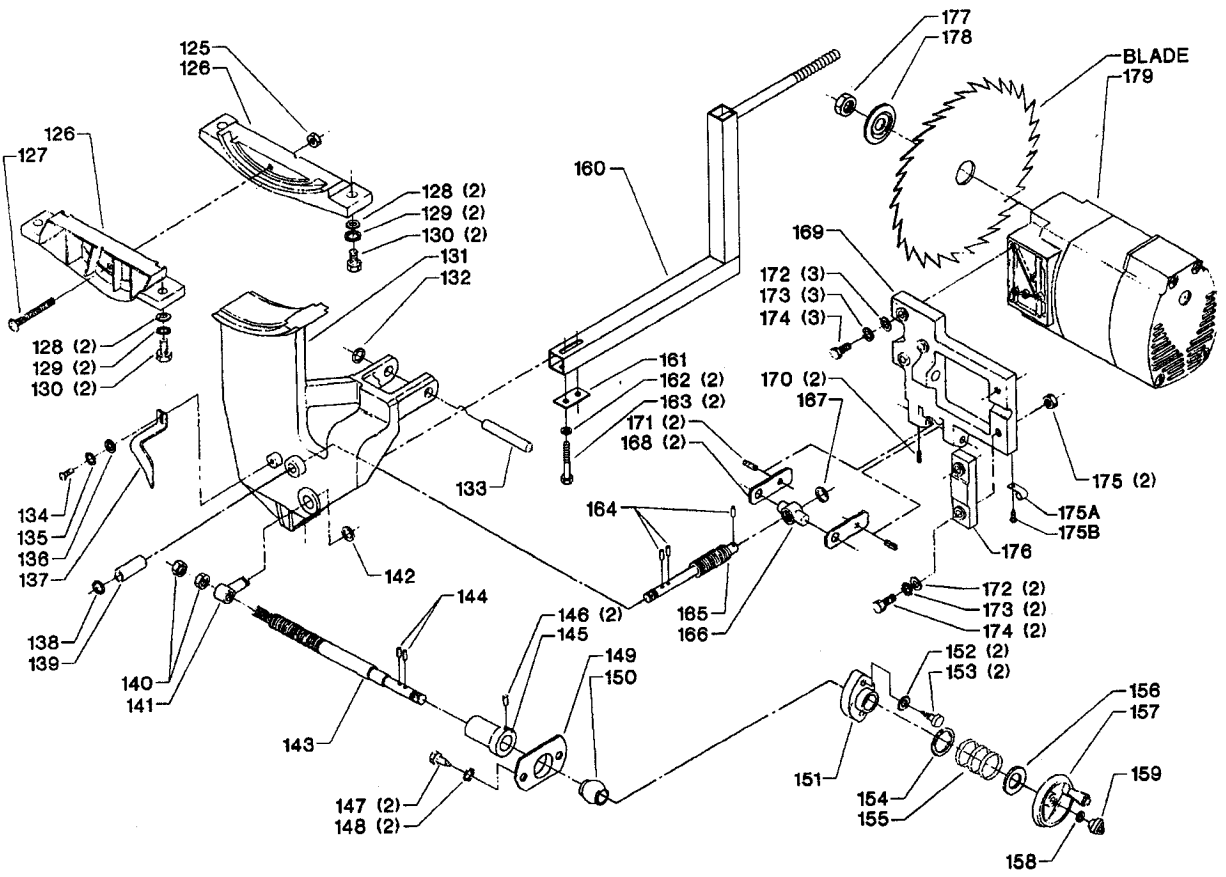


REPLACEMENT PARTS

REF. NO.	PART NUMBER	DESCRIPTION	REF. NO.	PART NUMBER	DESCRIPTION
1	34-678	TABLE INSERT, INCL;	51	1310055	(DIN 913) M6 X 6MM HEX SOC SET
2	1246135	(DIN 963) M6 X 16MM FLAT HD SCR	52	1313243	POINTER
3	1313226	RUBBER WASHER	53	1345220	GUIDE BAR
4	1342660	REAR GUIDE RAIL	53A	422-04-072-0001	PLATE
5	1243398	(DIN 934) M8 HEX NUT	53B	901-02-030-5750	1/4-28 X 5/16" FLAT HD SCR
6	904-01-031-2926	FLAT WASHER	54	1313245	STOP LINK
7	1345211	TABLE	*	1313282	BLADE GUARD ASSY, CONST OF;
8	1310105	(DIN 933) M8 X 16MM HEX HD SCR	55	1313270	PUSH NUT
9	904-02-010-1703	5/16" LOCK WASHER	56	1313271	PIN
10	904-01-010-1605	3/8" FLAT WASHER	57	1313272	"SEE THRU" BLADE GUARD
11	1342662	SPACER	58	1313273	PIN
12	1342663	SPECIAL SCR	59	1313274	GUARD BRACKET
13	1342709	EXT RAIL	60	1313275	LOCK RING
14	1342710	ADAPTER	61	1313276	SPRING
15	1342661	FRONT GUIDE RAIL	62	1313277	SPLITTER
16	1342691	END PLUG	63	1313278	BUSHING
17	1313215	EXT. WING	64	1313279	ANTI-KICKBACK FINGER
18	1313221	CABINET	65	1310311	(DIN 1481) M4 X 22MM SPRING PIN
19	904-01-010-1605	3/8" FLAT WASHER	66	1246015	(DIN 933) M6 X 20MM HEX HD SCR
20	904-02-010-1703	5/16" LOCK WASHER	67	904-03-030-1757	1/4" EXT TOOTH WASHER
21	1310105	(DIN 933) M8 X 16MM HEX HD SCR	68	904-01-010-1604	5/16" FLAT WASHER
22	1313219	COVER	69	1313280	BRACKET
23	1313218	PUSH PIN	70	1243476	(DIN 934) M12 HEX NUT
24	1086491	HANDWHEEL ASSY	71	904-01-010-1608	5/8" FLAT WASHER
25	1313239	WASHER	72	1313281	(DIN 315) M6 WING NUT
26	1313223	KNOB	*	1342673	FENCE ASSY, CONST OF;
27	1346946	NAMEPLATE	73	1341153	(DIN 933) M8 X 12MM HEX HD SCR
28	1087576	#8 X 1/2" PAN HD SCR	74	1246157	(DIN 7980) M8.1 LOCK WASHER
29	1313227	(DIN 7513B) M4 X 12MM CHEESE HD SCR	75	1342674	FENCE
30	1310162	(DIN 85) M5 X 12MM PAN HD SCR	76	1342675	REAR CLAMP BLOCK
31	438-01-017-0140	SWTCH, INCL;	77	1342676	PIN
32	400-06-068-0002	SWTCH KEY	78	1342677	SPRING
33	1313230	SWTCH BOX	79	1342678	REAR CLAMP HOOK
34	1313229	BREAKER SWITCH W/PLATE, INCL;	80	1342679	LEVER
35	1313234	HEX NUT	81	1342680	LOCK ROD
36	1313228	NUT	82	1342681	SPRING
37	904-03-030-1795	3/16" EXT TOOTH WASHER	83	1342682	FRONT BLOCK
38	1243395	(DIN 934) M5 HEX NUT	84	1342683	PIN
39	1313220	CLAMP	85	1342684	LEVER
40	1310162	(DIN 85) M5 X 12MM PAN HD SCR	86	1342685	HANDLE
41	1313231	BUSHING	87	1342686	ECCENTRIC
42	1313235	POWER CORD	88	1342687	ADJ SCR
43	1346945	WARNING LABEL	89	1342688	SPRING
*	1345226	MITER GAGE ASSY, CONST OF;	90	1330130	POINTER
44	1342685	HANDLE	91	1340490	(DIN 84) M4 X 8MM CHEESE HD SCR
45	1313241	WASHER	92	1246157	(DIN 7980) M8.1 LOCK WASHER
46	1313242	MITER GAGE BODY	93	1246078	(DIN 933) M8 X 15MM HEX HD SCR
47	1310055	(DIN 913) M6 X 6MM HEX SOC SET SCR	94	1313197	15/16" HEX ARBOR WRENCH
48	1243569	(DIN 934) M4 HEX NUT	95	1313232	7/8" OPEN END WRENCH
49	1310161	(DIN 85) M4 X 18MM PAN HD SCR			
50	1313247	PIN			

* NOT SHOWN ASSEMBLED





REPLACEMENT PARTS

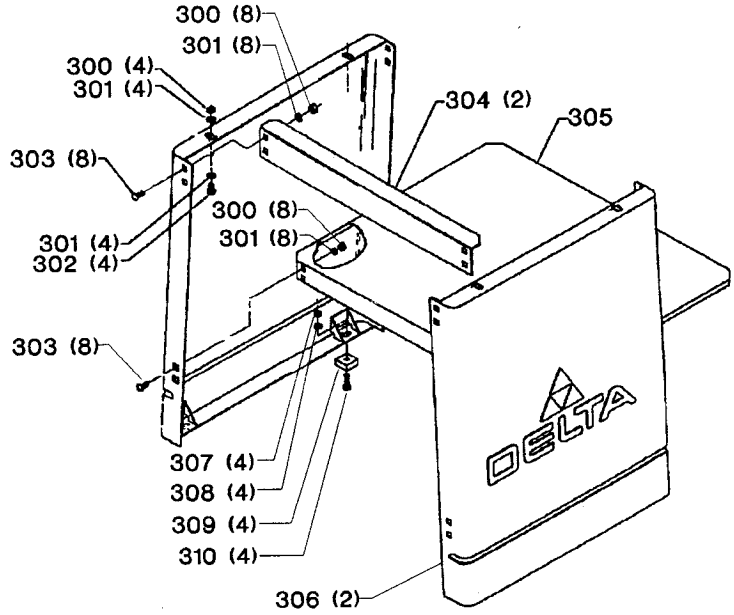
<u>REF. NO.</u>	<u>PART NUMBER</u>	<u>DESCRIPTION</u>	<u>REF. NO.</u>	<u>PART NUMBER</u>	<u>DESCRIPTION</u>
125	1313148	(DIN 985) M6 LOCK NUT	171	1313291	PIN
126	1313286	TRUNNION	172	904-01-010-1620	FLAT WASHER
127	1310154	(DIN 85) M6 X 65MM PAN HD SCR	173	904-02-010-1703	5/16" LOCK WASHER
128	904-01-010-1605	3/8" FLAT WASHER	174	1246017	(DIN 933) M8 X 30MM HEX HD SCR
129	904-02-010-1703	5/16" LOCK WASHER	175	1243398	(DIN 934) M8 HEX NUT
130	1246016	(DIN 933) M8 X 25MM HEX HD SCR	175A	1330682	CLAMP
131	1345235	TRUNNION	175B	1310143	(DIN 85) M5 X 8MM PAN HD SCR
132	1313289	WASHER	176	1313294	SEAT
133	1313290	PIN	177	902-01-201-2567	5/8-18 HEX NUT
134	1310155	(DIN 84) M5 X 8MM CHEESE HD SCR	178	1313292	FLANGE
135	1320101	(DIN 6797A) M5.3 EXT TOOTH WASHER	179	1313314	MOTOR, COMPLETE
136	1340622	M6.4 FLAT WASHER	*	1313314	MOTOR, COMPLETE, CONST OF;
137	1313287	POINTER	200	1313316	SHAFT
138	904-01-010-1606	3/8" FLAT WASHER	201	1313116	BALL BEARING
139	1313300	SPACER	202	1313117	FRONT HOUSING
140	1243496	(DIN 934) M10 HEX NUT	203	1310157	(DIN 85) M6 X 20MM PAN HD SCR
141	1313301	NUT	204	904-02-020-1702	1/4" LOCK WASHER
142	1313299	O-RING	205	1310172	SPECIAL SCR
143	1313305	SHAFT	206	1313112	BRUSH HOLDER
144	1310310	(DIN 1481) M3 X 18MM SPRING PIN	207	1313113	BRUSH
145	1313302	COLLAR	208	1313114	BRUSH CAP
146	1243304	(DIN 913) M6 X 8MM HEX SOC SET SCR	209	1313317	BUSHING
147	1313306	(DIN 7513A) M6 X 18MM PAN HD SCR	210	438-01-007-0009	WIRE NUT
148	904-03-030-1757	1/4" EXT TOOTH WASHER	211	1313318	CABLE
149	1313303	BLOCK	212	1313118	WAVE WASHER
150	1313304	BEARING	213	1313319	FIELD ASSY.
151	1313307	BLOCK	214	904-03-030-1795	3/16" EXT TOOTH WASHER
152	1310216	(DIN 6797A) M8.4 EXT TOOTH WASHER	215	1310148	(DIN 85) M5 X 60MM PAN HD SCR
153	1313308	(DIN 7513B) M8 X 18MM CHEESE HD SCR	216	1313121	ARMATURE ASSY, INCL;
154	1313309	WASHER	217	1313120	BALL BEARING
155	1313310	SPRING	218	1313122	BALL BEARING
156	1313311	SPECIAL WASHER	219	1313207	PIN
157	1086491	HANDWHEEL ASSY	220	1313359	REAR HOUSING
158	1313239	WASHER	221	1313124	WAVE WASHER
159	1313223	KNOB	222	1313122	BALL BEARING
160	1345233	GUARD SUPPORT	223	1313126	LOCKWASHER
161	1345234	PLATE	224	1313127	SHAFT NUT
162	1243520	(DIN 7980) M6.1 LOCK WASHER	225	1313129	PULLEY
163	1246128	(DIN 933) M6 X 40MM HEX HD SCR	226	34-674	DRIVE BELT
164	1310310	(DIN 1481) M3 X 18MM SPRING PIN	227	1246196	EXT RET RING
165	1313295	ELEVATING SHAFT	228	1310195	SPECIAL WASHER
166	1313296	ELEVATING NUT	229	1310143	(DIN 85) M5 X 8MM PAN HD SCR
167	904-01-010-1620	FLAT WASHER	230	1313360	PULLEY COVER
168	1313297	ELEVATING LINK	231	1310158	(DIN 84) M5 X 45MM CHEESE HD SCR
169	1313293	MOTOR BRACKET, INCL;			
170	1246008	(DIN 916) M5 X 12MM HEX SOC SET SCR			

* NOT SHOWN ASSEMBLED

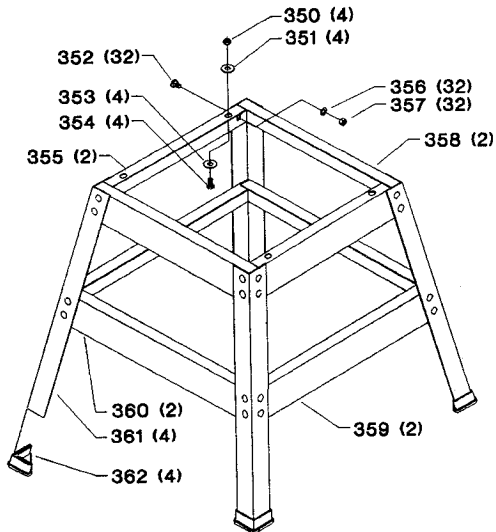
(PANEL STAND ONLY)

REF. NO.	PART NUMBER	DESCRIPTION
*	1313320	STAND ASSY, CONST OF;
300	1243398	(DIN 934) M8 HEX NUT
301	904-01-010-1606	3/8" FLAT WASHER
302	1310105	(DIN 933) M8 X 16MM HEX HD SCR
303	1313325	M8 X 16MM CARRIAGE HD SCR
304	1313323	TIE BAR
305	1313324	SHELF
306	1313322	PANEL
307	1243456	(DIN 934) M6 HEX NUT
308	904-01-010-1604	5/16" FLAT WASHER
309	1313321	FOOT
310	1246015	(DIN 933) M6 X 20MM HEX HD SCR

* NOT SHOWN ASSEMBLED



(OPEN STAND ONLY)



REF. NO.	PART NUMBER	DESCRIPTION
*	1313326	STAND ASSY, CONST OF;
350	1243398	(DIN 934) M8 HEX NUT
351	904-01-010-1606	3/8" FLAT WASHER
352	1313325	M8 X 16MM CARRIAGE HD SCR
353	904-01-010-1606	3/8" FLAT WASHER
354	1310105	(DIN 933) M8 X 16MM HEX HD SCR
355	1342700	BRACKET
356	904-01-010-1605	3/8" FLAT WASHER
357	1243398	(DIN 934) M8 HEX NUT
358	1342701	BRACKET
359	1342703	BRACKET
360	1342704	BRACKET
361	1313327	LEG
362	1342381	PLASTIC FOOT

* NOT SHOWN ASSEMBLED

STANDARD SAFETY EQUIPMENT

In order to promote tool safety, Delta International Machinery Corp. strictly enforces the policy of repairing or replacing any damaged or missing standard safety equipment on machines presented to Delta Authorized Service Centers for service/repair. Any product which is presented to a Delta Authorized Service Center for repairs which contains missing or damaged standard safety equipment will have that equipment repaired or replaced and the customer will be charged for any such service/repairs. Customers can avoid such charges only if the missing safety component is supplied to the service center at the time of repair.

This parts list is provided to aid in obtaining service parts. Copies of the instruction and maintenance literature can be obtained through the Delta Technical Publications Department or through your local service outlet.