

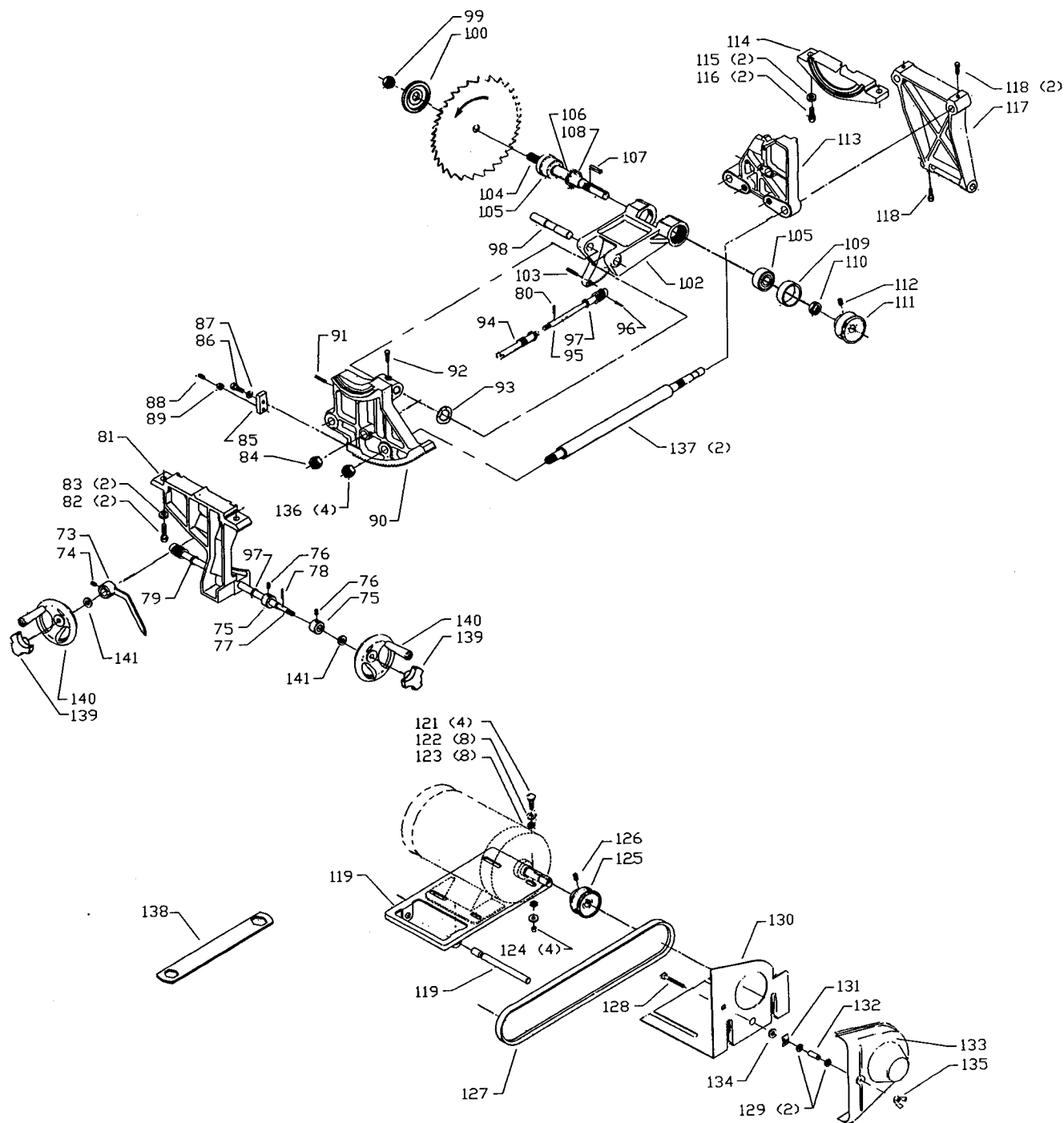
REPLACEMENT PARTS

REF NO	PART NUMBER	DESCRIPTION	REF NO	PART NUMBER	DESCRIPTION
*	34-636	SEE-THRU BLADE GUARD, CONST OF:	*	34-578	MITER GAGE, CONST OF:
*	1086433	GUARD ASSY, CONST OF:	56	904-07-010-5555	1/4" FIBER WASHER
1	1086334	GUARD	57	1087524	KNOB
2	1087811	PIN	58	1086924	SCREW
3	1086388	PUSH NUT CAP	59	1086926	SPRING WASHER
4	422-16-047-0001	KICK BACK FINGER	61	422-34-050-0001	BODY
5	1086353	SPRING	62	1087519	STUD
6	1086387	PUSH NUT	63	422-16-004-0006	GUIDE BAR
7	422-16-071-0002	PIN	64	1086392	PLUNGER
8	1086337	PIVOT BRACKET	65	1086393	BLOCK
9	1086348	SPLITTER W/BUSHING	66	901-02-052-2002	#10-24 X 1" FILL HD SCREW
10	905-01-010-6729	5/32" X 11/16" SPRING PIN	67	951-01-020-7849	POINTER
11	901-01-060-0629	5/16-18 X 3/8" HEX HD SCREW	68	901-02-010-7794	#10-32 X 1 1/4" ROUND HD SCREW
12	904-01-010-1620	FLAT WASHER	69	1087154	CABINET
13	1086347	BRACKET	70	34-661	TABLE INSERT, CONST OF:
14	902-01-010-1282	1/2-13 HEX NUT	71	422-02-016-0001	BUMPER
15	904-02-020-1705	1/2" LOCK WASHER	72	901-04-150-1186	#10-32 X 1/4" HEX SOC SET SCREW
16	904-01-010-1636	FLAT WASHER			
17	901-01-060-3120	1/2-13 X 1 3/4" HEX HD SCREW			
19	422-15-112-0001	SCREW			
20	422-15-055-0001	FRONT GUIDE RAIL			
21	422-02-109-0004	EXTENSION WING			
22	901-01-060-0642	3/8-16 X 1" HEX HD SCREW			
23	904-02-020-1704	3/8" LOCK WASHER			
24	422-02-004-0009	SUPPORT			
25	901-02-321-7630	#10-32 X 5/8" FILL HD SCREW			
26	904-03-020-1764	1/4" INT TOOTH WASHER			
27	902-01-120-1203	#10-32 HEX NUT			
28	901-02-010-0506	5/16-18 X 5/8" ROUND HD SCREW			
29	1087576	#8 X 1/2" PAN HD SCREW			
30	422-15-055-0002	REAR GUIDE RAIL			
31	422-02-091-0004	TABLE			
32	904-01-010-1604	5/16" FLAT WASHER			
33	901-01-060-0606	5/16-18 X 5/8" HEX HD SCREW			
34	422-03-089-0002	BRACKET			
35	901-02-050-0707	5/16-18 X 1" FILL HD SCREW			
36	904-01-010-1604	5/16" FLAT WASHER			
37	902-01-010-1300	5/16-18 HEX NUT			
38	422-02-050-0001	TILT SCALE			
39	424-01-014-0002	SWITCH BRACKET			
*	422-15-343-0002	RIP FENCE COMPLETE, CONST OF:			
40	422-02-411-0001	KNOB ASSY			
41	904-01-010-1638	FLAT WASHER			
42	904-01-010-1603	1/4" FLAT WASHER			
43	1087534	KNOB			
44	422-15-074-0001	PLUG			
45	422-02-084-0004	FRONT CLAMP BLOCK			
46	422-01-027-0003	CLAMP PLATE			
47	951-01-010-7802	POINTER			
48	901-02-010-0558	#08-32 X 1/4" ROUND HD SCREW			
49	904-01-010-1604	5/16" FLAT WASHER			
50	901-01-060-0605	5/16-18 X 1/2" HEX HD SCREW			
51	422-02-343-0009	FENCE			
52	904-01-010-1603	1/4" FLAT WASHER			
53	901-02-010-0525	#10-24 X 1/2" ROUND HD SCREW			
54	422-02-327-0001	CLAMP ASSY			
55	422-02-108-0005	ROD			

ITEMS LISTED BELOW ARE NOT ILLUSTRATED

QTY	PART NUMBER	DESCRIPTION
	50-316	STEEL STAND, CONST OF:
1	436-06-115-0001	SHELF
2	426-02-103-0002	FLANGE
2	436-06-031-0004	COVER
4	1087576	#8 X 1/2" PAN HD SCREW
4	902-03-000-2954	#06-32 TINNEMAN NUT
20	901-11-020-0834	5/16-18 X 3/4" CARRIAGE HD SCREW
20	904-01-010-1605	3/8" FLAT WASHER
20	904-02-010-1703	LOCKWASHER
20	902-01-010-1300	5/16-18 HEX NUT
4	400-06-048-0001	FOOT
4	901-02-120-7504	1/4-20 X 5/8" TRUSS HD SCREW
4	902-01-120-1034	1/4-20 HEX NUT
4	904-01-010-1614	FLAT WASHER
4	904-02-020-1702	1/4" LOCK WASHER

* NOT SHOWN ASSEMBLED



REPLACEMENT PARTS

REF NO	PART NUMBER	DESCRIPTION	REF NO	PART NUMBER	DESCRIPTION
73	422-02-375-0002	POINTER, INCL:	110	902-01-200-9847	SPECIAL NUT
74	901-04-150-0208	1/4-20 X 1/4" HEX SOC SET SCREW	111	41-013	ARBOR PULLEY - 5/8" BORE, INCL:
75	426-03-388-0001	SET COLLAR ASSY, INCL:	112	901-04-150-0206	5/16-18 X 5/16" HEX SOC SET SCREW
76	901-04-150-0208	1/4-20 X 1/4" HEX SOC SET SCREW	113	422-19-095-0002	REAR TRUNNION
77	1087598	TILT SHAFT ASSY, INCL:	114	422-02-014-0010	REAR TRUNNION BRACKET
78	905-01-010-2711	1/8" X 5/8" SPRING PIN	115	904-10-031-3810	WASHER
79	904-07-010-5554	3/8" FIBER WASHER	116	901-01-060-0649	5/16-18 X 1" HEX HD SCREW
80	905-01-010-2711	1/8" X 5/8" SPRING PIN	*	422-02-314-0005	MOTOR BRACKET ASSY, INCL:
81	1087233	FRONT TRUNNION BRACKET W/BUSHING	117	422-02-014-0012	MOTOR BRACKET
82	901-01-060-0649	5/16-18 X 1" HEX HD SCREW	118	901-04-141-9152	1/4-20 X 5/16" HEX SOC SET SCREW
83	904-10-031-3810	WASHER	119	422-03-108-0005	MOTOR PLATE ROD
84	902-01-200-9846	.639-20 HEX NUT	120	422-02-089-0005	MOTOR PLATE
85	422-02-088-0001	STOP BLOCK	121	901-01-060-0649	5/16-18 X 1" HEX HD SCREW
86	901-01-060-0612	1/4-20 X 5/8" HEX HD SCREW	122	904-01-010-1604	5/16" FLAT WASHER
87	904-01-010-1603	1/4" FLAT WASHER	123	904-03-030-1656	5/16" EXT TOOTH WASHER
88	901-04-190-0238	1/4-20 X 3/4" HEX SOC SET SCREW	124	902-01-010-1300	5/16-18 HEX NUT
89	902-01-120-1034	1/4-20 HEX NUT	125	41-023	MOTOR PULLEY - 5/8" BORE, INCL:
90	422-02-095-0007	FRONT TRUNNION	126	901-04-150-0206	5/16-18 X 5/16" HEX SOC SET SCREW
91	905-01-010-2710	3/16" X 7/8" SPRING PIN	127	49-152	V-BELT
92	901-04-150-0208	1/4-20 X 1/4" HEX SOC SET SCREW	*	34-965	BELT & PULLEY GUARD, CONST OF:
93	928-06-010-7381	SPRING	128	901-11-020-0848	1/4-20 X 1 3/4" CARRIAGE HD SCREW
94	422-02-105-0001	ECCENTRIC SLEEVE	129	904-01-010-1603	1/4" FLAT WASHER
95	1087597	ELEVATING SHAFT, INCL:	130	1088314	PLATE
96	905-01-010-2711	1/8" X 5/8" SPRING PIN	131	1088385	NUT
97	904-07-010-5554	3/8" FIBER WASHER	132	424-03-017-0003	SPACER
98	952-01-101-3267	ARBOR BRACKET SHAFT	133	1088315	COVER
99	902-01-200-9848	ARBOR NUT - LH	134	904-01-010-1620	FLAT WASHER
100	422-04-103-5001	FLANGE	135	902-04-010-1402	1/4-20 WING NUT
102	422-02-014-0017	ARBOR BRACKET	136	902-01-020-1226	5/8-18 JAM NUT
103	905-01-010-2710	3/16" X 7/8" SPRING PIN	137	1087585	ROD
104	422-03-303-0007	ARBOR W/FLANGE	138	1087708	WRENCH
105	1086894	BALL BEARING	139	422-03-138-0002	KNOB
106	1087857	SPACER	140	1085837	HANDWHEEL
107	927-03-010-2662	KEY	141	904-07-020-5556	FIBER WASHER
108	928-06-020-7382	LOAD SPRING			
109	902-07-020-7176	BEARING CLOSURE NUT	*	NOT SHOWN ASSEMBLED	

STANDARD SAFETY EQUIPMENT

In order to promote tool safety, Delta International Machinery Corp. strictly enforces the policy of repairing or replacing any damaged or missing standard safety equipment on machines presented to Delta Authorized Service Center for service/repairs. Any product which is presented to a Delta Authorized Service Center for repairs which contains missing or damaged standard safety equipment will have that equipment repaired or replaced and the customer will be charged for any such service/repairs. Customers can avoid such charges only if the missing safety component is supplied to the service center at the time of repair.

This parts list is provided to aid in obtaining service parts. Copies of the instruction and maintenance literature can be obtained through the Delta Technical Publications Department or through your local service outlet.