



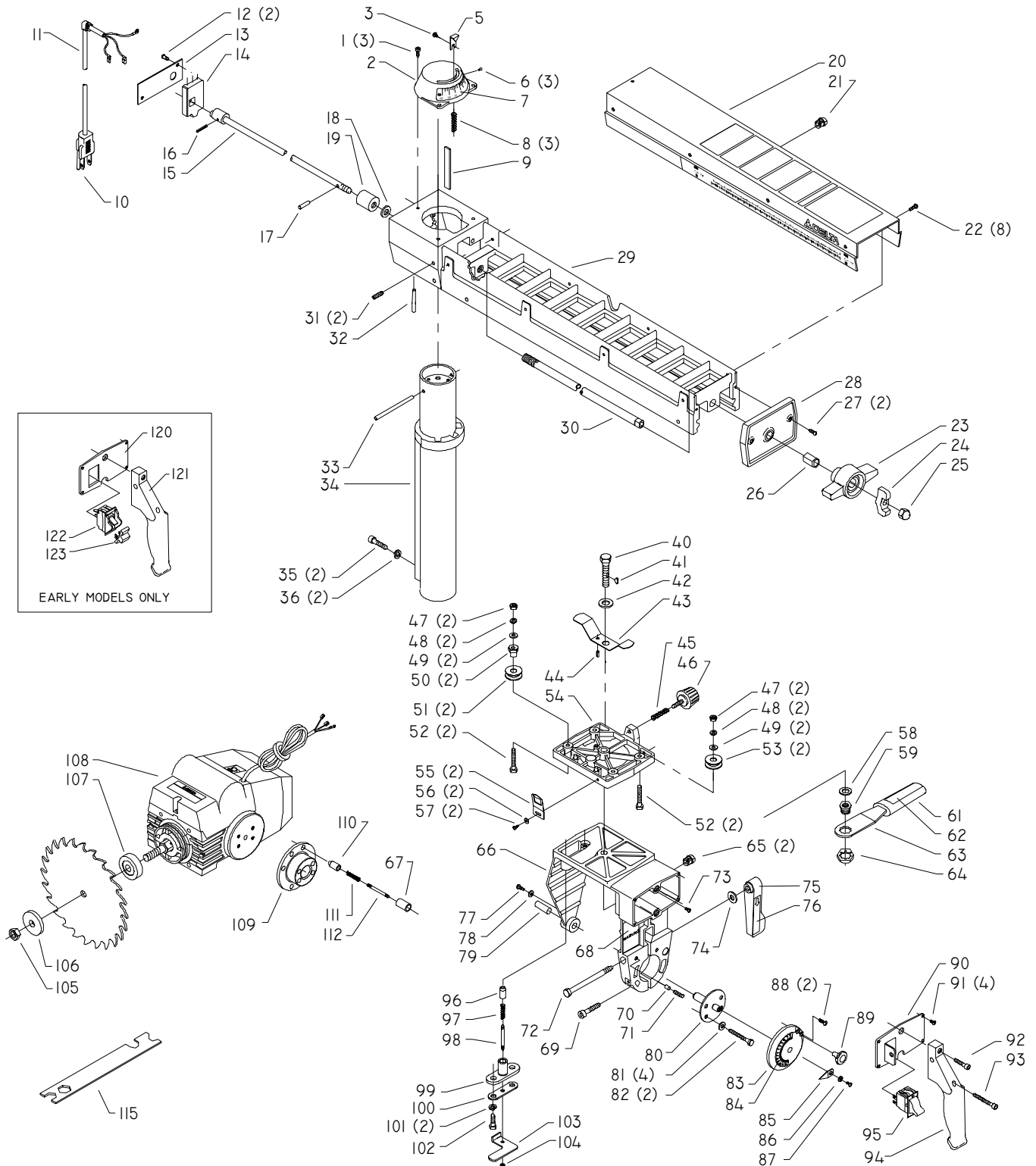
# 33-990 & 33-990C 10" RADIAL ARM SAW

(For Units W/Serial No 92F00001 & Higher)

# RAS-2G-1

PART NO. 424-12-651-0025

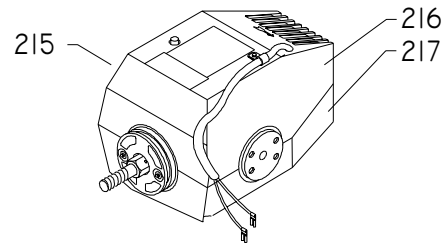
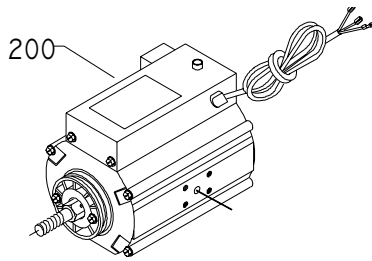
Revised: 8/19/03



# REPLACEMENT PARTS

Ref.			Ref.		
<u>No.</u>	<u>Part No.</u>	<u>Description</u>	<u>No.</u>	<u>Part No.</u>	<u>Description</u>
1	901-02-453-1123	#10-32 X 1/2" PAN HD SCREW	65	438-01-004-0062	HEYCO BUSHING 5/8"
2	424-12-132-0006	MITER CAP	66	424-12-102-0002	YOKE, INCL:
3	901-03-012-2144	#10-32 X 1/4" HEX SOC HD SCREW	67	424-12-017-0002	BUSHING
5	424-12-075-0005	POINTER	68	424-12-072-0021	WARNING LABEL
6	901-06-450-2250	#04 X 3/16" DRIVE SCREW	69	901-03-010-0779	5/16-18 X 1 1/2" HX SOC HD SCW (CMO)
7	424-12-132-0007	MITER SCALE	70	424-12-074-0002	NYLON DRAG PLUG (IMO)
8	424-12-122-0001	SPRING	71	904-01-150-9440	1/4-20 X 1/2" HEX SOC SET SCW (IMO)
9	424-12-052-0002	GIB	72	424-12-079-0003	LOCK SCREW
10	438-01-302-0384	CORD	73	901-03-012-2144	#10-32 X 1/4" HEX SOC HD SCREW
11	438-01-004-0075	STRAIN RELIEF	74	904-01-010-1605	3/8" FLAT WASHER
12	901-02-453-1123	#10-32 X 1/2" PAN HD SCREW	75	424-12-327-0005	CLAMP HANDLE, INCL:
13	424-12-072-0003	PLATE	76	424-12-752-0017	LABEL
14	424-12-088-0002	STOP	77	901-05-163-1126	#08-32 X 5/16" PAN HD SCREW
15	424-12-408-0001	ROD ASSY, INCL:	78	904-01-010-1602	3/16" FLAT WASHER
16	905-01-010-2733	5/32" X 7/8" SPRING PIN	79	424-12-071-0002	PIN
17	905-01-010-2733	5/32" X 7/8" SPRING PIN	80	424-12-371-0001	TRUNNION PIN ASSY
18	904-01-010-1638	FLAT WASHER	81	904-02-010-1703	5/16" LOCK WASHER
19	424-12-027-0001	CLAMP	82	901-01-060-0613	5/16-18 X 1 3/4" HEX HD SCREW
20	424-12-031-0013	SHROUD	83	424-12-331-0009	COVER ASSEMBLY, INCL:
21	438-01-004-0063	HEYCO BUSHINGS	84	424-12-132-0005	BEVEL SCALE
22	901-02-453-1123	#10-32 X 1/2" PAN HD SCREW	85	424-12-075-0004	BEVEL POINTER
23	424-12-068-0003	KNOB	86	904-01-010-1602	3/16" FLAT WASHER
24	424-12-067-0005	LEVER	87	901-05-163-1126	#08-32 X 5/16" PAN HD SCREW
25	902-03-033-1183	ACORN NUT	88	901-02-443-1195	#10-32 X 3/4" PAN HD SCREW
26	424-12-001-0007	ADAPTER	89	424-12-060-0002	BEVEL INDEX KNOB
27	901-02-453-1123	#10-32 X 1/2" PAN HD SCREW	90	424-12-072-0023	PLATE
28	424-12-020-0001	END CAP	91	901-05-163-1126	#08-32 X 5/16" PAN HD SCREW
29	424-12-128-0005	TRACK ARM	92	901-03-010-3345	1/4-20 X 1" HEX SOC HD SCREW
30	424-12-027-0004	CLAMP	93	901-03-013-1026	1/4-20 X 1 3/4" HEX SOC HD SCREW
31	901-04-293-1395	5/16-18 X 3/4" HEX SOC SET SCREW	94	424-12-067-0006	HANDLE
32	905-01-010-2712	1/4" X 1 1/4" SPRING PIN	95	438-01-317-0127	SWITCH (CMO)
33	424-12-071-0001	PIN	96	424-12-071-0006	INDEX PIN
34	424-12-330-0006	COLUMN ASSY	97	424-12-122-0006	INDEX SPRING
35	901-03-010-0770	5/16-18 X 1 1/4" HEX SOC HD SCREW	98	424-12-111-0005	RIP REL EASE STUD
36	904-02-010-1703	5/16" LOCK WASHER	99	424-12-012-0001	BODY
40	424-12-079-0014	PIVOT BOLT, 1/2-28	100	424-12-072-0011	INDEX PLATE
41	927-01-010-2607	WOODRUFF KEY	101	904-02-010-1703	5/16" LOCK WASHER
42	904-01-010-1636	FLAT WASHER	102	901-01-060-0649	5/16-18 X 1" HEX HD SCREW
43	424-12-088-0003	STOP	103	424-12-067-0004	INDEX RELEASE
44	905-01-011-9301	3/16" X 3/8" SPRING PIN	104	902-01-120-1203	#10-32 HEX NUT
45	424-12-122-0004	SPRING	105	424-12-079-0007	ARBOR NUT
46	424-12-327-0002	KNOB ASSY	106	424-01-103-0001	ARBOR COLLAR
47	902-01-010-1300	5/16-18 HEX NUT	107	424-12-103-0002	FLANGE
48	904-02-010-1703	5/16" LOCK WASHER	108	424-02-131-0014	MOTOR ASSY, CONST OF: (CMO)
49	904-01-010-1620	FLAT WASHER	**	438-01-029-0024	CAPACITOR
50	424-12-042-0001	ECCENTRIC	**	438-01-029-0025	CAPACITOR
51	424-12-080-0002	BEARING	**	438-01-008-0075	COVER
52	901-01-060-0609	5/16-18 X 1 1/2" HEX HD SCREW	**	438-01-008-0076	MOTOR HOUSING
53	n 424-12-080-0004	BEARING/BUSHING	**	438-01-017-0214	OVERLOAD
54	424-12-057-0003	ROLLER HEAD	**	438-01-017-0215	SWITCH MODULE
55	424-12-075-0001	POINTER	**	438-02-033-0016	BRAKE ASSY
56	904-01-010-1602	3/16" FLAT WASHER	109	424-12-095-0001	TRUNNION
57	901-05-163-1126	#08-32 X 5/16" PAN HD SCREW	110	424-12-071-0006	INDEX PIN
58	904-01-031-5734	FLAT WASHER	111	424-12-122-0006	INDEX SPRING
59	424-12-079-0015	NUT, 1/2-28	112	424-12-111-0002	INDEX STUD
61	424-12-405-0001	GRIP, INCL:	115	424-12-101-0001	WRENCH
62	424-12-752-0016	WARNING LABEL	120	424-12-072-0002	PLATE (EMO)
63	424-12-067-0001	LOCK LEVER	121	n 424-12-067-0006	HANDLE (EMO)
64	424-12-079-0008	3/4-16 PAL NUT	122	438-01-017-0141	SWITCH, INCL: (EMO)
			123	400-06-068-0002	SWITCH KEY (EMO)

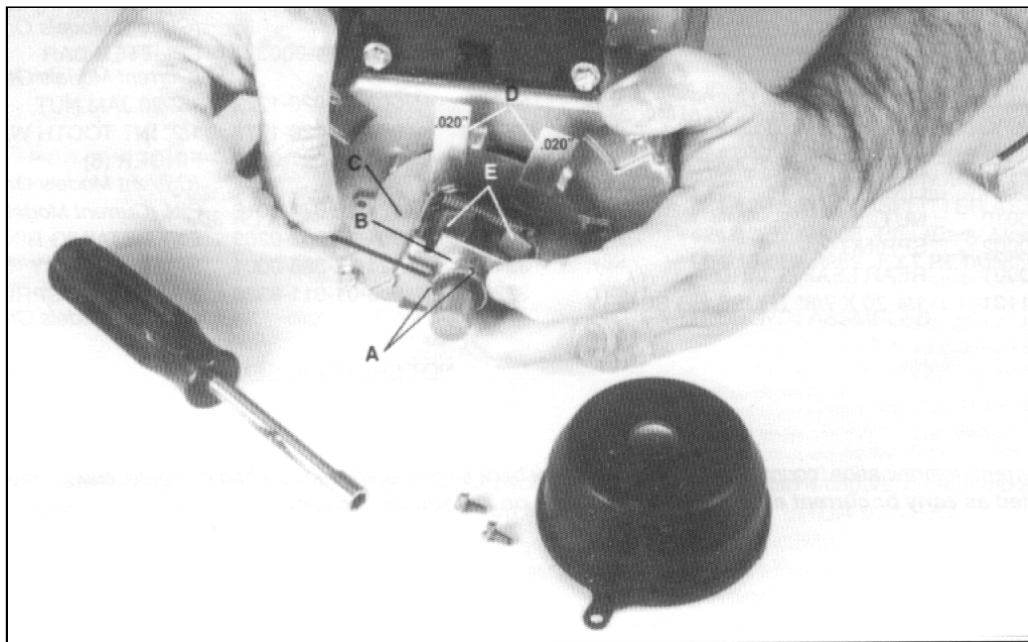
\* NOT SHOWN ASSEMBLED  
 \*\* NOT SHOWN



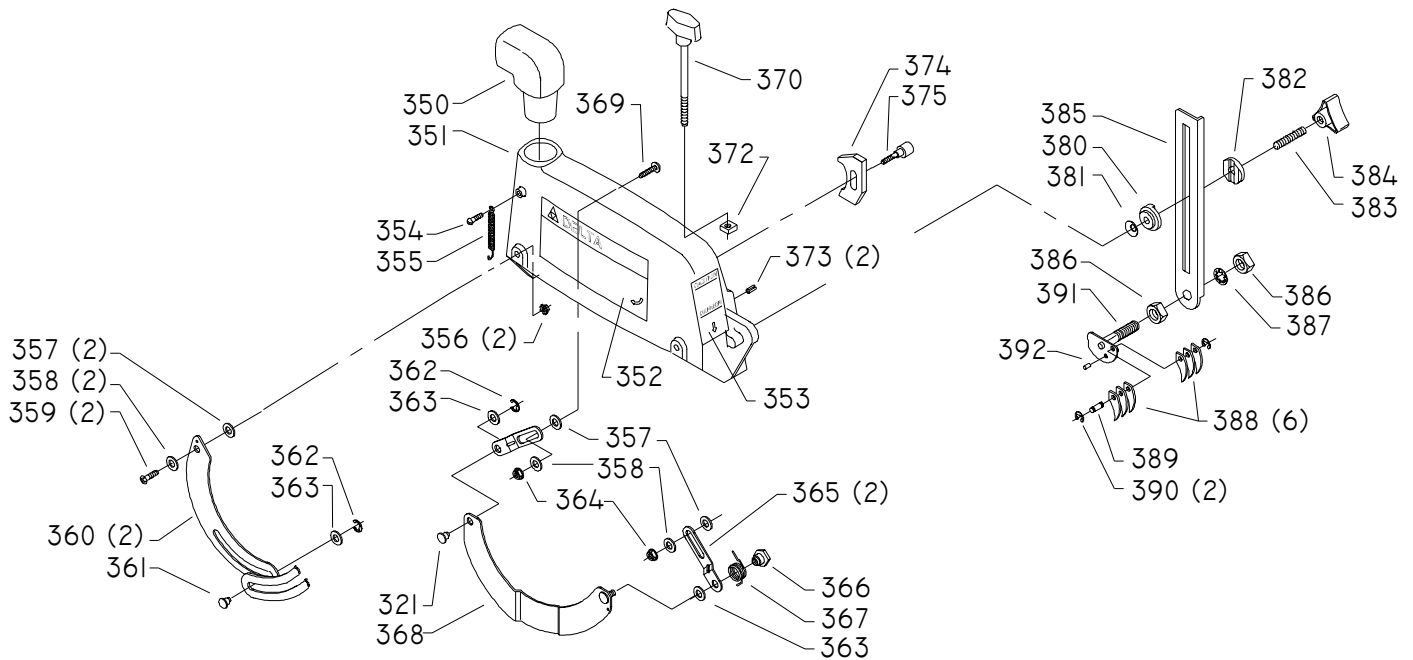
Ref. No.	Part No.	Description	Ref. No.	Part No.	Description
200	424-02-131-0008	MARATHON MOTOR, INCL: (IMO)	215	n 424-02-131-0008	EMERSON MOTOR, INCL: (EMO)
**	1345843	START CAPACITOR	**	438-01-017-0135	OVERLOAD
**	1345844	RUN CAPACITOR	**	438-01-017-0205	SWITCH
**	1345846	BRAKE ASSY (NOTE A)	**	438-01-028-0001	BRAKE/FAN ASSY
**	1345847	OVERLOAD	**	438-01-029-0006	CAPACITOR
**	1345845	START SWITCH MODULE	216	1345354	TOP MOTOR HOUSING
**	424-02-031-0040	BRAKE COVER	217	1345353	BOTTOM MOTOR HOUSING
**	NOT SHOWN		**	NOT SHOWN	

**SERVICE NOTE A:**

1. Disconnect the machine from the power source.
2. Remove two screws securing plastic brake mechanism cover. Remove cover.
3. Using 5/64" hex wrench, loosen two (2) set screws (A) securing mechanical brake mechanism (B).
4. Slide brake mechanism off shaft. Inspect phenolic shoe. Replace brake mechanism if shoe is damaged or excessively worn.
5. Clean brake shoe and brake disc (C) to remove any dust and oil build up.
6. Replace disc and brake mechanism onto shaft, placing two (2) .020" shims (D) between disc and brake shoe. See photo below for proper ship placement.
7. Push brake mechanism toward disc until the flyweight (E) expand and firm resistance is felt. Carefully hold brake mechanism in this position while securely tightening the two (2) set screws loosened in Step 3 above.
8. Remove the two(3) shims and replace the plastic cover taking care to center the brake disc in the shoulder around the plastic cover outer circumference.
9. Test run the motor to insure brake is not dragging during operation.



# REPLACEMENT PARTS



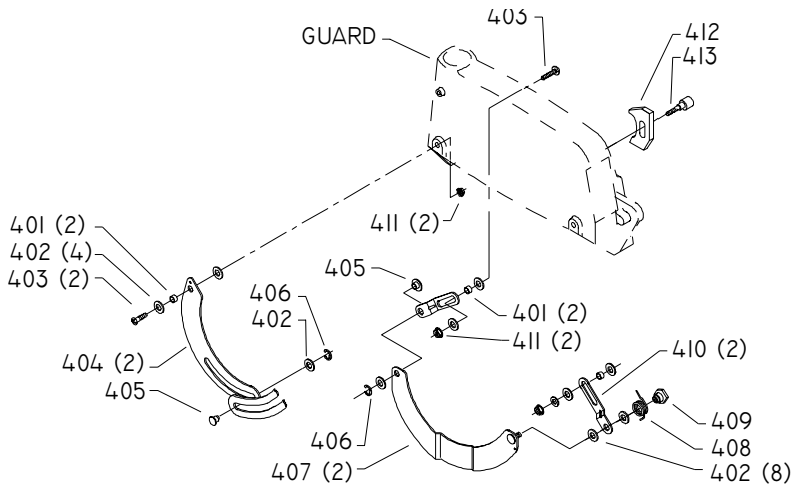
Ref. No.	Part No.	Description	Ref. No.	Part No.	Description
*	424-12-354-0005	GUARD ASSY, CONST OF:	369	901-02-403-1131	1/4-20 X 7/8" TRUSS HD SCREW
350	424-08-001-0001	DUST SPOUT	370	432-09-106-0004	KNOB ASSY
351	n 424-12-354-0011	GUARD, INCL:	372	902-02-040-1303	5/16-18 SQUARE NUT
352	424-12-072-0018	NAMEPLATE	373	905-01-011-9301	3/16" X 3/8" SPRING PIN
353	424-12-072-0014	WARNING LABEL	374	424-12-027-0014	CLAMP CAM
354	901-05-183-1142	#10-32 X 5/8" PAN HD SCREW	375	424-12-112-0006	SHOLDER SCREW
355	424-12-122-0003	SPRING	380	424-12-060-0004	HOLDER (CMO, NOTE B)
356	902-01-293-1240	1/4-20 KEPS NUT	381	904-03-063-1134	3/8" SPRING WASHER
357	424-12-104-0003	FLANGED SPACER (CMO)	382	424-12-027-0006	CLAMP
358	904-07-010-5571	FIBER WASHER	383	901-06-693-1132	STUD
359	901-02-403-1131	1/4-20 X 7/8" TRUSS HD SCREW	384	424-12-027-0010	KNOB
360	424-12-054-0002	FRONT LEAF GUARD	*	424-12-304-0002	SPLITTER BAR ASSY, CONST OF:
361	424-12-071-0004	PIN	385	424-12-004-0003	SPLITTER BAR, (CMO, NOTE B)
362	904-15-062-0269	EXT RET RING	386	902-01-020-1227	1/2-20 JAM NUT
363	n 904-01-031-7712	FLAT WASHER (CMO)	387	904-03-020-1773	1/2" INT TOOTH WASHER
364	902-01-293-1240	1/4-20 KEPS NUT (CMO)	388	424-04-047-0002	ANTI-KICK FINGER (CMO, NOTE B)
365	424-12-135-0001	LINK	389	424-12-071-0010	PIN (CMO)
366	424-12-079-0010	NUT	390	904-15-062-0269	EXT RET RING
367	424-12-122-0002	SPRING	391	424-12-386-0001	SPLITTER ASSY
368	424-12-354-0001	REAR LEAF GUARD	392	905-01-011-9326	3/32" X 11/16" PIN (CMO, NOTE B)

\* NOT SHOWN ASSEMBLED

## SERVICE NOTE:

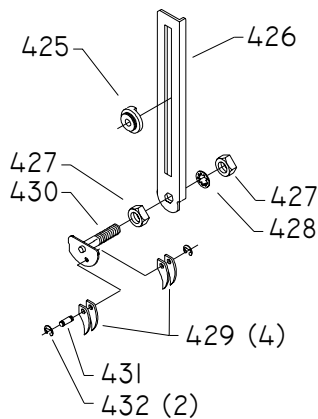
B – For early/current determination, count the number of anti-kick back fingers. Early models had 4 fingers, current models have 6 fingers.

Parts denoted as early or current are not interchangeable on an individual basis.



<u>Ref. No.</u>	<u>Part No.</u>	<u>Description</u>
401	424-12-104-0001	SPACER (EMO)
402	904-07-010-5571	FIBER WASHER
403	901-02-403-1131	1/4-20 X 7/8" TRUSS HD SCREW
404	424-12-054-0002	FRONT LEAF GUARD
405	424-12-071-0004	PIN
406	904-15-062-0269	EXT RET RING
407	424-12-354-0001	REAR LEAF GUARD
408	424-12-122-0002	SPRING
409	424-12-079-0010	NUT
410	424-12-135-0001	LINK
411	902-01-293-1240	1/4-20 KEPS NUT
412	424-12-027-0014	CLAMP CAM

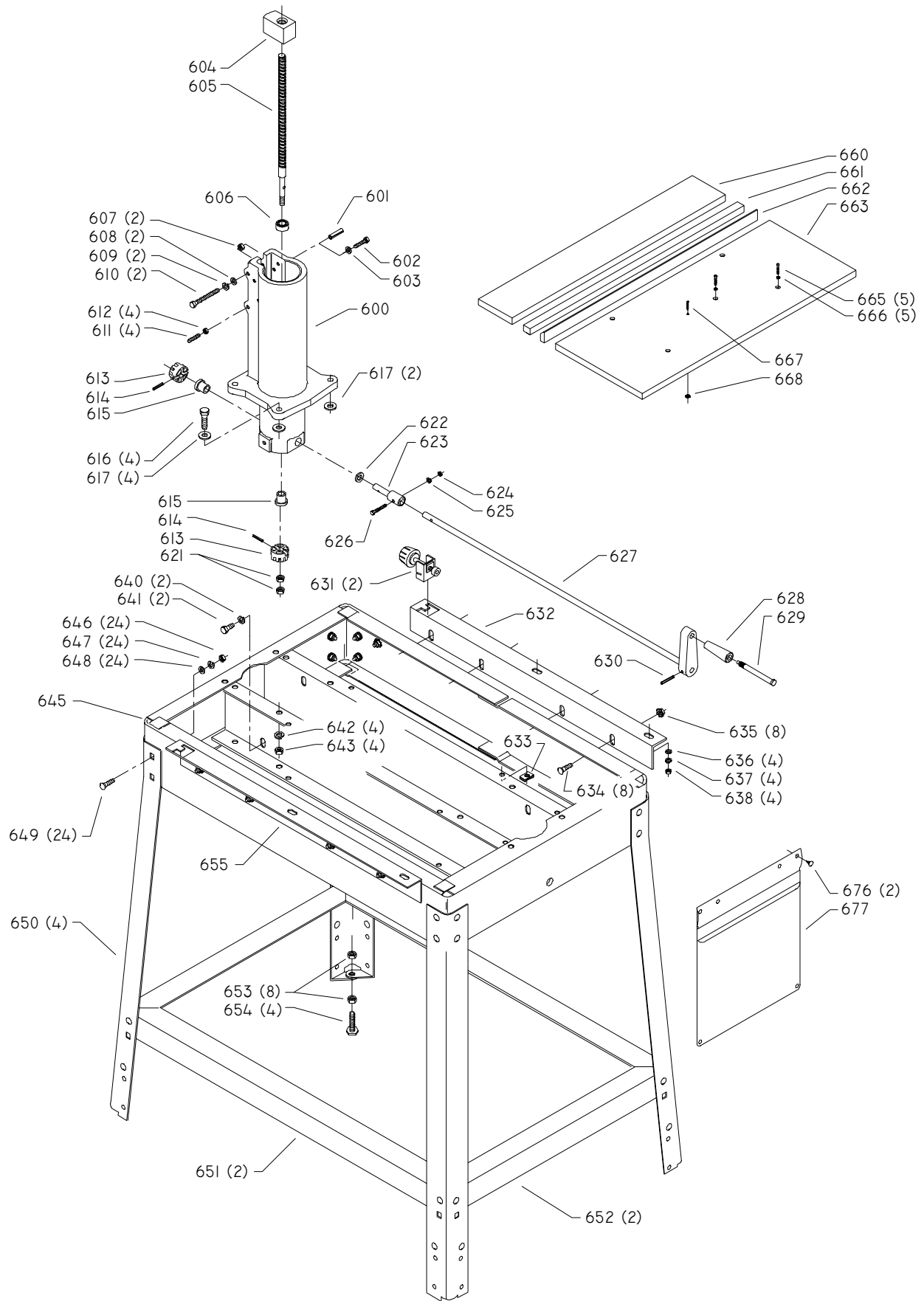
**GUARD ASSEMBLY**  
**(Early Models Only, With Serial Nos Lower Than 94E00000)**



<u>Ref. No.</u>	<u>Part No.</u>	<u>Description</u>
413	424-12-112-0006	SHOLDER SCREW
*	424-12-304-0001	SPLITTER ASSY, INCL: (EMO, NOTE B)
425	424-12-060-0001	HOLDER (EMO, NOTE B)
426	424-12-004-0001	SPLITTER BAR (EMO, NOTE B)
427	902-01-020-1227	1/2-20 JAM NUT
428	904-03-020-1773	1/2" INT TOOTH WASHER
429	424-04-047-0002	ANTI-KICK FINGER (EMO, NOTE B)
430	424-12-386-0001	SPLITTER ASSY
431	424-12-071-0005	PIN (EMO)
432	904-15-062-0269	EXT RET RING
*		NOT SHOWN ASSEMBLED

**SERVICE NOTE:**

B – For early/current determination, count the number of anti-kick back fingers. Early models had 4 fingers, current models have 6 fingers.  
**Parts denoted as early or current are not interchangeable on an individual basis.**



# REPLACEMENT PARTS

<u>Ref. No.</u>	<u>Part No.</u>	<u>Description</u>	<u>Ref. No.</u>	<u>Part No.</u>	<u>Description</u>
600	424-12-005-0005	COLUMN BASE, INCL:	645	424-12-305-0001	BASE ASSY
601	905-01-010-5077	5/16" X 1 1/4" SPRING PIN (CMO)	*	33-972	STAND ASSY, CONST OF:
602	901-02-010-0523	5/16-18 X 1 1/2" ROUND HD SCREW (EM	646	902-01-010-1300	5/16-18 HEX NUT
603	904-02-010-1703	5/16" LOCK WASHER (EMO)	647	904-02-010-1703	5/16" LOCK WASHER
604	424-12-079-0011	ELEVATING NUT	648	904-01-010-1605	3/8" FLAT WASHER
605	424-12-112-0001	ELEVATING SCREW	649	901-11-020-0834	5/16-18 X 3/4" CARRIAGE HD SCREW
606	920-52-010-5323	THRUST BEARING	650	424-12-066-0001	LEG
607	902-01-010-1300	5/16-18 HEX NUT	651	424-12-089-0005	TIE BAR
608	904-01-010-1620	FLAT WASHER	652	424-12-089-0004	TIE BAR
609	904-02-010-1703	5/16" LOCK WASHER	653	902-01-020-5433	3/8-16 JAM NUT
610	424-12-112-0007	SPECIAL SCREW	654	901-09-131-5295	LEVELING SCREW
611	424-12-112-0009	BRASS TIP SET SCREW	655	424-12-089-0001	SUPPORT
612	902-01-120-1034	1/4-20 HEX NUT	*	424-12-311-0005	TABLE BOARD SET, CONST OF:
613	424-02-051-0008	GEAR-10 TEETH	660	424-12-011-0002	BOARD
614	905-01-010-6714	5/32" X 1 1/4" SPRING PIN	661	424-12-011-0001	BOARD
615	424-02-017-0003	BUSHING	662	424-12-043-0001	FENCE
616	901-01-060-0648	3/8-16 X 1 1/4" HEX HD SCREW	663	424-12-011-0003	FRONT BOARD
617	904-01-010-1606	7/16" FLAT WASHER	665	901-02-010-0513	1/4-20 X 1 1/2" ROUND HD SCREW
621	902-01-020-5433	3/8-16 JAM NUT	666	904-01-010-1614	FLAT WASHER
622	904-07-010-5567	1/2" FIBER WASHER	667	901-04-120-0185	1/4-20 X 1 1/4" HEX SOC SET SCREW
623	424-12-001-0001	ADAPTER	668	424-12-079-0009	TEE NUT
624	902-01-120-1203	#10-32 HEX NUT	676	400-06-079-0001	RETAINER
625	904-02-010-1726	LOCK WASHER	677	400-06-603-0003	ENVELOPE
626	901-02-050-0732	#10-32 X 1 1/4" FILL HD SCREW	*		NOT SHOWN ASSEMBLED
627	424-12-408-0002	ELEVATOR CRANK ASSY, INCL:			
628	1086395	HANDLE			
629	422-04-071-5002	PIN			
630	905-01-010-2708	3/16" X 1 1/4" SPRING PIN			
631	424-12-314-0001	CLAMP ASSY			
632	424-12-089-0002	SUPPORT			
633	902-03-013-1136	1/4-20 TINNERMAN NUT			
634	901-11-020-0834	5/16-18 X 3/4" CARRIAGE HD SCREW			
635	902-01-503-1514	5/16-18 FLANGE NUT			
636	904-01-010-1614	FLAT WASHER			
637	904-02-020-1702	1/4" LOCK WASHER			
638	902-01-120-1034	1/4-20 HEX NUT			
640	904-02-010-1703	5/16" LOCK WASHER			
641	901-01-060-0606	5/16-18 X 5/8" HEX HD SCREW			
642	904-02-020-1704	3/8" LOCK WASHER			
643	902-01-010-5900	3/8-16 JAM NUT			

---

## STANDARD SAFETY EQUIPMENT

In order to promote tool safety, Delta Machinery strictly enforces the policy of repairing or replacing any damaged or missing standard safety equipment on machines presented to Delta Authorized Service Centers for service/repairs. Any product that is presented to a Delta Authorized Service Centers for repairs which contains missing or damaged standard safety equipment will have that equipment repaired or replaced and the customer will be charged for any such service/repairs. Customers can avoid such charges only if the missing safety component is supplied to the service center at the time of repair.

**This parts list is provided to aid in obtaining service parts. Copies of the instruction and maintenance literature can be obtained through the Delta Technical Publications Department or through your service outlet.**