

# REPLACEMENT PARTS

Ref.			Ref.		
<u>No.</u>	<u>Part No.</u>	<u>Description</u>	<u>No.</u>	<u>Part No.</u>	<u>Description</u>
1	901-02-010-7562	10-32 X 5/16" ROUND HD SCREW	41	438-01-017-0085	LVC SWITCH
2	424-02-031-0030	COVER	42	424-02-368-0002	LOCK W/KEYS
3	424-02-112-0013	SPECIAL SCREW	43	424-02-031-0041	COVER PLATE, NOTE E
4	424-02-088-0005	STOP	44	424-02-031-0041	COVER PLATE, NOTE D
5	901-04-161-9252	SCREW	44	901-02-010-0558	#08-32 X 1/4" ROUND HD SCREW
*	424-02-330-0006	INDEX COLUMN, INCL.:	45	901-02-010-0567	06-32 X 1/4" ROUND HD SCREW
6	424-02-030-0004	COLUMN	46	905-02-011-8145	3/8 X 1 1/2" GROOVE PIN
7	424-02-071-0009	PIN	47	424-02-330-0008	COLUMN ASSY, INCL.:
8	928-01-251-8872	SPRING	48	424-02-128-0002	KEY
9	400-06-371-0001	BUSHING W/PIN ( NOTE A)	49	901-03-010-0771	5/16-18 X 7/8" HEX SOC HD SCREW
10	905-01-010-2729	3/16" X 1/2" SPRING PIN	50	424-02-035-0001	RAISING NUT
11	424-02-004-0014	BAR	51	424-02-031-0044	REAR COVER
12	424-02-105-0002	SLEEVE	52	902-04-010-1402	1/4-20 WING NUT
13	905-01-010-2720	1/4" X 1" SPRING PIN	53	901-03-040-8016	5/16-18 X 3/4" BUTTON HD SCREW
14	424-04-031-0017	COVER, NOTE E	54	904-02-010-1703	5/16" LOCK WASHER
	424-04-031-0018	COVER, NOTE D	55	901-02-010-0554	08-32 X 1/2" ROUND HD SCREW
15	901-02-010-0558	#08-32 X 1/4" ROUND HD SCREW	56	424-02-088-0006	STOP
16	901-01-060-0648	3/8-16 X 1 1/4" HEX HD SCREW	57	901-01-060-0614	1/4-20 X 1 1/4" HEX HD SCREW
17	904-02-020-1704	3/8" LOCK WASHER	58	904-02-020-1705	1/2" LOCK WASHER
18	424-02-089-0020	SUPPORT	59	901-03-010-0765	1/2-13 X 1 1/2" HEX SOC HD SCREW
19	438-01-004-0030	CLAMP (2) FOR 33-890	60	424-02-108-0017	GUIDE ROD
19A	438-01-004-0030	CLAMP (1) FOR 33-891, 892, 893)	61	902-01-013-1859	5/16-18 HEX NUT
20	438-01-004-0092	CLAMP - DOUBLE (1) FOR 33-891, 892, 893	62	424-02-108-0012	ROD
21	901-03-010-3318	10-32 X 3/8" HEX SOC HD SCREW	63	424-02-132-0003	RIP SCALE
23	901-01-060-0622	1/4-20 X 2" HEX HD SCREW	64	901-02-010-0558	#08-32 X 1/4" ROUND HD SCREW
24	931-01-021-4099	KNOB, ALL EXCEPT 33-895X	65	424-02-055-0017	GUIDE, NOTE E
	424-02-138-0003	KNOB, 33-895X		424-02-055-0015	GUIDE, NOTE D
25	901-07-261-3250	STUD	66	424-02-331-0029	COVER, INCL.; NOTE E
26	424-02-107-0001	HUB		424-02-331-0013	COVER, INCL.; NOTE D
27	424-02-027-0010	CLAMP	67	910-01-071-0132	HEYCO BUSHING
28	928-01-601-8873	SPRING	68	931-01-042-0455	KNOB, ALL EXCEPT 33-895X
30	n 901-06-143-1757	10-24 X 3/8" PAN HD GROUND SCREW		424-02-138-0006	KNOB, 33-895X
31	438-01-004-0007	CORD CONNECTOR	69	901-03-040-8016	5/16-18 X 3/4" BUTTON HD SCREW
32	961-01-010-7499	PLUG	70	904-02-010-1703	5/16" LOCK WASHER
33	901-01-101-9846	5/16-18 X 4 1/2" HEX HD SCREW	71	424-02-752-0079	WARNING LABEL
34	424-02-027-0010	CLAMP	72	424-00-752-0002	WARNING LABEL
35	904-07-011-8401	7/8" FIBER WASHER	73	424-02-631-0007	HARDWARE PACK , ALL EXCEPT 33-895X
36	901-03-010-0762	5/16-18 X 5/8" HEX SOC HD SCREW		424-02-631-0008	HARDWARE PACK, 33-895X
37	904-01-010-1609	FLAT WASHER			
38	951-01-021-7019	POINTER	*		NOT SHOWN ASSEMBLED
39	438-01-011-0036	INSULATION			EMO=EARLY MODELS ONLY
40	438-01-017-0123	MANUAL SWITCH			CMO=CURRENT MODELS
					IMO= INTERMEDIATE MODELS

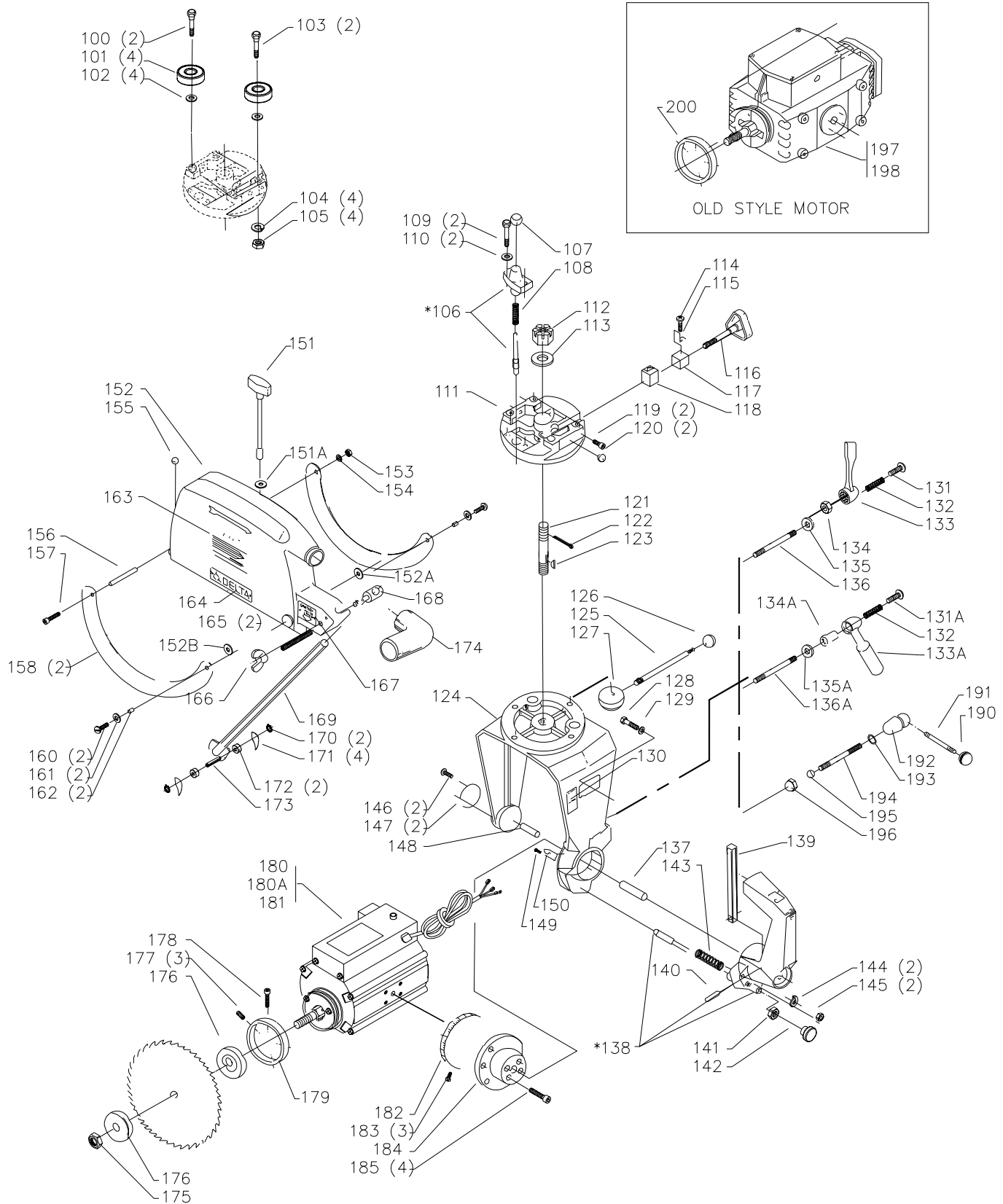
## Service Note:

A - Bushing and pin are furnished (and must be replaced) as a matched set. A small tube of #680 Loctite is provided with the set to secure the bushing in the index column.

LOCTITE® is a registered trademark of the LOCTITE CORP., Newington, CT

D - S/N'S BEGINNING WITH 01H AND BELOW

E - S/N'S BEGINNING WITH 01I AND ABOVE



\* TO MAINTAIN THE REQUIRED FIT, THE PLUNGER HOUSINGS ARE HONED AND FITTED WITH THE PLUNGER AND SUPPLIED AS AN ASSEMBLY.

# REPLACEMENT PARTS

Ref.	Part No.	Description	Ref.	Part No.	Description
100	424-02-111-0015	STUD	155	436-01-016-2001	BUMPER
101	424-02-080-0002	BEARING	156	1087837	SPACER
102	424-02-083-0001	SHIM	157	901-01-060-9596	1/4-20 X 3 1/4" HEX HD SCREW
103	424-02-111-0016	ECCENTRIC STUD	158	424-02-054-0005	LEAF
104	904-02-010-1703	5/16" LOCK WASHER	160	901-02-120-7504	1/4-20 X 5/8" TRUSS HD SCREW
105	902-01-010-1206	5/16-24 HEX NUT	161	904-01-031-7712	FLAT WASHER
106	424-02-388-0020	STOP ASSY, INCL.; NOTE E	162	424-02-104-0016	SPACER
	424-02-388-0019	STOP ASSY, INCL.; NOTE D	163	n 424037540005	NAMEPLATE - INDUSTRIAL UNITS
107	931-01-021-4099	KNOB, ALL EXCEPT 33-895X		424-02-752-0083	WARNING LABEL, NOTE E
	424-02-138-0003	KNOB, 33-895X		424-00-752-0001	WARNING LABEL, NOTE D
108	928-01-041-4123	SPRING	164	424-12-754-0012	NAMEPLATE, NOTE E
109	901-01-060-0649	5/16-18 X 1" HEX HD SCREW		406-03-137-0006	NAMEPLATE, NOTE D
110	904-01-013-1855	FLAT WASHER		424-02-752-0087	NAMEPLATE. 33-895X ONLY
111	424-02-057-0007	ROLLER HEAD		424-02-752-0085	NAMEPLATE, CMO EXCEPT 33-895X
112	902-01-161-7838	3/4-16 NUT	165	901-04-193-1297	5/16-18 X 1" HEX SOC SET SCREW
113	904-01-013-1826	WASHER	166	902-04-010-1404	3/8-16 WING NUT
114	901-02-010-0569	08-32 X 3/16" ROUND HD SCREW	167	424-02-752-0084	PLATE
115	951-01-021-7018	POINTER	168	424-02-111-0014	CLAMP
116	424-02-412-0011	CLAMP SCREW ASSY	169	424-02-408-0017	KICK BACK ROD ASSY, INCL:
117	424-02-027-0014	OUTER CLAMP	170	904-15-062-0269	EXT RET RING
118	424-02-027-0011	INNER CLAMP	171	424-04-047-0002	FINGERS
119	901-04-150-0202	1/4-20 X 1/2" HEX SOC SET SCREW	172	424-02-104-0014	SPACER
120	424-03-016-0002	BUMPER	173	424-02-071-0023	PIN
121	424-02-111-0009	STUD	174	424-02-026-0001	DUST CHUTE
122	905-05-040-2106	1/8" X 1 1/4" COTTER PIN	175	424-12-079-0007	ARBOR NUT
123	927-01-100-2606	HI-PRO KEY	176	424-02-103-0001	FLANGE
124	424-02-102-0010	YOKE (CMO NOTE B), NOTE E	177	901-04-150-0235	10-24 X 3/8" HEX SOC SET SCREW
	424-02-102-0009	YOKE (CMO NOTE B), NOTE D	178	901-04-153-1794	1/4-20 X 1" HEX SOC HD SCREW
125	424-02-112-0016	STUD	179	424-02-001-0014	COLLAR (CMO)
126	931-01-011-4091	BALL HANDLE, ALL EXCEPT 33-895X	180	424-02-131-0009	MOTOR - 2HP, 1 PH, 230V, NOTE C, INCL.; EMO
	424-02-138-0005	BALL HANDLE, 33-895X	**	1345843	START CAPACITOR
127	424-02-027-0004	CLAMP	**	1345844	RUN CAPACITOR
128	901-01-060-3124	1/4-20 X 1 1/2" HEX HD SCREW	**	1345845	START SWITCH MODULE
129	904-01-010-1614	FLAT WASHER	**	1345846	CENTRIFICAL BRAKE ASSY, NOTE C
130	424-12-752-0049	WARNING LABEL, NOTE E	**	424-02-039-0001	BRAKE DISC (SEE NOTE C)
	424-12-072-0021	WARNING LABEL, NOTE D	**	1345848	OVERLOAD
131	406-03-112-0006	SPECIAL SCREW (CMO, NOTE B)	**	424-02-031-0040	BRAKE COVER
131A	406-03-112-0003	SPECIAL SCREW (IMO NOTE B)	180A	424-02-131-0010	MOTOR - 2HP, 1PH,230V,LVC, NOTE C, INCL
132	406-03-122-0002	SPRING (I & CMO ONLY, NOTE B)	**	1345846	CENTRIFICAL BRAKE ASSY, NOTE C
133	406-03-033-0002	RATCHET HANDLE (CMO, NOTE B), ALL EXCEPT 33-895X	**	424-02-039-0001	BRAKE DISC (SEE NOTE C)
	424-02-033-0005	RATCHET HANDLE, 33-895X	**	1345843	START CAPACITOR
133A	406-03-033-0001	HANDLE (IMO NOTE B)	**	1345844	RUN CAPACITOR
134	902-01-203-1697	7/16-14 HEX NUT -LH (CMO, NOTE B)	**	1345845	START SWITCH MODULE
134A	424-02-027-0016	CLAMP (IMO NOTE B)	**	424-02-031-0040	BRAKE COVER
135	904-01-031-2925	WASHER (CMO, NOTE B)	181	424-02-131-0011	MOTOR,2HP,3PH,200-230/460V, LVC, NOTE C, EMO
135A	904-10-031-2097	WASHER (IMO NOTE B)	**	1345846	CENTRIFICAL BRAKE ASSY, NOTE C
136	424-02-111-0018	STUD (CMO, NOTE B)	**	424-02-039-0001	BRAKE DISC (SEE NOTE C)
136A	424-02-111-0017	STUD (IMO NOTE B), CF	**	424-02-031-0040	BRAKE COVER
137	424-02-071-0022	FRONT TRUNNION PIN	182	951-02-011-8295	BEVEL SCALE
*	424-02-355-0015	GUIDE ASSY, INCL.:	183	901-06-450-2252	02 X 3/16" ROUND HD SCREW
138	424-02-355-0013	GUIDE ASSY, INCL.; ALL EXCEPT 33-895X	184	424-02-095-0008	FRONT TRUNNION, NOTE E
	424-02-355-0024	GUIDE ASSY, INCL.; 33-895X		424-02-095-0006	FRONT TRUNNION, NOTE D
139	424-02-004-0015	LEVER	185	901-03-010-0770	5/16-18 X 1 1/4" HEX SOC HD SCREW
140	424-02-071-0012	PIN	190	931-01-021-4099	KNOB (EMO NOTE B)
141	902-01-200-9847	SPECIAL NUT	191	901-07-261-3250	STUD (EMO NOTE B)
142	931-01-021-4099	KNOB, ALL EXCEPT 33-895X	192	424-02-107-0002	HUB (EMO NOTE B)
	424-02-138-0003	KNOB, 33-895X	193	904-03-063-1134	3/8" SPRING WASHER (EMO, NOTE B)
143	928-01-041-5310	SPRING	194	424-02-111-0008	STUD (EMO NOTE B)
144	904-02-010-1703	5/16" LOCK WASHER	195	424-02-017-0008	BUSHING (EMO NOTE B)
145	901-03-010-0779	5/16-18 X 1 1/2" HEX SOC HD SCREW	196	902-10-010-2956	1/2-20 PAL NUT (EMO NOTE B)
146	901-02-010-0558	#08-32 X 1/4" ROUND HD SCREW	197	See Service Bulletin S	MOTOR - 1 1/2HP, 1 PH, 115/230V, INCL.; EMO
147	424-02-072-0016	TRUNION PLATE, NOTE E	**	424-02-131-0009	MOTOR - 2HP, 1 PH, 230V, INCL.; EMO
	424-01-072-0002	TRUNION PLATE, NOTE D	**	1345355	BRAKE COIL, ALL VOLT, EMO, CF
148	424-12-071-0002	PIN	**	1345356	BRAKE LINER 12" RAS, EMO, CF
149	901-02-160-3729	08-32 X 1/4" PAN HD SCREW	**	1345357	BRAKE COVER 12" RAS, EMO
150	422-34-075-0002	POINTER	**	438-01-015-0029	RELAY, EMO
151	424-02-327-0014	CLAMP ASSY, ALL EXCEPT 33-895X	**	438-01-017-0156	OVERLOAD, EMO
	424-02-327-0015	CLAMP ASSY, 33-895X	**	438-01-029-0010	CAPACITOR, EMO
151A	904-10-031-3810	FLATWASHER	198	424-02-131-0011	MOTOR - 1 1/2HP. 3 PH,230/460V, EMO
152	424-02-354-0026	BLADE GUARD ASSY, ALL EXCEPT 33-895X,	200	424-02-001-0011	COLLAR, EMERSON MTR (EMO), EMO
	424-02-354-0027	BLADE GUARD ASSY, INCL.; 33-895X	*		NOT SHOWN ASSEMBLED
152A	904-07-010-5571	FIBER WASHER	**		NOT SHOWN
152B	904-07-010-5571	FIBER WASHER			EMO=EARLY MODELS ONLY
153	902-01-120-1034	1/4-20 HEX NUT			CMO=CURRENT MODELS
154	904-02-020-1702	1/4" LOCK WASHER			IMO= INTERMEDIATE MODELS

## Service Note:

B - Early model yoke must be used with early model clamp handle configuration (Ref. 190 thru 196).

Intermediate model yoke must be used with intermediate model clamp configuration (Ref. Nos. 131A thru 136A).

Current model yoke must be used with intermediate model clamp configuration (Ref. Nos. 131 thru 136).

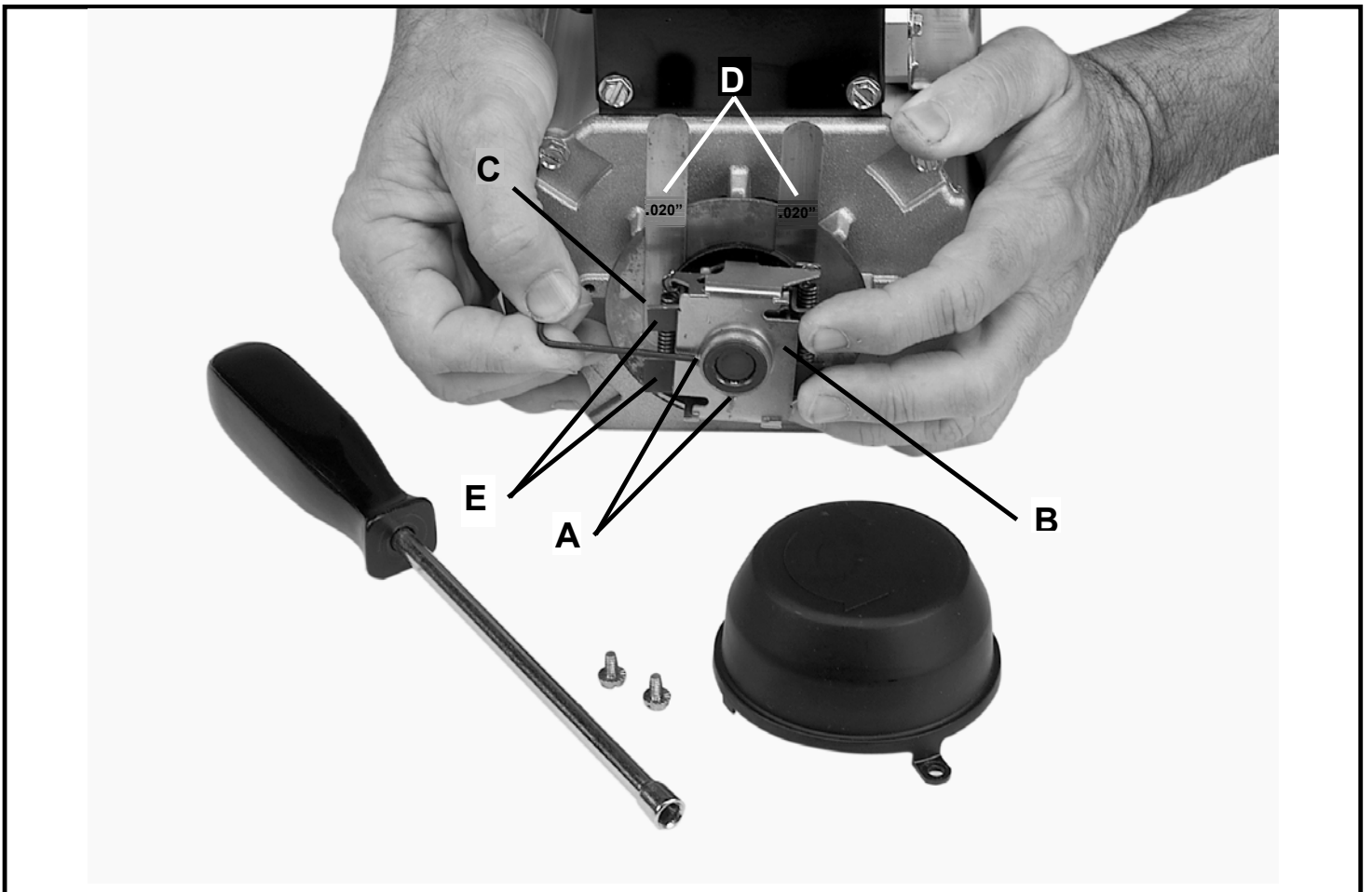
D - S/N'S BEGINNING WITH 01H AND BELOW

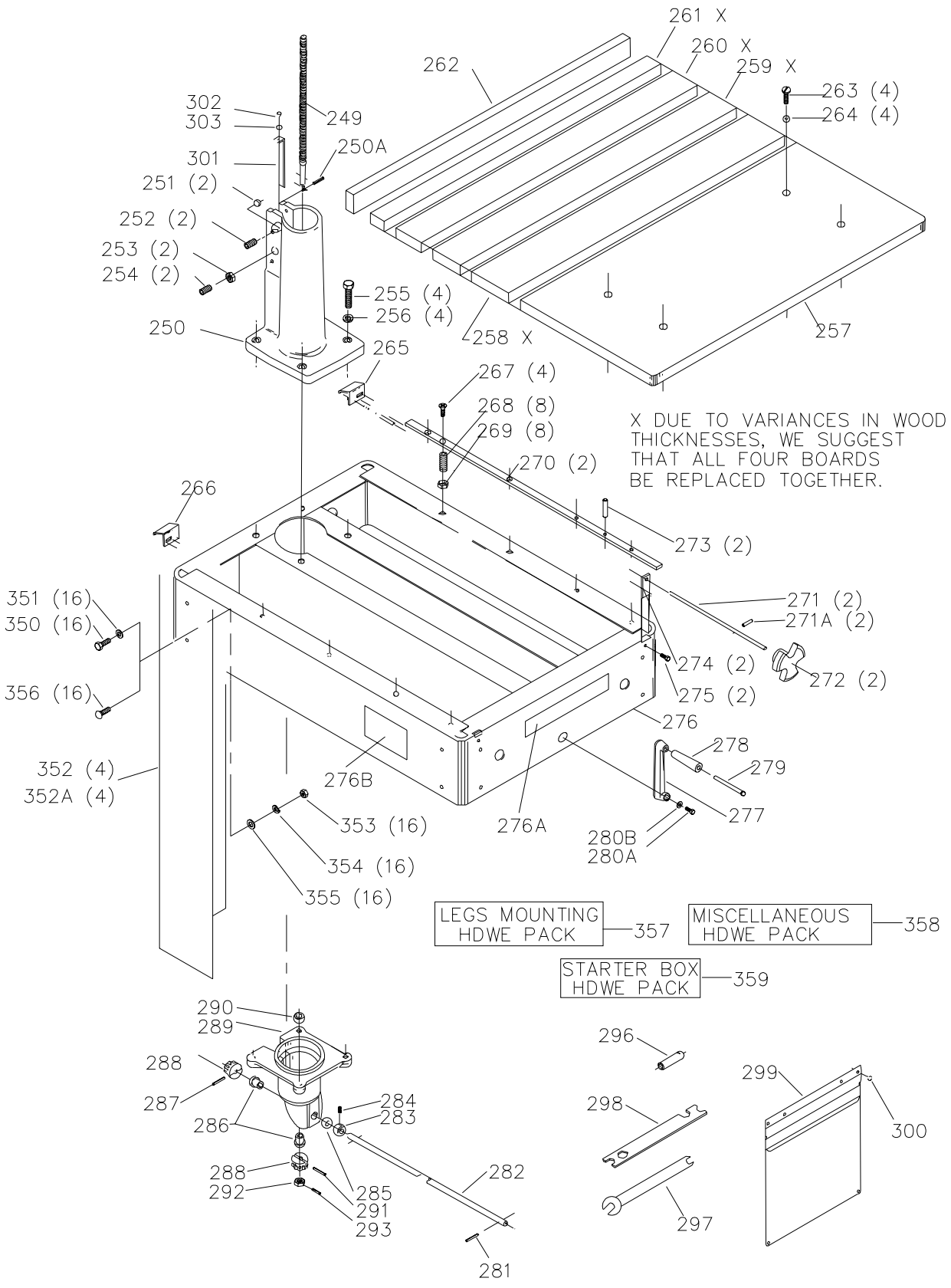
E - S/N'S BEGINNING WITH 01I AND ABOVE

## SERVICE NOTE C:

The motor on this product is equipped with an external mechanical braking device. Should the brake require adjustment due to wear or removal for motor service, proceed as follows:

1. Disconnect machine from the power source.
2. Remove two screws securing plastic brake mechanism cover. Remove cover.
3. Using 5/64" hex wrench, loosen two (2) set screws (A) securing mechanical brake mechanism (B).
4. Slide brake mechanism off shaft. Inspect phenolic shoe. Replace brake mechanism if shoe is damaged or excessively worn.
5. Clean brake shoe and brake disc (C) to remove any dust and oil build up.
6. Place disc and brake mechanism onto shaft. Place two .020" shims (D) between disc and brake shoe. See photo below for proper shim placement.
7. Push brake mechanism toward disc until the flyweights (E) expand and firm resistance is felt. Carefully hold brake mechanism in this position while securely tightening the two setscrews loosened in Step 3 above.
8. Remove the two shims and replace the plastic cover taking care to center the brake disc in the shoulder around the plastic cover outer circumference.
9. Test run motor to insure brake is not dragging during operation.





# REPLACEMENT PARTS

Ref.	No.	Part No.	Description	Ref.	No.	Part No.	Description
	249	424-02-112-0010	SCREW		282	424-02-108-0018	ROD
	250	424-02-305-0026	COLUMN BASE, INCL:		283	904-10-991-2051	COLLAR, INCL:
	250A	905-01-010-6721	1/4" X 7/8" SPRING PIN		284	901-04-150-0208	1/4-20 X 1/4" HEX SOC SET SCREW
	251	902-01-013-1859	5/16-18 HEX NUT		285	904-07-010-5567	1/2" FIBER WASHER
	252	901-02-183-1280	5/16-18 X 2" HEX HD SCREW		286	424-02-017-0003	BUSHING
	253	902-01-020-5435	5/16-18 JAM NUT		287	905-01-010-6714	5/32 X 1 1/4" SPRING PIN
	254	901-04-150-0292	5/16-18 X 1 1/4" HEX SOC SET SCREW		288	424-02-051-0008	GEAR
	255	901-01-060-0616	1/2-13 X 1 1/2" HEX HD SCREW		289	424-02-013-0005	GEAR BOX
	256	904-02-020-1705	1/2" LOCK WASHER		290	920-52-010-5323	THRUST BEARING
	**	424-02-311-0004	BOARD SET, INCL.:		291	905-01-010-6714	5/32 X 1 1/4" SPRING PIN
	257	424-02-011-0018	FRONT BOARD		292	902-01-161-7837	3/8-16 HEX NUT
	258	424-02-011-0007	BOARD		293	905-01-010-2717	3/32 X 1/2" SPRING PIN
	259	424-02-011-0008	BOARD		296	424-02-012-0006	WRENCH
	260	424-02-011-0009	BOARD		297	955-01-040-1485	WRENCH
	261	424-02-011-0010	BOARD		298	424-12-101-0001	WRENCH
	262	424-02-011-0011	FENCE		299	400-06-603-0003	ENVELOPE
	263	901-02-010-0536	1/4-20 X 1 3/4" ROUND HD SCREW		300	400-06-079-0001	RETAINER
	264	904-01-010-1614	FLAT WASHER		301	424-12-052-0001	GIB
	265	424-01-327-0005	CLAMP PAD - RH		302	901-03-010-0224	#10-32 X 1/2" HEX SOC HD SCREW
	266	424-01-327-0006	CLAMP PAD - LH		303	904-01-010-1610	FLAT WASHER
	267	901-03-030-8013	1/4-20 X 3/4" FLAT HD SCREW		350	901-01-060-0607	5/16-18 X 3/4" HEX HD SCREW (EMO)
	268	424-01-112-0001	LEVELING SCREW		351	904-01-013-1855	FLAT WASHER (EMO)
	269	902-10-010-2956	1/2-20 PAL NUT		352	424-02-366-0008	LEG ASSY, 30" LONG (EMO)
	270	424-02-004-0013	BAR		352A	424-12-366-0002	LEG ASSY, 32-1/2" LONG
	271	424-02-408-0009	ROD ASSY, INCL:		353	902-01-013-1859	5/16-18 HEX NUT, NOTE E
	271A	905-01-010-2717	3/32 X 1/2" SPRING PIN		354	902-01-010-1300	5/16-18 HEX NUT, NOTE D
	272	424-02-138-0002	KNOB, ALL EXCEPT 33-895X		354	904-03-033-1867	5/16" EXT TOOTH WASHER, NOTE E
		424-02-138-0004	KNOB, 33-895X			904-03-030-1656	5/16" EXT TOOTH WASHER, NOTE D
	273	905-01-010-2720	1/4" X 1" SPRING PIN		355	904-01-013-1855	FLAT WASHER (CMO), NOTE E
	274	424-02-089-0009	SUPPORT			904-01-010-1620	FLAT WASHER (CMO), NOTE D
	275	901-01-060-0611	1/4-20 X 1/2" HEX HD SCREW		356	901-11-023-1476	5/16-18 X 5/8" CARRIAGE HD SCREW (CMO)
	276	424-02-305-0027	BASE, CONST. OF, NOTE E		357	424-12-725-0004	LEGS MTG. HARDWARE PACK
		424-02-305-0023	BASE, NOTE D		358	424-02-628-0013	MISCELLANEOUS HARDWARE PACK
	276A	n 424037540004	NAMEPLATE - INDUSTRIAL UNITS		359	424-02-628-0009	INCL.: REFS. 69, 70, 263, 264, 280 A & B, 281
		424-02-752-0082	NAMEPLATE, ALL EXCEPT 33-895X, NOTE E		**	424-02-014-0025	STARTER BOX HARDWARE PACK
		424-02-752-0086	NAMEPLATE, 33-895X		**	901-01-060-0611	33-891, 33-892, 33-894 INCL.:
	276B	422-04-752-0185	LABEL, NOTE E		**	901-01-060-0626	BRACKET
	277	424-02-333-0008	CRANK ASSY, INCL.; ALL EXCEPT 33-895X		**	902-01-120-1034	1/4-20 X 1/2" HEX HD SCREW
		424-02-333-0010	CRANK ASSY, INCL.; 33-895X		**	904-01-010-1614	1/4-20 HEX NUT
	278	1086395	HANDLE, ALL EXCEPT 33-895X		**	904-02-020-1702	1/4" FLAT WASHER
		422-02-060-0005	HANDLE, 33-895X		**	52-704	1/4" LOCK WASHER
	279	422-04-071-5002	PIN, ALL EXCEPT 33-895X		**	NOT SHOWN	LVC STARTER BOX, 33-891, 33-892, 33-894
		422-04-071-0011	PIN, 33-895X				
	280A	901-01-060-0611	1/4-20 X 1/2" HEX HD SCREW				
	280B	904-01-010-1614	FLAT WASHER				
	281	905-04-091-7956	SHEAR PIN				

## Service Note:

NOTE D: S/N'S BEGINNING WITH 01H AND BELOW  
NOTE E: S/N'S BEGINNING WITH 01I AND ABOVE

## STANDARD SAFETY EQUIPMENT

In order to promote tool safety, Delta Machinery strictly enforces the policy of repairing or replacing any damaged or missing standard safety equipment on machines presented to Delta Authorized Service Centers for service/repairs. Any product that is presented to a Delta Authorized Service Center for repair with damaged or missing standard safety equipment will have that equipment repaired or replaced and the customer will be charged for any such service/repairs. Customers can avoid such charges only if the missing safety component is supplied to the service center at the time of repair.

This parts list is provided to aid in obtaining service parts. Copies of the instruction and maintenance literature can be obtained through the Delta Technical Publications Department, your service outlet, or by visiting the Delta Website @ [www.deltamachinery.com](http://www.deltamachinery.com).