

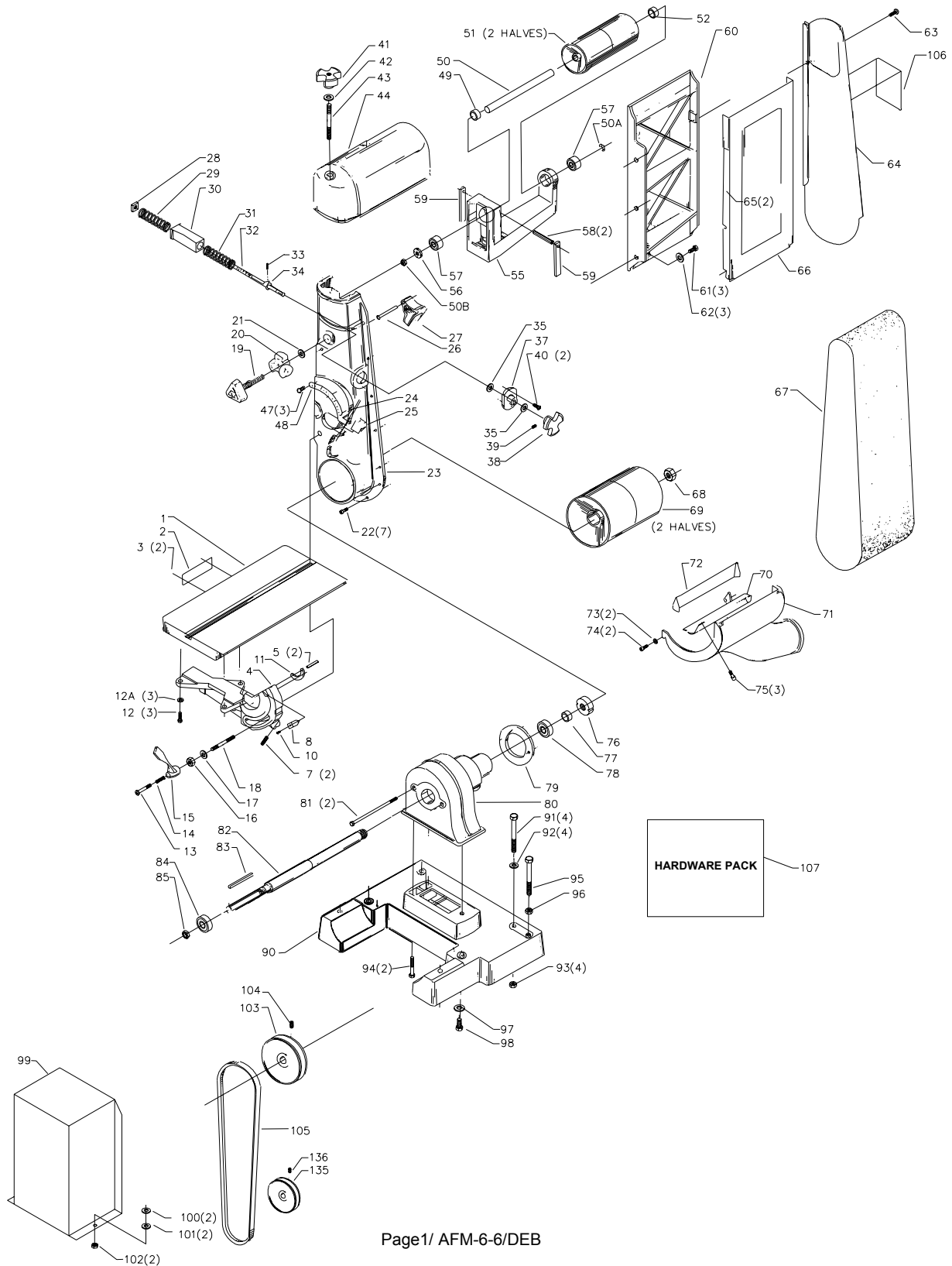


31-552 6" ABRASIVE BELT FINISHING MACHINE

AFM-6-6

PART NO. 406-03-651-0018

Date: 2/20/04



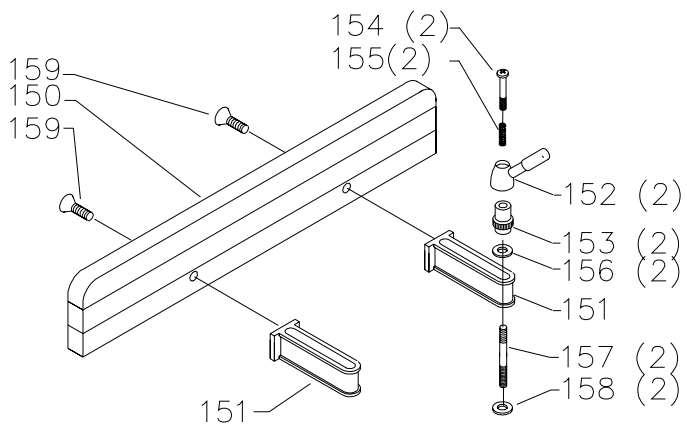
REPLACEMENT PARTS

Ref.	No.	Part No.	Description	Ref.	No.	Part No.	Description
*		31-401	TABLE ASSY., CONST OF:	63		901-04-340-7605	SCREW
1		406-03-091-0007	TILT TABLE	64		406-03-054-0022	GUARD
2		406-03-137-0006	NAMEPLATE	65		406-03-004-0001	CLAMP BAR
3		901-06-450-2250	04 X 3/16" DRIVE SCREW	66		406-03-054-0020	GUARD PAN
4		406-03-395-0003	TRUNNION ASSY, CONST OF:	67		SEE CATALOG	ABRASIVE BELT
5		1231522	PIN	68		902-01-201-2560	1.00-20 HEX NUT
7		901-04-193-1064	1/4-28 X 1" HEX SOC SET SCREW	69		406-01-362-0006	DRIVE DRUM
8		1087397	POINTER	70		406-03-036-0007	DEFLECTOR
10		901-02-010-0561	10-32 X 3/8" ROUND HD SCREW	71		406-03-054-0023	GUARD
11		418-03-055-0001	KEY	72		406-03-036-0006	DUST PLATE
12		901-01-060-0608	5/16-18 X 7/8" HEX HD SCREW	73		904-02-010-1726	LOCK WASHER
12A		904-01-010-1620	FLAT WASHER	74		901-03-010-8072	06-32 X 3/4" HEX SOC HD SCREW
13		406-03-112-0006	SPECIAL SCREW	75		901-03-010-3318	10-32 X 3/8" HEX SOC HD SCREW
14		406-03-122-0002	SPRING	76		406-03-079-0001	SPANNER NUT
15		406-03-033-0002	HANDLE	77		406-03-104-0003	SPACERS
16		902-01-201-2579	7/16-14 HEX NUT	78		920-04-020-5360	BEARING
17		904-01-013-1884	7/16" FLAT WASHER	79		406-03-027-0001	CLAMP RING
18		406-03-111-0002	STUD	80		406-03-012-0001	HOUSING
19		406-03-412-0007	ADJUSTING SCREW	81		901-01-060-0639	7/16-14 X 3 1/2" HEX HD SCREW
20		406-03-138-0003	KNOB	82		406-03-106-0002	SHAFT
21		904-07-010-5567	1/2" FIBER WASHER	83		927-03-010-2650	1 3/8" KEY
22		901-03-010-0229	1/4-20 X 1/2" HEX SOC HD SCREW	84		920-04-020-5348	BEARING
23		406-03-049-0004	BRACKET	85		902-07-030-7171	.802-28 BEARING NUT
24		905-01-010-2705	1 7/8" SPRING PIN	90		406-03-005-0004	BASE
25		418-03-088-0001	STOP BLOCK	91		901-01-063-1883	3/8-16 X 3" HEX HD SCREW
26		406-03-071-0002	PIN	92		904-01-013-1884	7/16" FLAT WASHER
27		406-03-067-0001	LEVER	93		902-01-010-5900	3/8-16 JAM NUT
*		1086998	SCREW ASSY, CONST OF:	94		901-03-011-9984	3/8-24 X 1 1/2" HEX SOC HD SCREW
28		902-02-010-1304	7/16-14 SQUARE NUT	95		901-04-020-8670	STOP PIN
29		406-03-122-0001	SPRING	96		902-01-201-2579	7/16-14 HEX NUT
30		406-03-031-0001	SLEEVE	97		904-01-013-1884	7/16" FLAT WASHER
31		928-01-021-3381	SPRING	98		901-01-060-0688	3/8-24 X 3/4" HEX HD SCREW
32		1086990	SCREW, INCL:	99		406-03-354-0022	BELT GUARD
33		905-01-010-2704	1/8" X 3/4" SPRING PIN	100		901-03-040-8015	1/4-20 X 1/2" BUTTON HD SCREW
34		904-10-031-3804	COLLAR	101		904-01-010-1614	FLAT WASHER
35		904-07-011-5711	7/16" FIBER WASHER	102		902-01-120-1034	1/4-20 HEX NUT
37		406-03-020-0001	FLANGE	103		41-064	PULLEY - 4" OD, 3/4" BORE PULLEY, CONE
38		406-03-438-0001	CRANK, INCL:	104		901-04-150-0206	5/16-18 X 5/16" HEX SOC SET SCREW
39		901-04-190-0225	5/16-18 X 1/4" HEX SOC SET SCREW	105		49-035	V-BELT - 55-3/8" OC
40		919783	SCREW	106		406-00-752-0002	WARNING DECAL
41		406-03-138-0004	KNOB	107		406-03-628-0009	HARDWARE PKG. (BELT GUARD)
42		904-01-031-2925	FLAT WASHER				
43		420-01-111-0003	STUD				
44		406-03-054-0021	GUARD				
47		901-06-450-2250	04 X 3/16" DRIVE SCREW	135		41-033	PULLEY - 2-3/4" OD, 5/8" BORE, INCL:
48		951-02-010-7822	SCALE	136		901-04-150-0206	5/16-18 X 5/16" HEX SOC SET SCREW
*	n	406-01-362-0006	IDLER ASSY., CONST OF:	*	n	52-616	1PH 1.5HP PB SWITCH
49		406-03-104-0002	SPACER				
50		406-03-108-0001	DRUM SHAFT, INCL:				
50A		902-01-281-7295	1/4-20 HEX NUT				
50B		902-01-020-1227	1/2-20 JAM NUT				
51		406-03-362-0003	IDLER DRUM (PAIR)				
52		406-03-104-0002	SPACER				
55		406-03-014-0001	IDLER DRUM BRACKET, INCL:				
56		902-07-020-7176	NUT				
57		920-04-010-7273	BEARING				
58		905-01-010-5085	5/16" X 3/4" SPRING PIN				
59		406-03-071-0001	KEY				
60		406-03-091-0006	PLATEN				
61		901-01-060-0640	3/8-16 X 3/4" HEX HD SCREW				
62		904-01-010-1605	3/8" FLAT WASHER				

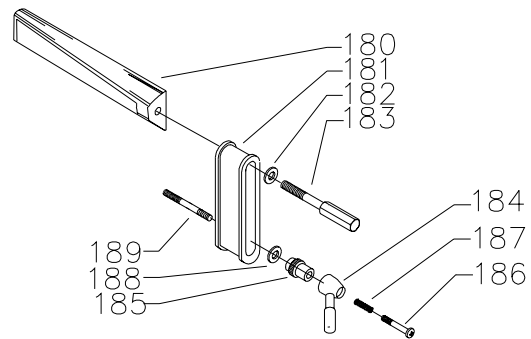
ACCESSORIES: (Optional)

41-033 PULLEY - 2-3/4" OD, 5/8" BORE, INCL:
 901-04-150-0206 5/16-18 X 5/16" HEX SOC SET SCREW
 52-616 1PH 1.5HP PB SWITCH

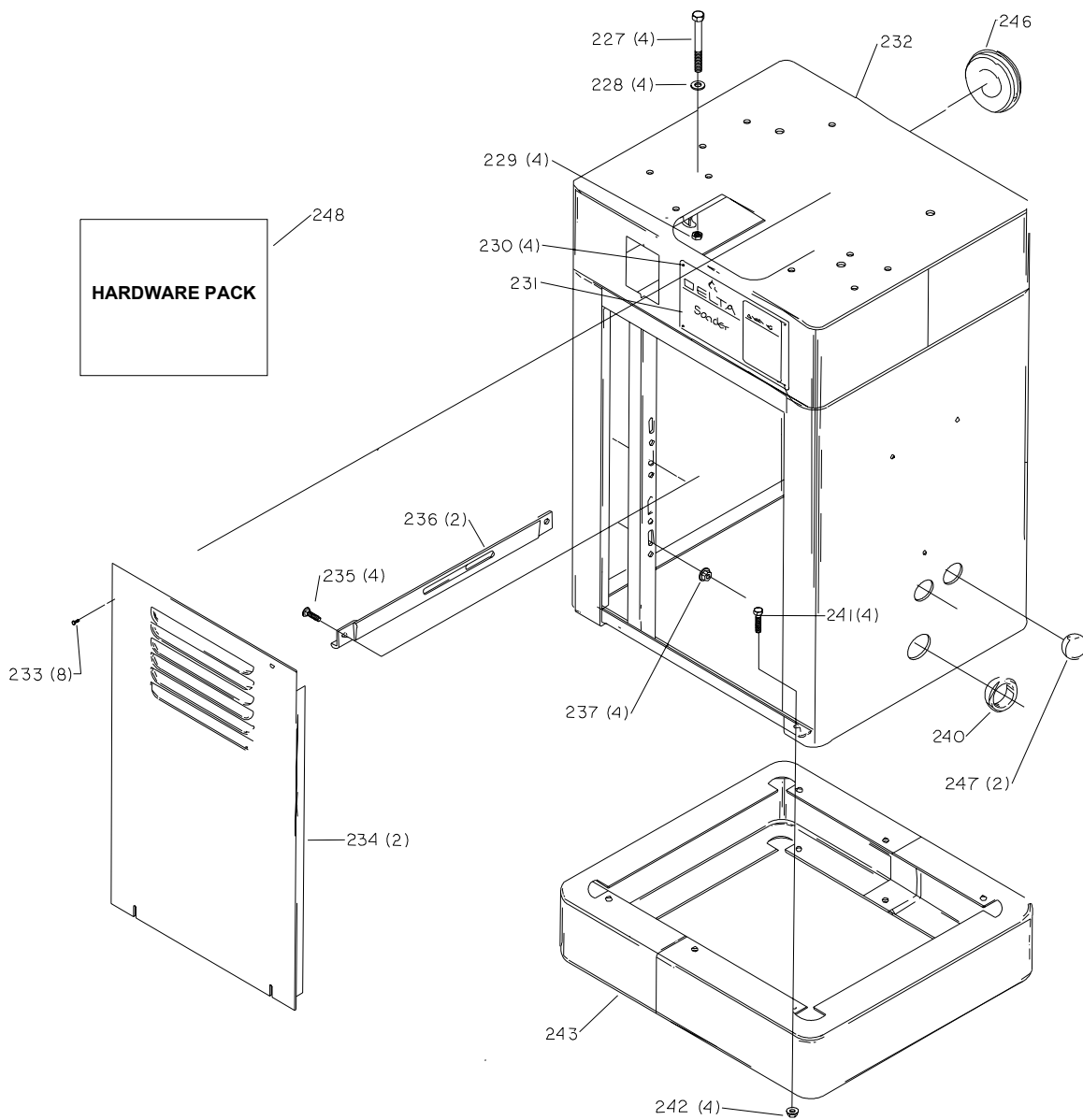
* NOT SHOWN ASSEMBLED



31-014



31-403



REPLACEMENT PARTS

Ref.	Part No.	Description
*	31-014	WOODEN FENCE, CONST OF:
150	406-03-043-0001	WOODEN FENCE
151	406-03-014-0015	BRACKET
152	406-03-033-0001	HANDLE
153	902-04-030-1408	7/16-14 SERRATED NUT
154	406-03-112-0003	SPECIAL SCREW
155	406-03-122-0002	SPRING
156	904-10-031-2097	WASHER
157	420-01-111-0003	STUD
158	904-10-031-3803	WASHER
159	901-02-030-0409	5/16-18 X 1 1/4" FLAT HD SCREW
*	31-403	BACKSTOP, CONST OF:
180	406-03-088-0002	BACK STOP
181	406-03-014-0014	LINK
182	904-10-031-2097	WASHER
183	901-09-070-6124	7/16-14 X 3.06 HEX HD SCREW
184	406-03-033-0001	HANDLE
185	432-01-027-0004	SERRATED NUT
186	406-03-112-0003	SPECIAL SCREW
187	406-03-122-0002	SPRING
188	904-10-031-2097	WASHER
189	420-01-111-0003	STUD
*	50-115	STAND, CONST OF:
227	901-01-063-1883	3/8-16 X 3" HEX HD SCREW
228	904-01-013-1884	7/16" FLAT WASHER
229	902-01-010-5900	3/8-16 JAM NUT
230	1087794	RIVET
231	406-03-137-0005	NAMEPLATE
232	436-01-318-0023	CABINET
233	901-06-443-1806	10-24 X 1/2" HEX HD SCREW
234	436-01-123-0008	SIDE PANEL
235	901-11-020-0834	5/16-18 X 3/4" CARRIAGE HD SCREW
236	436-01-004-0022	MOTOR BRACKET
237	902-01-503-1514	5/16-18 FLANGE NUT
240	438-01-011-0020	INSULATOR
241	901-01-060-0607	5/16-18 X 3/4" HEX HD SCREW
242	902-01-503-1514	5/16-18 FLANGE NUT
243	436-01-305-0001	SUB BASE
246	436-01-074-0002	HOLE PLUG
247	438-01-011-0065	PLUG
248	406-03-725-0002	HARDWARE PKG (STAND)
		ITEMS LISTED BELOW USED TO MOUNT MOTOR TO MOTOR BRACKET
*	901-11-020-0834	5/16-18 X 3/4" CARRIAGE HD SCREW
*	902-01-010-1300	5/16-18 HEX NUT
*	904-01-010-1605	3/8" FLAT WASHER
*	904-02-010-1703	5/16" LOCK WASHER
*		NOT SHOWN ASSEMBLED
**		NOT SHOWN

STANDARD SAFETY EQUIPMENT

In order to promote tool safety, Delta Machinery strictly enforces the policy of repairing or replacing any damaged or missing standard safety equipment on machines presented to Delta Authorized Service Centers for service/repairs. Any product that is presented to a Delta Authorized Service Centers for repairs which contains missing or damaged standard safety equipment will have that equipment repaired or replaced and the customer will be charged for any such service/repairs. Customers can avoid such charges only if the missing safety component is supplied to the service center at the time of repair.

This parts list is provided to aid in obtaining service parts. Copies of the instruction and maintenance literature can be obtained through the Delta Technical Publications Department or through your service outlet.