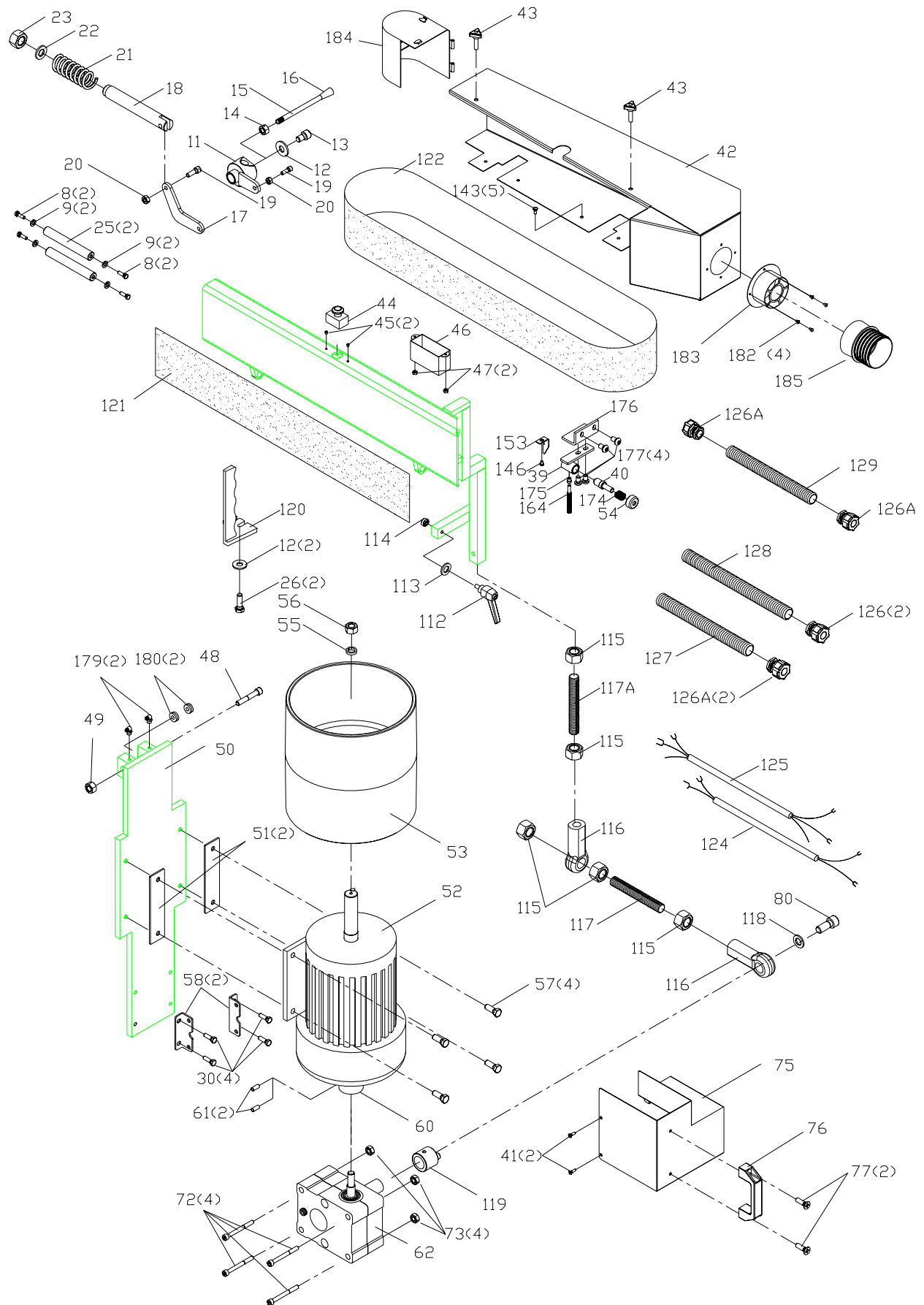


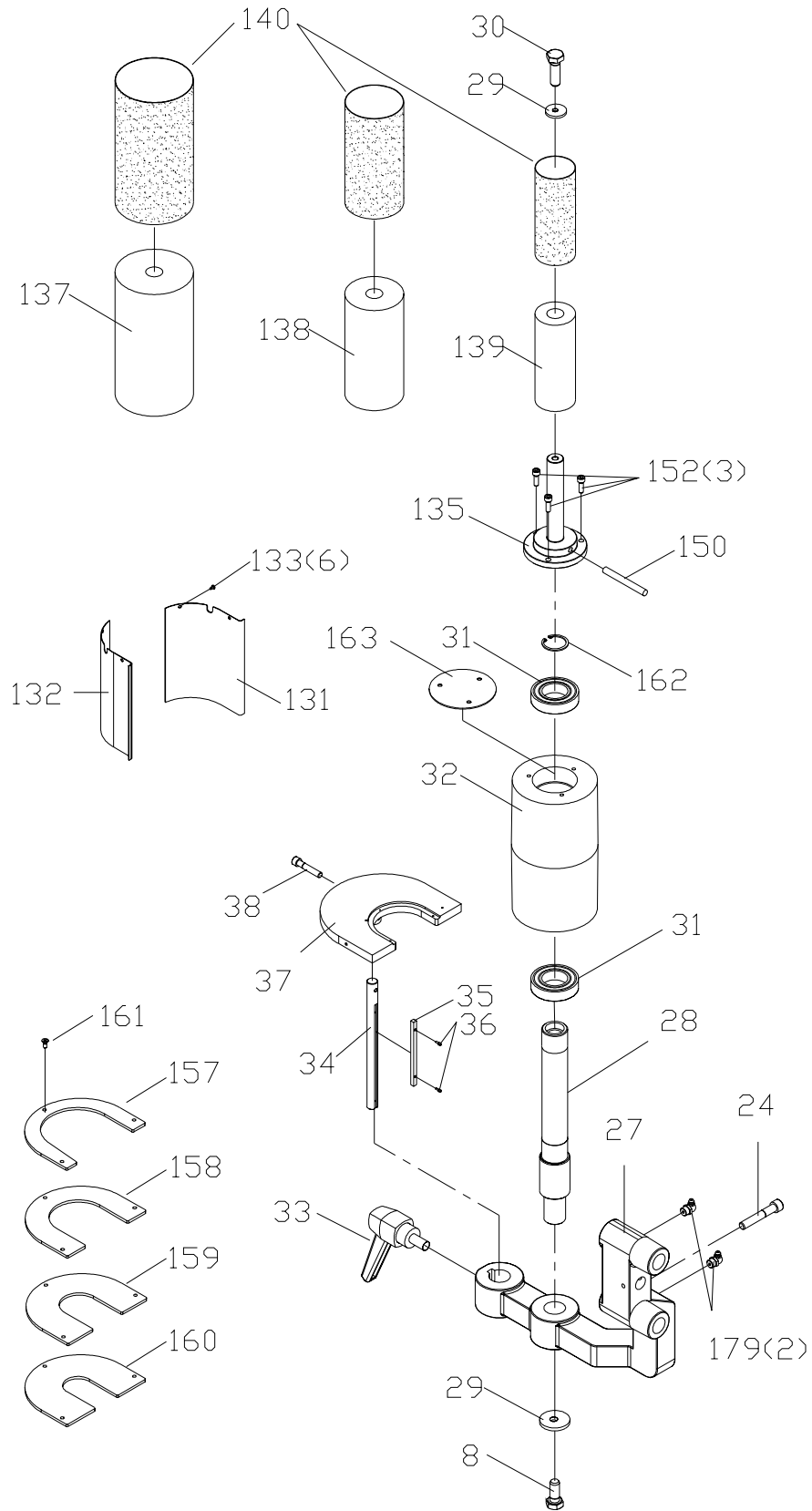
REPLACEMENT PARTS

Ref.			Ref.		
<u>No.</u>	<u>Part No.</u>	<u>Description</u>	<u>No.</u>	<u>Part No.</u>	<u>Description</u>
1C	905252	HINGE	130	910933	CORD
1D	905251	HINGE	144	909621	FENCE
1E	905250	LATCH	145	910934	COVER
1F	1342455	M5 X 10MM PAN HD SCREW	146	910935	3/16" X 3/8" ROUND HD SCREW
3	1350430	3/8" X 3/4" HEX HD SCREW	146A	910936	3/16" X 3/4" ROUND HD SCREW
4	1350291	3/8" HEX NUT	147	910937	WHEEL
5	910851	SWIVEL BRACKET	151	909640	10MM X 12MM OPEN END WRENCH
6	910852	SWIVEL SPINDLE	155	428-07-101-0002	M6 HEX WRENCH
7	902-01-010-9104	3/4" HEX NUT	156	432-07-101-0004	M5 HEX WRENCH
8	1350307	5/16" X 1" HEX HD SCREW	165	1246014	M6 X 16 HEX. HD. SCREW
9	1343390	5/16" LOCK WASHER	166	901-04-150-0217	5/16" X 1/2" SET. SCREW
12	904-01-031-5655	5/16" FLAT WASHER	167	910943	CAP
20	1350284	1/4" NUT	168	910944	BEARING
29	910845	FLAT WASHER 5/16" X 1-3/8"	169	910945	SPINDLE
30	901-01-060-0605	5/16" X 1/2" HEX HD SCREW	170	910946	CAP
36	1340243	M4 X 10MM SOC. BOLT	172	910846	PULLER KIT
43A	910869	5/16" X 1" KNOB	181	910951	SPINDLE CAP
61	901-04-150-9402	5/16" X 3/4" SET SCREW	300	909619	HARDWARE BOX
78	910893	ADJUSTING PLATE	301	909620	HARDWARE BAG
79	910894	GEAR BOX			
80	901-03-010-0757	5/ 16" X 3/4" SOC SCREW			
81	910895	.25 X 30 RING			
82	910896	GEAR			
83	910897	SOCKET			
84	910898	SPINDLE			
85	910899	BEARING			
86	910900	WORM			
87	910901	ROD COVER			
88	910902	BEARING			
89	910903	SPINDLE PACKING			
90	901-03-010-0229	1/4" X 1/2" SOC. SCREW			
91	910904	LOCK RING			
92	910905	HANDLE BAR			
93	910906	3/8" KNOB			
94	910907	PLATE			
95	910908	KNOB			
96	910909	SPRING			
97	910910	SPINDLE			
98	910911	SPINDLE			
99	901-03-010-0750	5/16" X 1" SOC. SCREW			
101	910912	TABLE			
102	1344591	MITER GAGE			
103	910913	SPINDLE			
104	n 694147	BEARING			
105	902-09-040-5913	3/ 8" NUT			
106	901-03-010-3371	5/16" X 1 3/4" SOC HD SCREW			
107	1350409	5/16" HEX NUT			
108	910914	SCALE PLATE			
109	901-02-010-0501	1/4" X 1" ROUND HD SCREW			
110	910915	BUSHING			
111	910916	LABEL			
123	910925	SWITCH			



REPLACEMENT PARTS

Ref.			Ref.		
<u>No.</u>	<u>Part No.</u>	<u>Description</u>	<u>No.</u>	<u>Part No.</u>	<u>Description</u>
8	1350307	5/16" X 1" HEX HD SCREW	117A	910922	M14 X 130 ADJUSTING TREAD
9	1343390	5/16" LOCK WASHER	118	1350312	1/4" X 18MM FLT WASHER
11	910854	BOLT	119	910923	BIAS PACKING
12	904-01-031-5655	5/16" FLAT WASHER	120	909623	BACK STOP
13	901-03-010-3350	5/16" X 1/2" SOC. BOLT	121	910924	GRAPHITE PAPER
14	1352277	1/2" X 13 NUT	122	SANDING BELT	SEE CATALOG
15	910855	HANDLE BAR	124	910926	CORD
16	910858	1/2" KNOB	125	910927	MOTOR CORD
17	910859	BRACKET	126	910928	3/8" CONNECTOR
18	910860	PUSH SPINDLE	126A	910929	1/2" CONNECTOR
19	901-04-153-1794	1/4" X 1" SOC. BOLT	127	910930	3/8" X 350 MM HOSE CONNECTOR
21	910861	. 21 X 30 X 110MM SPRING	128	910931	1/2" X 450MM HOSE CONNECTOR
22	904-01-032-2476	3MM X 17 X 30MM FLT WASHER	129	910932	1/2" X 300MM HOSE CONNECTOR
23	902-01-201-8563	5/8" NUT	143	1340609	1/4" X 1/4" HEX HD SCREW
25	910862	SPINDLE	146	910935	3/16" X 3/8" ROUND HD SCREW
26	1350307	5/16" X 1" HEX HD SCREW	153	910938	POINTER
30	901-01-060-0605	5/16" X 1/2" HEX HD SCREW	164	910942	DETENT BAR
39	910866	BRACKET	174	910947	SPRING
40	910867	PIN	175	1243569	M4 NUT
41	901-02-010-0520	3/16" X 3/8" PAN HEAD SCREW	176	910948	ADJUSTING PLATE
42	n 911957	PLATEN COVER, AFTER S/N 010120	177	1342002	M6 X 8 HEX. HD. SCREW
	910868	PLATEN COVER, BEFORE S/N 010121	179	910949	1/8" OIL REFILLER
43	909639	5/16" X 1-1/4" KNOB	180	910950	BEARING
44	910870	EMERGENCY STOP	182	901-02-010-0514	1/4-20 X 3/8" ROUND HD SCREW
45	910871	3/16" X 3/4" ROUND HD SCREW	183	909622	4" DUST PORT
46	910872	SWITCH BOX	184	n 911958	IDLER COVER, AFTER S/N 010120
47	910873	HEX NUT 3/16"		910952	IDLER COVER, BEFORE S/N 010121
48	1341861	M12 X90MM SOC. BOLT	185	906630	4" HOSE CONNECTOR
49	1243476	12MM HEX NUT			
50	910874	MOTOR BRACKET			
51	910875	MOTOR SPACER			
52	910876	MOTOR 3HP			
53	910877	DRIVER ROLLER			
54	910878	CAP			
55	904-02-010-1713	5/8" LOCK WASHER			
56	n 902-01-201-2567	5/8" HEX NUT			
57	1350292	3/8" X 1" HEX HD SCREW			
58	910879	PLATE			
60	910880	CONNECTOR			
61	901-04-150-9402	5/16" X 3/4" SET SCREW			
62	910881	GEAR BOX			
72	1330145	M8 X 80MM SOC SCREW			
73	1243398	M8 HEX NUT			
75	910891	COVER			
76	910892	HANDLE			
77	901-03-040-8015	1/4" X 5/8" PAN HD SCREW			
80	901-03-010-0757	5/ 16" X 3/4" SOC SCREW			
90	901-03-010-0229	1/4" X 1/2" SOC. SCREW			
112	910917	3/8" X 25MM HANDLE			
113	910918	5/16" X 34.3MM FLT WASHER			
114	910919	SWIVEL PACKING			
115	1345594	M14 HEX NUT			
116	910920	BEARING			
117	910921	M14 X 110 ADJUSTING TREAD			



REPLACEMENT PARTS

Ref.

<u>No.</u>	<u>Part No.</u>	<u>Description</u>
8	1350307	5/16" X 1" HEX HD SCREW
24	901-03-010-0760	1/4 X 1 1/4" SOC. BOLT
27	910863	BRACKET
28	910864	SPINDLE
29	910845	5/16" X 1-3/8" FLAT WASHER
30	901-01-060-0605	5/16" X 1/2" HEX HD SCREW
31	1312017	BEARING
32	910865	IDLER ROLLER
33	909637	KNOB
34	909627	SPINDLE
35	910856	8X8X315 KEY
36	1340243	M4 X 10MM SOC. BOLT
37	909628	TABLE
38	901-03-010-0791	3/8-16 X 3/4" SOC. BOLT
131	909630	R. H. TABLE COVER
132	909631	L. H. TABLE COVER
133	909638	3/16-24 X 3/8" PAN HD SCREW
135	909624	SPINDLE
137	910612	3" RUBBER DRUM
138	910613	2" RUBBER DRUM
139	910614	1 1/2" RUBBER DRUM
140	SANDING SLEEVE	SEE CATALOG
150	909636	HEX ROD
152	909632	RETRACTION PLATE
157	909629	4" TABLE PACKING
158	909633	3" TABLE PACKING
159	909634	2 1/2" TABLE PACKING
160	909635	1 1/2" TABLE PACKING
161	910857	3/16-24 X 3/8" FLAT HD SCREW
162	910940	RING
163	910941	IDLER ROLLER COVER
179	910949	1/8" OIL REFILLER

STANDARD SAFETY EQUIPMENT

In order to promote tool safety, Delta Machinery strictly enforces the policy of repairing or replacing any damaged or missing standard safety equipment on machines presented to Delta Authorized Service Centers for service/repairs. Any product that is presented to a Delta Authorized Service Centers for repairs which contains missing or damaged standard safety equipment will have that equipment repaired or replaced and the customer will be charged for any such service/repairs. Customers can avoid such charges only if the missing safety component is supplied to the service center at the time of repair.

This parts list is provided to aid in obtaining service parts. Copies of the instruction and maintenance literature can be obtained through the Delta Technical Publications Department or through your service outlet.