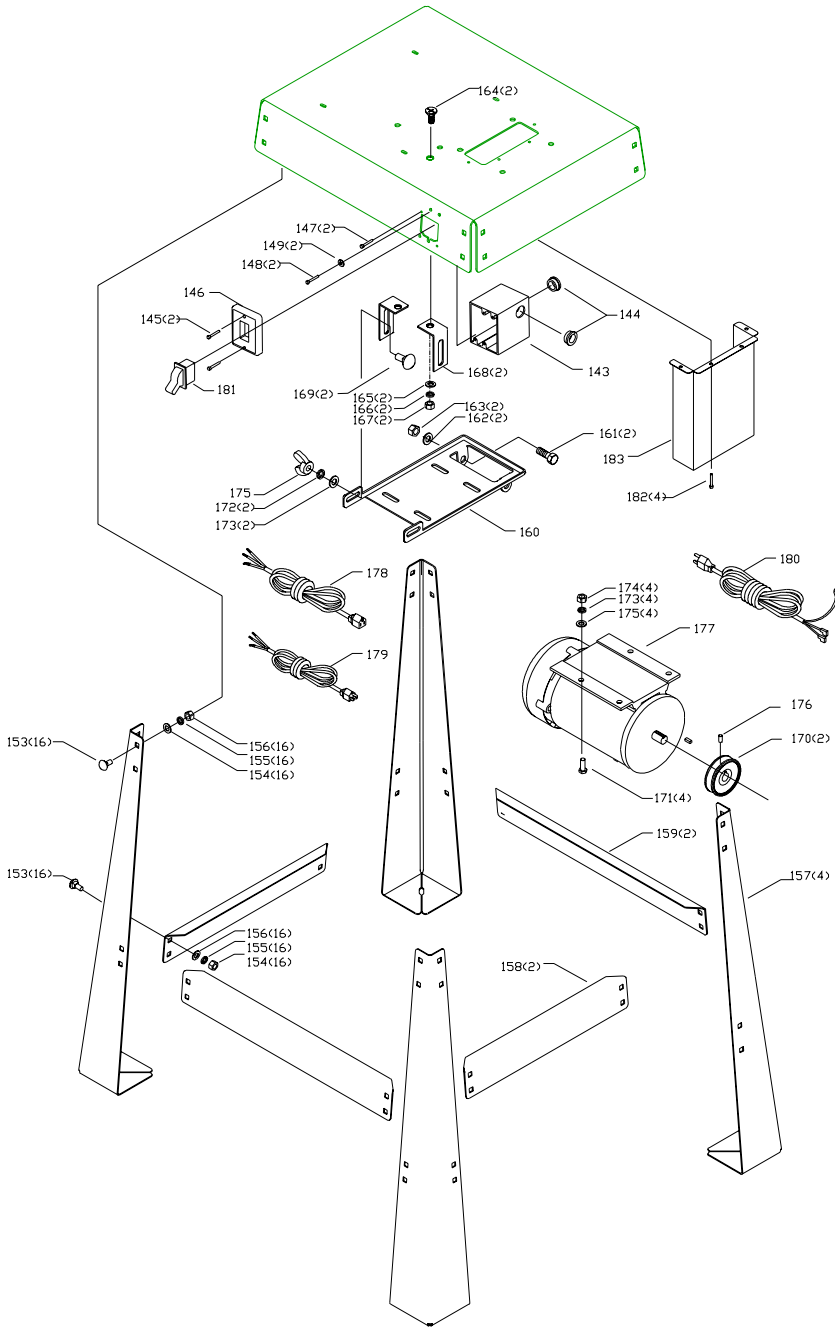


REPLACEMENT PARTS

Ref.			Ref.		
<u>No.</u>	<u>Part No.</u>	<u>Description</u>	<u>No.</u>	<u>Part No.</u>	<u>Description</u>
2	SEE CATALOG	ABRSIVE DISK	75	1231522	5/32 X 1/2 PIN
4	416-02-339-0001	DISK ASSY,, INCL.: REF. 5 & 6	76	418-03-055-0001	KEY
5	901-03-030-0761	1/4-20 X 1/2" SCREW	77	911371	1/4-28 X 1" SET SCREW
6	911902	DISK FLANGE	78	1087397	POINTER
7	911531	5/16-18 X 1/2 SET SCREW	79	901-02-010-0561	#10-32 X 3/8 R H SCREW
8	909075	DISK TABLE	80	909096	5/16-18 X 7/8" HEX HD SCR
9	910983	TRUNNION ASS'Y, INCL.: REF. 10 & 11	81	911370	WASHER
10	951-02-010-7820	SCALE	82	904-02-010-1703	5/16 LOCK WASHER
11	910480	2MM X 6MM RIVET	83	909097	3/8-16 X 3.1/2" STUD
12	910178	TRUNNION	84	904-01-010-1605	3/8 FLAT WASHER
13	901-01-060-0612	1/4-20 X 5/8" SCREW	85	902-01-040-1026	3/8-16 HEX NUT
14	904-01-010-1603	WASHER	86	909935	LEVER
15	1350293	WASHER	87	928-01-023-1644	SPRING
17	911473	ACCESS COVER	88	902-01-213-1635	3/8-16 LOCK NUT
18	901-03-043-1713	08-32 X 3/8" SCREW	89	951-02-010-7822	SCALE
19	911369	5/16-18 X 3 3/4" HEX SCREW	90	910480	2MM X 6MM RIVET
20	430-04-104-0004	WASHER	91	905-01-010-2705	PIN
21	904-02-010-1703	WASHER	92	418-03-088-0001	STOP
22	901-03-010-0768	10-24 X 1 1/4" SCREW	93	909098	ECCENTRIC
23	902-01-223-1171	10-24 HEX NUT	94	910179	RETAINING RING
24	901-04-150-0235	10-24 X 3/8" SCREW	95	406-12-074-0001	PLUG
25	909079	COVER	96	911531	5/16-18 X 1/2 SET SCREW
26	901-03-043-1663	10-32 X 1/2" SCREW	97	901-03-043-1191	5/16-18 X 1/2" SCREW
27	430-04-104-0010	WASHER	98	909100	KNOB
28	420-01-111-0003	STUD	99	909101	CAM SHAFT
29	910984	CLAMP ASS'Y	100	904-01-033-1306	WASHER
31	422-04-075-5001	POINTER "	101	928-05-013-1693	WAVE WASHER
32	901-02-010-0502	1/4-20 X 1/4" SCREW	102	905-05-040-2108	COTTER PIN
33	904-01-031-2925	WASHER	103	909102	SLEEVE
34	928-01-021-4125	SPRING	104	909935	LEVER
35	909080	KNOB	105	928-01-023-1644	SPRING
36	909081	DRIVE SHAFT	106	902-01-213-1635	3/8-16 LOCK NUT
37	909082	0.197 X 0.197 X 4.5 KEY	107	910990	UPPER IDLER PULLEY ASS'Y
38	910985	DRIVE PULLEY ASS'Y, INCL.: REF. 39			, INCL.: REF. 109, 110, 111, & 112
39	911531	5/16-18 X 1/2 SET SCREW	109	909105	UPPER IDLER SHAFT
40	909940	BELT	110	911302	WAVE WASHER
41	920-04-020-5348	BEARING	111	910181	RETAINING RING
42	910176	RETAINING RING	112	1086894	BEARING
43	910177	RETAINING RING	113	909104	IDLER SHAFT SUPPORT
44	910178	RETAINING RING	114	905-01-010-6715	3/16" X 5/8" PIN
45A	911953	LOWER IDLER PULLEY ASS'Y	115	909106	UPPER IDLER COVER
48	406-12-111-0004	FRAME	116	909107	KNOB
49	904-01-010-1605	WASHER	117	909108	1/4-20 X 3/4" STUD
50	902-01-040-1026	3/8-16 NUT	118	911307	BACK PANEL ASS'Y
51	909935	LEVER	120	909107	KNOB
52	928-01-023-1644	SPRING	121	909108	1/4-20 X 3/4" STUD
53	902-01-213-1635	38 X 16 LOCK NUT	122	901-02-030-0466	08-32 X 3/8" SCREW
54	909088	SCREW	123	909111	DUST COLLECTION BOX
55	904-02-010-1703	5/16 LOCK WASHER	124	901-03-043-1663	#10-32 X 3/8 SCREW
56	910987	BEARING HOUSING , INCL.: REF. 57 & 58	125	909115	#10-32 X 1/2 SCREW
57	920-04-020-5348	BEARING	126	909113	WASHER
58	910176	RETAINING RING	127	909114	DUST COLLECTION PORT
59	901-04-261-4005	5/16-18 X 2 1/2"HEX BOLT	128	909115	#10-32 X 1/2 SCREW
60	904-02-010-1703	5/16 LOCK WASHER	129	909116	END COVER
61	909092	WASHER	132	901-03-040-8015	1/4-20 X 1/2" SCREW
63	905-01-010-2712	1/4" X 1 1/4" SPRING PIN	133	406-12-031-0006	SHAFT COVER
65	SEE CATALOG	6X48 BELT	136	908996	DIRECTION LABEL
67	910988	DUST DIVERTER ASS'Y	138	908995	WARNING LABEL
70	901-03-010-3331	10-24 X 3/4" SCREW	139	908994	DIRECTION LABEL
71	902-01-223-1177	10-32 X 1/2" CLINCH NUT	140	910480	2MM X 6MM RIVET
72	430-04-104-0010	WASHER	141	908993	WARNING LABEL
73	909095	TABLE	142	n A00667	HARDWARE PACK
74	910989	TRUNNION ASS'Y			
		, INCL.: REF. 75, 76, 77, 78 & 79			

REPLACEMENT PARTS



Ref.	No.	Part No.	Description
	143	909117	SWITCH BOX
	144	438-01-004-0069	CORD CLAMP
	145	911546	SCREW
	146	908864	SWITCH COVER
	147	911547	#8-18 X .62 BUTON HD SCREW
	148	901-05-183-1142	10-32 X 5/8" SCREW
	149	1320101	WASHER
	153	901-11-023-1476	5/16-18 X 5/8" SCREW
	154	904-01-011-5747	WASHER
	155	1343390	WASHER
	156	902-01-210-1072	5/16-18 LOCK NUT
	157	909318	LEG
	158	909320	SHORT LEG BRACE
	159	911904	LONG LEG BRACE
	160	909322	MOTOR MOUNT PLATE
	161	901-01-060-3130	1/2-13 X 3/4" SCREW
	162	1342886	WASHER
	163	1347293	1/2X13 NUT-LOCK
	164	901-01-060-0606	5/16 X 18 X5/8" SCREW
	165	904-01-011-5747	WASHER
	166	1343390	LOCK WASHER
	167	902-01-210-1072	5/16" NUT
	168	912025	TENNSION BRACKET
	169	901-11-020-0808	5/16-18 X 1" SCREW
	170	41-033	2-3/4 OD-5/8 B PULLEY
	171	1350307	5/16-18 X 1" SCREW
	172	904-01-011-5747	WASHER
	173	1343390	WASHER
	174	902-01-210-1072	5/16 - 18 NUT
	175	902-04-010-1403	NUT-WING
	176	911531	5/16-18 X 1/2 SET SCREW
	177	910073	1.5 HP 1PH MOTOR
	178	911379	CORD
	179	911380	CORD
	180	911995	CORD
	181	438-01-017-0206	SWITCH
	182	909115	#10-32 X 1/2 SCREW
	183	909315	BELT GUARD
	184	n 927-03-020-2660	KEY

STANDARD SAFETY EQUIPMENT

In order to promote tool safety, Delta Machinery strictly enforces the policy of repairing or replacing any damaged or missing standard safety equipment on machines presented to Delta Authorized Service Centers for service/repairs. Any product that is presented to a Delta Authorized Service Centers for repairs which contains missing or damaged standard safety equipment will have that equipment repaired or replaced and the customer will be charged for any such service/repairs. Customers can avoid such charges only if the missing safety component is supplied to the service center at the time of repair.