

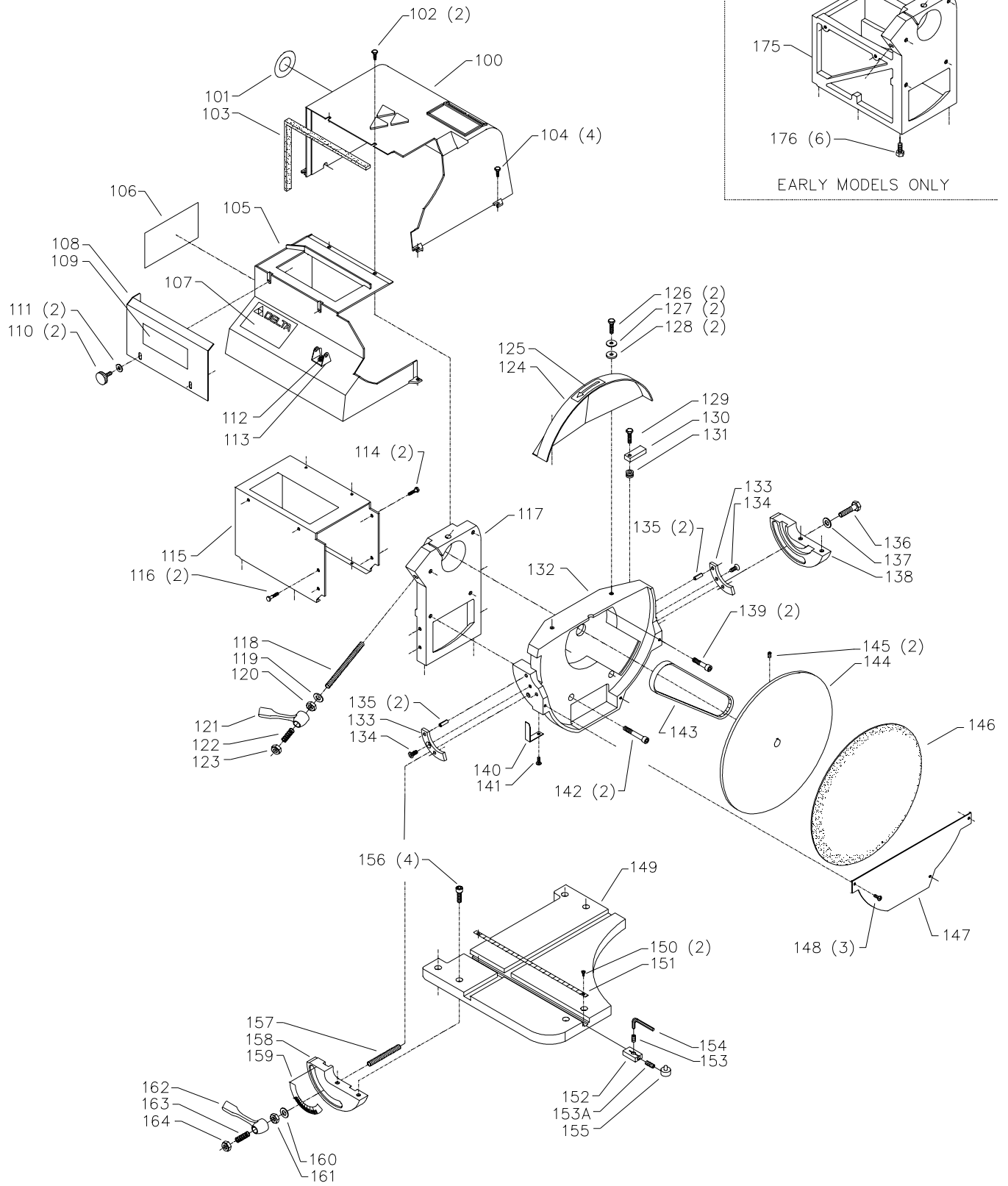
# REPLACEMENT PARTS

Ref.			Ref.		
<u>No.</u>	<u>Part No.</u>	<u>Description</u>	<u>No.</u>	<u>Part No.</u>	<u>Description</u>
1	406-12-031-0001	UPPER IDLER COVER	35	406-12-031-0006	COVER
2	406-12-138-0001	KNOB	36	1086894	BALL BEARING
3	406-12-020-0001	END CAP	37	406-12-406-0001	LOWER IDLER SHAFT, INCL:
*	406-12-362-0003	UPPER IDLER ASSY, CONST OF:	38	904-15-012-0293	EXT RET RING
4	1086894	BALL BEARING	39	927-03-010-2695	KEY
5	406-12-362-0002	UPPER IDLER	40	406-12-362-0001	LOWER IDLER, INCL:
6	406-12-406-0003	UPPER IDLER SHAFT, INCL:	41	901-04-150-0232	1/4-20 X 3/8" HEX SOC SET SCREW
7	904-15-012-0293	EXT RET RING	42	904-15-102-0282	INT RET RING, (SEE NOTE A)
8	905-01-010-6715	3/16" X 5/8" SPRING PIN	42A	1086894	BALL BEARING
9	406-12-106-0002	SUPPORT	43	406-12-095-0006	TRUNNION
10	902-01-213-1635	3/8-16 LOCK NUT	44	904-01-010-1620	FLAT WASHER
11	928-01-023-1644	SPRING	45	904-02-010-1703	5/16" LOCK WASHER
12	434-08-067-0002	LEVER	46	901-01-060-5770	5/16-18 X 2 1/4" HEX HD SCREW
13	406-12-105-0001	SLEEVE	47	406-12-104-0001	SPACER
14	905-05-040-2108	1/8" X 1" COTTER PIN	48	406-12-075-0001	POINTER
15	406-12-349-0002	PLATEN, INCL:	50	901-03-043-1661	#10-32 X 3/4" BUTTON HD SCREW
16	901-04-193-1314	SET SCREW	51	406-12-111-0002	STUD
17	406-12-074-0001	BRASS PLUG	52	406-12-391-0005	BELT TABLE
18	905-01-010-5075	1/4" X 3/4" SPRING PIN	53	901-03-010-0770	5/16-18 X 1 1/4" HEX SOC HD SCREW
19	406-12-355-0001	GIB, INCL:	54	406-12-395-0002	TRUNNION, INCL:
20	901-03-030-0761	1/4-20 X 1/2" FLAT HD SCREW	55	406-12-132-0002	SCALE
21	905-01-010-5075	1/4" X 3/4" SPRING PIN	56	904-01-010-1605	3/8" FLAT WASHER
22	928-05-013-1693	5/8" SPRING WASHER	57	902-01-040-1026	3/8-16 HEX NUT
23	904-01-033-1306	FLAT WASHER	58	434-08-067-0002	LEVER
24	406-12-319-0003	TENSION ASSY	59	928-01-023-1644	SPRING
25	904-15-062-0142	EXT RET RING	60	902-01-213-1635	3/8-16 LOCK NUT
26	406-12-042-0001	TRACKING ECCENTRIC	61	406-12-124-0002	BACK PANEL
27	406-03-138-0003	KNOB	62	406-12-412-0001	SCREW ASSY
28	901-03-043-1191	5/16-18 X 1/2" BUTTON HD SCREW	64	406-12-079-0002	RETAINER
29	908-25-013-1439	O-RING	65	n 406-12-628-0006	HARDWARE PACK
30	406-12-088-0003	BELT STOP	70	31-402	ABRASIVE BELT, 80 GRIT
31	901-01-063-1656	1/4-20 X 3/4" HEX HD SCREW		31-404	ABRASIVE BELT, 100 GRIT
32	902-01-120-1203	#10-32 HEX NUT		31-405	ABRASIVE BELT, 50 GRIT
33	901-02-183-1662	#10-32 X 5/8" HEX HD SCREW		31-406	ABRASIVE BELT, 120 GRIT
34	901-03-040-8015	1/4-20 X 1/2" BUTTON HD SCREW			

\* NOT SHOWN ASSEMBLED

## SERVICE NOTE:

- A- Retaining ring (Ref No. 42) is a special retainer with a slightly tapered circumference on one side only. Care must be taken to install this retainer with the tapered circumference side away from bearing (Ref. No. 42A).



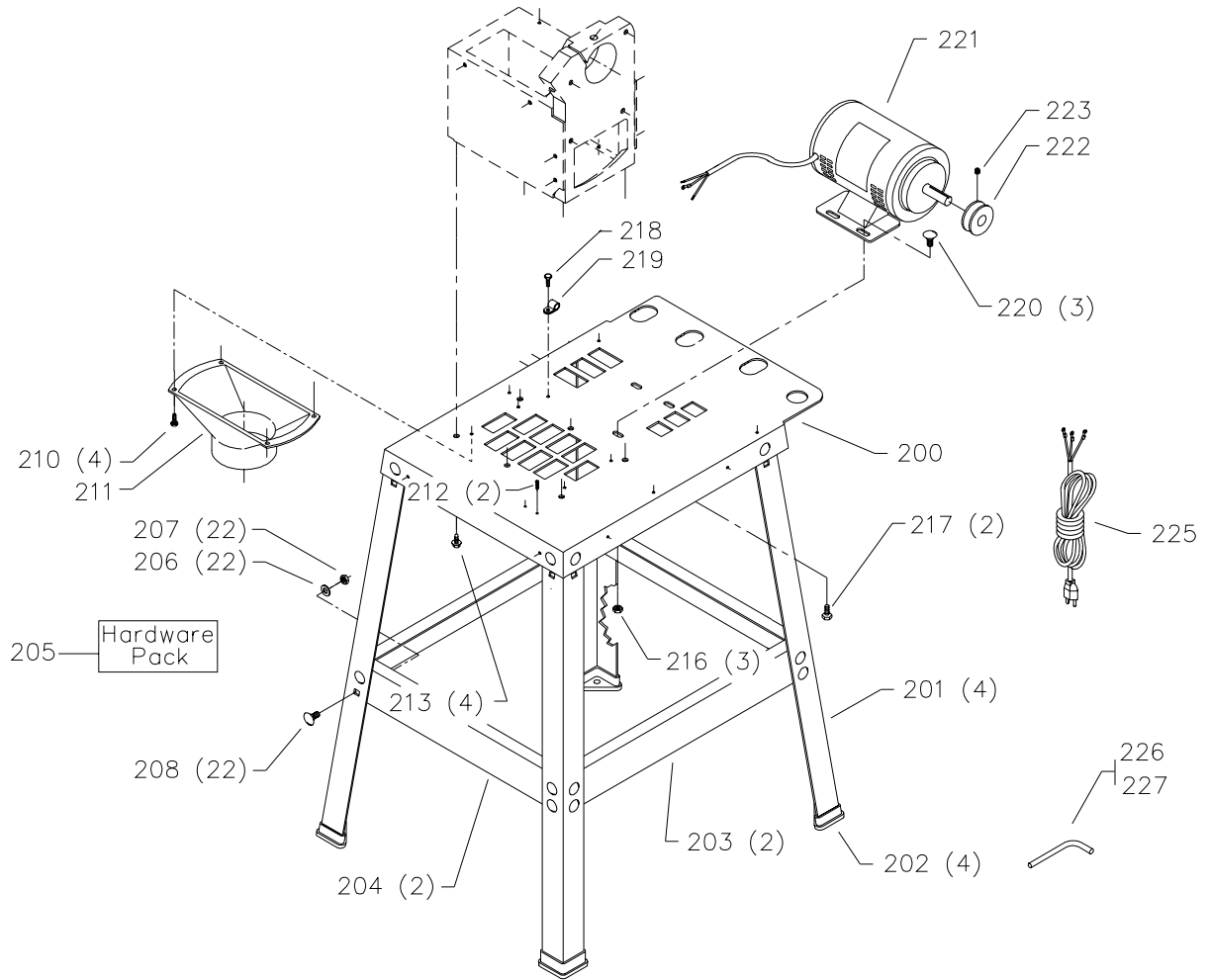
# REPLACEMENT PARTS

<b>Ref.</b>	<b>No.</b>	<b>Part No.</b>	<b>Description</b>
	100	406-12-331-0004	MOTOR SHROUD, INCL:
	101	406-12-754-0003	RESET DECAL
	102	901-06-423-1170	#10-32 X 5/8" HEX HD SCREW
	103	400-06-416-0001	GASKET, (SEE NOTE B)
	104	901-06-443-1806	#10-24 X 5/8" HEX HD SCREW (CMO)
		901-06-423-1170	#10-32 X 5/8" HEX HD SCREW (EMO)
	105	406-12-331-0005	FRONT COVER, INCL:
	106	406-12-752-0004	DIRECTIONAL ARROW
	107	406-12-137-0002	NAMEPLATE
	108	406-12-336-0001	DEFLECTOR PLATE, INCL:
	109	406-12-752-0005	WARNING LABEL
	110	406-12-412-0001	SCREW ASSY
	111	904-01-010-1614	FLAT WASHER
	112	49-330	SWITCH W/SCREW ASSY
	113	424-01-014-0002	SWITCH BRACKET
	114	901-01-060-0607	5/16-18 X 3/4" HEX HD SCREW, (CMO)
	115	406-12-313-0003	DUST BOX, (CMO)
	116	901-01-060-0607	5/16-18 X 3/4" HEX HD SCREW, (CMO)
	117	406-12-005-0005	BASE-UPRIGHT, (CMO)
	118	406-12-111-0004	STUD
	119	904-01-010-1605	3/8" FLAT WASHER
	120	902-01-040-1026	3/8-16 HEX NUT
	121	434-08-067-0002	LEVER
	122	928-01-023-1644	SPRING
	123	902-01-213-1635	3/8-16 LOCK NUT
	124	406-12-354-0006	UPPER DISC GUARD, INCL:
	125	406-12-754-0004	DIRECTIONAL ARROW
	126	901-01-063-1656	1/4-20 X 3/4" HEX HD SCREW
	127	904-01-031-4993	FLAT WASHER
	128	904-08-023-1665	1/4" RUBBER WASHER
	129	901-01-063-1704	1/4-20 X 1" HEX HD SCREW
	130	406-12-088-0002	DISC STOP
	131	904-08-023-1665	1/4" RUBBER WASHER
	132	406-12-354-0005	LOWER DISC GUARD, INCL:
	133	406-12-355-0001	GIB, INCL:
	134	901-03-030-0761	1/4-20 X 1/2" FLAT HD SCREW
	135	905-01-010-5075	1/4" X 3/4" SPRING PIN
	136	901-01-060-0617	3/8-16 X 1 1/2" HEX HD SCREW
	137	904-01-010-1605	3/8" FLAT WASHER
	138	406-12-395-0002	TRUNNION
	139	901-03-010-0779	5/16-18 X 1 1/2" HEX SOC HD SCREW
	140	406-12-075-0002	POINTER
	141	901-03-043-1663	#10-32 X 1/2" BUTTON HD SCREW
	142	901-03-010-8024	5/16-18 X 2 1/4" HEX SOC HD SCREW
	143	49-271	V-BELT, 25-1/8"
	144	406-12-339-0001	DISC, INCL:
	145	901-04-190-0207	5/16-18 X 1/2" HEX SOC SET SCREW
	146	31-421	12" ABRASIVE DISC, 50 GRIT
		31-422	12" ABRASIVE DISC, 80 GRIT
		31-423	12" ABRASIVE DISC, 120 GRIT
	147	406-12-072-0003	FRONT COVER PLATE
	148	901-03-043-1663	#10-32 X 1/2" BUTTON HD SCREW
	149	406-12-391-0006	DISC TABLE, INCL:
	150	901-06-143-1327	#06-32 X 5/16" PAN HD SCREW
	151	406-12-132-0002	SCALE
	152	406-12-310-0001	RADIUS STOP BLOCK, INCL.:
	153	906-00-000-2438	1/8" PIPE PLUG, (CMO)
	153A	901-04-140-9406	1/4-20 X 3/4" HEX SOC HD SCREW, (EMO)
	154	955-03-010-0003	WRENCH, (CMO)
	155	406-12-071-0001	GUIDE PIN
	156	901-03-010-0750	5/16-18 X 1" HEX SOC HD SCREW
	157	406-12-111-0002	STUD
	158	406-12-395-0001	TRUNNION, INCL:
	159	406-12-132-0001	SCALE
	160	904-01-010-1605	3/8" FLAT WASHER
	161	902-01-040-1026	3/8-16 HEX NUT
	162	434-08-067-0002	LEVER
	163	928-01-023-1644	SPRING
	164	902-01-213-1635	3/8-16 LOCK NUT
	175	406-12-305-0001	BASE, (EMO)
	176	901-01-060-0607	5/16-18 X 3/4" HEX HD SCREW, (EMO)

## SERVICE NOTE:

B- Gasket (Ref. No. 103) sold at one length and must be cut per application.

# REPLACEMENT PARTS

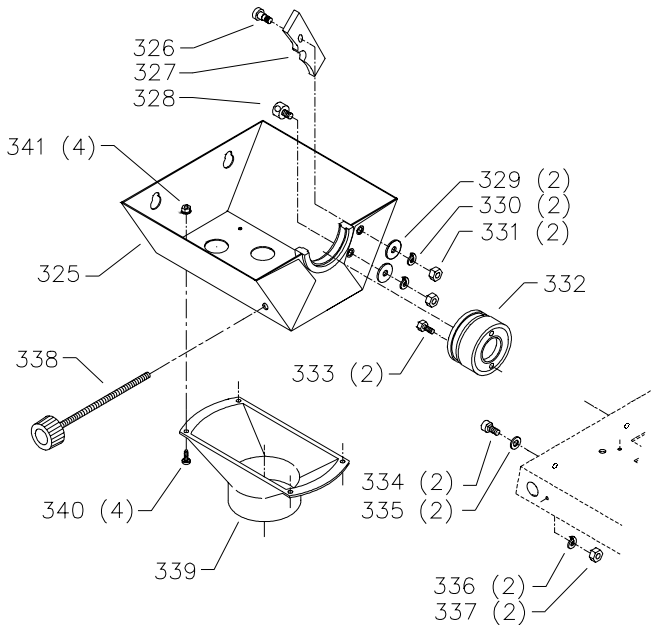
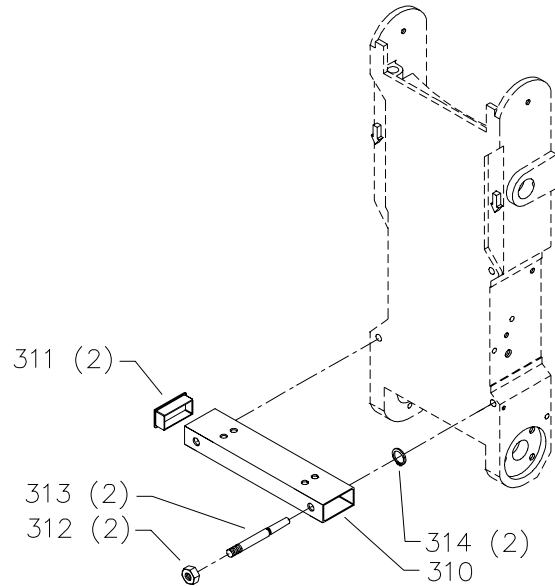


Ref. No.	Part No.	Description
*	406-12-305-0005	STAND ASSY, CONST OF:
200	406-12-305-0004	SHELF
201	427-99-066-0044	LEG
202	427-99-048-0001	FOOT
203	427-99-014-0095	TIE BAR-22.080"
204	427-99-014-0094	TIE BAR-19.695"
205	406-12-725-0001	HARDWARE PACK, CONST OF:
206	904-01-013-1855	FLAT WASHER
207	902-01-013-1859	5/16-18 HEX NUT
208	901-11-023-1476	5/16-18 X 5/8" CARRIAGE HD SCREW
210	901-06-423-1170	#10-32 X 5/8" HEX HD SCREW
211	406-12-026-0001	DUST CHUTE
212	901-05-163-1126	#08-32 X 5/16" PAN HD SCREW
213	901-01-060-0607	5/16-18 X 3/4" HEX HD SCREW, (CMO)
216	902-01-503-1514	5/16-18 FLANGE NUT
217	901-01-060-0607	5/16-18 X 5/8" CARRIAGE HD SCREW
218	901-06-423-1170	#10-32 X 5/8" HEX HD SCREW
219	438-01-004-0015	CLAMP
220	901-11-023-1476	5/16-18 X 5/8" CARRIAGE HD SCREW
221	62-079	MOTOR W/SWITCH CORD
222	41-003	MOTOR PULLEY, INCL:
223	901-04-190-0201	5/16-18 X 5/16" HEX SOC SET SCREW
225	438-01-302-0668	CORD SET
226	955-03-020-2167	1/8" HEX WRENCH, (EMO)
227	955-03-010-0006	1/4" HEX WRENCH

\* NOT SHOWN ASSEMBLED

# REPLACEMENT PARTS

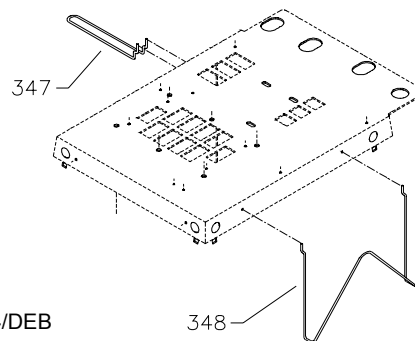
Ref. No.	Part No.	Description
310	31-286	FENCE, INCL:
311	436-02-020-0001	CAP
312	902-01-213-1635	3/8-16 LOCK NUT
313	406-12-071-0002	TAPERED PIN
314	904-15-010-7423	EXT RET RING



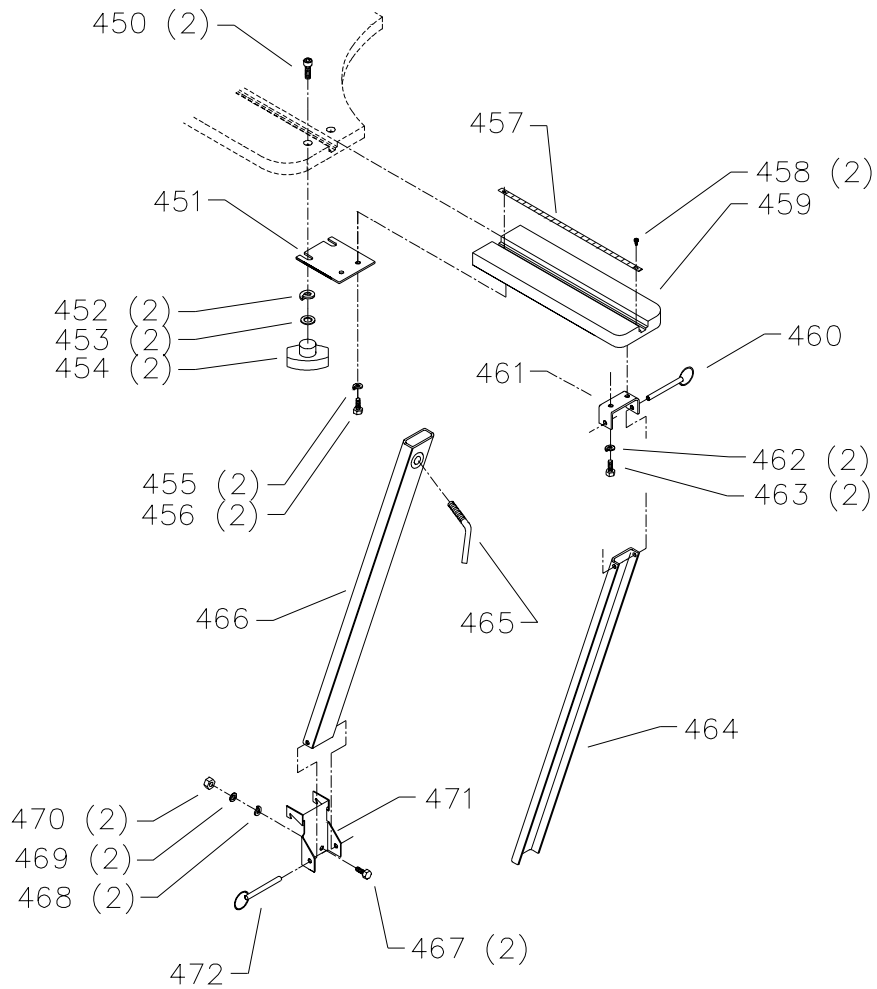
Ref. No.	Part No.	Description
*	31-289	DUST COLLECTOR TRAY, INCL:
325	406-12-313-0001	BOX
326	406-12-112-0006	SHOULDER SCREW
327	406-12-027-0002	CLAMP
328	406-12-110-0001	POST
329	904-01-031-2937	FLAT WASHER
330	904-02-010-1703	5/16" LOCK WASHER
331	902-01-010-1300	5/16-18 HEX NUT
332	406-12-107-0002	HUB
333	901-03-010-3309	1/4-20 X 5/8" HEX SOC HD SCREW
334	901-11-023-1476	5/16-18 X 5/8" CARRIAGE HD SCREW
335	904-01-010-1620	FLAT WASHER
336	904-02-010-1703	5/16" LOCK WASHER
337	902-01-010-1300	5/16-18 HEX NUT
338	406-12-412-0002	SCREW ASSY
339	406-12-026-0001	DUST CHUTE
340	901-02-453-1123	#10-32 X 1/2" PAN HD SCREW
341	902-01-293-1513	#10-32 KEPS NUT

\* NOT SHOWN ASSEMBLED

Ref. No.	Part No.	Description
*	31-288	TABLE EXTENSION, CONST OF:
347	406-12-060-0003	6" BELT HOLDER
348	406-12-060-0002	12" DISC HOLDER
*	NOT SHOWN ASSEMBLED	



# REPLACEMENT PARTS



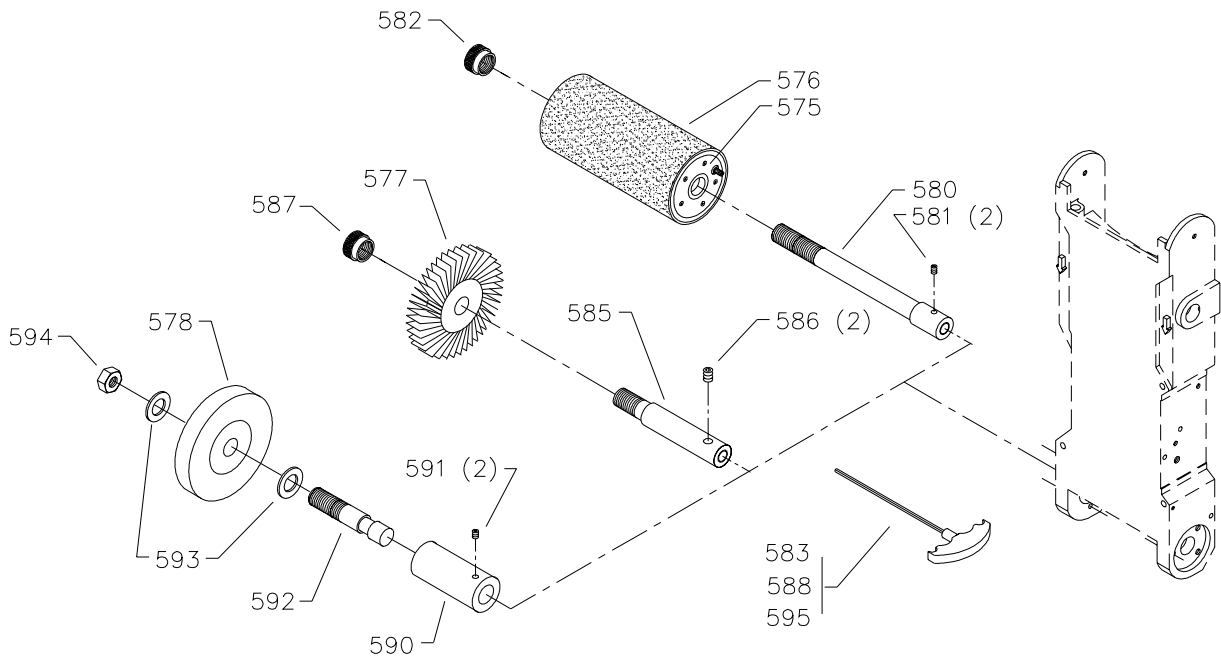
**Ref.**

**No. Part No. Description**

*	31-287	TABLE EXTENSION, CONST OF:
450	901-03-010-0750	5/16-18 X 1" HEX SOC HD SCREW
451	406-12-072-0004	MOUNTING PLATE
452	904-02-010-1703	5/16" LOCK WASHER
453	904-01-031-2937	FLAT WASHER
454	424-12-060-0005	KNOB
455	904-02-020-1702	1/4" LOCK WASHER
456	901-01-060-0611	1/4-20 X 1/2" HEX HD SCREW
457	406-12-132-0003	SCALE
458	901-06-143-1327	#06-32 X 5/16" PAN HD SCREW
459	406-12-391-0007	TABLE
460	406-12-071-0004	PULL PIN
461	406-12-014-0005	BRACKET
462	904-02-020-1702	1/4" LOCK WASHER
463	901-01-060-0611	1/4-20 X 1/2" HEX HD SCREW
464	406-12-089-0003	SUPPORT
465	436-07-111-0002	HANDLE
466	406-12-366-0002	LEG
467	901-01-060-0611	1/4-20 X 1/2" HEX HD SCREW
468	904-01-031-4993	FLAT WASHER
469	904-02-020-1702	1/4" LOCK WASHER
470	902-01-120-1034	1/4-20 HEX NUT
471	406-12-014-0006	LOWER BRACKET
472	406-12-071-0004	PULL PIN

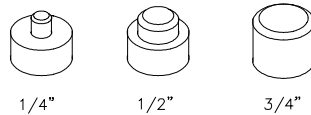
\* NOT SHOWN ASSEMBLED

# REPLACEMENT PARTS



<b>Ref. No.</b>	<b>Part No.</b>	<b>Description</b>	<b>Ref. No.</b>	<b>Part No.</b>	<b>Description</b>
575	31-265	3X9 PNEUMATIC DRUM	588	422-32-101-0001	3/16" T HANDLE WRENCH
	31-269	4X9 PNEUMATIC DRUM	590	31-283	DRUM SANDER ADAPTER, INCL:
576	n OPTIONAL	SANDING SLEEVE	591	901-04-190-0209	3/8-16 X 3/8" HEX SOC SET SCREW
577	31-290	FLAP WHEEL, 80 GRIT	592	406-12-071-0012	PIN
	31-291	FLAP WHEEL, 120 GRIT	593	904-01-031-4953	1/2" FLAT WASHER
578	OPTIONAL	BUFFING WHEEL	594	902-01-020-1227	1/2-20 JAM NUT
580	31-285	LONG ARBOR, INCL:	595	422-32-101-0001	3/16" T HANDLE WRENCH
581	901-04-190-0209	3/8-16 X 3/8" HEX SOC SET SCREW			
582	406-12-138-0002	KNOB			
583	422-32-101-0001	3/16" T HANDLE WRENCH			
585	31-284	SHORT ARBOR, INCL:			
586	901-04-190-0209	3/8-16 X 3/8" HEX SOC SET SCREW			
587	406-12-138-0002	KNOB			

<b>Ref. No.</b>	<b>Part No.</b>	<b>Description</b>
600	31-282	RADIUS STARTING PINS - SET OF (3) THREE



## STANDARD SAFETY EQUIPMENT

In order to promote tool safety, Delta Machinery strictly enforces the policy of repairing or replacing any damaged or missing standard safety equipment on machines presented to Delta Authorized Service Centers for service/repairs. Any product which is presented to a Delta Authorized Service Centers for repairs which contains missing or damaged standard safety equipment will have that equipment repaired or replaced and the customer will be charged for any such service/repairs. Customers can avoid such charges only if the missing safety component is supplied to the service center at the time of repair.

*This parts list is provided to aid in obtaining service parts. Copies of the instruction and maintenance literature can be obtained through the Delta Technical Publications Department or through your service outlet.*