

REPLACEMENT PARTS

Ref. No.	Part No.	Description	Ref. No.	Part No.	Description
1	406-13-031-0003	COVER	42	902-01-020-9101	3/4-16 LOCK NUT
2	406-13-122-0005	SPRING CLIP	43	902-01-503-1514	5/16-18 FLANGE NUT
3	901-05-163-1229	10-16 X 1/2" PAN HD SCREW	44	406-13-103-0003	FLANGE (LARGE)
4	406-13-072-0004	STATIONARY ROLLER PLATE	45	406-13-139-0002	SPHERICAL BEARING
5	406-13-080-0006	DRIVE ROLLER	45A	904-07-010-5554	FIBER WASHER
6	901-04-190-0203	1/4-20 X 3/8" HEX SOC SET SCREW	46	406-13-103-0003	FLANGE (LARGE)
7	920-75-103-1823	BUSHING	47	406-13-400-0003	7" DIA. HANDWHEEL ASSY - , 31-255X
8	901-06-443-1806	10-24 X 1/2" HEX HD SCREW		406-13-400-0002	7" DIA. HANDWHEEL ASSY - 31-250 CMO
9	901-03-010-0224	10-32 X 1/2" HEX SOC HD SCREW		406-13-400-0001	5" DIA. HANDWHEEL ASSY - 31-250 EMO
10	406-13-013-0001	MOTOR MOUNT	48	n 901-04-150-6233	5/16-18 X 5/8" HEX SOC SET SCREW
11	901-01-063-1869	3/8-16 X 1/2" HEX HD SCREW, NOTE A	49	422-39-139-0001	BEARING
	901-01-060-3104	3/8-16 X 1/2" HEX HD SCREW, NOTE B	50	406-13-014-0011	HANDWHEEL BRACKET
12	911611	MOTOR, 31-250 T3	51	901-06-163-1903	10-24 X 1/2" HEX HD SCREW
	62-601	MOTOR, 31-250 T1 & T2, 31-255X, INCL.;	52	426-03-388-0001	COLLAR ASSY, INCL.:
12A	438-01-302-0705	CABLE ASSY., AFTER S/N 01A-11775	53	901-04-150-0208	1/4-20 X 1/4" HEX SOC SET SCREW
	438-01-302-0694	CABLE ASSY., BEFORE S/N 01A-11776	54	406-13-406-0001	GEARSHAFT ASSY, INCL.:
12B	912007	BRUSH CAP, 31-250 T3	55	406-13-051-0006	GEAR
	438-02-041-0011	BRUSH CAP, 31-250 T1 & T2, 31-255X	56	905-01-010-2735	1/8" X 1 1/4" SPRING PIN
12C	438-02-040-0005	SPRING, 31-250 T1 & T2, 31-255X	57	406-13-014-0013	HANDWHEEL BRACKET
12D	912006	BRUSH & SPRING, 31-250 T3	58	904-01-010-1620	FLAT WASHER
	438-02-007-0028	BRUSH, 31-250 T1 & T2, 31-255X	59	902-01-133-1529	1/4-20 FLANGE NUT
14	901-03-010-0755	1/4-20 X 3/4" HEX SOC HD SCREW	60	901-03-010-0768	10-24 X 1 1/4" HEX SOC HD SCREW
15	904-02-020-1702	1/4" LOCK WASHER, NOTE D	61	406-13-051-0007	MITER GEAR
16	901-03-010-0750	5/16-18 X 1" HEX SOC HD SCREW - CMO	62	406-13-051-0004	TIMING GEAR
	901-03-010-0757	5/16-18 X 3/4" HEX SOC HD SCREW - EMO	63	901-11-020-0834	5/16-18 X 3/4" CARRIAGE HD SCREW
17	904-02-010-1703	5/16" LOCK WASHER	64	406-13-133-0005	DRIVE BELT, 31-250 T3, 31-255X
18	406-13-104-0005	TABLE SPACER, NOTE C		406-13-133-0003	DRIVE BELT, 31-250 T1 & T2
19	901-06-163-1903	10-32 X 3/8" HEX SOC HD SCREW	65	n 901-01-060-0609	5/16-18 X 1 1/2" HEX HD SCREW
20	406-13-075-0001	POINTER	66	904-01-010-1604	FLAT WASHER
21	406-13-391-0001	TABLE	67	406-13-080-0009	ROLLER
22	928-05-013-1681	WAVE WASHER	68	406-13-104-0003	SPACER
23	406-13-080-0002	IDLER ROLLER	69	406-13-051-0004	TIMING GEAR
24	31-814	CONVEYOR BELT	70	920-76-033-1822	THRUST WASHER
25	920-75-103-1829	BUSHING	71	901-11-023-1497	1/4-20 X 5/8" CARRIAGE HD SCREW
26	912004	BRACKET, 31-250 T3, INCL.: REF. 28	72	901-03-030-8013	1/4-20 X 3/4" FLAT HD SCREW
	406-13-314-0001	BRACKET, 31-250 T1 & T2, 31-255X	73	902-01-503-1514	5/16-18 FLANGE NUT
27	901-04-080-0109	1/4-20 X 1 1/2" HEX SOC SET SCREW	74	406-13-349-0006	FRAME, INCL.: 31-250 T2 & T3, 31-255X
28	908631	SPACER, 31-250 T3		406-13-349-0004	FRAME, LATE 31-250 T1, NOTE A INCL.:
	406-13-104-0002	SPACER, 31-250 T1 & T2, 31-255X		406-13-349-0002	FRAME, EARLY 31-250 T1, NOTE B INCL.:
29	901-02-123-1870	1/4-20 X 5/8" TRUSS HD SCREW, NOTE A	75	424-12-754-0007	NAMEPLATE, NOTE B
	901-02-120-7504	1/4-20 X 5/8" TRUSS HD SCREW, NOTE B	76	406-13-754-0011	HEIGHT / DIR. LABEL, NOTE A
30	406-13-112-0005	ELEVATING SCREW		406-13-754-0001	HEIGHT / DIR. LABEL, NOTE B
31	902-01-210-1036	3/4-16 LOCK NUT	77	406-13-754-0010	WARNING LABEL, NOTE A
33	406-13-628-0001	THRUST BEARING SERVICE KIT		406-13-754-0002	WARNING LABEL, NOTE B
36	902-01-293-1240	1/4-20 KEPS NUT	78	406-13-754-0014	NAMEPLATE, INDUSTRIAL, NOTE D
36A	902-01-503-1865	5/16-18 HEX NUT		406-13-754-0015	NAMEPLATE, 31-255X
37	406-13-103-0005	FLANGE (SMALL)		406-13-754-0012	NAMEPLATE, NOTE A
38	406-13-017-0003	SPHERICAL BUSHING		406-13-754-0003	NAMEPLATE, NOTE B
39	406-13-103-0005	FLANGE (SMALL)	79	406-13-059-0001	HINGE
40	406-13-004-0002	TABLE SUPPORT BAR - EMO	80	901-06-163-1903	10-24 X 1/2" HEX HD SCREW
40A	406-13-072-0006	SUPPORT PLATE, 31-250 T2 & T3, 31-255X	81	406-13-071-0003	HINGE PIN
	406-13-072-0005	SUPPORT PLATE, 31-250 T1	82	904-10-031-3810	WASHER
41	406-13-112-0005	ELEVATING SCREW	84	438-01-004-0070	CABLE TIE
			85	406-13-088-0001	STOP POST, 31-250 T2 & T3, 31-255X
			86	406-13-725-0006	HDWE PACK, 31-250 T3, , 31-255X
				406-13-725-0004	HDWE PACK, 31-250 T1 & T2
			87	911956	WARNING LABEL, 31-250 T3 ONLY

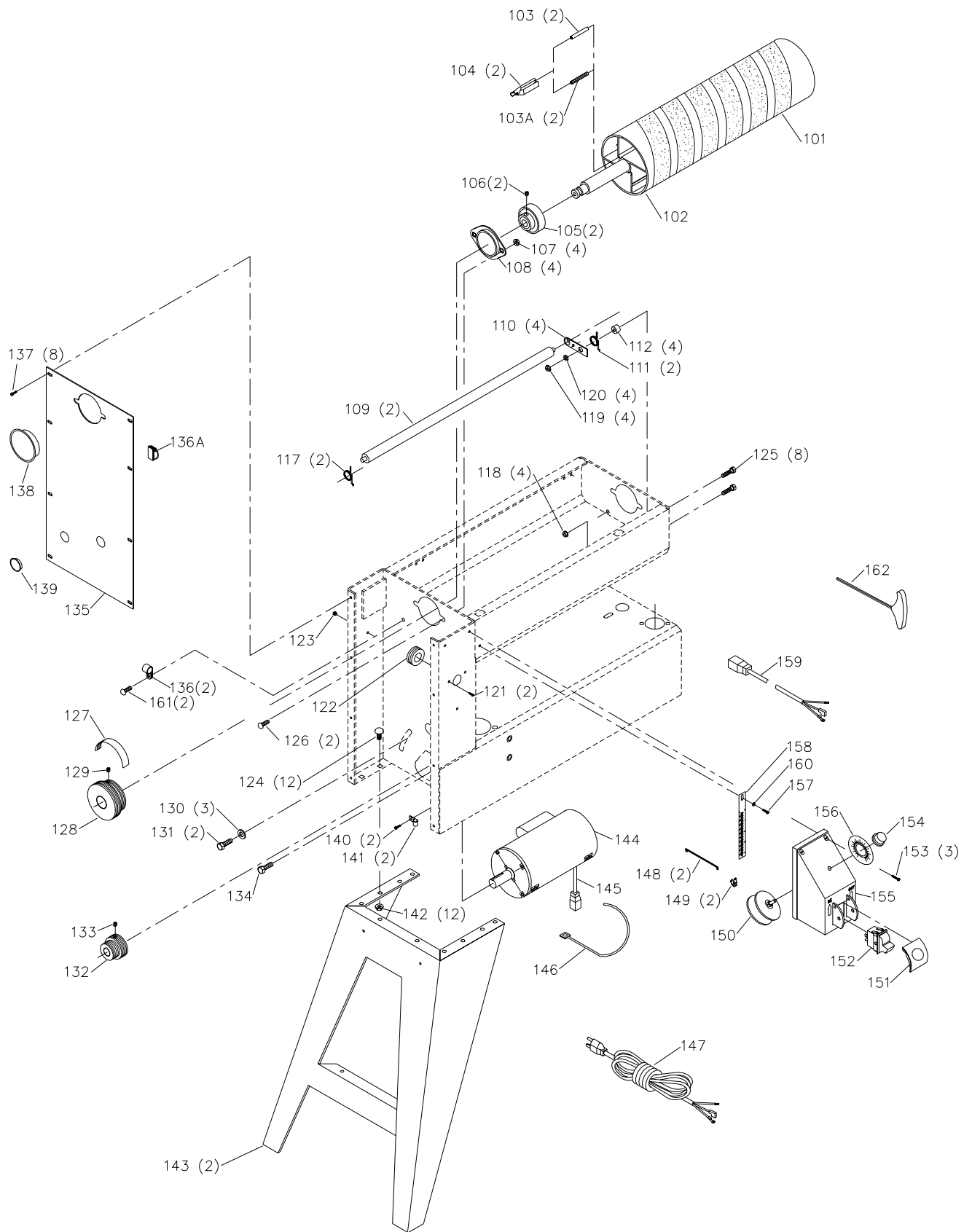
EMO=EARLY MODELS ONLY
CMO=CURRENT MODELS

NOTE A: S/N'S BEGINNING WITH 01E AMD ABOVE

NOTE B: S/N'S BEGINNING WITH 01D AMD BELOW

NOTE C: THIS SPACER WAS ONLY USED FROM SERIAL NO. 01E31623 TO 01H45848 OF TYPE 1.

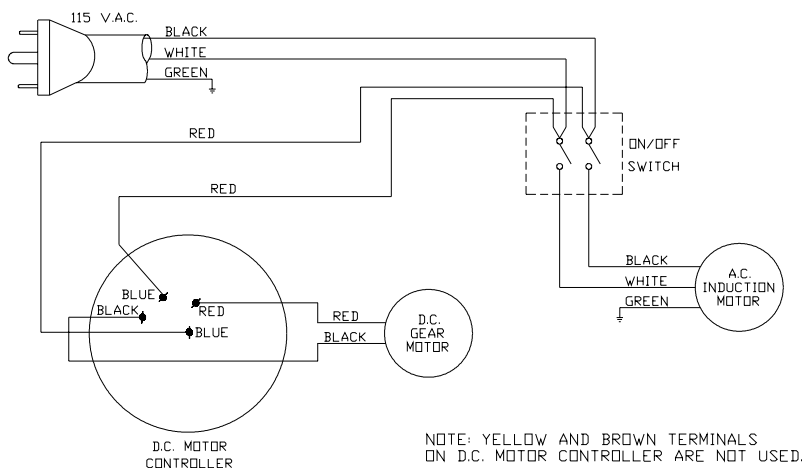
NOTE D: INDUSTRIAL UNITS NAMEPLATE SAY "DELTA INDUSTRIAL", NON-INDUSTRIAL UNITS NAMEPLATE SAY "DELTA"



REPLACEMENT PARTS

Ref. No.	Part No.	Description	Ref. No.	Part No.	Description
101	OPTIONAL	SANDING BELT	136	438-01-004-0015	CORD CLAMP - CMO
102	406-13-362-0001	DRUM ASSY, INCL:	136A	438-01-004-0104	CORD CLAMP, Stick On - EMO
103	905-01-103-1900	1/4" X 1 1/2" SPRING PIN - CMO	137	901-06-163-1903	10-24 X 1/2" HEX HD SCREW
103A	406-13-071-0005	1/4" X 1 1/2" SOLID KNURLED PIN - EMO	138	438-01-011-0075	PLUG
104	406-13-327-0001	CLIP ASSY	139	438-01-011-0064	PLUG
105	406-13-139-0001	SPHERICAL BEARING, INCL:	140	901-06-163-1903	10-24 X 1/2" HEX HD SCREW
106	901-04-151-9199	1/4-28 X 1/4" HEX SOC SET SCREW	141	438-01-004-0015	CABLE CLAMP 5/16"
107	902-01-503-1514	5/16-18 FLANGE NUT	142	902-01-503-1514	5/16-18 FLANGE NUT
108	406-13-103-0002	DRUM FLANGE	143	406-13-066-0002	LEG
109	406-13-080-0008	FRONT PRESSURE ROLLER	144	911901	MOTOR, 1-1/2HP, 1PH, 115V,
110	406-13-135-0001	LINK		62-700	31-250 T3, INCL:
111	406-13-122-0003	R.H. SPRING			MOTOR, 1-1/2HP, 1PH, 115V,
112	406-13-017-0001	BUSHING			31-250 T1 & T2, 31-255X INCL:
117	406-13-122-0004	L.H. SPRING	145	438-01-302-0661	CORD W/MALE CONNECT
118	902-01-133-1529	1/4-20 FLANGE NUT	146	438-01-004-0054	CABLE TIE
119	902-01-293-1240	1/4-20 KEPS NUT	147	438-01-302-0672	CORD SET
120	904-01-010-1614	FLAT WASHER	148	438-01-320-0259	JUMPER WIRE
121	901-05-473-1655	08-32 X 5/16" SCREW	149	438-01-018-0049	TERMINAL
122	438-01-011-0076	GROMMET	150	911609	D.C. SPEED CONTROLLER, 31-250 T3,
123	438-01-004-0105	HEYCO CLAMP		406-13-626-0001	INCL.: REF. 154, 155, & 156
124	901-11-023-1476	5/16-18 X 5/8" CARRIAGE HD SCREW			D.C. SPEED CONTROLLER,
125	901-01-063-1871	1/4-20 X 1" HEX HD SCREW, NOTE A			31-250 T1 & T2, 31-255X
	901-01-060-0623	1/4-20 X 1" HEX HD SCREW, NOTE B	151	422-39-067-0001	SWITCH ACTUATOR
126	901-11-020-0834	5/16-18 X 3/4" CARRIAGE HD SCREW	152	438-01-017-0206	SWITCH
127	406-13-133-0004	POLY V-BELT	153	901-06-163-1484	10-24 X 3/4" HEX HD SCREW
128	406-13-430-0002	DRIVEN PULLEY ASSY, INCL:	154	406-13-138-0002	KNOB
129	901-04-190-0203	1/4-20 X 3/8" HEX SOC SET SCREW	155	911610	SWITCH BOX ASSY, 31-250 T3, 31-255X, INCL:
130	904-01-010-1605	3/8" FLAT WASHER		406-13-313-0001	SWITCH BOX ASSY, 31-250 T1 & T2,, INCL:
131	901-01-060-0640	3/8-16 X 3/4" HEX HD SCREW	156	406-13-754-0004	VARIABLE SPEED LABEL
132	406-13-430-0001	DRIVER PULLEY ASSY, INCL:	157	901-06-443-1806	10-24 X 1/2" HEX HD SCREW
133	901-04-190-0203	1/4-20 X 3/8" HEX SOC SET SCREW	158	406-13-132-0002	SCALE
134	901-01-063-1830	3/8-16 X 3/4" NYLOK HEX HD SCREW	159	438-01-302-0671	FEMALE DISCONNECT
135	406-13-031-0005	COVER, NOTE A	160	904-01-013-1868	WASHER, NOTE A
	406-13-031-0004	COVER, NOTE B	161	904-01-010-1610	WASHER, NOTE B
			162	901-06-163-1903	10-24 X 1/2" SCREW
				955-03-023-1901	WRENCH, 31-250 T2 & T3, 31-255X

EMO=EARLY MODELS ONLY
CMO=CURRENT MODELS



STANDARD SAFETY EQUIPMENT

In order to promote tool safety, Delta Machinery strictly enforces the policy of repairing or replacing any damaged or missing standard safety equipment on machines presented to Delta Authorized Service Centers for service/repairs. Any product which is presented to a Delta Authorized Service Centers for repairs which contains missing or damaged standard safety equipment will have that equipment repaired or replaced and the customer will be charged for any such service/repairs. Customers can avoid such charges only if the missing safety component is supplied to the service center at the time of repair.

This parts list is provided to aid in obtaining service parts. Copies of the instruction and maintenance literature can be obtained through the Delta Technical Publications Department or through your service outlet.