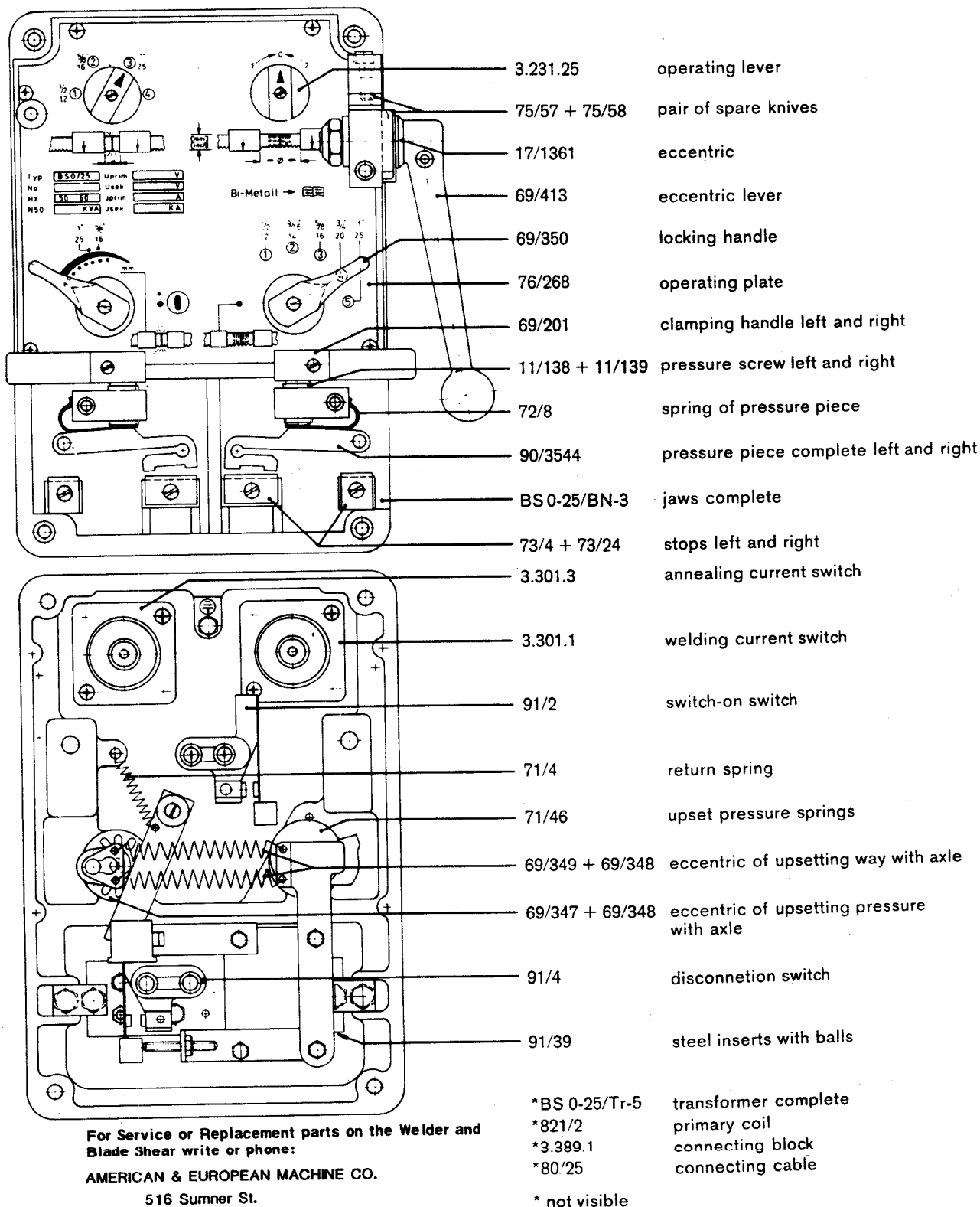
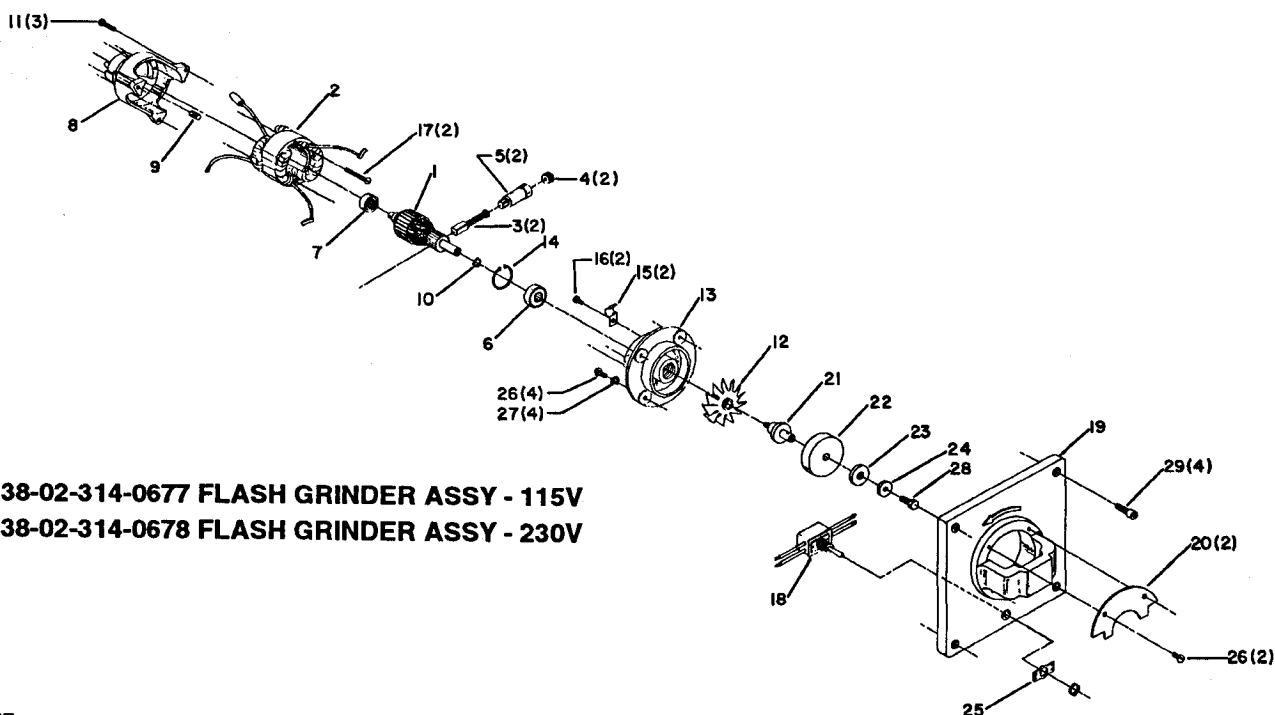


LIST OF REPLACEMENT PARTS FOR BLADE WELDER
(Specify type and serial number when ordering)



REPLACEMENT PARTS



438-02-314-0677 FLASH GRINDER ASSY - 115V

438-02-314-0678 FLASH GRINDER ASSY - 230V

REF NO	PART NUMBER	DESCRIPTION	REF NO	PART NUMBER	DESCRIPTION
*	438-02-314-0677	FLASH GRINDER ASSY - 115V, CONST OF:	13	400-08-031-0008	BEARING HOUSING
*	438-02-314-0678	FLASH GRINDER ASSY - 230V, CONST OF:	14	400-08-079-0008	BOTTOM BEARING RING
*	438-02-314-0675	MOTOR HOUSING - 115V, INCL:	15	400-08-060-0006	BRUSH HOLDER CLIP
*	438-02-314-0676	MOTOR HOUSING - 230V, INCL:	16	400-08-112-0018	BRUSH HOLDER SCREW
1	438-02-335-0026	ARMATURE - 220V	17	400-08-112-0017	FIELD SCREW
1	438-02-335-0027	ARMATURE - 115V	18	426-05-628-5004	SWITCH KIT
2	438-02-336-0027	FIELD - 115V	19	426-05-054-5008	GUARD
2	438-02-336-0026	FIELD - 230V	20	426-05-054-5010	GUARD
3	438-02-007-0016	BRUSH - 115V	21	426-05-403-5001	FLANGE
3	438-02-007-0017	BRUSH - 230V	22	426-05-100-5005	WHEEL
4	400-08-020-0004	BRUSH CAP	23	426-05-103-5001	FLANGE
5	438-02-041-0005	BRUSH HOLDER	24	426-05-104-5011	SPACER
6	400-08-139-0010	FRONT BEARING	25	438-01-021-0044	NAME PLATE
7	400-08-139-0007	REAR BEARING	26	901-02-010-0593	#10-24 X 3/8" ROUND HD SCREW
8	400-08-031-0009	MOTOR HOUSING	27	904-03-020-1775	3/16" INT TOOTH WASHER
9	400-08-074-0003	ARMATURE BEARING PLUG	28	901-01-063-1300	1/4-28 X 1 1/2" HEX HD SCREW
10	400-08-079-0006	ARMATURE SPACING RING	29	901-03-010-3309	1/4-20 X 5/8" HEX SOC HD SCREW
11	400-08-112-0019	SCREW			
12	438-02-333-0003	FAN			

* NOT SHOWN ASSEMBLED

For Service or Replacement Parts on the
Flash Grinder, write or phone:

DELTA INTERNATIONAL
4290 Raines Road
Memphis, TN, 38118
Phone: 1-(901) 363-8800

HOTLINE 1-800-223-PART

STANDARD SAFETY EQUIPMENT

In order to promote tool safety, Delta International Machinery Corp. strictly enforces the policy of repairing or replacing any damaged or missing standard safety equipment on machines presented to Delta Authorized Service Center for service/repairs. Any product which is presented to a Delta Authorized Service Center for repairs which contains missing or damaged standard safety equipment will have that equipment repaired or replaced and the customer will be charged for any such service/repairs. Customers can avoid such charges only if the missing safety component is supplied to the service center at the time of repair.

This parts list is provided to aid in obtaining service parts. Copies of the instruction and maintenance literature can be obtained through the Delta Technical Publications Department or through your local service outlet.