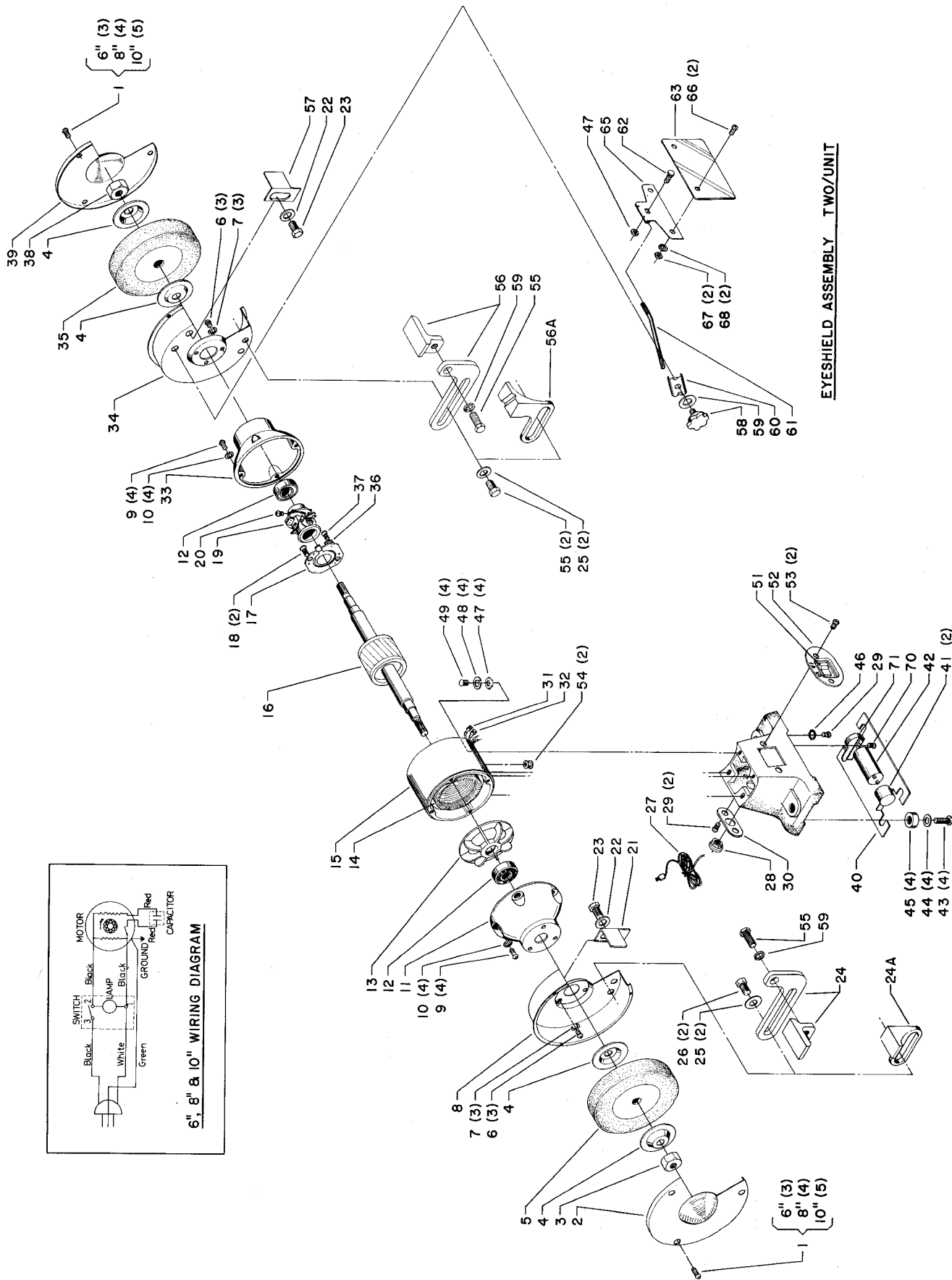


# 23-680 6" BENCH GRINDER (FOR UNITS W/SER No. P9015 & LOWER)

## 23-880 8" BENCH GRINDER 23-980 10" BENCH GRINDER

Part No 1320232

Revised 07-31-90



## REPLACEMENT PARTS

### 6" BENCH GRINDER

REF. NO.	PART NO.	DESCRIPTION
1	1320003	#10-24 X 1/4" Truss Hd. Screw
2	1320400	Cover
3	1320077	1/2-12 LH Nut
4	1320074	Flange
5	23-683	Grinder Wheel -A360, 6" X 3/4" X 1/2"
6	901-02-120-7547	#10-24 X 3/8" Truss Hd. Screw
7	904-02-020-1725	3/16" Lock Washer
8	1320203	Wheel Guard - Left
9	901-05-193-1196	#10-24 X 5/8" Truss Hd. Screw
10	904-02-020-1725	3/16" Spring Washer
11	1320204	End Bell - Left Side
12	1320105	Ball Bearing
13	1320205	Fan
14	1320206	Stator
15	1320207	Motor Housing
16	1320208	Rotor
17	1320115	Centrifugal Switch Terminal Board
18	901-02-120-7547	#10-24 X 3/8" Truss Hd. Screw
19	1320117	Centrifugal Start Switch
20	1320209	Centrifugal Start Switch Hd. Screw
21	1320209	M4.5 X .75 X 7mm Truss Hd. Screw
22	1320209	Spark Breaker - Left Side
23	1320209	M4.5 X .75 X 7mm Truss Hd. Cap Screw
24	1320209	Adjustable Tool Rest Assembly (Current Models Only)
25	904-01-010-1605	3/8" Flat Washer
26	901-01-060-0606	Adjustable Tool Rest - Left Side (Early Models Only)
27	1320125	5/16-18 X 5/8" Hex Hd. Cap Screw
28	1320130	Power Cord w/Plug
29	901-02-120-7547	Strain Relief
30	1320130	#10-24 X 3/8" Truss Hd. Screw
31	1320211	Cord Mounting Plate
32	1320135	Terminal
33	1320136	End Bell - Right Side
34	1320212	Wheel Guard - Right Side
35	23-684	Grinder Wheel -A460, 6" X 3/4" X 1/2"
36	1320102	M4 (.15") Ext. Tooth Lockwasher
37	1320102	#8-32 X 3/16" Truss Hd. Screw
38	1320078	1/2-12 RH Nut
39	1320200	Cover
40	1320216	Base Cover
41	1320141	Capacitor Cover
42	1320145	Capacitor
43	901-02-010-0525	#10-24 X 1/2" Rd. Hd. Screw
44	1320087	7/32 X 15/32 X 1/32" Washer
45	1320117	Rubber Pad
46	1320101	M5 (.19") Ext. Tooth Lockwasher
47	902-01-120-1034	1/4-20 Hex Nut
48	904-02-020-1702	1/4" Lockwasher
49	1320009	1/4-20 X 7/8" Truss Hd. Screw
50	1320216	Base
51	1320151	Switch
52	1320219	Switch Mounting Plate
53	1320019	#10-24 X 1/4" Truss Hd. Screw
54	1320135	1/2" Cord Protector
55	901-01-060-0607	Adjustable Tool Rest (Current Models Only)
56	1320220	Spark Breaker - Right Side
57	1320221	Knob w/5/16-18 X 3/4" Stud
58	931-02-113-1172	5/16" Lockwasher
59	904-02-010-1703	Eyesfield Mounting Rod
60	1320422	Eyesfield Mounting Rod
61	1320423	1/4-20 X 3/4" Sq. Neck Rd. Hd. Screw
62	901-11-020-0821	Eyesfield
63	1320424	Eyesfield
64	1320426	Eyesfield Frame
65	901-02-010-0525	#10-24 X 1/2" Rd. Hd. Screw
66	902-01-120-1216	#10-24 Hex Nut
67	1320087	7/32 X 15/32 X 1/32" Washer
68	901-02-120-7547	#10-24 X 3/8" Truss Hd. Screw
69	1320160	Capacitor Clamp
70	1320227	Warning Label
**	NOT SHOWN	

This parts list is provided to aid in obtaining service parts. Operational and maintenance information is contained in a separate owner's manual which is available through your local service outlet.

### 8" BENCH GRINDER

REF. NO.	PART NO.	DESCRIPTION
1	1320003	#10-24 X 1/4" Truss Hd. Screw
2	1320400	Cover
3	1320077	1/2-12 LH Nut
4	1320074	Flange
5	23-883	Grinder Wheel -A360, 8" X 3/4" X 5/8"
6	901-02-120-7547	#10-24 X 3/8" Truss Hd. Screw
7	904-02-020-1725	3/16" Lock Washer
8	1320203	Wheel Guard - Left
9	901-05-193-1196	#10-24 X 5/8" Truss Hd. Screw
10	904-02-020-1725	3/16" Spring Washer
11	1320204	End Bell - Left Side
12	1320106	Ball Bearing
13	1320405	Fan
14	1320406	Stator
15	1320407	Motor Housing
16	1320408	Rotor
17	1320115	Centrifugal Switch Terminal Board
18	901-02-120-7547	#10-24 X 3/8" Truss Hd. Screw
19	1320117	Centrifugal Start Switch
20	1320209	Centrifugal Start Switch Hd. Screw
21	1320209	M4.5 X .75 X 7mm Truss Hd. Screw
22	1320209	Spark Breaker - Left Side
23	901-01-060-0605	Adjustable Tool Rest (Current Models Only)
24	1320210	Adjustable Tool Rest - Left Side (Early Models Only)
25	904-01-010-1605	3/8" Flat Washer
26	901-01-060-0606	Adjustable Tool Rest - Left Side (Early Models Only)
27	1320126	5/16-18 X 5/8" Hex Hd. Cap Screw
28	1320130	Power Cord w/Plug
29	901-02-120-7547	Strain Relief
30	1320130	#10-24 X 3/8" Truss Hd. Screw
31	1320211	Cord Mounting Plate
32	1320135	Terminal
33	1320136	End Bell - Right Side
34	1320212	Wheel Guard - Right Side
35	23-884	Grinder Wheel -A460, 8" X 3/4" X 5/8"
36	1320102	M4 (.15") Ext. Tooth Lockwasher
37	1320102	#8-32 X 3/16" Truss Hd. Screw
38	1320078	1/2-12 RH Nut
39	1320400	Cover
40	1320416	Base Cover
41	1320141	Capacitor Cover
42	1320146	Capacitor
43	901-02-010-0525	#10-24 X 1/2" Rd. Hd. Screw
44	1320087	7/32 X 15/32 X 1/32" Washer
45	1320117	Rubber Pad
46	902-01-120-1034	1/4-20 Hex Nut
47	904-02-020-1702	1/4" Lockwasher
48	1320009	1/4-20 X 7/8" Truss Hd. Screw
49	1320135	Base
50	1320151	Switch
51	1320219	Switch Mounting Plate
52	1320019	#10-24 X 1/4" Truss Hd. Screw
53	1320135	1/2" Cord Protector
54	901-01-060-0607	Adjustable Tool Rest (Current Models Only)
55	1320220	Spark Breaker - Right Side
56	1320221	Knob w/5/16-18 X 3/4" Stud
57	931-02-113-1172	5/16" Lockwasher
58	904-02-010-1703	Eyesfield Mounting Rod
59	1320422	Eyesfield Mounting Rod
60	1320423	1/4-20 X 3/4" Sq. Neck Rd. Hd. Screw
61	901-11-020-0821	Eyesfield
62	1320424	Eyesfield
63	1320426	Eyesfield Frame
64	901-02-010-0525	#10-24 X 1/2" Rd. Hd. Screw
65	902-01-120-1216	#10-24 Hex Nut
66	1320087	7/32 X 15/32 X 1/32" Washer
67	901-02-120-7547	#10-24 X 3/8" Truss Hd. Screw
68	1320160	Capacitor Clamp
69	1320227	Warning Label
**	NOT SHOWN	

This parts list is provided to aid in obtaining service parts. Operational and maintenance information is contained in a separate owner's manual which is available through your local service outlet.

### 10" BENCH GRINDER

REF. NO.	PART NO.	DESCRIPTION
1	1320003	#10-24 X 1/4" Truss Hd. Screw
2	1320600	Cover
3	1320079	1/2-12 LH Nut
4	1320079	Flange
5	23-983	Grinder Wheel -A360, 10" X 1" X 1"
6	901-02-120-7547	#10-24 X 3/8" Truss Hd. Screw
7	904-02-020-1725	3/16" Lock Washer
8	1320203	Wheel Guard - Left
9	901-05-193-1196	#10-24 X 5/8" Truss Hd. Screw
10	904-02-020-1725	3/16" Spring Washer
11	1320204	End Bell - Left Side
12	1320110	Ball Bearing
13	1320805	Fan
14	1320806	Stator
15	1320807	Motor Housing
16	1320808	Rotor
17	1320116	Centrifugal Switch Terminal Board
18	901-02-120-7547	#10-24 X 3/8" Truss Hd. Screw
19	1320188	Centrifugal Start Switch
20	1320209	Centrifugal Start Switch Hd. Screw
21	1320209	M4.5 X .75 X 7mm Truss Hd. Screw
22	1320209	Spark Breaker - Left Side
23	901-01-060-0605	Adjustable Tool Rest (Current Models Only)
24	1320829	Adjustable Tool Rest - Left Side (Early Models Only)
25	904-01-010-1605	3/8" Flat Washer
26	901-01-060-0606	Adjustable Tool Rest - Left Side (Early Models Only)
27	1320126	5/16-18 X 5/8" Hex Hd. Cap Screw
28	1320130	Power Cord w/Plug
29	901-02-120-7547	Strain Relief
30	1320211	Cord Mounting Plate
31	1320135	Terminal
32	1320136	End Bell - Right Side
33	1320812	Wheel Guard - Right Side
34	23-984	Grinder Wheel -A460, 10" X 1" X 1"
35	1320102	M4 (.15") Ext. Tooth Lockwasher
36	1320102	#8-32 X 3/16" Truss Hd. Screw
37	1320080	1-8 RH Nut
38	1320800	Cover
39	1320816	Base Cover
40	1320142	Capacitor Cover
41	1320147	Capacitor
42	1320101	M5 (.19") Ext. Tooth Lockwasher
43	902-01-120-1034	1/4-20 Hex Nut
44	904-02-020-1702	1/4" Lockwasher
45	1320009	1/4-20 X 7/8" Truss Hd. Screw
46	1320135	Base
47	1320151	Switch
48	1320219	Switch Mounting Plate
49	1320019	#10-24 X 1/4" Truss Hd. Screw
50	1320135	1/2" Cord Protector
51	901-01-060-0607	Adjustable Tool Rest (Current Models Only)
52	1320220	Spark Breaker - Right Side
53	1320221	Knob w/5/16-18 X 3/4" Stud
54	931-02-113-1172	5/16" Lockwasher
55	904-02-010-1703	Eyesfield Mounting Rod
56	1320822	Eyesfield Mounting Rod
57	901-11-020-0821	Eyesfield
58	1320826	Eyesfield Frame
59	901-02-010-0525	#10-24 X 1/2" Rd. Hd. Screw
60	902-01-120-1216	#10-24 Hex Nut
61	1320087	7/32 X 15/32 X 1/32" Washer
62	901-02-120-7547	#10-24 X 3/8" Truss Hd. Screw
63	1320160	Capacitor Clamp
64	1320227	Warning Label
**	NOT SHOWN	

This parts list is provided to aid in obtaining service parts. Operational and maintenance information is contained in a separate owner's manual which is available through your local service outlet.