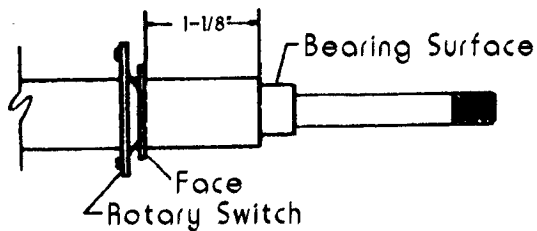


REPLACEMENT PARTS

REF NO	PART NUMBER	DESCRIPTION	REF NO	PART NUMBER	DESCRIPTION
1	412-07-031-5001	GUARD COVER	27	412-07-014-5001	TOOL REST ARM
2	901-05-163-1126	#08-32 X 5/16" PAN HD SCREW	28	902-01-010-1300	5/16-18 HEX NUT
3	902-01-200-5439	1/2-20 HEX NUT - L H	29	904-01-010-1605	3/8" FLAT WASHER
4	412-07-103-5001	WHEEL FLANGE	30	902-01-120-1216	#10-24 HEX NUT
5	901-01-060-0612	1/4-20 X 5/8" HEX HD SCREW	31	438-01-017-0146	STATIONERY SWITCH
6	412-07-089-5001	TOOL REST L H	32	901-06-131-7359	#06-32 X 1/4" PAN HD SCREW
7	412-07-054-5001	GUARD	33	438-01-017-0145	ROTARY SWITCH (See Service Note A)
8	901-11-020-0819	1/4-20 X 1 1/4" CARRIAGE HD SCREW	34	438-02-035-0002	ROTOR (See Service Note A)
9	412-07-036-5001	SPARK BREAKER - L H	35	412-00-752-0001	WARNING LABEL
10	412-07-079-5001	EYESHIELD CLIP	36	438-02-036-0001	STATOR
11	904-03-020-1667	1/4" INT TOOTH WASHER	37	920-04-020-5384	BALL BEARING
12	902-04-010-1402	1/4-20 WING NUT	38	412-07-116-5001	BEARING FELT
13	412-07-054-5002	EYESHIELD, INCL:	39	412-07-020-5001	END BELL
14	901-11-023-1260	#10-24 X 5/8" CARRIAGE HD SCREW	40	412-07-112-5001	TIE BOLT
15	904-03-030-1795	3/16" EXT TOOTH WASHER	41	412-07-005-5001	BASE
16	902-01-120-1216	#10-24 HEX NUT	42	438-01-021-0044	ON/OFF PLATE
17	412-07-014-5002	EYESHIELD BRACKET	43	438-01-628-0005	SWITCH ASSY
18	412-07-036-5002	SPARK BREAKER - R H	44	901-01-060-0611	1/4-20 X 1/2" HEX HD SCREW
19	412-07-103-5001	WHEEL FLANGE	45	901-02-010-0555	#08-32 X 3/8" ROUND HD SCREW
20	902-01-010-1208	1/2-20 HEX NUT - R H	46	412-07-072-5001	BASE PLATE
21	901-01-060-0607	5/16-18 X 3/4" HEX HD SCREW	47	412-07-048-5001	RUBBER FOOT
22	904-03-020-1750	5/16" INT TOOTH WASHER	48	438-01-302-0004	POWER CORD
23	412-07-089-5002	TOOL REST R H	49	438-01-004-0062	HEYCO BUSHING 5/8"
24	901-11-020-0821	1/4-20 X 3/4" CARRIAGE HD SCREW	50	904-03-020-1654	INT TOOTH WASHER
25	904-01-010-1604	5/16" FLAT WASHER	51	901-06-131-7359	#06-32 X 1/4" PAN HD SCREW
26	902-04-010-1402	1/4-20 WING NUT			

SERVICE NOTE:

A - Replacement of the rotary switch should be done as per the illustration below. Although the face of the switch may be slightly crooked this will not affect the operation of the unit as long as the face makes contact with the stationary switch. A visual check for contact can be made at the time of assembly to assure proper function.



DISTANCE FROM FACE OF ROTARY SWITCH TO BEARING SHOULDER

STANDARD SAFETY EQUIPMENT

In order to promote tool safety, Delta International Machinery Corp. strictly enforces the policy of repairing or replacing any damaged or missing standard safety equipment on machines presented to Delta Authorized Service Center for service/repairs. Any product which is presented to a Delta Authorized Service Center for repairs which contains missing or damaged standard safety equipment will have that equipment repaired or replaced and the customer will be charged for any such service/repairs. Customers can avoid such charges only if the missing safety component is supplied to the service center at the time of repair.

This parts list is provided to aid in obtaining service parts. Copies of the instruction and maintenance literature can be obtained through the Delta Technical Publications Department or through your local service outlet.