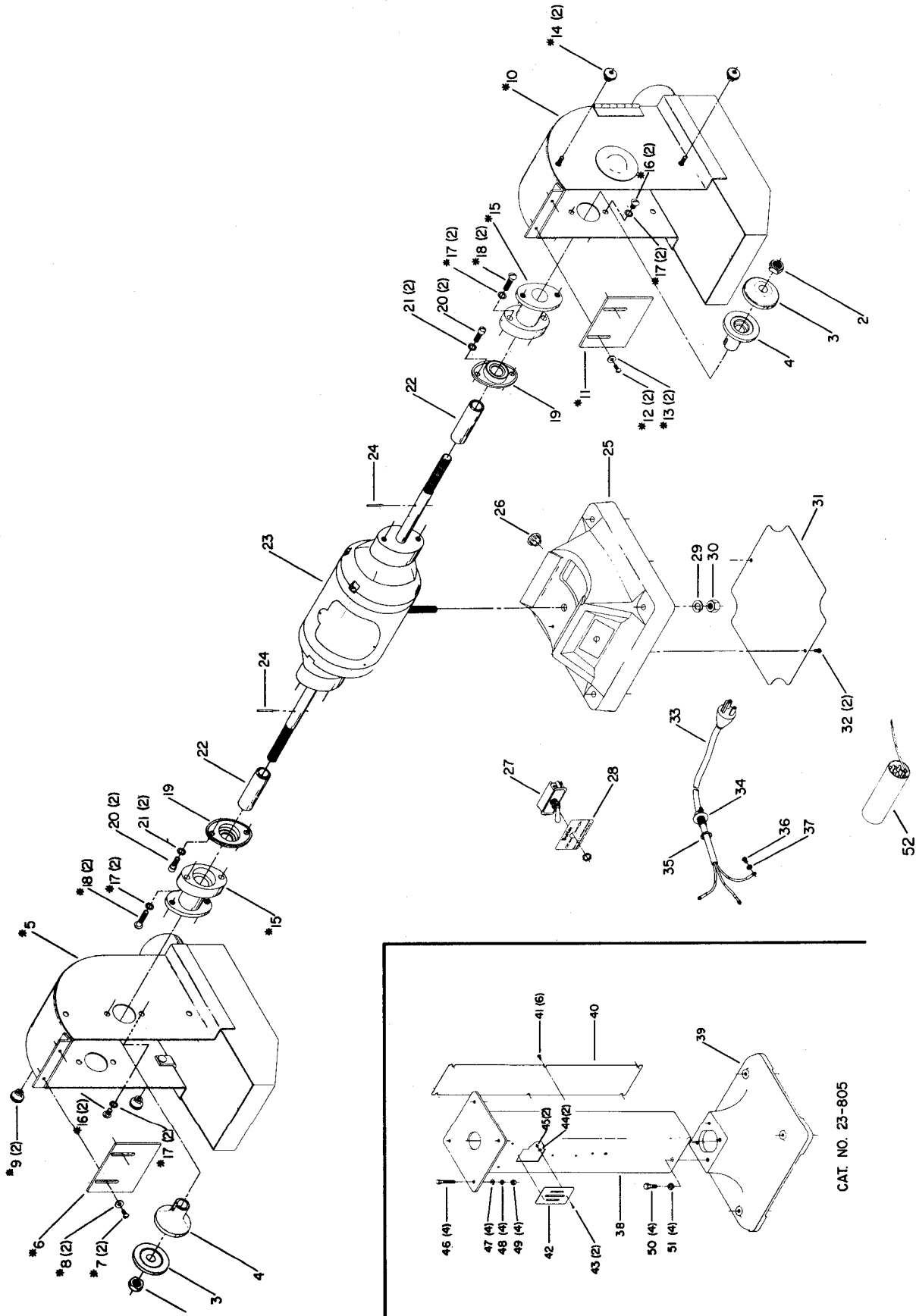




23-233, 23-234, 23-239, 23-241,
23-242, 23-243, 23-249, 23-251,
23-261, 23-262, 23-263, 23-268
1/2 HP LONG-SHAFT BUFFER

G-3C
440-03-651-0001
Revised 10-15-85



*NOT INCLUDED WITH BASIC MACHINE

CAT. NO. 23-805

Replacement Parts

Ref. No.	Part No.	Description	Ref. No.	Part No.	Description
1	902-01-200-9848	Special Nut	31	412-01-031-5006	Cover
2	902-01-201-2571	Special Jam Nut	32	901-02-010-0551	#10-32 X 1/4" Rd. Hd. Mach. Scr.
3	1201295	Flange	33	1201141	Cable Ass'y.
4	412-01-103-5005	Flange	34	438-01-004-0043	Clamp
*	23-281	Buffer Guards, Const. Of:	35	438-01-009-0001	1/2" Conduit Locknut
5	1202933	Buffer Guard (left side) Incl:	36	901-02-010-0548	#10-32 X 1/4" Brass Rd. Hd. Scr.
6	1202939	Deflector	37	904-03-020-1775	#1210-00 Shak. Lockwasher
7	901-02-010-0561	#10-32 X 3/8" Rd. Hd. Mach. Scr.	*	23-805	Pedestal, Const. Of:
8	904-01-010-1603	#10 Washer	38	1201879	Pedestal
9	902-04-020-1418	Nut	39	412-01-005-5002	Base
10	1202935	Buffer Guard (right side), Incl:	40	1201928	Cover
11	1202939	Deflector	41	901-02-010-0509	1/4-20 X 1/2" Rd.Hd. Mach. Scr.
12	901-02-010-0561	#10-32 X 3/8" Rd. Hd. Mach. Scr.	42	402-04-031-5002	Cover
13	904-01-010-1603	#10 Washer	43	901-02-010-0553	#6-32 X 1/2" Rd. H. Mach. Sch.
14	902-04-020-1418	Nut	44	904-01-010-1602	3/16" Washer
15	1202938	Guard	45	902-01-120-9232	Nut
16	901-02-010-0520	5/16-18 X 3/8" Rd. Hd. Mach. Scr.	46	901-01-060-0635	5/16-18 X 2" Hex Hd. Cap Scr.
17	904-03-030-1656	5/16" Ext. Tooth Lockwasher	47	904-01-010-1620	11/32 X 11/16 X 1/16" Washer
18	901-01-060-0649	5/16-18 X 1" Hex Hd. Cap Scr.	48	904-02-010-1703	5/16" Lockwasher
19	412-01-379-5001	Bearing Seal	49	902-01-010-1300	5/16-18" Nut
20	901-02-050-0704	5/16-18 X 5/8" Fil. Hd. Cap Scr.	50	901-01-060-0628	1/2-13 X 1" Hex Hd. Cap Scr.
21	904-03-050-1752	5/16" Int. Tooth Lockwasher	51	904-02-020-1705	1/2" Lockwasher
22	412-01-104-5004	Spacer	52	438-01-029-0005	Capacitor for Single Phase (161-192 M.F.D. 110/115 VAC)
23		Motor (See A)			
24	905-01-010-2719	1/8 X 1" Roll Pin			
25	412-01-005-5005	Base	*	Not Included with Basic Machine	
26	961-01-010-7460	Plug			
27	1225378	Switch			
28	438-01-021-0078	Plate			
29	904-02-010-1716	7/16" Lockwasher			
30	902-01-010-1232	7/16-20" Hex Nut (Incl. w/Motor)	A -	For exact motor replacement see motor nameplate.	

SERVICE NOTES: