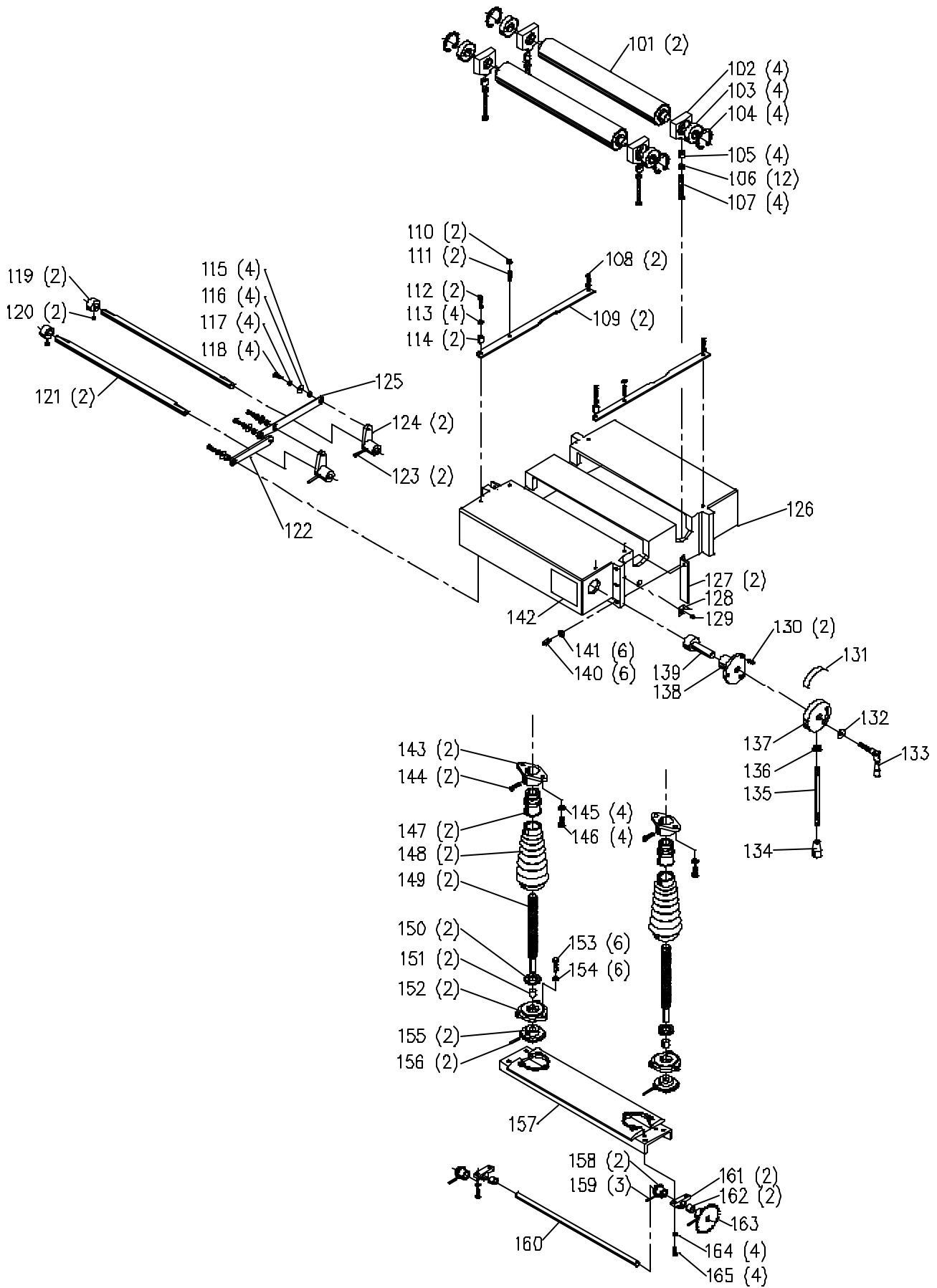


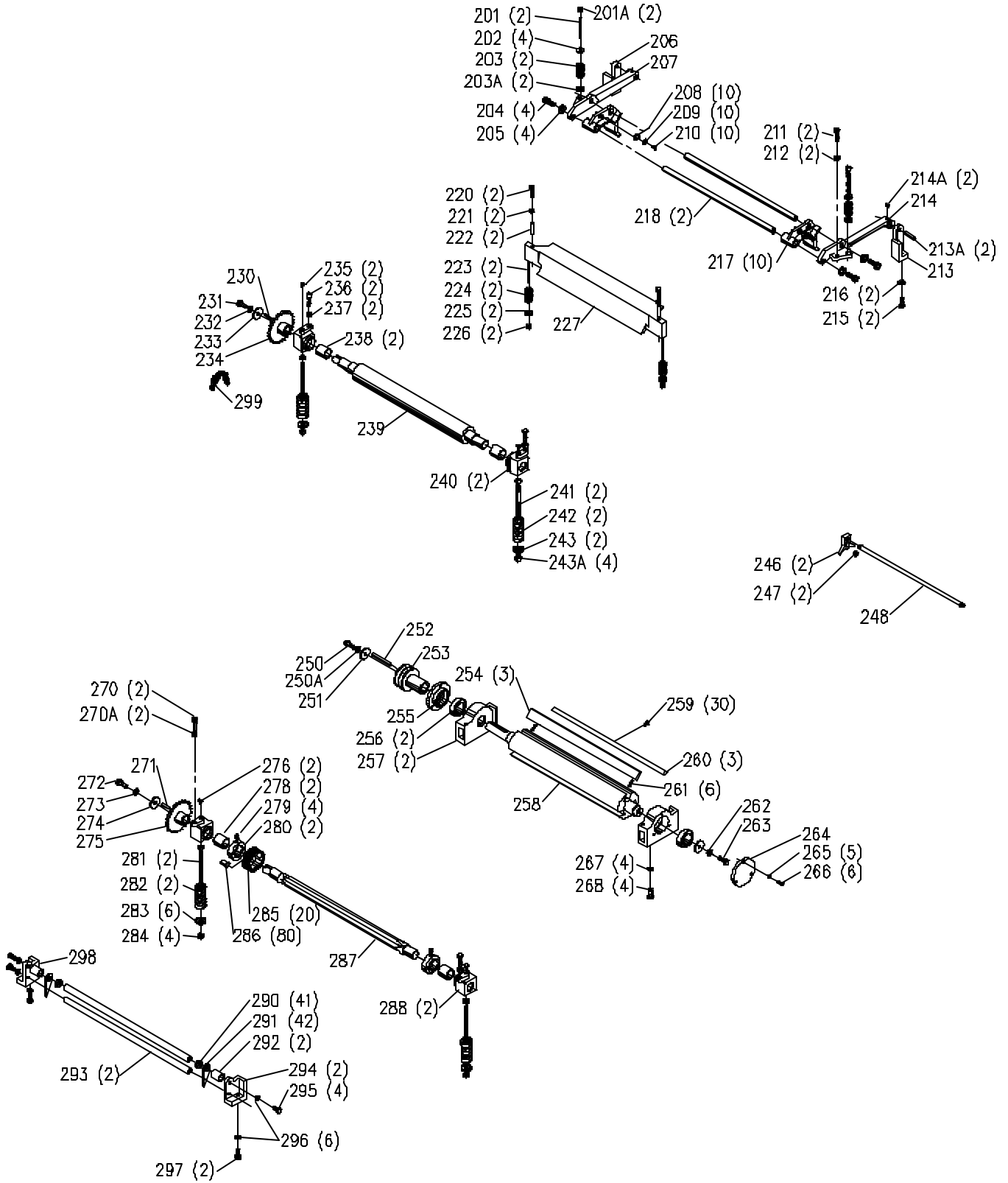
REPLACEMENT PARTS

Ref.			Ref.		
No.	Part No.	Description	No.	Part No.	Description
1	1349679	DUST HOOD	38	1349538	M6 HEX HD SCREW
2	1349680	DUST CHUTE, INCL;	38A	1340608	M6.4 FLAT WASHER
2A	1349977	WARNING LABEL	39	1349564	CHAIN
3	1345859	M6 X 12MM BUTTON HD SCREW	39*	1349573	MASTER LINK
6	1349537	M8 X 160MM HEX SOC HD SCREW	40	1349557	SPROCKET SHAFT
7	1349676	TOP COVER, INCL;	41	1349558	HUB
7A	1349982	WARNING LABEL	42	1349559	OIL CUP
7B	1349979	ENGAGE LABEL	43	1243336	M6 X 20MM HEX SOC HD SCREW
7C	1349976	NAMEPLATE	43A	1340654	M6.4 FLAT WASHER
11	1349693	BAFFLE SEAL	44	1243517	M21 FLAT WASHER
12	1349681	CHIP DEFLECTOR	45	901-04-150-1111	3/8-16 X 3/8" HEX SOC SET SCREW
13	1349692	SEAL	46	1349560	HANDWHEEL
14	1349678	UPPER BRACKET	47	1349562	KNOB
15	1246032	M8 X 50MM HEX HD SCREW	48	1349563	LEVER
16	1246017	M8 X 30MM HEX HD SCREW	50	1345934	M6 X 12MM BUTTON HD SCREW
17	1246157	M8.1 LOCK WASHER	51	1349684	RIGHT COVER
18	1243398	M8 HEX NUT	52	1349685	RIGHT BASE COVER
19	1349677	LOWER BRACKET	52A	1345859	M6 X 12MM BUTTON HD SCREW
20	1349682	LEFT COVER, INCL;	53	1341046	M6 X 8MM CHEESE HD SCREW
20A	1349975	FEED RATE CHART	54	1349850	COIL 440V (EMO)
21	1349674	SWITCH BOX	54A	1348239	CONTACTOR ASSY, 440V (CMO)
22	402-07-111-5002	STUD	55	1349675	STRAIN RELIEF CLAMP
23	438-01-017-0101	MAGNETIC SWITCH	56	1349849	CONTACTOR 3PH
24	402-07-104-5007	SPACER	57	1349694	CONTACTOR 1PH
25	901-02-010-0567	#06-32 X 1/4" ROUND HD SCREW	58	1243496	M10 HEX NUT
26	1340100	SWITCH COVER ASSY	59	1347719	JUNCTION BOX
27	1349541	LH COLUMN BASE	60	1347720	TERMINAL STRIP
28	1243476	M12 HEX NUT	61	1243394	M5 X 10MM CHEESE HD SCREW
29	1246065	M12.2 LOCK WASHER	62	1246001	M5 X 12MM CHEESE HD SCREW
30	1349978	DEPTH SCALE	63	1243394	M5 X 10MM CHEESE HD SCREW
31	1349689	LIFT BOSS	64	1320101	M5.3 EXT TOOTH WASHER
32	1349688	WASHER	65	1349540	BASE
33	1349539	M12 X 60MM HEX SOC HD SCREW	66	1349683	HANDLE ASSY
34	1349542	RH COLUMN BASE	67	1349686	LEFT BASE COVER
35	1246035	M10 X 30MM HEX HD SCREW	**		NOT SHOWN
36	1243360	M10.2 LOCK WASHER			EMO=EARLY MODELS ONLY
37	1349687	REAR COVER			CMO=CURRENT MODELS



REPLACEMENT PARTS

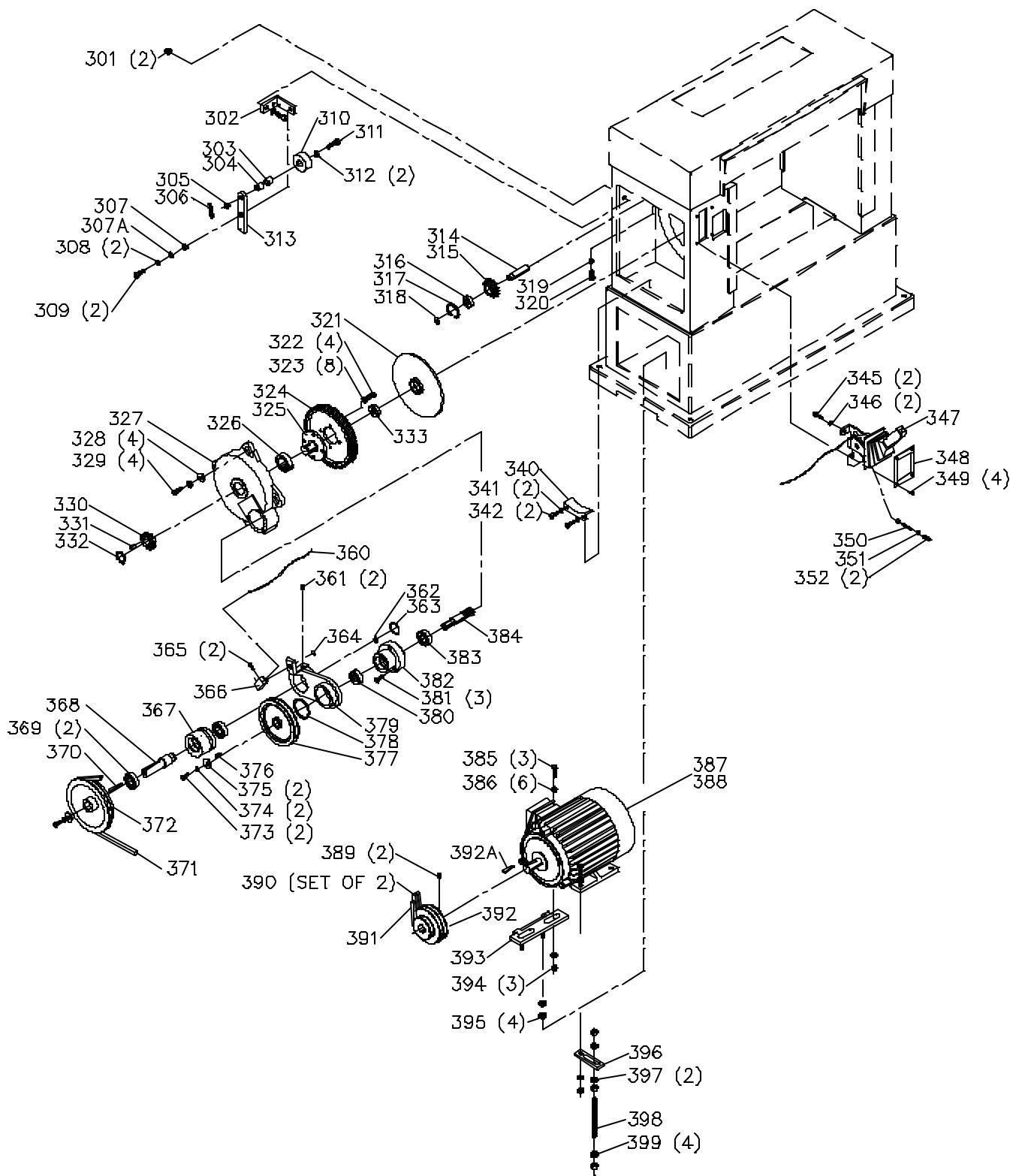
Ref.			Ref.		
<u>No.</u>	<u>Part No.</u>	<u>Description</u>	<u>No.</u>	<u>Part No.</u>	<u>Description</u>
101	1349577	ROLLER	134	1349590	KNOB
102	1349578	SUPPORT	135	1349589	LEVER
103	920-04-022-4020	BALL BEARING	136	1243476	M12 HEX NUT
104	1246190	INT RET RING	137	1349588	HUB
105	1349579	COLLAR	138	1349586	SUPPORT
106	1243398	M8 HEX NUT	139	1349587	SHAFT
107	1349529	M8 X 75MM HEX HD SCREW	140	1243319	M10 X 30MM HEX SOC SET SCREW
108	1246034	M8 X 20MM HEX HD SCREW	141	1243496	M10 HEX NUT
109	1349574	GUIDE	142	1349983	ADJUSTMENT LABEL
110	1243398	M8 HEX NUT	143	1349550	SUPPORT
111	1246053	M8 X 25MM HEX SOC HD SCREW	144	1246016	M8 X 25MM HEX HD SCREW
112	1246079	M8 X 40MM HEX HD SCREW	145	1243502	M10 FLAT WASHER
113	1246157	M8.1 LOCK WASHER	146	1246018	M10 X 25MM HEX HD SCREW
114	1349575	COLLAR	147	1349548	COLLAR
115	1349585	ADAPTER	148	1349549	BOOT
116	1344330	M8 FLAT WASHER	149	1349546	ELEVATING SCREW
117	1246157	M8.1 LOCK WASHER	150	1349545	THRUST BEARING
118	1246034	M8 X 20MM HEX HD SCREW	151	1349544	BEARING
119	1349582	BUSHING	152	1349543	SUPPORT
120	1341011	M8 X 10MM HEX SOC SET SCREW	153	1246016	M8 X 25MM HEX HD SCREW
121	1349581	ROD	154	1246157	M8.1 LOCK WASHER
122	1349584	LINK (SHORT)	155	1349547	GEAR
123	1246185	M5 X 40MM SPRING PIN	156	1246185	M5 X 40MM SPRING PIN
124	1349580	ARM	157	1349551	PLATE
125	1349583	LINK (LONG)	158	1349555	GEAR
126	1349571	TABLE	159	1246160	M5 X 32MM SPRING PIN
127	1349572	TABLE GUIDE	160	1349554	SHAFT
128	1349576	POINTER	161	1349552	SUPPORT
129	1243394	M5 X 10MM CHEESE HD SCREW	162	1349553	BEARING
130	1246056	M6 X 12MM HEX SOC HD SCREW	163	1349556	SPROCKET
131	1349980	DIRECTION ARROW	164	1246157	M8.1 LOCK WASHER
132	1243502	M10 FLAT WASHER	165	1246016	M8 X 25MM HEX HD SCREW
133	1349591	LOCK LEVER			



REPLACEMENT PARTS

Ref.			Ref.		
No.	Part No.	Description	No.	Part No.	Description
201	1349632	STUD	*	1349620	CUTTERHEAD ASSY, CONST OF;
201A	1243496	M10 HEX NUT	250	1349531	M10 X 25MM HEX HD SCREW
202	1349630	SPECIAL WASHER	250A	1243360	M10.2 LOCK WASHER
203	1349631	SPRING	251	1349597	WASHER
203A	1349635	SPECIAL WASHER	252	1349530	95MM KEY
204	1246073	M12 X 30MM HEX SOC HD SCREW	253	1349596	PULLEY
205	1246179	M12.2 LOCK WASHER	254	22-452	20IN HSS PLANER KNI
206	1349623	BRACKET LH	255	1349594	LH COVER
207	1349627	SUPPORT LH	256	920-04-021-6559	BALL BEARING
208	1349626	SPRING	257	1349593	SUPPORT
209	1340622	M6.4 FLAT WASHER	258	1349592	CUTTERHEAD
210	1246014	M6 X 15MM HEX HD SCREW	259	1349600	LOCKING SCREW
211	1246096	M10 X 40MM HEX SOC HD SCREW	260	1349599	LOCKING BAR
212	1243496	M10 HEX NUT	261	1349598	SPRING
213	1349619	BRACKET RH	262	1243360	M10.2 LOCK WASHER
213A	1349628	PIN	263	1246018	M10 X 25MM HEX HD SCREW
214	1349661	SUPPORT RH	264	1349595	RH COVER
214A	1341011	M8 X 10MM HEX SOC SET SCREW	265	1243520	M6.1 LOCK WASHER
215	1246035	M10 X 30MM HEX HD SCREW	266	1246015	M6 X 20MM HEX HD SCREW
216	1349624	RETAINER	267	1243360	M10.2 LOCK WASHER
217	1349625	CHIP BREAKER	268	1246035	M10 X 30MM HEX HD SCREW
218	1349629	SHAFT	270	1246096	M10 X 40MM HEX SOC HD SCREW
220	1246079	M8 X 40MM HEX HD SCREW	270A	1243496	M10 HEX NUT
221	1243398	M8 HEX NUT	271	1341952	25MM KEY
222	1349637	PIN	272	1349531	M10 X 25MM HEX HD SCREW
223	1349634	STUD	273	1243360	M10.2 LOCK WASHER
224	1349636	SPRING	274	1349611	WASHER
225	1349635	SPECIAL WASHER	275	1349610	SPROCKET
226	1243496	M10 HEX NUT	276	1349559	OIL CUP
227	1349633	PRESSURE BAR	278	1349609	BEARING
230	1341952	25MM KEY	279	1330200	M8 X 12MM HEX SOC SET SCREW
231	1349531	M10 X 25MM HEX HD SCREW	280	1349607	BUSHING
232	1243360	M10.2 LOCK WASHER	281	1349612	STUD (125 MM)
233	1349611	WASHER	282	1349613	SPRING
234	1349618	SPROCKET	283	1349614	SPECIAL WASHER
235	1349559	OIL CUP	284	1243496	M10 HEX NUT
236	1246096	M10 X 40MM HEX SOC HD SCREW	285	1349604	GEAR WHEEL
237	1243496	M10 HEX NUT	286	1349606	BUSHING (SET OF 4)
238	1349617	BEARING	287	1349603	INFEEED SHAFT
239	1349615	OUTFEED ROLLER	288	1349608	BEARING BLOCK
240	1349616	BEARING BLOCK	290	1349640	BUSHING
241	1349892	STUD (105 MM)	291	1349639	FINGER
242	1349613	SPRING	292	1349642	BUSHING
243	1349614	SPECIAL WASHER	293	1349641	ROD
243A	1243496	M10 HEX NUT	294	1349638	BRACKET RH
*	1349605	KNIFE GAGE ASSY, CONST OF;	295	1246018	M10 X 25MM HEX HD SCREW
246	1349601	KNIFE BLOCK	296	1243360	M10.2 LOCK WASHER
247	1330670	EXT RET RING	297	1246035	M10 X 30MM HEX HD SCREW
248	1349602	ROD	298	1349621	BRACKET LH
			299	n 901828	Chain

* NOT SHOWN ASSEMBLED



REPLACEMENT PARTS

Ref.			Ref.		
No.	Part No.	Description	No.	Part No.	Description
301	1341996	M10 LOCK NUT	352	1243456	M6 HEX NUT
302	1349671	LINK SUPPORT	360	1349659	CABLE
303	1349668	BEARING	361	1243494	M10 X 12MM HEX SOC SET SCREW
304	1349669	BUSHING	362	1341161	EXT RET RING
305	1243496	M10 HEX NUT	363	1246190	INT RET RING
306	1349673	SPRING	364	1245115	EXT RET RING
307	1349672	BUSHING	365	1246004	M6 X 16MM HEX SOC HD SCREW
307A	1243502	M10 FLAT WASHER	366	1349658	CLAMP BLOCK
308	1243360	M10.2 LOCK WASHER	367	1349655	HOUSING
309	1246018	M10 X 25MM HEX HD SCREW	368	1349654	PULLEY SHAFT
310	1349667	WHEEL	369	920-04-020-5360	BALL BEARING
311	1246029	M10 X 40MM HEX HD SCREW	370	1349534	65MM KEY
312	1243502	M10 FLAT WASHER	371	1349657	BELT (A-24)
313	1349670	LINK	372	1349656	PULLEY
314	1349666	SHAFT	373	1246054	M8 X 20MM HEX SOC HD SCREW
315	1349665	CHAIN GEAR	374	1246157	M8.1 LOCK WASHER
316	1086894	BALL BEARING	375	1349652	RETAINER
317	1246003	INT RET RING	376	1330139	20MM KEY
318	1243407	EXT RET RING	377	1349651	PULLEY
319	1243496	M10 HEX NUT	378	1349533	EXT RET RING
320	1246018	M10 X 25MM HEX HD SCREW	379	1349653	BRACKET
321	1349647	GEAR HOUSING PLATE	380	1320106	BALL BEARING
322	1246115	M10 X 20MM HEX HD SCREW	381	1243530	M8 X 30MM HEX SOC HD SCREW
323	1243360	M10.2 LOCK WASHER	382	1349650	HOUSING
324	1349643	GEAR	383	920-04-020-5360	BALL BEARING
325	1349644	GEAR SHAFT	384	1349649	PINION GEAR
326	920-04-022-4022	BALL BEARING	385	1246035	M10 X 30MM HEX HD SCREW
327	1349646	GEAR HOUSING	386	1243360	M10.2 LOCK WASHER
328	1243502	M10 FLAT WASHER	387	1349565	MOTOR 3PH 5HP
329	1246035	M10 X 30MM HEX HD SCREW	388	1349566	MOTOR 1PH 5HP
330	1349648	SPROCKET	389	1243494	M10 X 12MM HEX SOC SET SCREW
331	1349532	20MM KEY	390	1349690	BELT (A-71) SET
332	1243370	EXT RET RING	391	1349691	BELT (A-40)
333	920-04-020-5335	BALL BEARING	392	1349567	MOTOR PULLEY
340	1349660	BRAKE	392A	1347704	40MM KEY
341	1246157	M8.1 LOCK WASHER	393	1349568	MOTOR BRACKET
342	1246122	M8 X 16MM HEX SOC HD SCREW	394	1243496	M10 HEX NUT
345	1246054	M8 X 20MM HEX SOC HD SCREW	395	1243476	M12 HEX NUT
346	1246157	M8.1 LOCK WASHER	396	1349569	BRACKET
347	1349662	BRAKE LEVER ASSY	397	1341945	M12 FLAT WASHER
348	1349664	BEZEL	398	1349570	ADJ SCREW
349	1243394	M5 X 10MM CHEESE HD SCREW	399	1243476	M12 HEX NUT
350	1349663	STUD	*	1349998	10 X 14MM OPEN END WRENCH
351	1340622	M6.4 FLAT WASHER	*	1344741	4MM T HANDLE WRENCH
			**	NOT SHOWN	

STANDARD SAFETY EQUIPMENT

In order to promote tool safety, Delta Machinery strictly enforces the policy of repairing or replacing any damaged or missing standard safety equipment on machines presented to Delta Authorized Service Centers for service/repairs. Any product that is presented to a Delta Authorized Service Centers for repairs which contains missing or damaged standard safety equipment will have that equipment repaired or replaced and the customer will be charged for any such service/repairs. Customers can avoid such charges only if the missing safety component is supplied to the service center at the time of repair.

This parts list is provided to aid in obtaining service parts. Copies of the instruction and maintenance literature can be obtained through the Delta Technical Publications Department or through your service outlet.