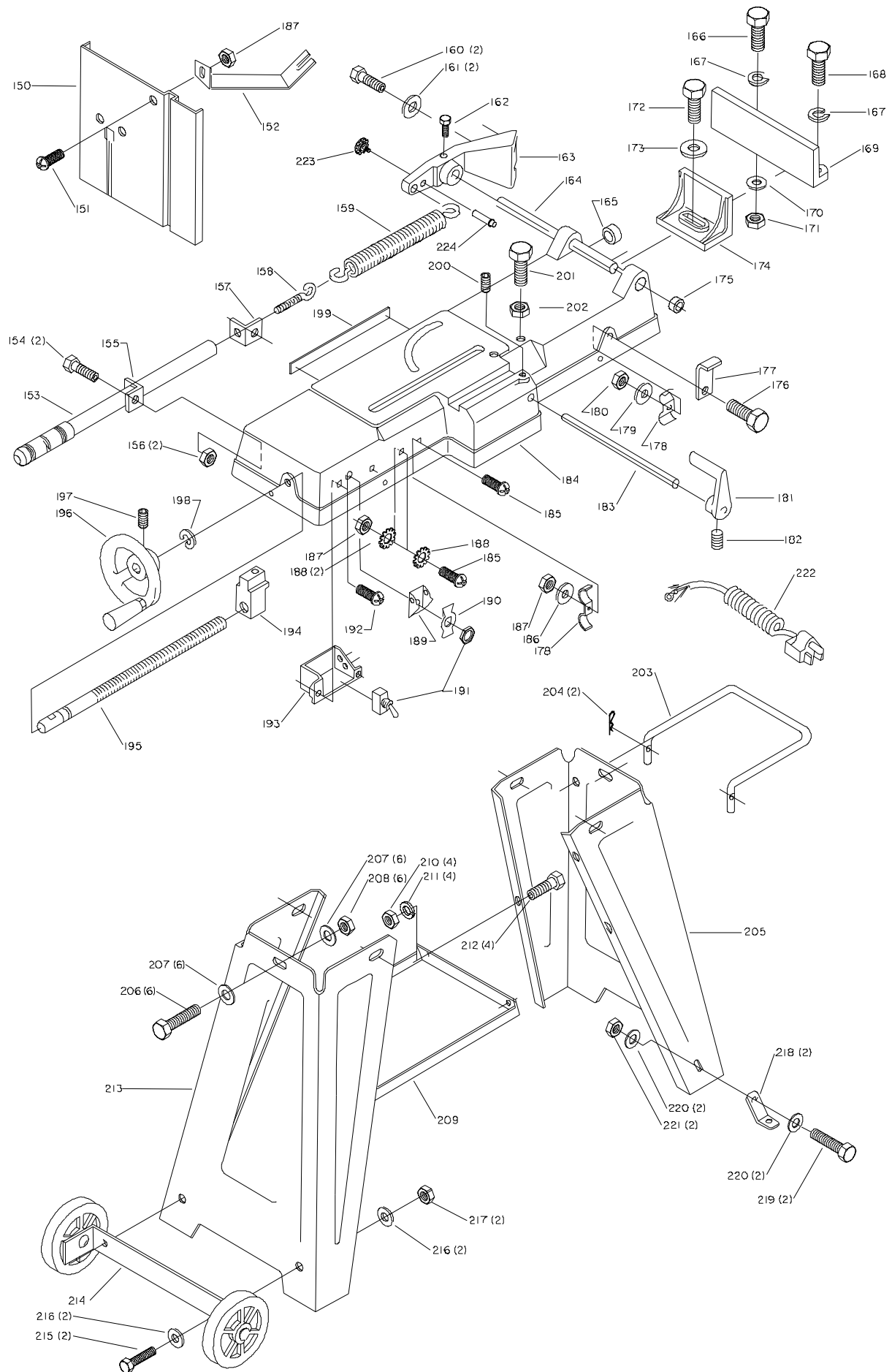


# REPLACEMENT PARTS

Ref.			Ref.		
<u>No.</u>	<u>Part No.</u>	<u>Description</u>	<u>No.</u>	<u>Part No.</u>	<u>Description</u>
1	1340805	GUARD PLATE & PULLEY GUARD	51	904-01-010-1604	1/4" FLAT WASHER
2	1340847	SPEED CHART	52	901-01-060-0611	1/4-20 X 1/2" HEX HD CAP SCREW
3	904-01-010-1604	1/4" FLAT WASHER	53	1340713	JUMPER WIRE (SWITCH TO MOTOR)
4	901-01-060-0611	1/4-20 X 1/2" HEX HD CAP SCREW	54	1340829	WIRE NUT
5	1340842	WORM GEAR PULLEY ASSEMBLY, INCL:	55	1340783	BEARING
6	901-04-150-940	5/16-18 X 3/4" HEX SOC SET SCREW	56	1340785	OIL SEAL
7	1340806	V-BELT	57	1340784	SPACER
8	1340794	SPACER	58	1340767	BEARING RETAINER
9	1340767	BEARING RETAINER	59	1340812	DRIVE SPACER
10	901-02-030-0466	#08-32 X 3/8" FIL HD MACH SCREW	60	1340836	DRIVE WHEEL ASSEMBLY, INCL:
11	1340783	BEARING	61	901-04-150-020	5/16-18 X 5/16" HEX SOC SET SCREW
12	1340792	BEARING RETAINER	62	1340811	IDLER SPACER
13	1340790	WORM GEAR	63	n 1246145	RETAINING RING
14	901-01-060-0611	1/4-20 X 1/2" HEX HD CAP SCREW	64	1340817	SPACER
15	904-02-020-1702	1/4" LOCK WASHER	65	1340772	IDLER WHEEL
16	1340789	GEAR BOX COVER	66	1340744	WASHER
17	902791	WARNING LABEL, T2	67	901-01-060-0607	5/16-18 X 3/4" HEX HD CAP SCREW
	426-06-752-0004	WARNING LABEL, T1	68	902330	BEARING GUIDE LOCK KNOB, T2
18	1340788	GEAR BOX GASKET		1340761	BEARING GUIDE LOCK KNOB, T1
19	901-01-060-0616	1/2-13 X 1 1/2" HEX HD CAP SCREW	69	904-01-010-1606	3/8" FLAT WASHER
20	1340840	MOTOR PULLEY ASSEMBLY, INCL:	70	904803	ADJUSTABLE BRACKET (IDLER), T2
21	901-04-150-0205	5/16-18 X 1/4" HEX SOC SET SCREW		1340750	ADJUSTABLE BRACKET (IDLER), T1
22	1340781	MOTOR	71	1340797	SPECIAL WASHER
23	1340769	KEY	72	901-01-060-0649	5/16-18 X 1" HEX HD CAP SCREW
24	901-01-060-0607	5/16-18 X 3/4" HEX HD CAP SCREW	73	1340837	BEAR GUIDE ASSEMBLY, (IDLER), INCL:
25	904-01-010-1605	5/16" FLAT WASHER	74	1340757	PIN
26	902-01-010-1300	5/16-18 HEX NUT	75	902-01-010-120	3/8-24 HEX NUT
27	901-01-060-0609	5/16-18 X 1 1/2" HEX HD CAP SCREW	76	904-02-020-170	3/8" LOCK WASHER
28	902-01-010-1300	5/16-18 HEX NUT	77	1340754	BEARING
29	1340780	MOTOR MOUNTING PLATE	78	1340756	ECCENTRIC BEARING STUD
30	902-01-120-1034	1/4-20 HEX NUT	79	1340755	BEARING STUD
31	901-01-060-0623	1/4-20 X 1" HEX HD CAP SCREW	80	n 1320166	RETAINING RING
32	1340841	DRIVE SHAFT ASSEMBLY, INCL:	81	904804	ADJUSTABLE BRACKET (DRIVE), T2
33	1340791	PIN		1340760	ADJUSTABLE BRACKET (DRIVE), T1
34	1340768	KEY	82	1340838	EARING GUIDE ASSEMBLY, (DRIVE), INCL:
35	902329	FRAME, T2	83	1340754	BEARING
	1340775	FRAME, T1	84	1340757	PIN
36	902785	NAMEPLATE, T2	85	902-01-010-120	3/8-24 HEX NUT
	1340845	NAMEPLATE, T1	86	904-02-020-170	3/8" LOCK WASHER
37	901-01-060-0611	1/4-20 X 1/2" HEX HD CAP SCREW	87	901-03-030-076	1/4-20 X 1/2" HEX SOC FLAT HD SCREW
38	1340804	BLADE TENSION GUIDE	88	1340764	DEFLECTOR
39	901-01-060-0607	5/16-18 X 3/4" HEX HD CAP SCREW	89	1340756	ECCENTRIC BEARING STUD
40	901-01-060-0602	5/16-18 X 1 1/4" HEX HD CAP SCREW	90	1340755	BEARING STUD
41	1340744	WASHER	91	n 1320166	RETAINING RING
42	901-04-150-9402	5/16-18 X 3/4" HEX SOC SET SCREW	92	1340819	BLADE GUARD (DRIVE)
43	1340798	SLIDING BLOCK	93	901-02-030-0466	#08-32 X 3/8" FIL HD MACH SCREW
44	1340843	IDLER SHAFT ASSEMBLY, INCL:	94	1340820	BLADE GUARD (IDLER)
45	1340800	PIN	95	1340751	LOCK KNOB
46	1340803	SHAFT BLOCK	96	904-01-010-1604	1/4" FLAT WASHER
47	1340774	SPRING	97	902332	GUARD ASSEMBLY, INCL:, T2
48	904-01-010-1606	3/8" FLAT WASHER		1340839	GUARD ASSEMBLY, INCL:, T1
49	902331	BLADE TENSION KNOB, T2	98	1340827	GUARD
	1340773	BLADE TENSION KNOB, T1	99	901-02-010-0593	#10-24 X 3/8" BIND HD MACH SCREW
50	1340771	SWITCH SHUT OFF PLATE			
51	904-01-010-1604	1/4" FLAT WASHER			
52	901-01-060-0611	1/4-20 X 1/2" HEX HD CAP SCREW			
53	1340713	JUMPER WIRE (SWITCH TO MOTOR)			
54	1340829	WIRE NUT			
55	1340783	BEARING			
56	1340785	OIL SEAL			
57	1340784	SPACER			
58	1340767	BEARING RETAINER			
59	1340812	DRIVE SPACER			
60	1340836	DRIVE WHEEL ASSEMBLY, INCL:			
61	901-04-150-020	5/16-18 X 5/16" HEX SOC SET SCREW			



# REPLACEMENT PARTS

Ref.			Ref.		
<u>No.</u>	<u>Part No.</u>	<u>Description</u>	<u>No.</u>	<u>Part No.</u>	<u>Description</u>
100	902328	HARDWARE PACK	195	1340727	WISE LEAD SCREW
150	1340748	VERTICAL CUTTING PLATE	196	1340835	HANDWHEEL ASSEMBLY, INCL:
151	901-03-030-0761	1/4-20 X 1/2" HEX SOC FLAT HD SCREW	197	901-04-150-020	5/16-18 X 5/16" HEX SOC SET SCREW
152	1340749	VERTICAL CUTTING PLATE SUPPORT	198	1340725	RETAINING RING
153	1340712	ADJUSTING ROD	199	1340733	SCALE
154	901-01-060-0607	5/16-18 X 3/4" HEX HD CAP SCREW	200	901-04-150-9402	5/16-18 X 3/4" HEX SOC SET SCREW
155	1340738	SUPPORT CLIP (LEFT)	201	901-01-060-3107	7/16-14 X 2" HEX HD CAP SCREW
156	902-01-010-1300	5/16-18 HEX NUT	202	902-01-040-1004	7/16-14 HEX NUT
157	1340737	SUPPORT CLIP (RIGHT)	203	1340832	HANDLE, INCL:
158	1340739	EYE BOLT	204	1340704	RETAINER PIN
159	1340740	TENSION SPRING	205	902333	LEG, T2
160	901-01-060-0649	5/16-18 X 1" HEX HD CAP SCREW		1340710	LEG, T1
161	1340744	WASHER	206	901-01-060-0649	5/16-18 X 1" HEX HD CAP SCREW
162	901-01-060-0607	5/16-18 X 3/4" HEX HD CAP SCREW	207	904-01-010-1604	5/16" FLAT WASHER
163	n 904806	TILT BRACKET, T2	208	902-01-010-1300	5/16-18 HEX NUT
	1340747	TILT BRACKET, T1	209	902335	SHELF, T2
164	1340714	PIVOT SHAFT		1340809	SHELF, T1
165	1340735	RUBBER GROMMET	210	1243456	M6 HEX NUT
166	901-01-060-0609	5/16-18 X 1 1/2" HEX HD CAP SCREW	211	1243520	6MM LOCK WASHER
167	904-02-010-1703	5/16" LOCK WASHER	212	1341951	M6 X 10MM HEX HD SCREW
168	901-01-060-0607	5/16-18 X 3/4" HEX HD CAP SCREW	213	902334	LEG, T2
169	902934	REAR VISE JAW, T2		1340703	LEG, T1
	1340742	REAR VISE JAW, T1	214	1340833	WHEEL ASSEMBLY, INCL:
170	1340744	WASHER	215	901-01-060-061	1/4-20 X 1/2" HEX HD CAP SCREW
171	902-01-010-1300	5/16-18 HEX NUT	216	904-01-010-160	1/4" FLAT WASHER
172	901-01-060-0648	3/8-16 X 1 1/4" SCREW, BEFORE S/N R9605	217	902-01-120-103	1/4-20 HEX NUT
	901-01-060-0602	5/16-18 1-1/4" SCREW, AFTER S/N R9604	218	1340828	FLOOR MOUNT BRACKET
173	904-01-010-1606	3/8" FLAT WASHER, BEFORE S/N R9605	219	901-01-060-0605	5/16-18 X 1/2" HEX HD CAP SCREW
	n 904-01-033-1451	5/16" FLAT WASHER, AFTER S/N R9604	220	904-01-010-1605	5/16" FLAT WASHER
174	902850	FRONT VISE JAW, T2	221	902-01-010-1300	5/16-18 HEX NUT
	1340729	FRONT VISE JAW, T1	222	1340736	POWER CORD
175	1340830	SPACER	223	n 912861	LOCK KNOB
176	901-01-060-0609	5/16-18 X 1 1/2" HEX HD CAP SCREW	224	n 912862	LOCK PIN
177	1340715	SUPPORT PLATE			
178	1340719	CORD CLAMP			
179	904-01-010-1605	5/16" FLAT WASHER			
180	902-01-010-1300	5/16-18 HEX NUT			
181	1340834	STOCK STOP, INCL:			
182	901-04-150-0206	5/16-18 X 5/16" HEX SOC SET SCREW			
183	1340718	STOCK STOP ROD			
184	1340732	BASE			
185	901-02-163-1002	#10-24 X 1" SLOT PAN HD MACH SCREW			
186	904-01-010-1604	1/4" FLAT WASHER			
187	902-01-120-1216	#10-24 HEX NUT, PRIOR TO S/N R9605			
	902-01-120-1034	1/4-20 HEX NUT AFTER S/N R9604			
188	904-03-030-1795	LOCKWASHER			
189	424-01-014-0002	SWITCH GUARD			
190	438-01-021-0105	SWITCH PLATE			
191	n 438-01-628-0005	SWITCH W/NUT			
192	1340815	M4 SELF TAP SCREW			
193	1340734	SWITCH BOX			
194	1340728	WISE NUT			

## STANDARD SAFETY EQUIPMENT

In order to promote tool safety, Delta Machinery strictly enforces the policy of repairing or replacing any damaged or missing standard safety equipment on machines presented to Delta Authorized Service Centers for service/repairs. Any product that is presented to a Delta Authorized Service Centers for repairs which contains missing or damaged standard safety equipment will have that equipment repaired or replaced and the customer will be charged for any such service/repairs. Customers can avoid such charges only if the missing safety component is supplied to the service center at the time of repair.

*This parts list is provided to aid in obtaining service parts. Copies of the instruction and maintenance literature can be obtained through the Delta Technical Publications Department or through your service outlet.*