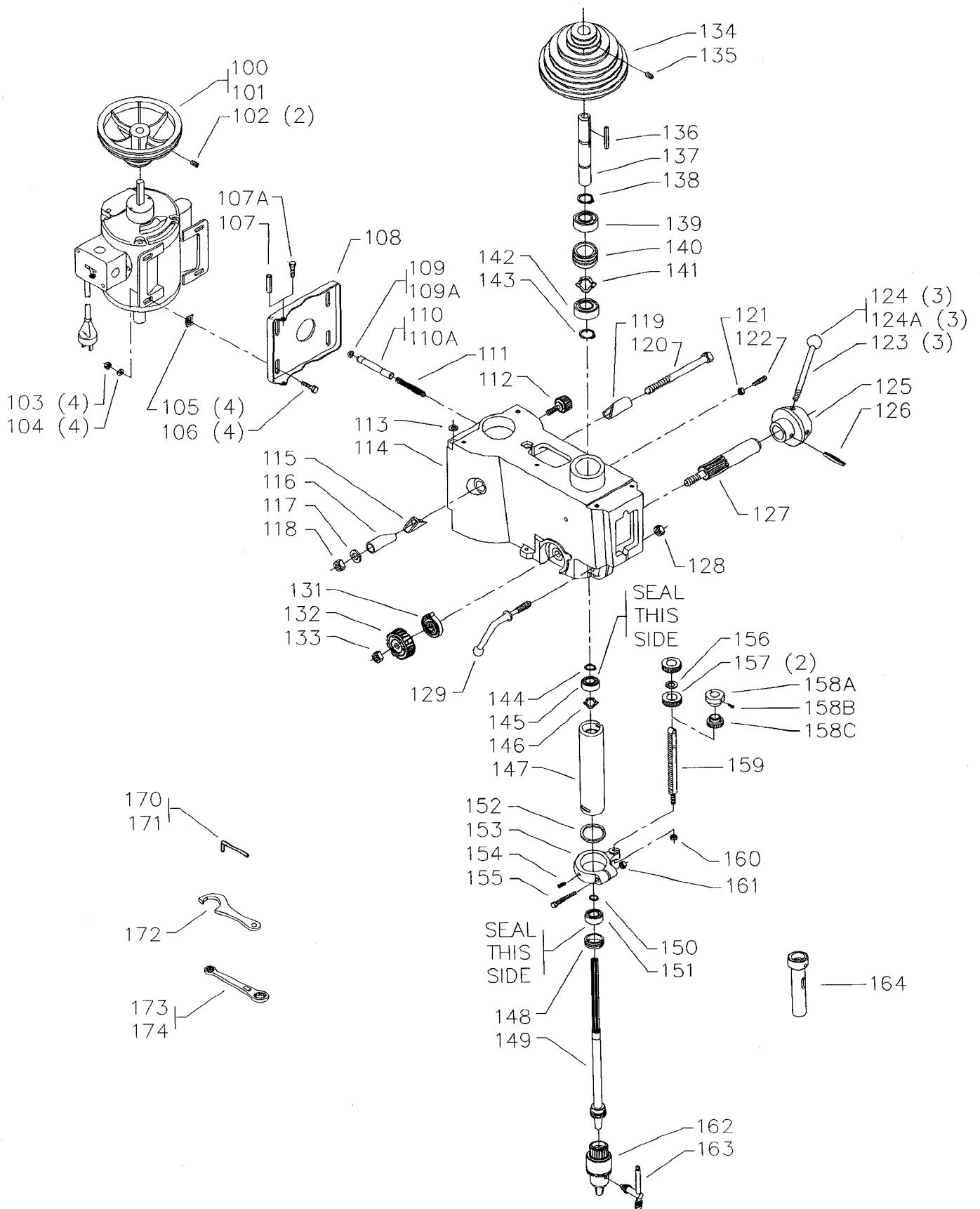


REPLACEMENT PARTS

REF NO	PART NUMBER	DESCRIPTION
*	15-825	BELT GUARD COMPLETE, CONST OF:
1	402-04-354-5024	BELT GUARD, INCL:
2	402-05-137-0001	NAMEPLATE
3	901-06-450-2252	#02 X 3/16" ROUND HD SCREW
4	960-03-012-0414	SPEED CHART
5	928-03-011-8878	SPRING - RH
6	902-03-010-2971	TINNERMAN NUT
7	928-03-011-8879	SPRING - LH
8	901-01-060-0605	5/16-18 X 1/2" HEX HD SCREW
9	402-04-354-5014	GUARD PAN, INCL:
10	402-04-016-5001	BUMPER
11	902-01-120-1203	#10-32 HEX NUT
12	931-02-051-4074	KNOB
13	901-02-050-0732	#10-32 X 1 1/4" FILL HD SCREW
14	402-00-752-0001	WARNING LABEL
15	49-093	V-BELT - 44 1/8" OC
16	907-01-050-5239	OILER
17	402-04-112-5001	ADJUSTING SCREW
18	901-03-013-1026	1/4-20 X 1 3/4" HEX SOC HD SCREW
19	902-01-200-9706	1/4-20 HEX NUT
20	438-01-021-0081	SWITCH BRACKET (<i>Early Models Only</i>)
21	901-06-120-3016	SCREW (<i>Early Models Only</i>)
22	902-01-120-9232	#06-32 HEX NUT
23	904-03-030-1788	EXT TOOTH WASHER
24	402-07-111-5002	STUD
25	402-07-104-5007	SPACER
26	1340100	SWITCH COVER ASSY
27	901-02-010-0567	#06-32 X 1/4" ROUND HD SCREW
28	402-04-031-0001	SWITCH OPENING COVER
29	901-06-120-3015	#06 X 1/4" RD HD SCREW
30	15-010	SUPPORT COLLAR, INCL:
31	902-01-040-1004	7/16-14 JAM NUT
32	901-01-060-0641	1/4-20 X 3 1/2" HEX HD SCREW
*	15-809	TILT TABLE COMPLETE, CONST OF:
33	402-04-105-5005	SLEEVE
34	901-11-010-7862	1/2-13 X 2 3/4" SQUARE HD SCREW
35	402-04-314-5002	BRACKET ASSY, INCL:
36	901-01-060-0643	1/2-13 X 4" HEX HD SCREW
37	904-10-031-3893	WASHER
38	931-04-991-3461	CLAMP NUT
39	402-04-072-5002	SCALE
40	901-06-450-2849	#06 X 1/4" ROUND HD SCREW
41	402-04-091-5004	TABLE
42	904-01-010-1636	FLAT WASHER
43	902-01-100-1028	1/2-13 HEX NUT
44	402-02-071-5001	INDEX PIN
45	402-04-027-5005	CLAMP ASSY, INCL:
46	901-11-020-0806	5/16-18 X 1 1/2" CARRIAGE HD SCREW
47	902-01-010-1300	5/16-18 HEX NUT
48	904-02-010-1703	5/16" LOCK WASHER
49	15-804	2-3/4 X 33-3/4 COLUMN (<i>BENCH MODEL</i>)
49	15-805	2-3/4 X 38-3/4 COLUMN (<i>BENCH MODEL</i>)
49	15-806	2-3/4 X 65-1/4 COLUMN (<i>FLOOR MODEL</i>)
49	15-810	2-3/4 X 78" COLUMN (<i>FLOOR MODEL</i>)
50	402-04-005-5006	BASE - FLOOR
51	402-04-027-5003	CLAMP
52	904-01-010-1607	1/2" FLAT WASHER
53	902-01-010-5437	7/16-14 HEX NUT
54	402-04-005-5008	BENCH - BENCH
55	402-04-027-5003	CLAMP
56	904-01-010-1607	1/2" FLAT WASHER
57	902-01-010-5437	7/16-14 HEX NUT

* NOT SHOWN ASSEMBLED



REPLACEMENT PARTS

REF NO	PART NUMBER	DESCRIPTION	REF NO	PART NUMBER	DESCRIPTION
100	41-832	MOTOR PULLEY - 1/2" BORE, INCL:	*	402-04-405-5006	SLEEVE ASSY, CONST OF:
102	901-04-150-0232	1/4-20 X 3/8" HEX SOC SET SCREW	137	402-04-105-5006	SLEEVE
101	41-833	MOTOR PULLEY - 5/8" BORE, INCL:	138	904-15-010-7025	EXT RET RING
102	901-04-150-0232	1/4-20 X 3/8" HEX SOC SET SCREW	139	920-04-020-5360	BALL BEARING
103	902-01-010-1300	5/16-18 HEX NUT	140	402-04-079-5001	RETAINER
104	904-01-010-1620	FLAT WASHER	141	928-06-010-7352	SPRING WASHER
105	902-03-000-2951	5/16-18 PUSH NUT	142	920-04-020-5360	BALL BEARING
106	901-11-020-0834	5/16-18 X 3/4" CARRIAGE HD SCREW	143	904-15-010-7025	EXT RET RING
107	905-01-010-5085	5/16" X 3/4" SPRING PIN <i>(Current Models Only)</i>	*	402-04-377-5003	QUILL ASSY, CONST OF:
107A	901-01-060-0606	5/16-18 X 5/8" HEX HD SCREW <i>(Early Models Only)</i>	144	904-15-010-7411	EXT RET RING
108	402-04-072-5001	MOTOR PLATE	145	920-04-020-5384	BALL BEARING
109	1201531	BUMPER - SLIP ON <i>(Current Models Only)</i>	146	928-06-011-4127	SPRING
109A	932-01-000-2851	BUMPER - SCREW ON <i>(Early Models Only)</i>	147	402-04-077-5002	QUILL
110	1202117	STOP - NONTHREADED <i>(Current Models Only)</i>	148	902-07-020-7176	NUT
110A	402-04-088-5004	STOP - THREADED <i>(Early Models Only)</i>	149	402-04-385-5006	SPINDLE ASSY, INCL:
111	928-01-021-4110	SPRING	150	904-15-010-7410	EXT RET RING
112	931-02-113-1185	KNOB ASSY	151	920-04-020-5384	BALL BEARING
113	904-01-010-1620	FLAT WASHER	152	908-00-000-3769	GASKET
114	402-04-057-5005	HEAD CASTING	153	402-04-314-5007	STOP COLLAR ASSY, INCL:
115	402-03-027-5002	CLAMP	154	901-04-150-0278	#10-32 X 1/2" HEX SOC SET SCREW
116	402-03-105-5003	SLEEVE	155	901-01-060-0622	1/4-20 X 2" HEX HD SCREW
117	904-01-031-2905	FLAT WASHER	*	402-04-408-5005	ROD ASSY, INCL:
118	902-01-010-1282	1/2-13 HEX NUT	156	904-01-103-1317	FLAT WASHER <i>(Current Models Only)</i>
119	402-03-105-5001	SLEEVE	157	402-12-068-5001	KNURLED NUT <i>(Current Models Only)</i>
120	901-01-060-0621	1/2-13 X 5.50 HEX HD SCREW	158A	402-04-012-5001	HOLDING NUT <i>(Early Models Only)</i>
121	902-01-020-5435	5/16-18 JAM NUT	158B	901-04-260-1534	#06-32 X 1/4" THUMB SCREW <i>(Early Models Only)</i>
122	901-04-010-0378	5/16-18 X 7/8" HEX SOC SET SCREW	158C	402-04-088-5005	MICRO STOP <i>(Early Models Only,</i>
123	1202603	STUD W/BALL, INCL:	159	402-04-108-5007	STOP ROD
124	1201642	KNOB - SLIP ON <i>(Current Models Only)</i>	160	902-01-010-5900	3/8-16 JAM NUT
124A	931-01-011-3519	HANDLE - SCREW ON <i>(Early Models Only)</i>	161	931-02-141-4087	CLAMP NUT
125	402-04-107-5002	HUB	162	15-830	CHUCK, INCL:
126	905-01-010-6745	3/16" X 1 7/8" SPRING PIN	163	65-104	KEY
127	402-04-051-5009	PINION	164	15-833	#2MT ADAPTER
128	902-01-010-1232	7/16-20 JAM NUT	170	955-03-020-2167	1/8" HEX WRENCH
129	402-04-068-5001	BALL CRANK	171	955-03-013-1490	5/32" HEX WRENCH
131	402-04-331-5002	PINION RET SPRING, INCL:	172	15-838	SPANNER WRENCH
132	402-04-031-5001	HOUSING	173	955-01-020-0022	.442" X .561" BOX END WRENCH
133	902-01-281-7295	1/4-20 HEX NUT	174	955-01-020-0023	.567" X .88" BOX END WRENCH
134	402-04-430-5005	SPINDLE PULLEY ASSY, INCL:	*		NOT SHOWN ASSEMBLED
135	901-04-150-0232	1/4-20 X 3/8" HEX SOC SET SCREW			
136	927-03-010-2668	3/16 X 3/16" X 1 3/4" KEY			

STANDARD SAFETY EQUIPMENT

In order to promote tool safety, Delta International Machinery Corp. strictly enforces the policy of repairing or replacing any damaged or missing standard safety equipment on machines presented to Delta Authorized Service Center for service/repairs. Any product which is presented to a Delta Authorized Service Center for repairs which contains missing or damaged standard safety equipment will have that equipment repaired or replaced and the customer will be charged for any such service/repairs. Customers can avoid such charges only if the missing safety component is supplied to the service center at the time of repair.

This parts list is provided to aid in obtaining service parts. Copies of the instruction and maintenance literature can be obtained through the Delta Technical Publications Department or through your local service outlet.