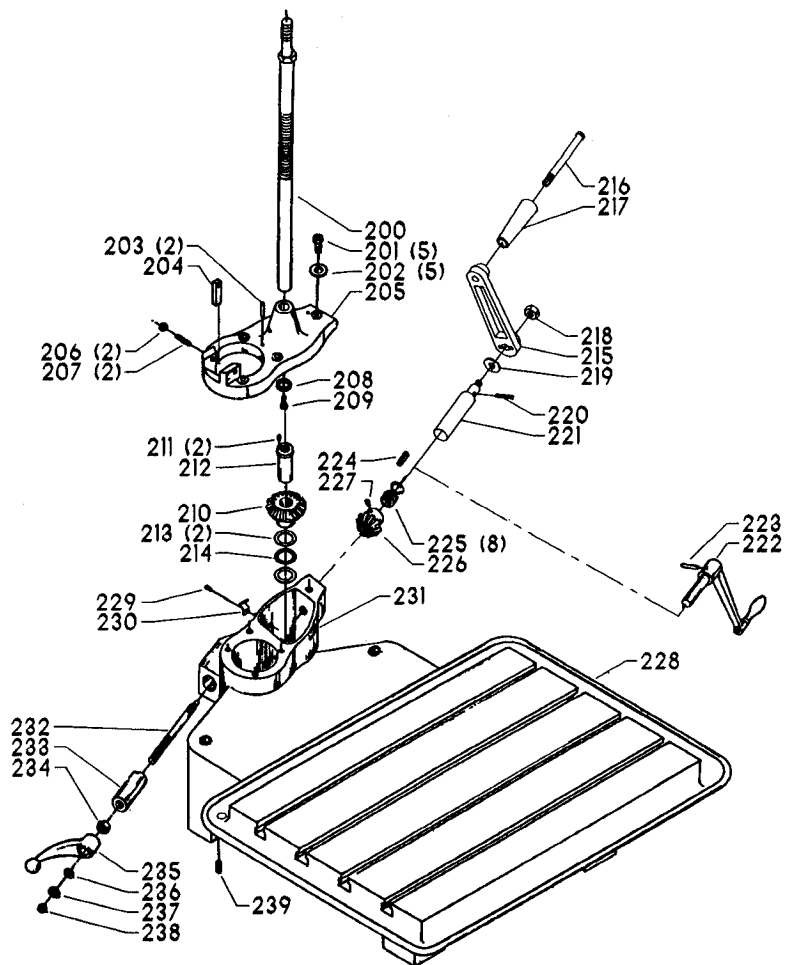


REPLACEMENT PARTS

REF NO	PART NUMBER	DESCRIPTION
1	439-01-354-5001	GUARD ASSY, INCL:
2	902-01-020-5433	3/8-16 JAM NUT
3	904-01-010-1606	3/8" FLAT WASHER
4	901-06-450-2252	#02 X 3/16" ROUND HD SCREW
5	439-01-137-0007	SPEED CHART
6	905-04-081-4464	STUD
7	932-01-020-2864	BUMPER
7A	402-00-752-0001	WARNING LABEL
8	41-703	PULLEY, INCL:
9	901-04-150-1185	1/4-20 X 5/16" HEX SOC SET SCREW
10	926-04-991-5809	PULLEY, INCL:
11	901-04-150-0202	1/4-20 X 1/2" HEX SOC SET SCREW
12	904-15-010-7410	EXT RET RING
13	927-03-010-2650	3/16" SQ X 1 3/8" KEY
14	1202600	SHAFT
15	920-04-020-5384	BALL BEARING
16	1202601	SPACER
17	49-287	V-BELT
18	901-01-060-0649	5/16-18 X 1" HEX HD SCREW
19	904-02-010-1703	5/16" LOCK WASHER
20	904-01-010-1605	3/8" FLAT WASHER
*	439-01-372-5001	MOTOR PLATE, CONST OF:
21	901-04-150-0231	5/16-18 X 3/8" HEX SOC SET SCREW
22	439-01-072-5002	MOTOR PLATE
23	905-04-191-2045	PIN
24	901-02-010-0509	1/4-20 X 1/2" ROUND HD SCREW
25	904-01-010-1614	FLAT WASHER
26	439-01-027-5001	LOCK HANDLE
27	400-00-001-0001	LOCK NUT
28	904-01-010-1636	FLAT WASHER
29	952-01-111-4859	STUD
30	901-01-060-5781	1/2-20 X 3/4" HEX HD SCREW
31	439-01-014-5005	BRACKET
32	902-01-020-1266	1/2-13 JAM NUT
33	904-02-020-1705	1/2" LOCK WASHER
34	904-01-010-1636	FLAT WASHER
35	952-01-111-4859	STUD
36	905-04-101-2024	5/16" X 2 1/2" DOWEL PIN
37	901-04-150-0217	5/16-18 X 1/2" HEX SOC SET SCREW
38	41-703	PULLEY ASSY, INCL:
39	901-04-150-1185	1/4-20 X 5/16" HEX SOC SET SCREW
40	439-01-014-5003	BRACKET
41	429-01-004-0005	CABLE CLIP
42	901-02-010-7562	#10-32 X 5/16" ROUND HD SCREW
43	901-01-060-0672	1/2-20 X 1 1/4" HEX HD SCREW
44	904-01-010-1636	FLAT WASHER
45	1203069	SPINDLE PULLEY ASSY, INCL:
46	904-01-031-4971	FLAT WASHER
47	901-02-010-0555	#08-32 X 3/8" ROUND HD SCREW
48	402-02-051-5002	SPINDLE SLEEVE
49	1203070	BEARING
50	901-04-150-0217	5/16-18 X 1/2" HEX SOC SET SCREW
51	901-01-060-0626	1/4-20 X 3/4" HEX HD SCREW
52	904-02-020-1702	1/4" LOCK WASHER
53	439-01-079-5003	RETAINER
54	402-05-137-0001	NAMEPLATE
55	901-06-450-2252	#02 X 3/16" ROUND HD SCREW
56	439-01-057-5004	HEAD
57	901-01-060-0605	5/16-18 X 1/2" HEX HD SCREW
58	904-10-031-5381	WASHER
*	401-01-407-5001	HUB ASSY, CONST OF:
59	401-01-107-5001	HUB
60	905-04-081-4471	STUD
61	1201642	KNOB - SLIP ON
62	927-03-010-2696	KEY
63	1202361	SHAFT
64	952-01-121-3274	SPRING PIN
65	905-04-071-4485	PLUG
66	901-09-081-5210	QUILL ADJUSTING SCREW
67	402-06-104-5001	WASHER
68	901-02-010-0509	1/4-20 X 1/2" ROUND HD SCREW
69	1200227	HAND KNOB W/STUD
70	905-02-010-6861	5/32" X 5/8" GROOVE PIN
71	401-02-079-5001	PINION RETAINER
72	901-03-040-8015	1/4-20 X 1/2" BUTTON HD SCREW
73	928-08-012-1766	SPRING
74	401-04-031-5001	SPRING HOUSING
75	904-01-010-1622	FLAT WASHER
76	902-01-020-1226	5/8-18 JAM NUT

* NOT SHOWN ASSEMBLED

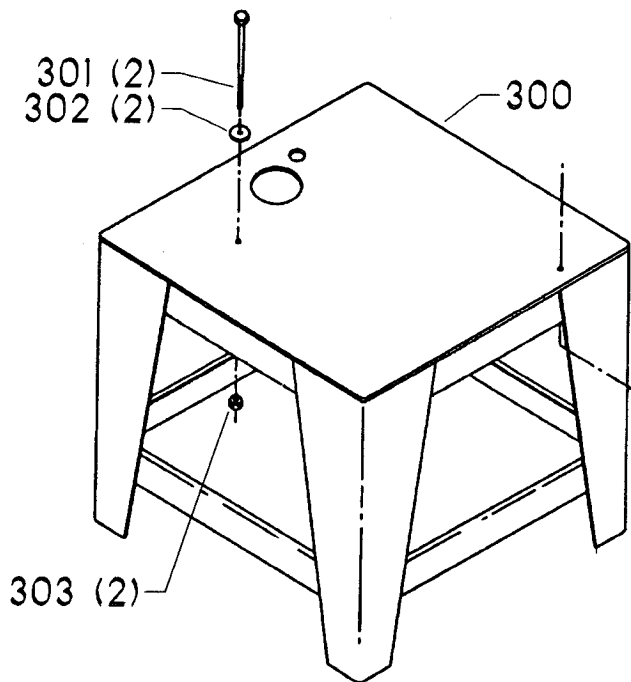
REPLACEMENT PARTS



REF NO	PART NUMBER	DESCRIPTION	REF NO	PART NUMBER	DESCRIPTION
200	439-01-412-5002	RAISING SCREW	220	905-01-010-2732	5/32" X 1" SPRING PIN (<i>Current Models Only</i>)
201	901-01-060-0609	5/16-18 X 1 1/2" HEX HD SCREW	221	439-01-106-5004	SHAFT (<i>Current Models Only</i>)
202	904-01-010-1620	FLAT WASHER	222	439-01-367-5001	CRANK, (<i>Early Models Only</i>), INCL:
203	905-02-010-7105	1/4" X 1 1/4" GROOVE PIN	223	905-01-010-2712	1/4" X 1 1/4" SPRING PIN
204	439-01-055-5003	GUIDE	224	927-03-010-2695	1" KEY
205	439-01-331-5001	COVER, INCL:	225	904-01-021-3554	3/4" FLAT WASHER
206	902-01-010-1207	3/8-24 HEX NUT	226	439-01-351-5002	GEAR, INCL;
207	901-04-140-6243	3/8-24 X 1 1/4" HEX SOC SET SCREW	227	901-04-150-0206	5/16-18 X 5/16" HEX SOC SET SCREW
208	904-10-051-5519	5/16" WASHER	228	439-01-005-5001	BASE
209	901-01-060-0606	5/16-18 X 5/8" HEX HD SCREW	229	901-02-010-7562	#10-32 X 5/16" ROUND HD SCREW
210	439-01-351-5003	GEAR KIT, INCL:	230	429-01-004-0005	CABLE CLIP
211	901-04-150-0278	#10-32 X 1/2" HEX SOC SET SCREW	231	960-03-011-5153	DECAL
212	904-10-121-5352	BUSHING	232	952-01-141-3285	STUD
213	0908716	BEARING	233	904-10-131-5359	LOCKING PLUG
214	0908715	THRUST BEARING	234	902-01-020-9103	5/8-11 JAM NUT
215	424-02-333-0008	CRANK ASSY (<i>Current Models Only</i>), INCL:	235	402-07-027-5002	LOCK LEVER
216	422-04-071-5002	PIN	236	904-01-031-5651	5/8" FLAT WASHER
217	1086395	HANDLE	237	904-02-010-1713	LOCK WASHER
218	1342922	5/16-18 LOCK NUT (<i>Current Models Only</i>)	238	902-01-210-1084	5/8-11 LOCK NUT
219	904-01-031-5655	FLAT WASHER (<i>Current Models Only</i>)	239	906-00-000-2437	1/2" PIPE PLUG

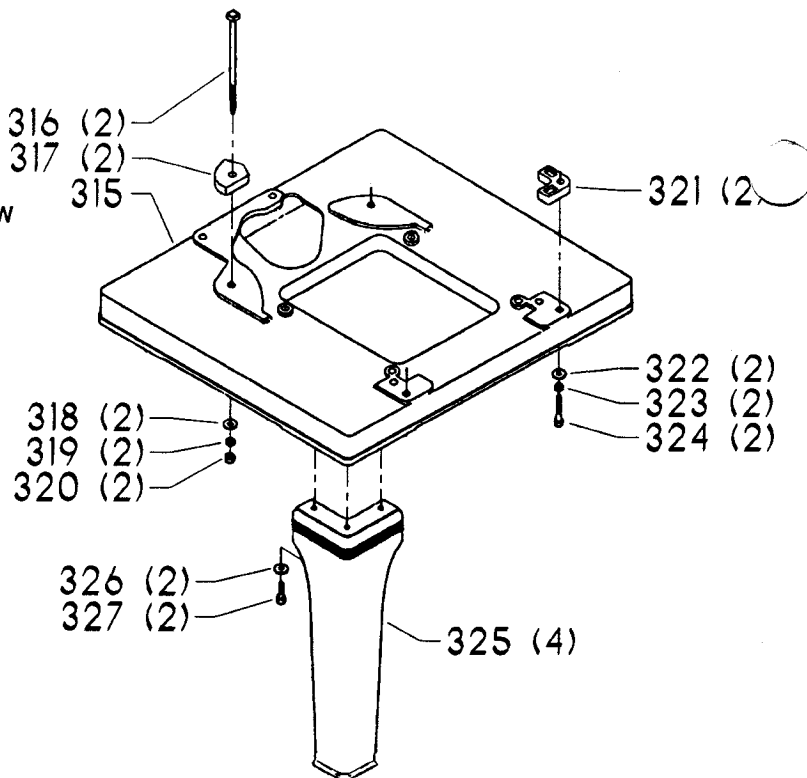
* NOT SHOWN ASSEMBLED

REPLACEMENT PARTS



REF NO	PART NUMBER	DESCRIPTION
300	65-863	FLOOR STAND, INCL:
301	901-01-063-1117	1/2-13 X 8" HEX HD SCREW
302	904-01-031-4951	1/2" FLAT WASHER
303	902-01-010-1282	1/2-13 HEX NUT
304	408-01-112-5012	LEVELING SCREW
305	901-01-060-3117	1/2-13 X 2" HEX HD SCREW

REF NO	PART NUMBER	DESCRIPTION
315	439-01-005-5003	LOWER BASE
316	901-11-010-7851	1/2-13 X 9.00 SQUARE HD SCREW
317	439-01-104-5002	SPACER - REAR
318	904-01-010-1618	9/16" FLAT WASHER
319	904-02-020-1705	1/2" LOCK WASHER
320	902-01-010-1282	1/2-13 HEX NUT
321	439-01-104-5001	SPACER - FRONT
322	904-01-010-1618	9/16" FLAT WASHER
323	904-02-020-1705	1/2" LOCK WASHER
324	901-01-060-3112	1/2-13 X 2 1/4" HEX HD SCREW
325	439-01-066-5001	LEG
326	904-01-010-1618	9/16" FLAT WASHER
327	901-01-060-0620	1/2-13 X 1 1/4" HEX HD SCREW

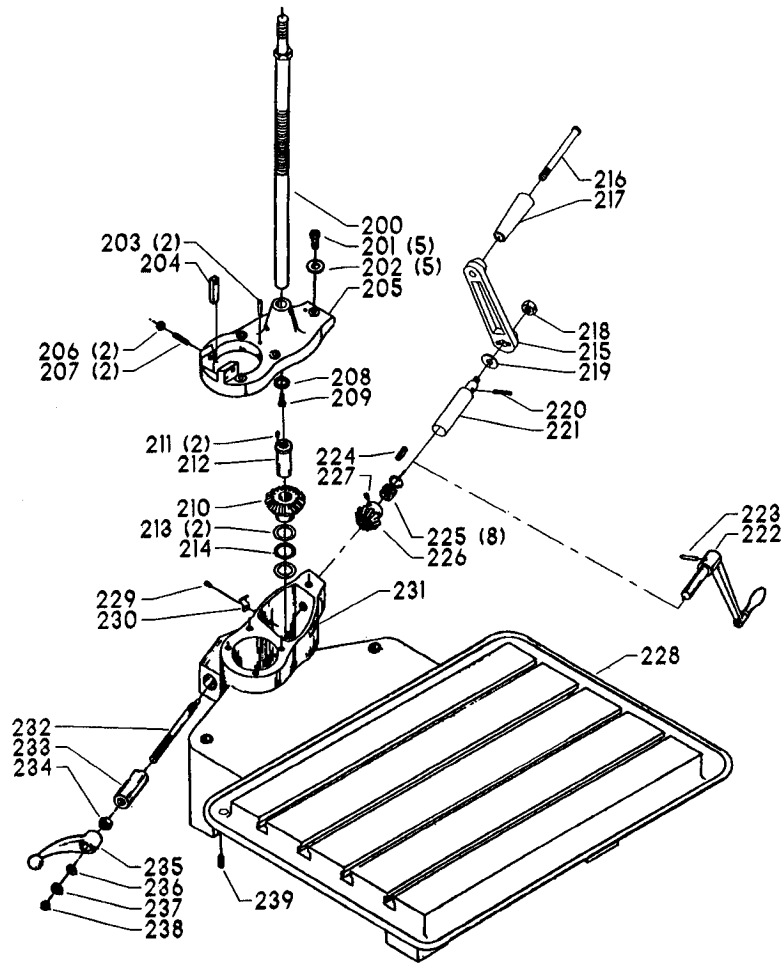


STANDARD SAFETY EQUIPMENT

In order to promote tool safety, Delta International Machinery Corp. strictly enforces the policy of repairing or replacing any damaged or missing standard safety equipment on machines presented to Delta Authorized Service Center for service/repairs. Any product which is presented to a Delta Authorized Service Center for repairs which contains missing or damaged standard safety equipment will have that equipment repaired or replaced and the customer will be charged for any such service/repairs. Customers can avoid such charges only if the missing safety component is supplied to the service center at the time of repair.

This parts list is provided to aid in obtaining service parts. Copies of the instruction and maintenance literature can be obtained through the Delta Technical Publications Department or through your local service outlet.

REPLACEMENT PARTS



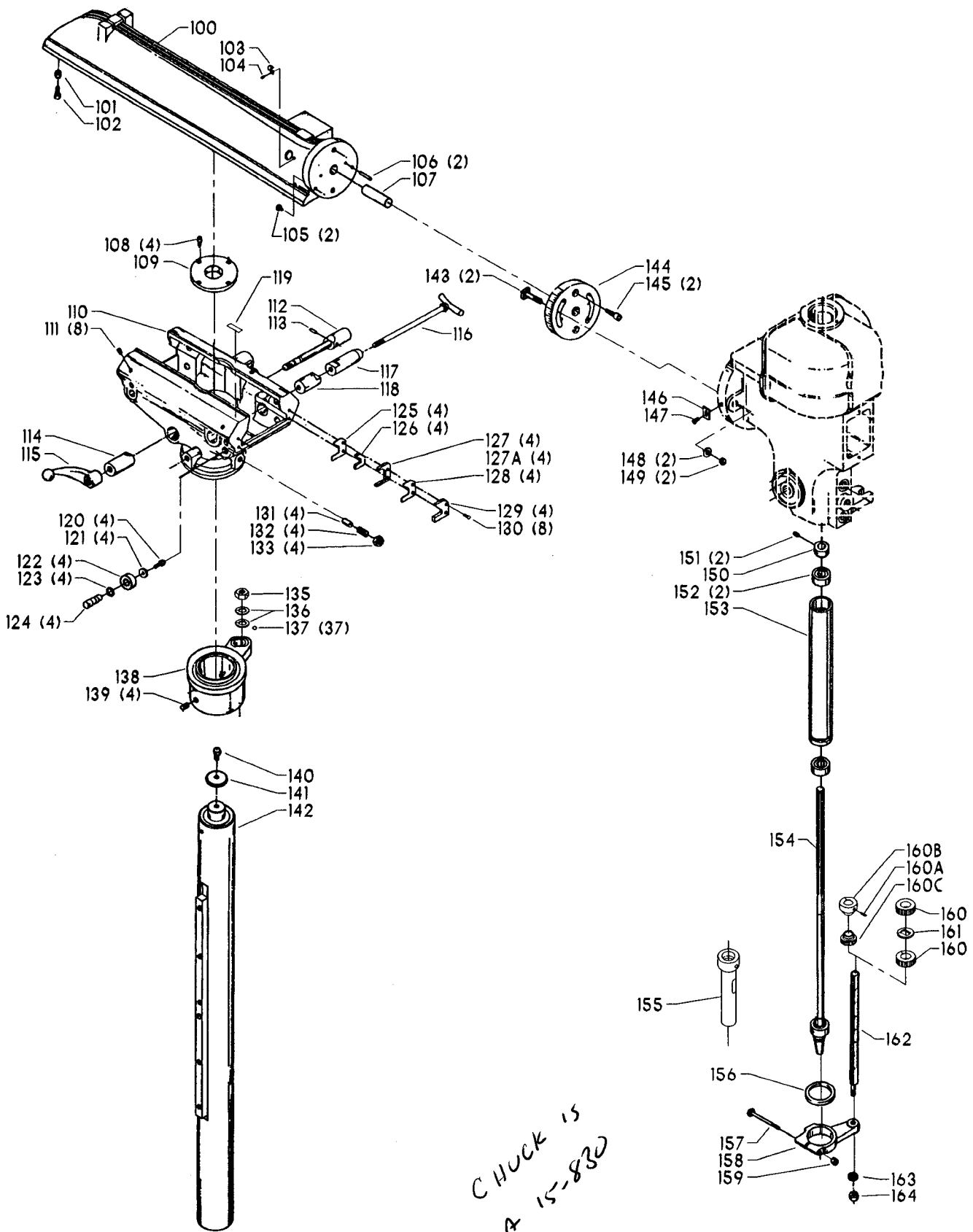
REF NO	PART NUMBER	DESCRIPTION	REF NO	PART NUMBER	DESCRIPTION
200	439-01-412-5002	RAISING SCREW	220	905-01-010-2732	5/32" X 1" SPRING PIN (<i>Current Models Only</i>)
201	901-01-060-0609	5/16-18 X 1 1/2" HEX HD SCREW	221	439-01-106-5004	SHAFT (<i>Current Models Only</i>)
202	904-01-010-1620	FLAT WASHER	222	439-01-367-5001	CRANK, (<i>Early Models Only</i>), INCL:
203	905-02-010-7105	1/4" X 1 1/4" GROOVE PIN	223	905-01-010-2712	1/4" X 1 1/4" SPRING PIN
204	439-01-055-5003	GUIDE	224	927-03-010-2695	1" KEY
205	439-01-331-5001	COVER, INCL:	225	904-01-021-3554	3/4" FLAT WASHER
206	902-01-010-1207	3/8-24 HEX NUT	226	439-01-351-5002	GEAR, INCL;
207	901-04-140-6243	3/8-24 X 1 1/4" HEX SOC SET SCREW	227	901-04-150-0206	5/16-18 X 5/16" HEX SOC SET SCREW
208	904-10-051-5519	5/16" WASHER	228	439-01-005-5001	BASE
209	901-01-060-0606	5/16-18 X 5/8" HEX HD SCREW	229	901-02-010-7562	#10-32 X 5/16" ROUND HD SCREW
210	439-01-351-5003	GEAR KIT, INCL:	230	429-01-004-0005	CABLE CLIP
211	901-04-150-0278	#10-32 X 1/2" HEX SOC SET SCREW	231	960-03-011-5153	DECAL
212	904-10-121-5352	BUSHING	232	952-01-141-3285	STUD
213	0908716	BEARING	233	904-10-131-5359	LOCKING PLUG
214	0908715	THRUST BEARING	234	902-01-020-9103	5/8-11 JAM NUT
215	424-02-333-0008	CRANK ASSY (<i>Current Models Only</i>), INCL:	235	402-07-027-5002	LOCK LEVER
216	422-04-071-5002	PIN	236	904-01-031-5651	5/8" FLAT WASHER
217	1086395	HANDLE	237	904-02-010-1713	LOCK WASHER
218	1342922	5/16-18 LOCK NUT (<i>Current Models Only</i>)	238	902-01-210-1084	5/8-11 LOCK NUT
219	904-01-031-5655	FLAT WASHER (<i>Current Models Only</i>)	239	906-00-000-2437	1/2" PIPE PLUG

* NOT SHOWN ASSEMBLED

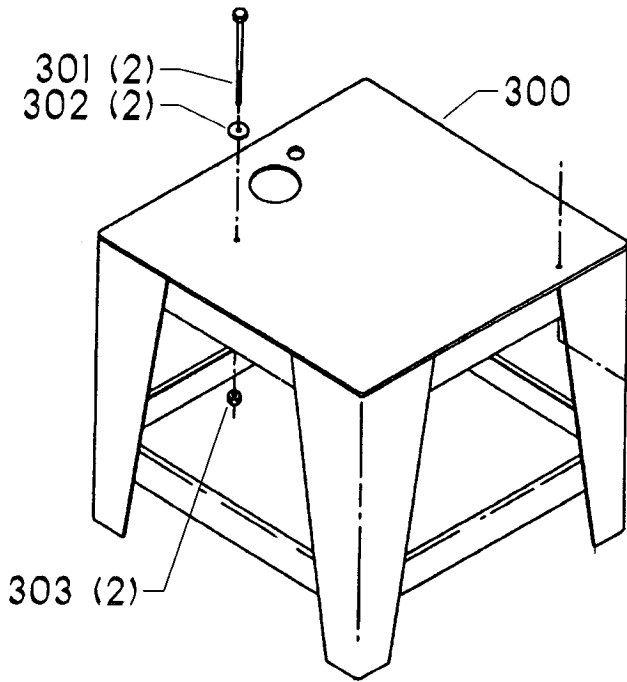
REPLACEMENT PARTS

REF NO	PART NUMBER	DESCRIPTION
100	439-01-084-5001	RAM
101	902-01-020-5433	3/8-16 JAM NUT
102	901-01-060-0640	3/8-16 X 3/4" HEX HD SCREW
103	429-01-004-0005	CABLE CLIP
104	901-02-010-7562	#10-32 X 5/16" ROUND HD SCREW
105	424-03-016-0001	RUBBER BUMPER
106	905-02-010-7105	1/4" X 1 1/4" GROOVE PIN
107	905-04-041-4498	1" X 2 3/4" DOWEL PIN
108	901-03-010-3350	5/16-18 X 1/2" HEX SOC HD SCREW
109	439-01-103-5001	FLANGE
110	439-01-089-5002	CRADLE
111	901-04-150-1111	3/8-16 X 3/8" HEX SOC SET SCREW
112	439-01-406-5001	SHAFT ASSY, INCL:
113	905-01-010-6714	5/32" X 1 1/4" SPRING PIN
114	904-10-131-5359	LOCKING PLUG
115	439-01-027-5002	CLAMP HANDLE
116	931-05-991-4777	RAM LOCKING STUD
117	439-01-068-5001	LOCKING PLUG - LONG
118	952-01-071-2379	LOCKING PLUG - SHORT
119	960-03-011-5153	DECAL
120	901-01-060-0605	5/16-18 X 1/2" HEX HD SCREW
121	904-10-031-5381	WASHER
122	920-04-020-5335	BALL BEARING
123	904-01-031-4967	FLAT WASHER
124	439-01-042-5001	ECCENTRIC
125	439-01-079-5001	FELT RETAINER
126	439-01-113-5001	SHEAR WIPER
127	439-01-060-5003	HOLDER (<i>Current Models Only</i>)
127A	439-01-060-5002	FELT RETAINER (<i>Early Models Only</i>)
128	439-01-079-5001	FELT RETAINER
129	439-01-060-5001	HOLDER (<i>Early Models Only</i>)
130	901-02-010-0509	1/4-20 X 1/2" ROUND HD SCREW
131	905-04-071-4482	BRASS PLUG
132	901-09-021-5219	SET SCREW
133	902-01-020-1226	5/8-18 JAM NUT
135	902-01-010-9104	3/4-16 HEX NUT
136	904-10-051-5515	FLANGE WASHER
137	921-01-010-0031	3/8" STEEL BALL
138	439-01-089-5001	COLUMN COLLAR
139	901-04-150-1123	1/2-13 X 5/8" HEX SOC SET SCREW
140	901-01-101-1568	SCREW
141	904-10-051-5512	1/2" WASHER
142	439-01-330-5001	COLUMN ASSY
143	901-09-101-5283	STUD
144	439-01-037-5001	FLANGE
145	901-03-101-5280	HEX HD SCREW
146	951-01-020-7849	POINTER
147	901-02-010-0558	#08-32 X 1/4" ROUND HD SCREW
148	904-01-010-1636	FLAT WASHER
149	902-09-040-5906	1/2-13 ACORN NUT
*	1203073	QUILL ASSY, CONST OF:
150	419-01-379-0001	COLLAR, INCL:
151	901-04-150-0208	1/4-20 X 1/4" HEX SOC SET SCREW
152	920-04-010-7277	BALL BEARING
153	401-02-077-5001	QUILL
154	1203077	SPINDLE - #33 JACOBS TAPER
155	15-833	#2MT ADAPTER
156	904-07-060-3774	GASKET
157	401-02-112-5002	SCREW
158	401-02-089-5001	STOP COLLAR
159	902-01-120-1034	1/4-20 HEX NUT
*	1201859	STOP ROD ASSY, CONST OF:
160	402-12-068-5001	KNURLED NUT (<i>Current Models Only</i>)
160A	901-04-260-1534	#06-32 X 1/4" THUMB SCREW (<i>Early Models Only</i>)
160B	402-04-012-5001	HOLDING NUT (<i>Early Models Only</i>)
160C	402-04-088-5005	MICRO NUT (<i>Early Models Only</i>)
161	904-01-103-1317	FLAT WASHER (<i>Current Models Only</i>)
162	1201858	STOP ROD
163	904-03-020-1789	3/8" INT TOOTH WASHER
164	902-01-020-5433	3/8-16 JAM NUT

* NOT SHOWN ASSEMBLED

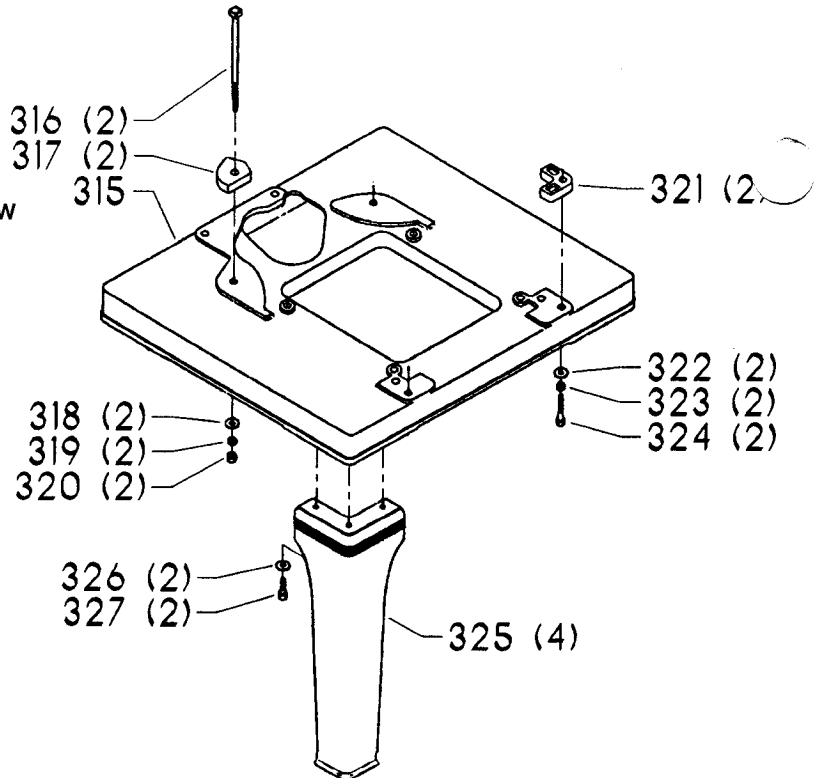


REPLACEMENT PARTS



REF NO	PART NUMBER	DESCRIPTION
300	65-863	FLOOR STAND, INCL:
301	901-01-063-1117	1/2-13 X 8" HEX HD SCREW
302	904-01-031-4951	1/2" FLAT WASHER
303	902-01-010-1282	1/2-13 HEX NUT
304	408-01-112-5012	LEVELING SCREW
305	901-01-060-3117	1/2-13 X 2" HEX HD SCREW

REF NO	PART NUMBER	DESCRIPTION
315	439-01-005-5003	LOWER BASE
316	901-11-010-7851	1/2-13 X 9.00 SQUARE HD SCREW
317	439-01-104-5002	SPACER - REAR
318	904-01-010-1618	9/16" FLAT WASHER
319	904-02-020-1705	1/2" LOCK WASHER
320	902-01-010-1282	1/2-13 HEX NUT
321	439-01-104-5001	SPACER - FRONT
322	904-01-010-1618	9/16" FLAT WASHER
323	904-02-020-1705	1/2" LOCK WASHER
324	901-01-060-3112	1/2-13 X 2 1/4" HEX HD SCREW
325	439-01-066-5001	LEG
326	904-01-010-1618	9/16" FLAT WASHER
327	901-01-060-0620	1/2-13 X 1 1/4" HEX HD SCREW



STANDARD SAFETY EQUIPMENT

In order to promote tool safety, Delta International Machinery Corp. strictly enforces the policy of repairing or replacing any damaged or missing standard safety equipment on machines presented to Delta Authorized Service Center for service/repairs. Any product which is presented to a Delta Authorized Service Center for repairs which contains missing or damaged standard safety equipment will have that equipment repaired or replaced and the customer will be charged for any such service/repairs. Customers can avoid such charges only if the missing safety component is supplied to the service center at the time of repair.

This parts list is provided to aid in obtaining service parts. Copies of the instruction and maintenance literature can be obtained through the Delta Technical Publications Department or through your local service outlet.