

REPLACEMENT PARTS

REF. NO.	PART NUMBER	DESCRIPTION	REF. NO.	PART NUMBER	DESCRIPTION
*	422-04-314-5003	ARBOR BRACKET, CONST OF:	156	434-01-404-0001	COLLAR, INCL:
101	422-04-303-0003	ARBOR & FLANGE	157	901-04-190-0201	5/16-18 X 5/16" HEX SOC SET SCR
102	927-03-020-2660	KEY	158	927-03-010-2650	KEY
103	1086894	BALL BEARING	159	901-01-060-0663	5/16-24 X 3/4" HEX HD SCR (EMO)
104	928-06-020-7382	LOAD SPRING	159A	901-01-060-5769	5/16-24 X 1" HEX HD SCR (CMO)
105	422-04-104-0002	SPACER	160	902-01-020-1228	5/16-24 JAM NUT
106	926-03-991-2328	PULLEY	161	905-01-010-2734	SPRING PIN
107	0908653	5/16-18 X 3/8" HEX SOC HD SCR	162	904-02-020-1704	3/8" LOCK WASHER
108	902-07-020-7176	BEARING NUT	163	901-03-010-0775	3/8-16 X 1" HEX SOC HD SCR
109	904-05-010-6664	LOCK WASHER	164	422-04-395-5001	FRONT TRUNNION, INCL:
110	902-01-200-9847	SPECIAL NUT	165	920-75-011-3935	BUSHING
111	902-01-200-9848	ARBOR NUT (LH)	170	901-01-060-0682	3/8-24 X 1 1/2" HEX HD SCR
112	422-04-103-5001	FLANGE	171	422-04-014-5001	FRONT TRUNNION BRACKET
113	422-04-314-5002	ARBOR BRACKET, INCL:	172	904-02-020-1704	3/8" LOCK WASHER
114	904-02-020-1704	3/8" LOCK WASHER	173	902-01-010-1207	3/8-24 HEX NUT
115	901-01-060-3102	3/8-16 X 1 3/4" HEX HD SCR	174	930-03-991-0468	HANDWHEEL
116	904-15-101-7147	INT RET RING (CMO)			(Painted, See Note A), INCL:
117	927-03-010-2653	KEY	175	901-04-190-0201	5/16-18 X 5/16" HEX SOC SET SCR
118	422-04-314-5004	MOTOR BRACKET w/SHAFT, INCL:	180	422-04-406-5001	TILT SHAFT w/WORM, INCL:
119	928-06-011-4128	SPRING WASHER	181	904-10-031-4509	COLLAR
120	905-01-010-5072	SPRING PIN	182	904-01-021-3577	3/4" FIBER WASHER
120A	927-03-010-2657	KEY (CMO)	183	905-01-010-2706	3/16 X 1" SPRING PIN
125	49-124	V-BELTS (MATCHED SET OF THREE)	184	422-04-074-0001	PLUG
126	41-644	MOTOR PULLEY, INCL:	185	422-04-412-0007	LOCK KNOB
127	0908653	5/16-18 X 3/8" HEX SOC HD SCR	186	904-07-010-5569	3/4" FIBER WASHER
130	904-10-031-2097	WASHER	187	901-03-010-0750	5/16-18 X 1" HEX SOC HD SCR
131	901-01-060-0664	7/16-20 X 1" HEX HD SCR	188	422-04-031-0015	COVER PLATE
132	422-04-071-5001	STEEL PIN	189	422-04-075-0001	POINTER
133	422-04-079-5001	SPRING CLIP	190	901-06-110-3036	1/4-20 X 3/8" ROUND HD SCR
134	422-04-036-5001	DEFLECTOR			(CMO, See Note B)
135	422-04-104-5005	SLEEVE	190A	901-03-043-1191	5/16-18 X 1/2" BUTTON HD SCR
136	901-01-060-0613	5/16-18 X 1 3/4" HEX HD SCR			(EMO, See Note B)
137	422-04-102-5002	YOKE	191	422-04-014-2008	POINTER BRACKET
138	422-04-014-5002	TRUNNION BRACKET (REAR)			(CMO, See Note B)
139	901-03-010-0775	3/8-16 X 1" HEX SOC HD SCR	191A	422-04-014-5008	POINTER BRACKET
140	904-02-020-1704	3/8" LOCK WASHER			(EMO, See Note B)
141	901-01-060-0682	3/8-24 X 1 1/2" HEX HD SCR	192	0919714	#08-32 X 2" FILL HD SCR
142	904-02-020-1704	3/8" LOCK WASHER	193	904-07-010-5569	3/4" FIBER WASHER
143	902-01-010-1207	3/8-24 HEX NUT	194	930-03-991-0468	HANDWHEEL
144	905-01-010-2734	SPRING PIN			(Painted, See Note A), INCL:
145	422-04-395-5002	REAR TRUNNION, INCL:	195	901-04-190-0201	5/16-18 X 5/16" HEX SOC SET SCR
146	920-75-011-3934	BEARING	197	927-03-010-2650	KEY
*	422-04-406-5002	RAISING SHAFT ASSY, CONST OF:	198	422-04-055-0006	GUIDE BLOCK
150	422-04-074-0001	PLUG	199	904-10-031-2097	WASHER
151	422-04-412-0007	LOCK KNOB	200	901-01-060-0681	7/16-20 X 1 1/2" HEX HD SCR
152	904-01-021-3577	3/4" FIBER WASHER	**	438-01-004-0054	CLAMP (See Note C)
153	905-01-010-2706	3/16 X 1" SPRING PIN	201	422-39-101-0001	WRENCH-7/8 X 1/2"
154	422-04-406-0001	RAISING SHAFT w/WORM, INCL:	202	955-01-050-1472	WRENCH
155	902-01-210-1036	3/4-16 LOCK NUT			

* NOT SHOWN ASSEMBLED

** NOT SHOWN

(EMO) = EARLY MODELS ONLY

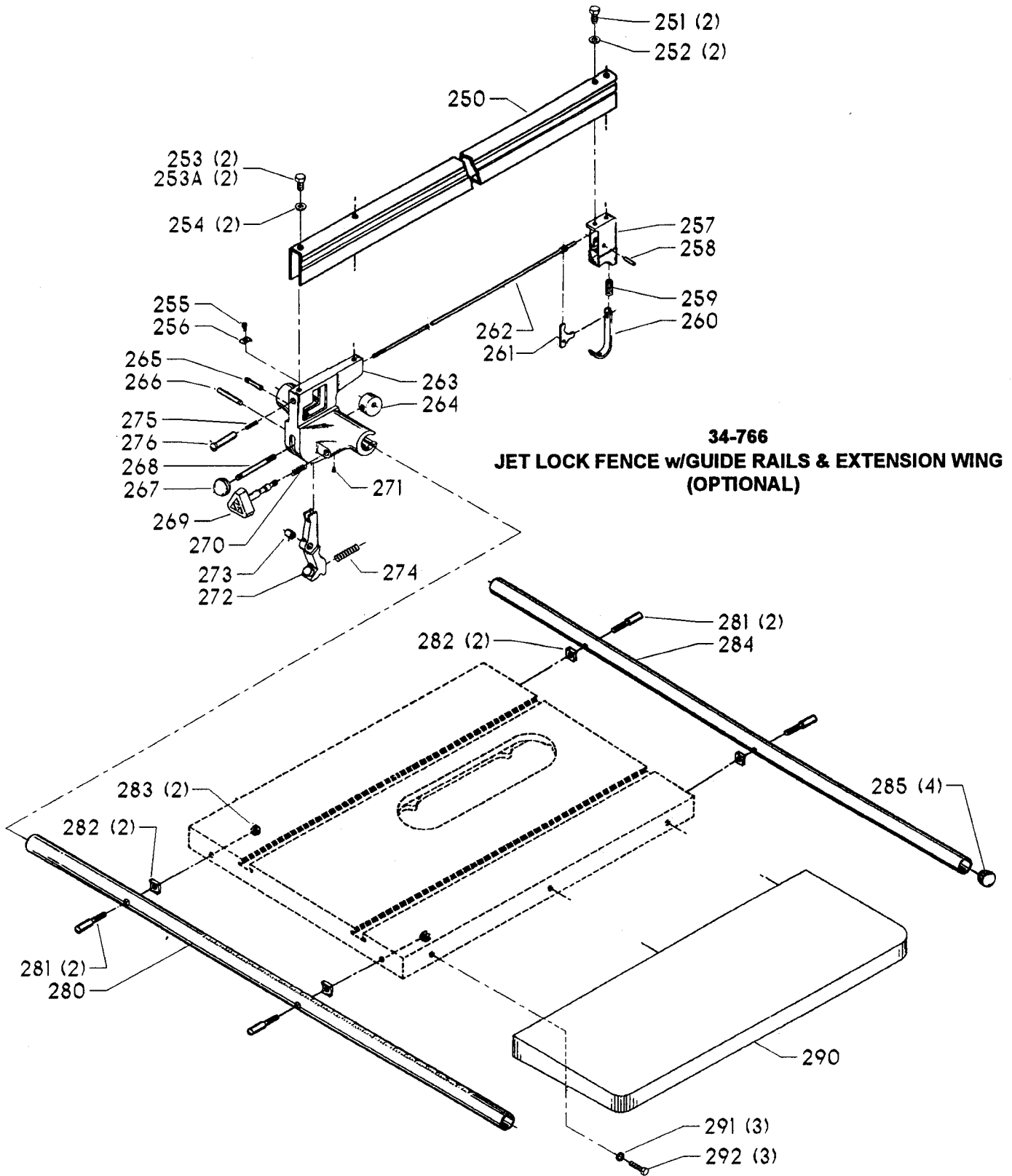
(CMO) = CURRENT MODELS ONLY

NOTES:

A) SPECIAL CHROMED PLATED HANDWHEELS P.N. 422-04-400-0003 ARE PROVIDED WITH MODEL 36-825, "LIMITED EDITION UNISAW"

B) EARLY MODEL POINTER BRACKETS (REF NO 191A) WERE TAPPED TO ACCEPT 5/16 X 1/2" POINTER RETAINING SCR (REF NO 190A). CURRENT MODEL POINTER BRACKET (REF 191) IS PROVIDED WITH UNTAPPED POINTER SCR HOLE WHICH MAY BE TAPPED 5/16-18 FOR USE WITH EARLY POINTER RETAINER SCR (REF NO 190A) OR USED UNTAPPED WITH CURRENT 1/4-20 THREAD FORMING POINTER RETAINING SCR (REF NO 190)

C) USED TO SECURE MOTOR AND SWITCH CORDS. SEE OWNERS MANUAL FOR DETAILS.



34-766
JET LOCK FENCE w/GUIDE RAILS & EXTENSION WING
(OPTIONAL)

REPLACEMENT PARTS

<u>REF. NO.</u>	<u>PART NUMBER</u>	<u>DESCRIPTION</u>
*	34-766	JET LOCK FENCE w/GUIDE RAILS & EXT. WING (See Note D), CONST OF:
*	34-896	JET LOCK RIP FENCE, CONST OF:
250	422-19-043-0001	FENCE BODY
251	901-01-060-0605	5/16-18 X 1/2" HEX HD SCR
252	904-01-010-1620	FLAT WASHER
253	901-01-060-0677	3/8-24 X 1/2" HEX HD SCR (CMO)
253A	901-01-060-0653	3/8-24 X 5/8" HEX HD SCR (EMO)
254	904-01-033-1451	FLAT WASHER
255	901-02-010-0551	#10-32 X 1/4" ROUND HD SCR
256	951-01-020-7849	POINTER
257	422-04-010-5002	REAR SLIDE BLOCK
258	905-04-071-4459	PIN
259	928-01-041-4118	COIL SPRING
260	422-04-027-0001	HOOK
261	422-04-067-5001	LEVER
262	422-04-108-5001	ROD
*	422-04-312-5008	FRONT CLAMP, CONST OF:
263	422-04-012-5005	FRONT CLAMP BODY
264	422-04-042-5005	ECCENTRIC
265	422-04-071-5005	PIN
266	422-04-071-5004	PIN
267	931-01-011-4091	BALL HANDLE
268	422-04-111-5002	LEVER
269	422-04-351-5002	KNOB & PINION
270	928-01-201-5898	SPRING
271	901-04-160-6218	1/4-20 X 1/4" HEX SOC SET SCR
272	422-04-327-5002	FRONT CLAMP ASSY, INCL:
273	904-08-021-4550	RUBBER BUSHING
274	928-01-041-4123	SPRING
275	928-01-021-5301	SPRING
276	422-04-105-5001	SLEEVE
*	34-812	RAILS w/HARDWARE, CONST OF:
280	422-04-055-0001	FRONT GUIDE RAIL
281	422-04-112-5007	SPECIAL SCR
282	422-04-104-0001	SPACER
283	902-01-010-1207	3/8-24 HEX NUT
284	422-04-055-0002	REAR GUIDE RAIL
285	961-01-010-7462	END PLUG
290	43-349	EXTENSION WING, INCL:
291	904-01-010-1638	FLAT WASHER
292	901-01-060-9964	7/16-20 X 1 1/4" HEX HD SCR

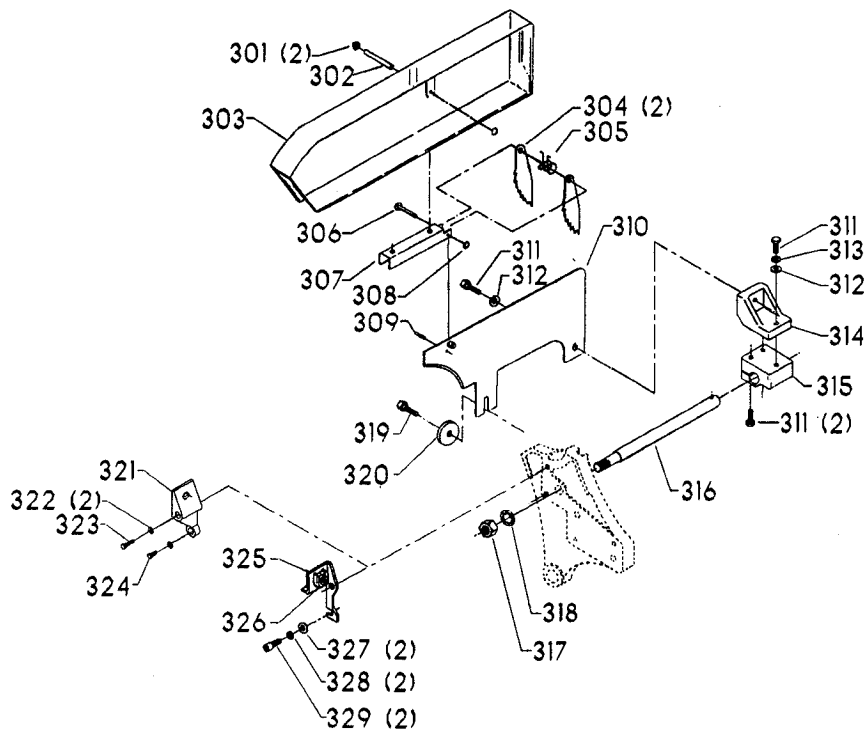
* NOT SHOWN ASSEMBLED
 (EMO) = EARLY MODELS ONLY
 (CMO) = CURRENT MODELS ONLY

NOTES:

D) THE 10" TILTING ARBOR UNISAW IS AVAILABLE WITH EITHER THE JET LOCK FENCE OR UNIFENCE (PARTS LIST CS-4K-9A) OR BIESEMEYER FENCE SYSTEM (PARTS LIST CS-15).

REF. NO.	PART NUMBER	DESCRIPTION	REF. NO.	PART NUMBER	DESCRIPTION
*	34-639	BLADE GUARD COMPLETE, CONST OF:	316	422-04-089-0003	SUPPORT ROD
*	1086935	BLADE GUARD, CONST OF:	317	902-01-020-1226	5/8-18 JAM NUT
301	1086388	PUSH NUT CAP	318	904-03-020-1751	5/8" INT TOOTH WASHER
302	1087811	PIN	319	901-01-060-0649	5/16-18 X 1" HEX HD SCR
303	1086334	SEE THRU GUARD	320	422-03-072-0001	PLATE
304	422-16-047-0001	KICK BACK FINGER	321	422-04-014-0037	SPLITTER BRACKET (CMO)
305	1086353	SPRING	322	904-01-031-2934	1/4" FLAT WASHER (CMO)
306	422-16-071-0002	PIN	323	901-03-010-0230	1/4-20 X 2" HEX SOC HD SCR (CMO)
307	1086337	PIVOT BRACKET	324	901-03-010-0755	1/4-20 X 3/4" HEX SOC HD SCR (CMO)
308	1086387	PUSH NUT	325	422-04-314-0017	BRACKET ASSY (EMO), INCL:
309	905-01-010-6729	SPRING PIN	326	902-03-013-1063	5/16-18 TINNEMAN NUT (EMO)
310	1086911	SPLITTER w/BUSHING	327	904-01-010-1620	FLAT WASHER (EMO)
311	901-01-060-0649	5/16-18 X 1" HEX HD SCR	328	904-02-010-1703	5/16" LOCK WASHER (EMO)
312	904-01-010-1620	FLAT WASHER	329	901-03-010-0762	5/16-18 X 5/8" HEX SOC HD SCR (EMO)
313	904-02-010-1703	5/16" LOCK WASHER			
314	422-04-014-0018	BRACKET			
315	422-04-014-0019	BRACKET			

* NOT SHOWN ASSEMBLED
(EMO) = EARLY MODELS ONLY
(CMO) = CURRENT MODELS ONLY



STANDARD SAFETY EQUIPMENT

In order to promote tool safety, Delta International Machinery Corp. strictly enforces the policy of repairing or replacing any damaged or missing standard safety equipment on machines presented to Delta Authorized Service Centers for service/repair. Any product which is presented to a Delta Authorized Service Center for repairs which contains missing or damaged standard safety equipment will have that equipment repaired or replaced and the customer will be charged for any such service/repairs. Customers can avoid such charges only if the missing safety component is supplied to the service center at the time of repair.

This parts list is provided to aid in obtaining service parts. Copies of the instruction and maintenance literature can be obtained through the Delta Technical Publications Department or through your local service outlet.