

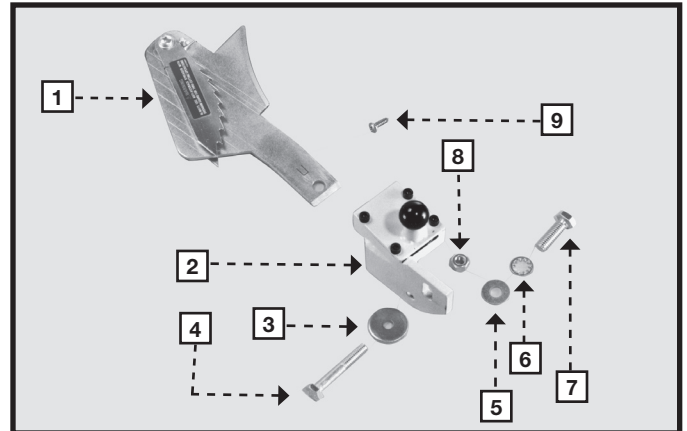
## BIESEMEYER<sup>®</sup> MODEL B78-451 ANTI-KICKBACK SNAP-IN SPREADER

For Jet Right-Tilting Arbor Saw

### COMPONENTS

1. Splitter
2. Splitter Mounting Bracket
3. Flat Washer
4. 1/4-20 x 1-3/4" Hex-head Screw
5. 5/16" Flat Washer
6. 5/16" Internal Tooth Washer
7. 5/16-18 x 1" Hex-Head Screw
8. 1/4-20 Locknut
9. 1/2" Self-tapping Mount Screw for Splitter Storage  
(on Biesemeyer T-Square Blade Guard Systems)

**IMPORTANT:** This splitter is intended for use with basket-style blade guards only.

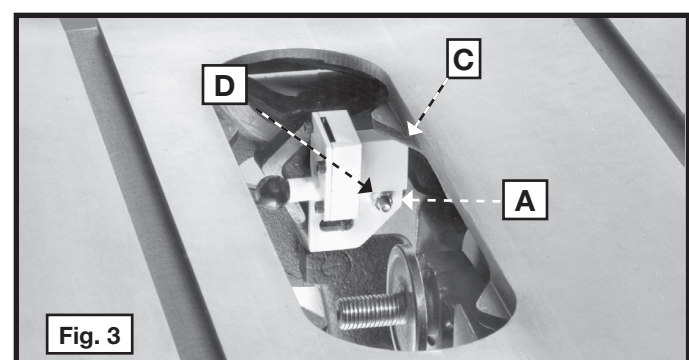
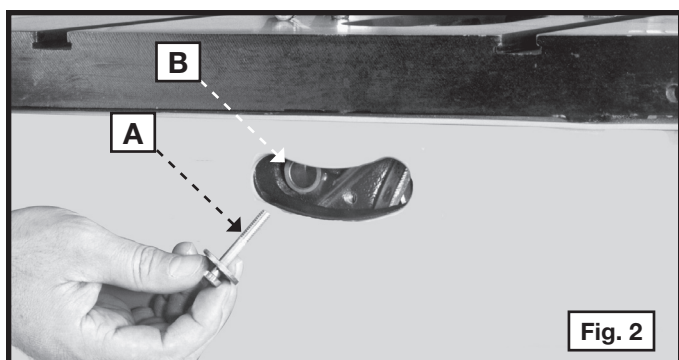
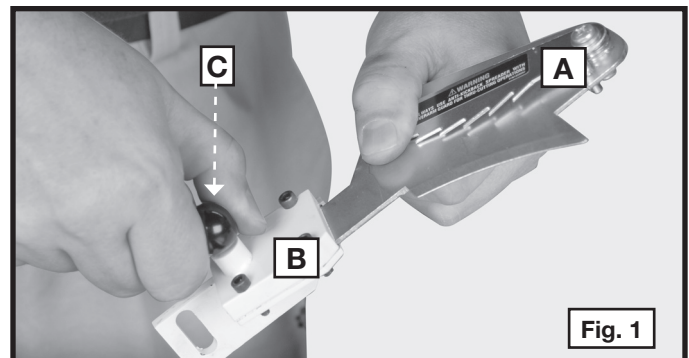


### ASSEMBLY

**⚠ WARNING** Disconnect machine from power source!

1. Remove the saw blade, the existing blade guard, and the splitter-mounting assemblies.
2. The splitter (A) Fig. 1 comes attached to the splitter-mounting bracket (B). Pull out on the black knob on the side of the bracket and remove the splitter.
3. Place the flat washer on the 1-3/4" screw (A) Fig. 2. Insert the screw through the hole (B) in the trunnion.

**NOTE:** You might need to tilt the saw arbor slightly to gain access to the hole (B) in the rear of the saw cabinet.

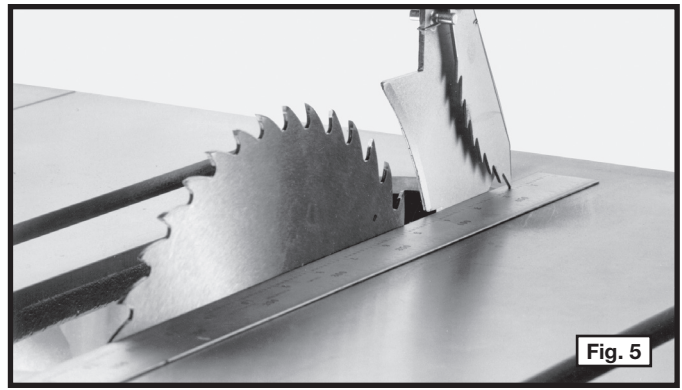
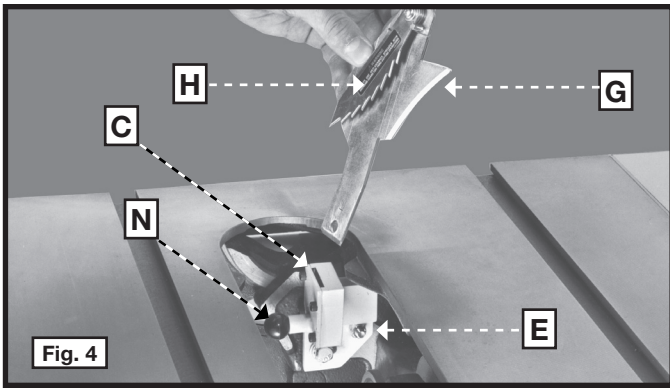


4. Position the splitter-mounting bracket (C) Fig. 3 on the screw (A). Fasten the splitter-mounting bracket (C) to the trunnion with the 1/4-20 locknut (D).

**NOTE:** Hand tighten the locknut for further adjustment.

5. Move the saw arbor back to its original position.
6. Place the internal tooth washer and flat washer (F) on the 1" Hex-Head Screw, and thread the screw through the slotted hole in the splitter-mounting bracket (C) and in the trunnion (Fig. 4).

**NOTE:** Hand tighten for further adjustment.



6. Insert the splitter blade (G) Fig. 4 into the slot of the mounting bracket (C) until it snaps in place.

**IMPORTANT:** Face the anti-kickback fingers (H) Fig. 5 toward the front of the saw.

7. Attach the saw blade to the arbor. Raise the saw blade to its maximum height.

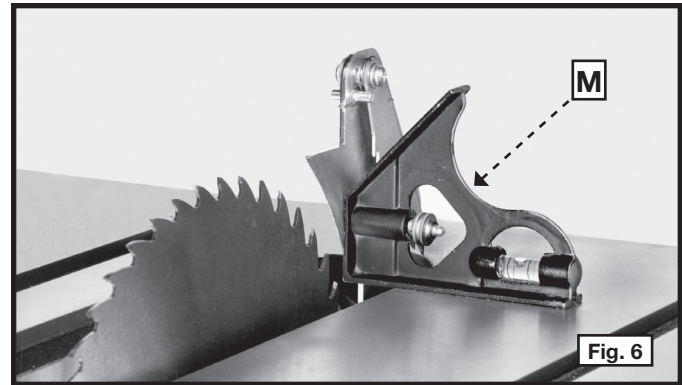
8. Use a straight-edge (K) Fig. 5 against the saw blade (L) and the splitter blade (G) to align the splitter with the blade. Adjust the bracket as necessary.

9. Use a square (M) Fig. 6 to see if the splitter is 90 degrees to the table. Adjust the splitter mounting bracket as necessary. Tighten the screw (E) when the splitter is aligned.

**NOTE:** Always use the splitter when performing through-cutting operations.

**IMPORTANT:** Remove the splitter (G) Fig. 6 when performing non-through-cutting operations. Pull outward on the knob (N) Fig. 6 and lift the splitter from the bracket.

**IMPORTANT:** Replace the splitter blade and the blade guard after you complete non-through-cutting operations.



## SERVICE

### REPLACEMENT PARTS

Use only identical replacement parts. For a parts list or to order parts, visit our website at [biesemeyer.com](http://biesemeyer.com). You can also order parts from our Customer Care Center at 1-800-782-1831.